

GREEN ROOF
-Green roof which helps to reducing surrounding temperature.
-Nature will help people to reduce anger, fear, and stress while increase pleasant feelings.

FLOWING WATER
-Stress Relief
-Natural Humidifier
-Noise Reduction



COURTYARD
-Contributes to physical wellbeing, reducing blood pressure, heart rate, muscle tension, and the production of stress hormones.

READING AREA
-Helps to increase knowledge and skills by reading

ART & CRAFT
-Hand craft as an income
-Increase skills
-Can skyrocket self-esteem
-Provide a space for people to release express themselves

MEDITATION
-Reduces Stress
-Generate Kindness
-Controls Anxiety

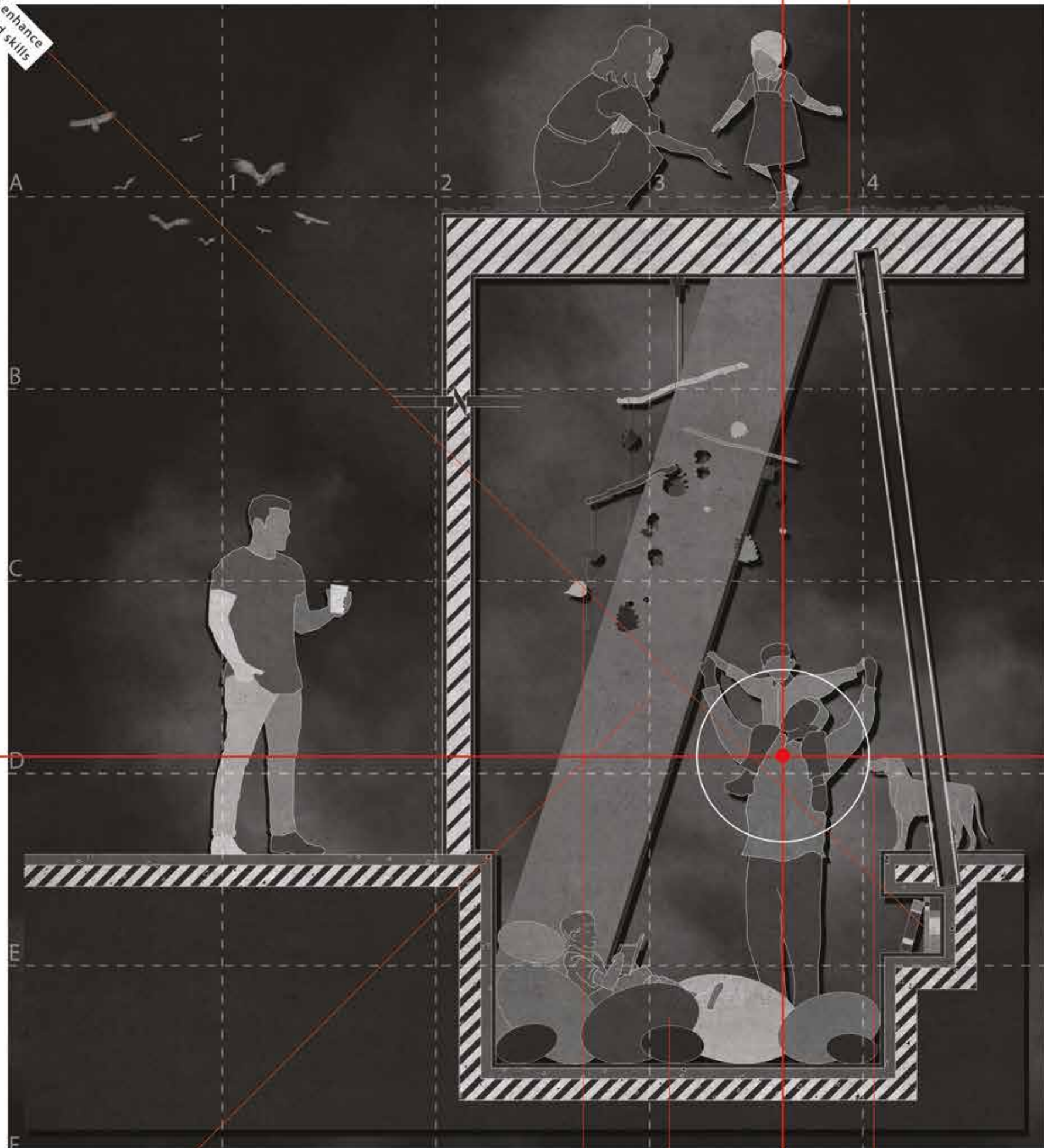
SPATIAL NOTATIONS
SCALE 1:10

SPATIAL NOTATIONS



GREEN ROOF
-A green area for people to enjoy themselves under the sun
-Nature helps people to release stress and feel peaceful

Books to enhance knowledge and skills



SPATIAL NOTATIONS
SCALE 1:10

SPATIAL NOTATIONS

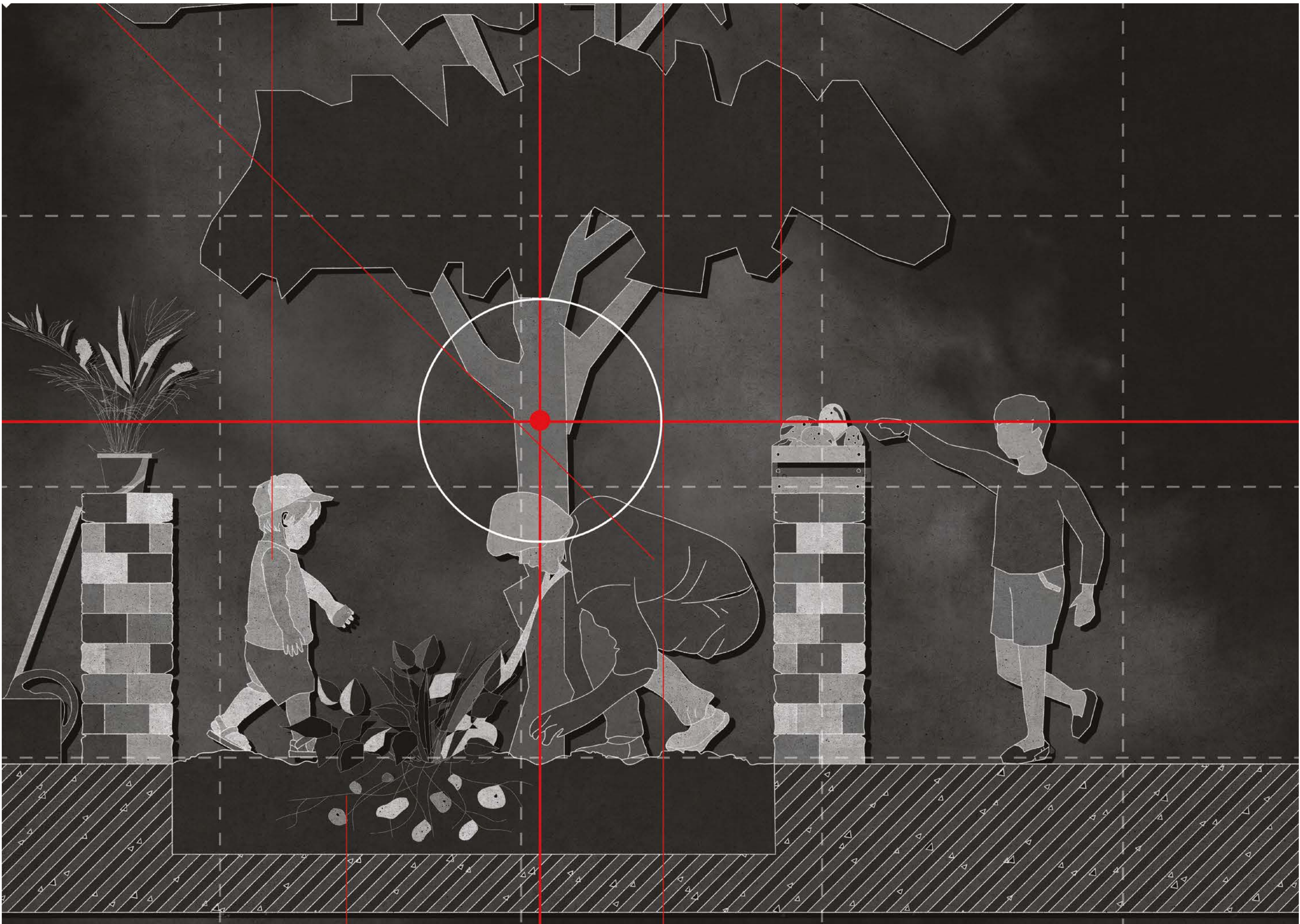


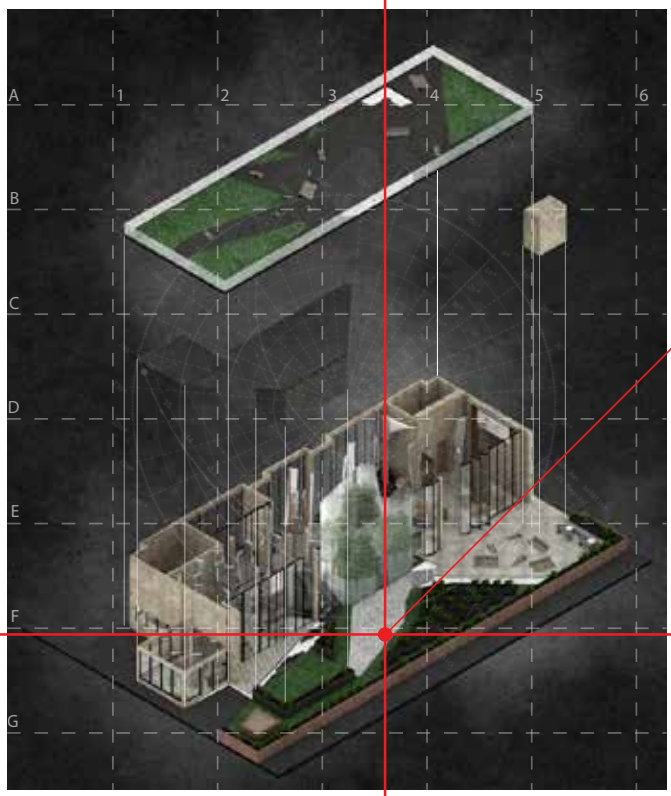
UNITED KNOWLEDGE
-To respect the process of learning by reflecting and the courage of merging

ART & CRAFT
-Hand craft as an income
-Can skyrocket self-esteem
-Provide a space for people to release express themselves

READING SPACE
-A space to rest, read and have fun

ANIMAL FRIENDLY
-Get hard to adopt dogs from animal shelters and use love to trained them into well-trained and socialised dog
-Teach people to be responsible

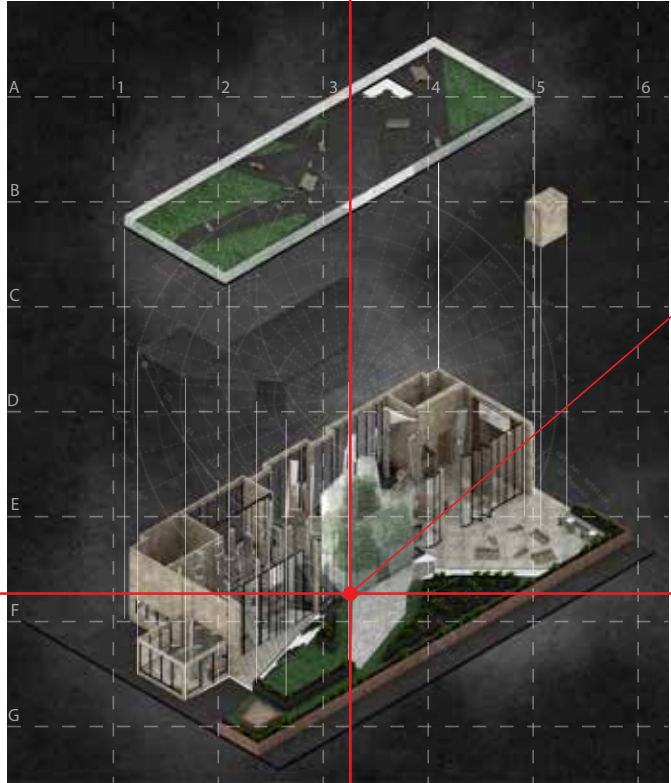




0830
PUBLIC GARDEN
- Briefing of job on the day
- Understand the task of the day
- Get to know each other more well by having small briefing
- Some morning exercise to boots up the energy

FIRST YEAR REHABILITATOR

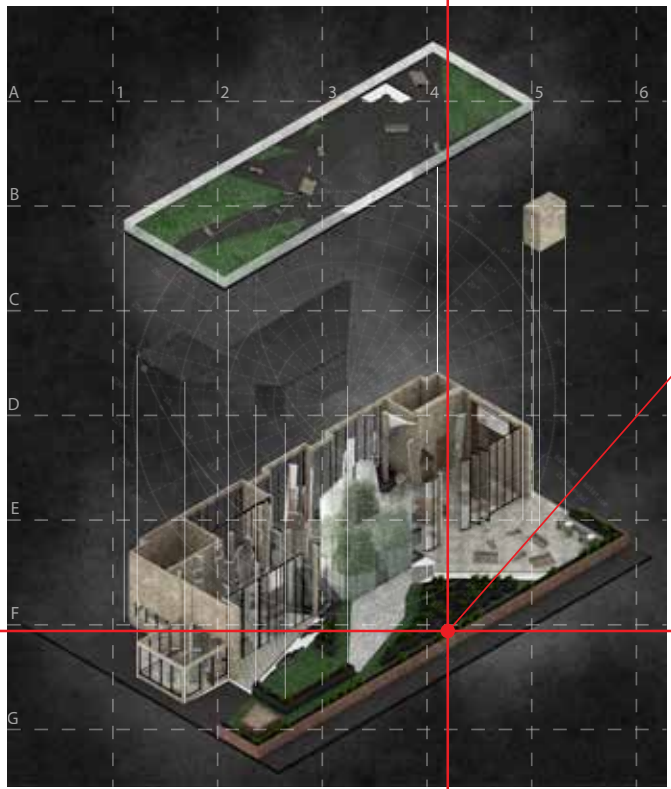
A DAY IN THE LIFE



0845
FISH THERAPY
- Change water in fish tank
- Feed fishes
- Keep the fish tank clean and tidy
- Keep the courtyard glass clean

FIRST YEAR REHABILITATOR

A DAY IN THE LIFE



0930
PUBLIC GARDEN
- Public garden, farming
- Teach the public to farm
- Fertilise plants
- Harvest plants according to seasons

FIRST YEAR REHABILITATOR

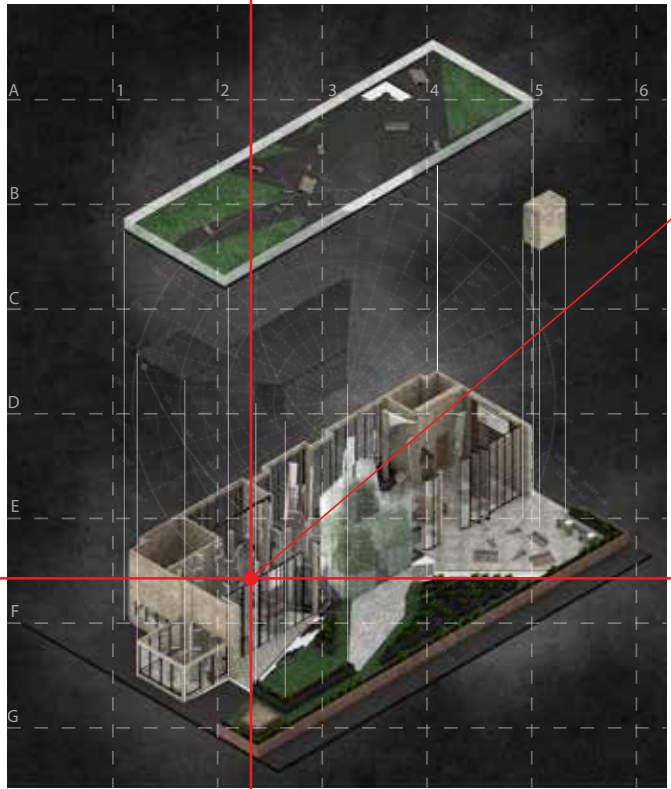
A DAY IN THE LIFE



1300
DINING AREA
- Lunch time together in the dining area
- Widen up social connection
- Increase employment chance when get to know other visitor/ customers

FIRST YEAR REHABILITATOR

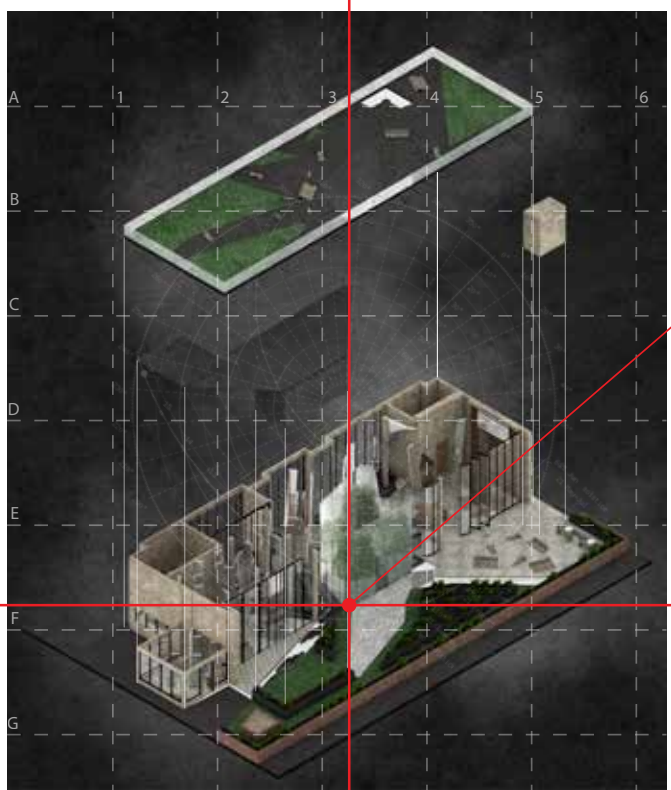
A DAY IN THE LIFE



1400
WORKSHOP
- Art and craft classes and workshop
- Produce art work and sell it as an income
- Provide a space for people to release and express themselves
- Gain self-confidence
- Increase Skills & knowledge

FIRST YEAR REHABILITATOR

A DAY IN THE LIFE



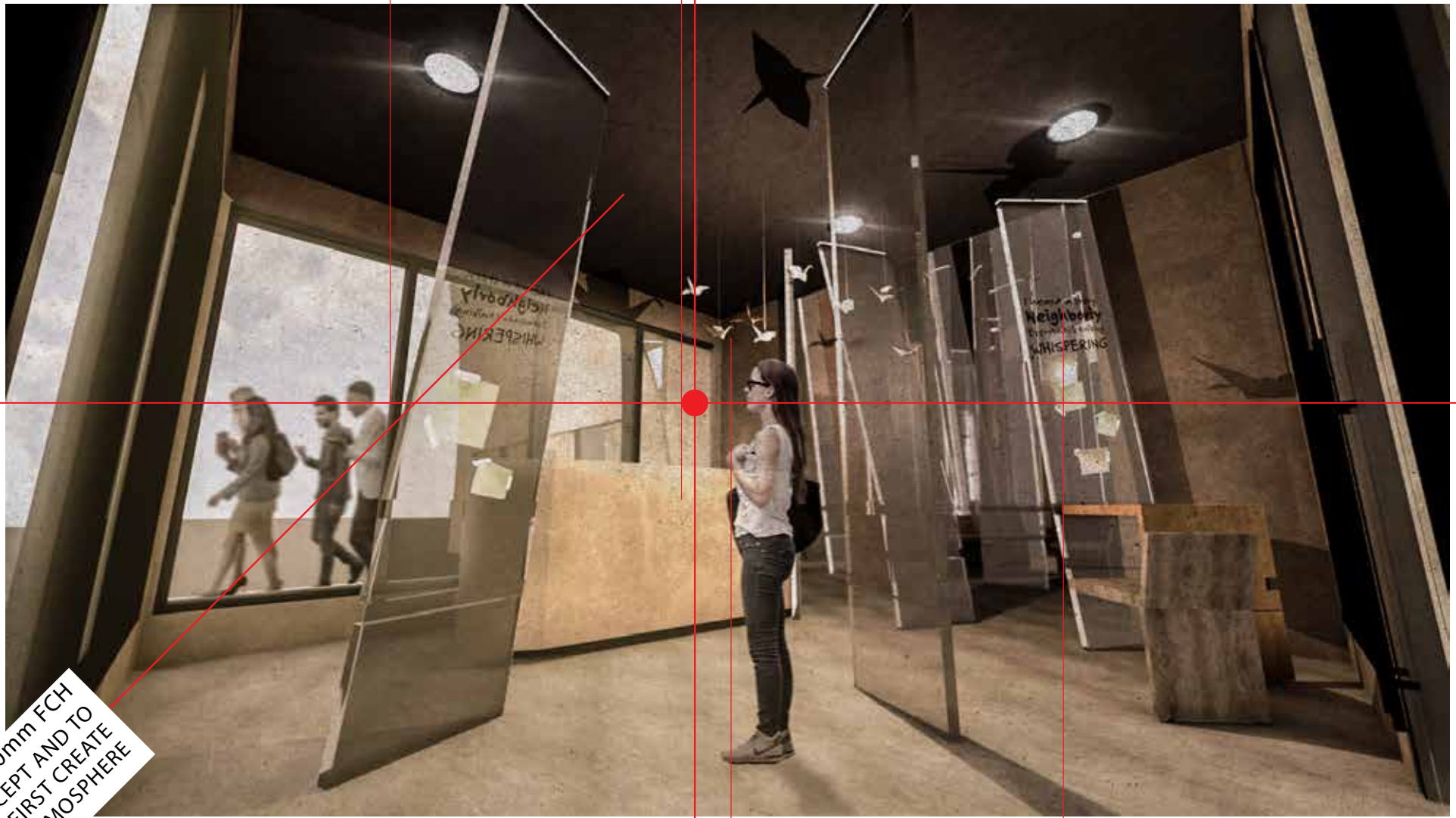
1700
READING CORNER
- Increase knowledge
- To get a better employment with rich knowledge
- Get inspiration and get impress

FIRST YEAR REHABILITATOR

A DAY IN THE LIFE

50mm THK BLACK ALUMINIUM STEEL

RECEPTION COUNTER 1100 mm HEIGHT



WAITING LOUNGE
RECEPTION AREA

3000mm FCH
LOW CEILING HEIGHT TO REFLECT CONCEPT AND TO SHOW CONTRAST BY FIRST CREATE AN OPPRESSIVE ATMOSPHERE

HANGING ART WORK

- Produce by rehabilitators
- Sell it as an income
- Display, boost self confidence
- Increase skills & knowledges

EVENTS/ ACTIVITIES LISTED

- Open for public to participate
- Event / activities can be listed by sticky notes/ marker pen
- Panels display helps to divide spaces

RECEPTION
AREA

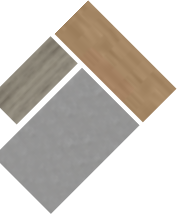
50mm THK BLACK ALUMINIUM STEEL
- Folding doors, make space wider
- Divide space according to activities

Light is weights for people to move it around easily

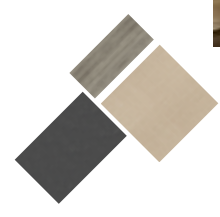
3000mm FCH
- Low ceiling height to reflect concept and to show contrast by first create an oppressive atmosphere



WORKSHOP

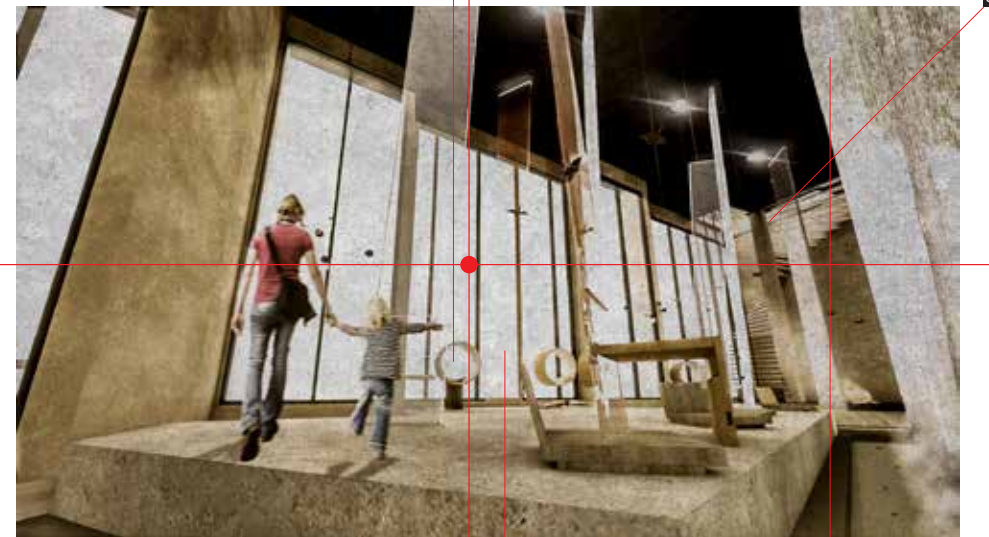


READING CORNER
COURTYARD



50mm THK BLACK ALUMINIUM STEEL
- Folding doors, make space wider
- Divide space according to activities

Chill and a quite private space for chatting and reading



50mm THK BLACK ALUMINIUM STEEL
- Folding doors, make space wider
- Divide space according to activities

GLASS WALL FOUNTAIN
- Glass wall fountain, even a relaxing atmosphere by visual and auditory

READING CORNER

