



Proposal North Facade



Albion House at Northampton  
Victoria Promenade, Northampton NN1 1HH

Student: Joana Talandziene  
Interior Architecture & Spatial Design  
University of Northampton

**Introduction:**

This report has been prepared in relation to Albion House, Victoria Promenade, Northampton NN1 1HH on behalf of creative agency CULT.

The purpose of this report is to establish the general building analysis and remodelling of the Albion House to design a creative workplace for a creative agency.



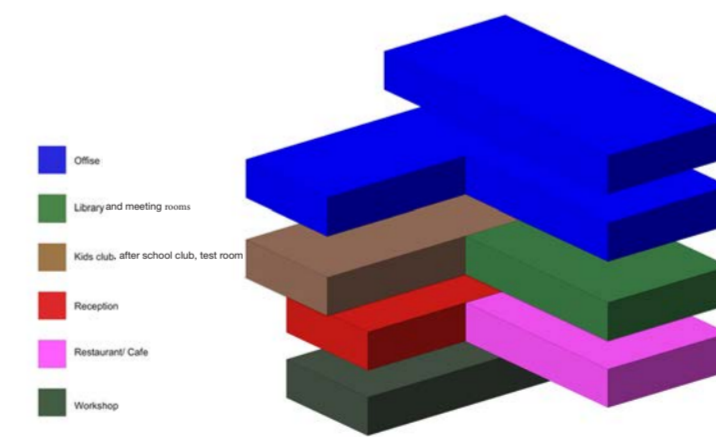
Site

**General Description:**  
The site is accessed from Victoria Promenade via foot path, and Albion Place to drive, which also provides access to a car park. In this area use to be Albion Vila. Albion house was built 1960-1970. On the east side of site is public multi storey car park. In front of Albion house is Becket park. Becket's Park is a traditional park along the banks of the River Nene, and forms a green gateway to the centre of Northampton. It's a great place for those based or working in the town centre to relax.



East Elevation

Albion house is reinforced concrete building, based on imperial build. It was built in 6 foot grid. Building is brutalist design influences, characterized by clean lines, simple geometric shapes and the use of material such as concrete, steel and glass. Tiles cladding was used for the Albion House.



Building diagram

The building is going to be trendy, stylish, fashionable. In the building will be created spaces for:

- office,
- library,
- meeting room,
- out of school homework/ gaming club,
- restaurant,
- workshop.

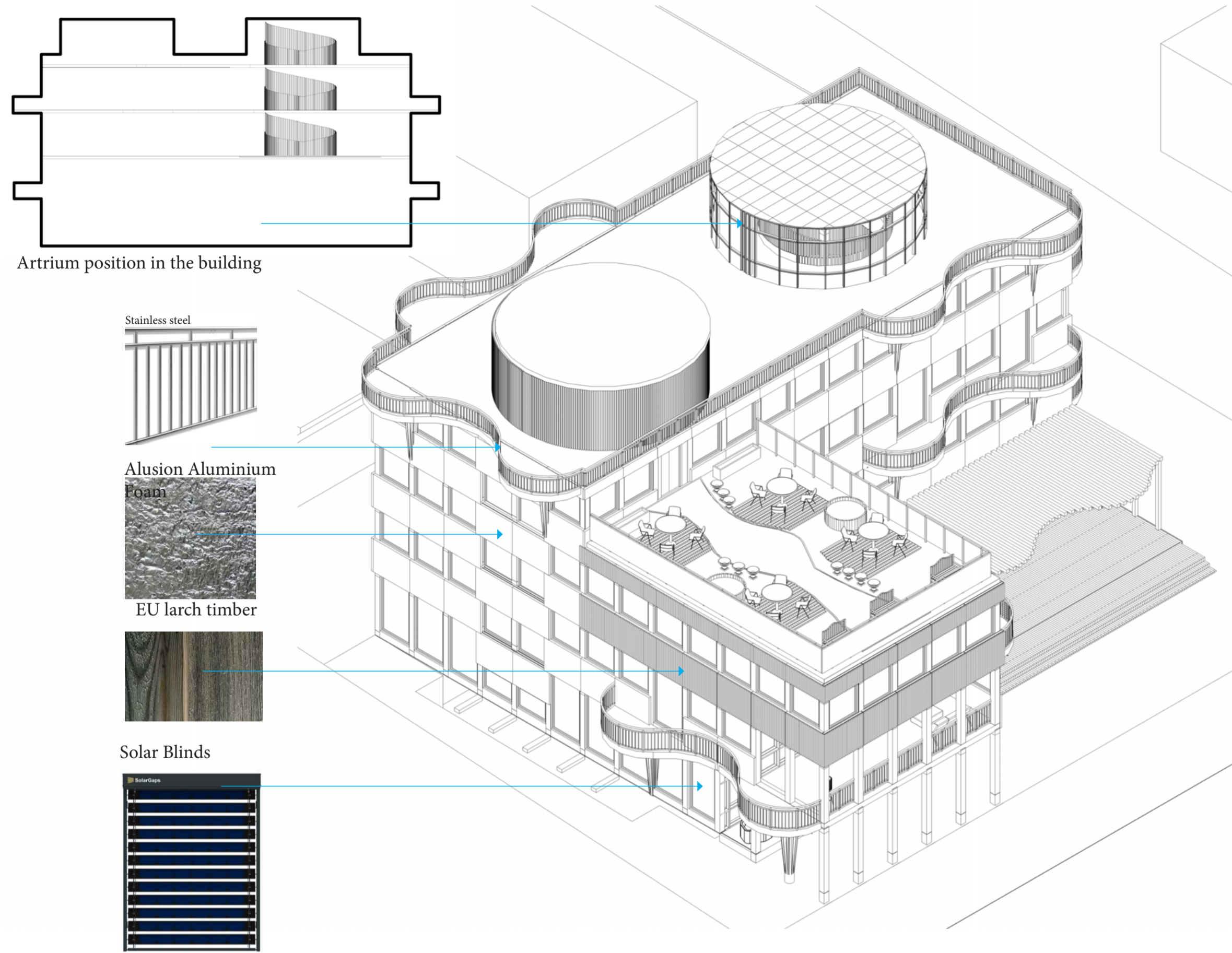


Creative agency

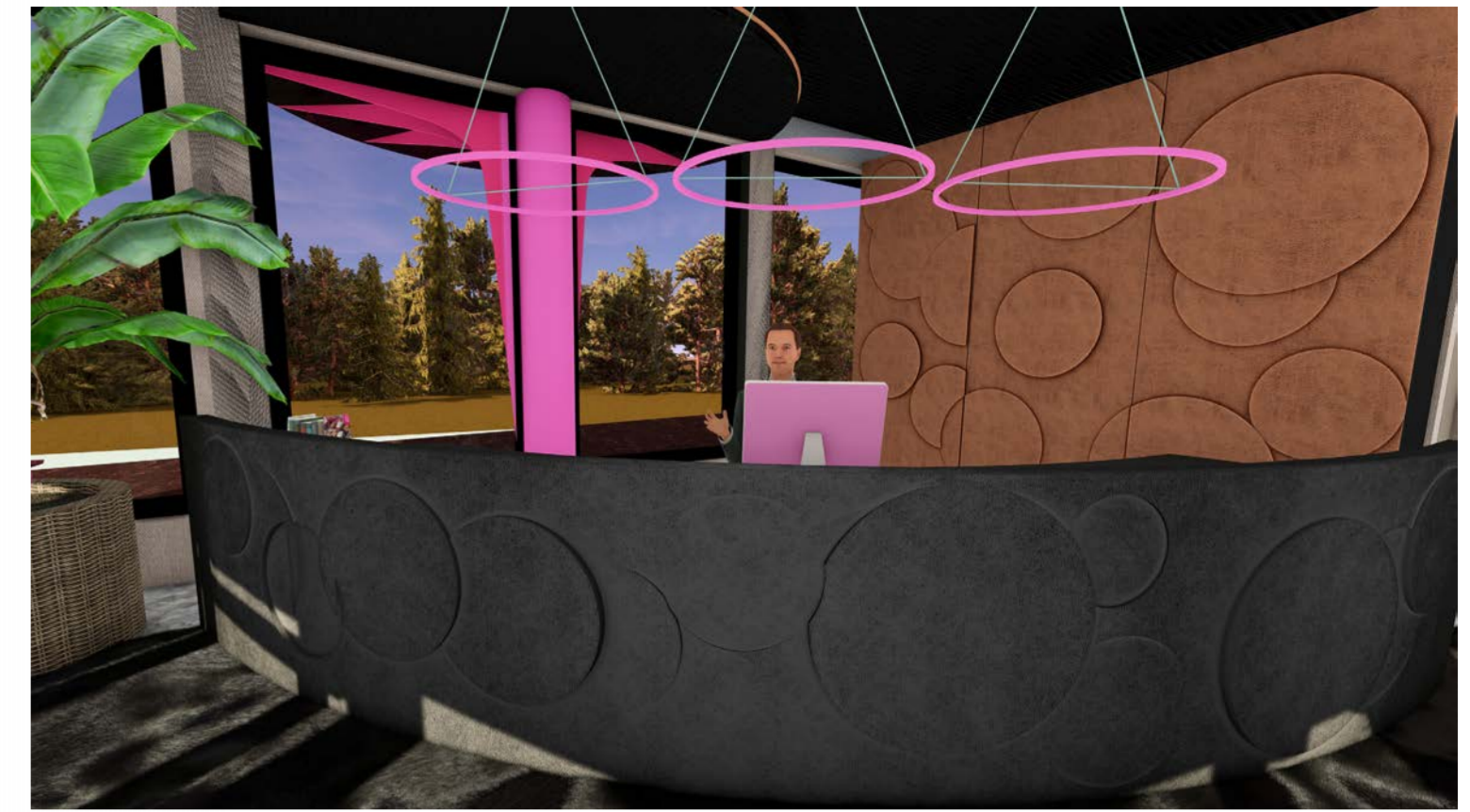
Office space for creative agency Cult. It will contain 54 seats to work, be based into 2 floors. Open plan office with 2 enclosed work spaces. Library will be books and samples of materials. It will be using Cult agency employees. Meeting rooms will be used for Cult employees and clients. Out of school club will be opened from 3pm till 7pm for Cult worker kids and extended hours on summer holidays and half terms.



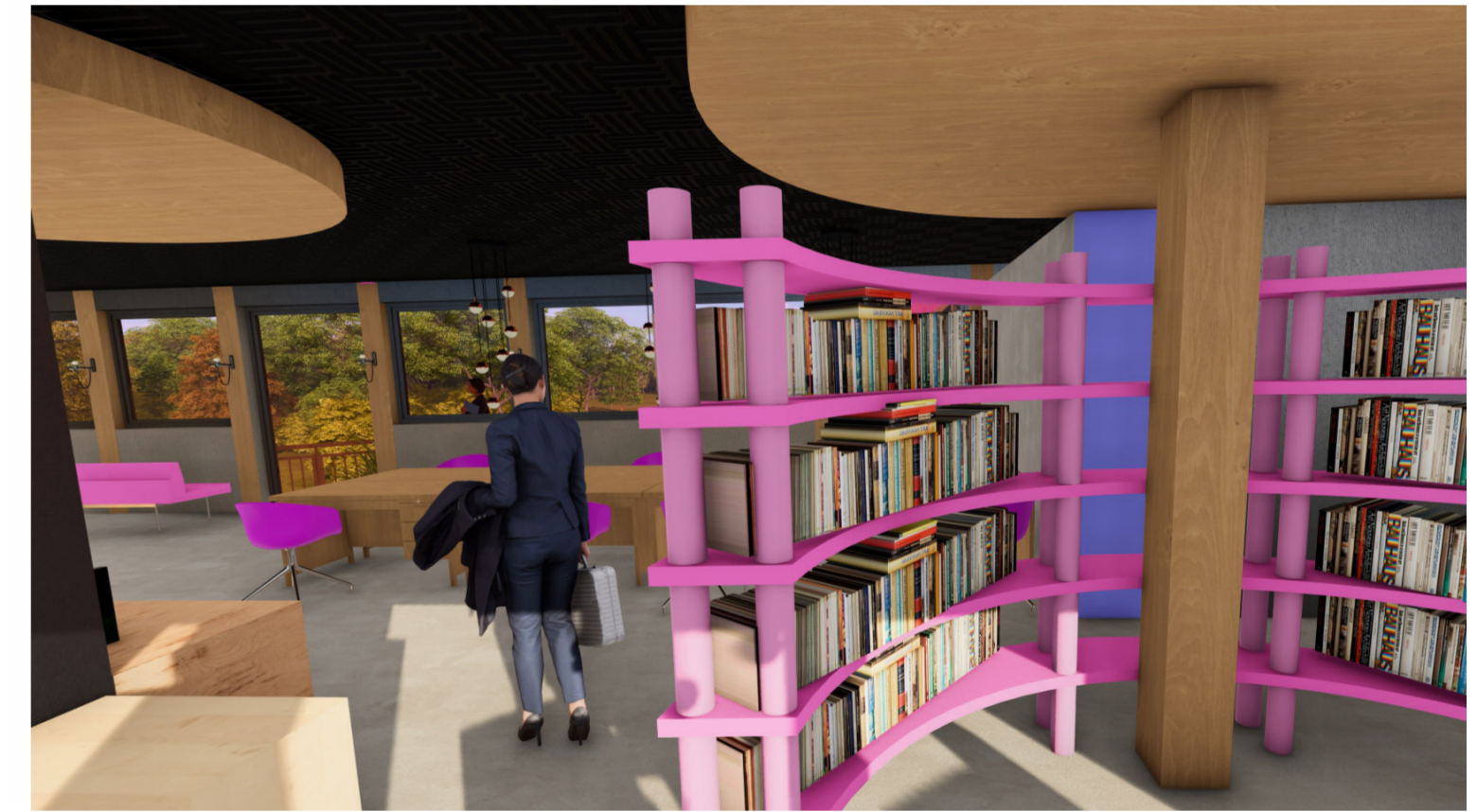
# Proposal Albion House materials and model



# Reception



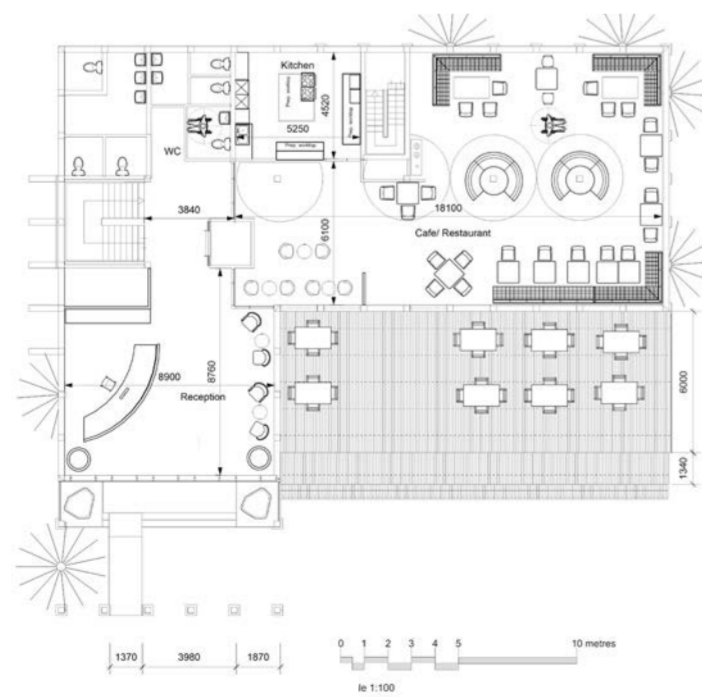
# Work space



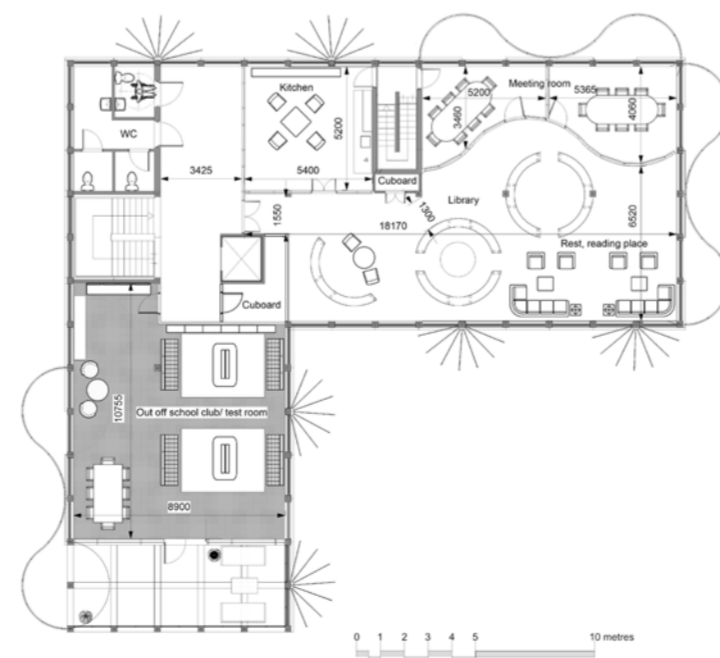
Proposal of bacement plan



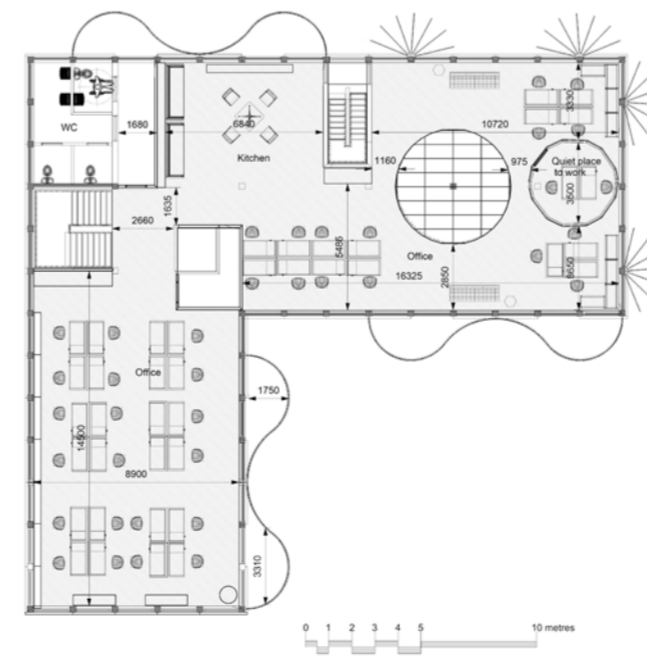
Proposal of ground floor plan



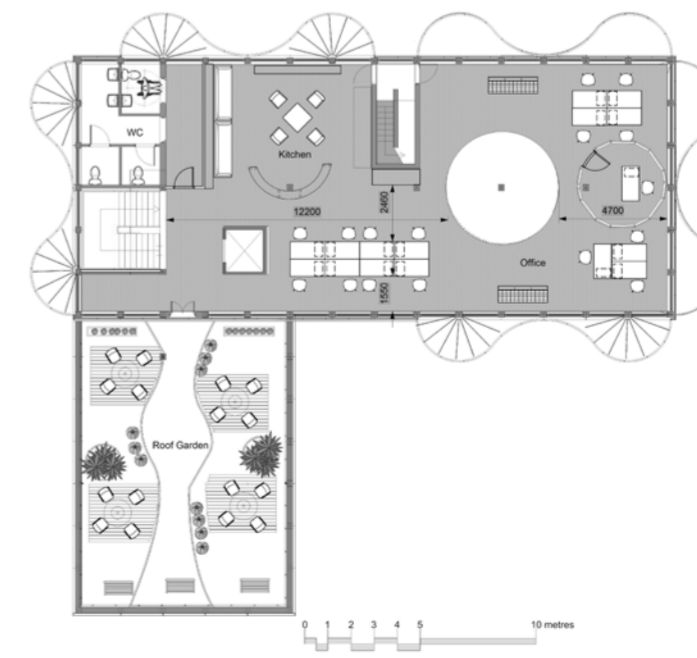
Proposal of 1st floor plan



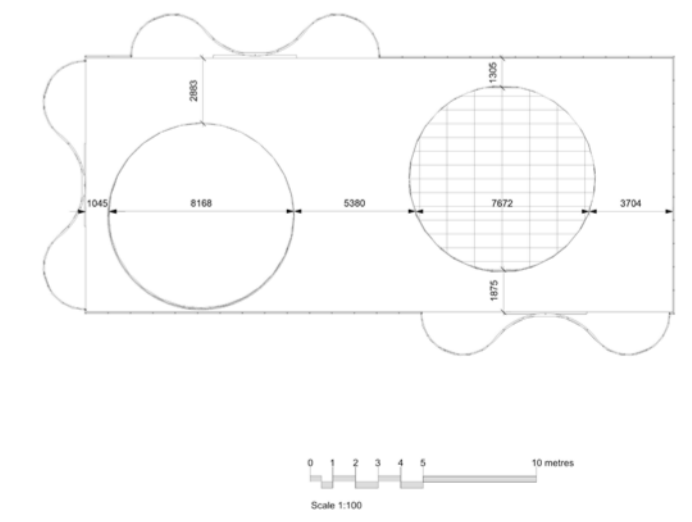
Proposal of 2nd floor plan



Proposal of 3rd floor plan

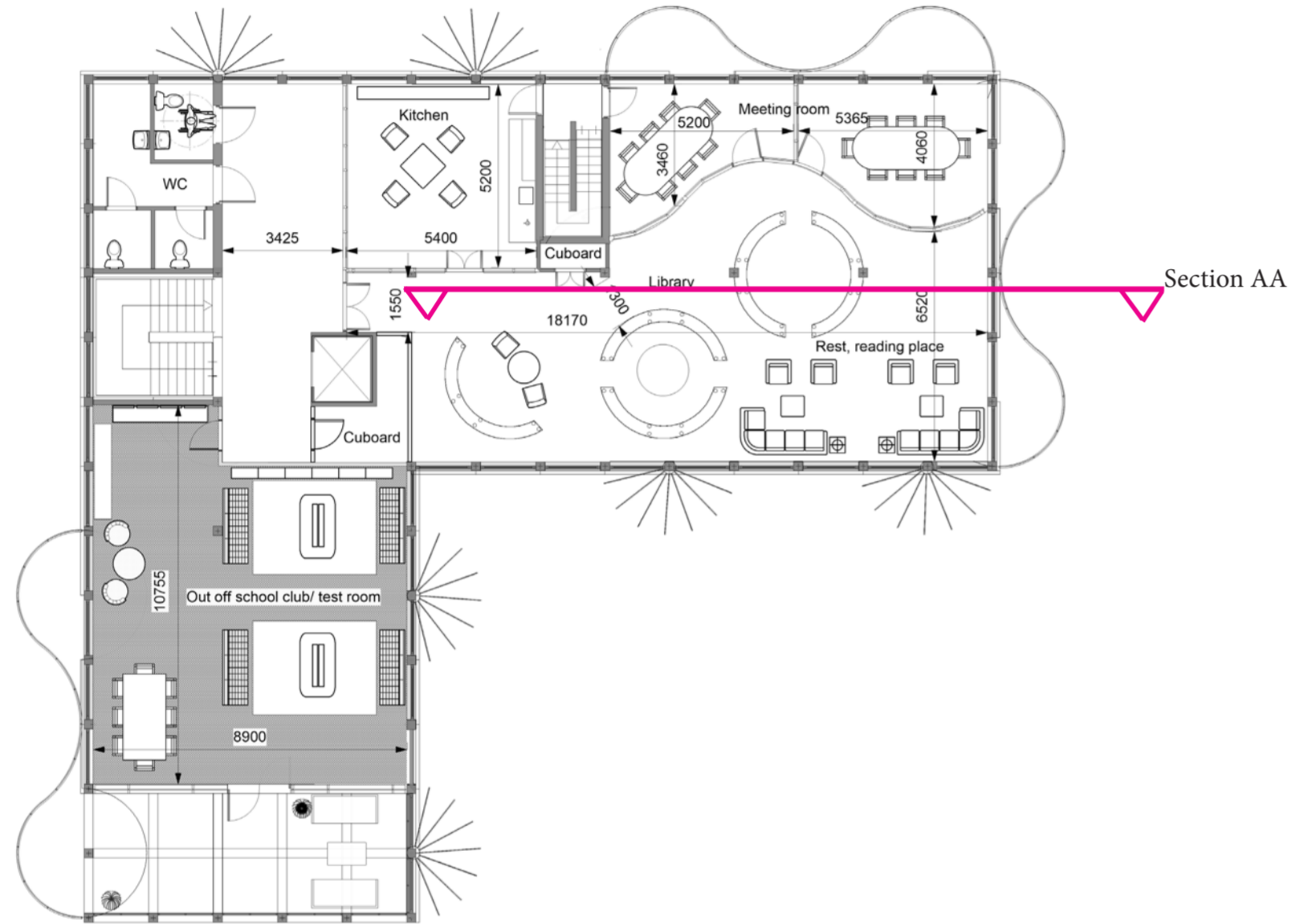
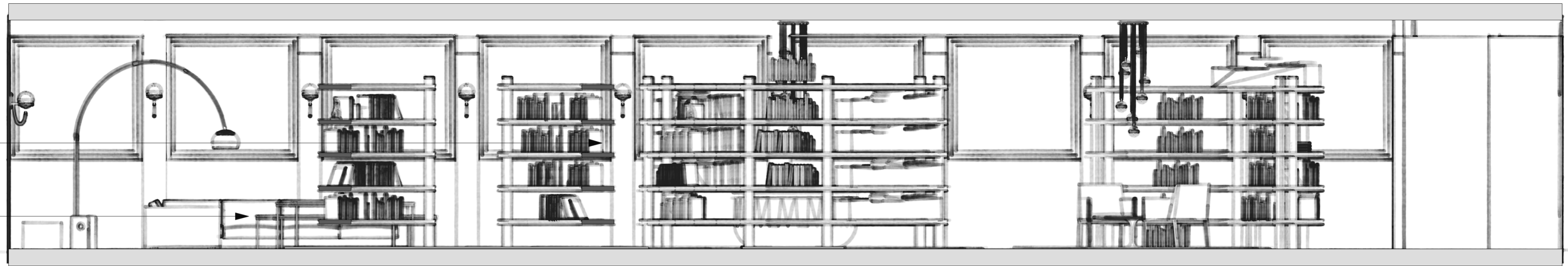


Proposal of roof plan





Library Section AA



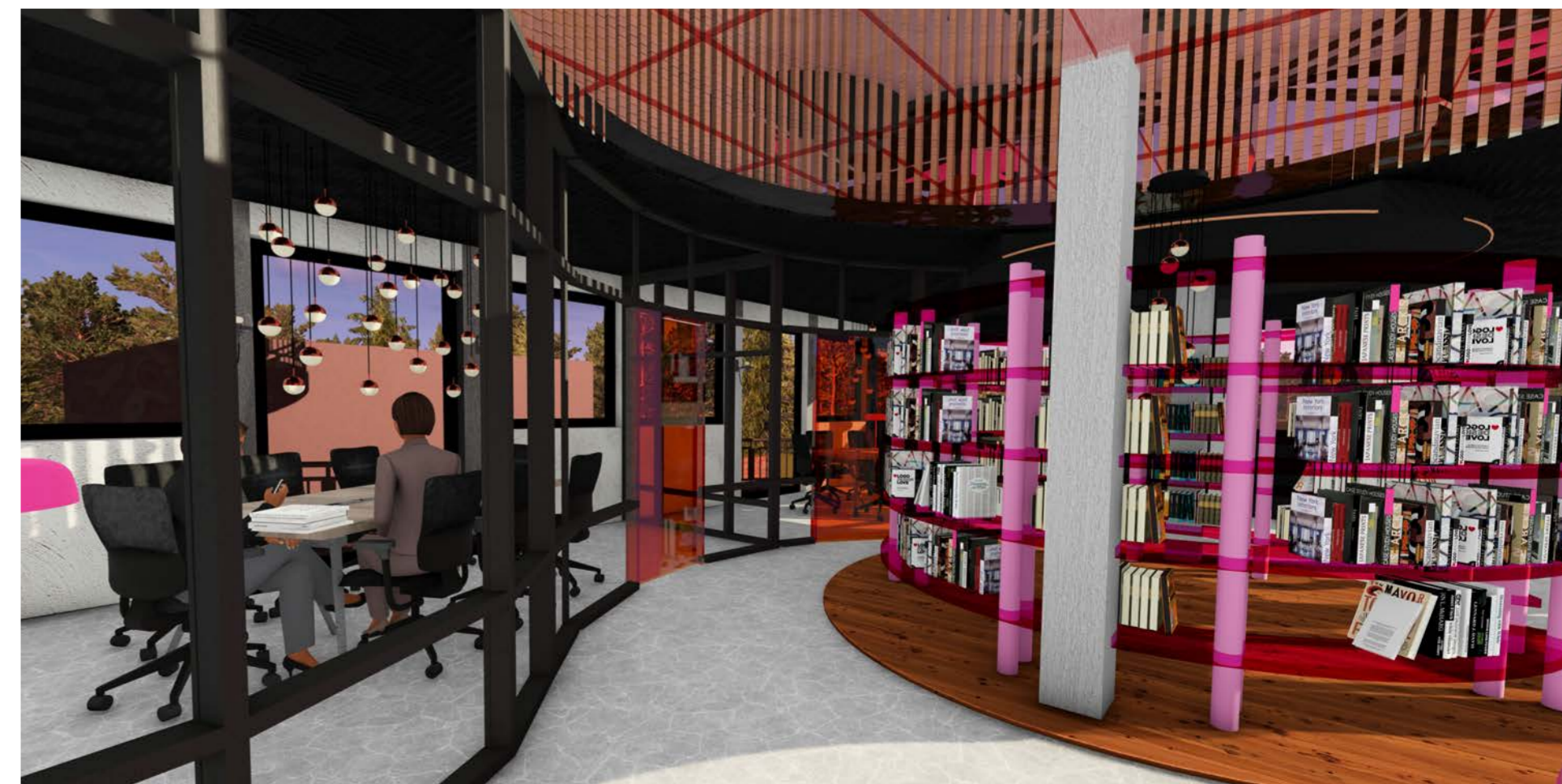
West view of the library in the 1st floor



South view of the library in the 1st floor

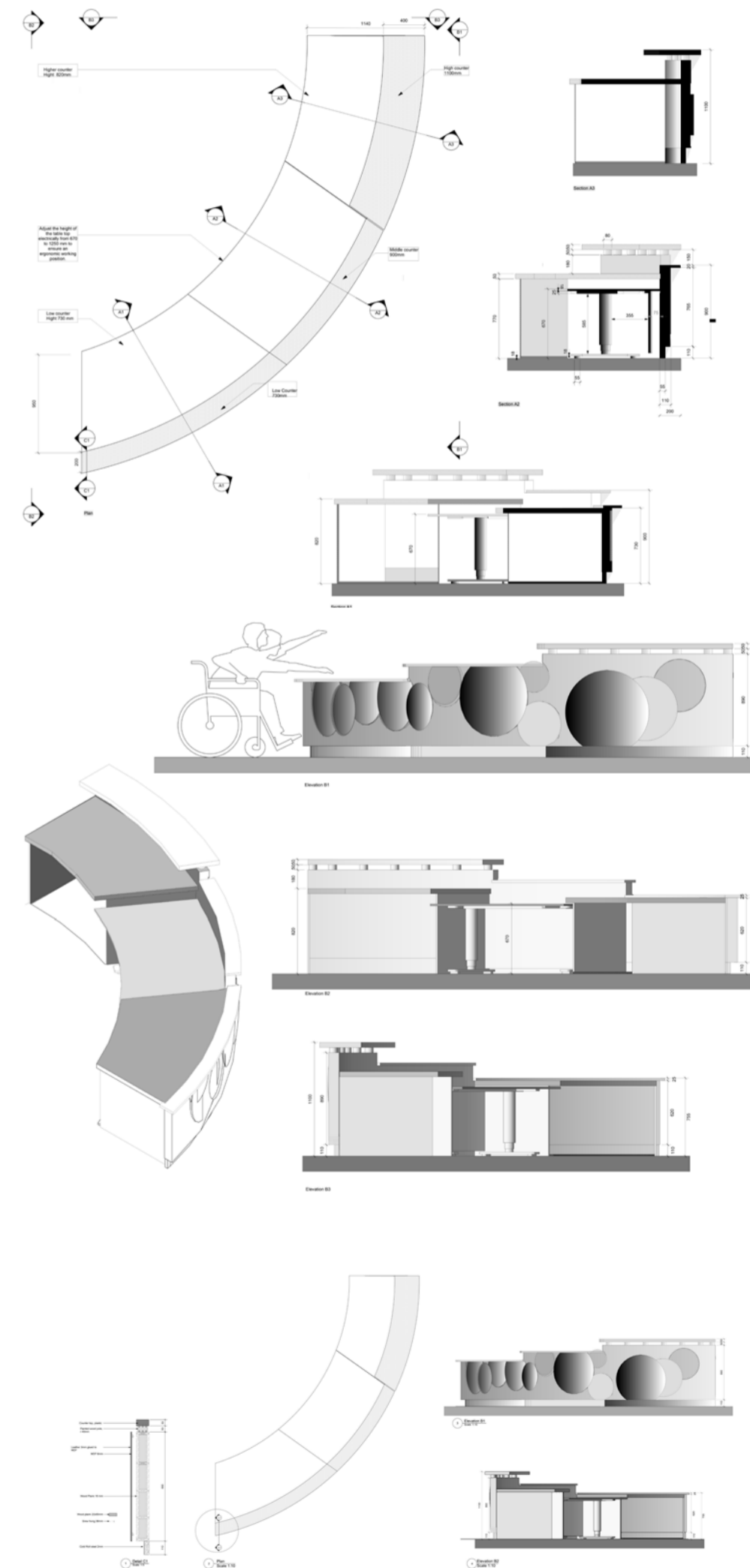


North view of the library in the 1st floor





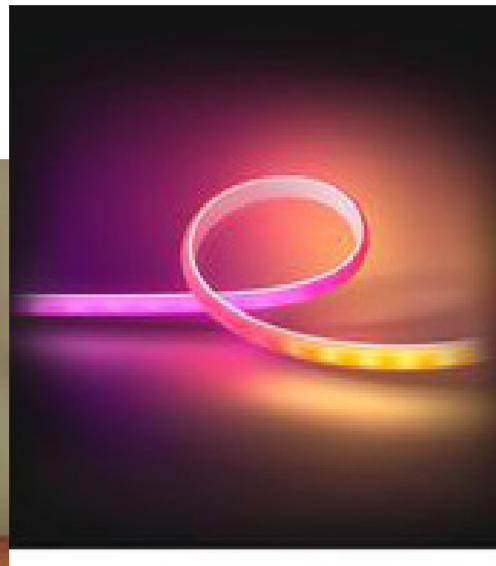
Reception desk



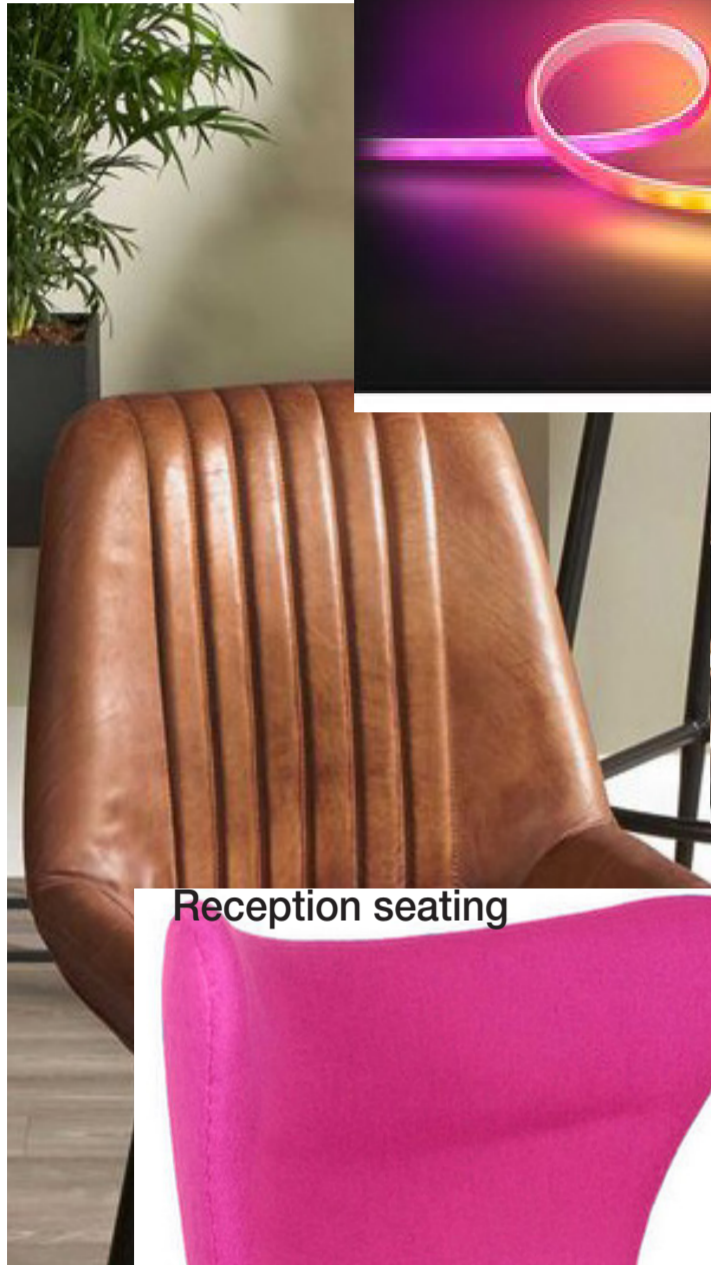
Greenery



Lighting



Reception seating



Material palette:



CULT