

Sweeping Signal /

'Sweeping Signal' - Detecting The Former Past of North East Riding.

Brief:

'Sweeping Signal' will be a space for Metal Detectorists and Archaeologists providing Restoration, Exhibition and Education to the local area. Operating with the BMDC, The Yorkshire Archaeological Society and The Yorkshire Archaeology Journal.

Spaces Within:

-Rally; Where members can gain motion of metal detector equipment.

-Document; A space for restoration, Documentation of artefacts newly discovered and previously found.

-Treasury;
-Temporary exhibition for members to display their significant finds.
-Permanent exhibition where important artefacts can be returned to their origins, including the Anglo-Saxon Sword and The Rudston Mosaic.

-Uncover; To accommodate educational and debate spaces to influence.

Sweeping Signal' project will ultimately infuse knowledge of the predecessors that once lived on Flamborough head, via the generation of spaces for local Metal Detectorists and Archaeologists.

Previous Use:

-Part of the Chain Home Low radar program during WWII.

-1949 Soviet tension RAF Bempton became The Air Ministry Experimental Station Type 31.

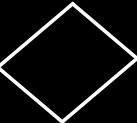
-1951 became part of the 146 Signals Unit, to detect potential soviet aircraft.

Key:

Bunker's Profile =



Approx. 8000m2 =



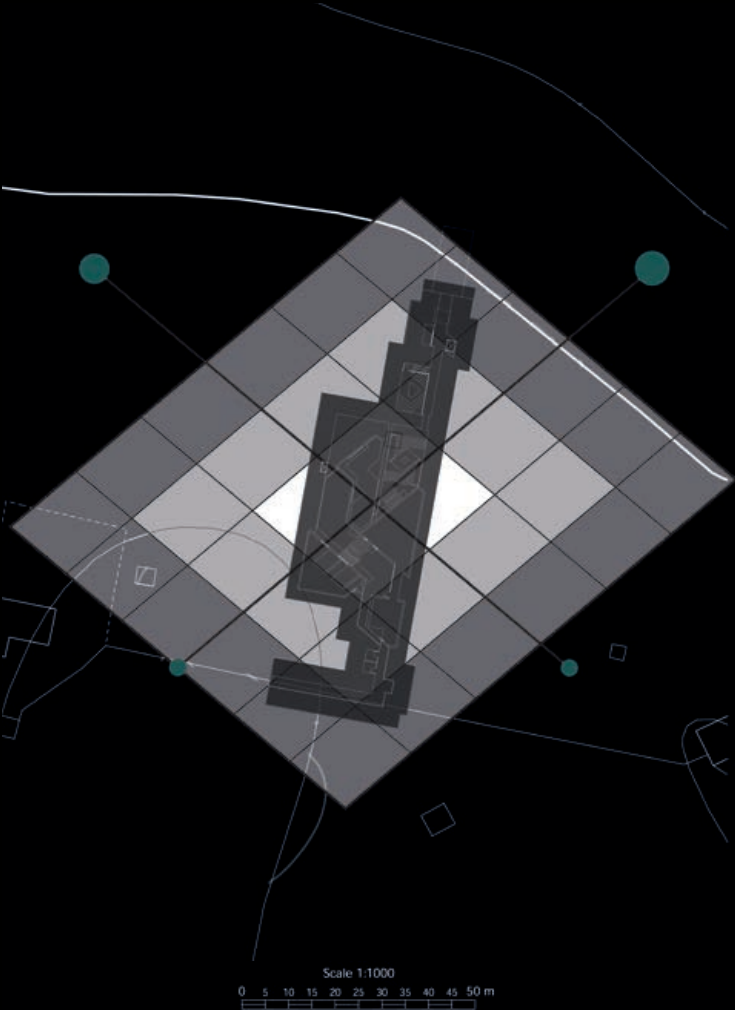
Route Taken =



Landscape
Decoy Pillars /



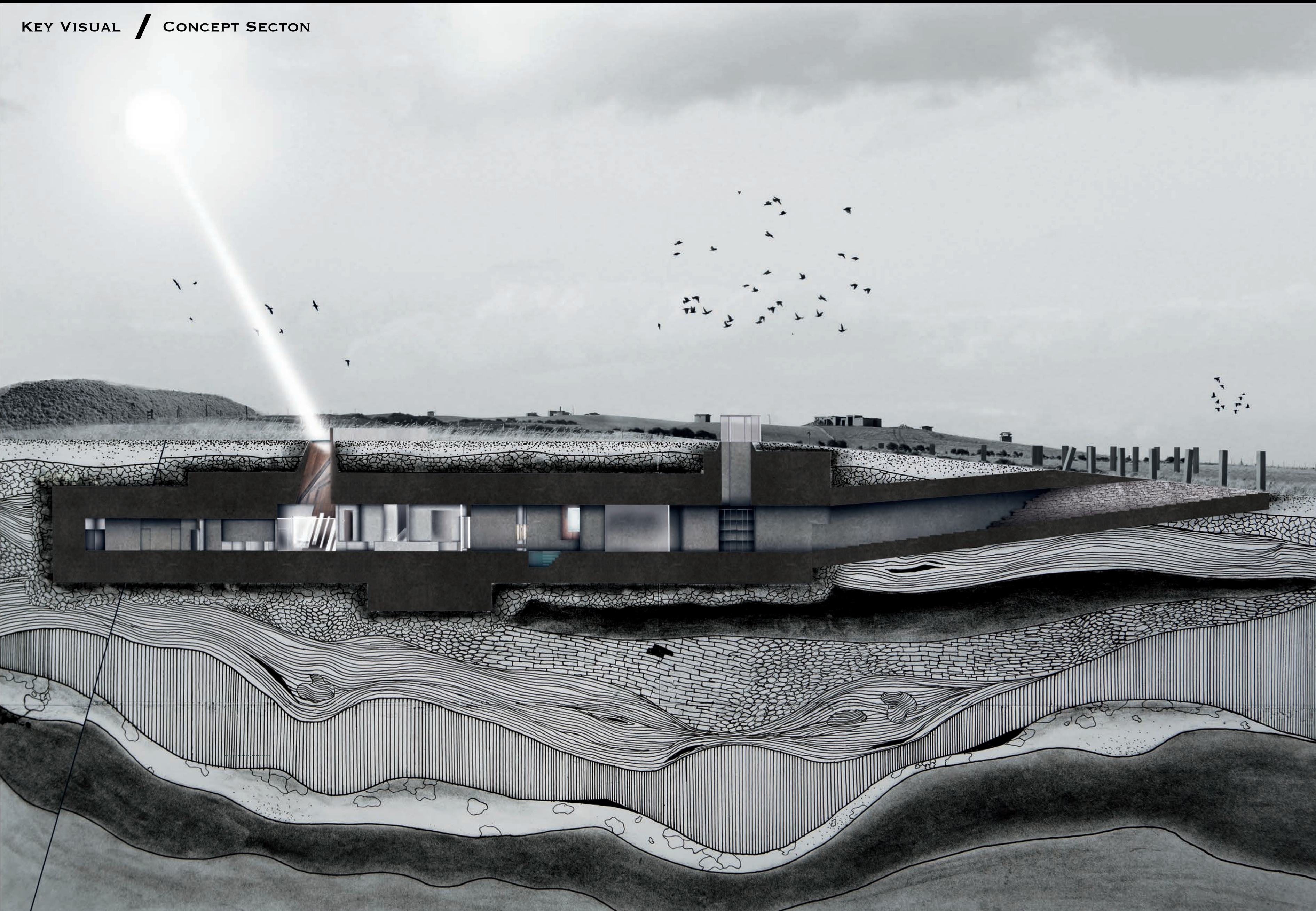
SOLSTICE
ALIGNMENT /



ILLUSTRATED
SITE JOURNEY /



KEY VISUAL / CONCEPT SECTION



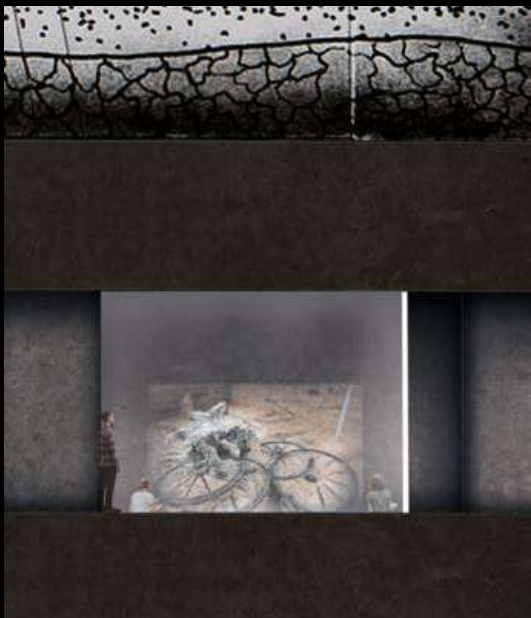
RALLY.



PRESERVE.



CRANNOG EXHIBIT.



CROSSTALK.

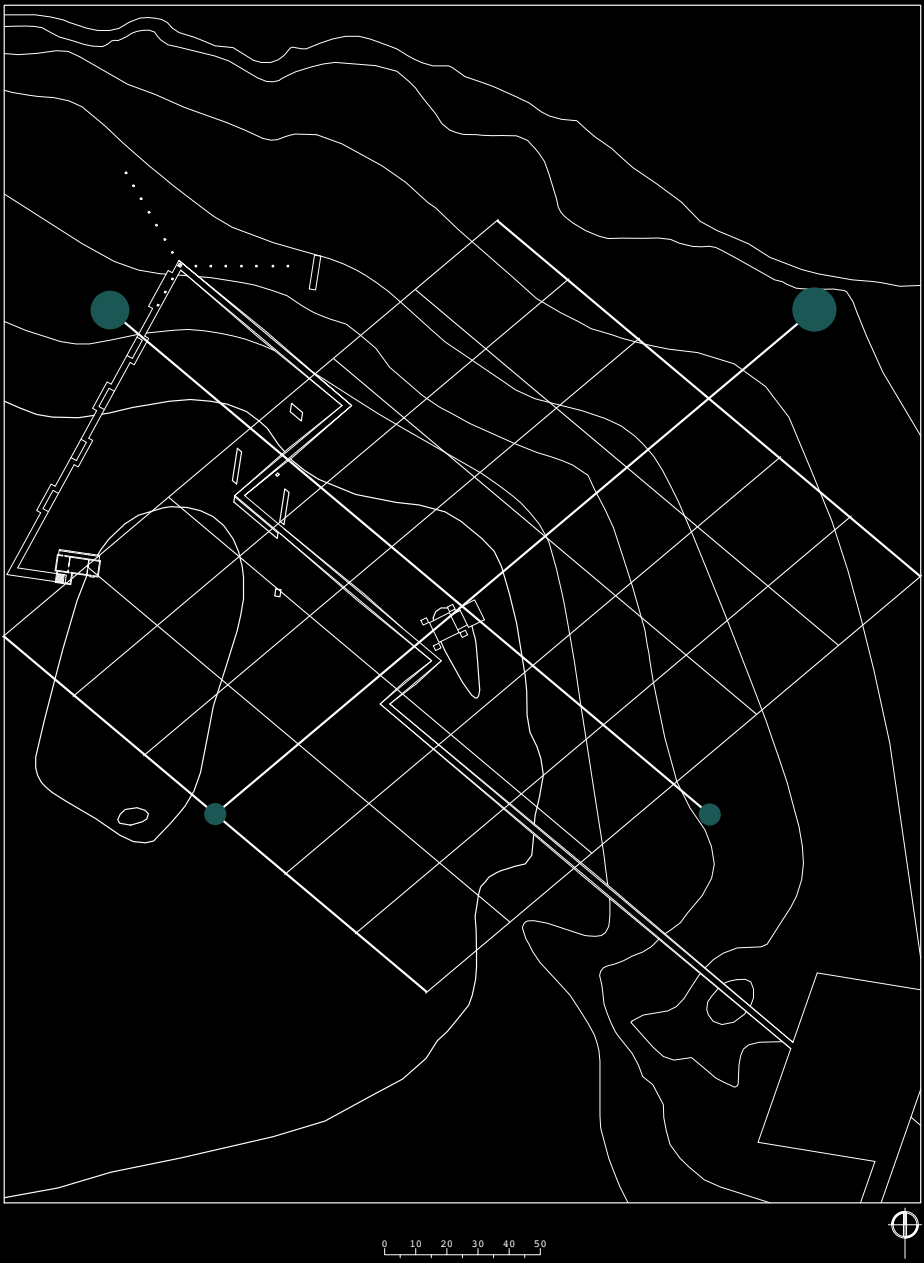


CACHE COLLECTION.

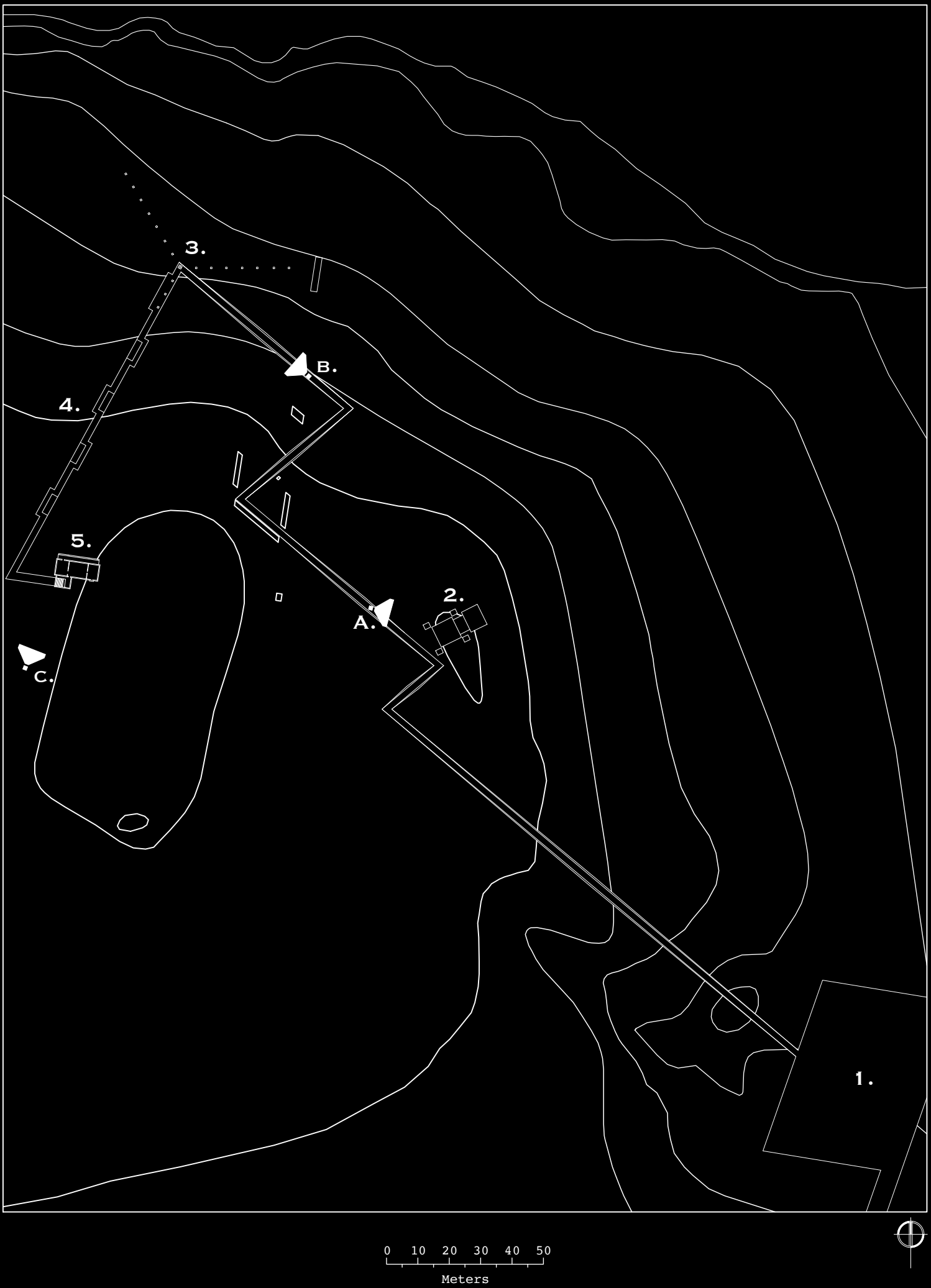


EXIT TUNNEL.

LANDSCAPE INTERVENTION /



These pathways subtly cut through the landscape, with embedded concrete water features which once served as significance to RAF Bampton. Along with a slight visual connection of the Bunker's vertical apertures, providing little reference as to what lies beneath.



PARKING / 1.

WATER FEATURE / 2.

PILLARS / 3.

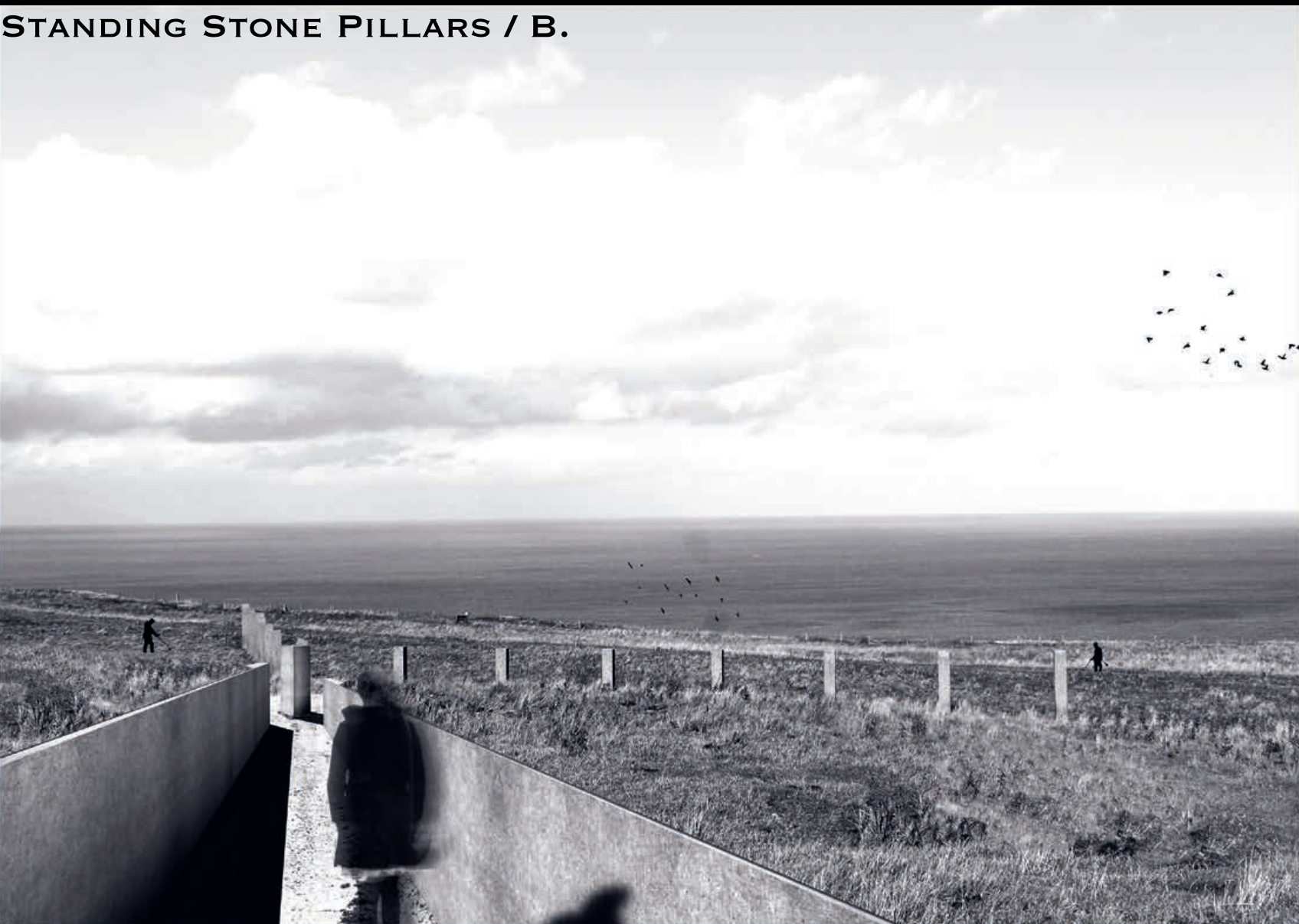
HOLLOW COLUMNS / 4.

BUNGALOW ENTRANCE / 5.

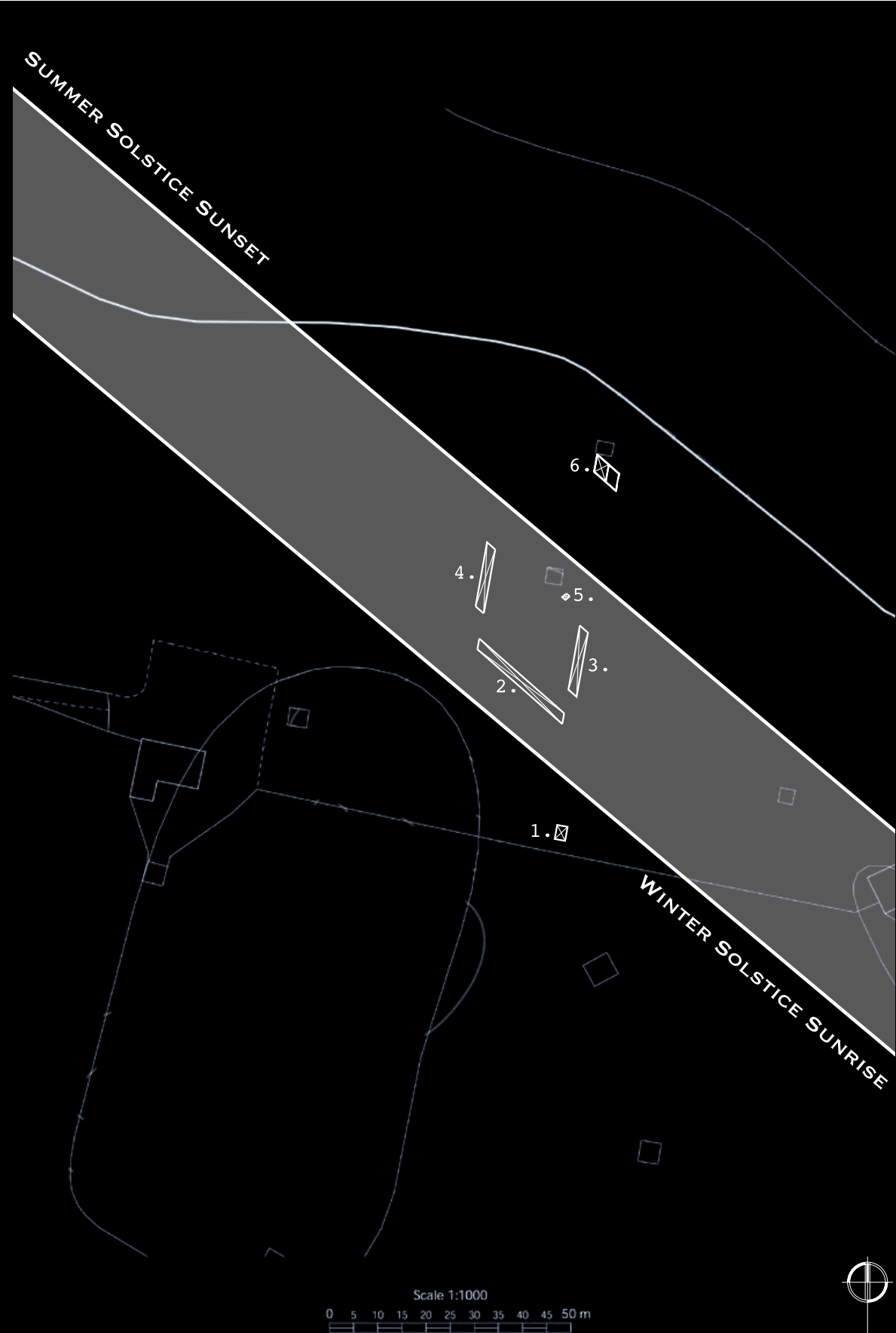
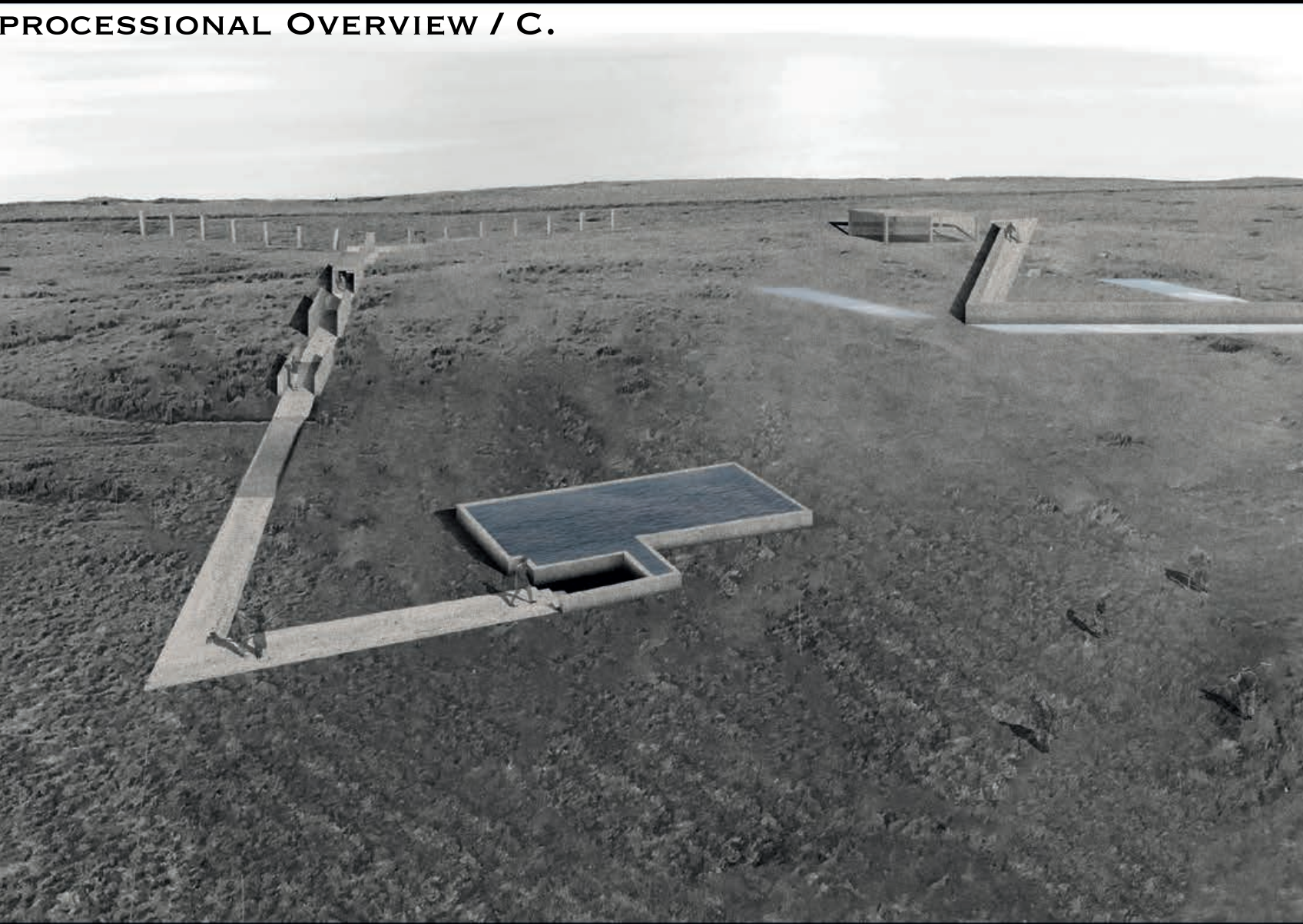
▼ = DIRECTION TAKEN



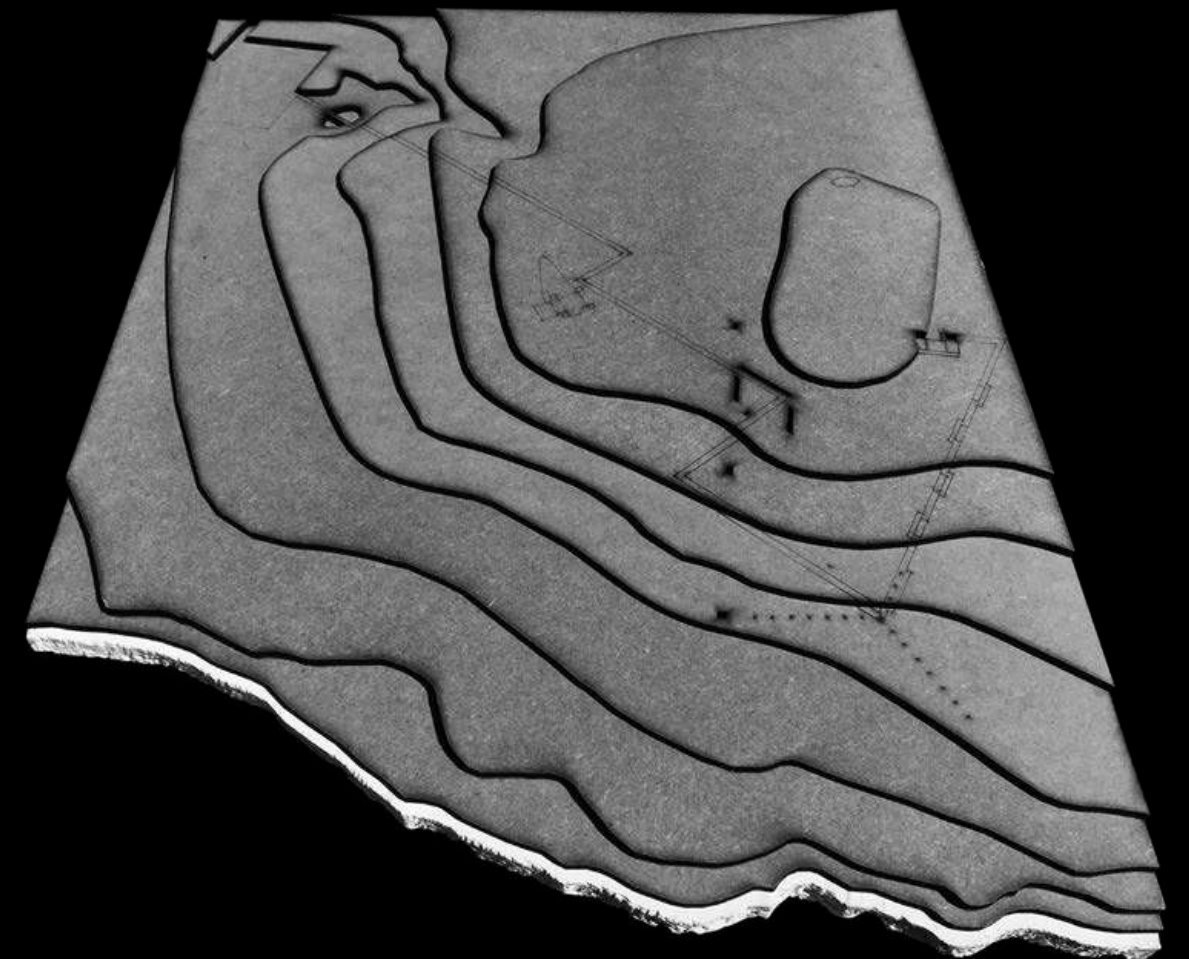
REFLECTION POOL / A.



STANDING STONE PILLARS / B.



1:500 LANDSCAPE MODEL /



PAUSE / 1.



CENTRAL STAIRCASE / 2.



PRESERVE / 3.



DOCUMENT / 4.



CRANNOG SHAFT / 5.



WIND TUNNEL / 6.

INTERIOR
EXPERIENCE &
MATERIALITY

ARTEFACT
EXHIBIT

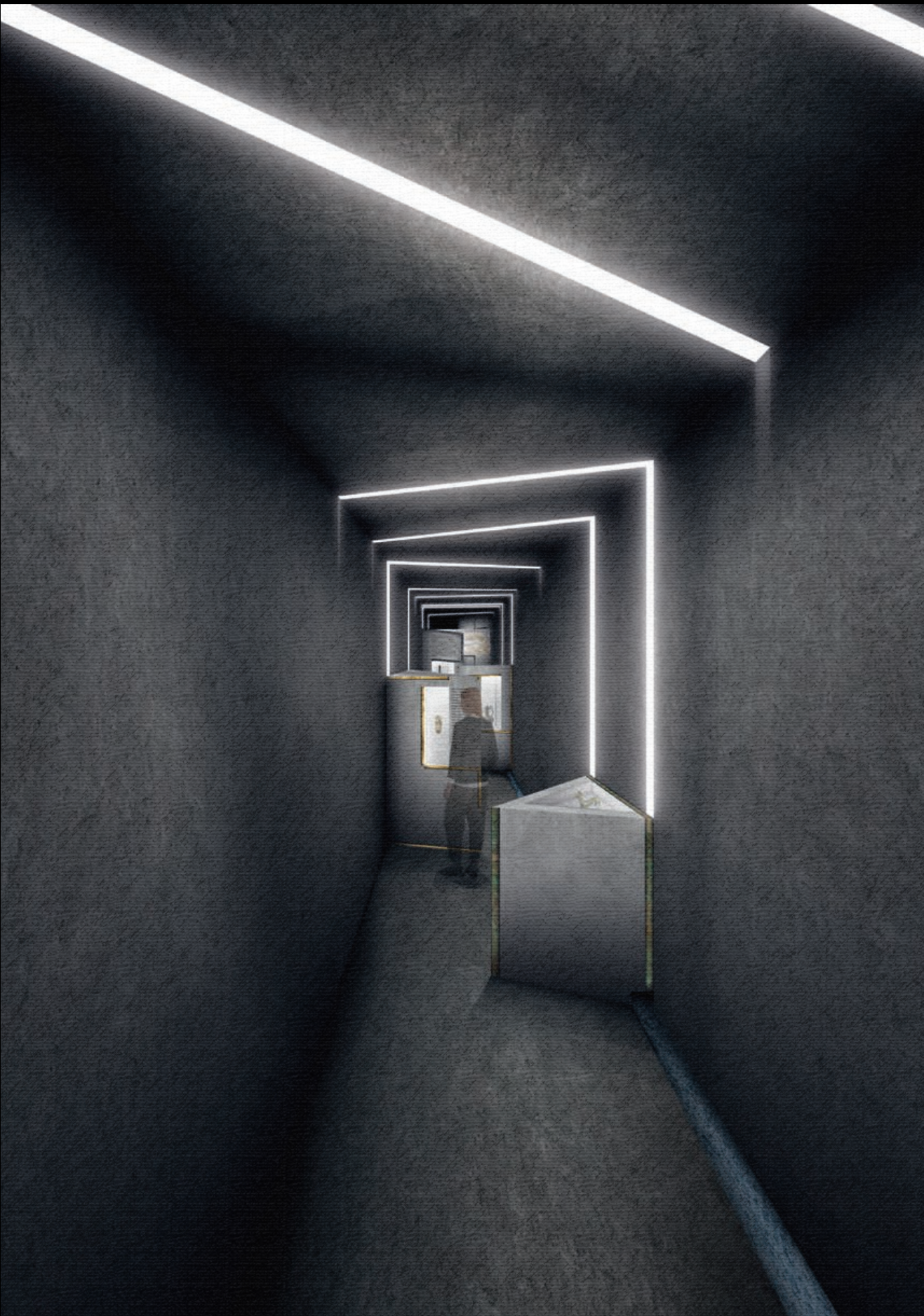
THE SPACES
BENEATH

PAUSE / 1.

EXHIBIT / 3.

SITE COMBINE

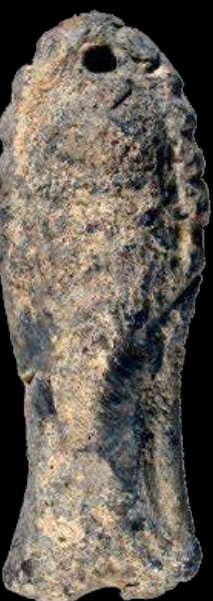
SOUTERRAIN / A.



MEDIEVAL
TOY.
-COPPER



NEOLITHIC
ARROWHEAD.
-FLINT



MEDIEVAL
WEIGHT.
-LEAD

CRANNOG SWORD DISPLAY / B.



ANGLO-SAXON
SWORD.
-COPPPER

MOSAIC EXHIBIT / C.



CHARIOT
MOSAIC.
-CERAMIC

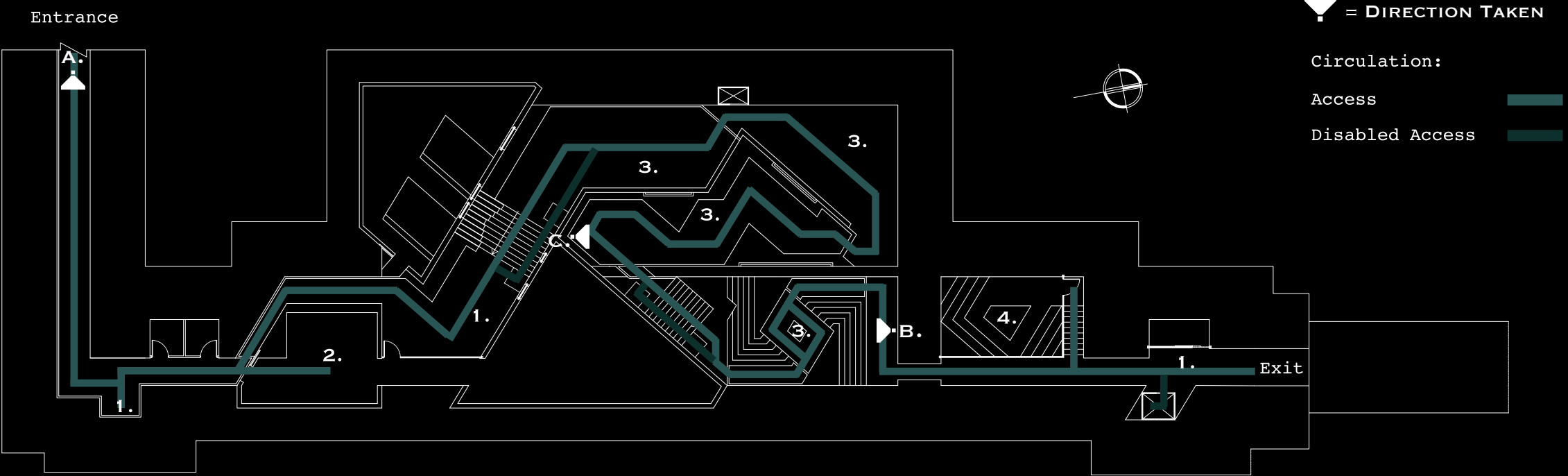


VENUS
MOSAIC.
-CERAMIC

PUBLIC SPACES

RALLY / 2.

CROSSTALK / 4.



THE LAYERS OF
ARCHAEOLOGY

These layers of buried
artefacts formed the
detailing materials within
the different spaces of
'Sweeping Signal'. Where
each archaeological era
has a primary material
compound bound within it,
i.e. Neolithic - flint;
Anglo-Saxon - Gold.



MEDIEVAL ERA
1066AD - 1485AD



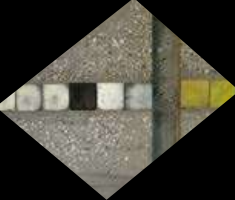
LEAD

ANGLO-SAXON ERA
410AD - 1066AD



GOLD

ROMAN ERA
43AD - 410AD



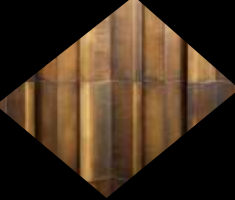
CERAMICS

IRON AGE ERA
500BC - 0AD



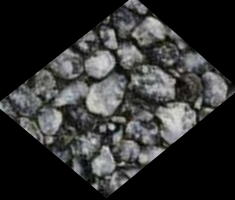
COPPER

BRONZE AGE ERA
3000BC - 600BC

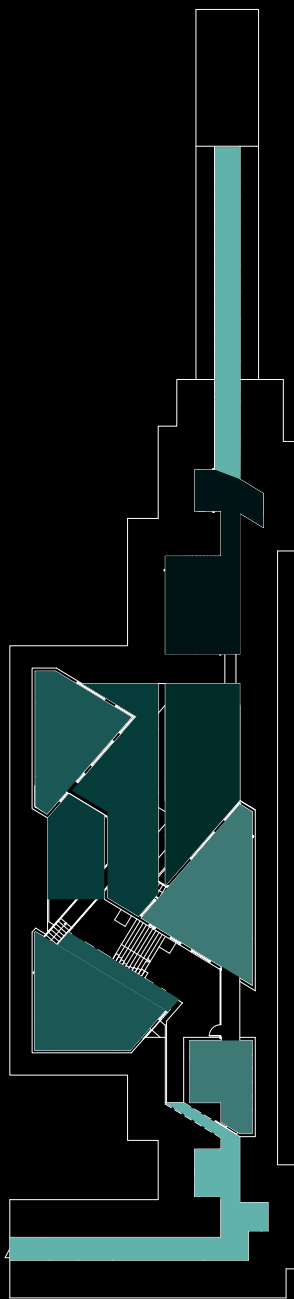
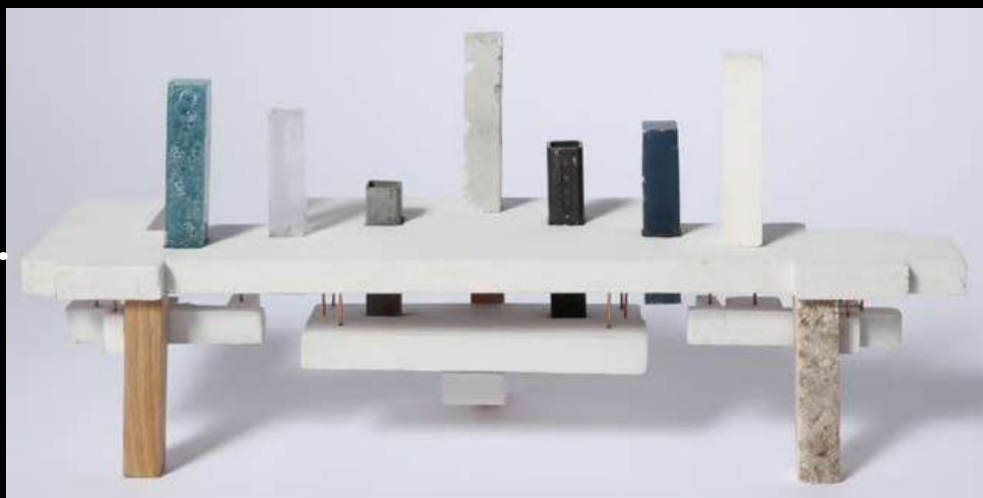
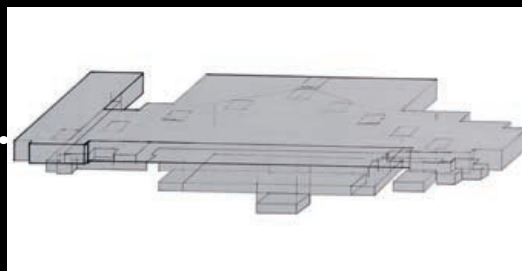
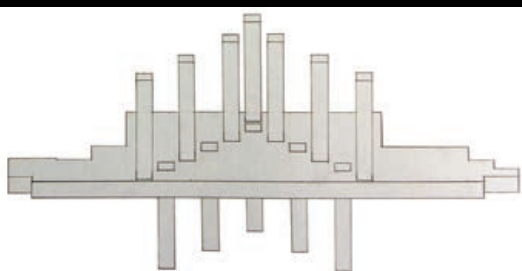


BRONZE

NEOLITHIC ERA
10000BC - 4000BC

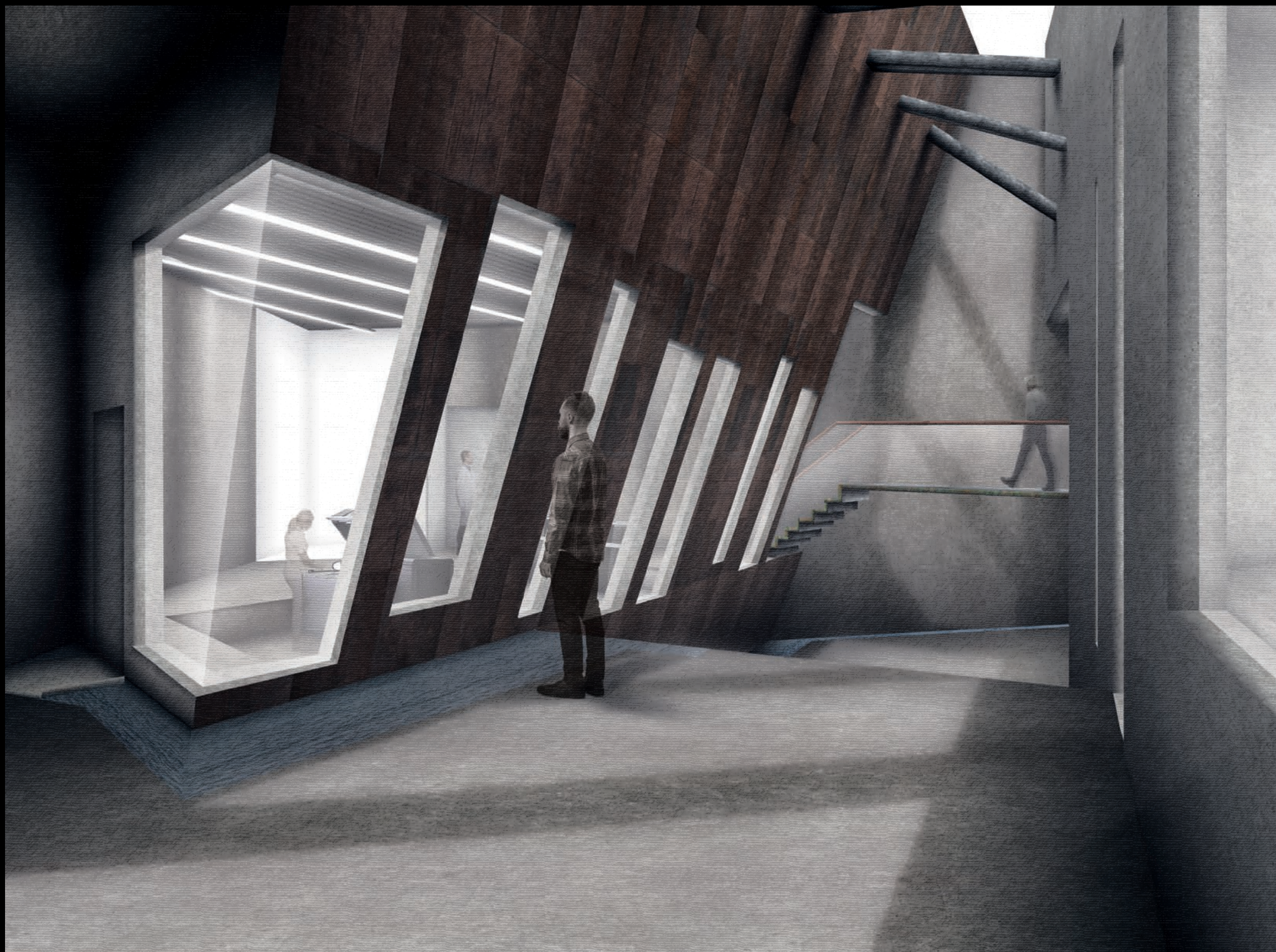


FLINT



INTERIOR
EXPERIENCE
& LIGHT
ALIGNMENT

CENTRAL PUBLIC STAIRCASE / 1



PRESERVE
EXHIBIT

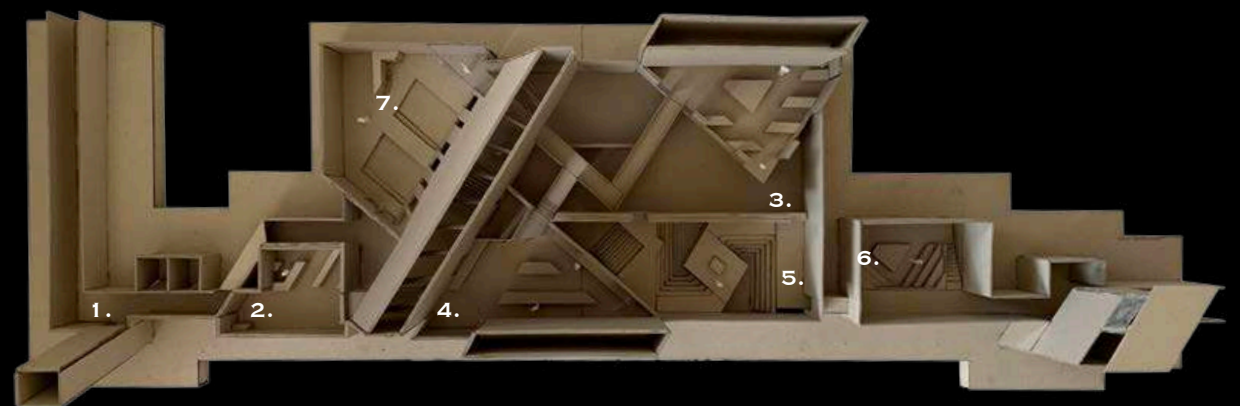
PRESERVE LABORATORY / 2



WEARABLE
CONCEPT



1:50 MODEL



PAUSE / 1.



RALLY / 2.



DOCUMENT / 3.



PRESERVE ENTRANCE / 4.



CRANNOG
SWORD DISPLAY / 5.

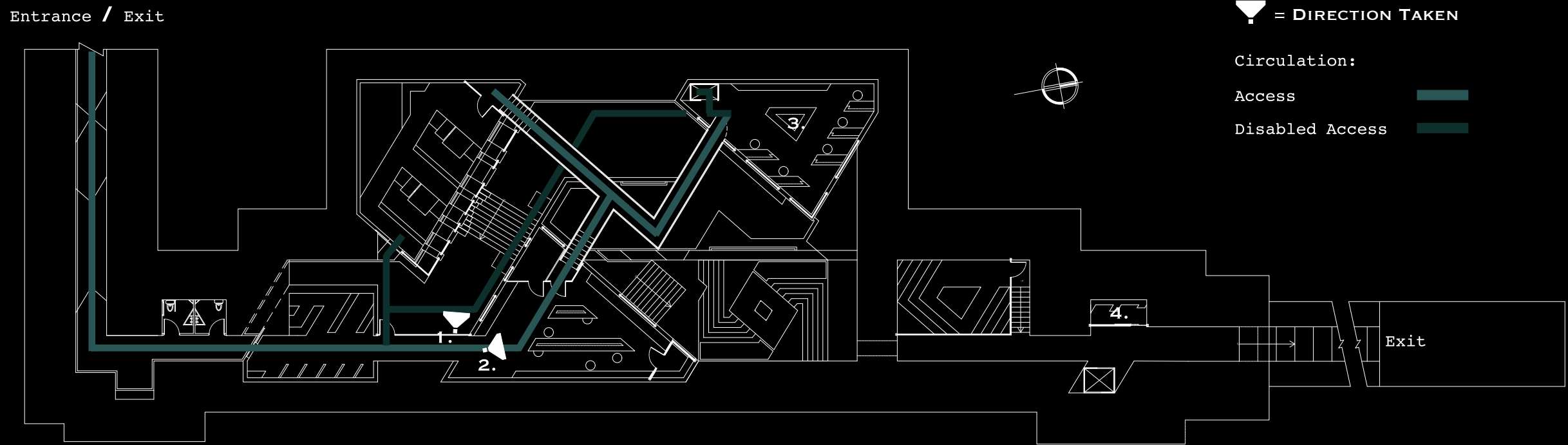


CROSSTALK / 6.



THE SPACES
BENEATH

PRIVATE SPACES



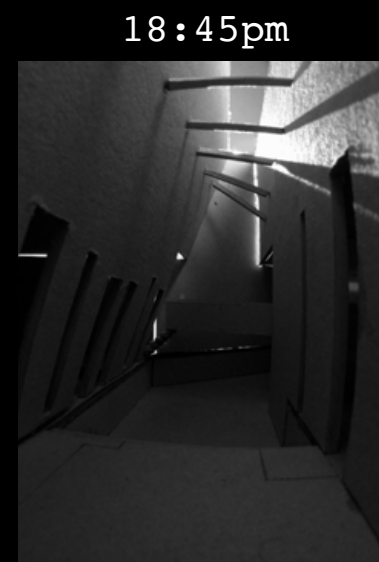
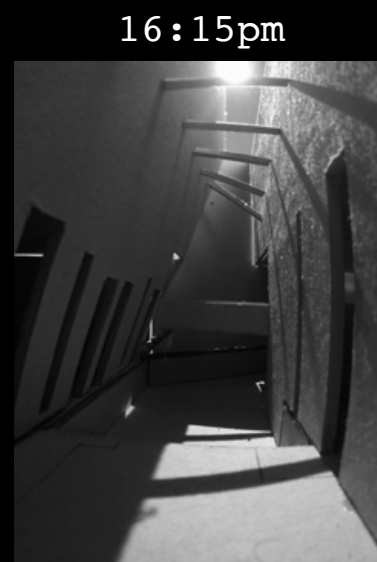
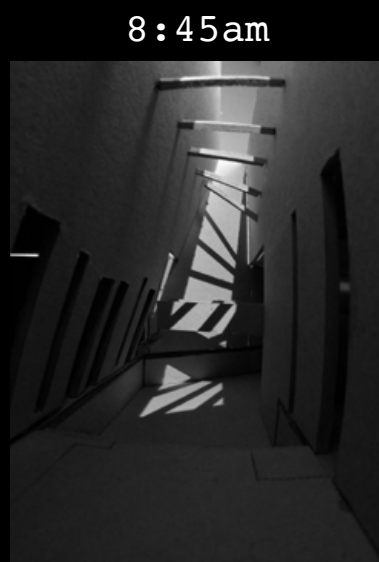
PRESERVE / 1.

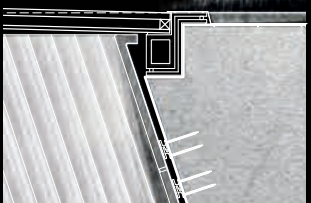
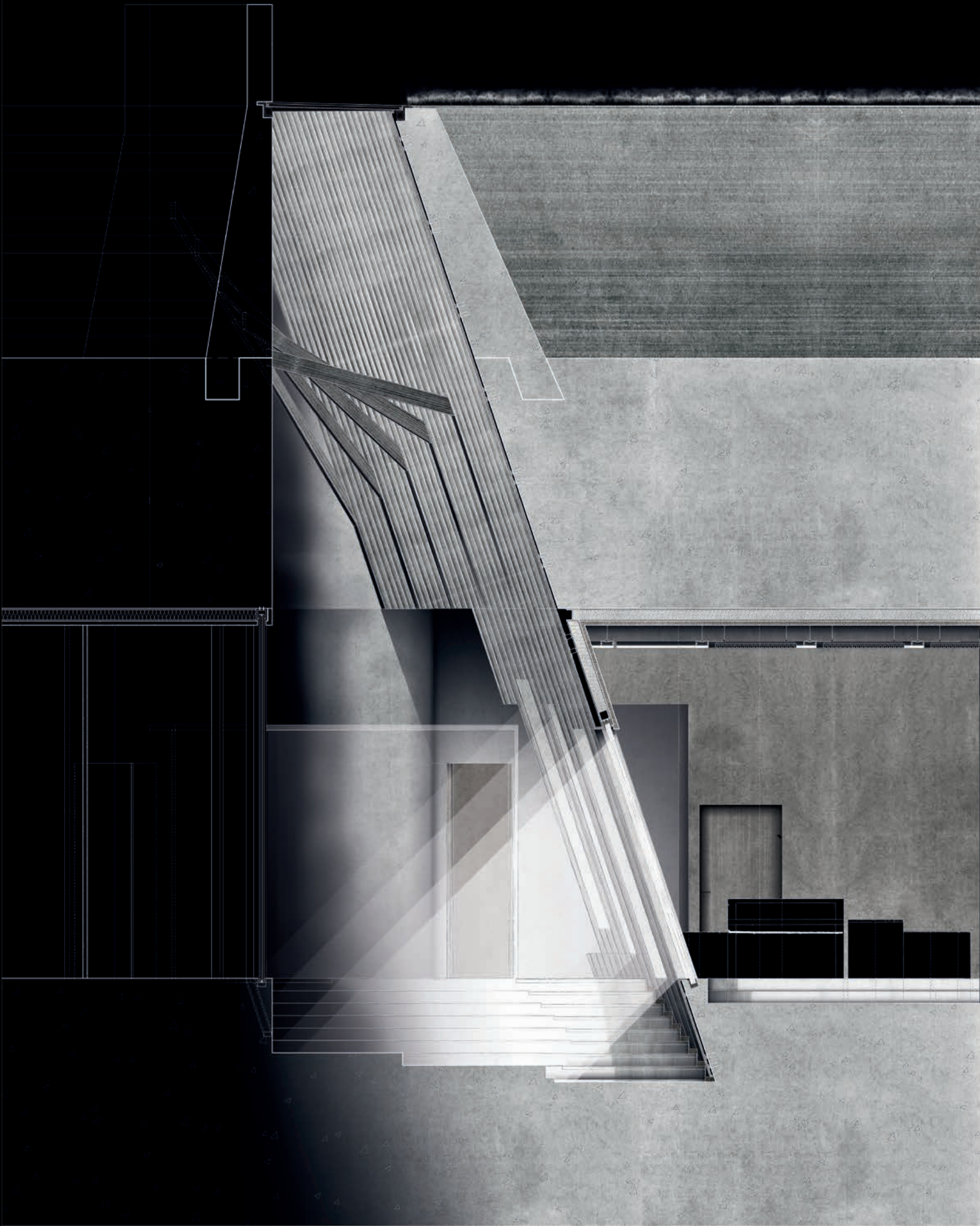
CLONE / 2.

DOCUMENT / 3.

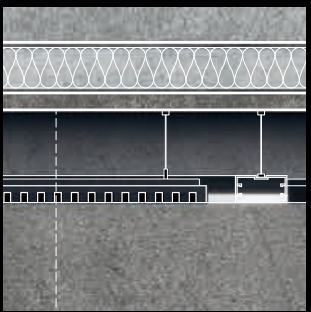
CACHE COLLECTION / 4.

EQUINOX
THROUGH THE
STAIRCASE
LIGHT SHAFT

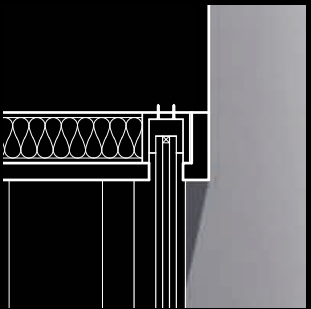




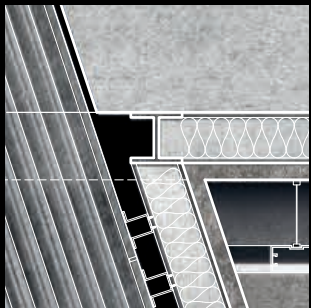
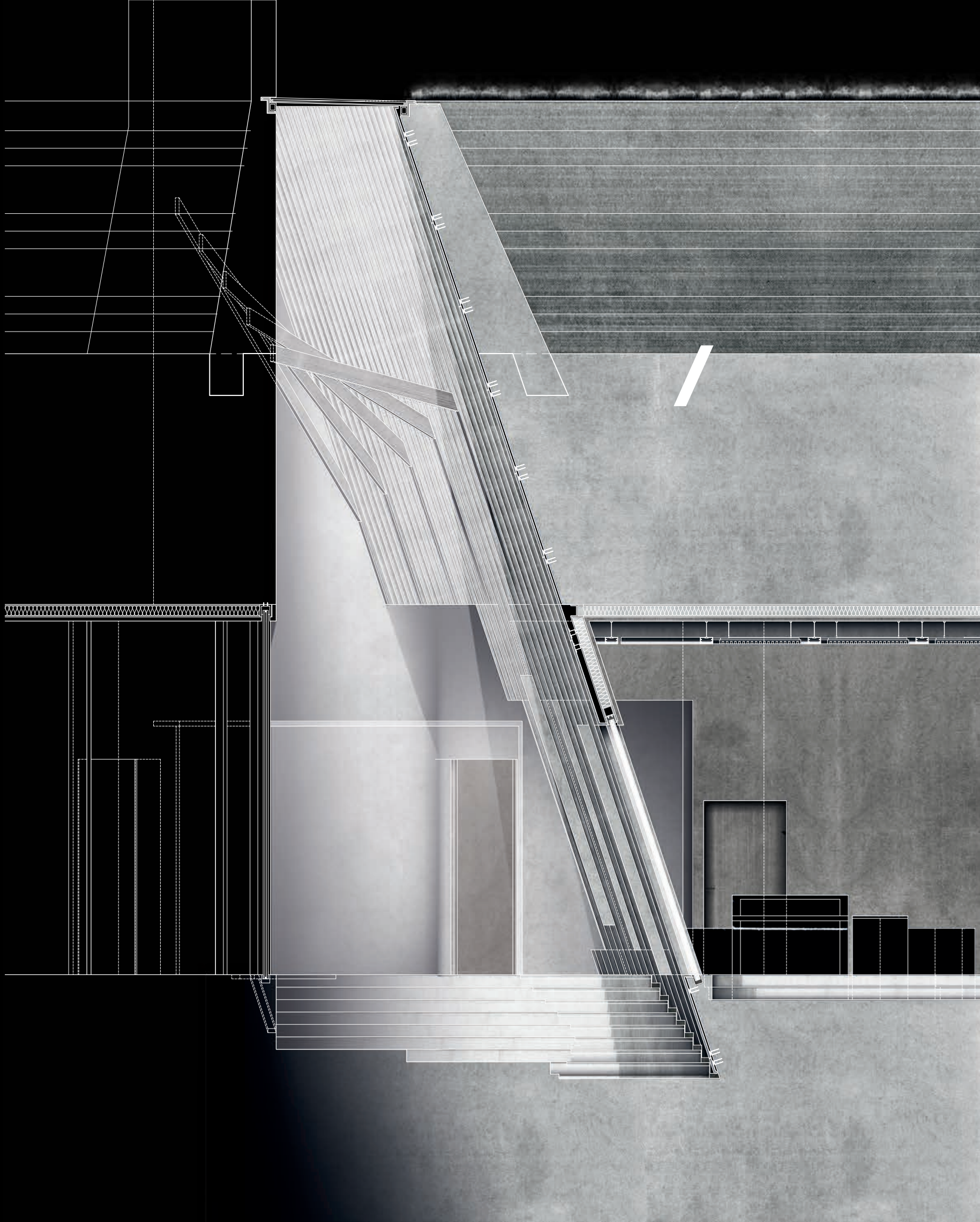
APERTURE FIXING.



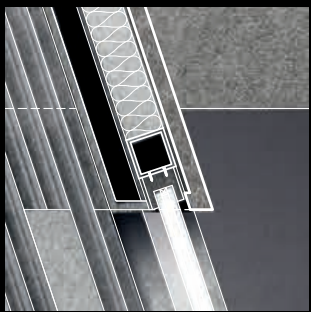
LIGHTING / ACOUSTIC
PANEL FIXING.



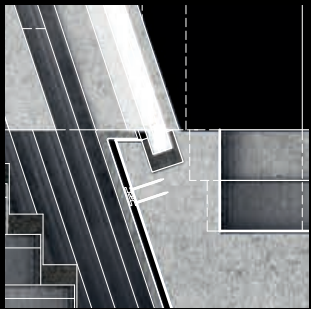
LINEAR WINDOW
FIXING.



I BEAM SUPPORT.



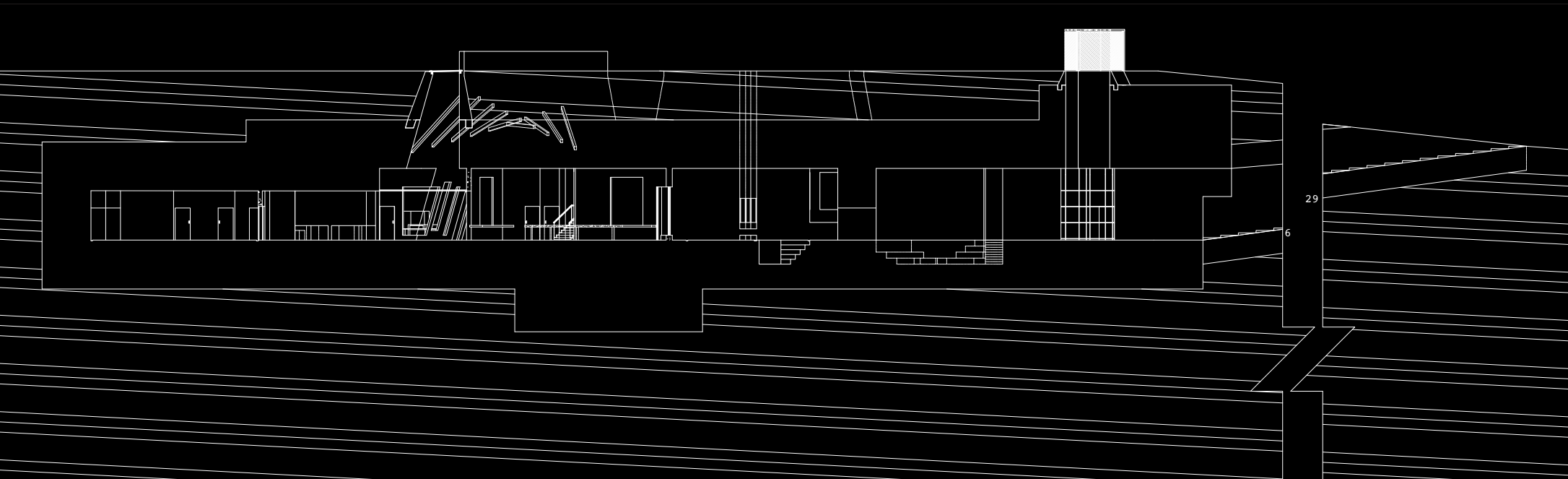
ANGLED WINDOW
FIXING.



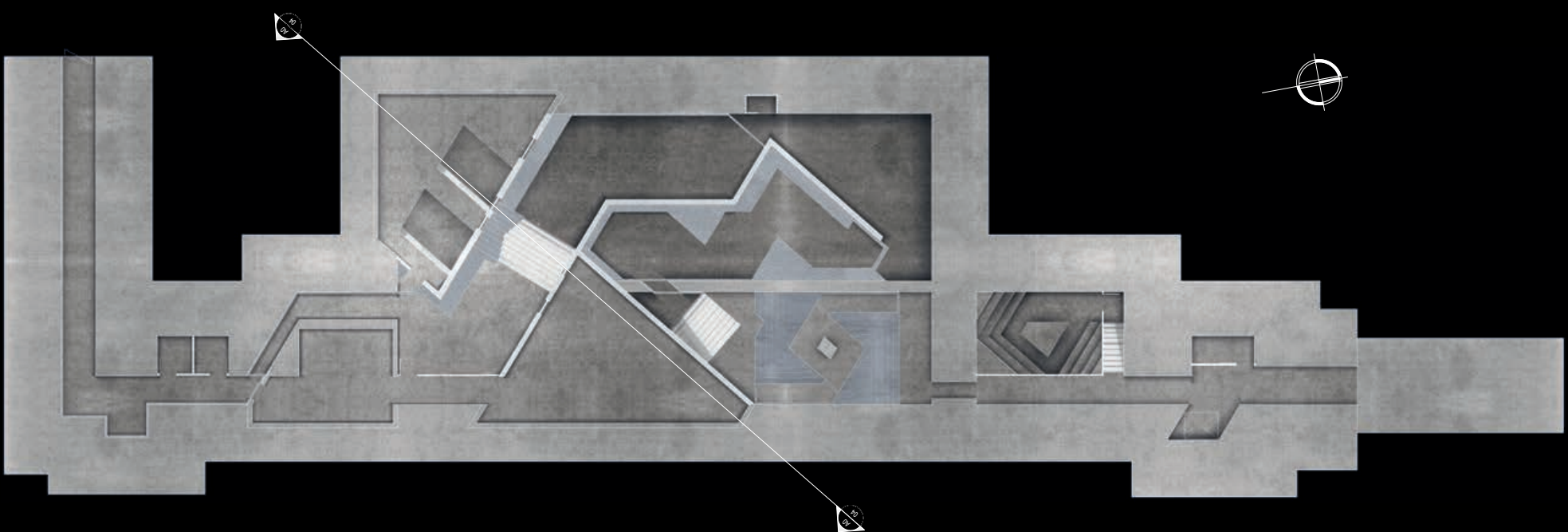
CLADDING FIXING.



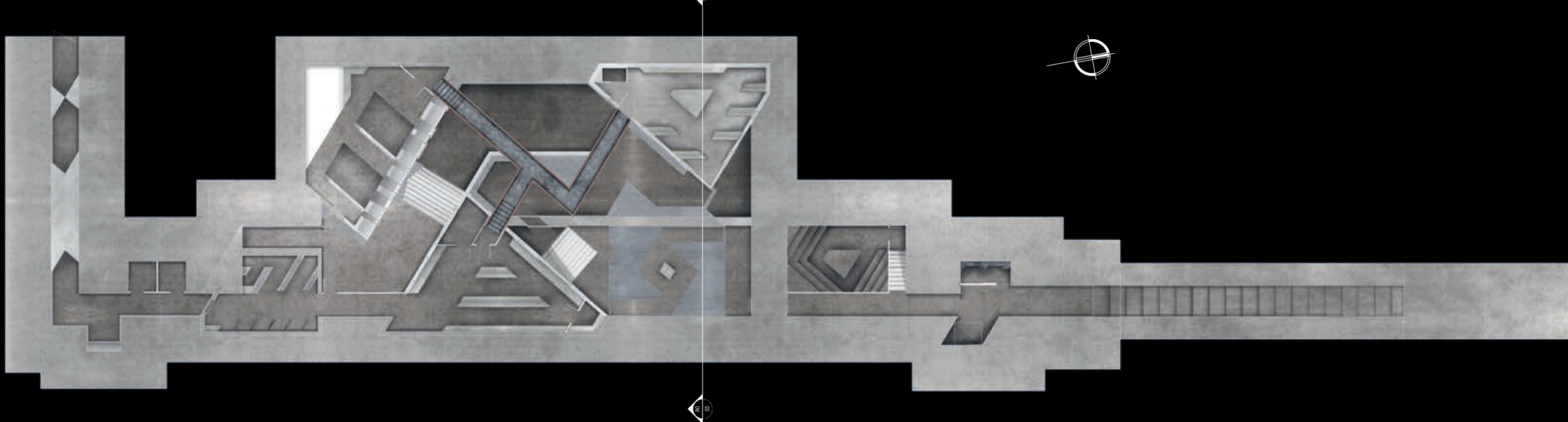
LONG
SECTION 01



RENDERED
EXHIBITION PLAN



RENDERED
DOCUMENT PLAN



REFLECTED
CEILING PLAN

