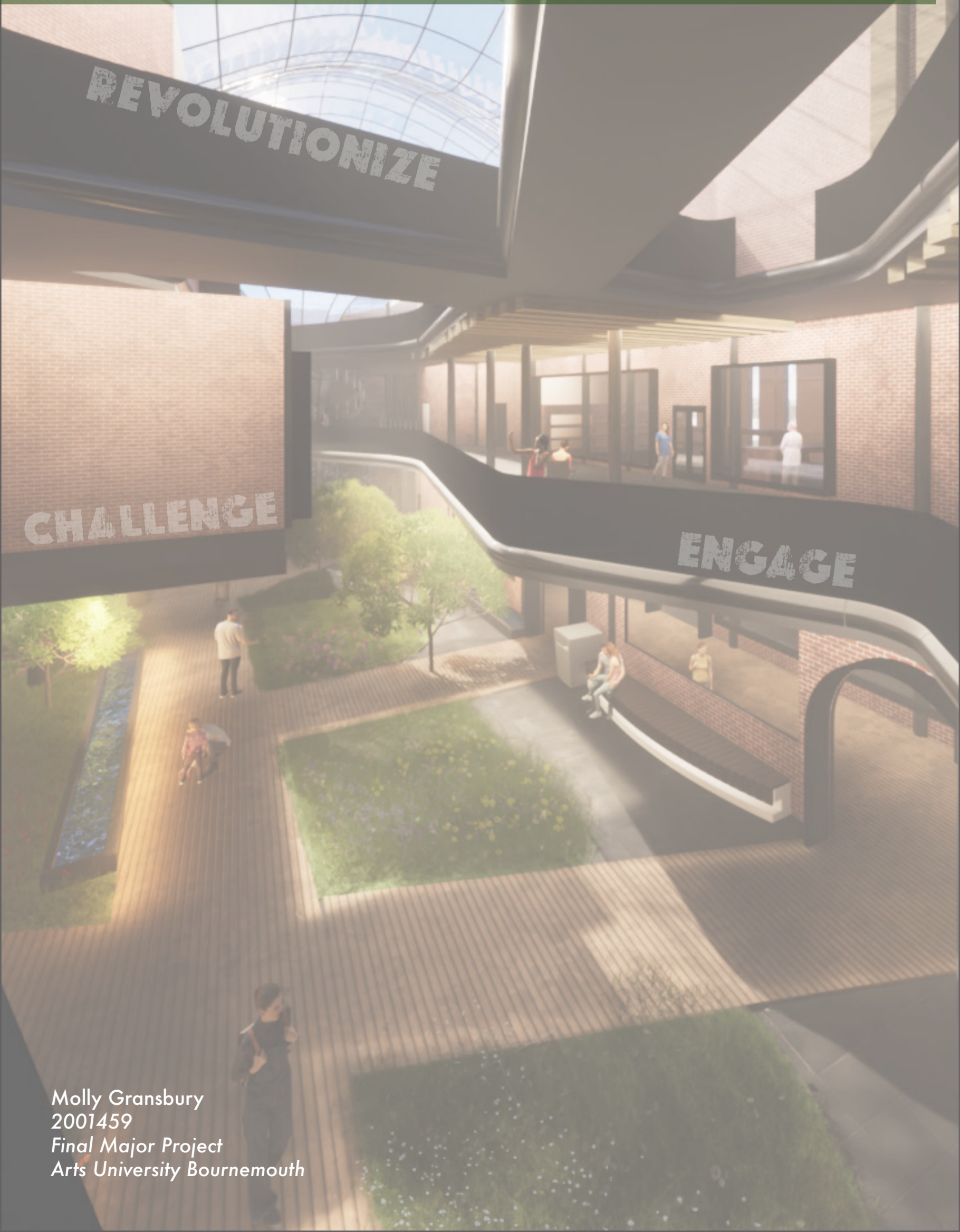


URBAN HEALTH HUB

DESIGN PORTFOLIO

Can we make healthcare more *PATIENT CENTRIC*? Architecture that is centred around the patients that inhabit the space? More *HUMAN* than clinical.



Molly Gransbury
2001459
Final Major Project
Arts University Bournemouth

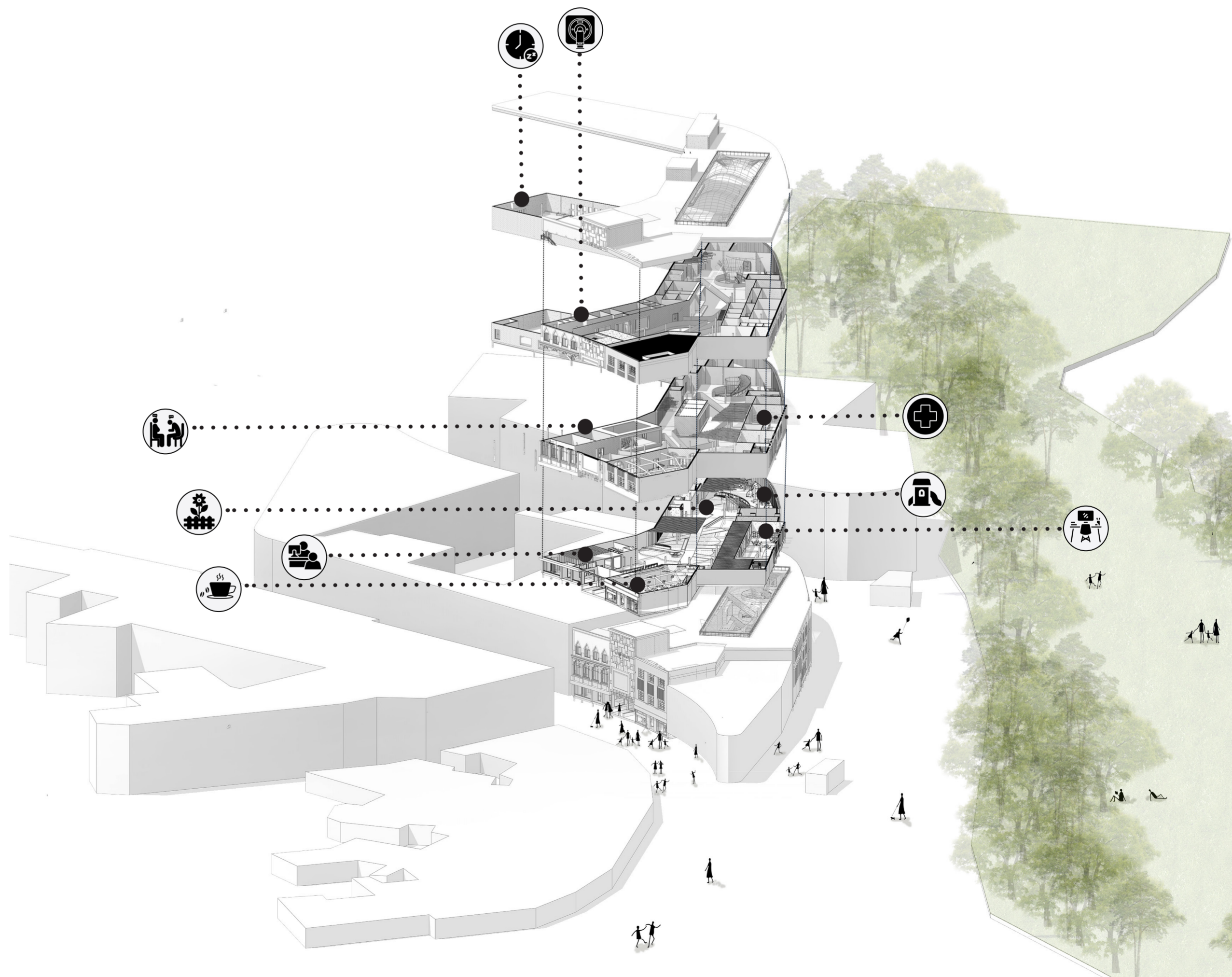
CONCEPT.

Addressing the healthcare crisis with a forward-thinking approach to modern healthcare facilities, the Health Care Hub emerges as an innovative concept. Positioned as an evolutionary environment, it houses diagnostic scanning facilities at the core of the town centre. This initiative responds to the imperative of alleviating patient congestion in hospitals and acknowledges the dwindling vitality of the high street.

This design project seeks to address the dual challenges posed by the decline of the high-street and the ongoing crisis within the NHS. By leveraging these challenges as opportunities for innovation, the project aims to challenge the NHS to recalibrate its focus towards patient-centred care thereby revolutionising the healthcare experience.

Through meticulous and user-centred design principles, the project objective is to establish a facility that not only delivers cutting edge diagnostic services but also emphasizes comfort, convenience, and a positive patient journey. By strategically siting this diagnostic centre on the high-street, the project aims to improve accessibility and seamlessly integrate healthcare into the individuals daily life.

In essence, the project embodies a deep-seated commitment to transforming healthcare delivery by placing patients at the forefront and fostering a sense of community engagement.



BRIEF AND USER DEVELOPMENT

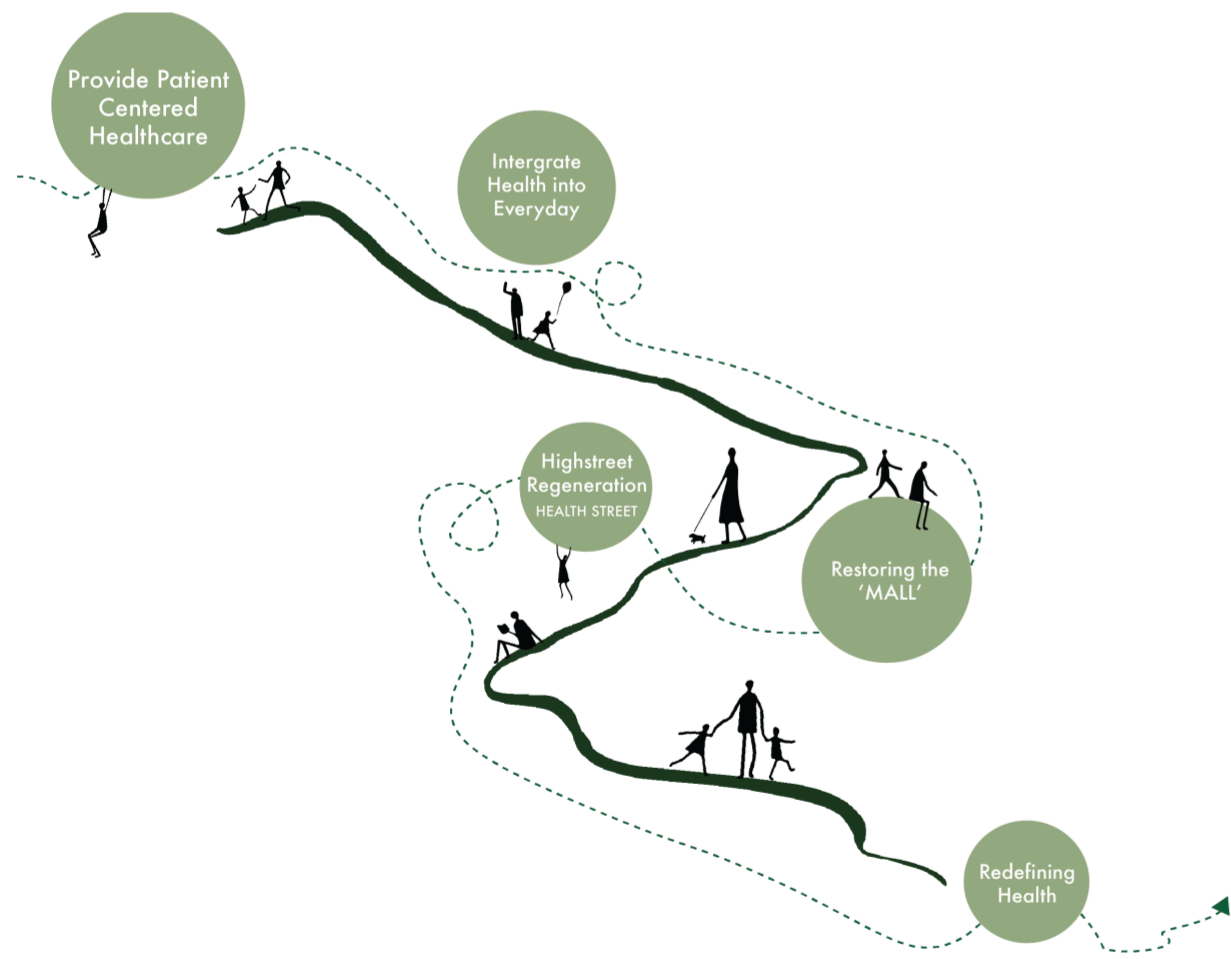
LO1

PROBLEM.

Currently, we find ourselves in a world witnessing continuous population growth and an aging demographic, with this comes a multitude of health concerns. Moreover the landscape of hospitals has transformed into expansive entities, resembling intricate machines where patient-centred care has taken a back-seat, shifting focus toward input and output. The evolution of this has given rise to what we see as super hospitals characterized by organized chaos.

The impact of Covid 19 highlighted these issues for hospitals and underscored the operational challenges this causes.

All these paired together has caused the patients experience within hospitals to decline and as a response there has been a negative stigma around hospitals.



STATEMENT OF INTENT.

The Urban Hub aims to dispel this stigma by revitalizing the image of the NHS and reinstating its former esteem. By fragmenting facilities into smaller units, each with a unique focus, there is room for transformative change, fostering a more efficient and patient-centred care model.

Operating on the principle of seamlessly integrating everyday activities with healthcare services, particularly diagnostics, The Urban Hub pushes the boundaries. It calls upon the NHS to re imagine their 'waiting' areas and integrate healthcare seamlessly into daily routines, abolishing segregation.

COMMERCIAL ROAD, BOURNEMOUTH

The Urban Hub is situated prominently on the bustling High Street of Bournemouth, nestled within the busiest pedestrianized stretch. A neglected mall as well as serving as a thoroughfare for pedestrians navigating towards the bustling High Street. Its strategic location amidst the hustle and bustle of the city ensures its frequent use by the local population.



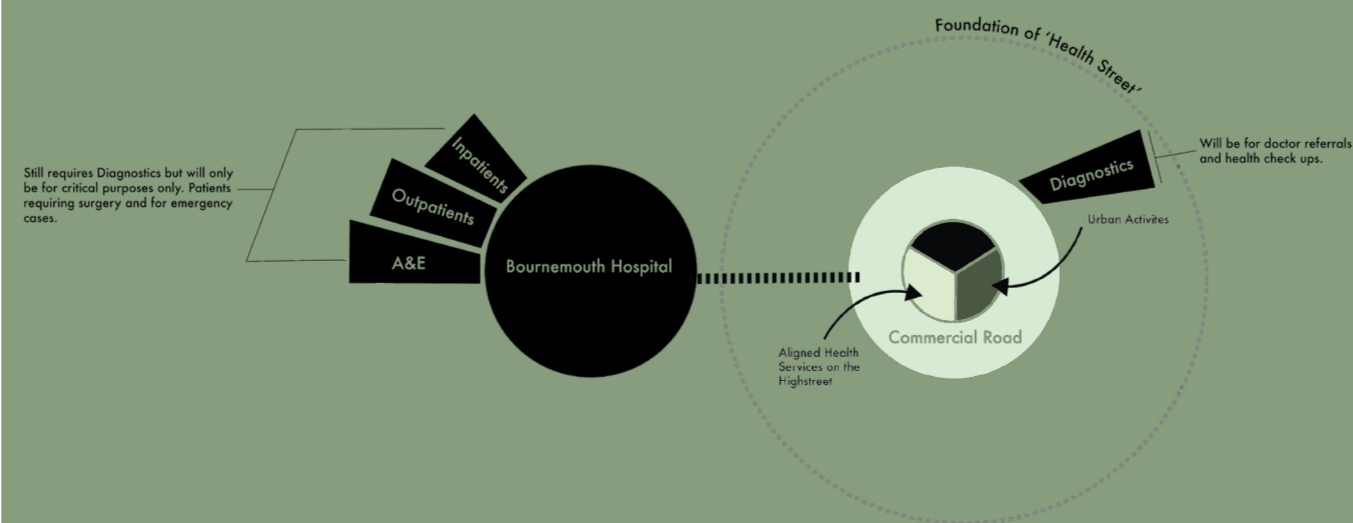
Preserving the essence of the mall's heritage is integral to the design of the hub, serving as a tribute to its history and functioning as a promotional tool to gather attention. By integrating health facilities within this space, they become seamlessly intertwined with the vibrancy of the High Street and its purpose, fostering accessibility and visibility within the community.



Historical Shopping Center - The Avenue Bournemouth (n,d)



MECHANICS BEHIND RELOCATION.



The impact of moving diagnostic facilities to the high street and its implications for Bournemouth Hospital and the surrounding area.

OPERATIONAL PRECEDENT.



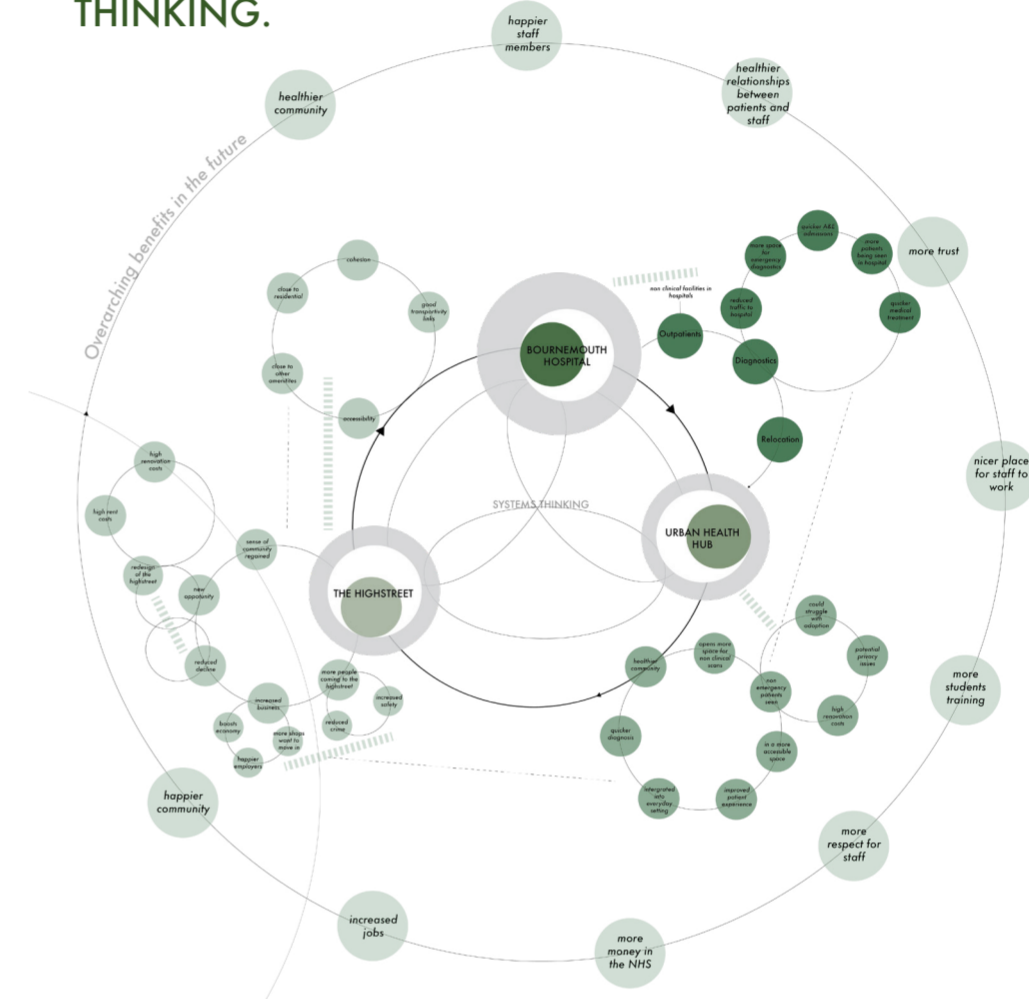
Southlands Community Diagnostic Centre - McBains (2023)



This facility establishes an interconnected network of systems bridging the high street and the hospital. By situating diagnostics facilities on the high street, space is freed up in the A&E department for critical scans. This results in expedited treatment for patients in the hospital, both critical and non-critical alike. Furthermore, this initiative contributes to transformative change within the high street, fostering regeneration and attracting more people, thus boosting economic revenue.

Moreover, the ripple effects extend into the future, creating job opportunities, fostering healthier relationships between professionals and patients, and building trust within the community.

SYSTEMS THINKING.



USER TYPES.

User 1.1



Happy Senior Man Sitting at Home - iStock

User 1.2



Mother Daughter Family Portraits - Susannah Photo

User 1.3



Young Man in the City - iStock

User 2.1



Businessman Office Image - Stock Adobe

User 2.2

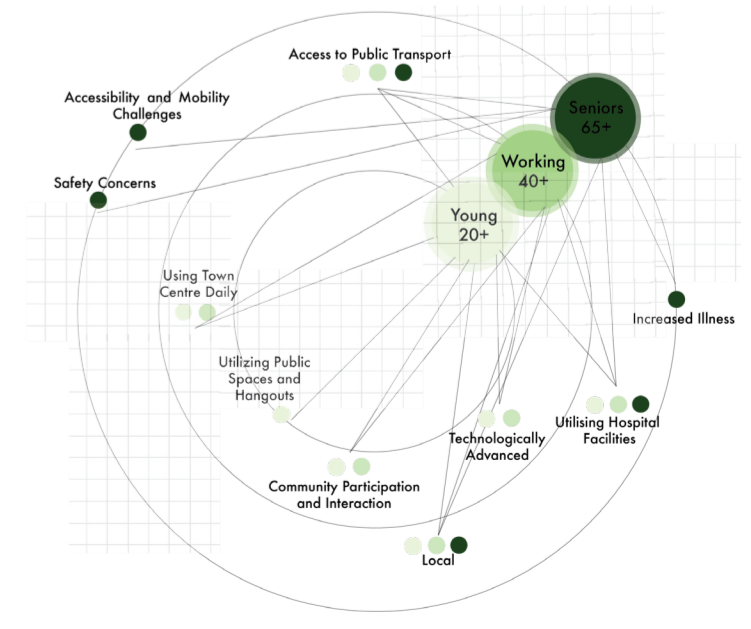


Middle Aged Woman - Stock Adobe

USER ANALYSIS.

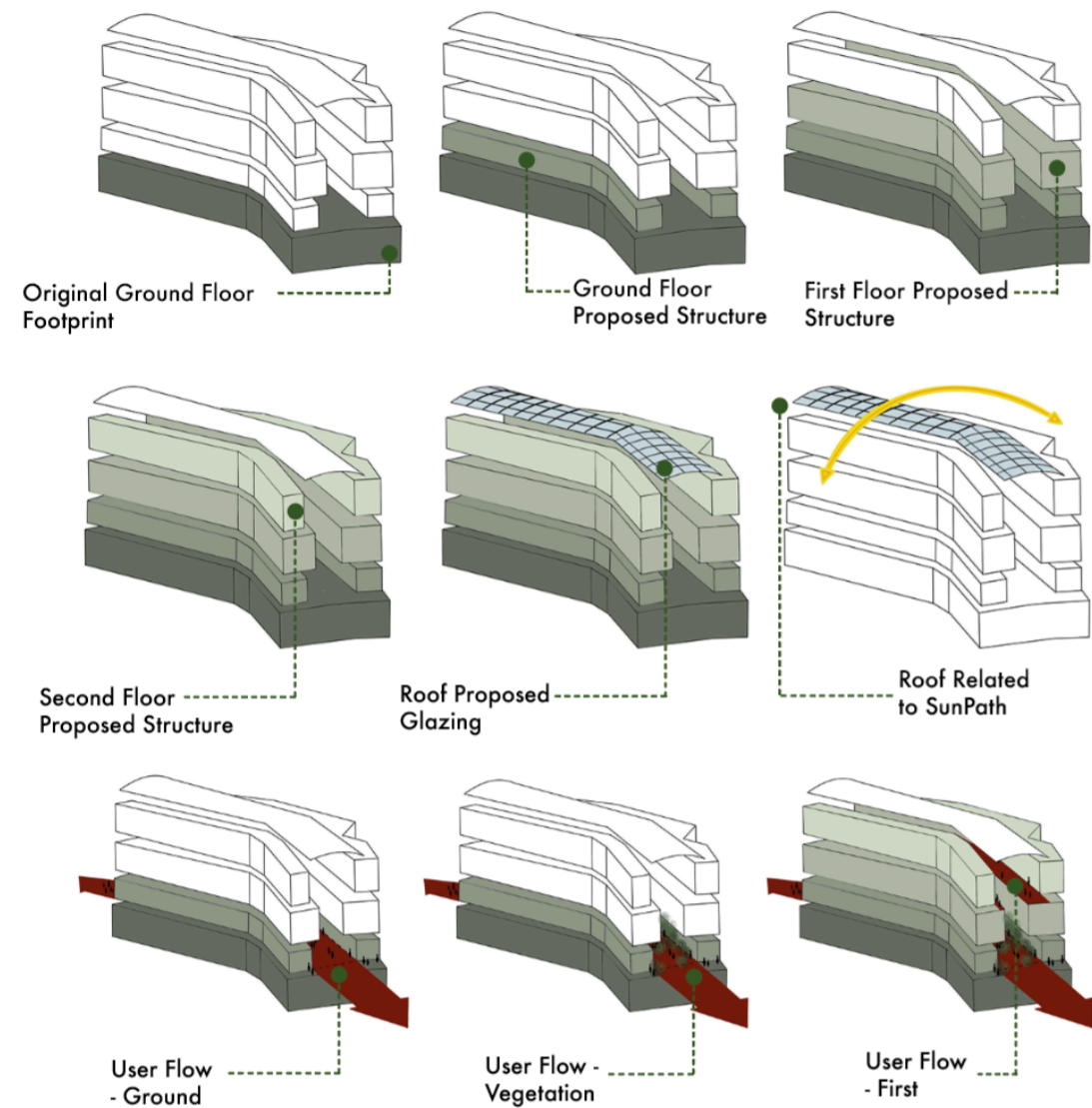
All these diverse elements align seamlessly, akin to a jigsaw puzzle, with this facility serving as a bridge between them all. By integrating healthcare into the high street, not only are hospitals relieved of certain pressures, but it also catalyses activity within the community. This initiative has the potential to bolster the local economy and unlock new opportunities for the high street.

Moreover, diagnostics, primarily utilized by the older population, are a key focus of this initiative. By attracting these patients to the facility for their treatments, they are more likely to engage with the surrounding community, whether by running errands or participating in other activities. This, in turn, fosters a stronger sense of community within Bournemouth.



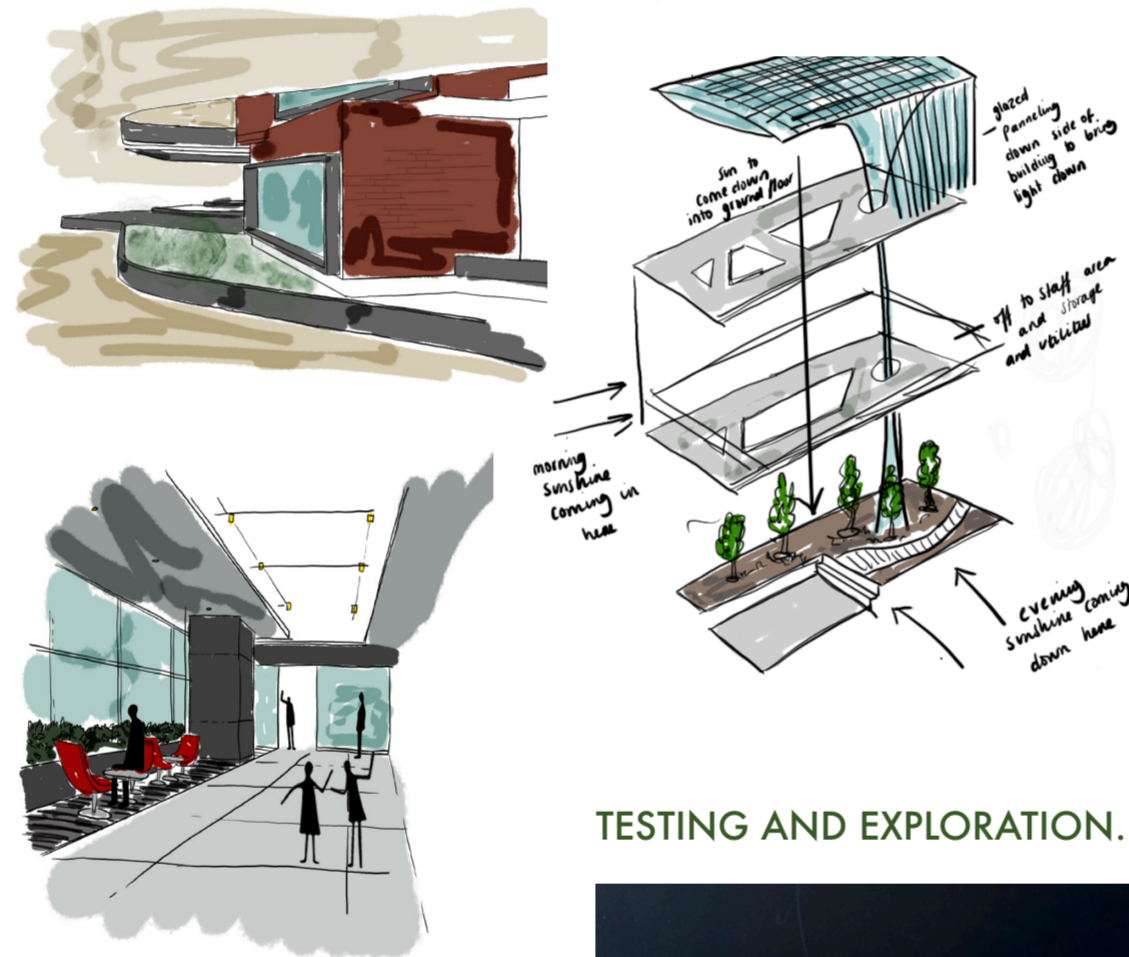
DESIGN DEVELOPMENT

LO2



CONCEPT SKETCHING.

Initial concept sketching was conducted to explore methods of integrating natural elements into the lower floors, thereby bringing light and outdoor ambiance inside—an essential consideration in healthcare design. Additionally, the sketches delved into further exploration of the mall aspect by incorporating extensive voids, aiming to enhance spatial dynamics and visual connectivity throughout the facility.



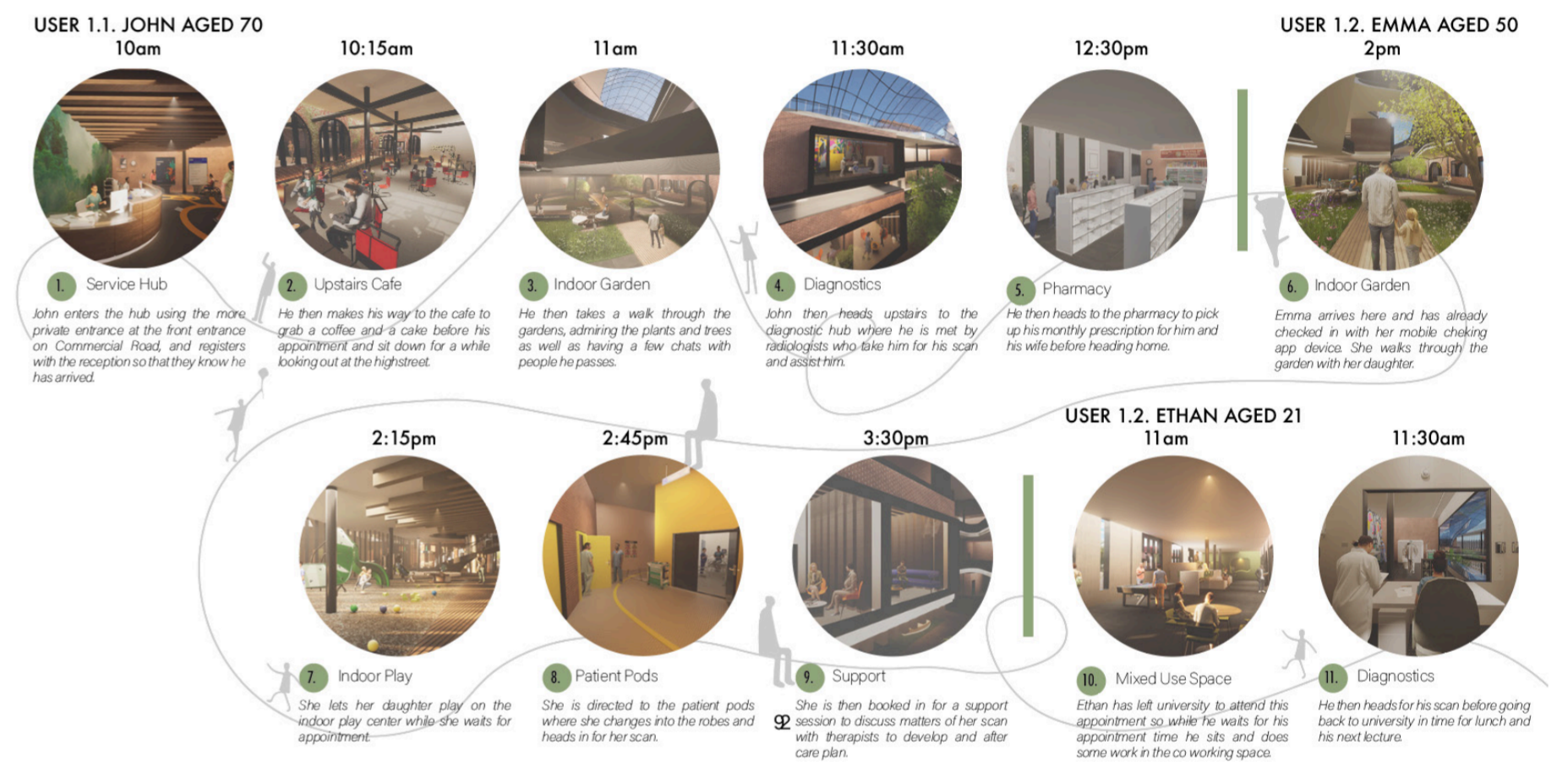
The overarching inspiration driving the design concept was the notion of seamlessly blending the outdoor high street ambiance indoors, aiming to bridge the gap between healthcare and everyday life. This integration seeks to dismantle stereotypes associated with hospitals and enhance patient care by delivering a more engaging experience. By incorporating innovative design principles, the project challenges conventional healthcare settings, ultimately fostering a patient-centred care environment.

DESIGN PRECEDENT.

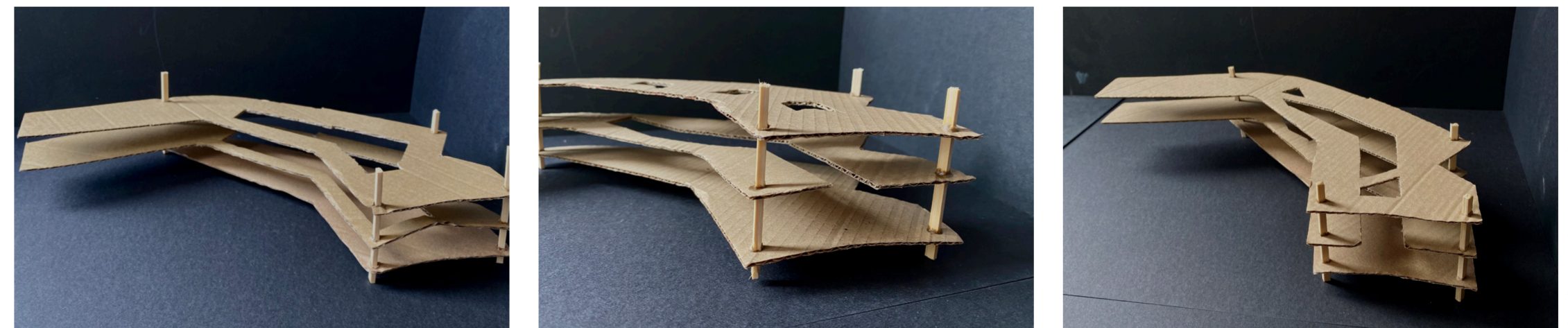


J.S Kings Cross Station - ArchDaily

USER JOURNEY EXAMPLE.



TESTING AND EXPLORATION.

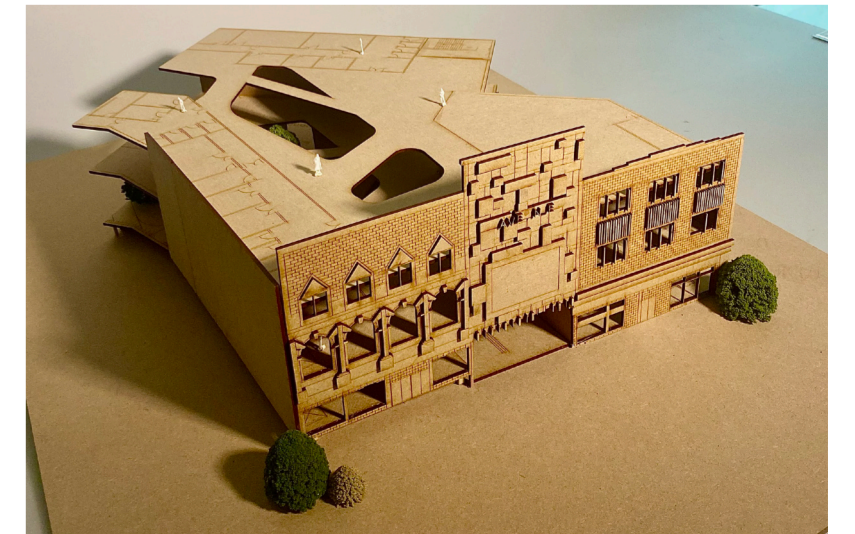


Experimenting with 1:200 models helped me to better understand how to incorporate natural light through the building using the rooftop

DESIGN PRECEDENT.



Mega-Foodwalk-Landscape Collaboration - ArchDaily



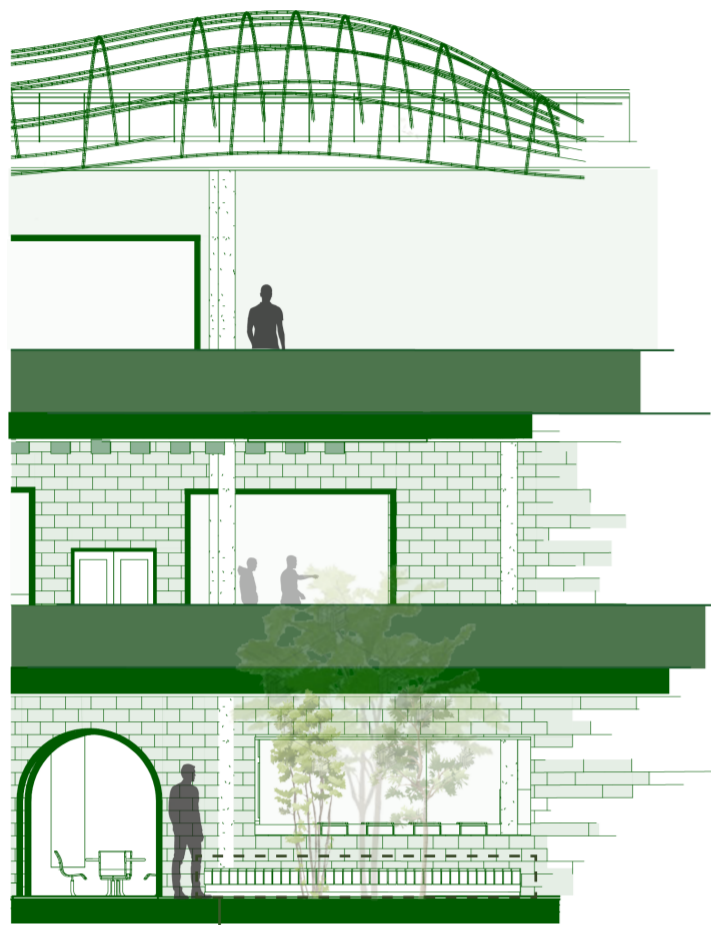
TECHNICALITY AND MATERIALITY

LO3

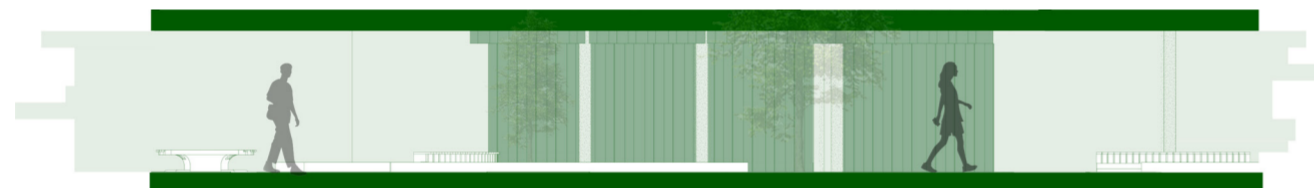


North West View Point

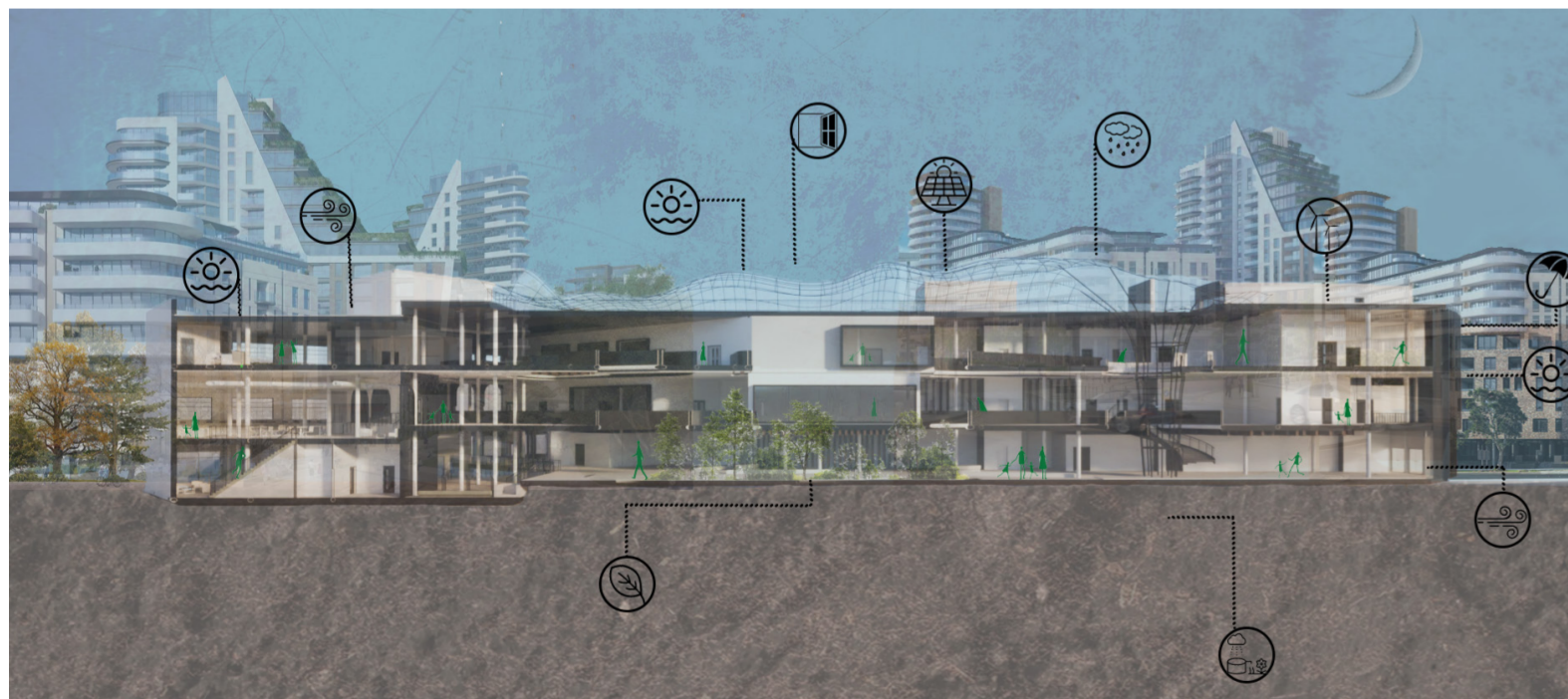
The design of the Hub features a roof glazing system akin to that of Kings Cross Station. This innovative approach also integrates a rainwater harvesting system, allowing for the recycling of water to be utilized throughout the entire facility. This recycled water is employed in the flushing systems and water features in the ground floor, thereby reducing the overall water consumption of the facility.



Detail 2



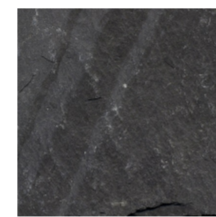
SUSTAINABILITY.



Pintos, P Jewel Changi Airport - ArchDaily



DESIGN PRECEDENT.



1. Slate



2. Brick



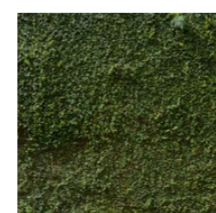
3. Black Metal



4. Timber



5. Timber Beams



6. Greenery

MAIN MATERIALS.

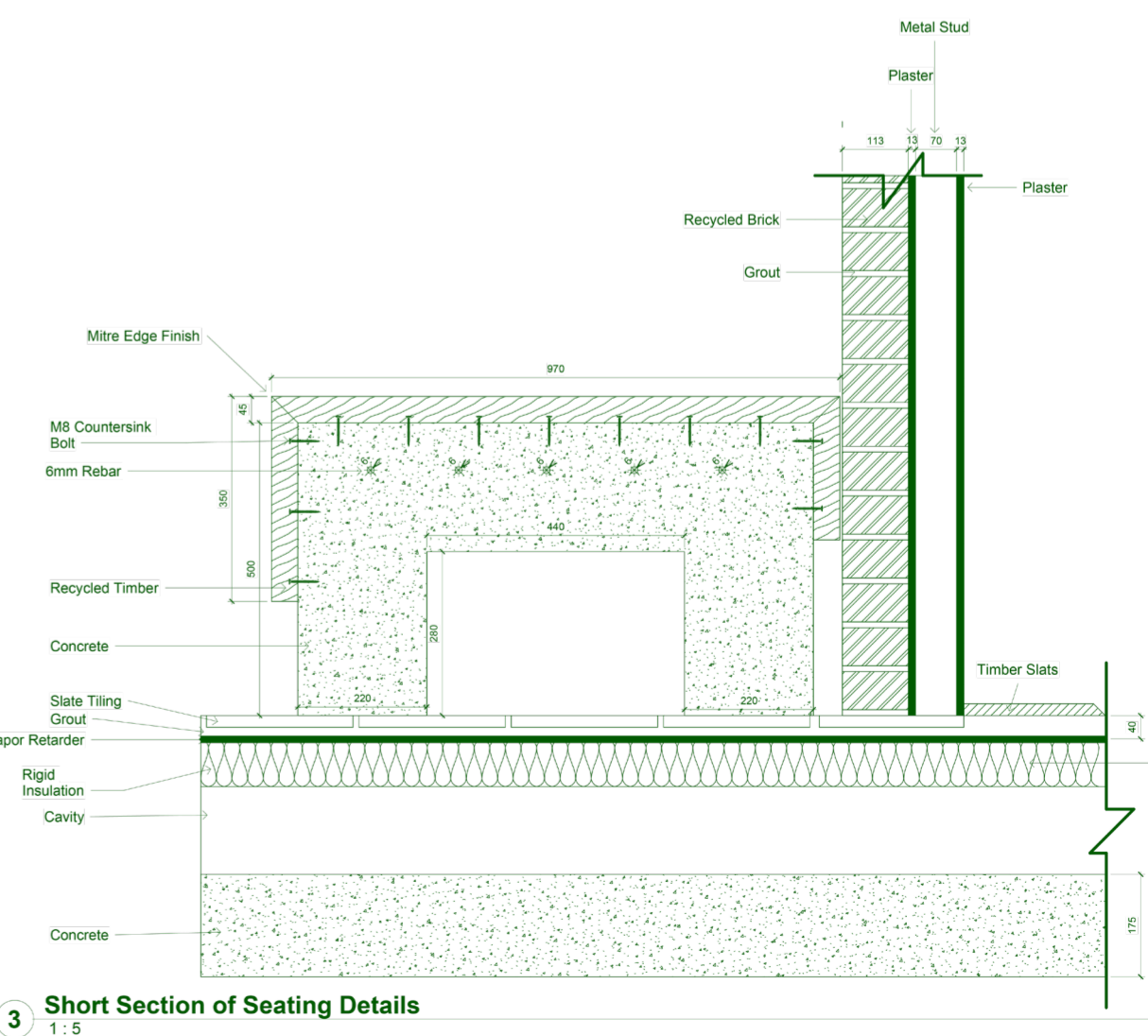
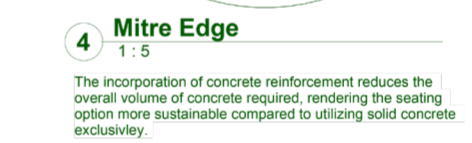
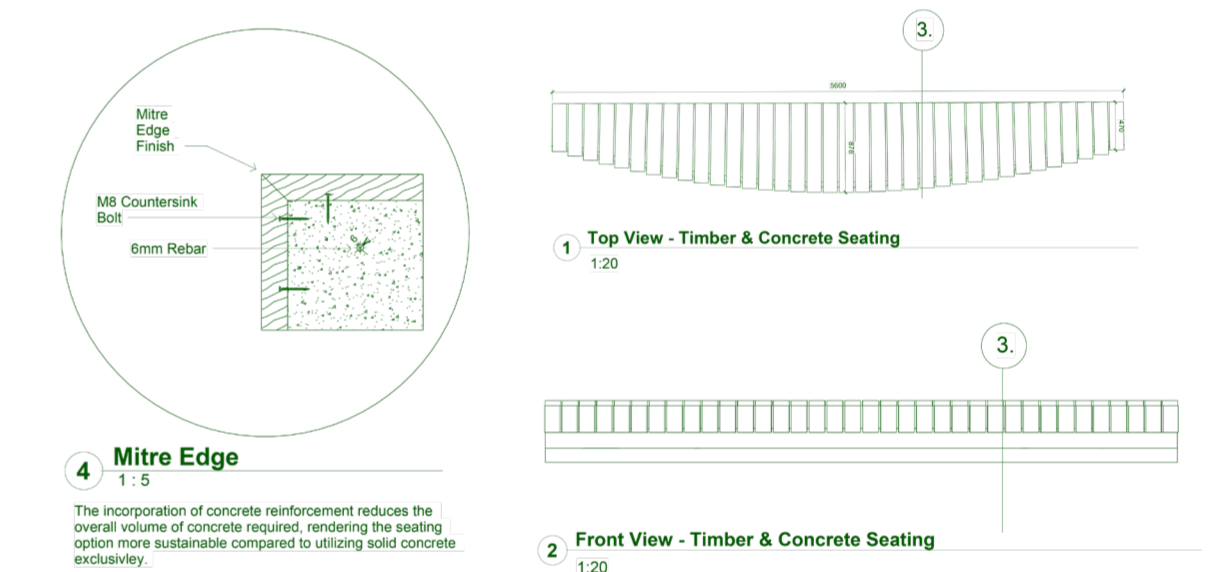
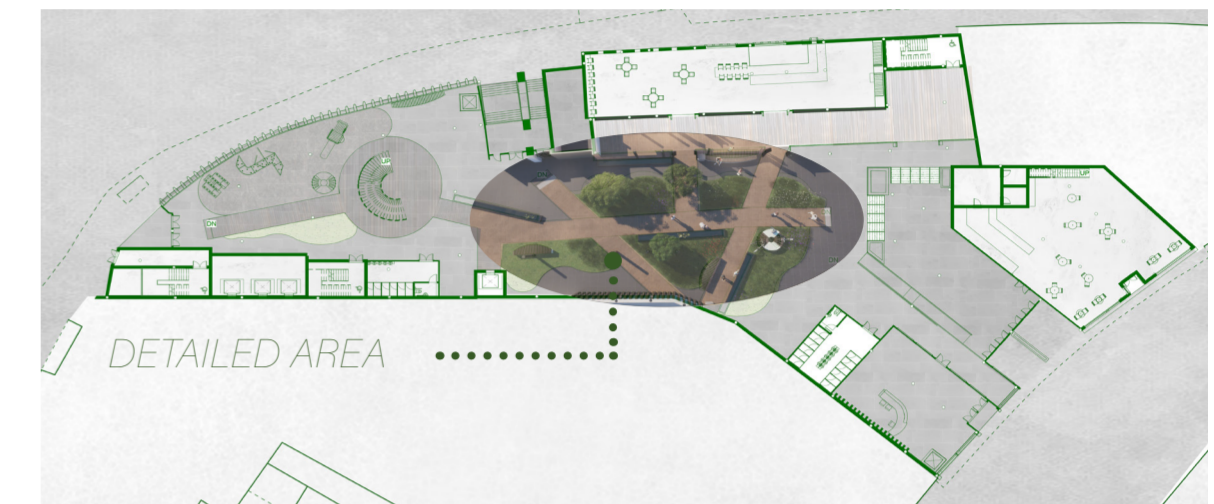


First Floor View Point

The material choice for the interior of the building is intended to replicate the aesthetic of the outside high street, effectively bringing the external environment into the "mall." This approach facilitates the seamless integration of healthcare services with the high street and its daily flow of people.

DETAILED STUDY.

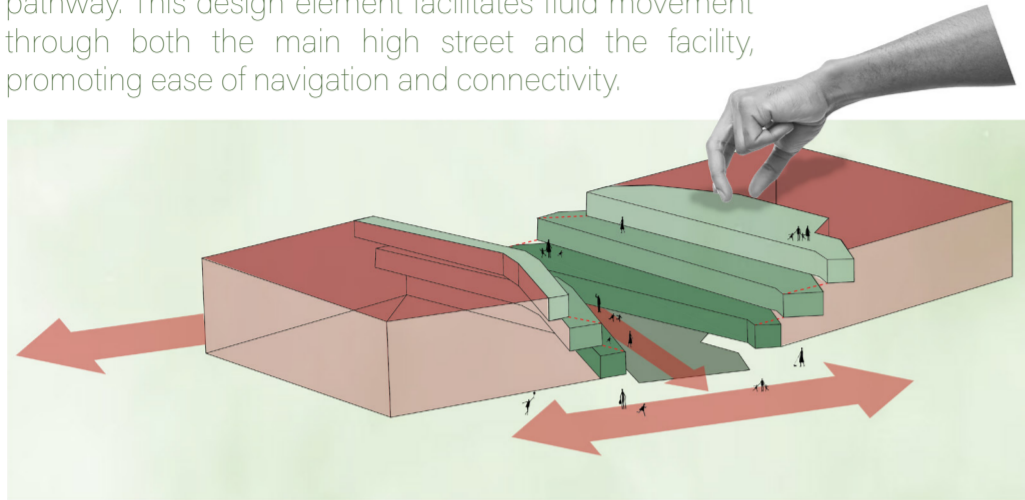
In my detailed study I chose to analyse the relationship between the garden and the broader facility, emphasizing how the garden serves as a cohesive element connecting various parts of the facility. Specifically, my focus centred on detailing elements such as seating arrangements, timber beams, and planters, which play a role in the water harvesting system, thereby integrating sustainability into the design.



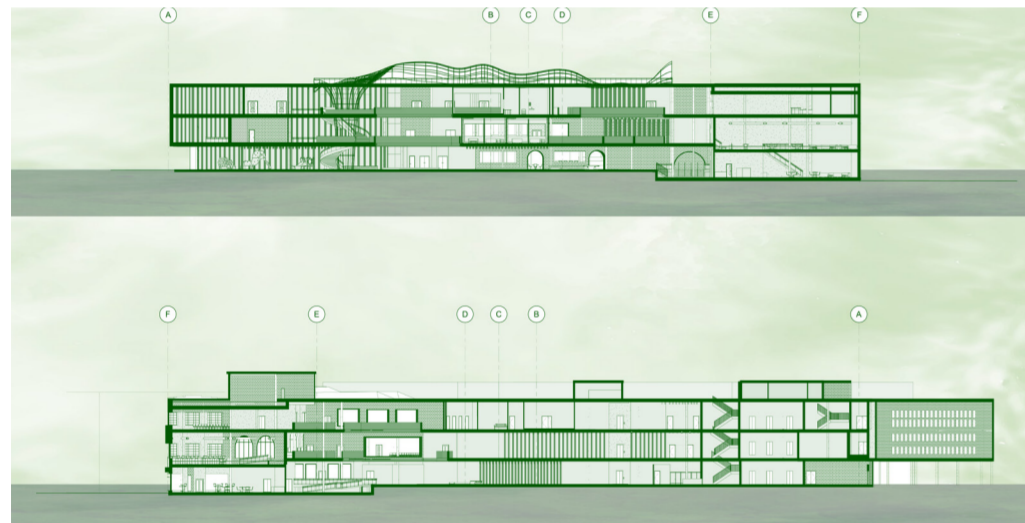
DESIGN COMMUNICATION

LO3

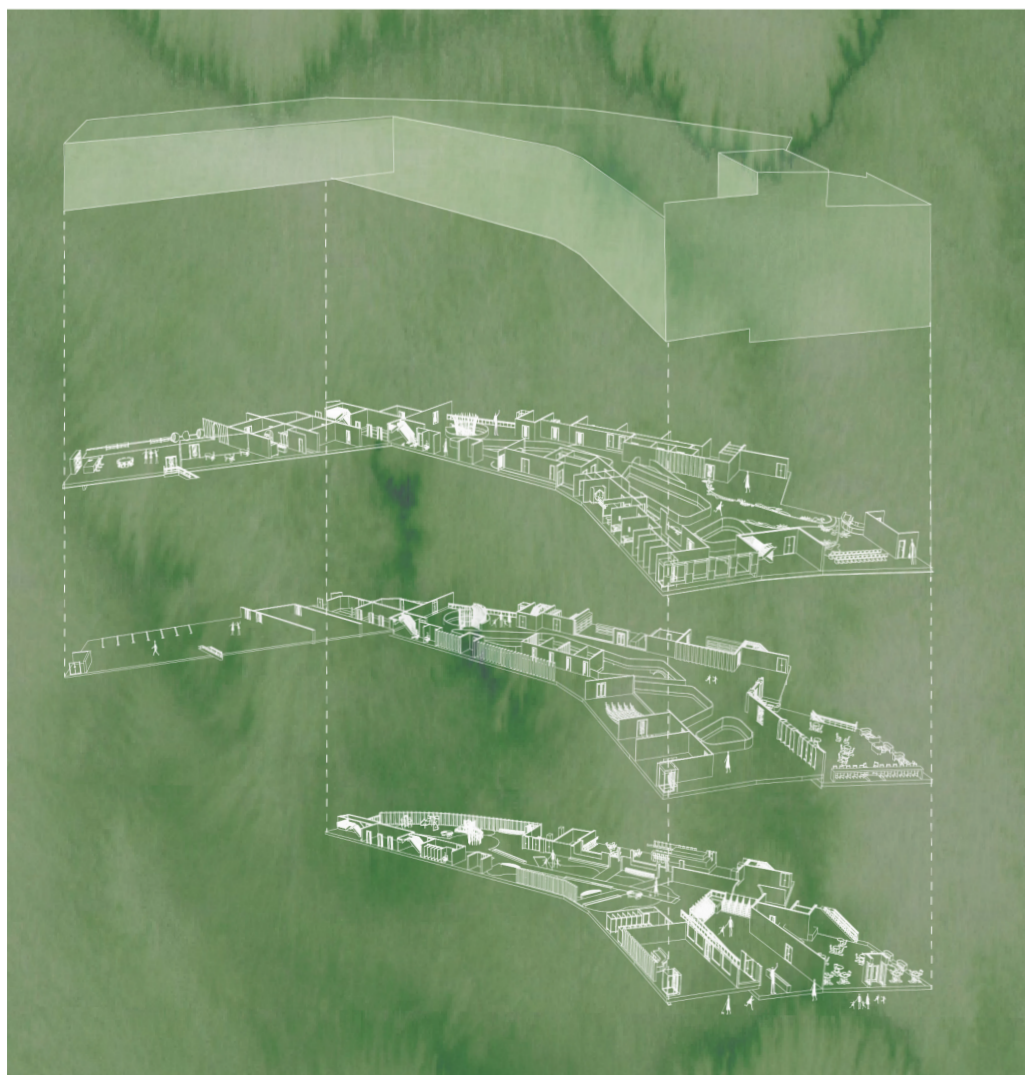
An abstract concept illustrates how the void opens up the entire facility, merging seamlessly to form a unified pathway. This design element facilitates fluid movement through both the main high street and the facility, promoting ease of navigation and connectivity.



CONCEPTUAL HIGH-STREET INTEGRATION

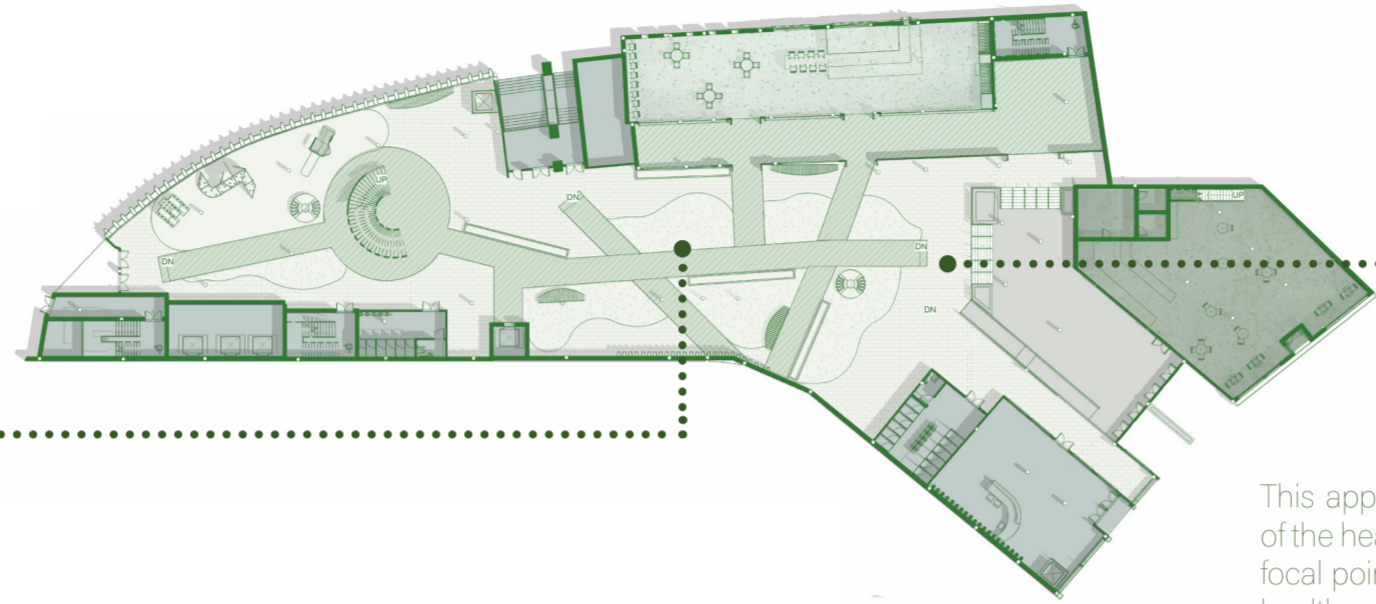


NORTH WEST & SOUTH EAST SECTIONS

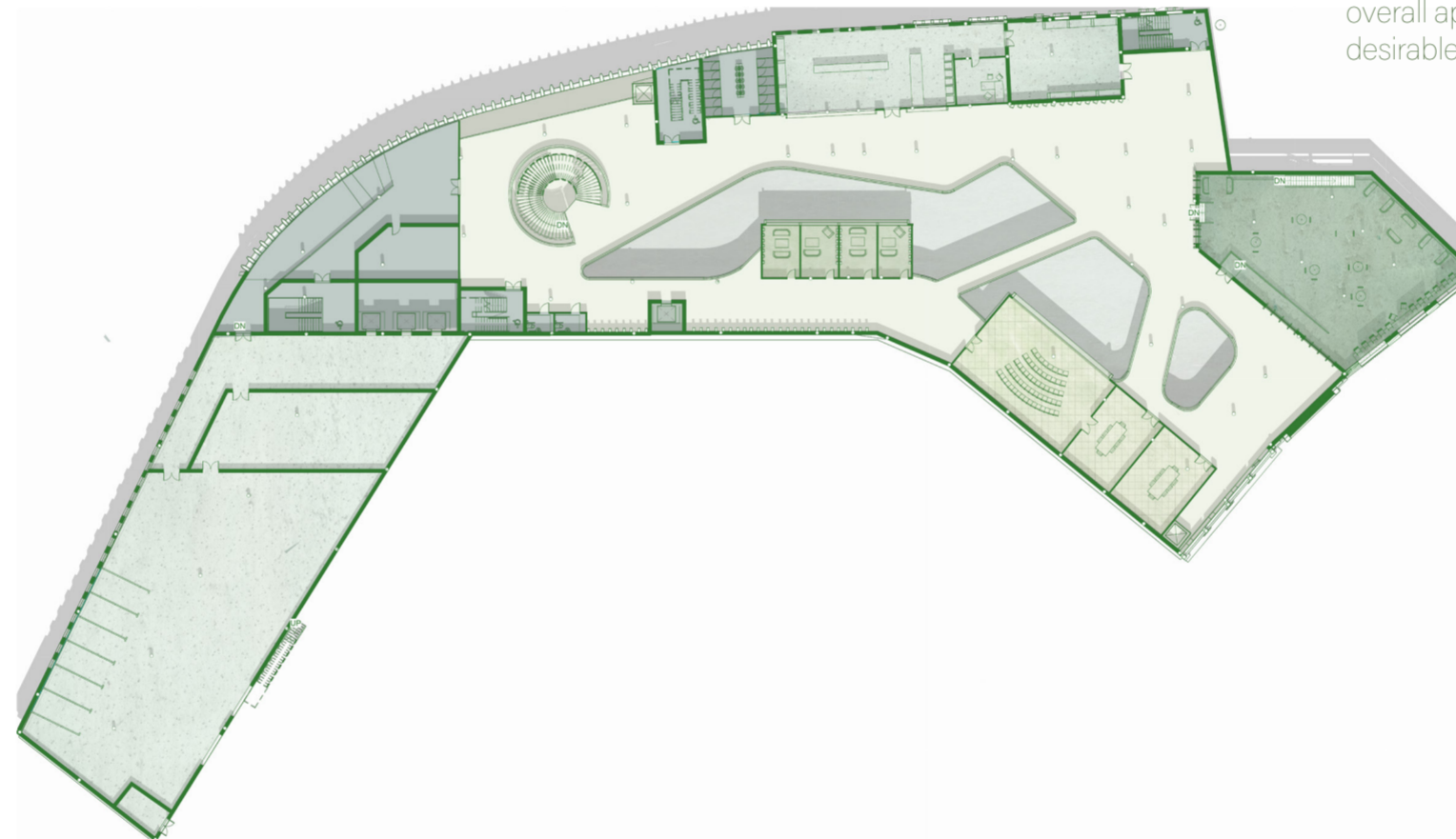


EXPLODED FLOOR PLANS.

The concept of integrating healthcare services with the high street is evident in the open design of this building. Originally a mall, preserving its historical character was a priority during the design process. Serving as a thoroughfare from The Avenue Road to the pedestrianized Commercial Road, the redesign of this mall space ensures that users continue to flow through while also providing opportunities for them to linger and engage.



Lower Ground and 00



Lower First and 01

The centre encompasses amenities including a cafe, co working spaces, a pharmacy, indoor play areas, and indoor gardens, among others. Diagnostics are situated on the top floor, bringing scanning services directly to the high street to enhance patient experience and alleviate congestion in hospital settings.

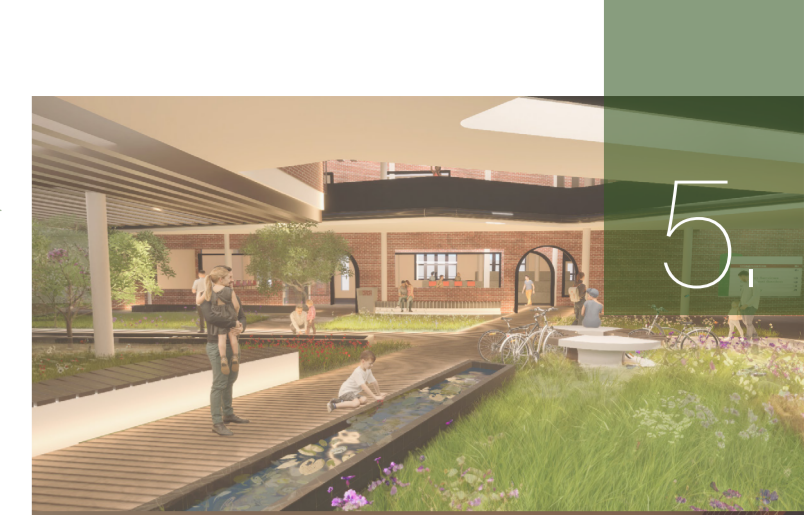


02

This approach not only raises awareness of the health facilities but also establishes a focal point for visitors, subtly incorporating healthcare into their daily lives. Users may visit for reasons unrelated to health but are drawn to the amenities offered. The inclusion of indoor gardens adds a refreshing dimension, enhancing the overall appeal of the space and making it a desirable destination for visitors.

By combining these facilities, the stigma associated with waiting is diminished, resulting in reduced stress levels for patients. The facility fosters a non-clinical atmosphere, revitalizing the image of the NHS.

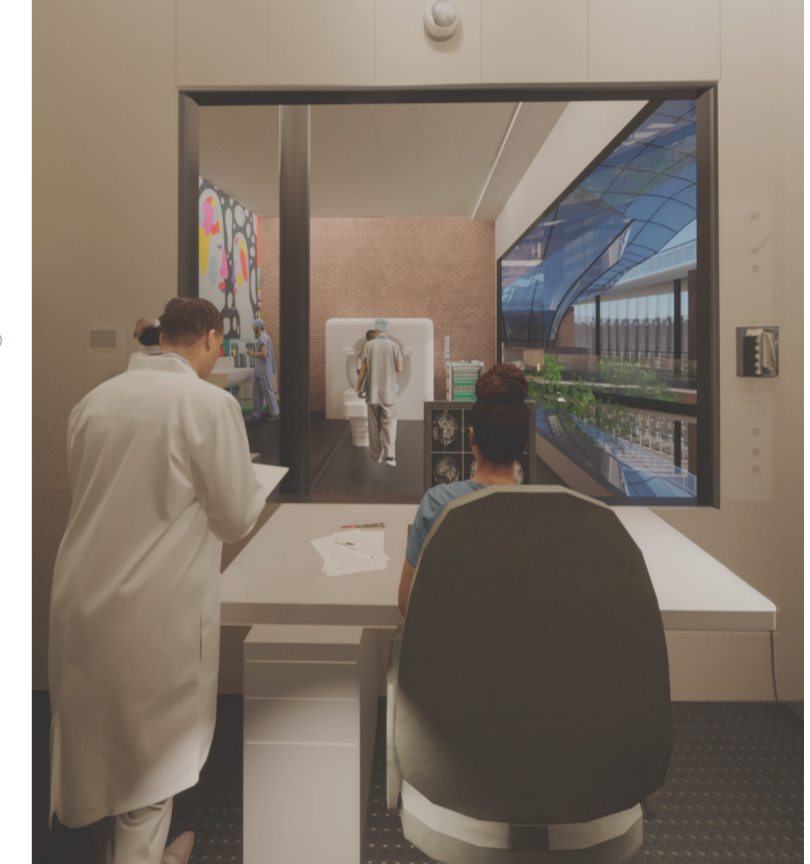
Indoor Garden Space



Co-Working Spaces



MRI Scanning



Indoor Play



Pharmacy



MRI Patient Pods

