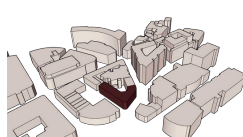




NEW ROOTS EMBASSY

This space was created as a response to the impact of war, social unrest, and global hardship. It's meant to be a place of refuge, somewhere people who have been displaced can feel safe, supported, and start to rebuild their lives in their own way. At the heart of the project is food. Like a community kitchen, it brings people together, helps build connections, and offers comfort and healing. The design is inspired by the shape of a helicopter seed, a symbol of movement, potential, and integration. Just like the seed finds a new place to grow, this space is about starting fresh. It's open, welcoming, and built to support new beginnings.



Located in the heart of Bristol's city centre, the New Roots Embassy breathes new life into the historic Old Fire Station

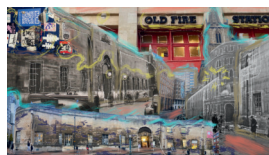
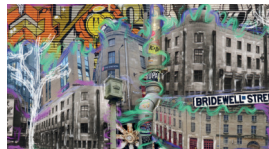
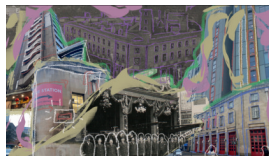


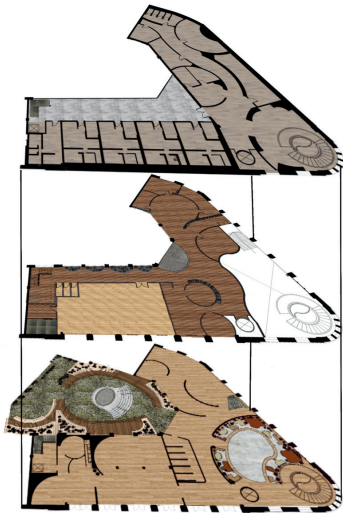
Helicopter seed : Metaphoric symbol

Can symbolise something that is meant to be guided or carried by external forces much like the seed is carried by the wind. It may evoke ideas of growth, potential, or the unpredictable journey of life.

My design brief focuses on creating spaces for refugees migrants and asylum seekers. This project aims to provide not just shelter but a sense of home, fostering a strong sense of community, neighborhood, and belonging. By designing a space where relationships can flourish, I hope to support individuals who have been displaced from their homes due to external forces such as war and conflict. This design aspires to offer more than a physical environment—it seeks to be a sanctuary where they can rediscover their identity, rebuild their lives, and reconnect with a sense of purpose and belonging in society.

Site Response





BUILDING CRITERIA

MOVEMENT

The second floor is dedicated to movement, support, and well-being, serving as a vital welfare zone for refugees. This space offers access to financial assistance, wellness resources, and a digital hub where individuals can connect with their families back home. Recognizing the challenges and emotional toll of migration, this floor provides essential support to help refugees navigate their new lives. Additionally, it includes housing accommodations for both staff members and refugees, creating a safe and supportive environment for those in transition.



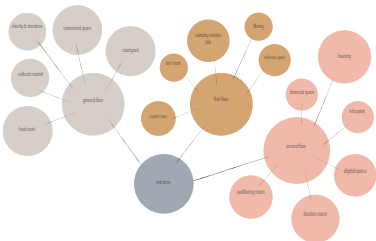
INTEGRATION

The first floor acts as a welcoming gateway to integration, where refugees begin to build meaningful connections with the local community. It features a multilingual library that not only offers educational resources but also hosts language exchange sessions, helping individuals improve their communication skills through interaction. A vibrant culinary lab serves as a cultural bridge, where refugees and locals come together to share, learn, and cook diverse cuisines. Each week, a community member is invited to present a signature dish, turning the space into a storytelling platform through food. A featured "Recipe of the Week/Month" invites collaborative cooking sessions that support refugee-focused charities and local community events. This floor fosters trust, cultural exchange, and a shared sense of belonging.



POTENTIAL

The ground floor serves as a space where refugees can showcase their potential, applying the skills they've gained through educational programs at the library and hands-on experience in the culinary lab. Here, they have the opportunity to present their dishes to the public, demonstrating their growth, confidence, and resilience. This space symbolizes a fresh start, allowing them to share a piece of their heritage while embracing new beginnings after being displaced from their original homes.



MOVEMENT

2ND FLOOR

1. DOCTORS ROOM
2. WELLBEING ROOM
3. FINANCIAL SPACE
4. DIGITAL ROOM
5. INFO POINT
6. HOUSING



INTEGRATION

FIRST FLOOR



7. STORYTELLING ROOM
8. EDUCATION ROOM
9. ENGLISH CLASS
10. LIBRARY
11. ART ROOM
12. CULINARY CLASS
13. REFLECTION SPACES

POTENTIAL

GROUND FLOOR

14. FOOD COURT
15. COMMUNAL SPACE
16. CULTURAL MARKET
17. CHARITY & DONATION MARKET
18. COURTYARD
19. ENTRANCE



01, LIBRARY



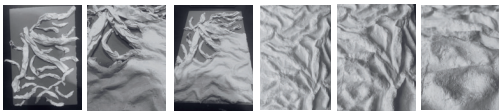
01, CULINARY SESSION LAB



00, MAIN COMMON AREA



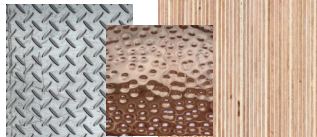
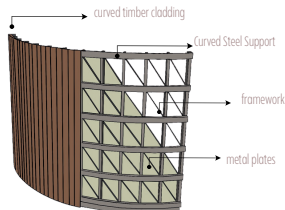
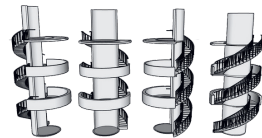
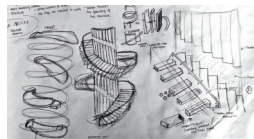
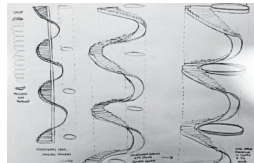
This ceiling installation is made using recycled paper, card, and Modroc, combining sustainable materials with expressive form. Designed to span across the entire ceiling of the building, the feature adds a dynamic layer to the spatial experience. As people move through the space, the piece is visible not just above, but within their peripheral vision—creating a sense of continuous, flowing motion. Its layered, organic form is intended to evoke movement and transformation, reinforcing key themes within the project such as fluidity, transition, and spatial awareness. The installation becomes a subtle yet immersive element that shifts with the viewer's position, making the ceiling an active and engaging part of the environment.





DETAIL

The staircase, which serves as the main feature of the space located in the common area, is inspired by the elegant form and movement of a helicopter seed



00, CULTURAL MARKET



00, FOOD COURT



COURTYARD - OUTDOOR EVENTS



LONG SECTION @ 1:400



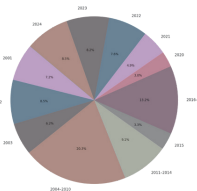
LONG SECTION @ 1:400



DEMOGRAPHIC

DISTRIBUTION OF UK ASYLUM APPLICATIONS BY PERIOD (2001-2024)

This pie chart is showing the percentage of each year how many displaced people come into the UK.



Refugee Resettlement: Around 7,800 people were resettled through official UK programs in 2024, mostly from Afghanistan.

Safe Routes: The UK granted 79,000 humanitarian visas in 2024 for those fleeing crises in places like Ukraine and Hong Kong.

Irregular Arrivals: Over 44,000 people entered the UK irregularly in 2024, with small boat crossings accounting for the majority.

HOUSING FLOOR PLAN

KEY FEATURES:

1. entrance
2. living space
3. kitchen
4. bedroom 1
5. bedroom 2
6. bathroom
7. storage



HOUSING DESIGN



This housing initiative is designed to support individuals and families who are either employed within the community or in the process of relocating and establishing stability. Residents will be offered short-term accommodation for a maximum of two years, during which they will receive the support needed to regain independence and transition into permanent housing.

The development will feature a variety of living spaces tailored to meet diverse needs, including units for individuals, couples, and families. These accommodations will be thoughtfully distributed across the second, and third floors to foster a balanced and inclusive living environment.