

Luxury for Everyone: an economy of spatial exchange

Nikol Yeremieva

Project Synopsis

The Palace Cinema is transformed into a luxury night-time bar and private day-time nursery with the aim that they will be accessible to the general community, allowing everyone to experience luxury and true comfort. Creating enjoyable spaces for everyone should be a design approach we all strive for. The project allows the community to blend with professionals, increasing wealth in Kentish Town and creating better opportunities for young adults and children. The bar promotes socialising by mixing class groups, achievable through its in-house winery. Meanwhile, the nursery will welcome vulnerable children from single parent families to support learning. The project creates a beautiful cycle facilitating for wealth to be drawn into Kentish Town and simultaneously, helping the growth and progression of the community.

Why is this project relevant to the Spatial Experience & Interior Response Award

This project redefines adaptive reuse by choreographing a rhythmic, 24-hour spatial cycle within the historic Palace Cinema. Its core concept synthesizes two divergent typologies - a luxury nighttime bar and a daytime nursery - into a single, intriguing spatial volume. By nesting a timber and stone intervention delicately within the existing masonry shell, the design maximizes spatial utility while preserving local heritage. The layout seamlessly transforms from a sensory, nurturing educational environment into an atmospheric, inclusive social hub in the evening. This dual inhabitation directly addresses local scarcity, elevating the lived experience of Kentish Town's community by proving that architectural luxury can drive social equity.

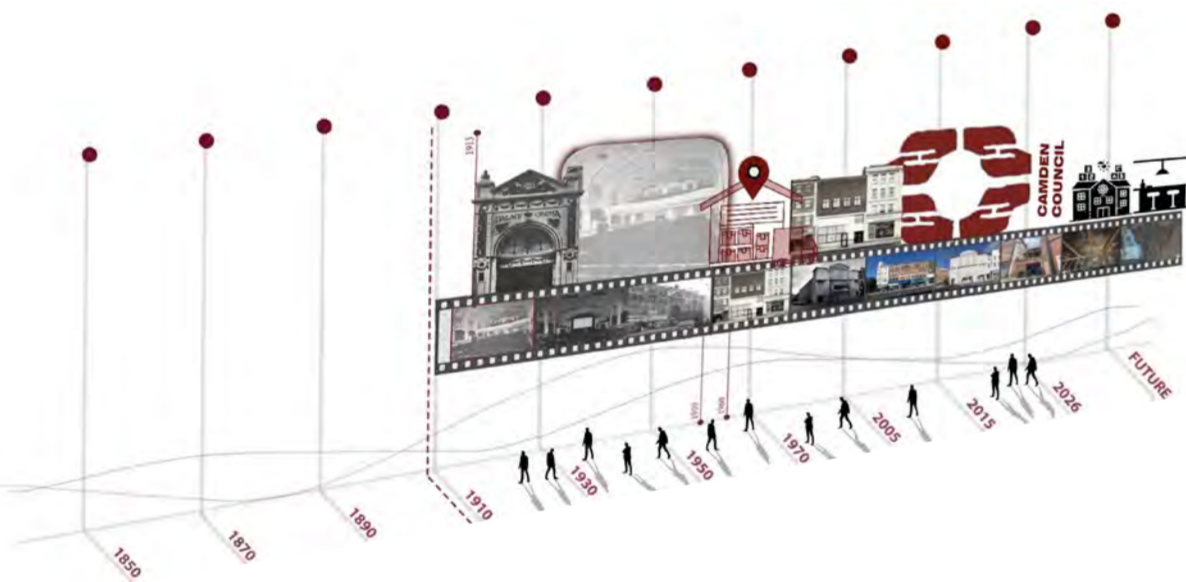


Luxury for Everyone: an economy of spatial exchange

Nikol Yeremieva



To preserve the building's rich history, the project retains its existing shell and restores the exciting interior. While council insulation requirements pose a challenge, the design prioritizes innovative, sustainable solutions that reuse onsite materials without compromising the historic structure.



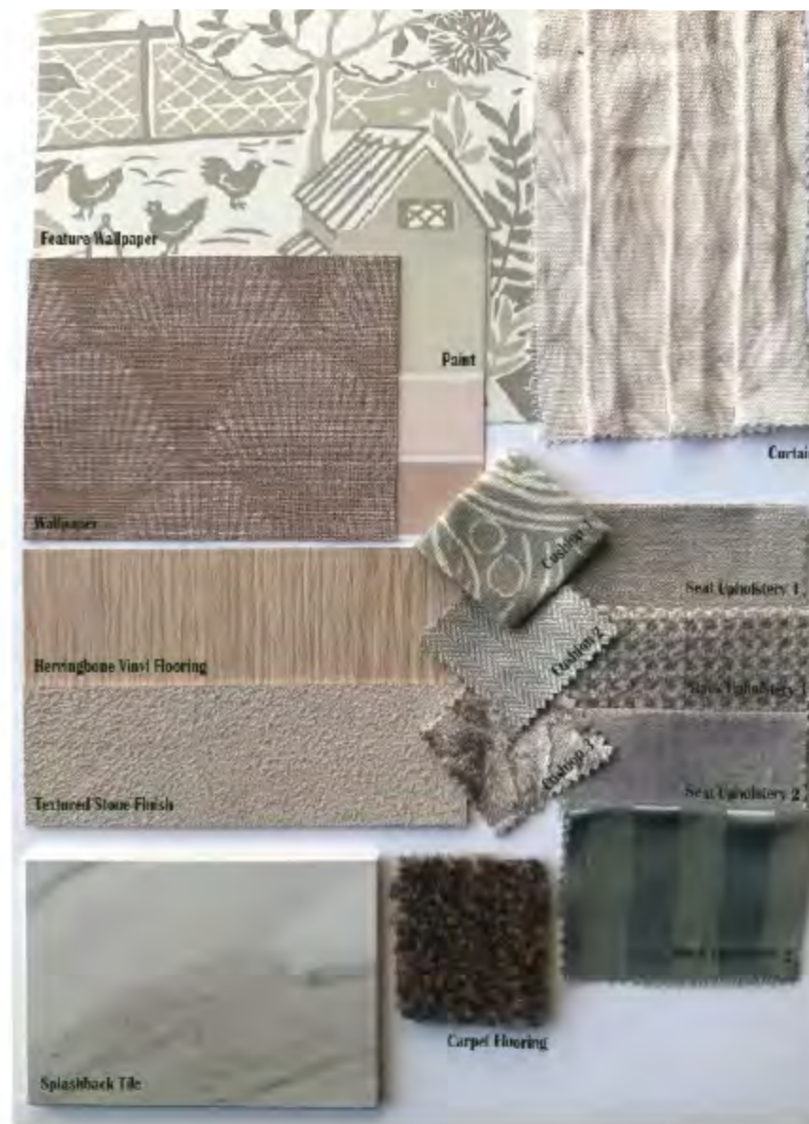
This timeline links the evolution of the Palace Cinema with Kentish Town's history, mapping key events that shaped the building's adaptation. It highlights the community's enduring connection to the arts and creative development over the years.



To map the building's transition from nursery to bar, this collage reimagines a day in the life of its users. Guided by the sun, the narrative design captures key temporal moments, ensuring the shifting space fosters meaningful human connections throughout the day.



When selecting the materials for the proposed design, the existing materials are extremely important especially when proposing a retrofit. To best understand this, clay imprints were made of some of the key materiality, analysing the textures that they have, the way they appear in light and the shadows they create. This all together has a significant impact on the building atmosphere. The materials above are very textures and these qualities are retained, while juxtaposing with a more contemporary palette.



The Hazel Nursery



Gold Essence Bar



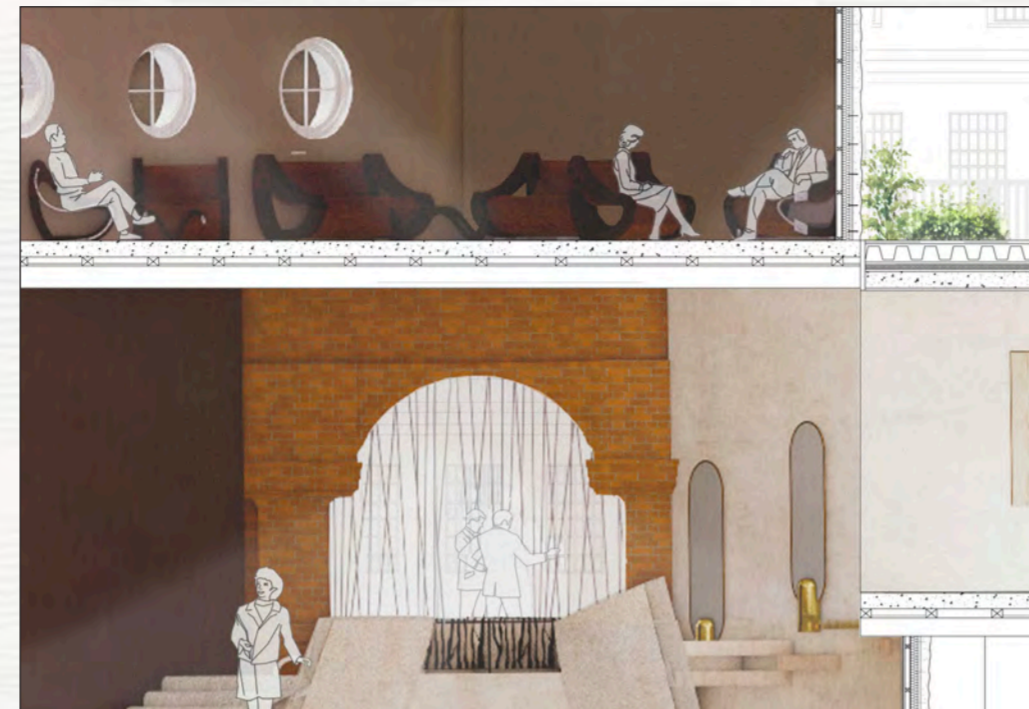
Bronze Deluxe Lounge

Luxury for Everyone: an economy of spatial exchange

Nikol Yermieva



The rooftop collects water into deep planters that serve to separate areas for seating and booths for evening socialising.



Existing materials and textures are carefully balanced with contemporary luxury from the walls to the furniture.



This detail drawing demonstrated how the proposed structure connects to the existing shell of The Palace Cinema whilst visually representing the activity of the wine bar within the space.



The design of the bar is bespoke and has a great juxtaposition between the original Palace Cinema interior elevation and the contrasting angular interior proposed. The bar incorporates lighting on the outside, footrails and storage on the inside for functionality.

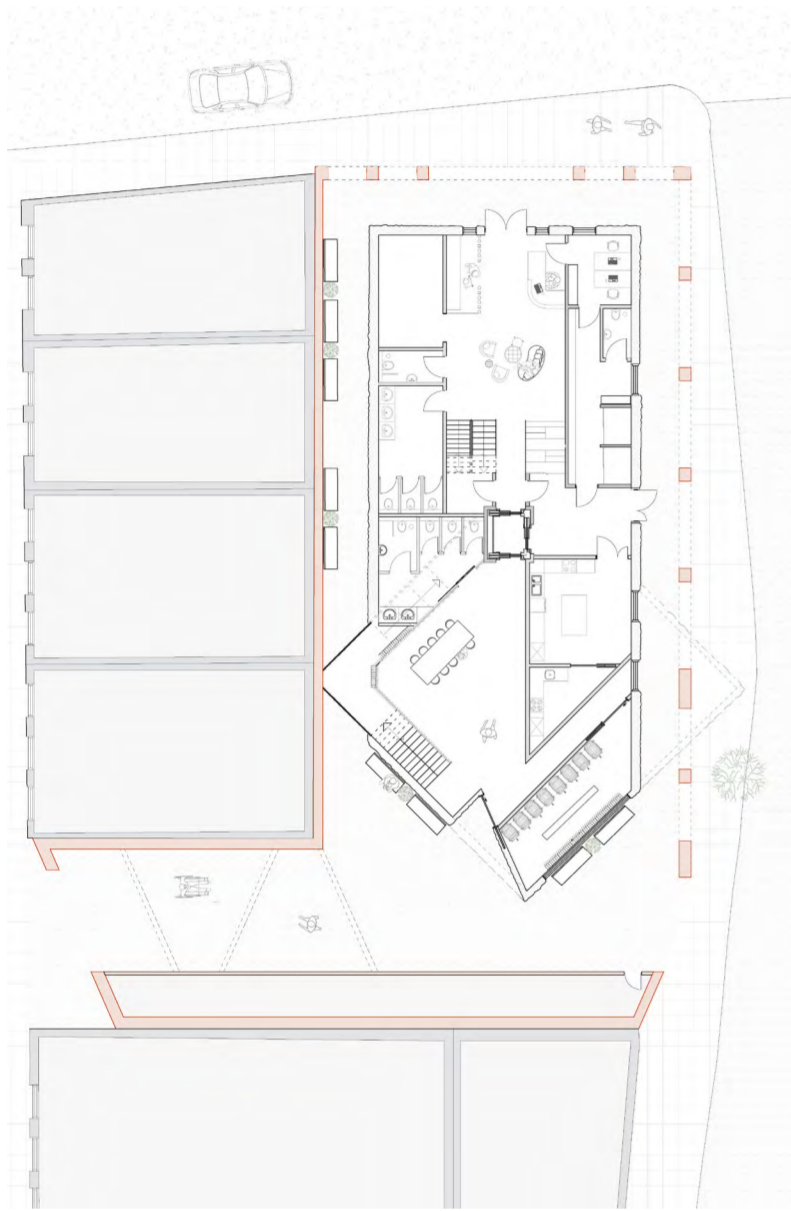
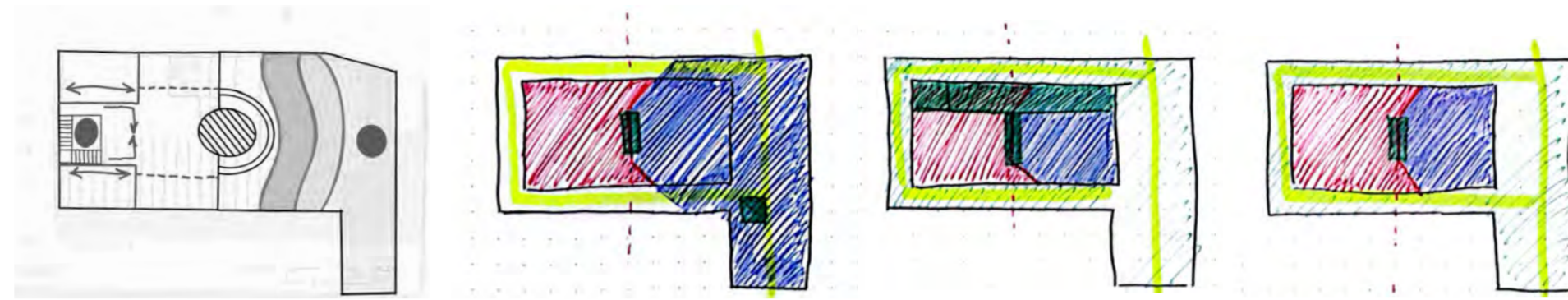
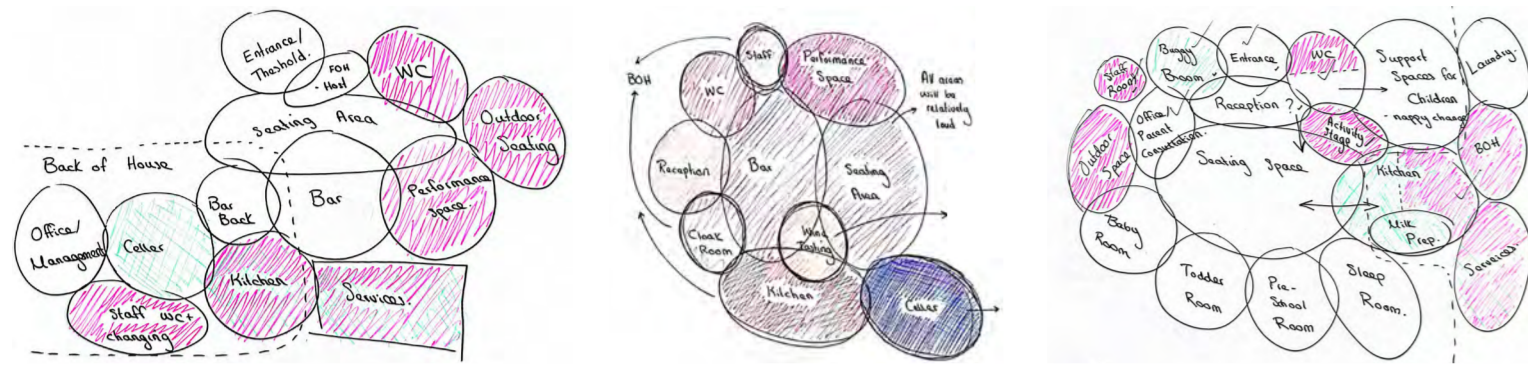


Inhabited Section

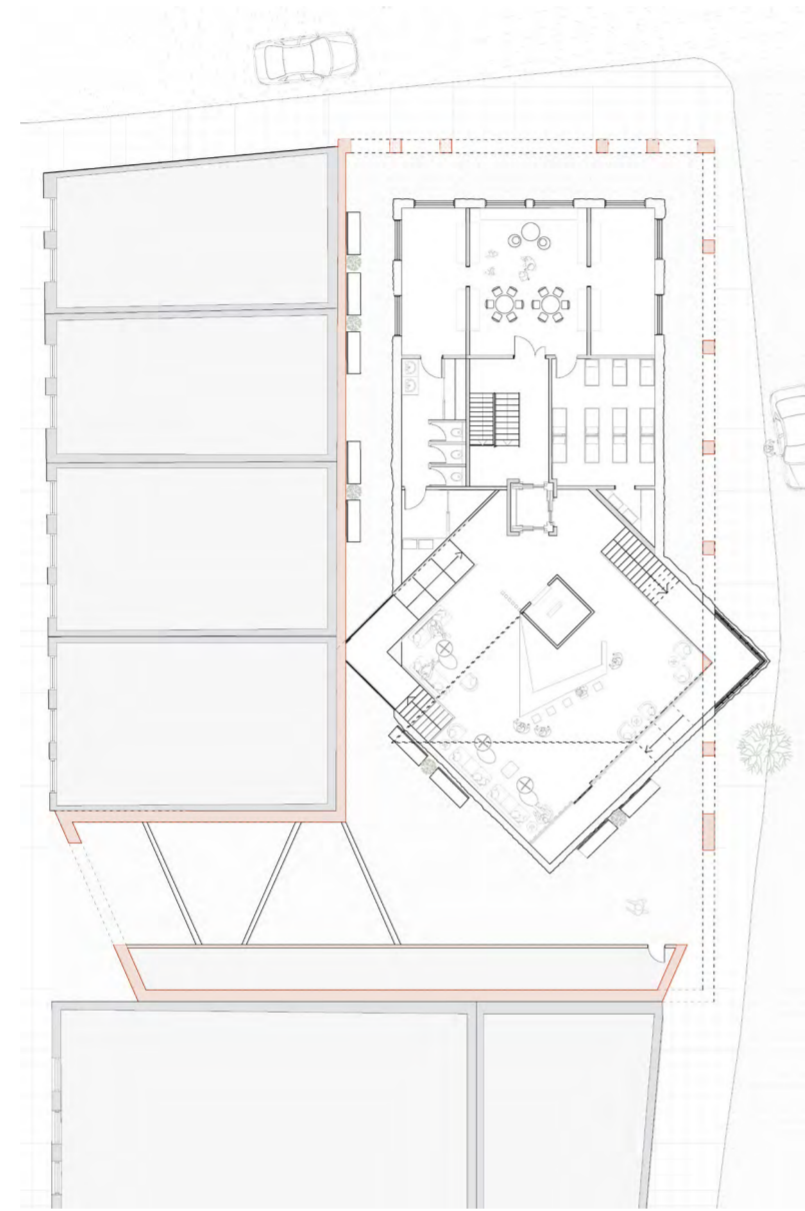
Presenting the two functions of the building, this sectional perspective shows the day-time function of the building with an overlay of the night-time user activity. It represents the user dynamic and demonstrates which areas are used and when.

Luxury for Everyone: an economy of spatial exchange

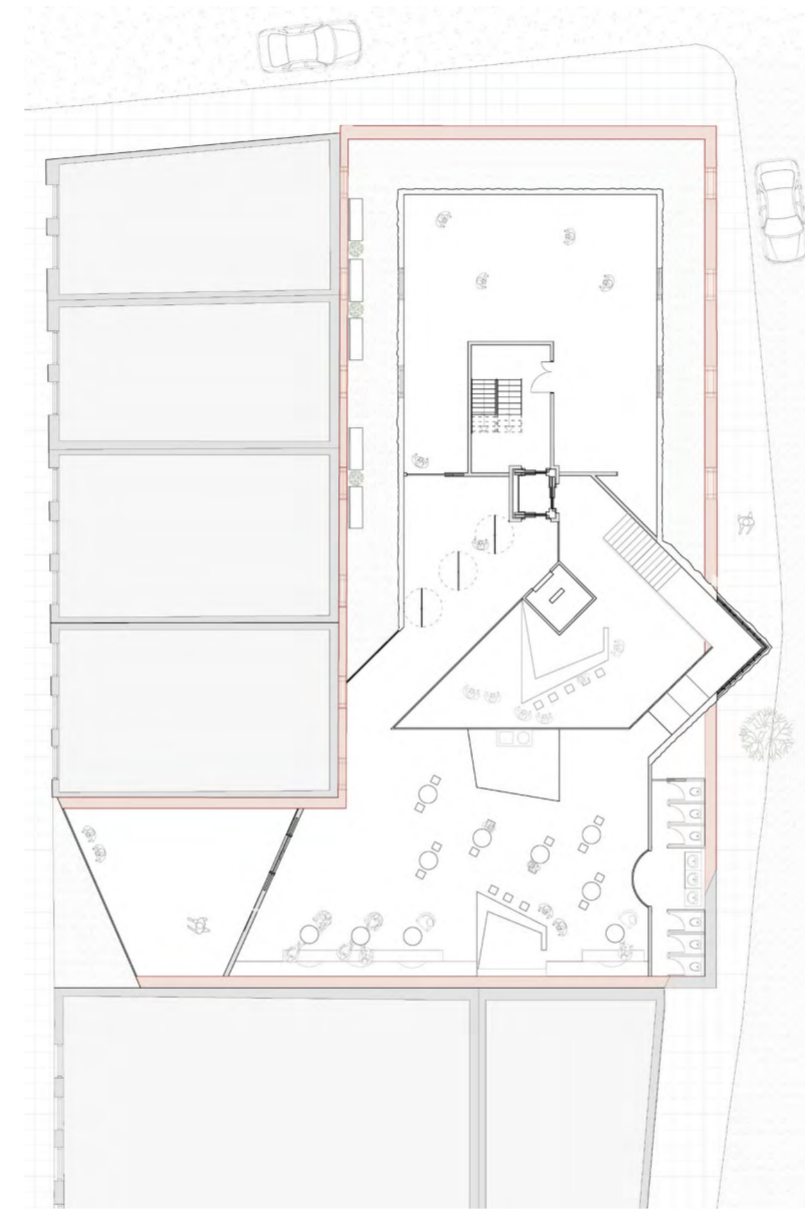
Nikol Yeremieva



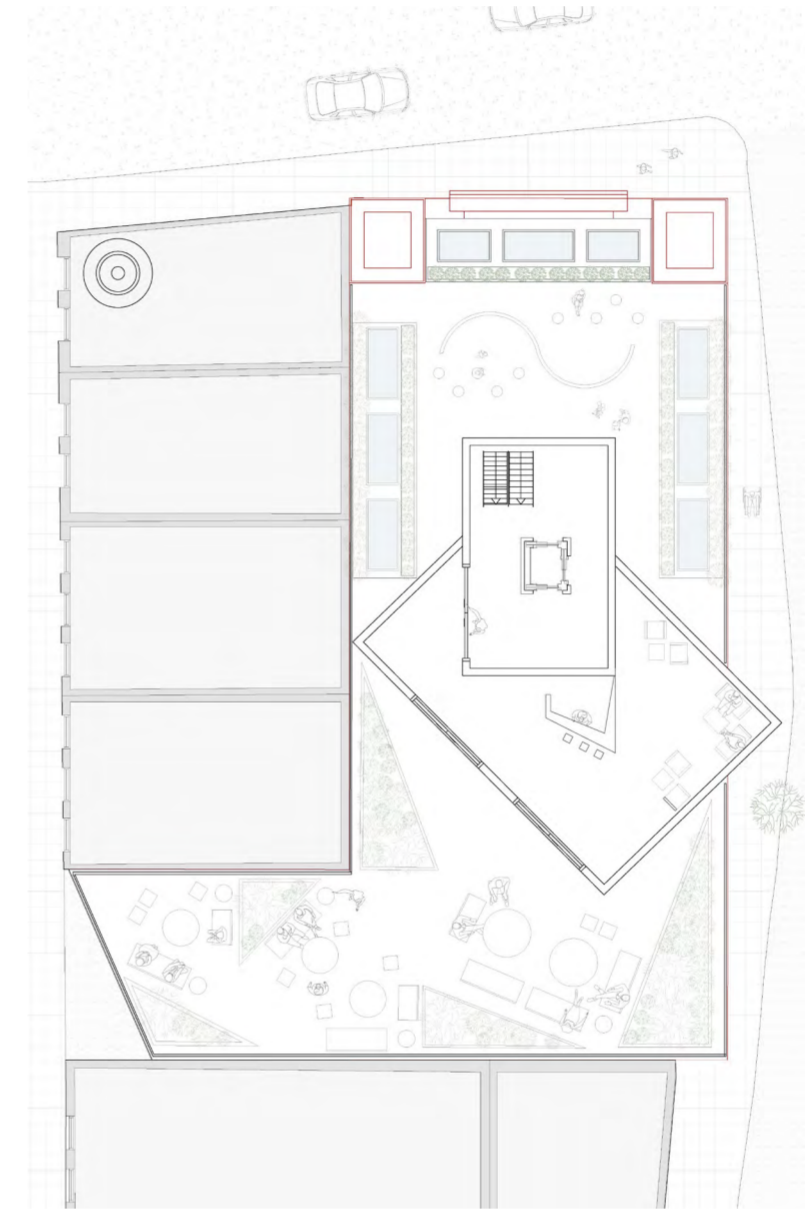
Ground floor plan



First floor plan



Second floor plan



Roof plan



- Nursery
- Nightclub
- Shared



Long section



Short section

Luxury for Everyone: an economy of spatial exchange

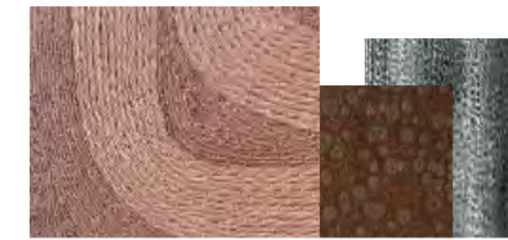
Nikol Yeremieva



Due to the lack of greenery on the site, the nursery includes a rooftop garden and play area supporting outdoor activities and health. The space is encapsulated with planting for privacy and better air quality.



Composition showing the materiality and activity of the nursery play area. This space communicated the bright, happy space where children are welcomed and taken care of.



Representing the modern interpretation of The Palace Cinema balcony and demonstrating the juxtaposition between proposed and retained structure in the Gold Essence and Bronze Deluxe suites.



The ground floor of the bar welcomes guests for wine tasting and tour of the cellar which is open earlier than the upper floor lounges to improve the business and promote the wine to more customers.

