

HAGGERSTON STUDIOS

BRIEF + SITE

Haggerston Studios is a co-working space for artists and designers in Haggerston, Hackney.

The interior was inspired by the heritage and materiality of the building. Throughout the spaces there are subtle call-backs to the buildings past use as a community swimming baths. Biophilia has a part to play in the scheme, in the form of greenery/flora and rich haptic/textural finishes and materials.

There is three types of working environment; shared/approach, focused and conversational. Each area is differentiated and caters to different working modes and user needs. Dynamic studio spaces have the capacity to adapt and change to suit the current user is important.

Concept

The basis for the design of Haggerston studios is spawned from four sources; The post-pandemic urge to explore nature, the adaptive reuse of the community swimming baths, the narrative of the grade 2 listed building and its surroundings and finally the use of the weather vane representing the Golden Hind which was a ship that Sir Francis Drake sailed around the world in the 1570s. As an emblem.

Location

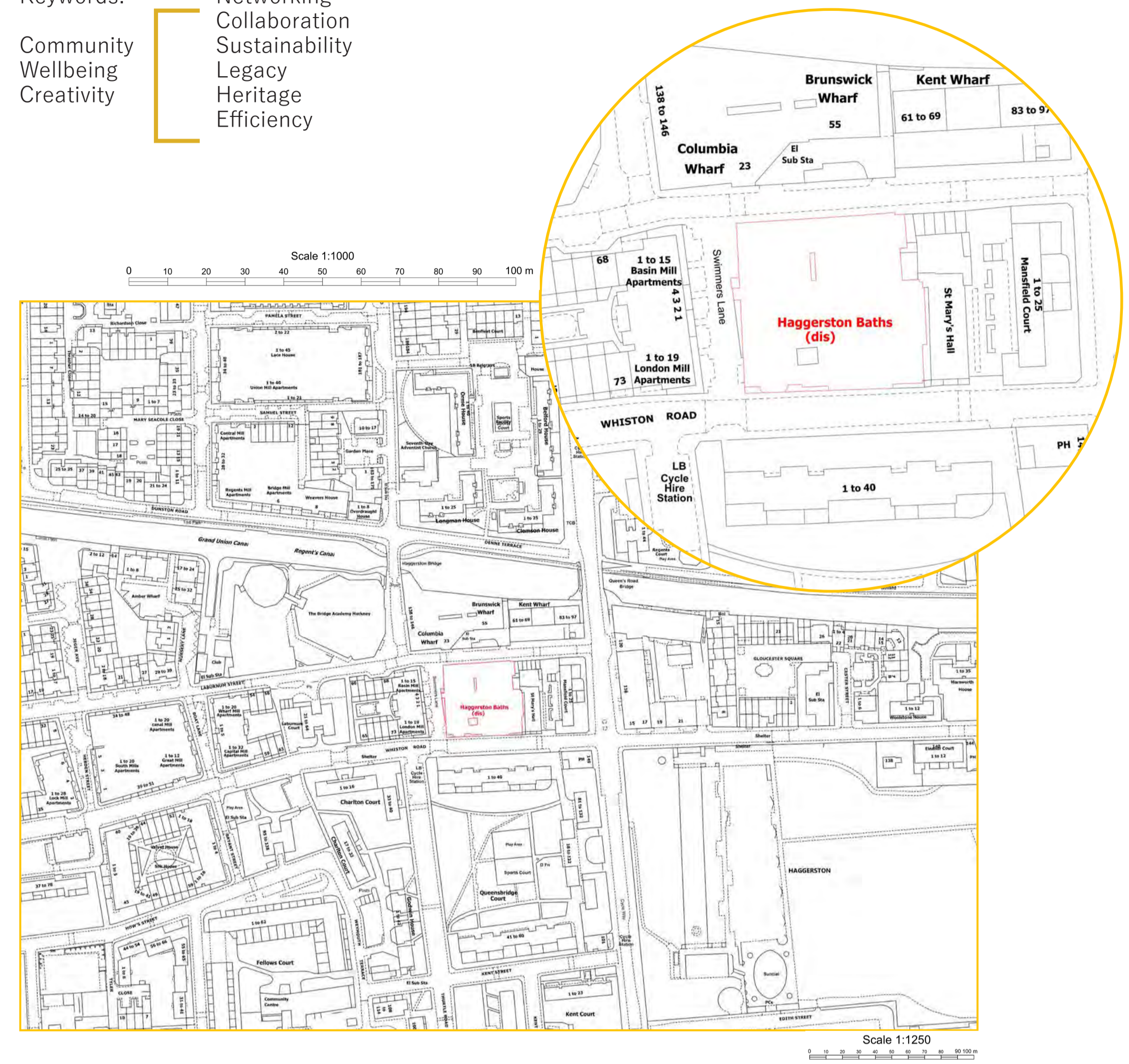
Haggerston Pool, 39 Laburnum St, London E2 8BZ
Haggerston Studios is located in the borough of Hackney and close to creative hotspots such as Shoreditch and Clerkenwell. A 30 min walk takes you straight to Hackney High street and four overground stations are also within walking distance.

User

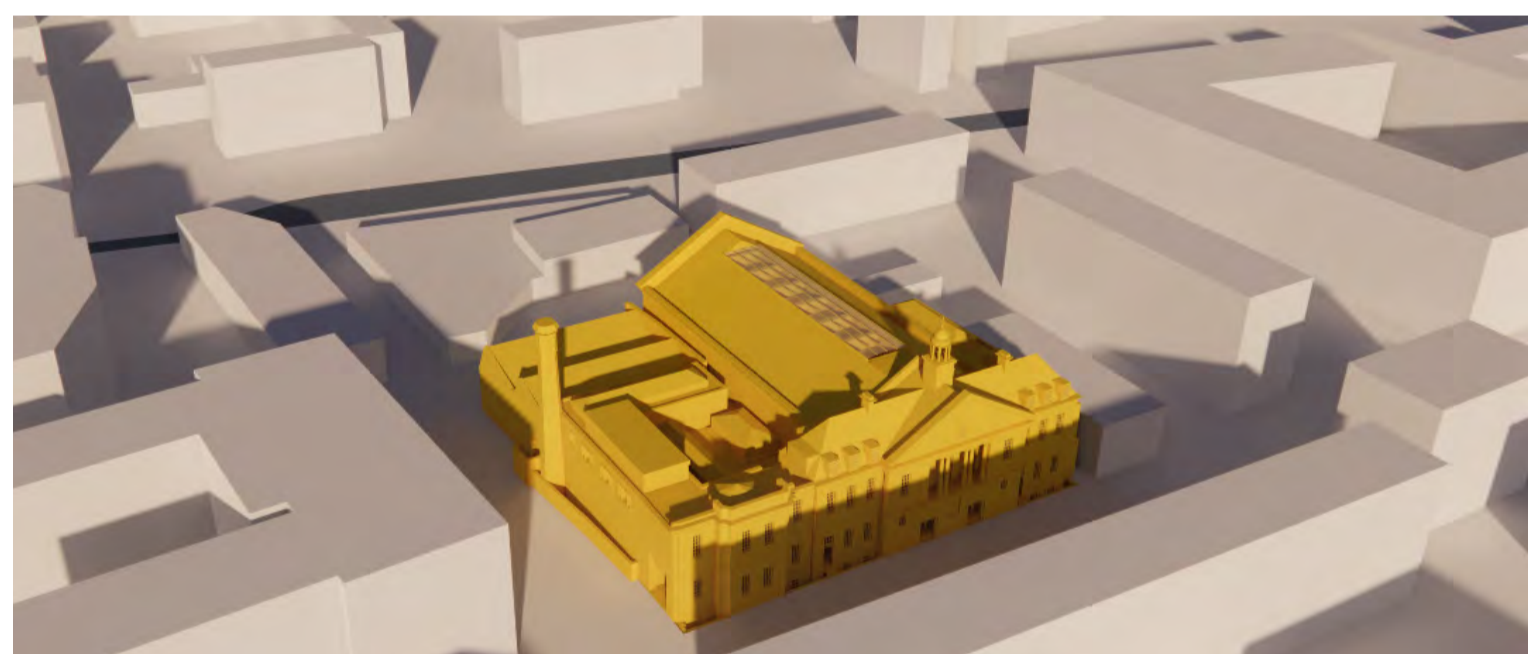
Haggerston Studios is targeted at artists and designers between the age of 20-30 years. The users are either freelance creatives looking for a space to work or remote/hybrid creatives from an established company looking for a physical space to work from outside of their own, on a temporary or semi-permanent basis.

Keywords:
Community Wellbeing Creativity

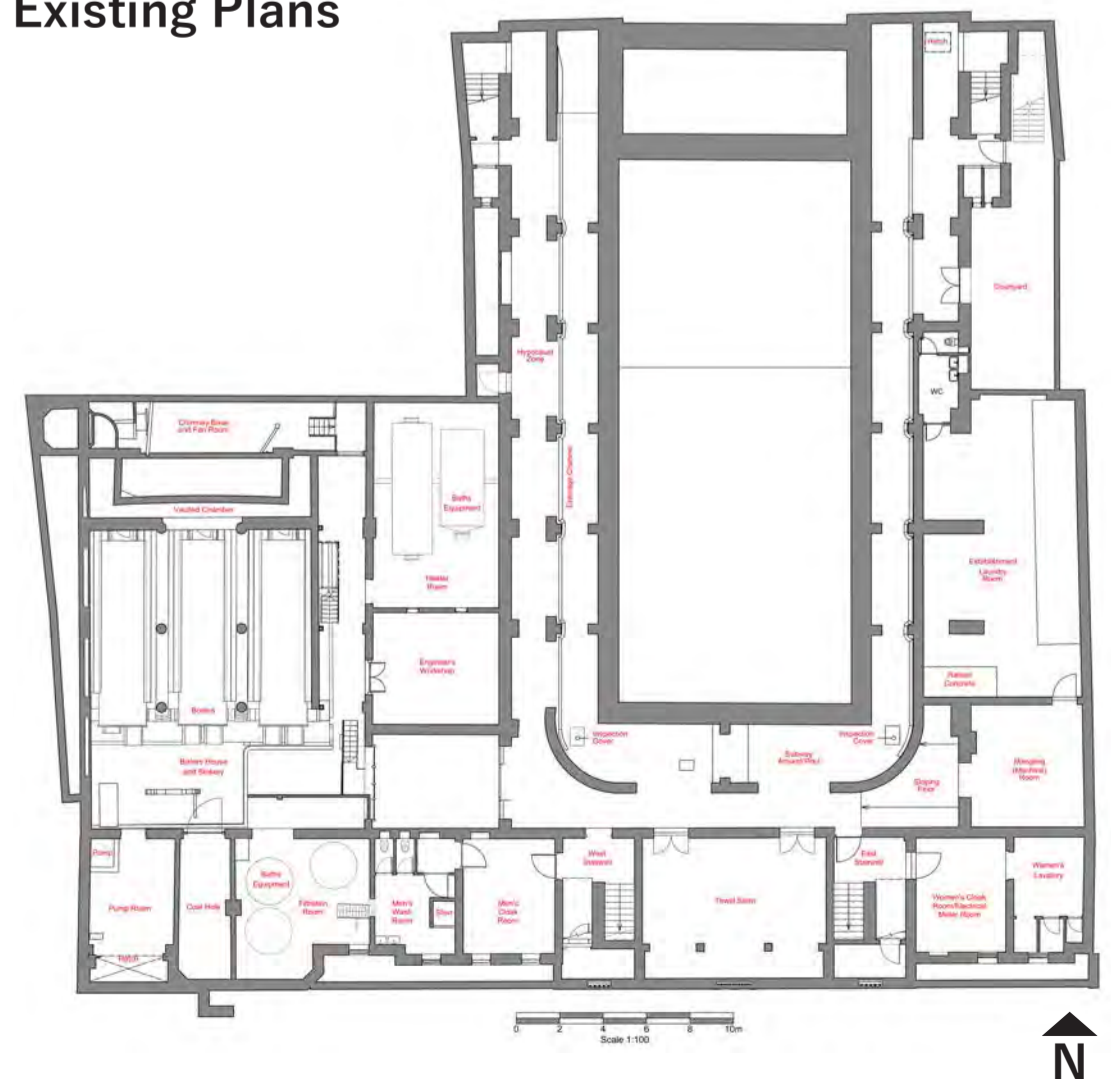
Networking
Collaboration
Sustainability
Legacy
Heritage
Efficiency



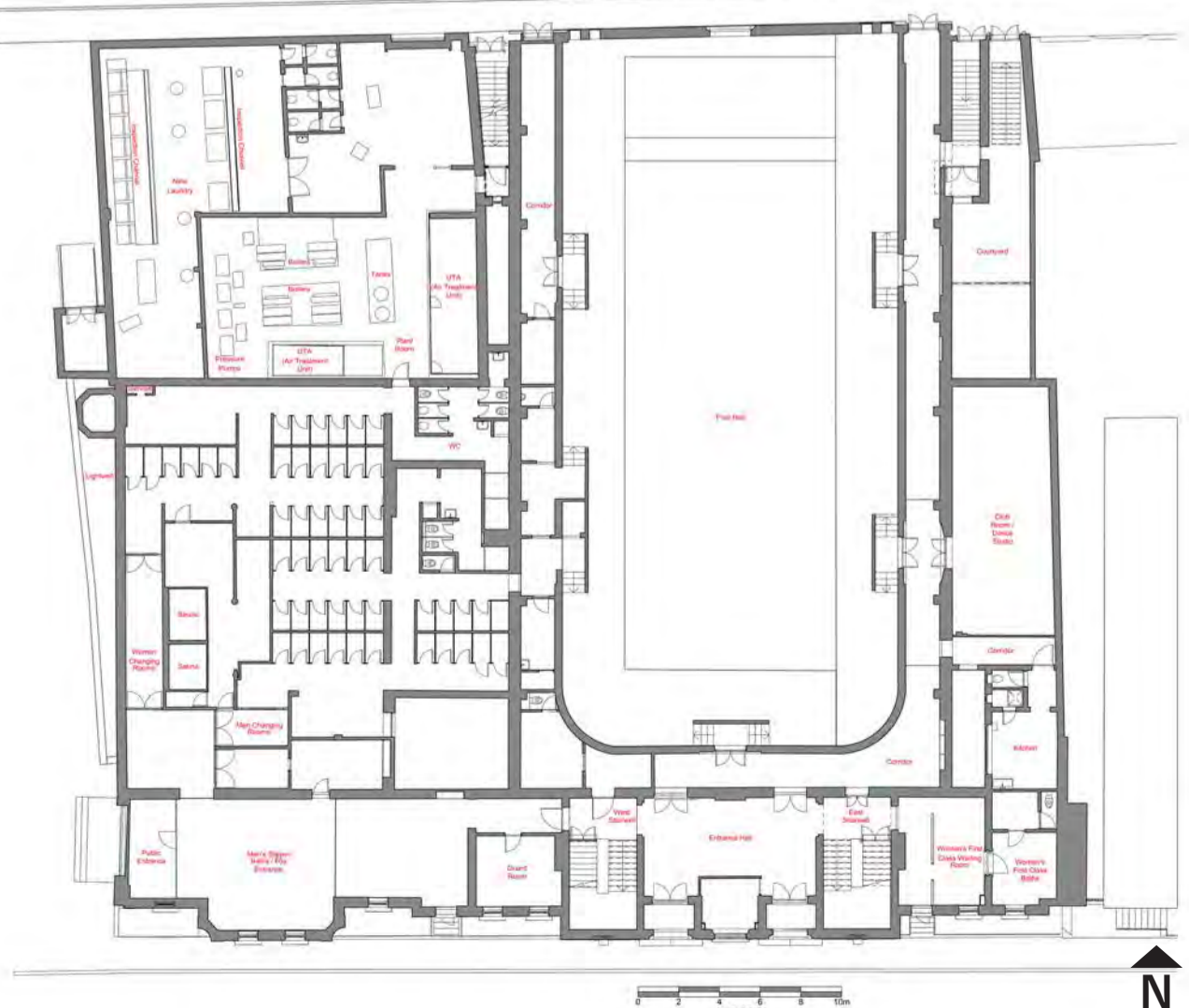
Virtual Model



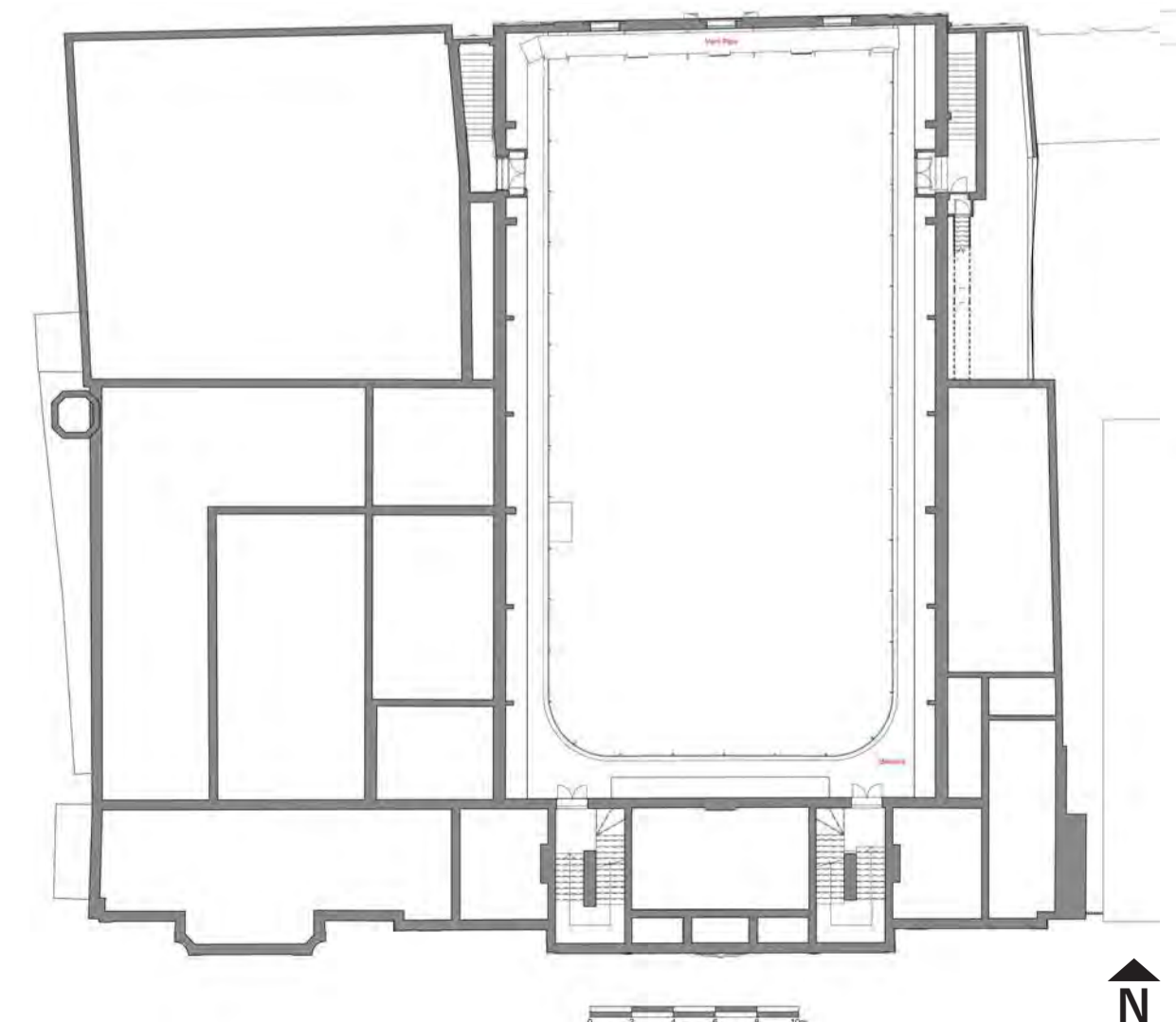
Existing Plans



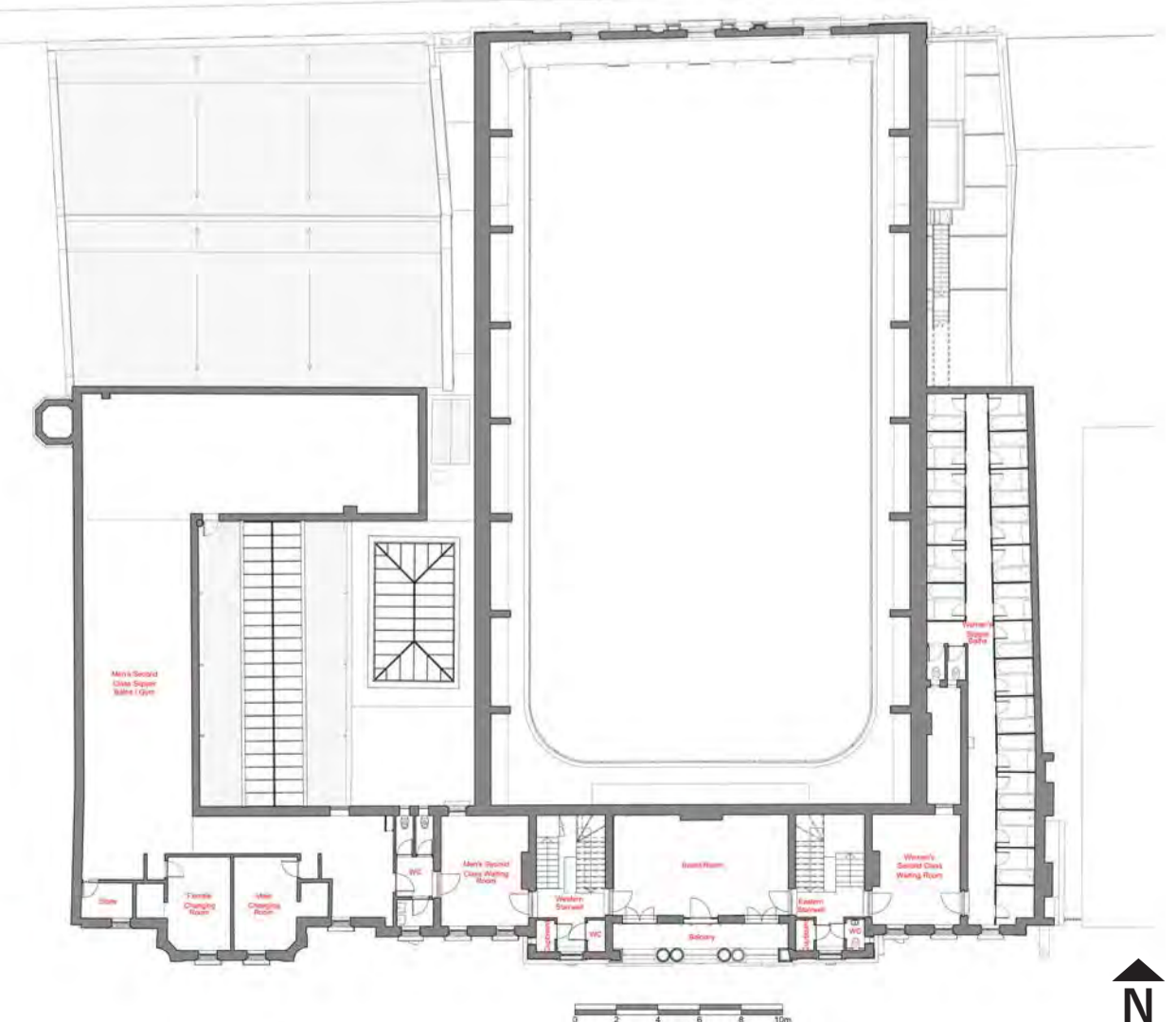
Basement



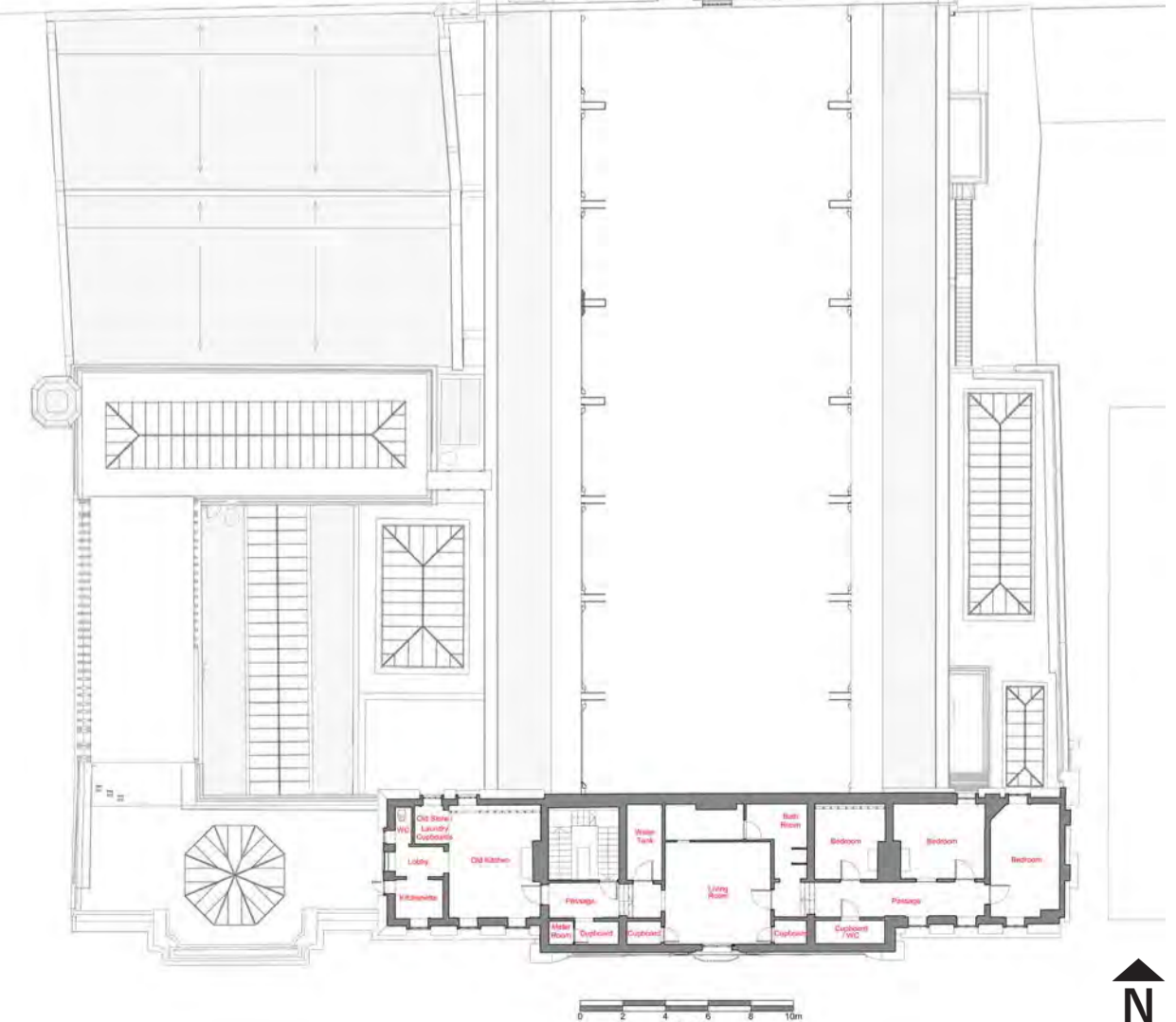
Ground Floor



Mezzanine



First Floor



Second Floor

DEVELOPMENT

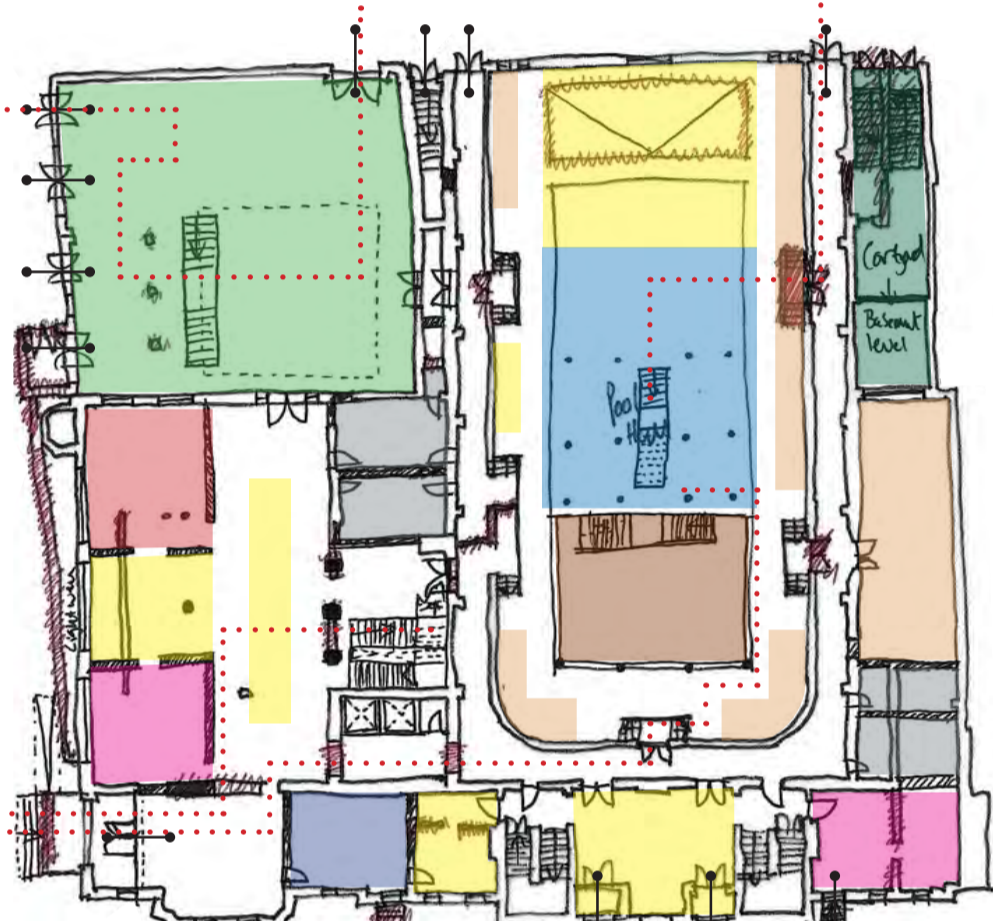
Zoning

- █ Exhibition Space
- █ Private Studio
- █ WC
- █ Mixed Use
- █ Focused
- █ Refuge
- █ Courtyard
- █ Botanical Cafe
- █ Shop
- █ Share + Approach
- █ Conversational
- █ Staff / Storage

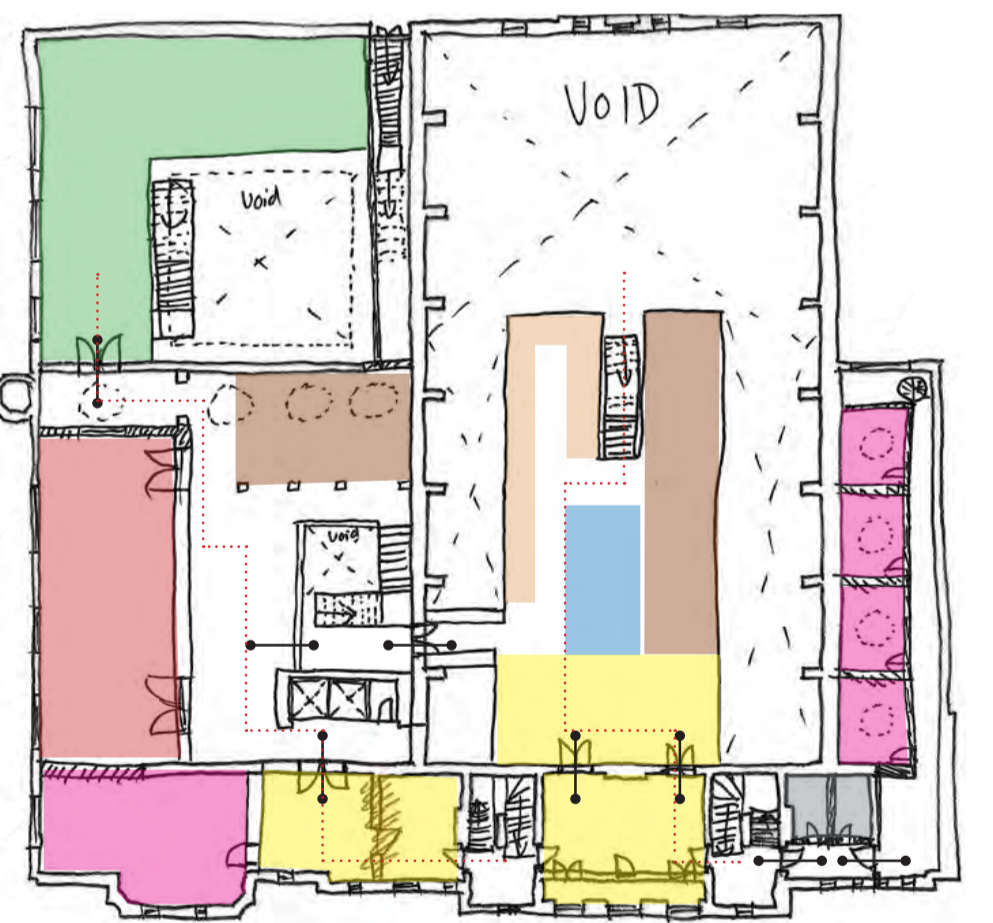
Basement



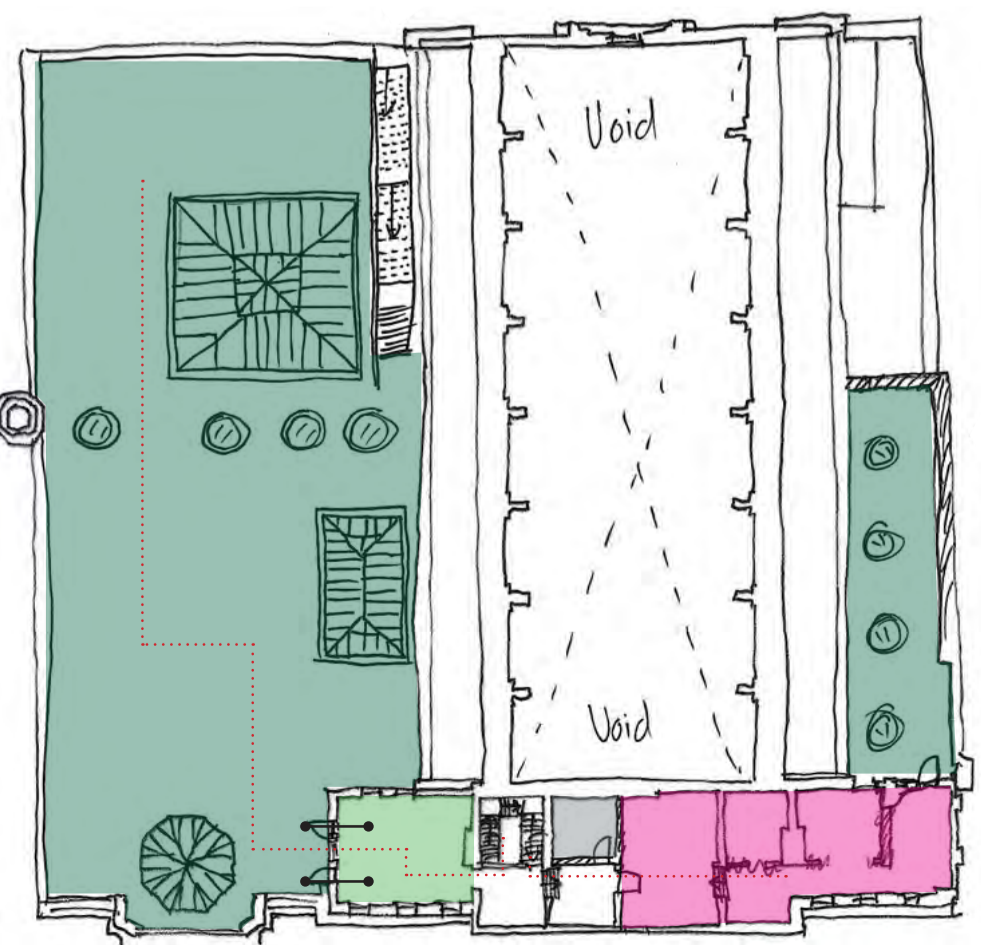
Ground Floor



First Floor

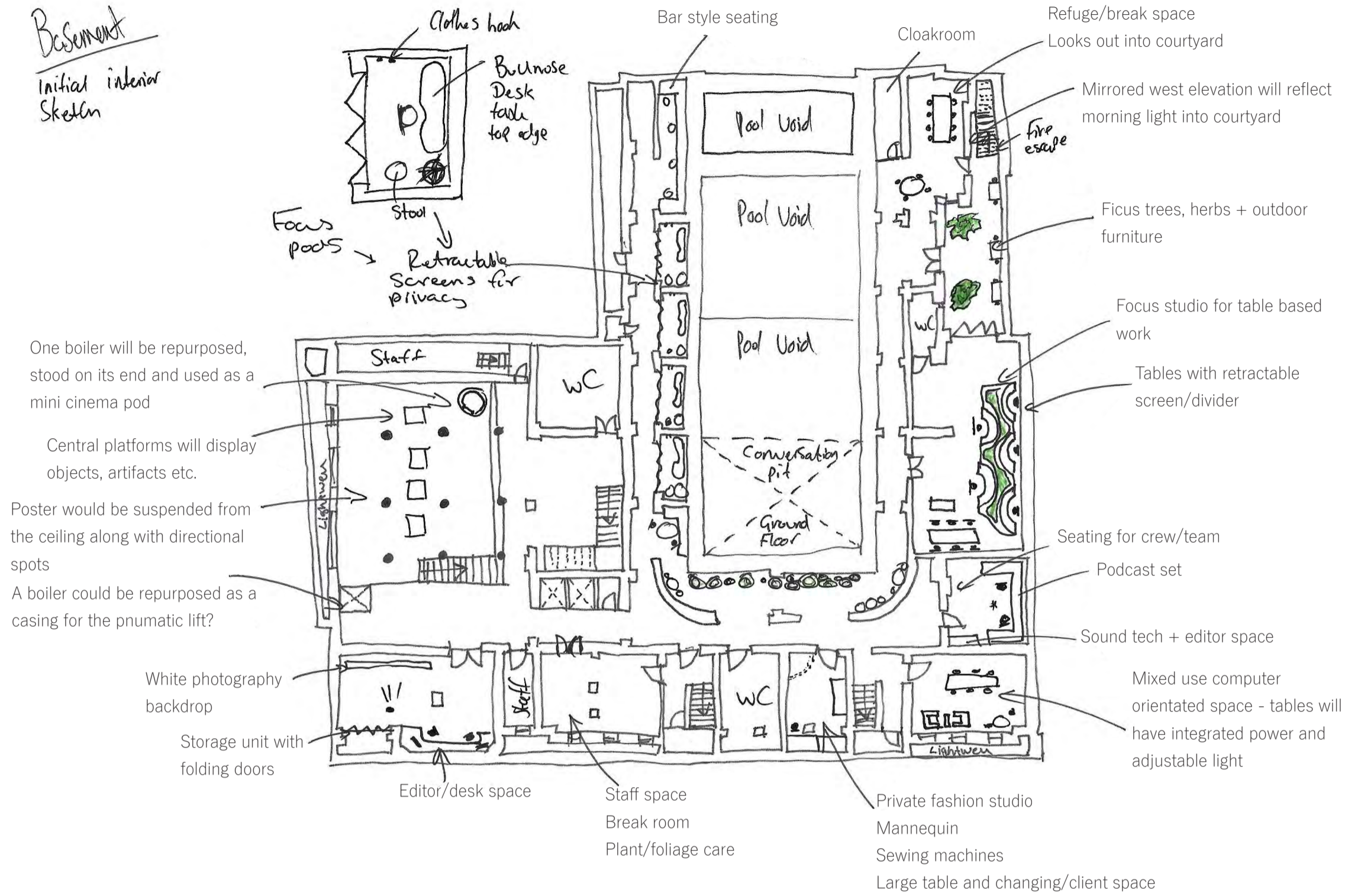


Second Floor

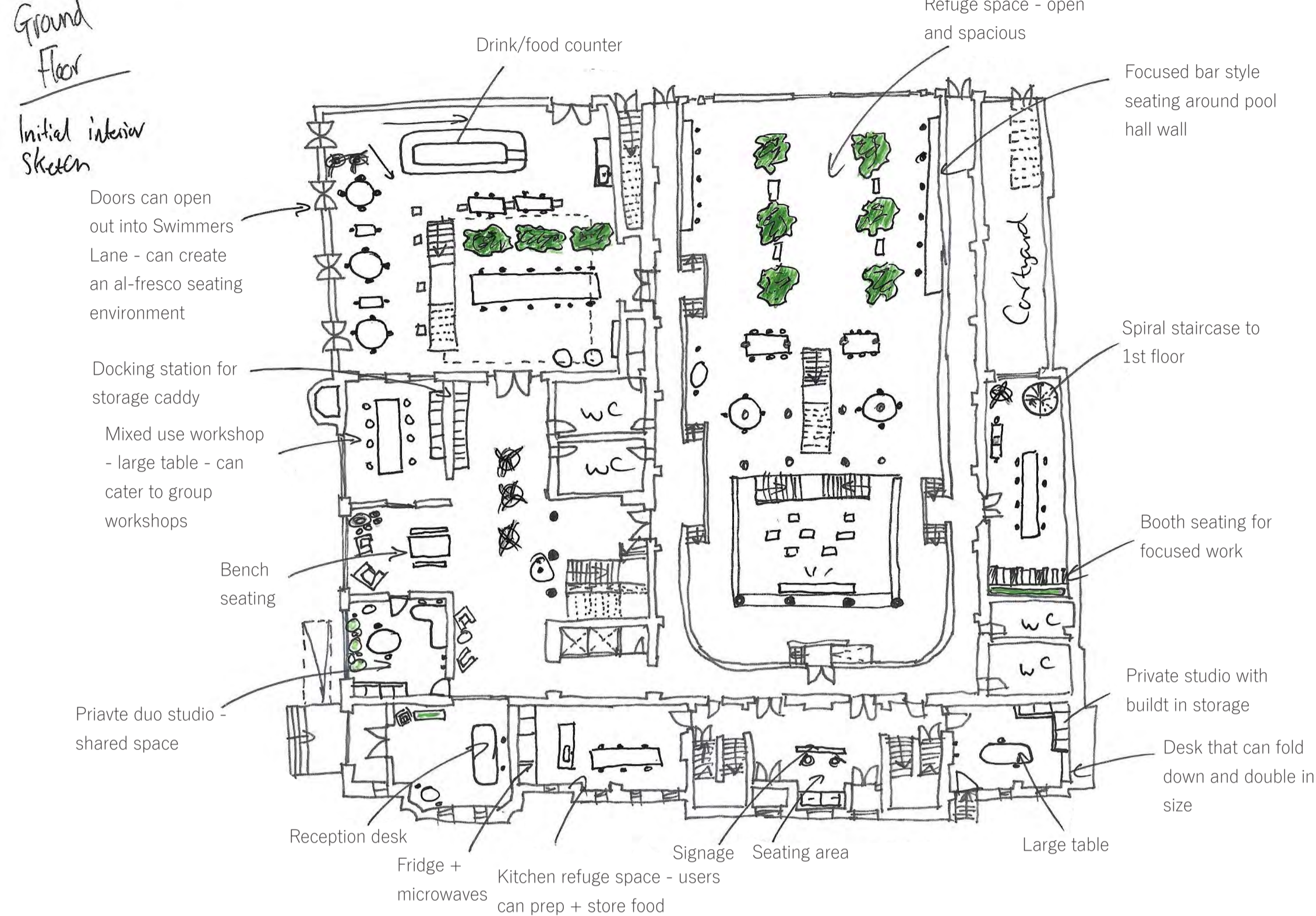


Initial Interior Sketches

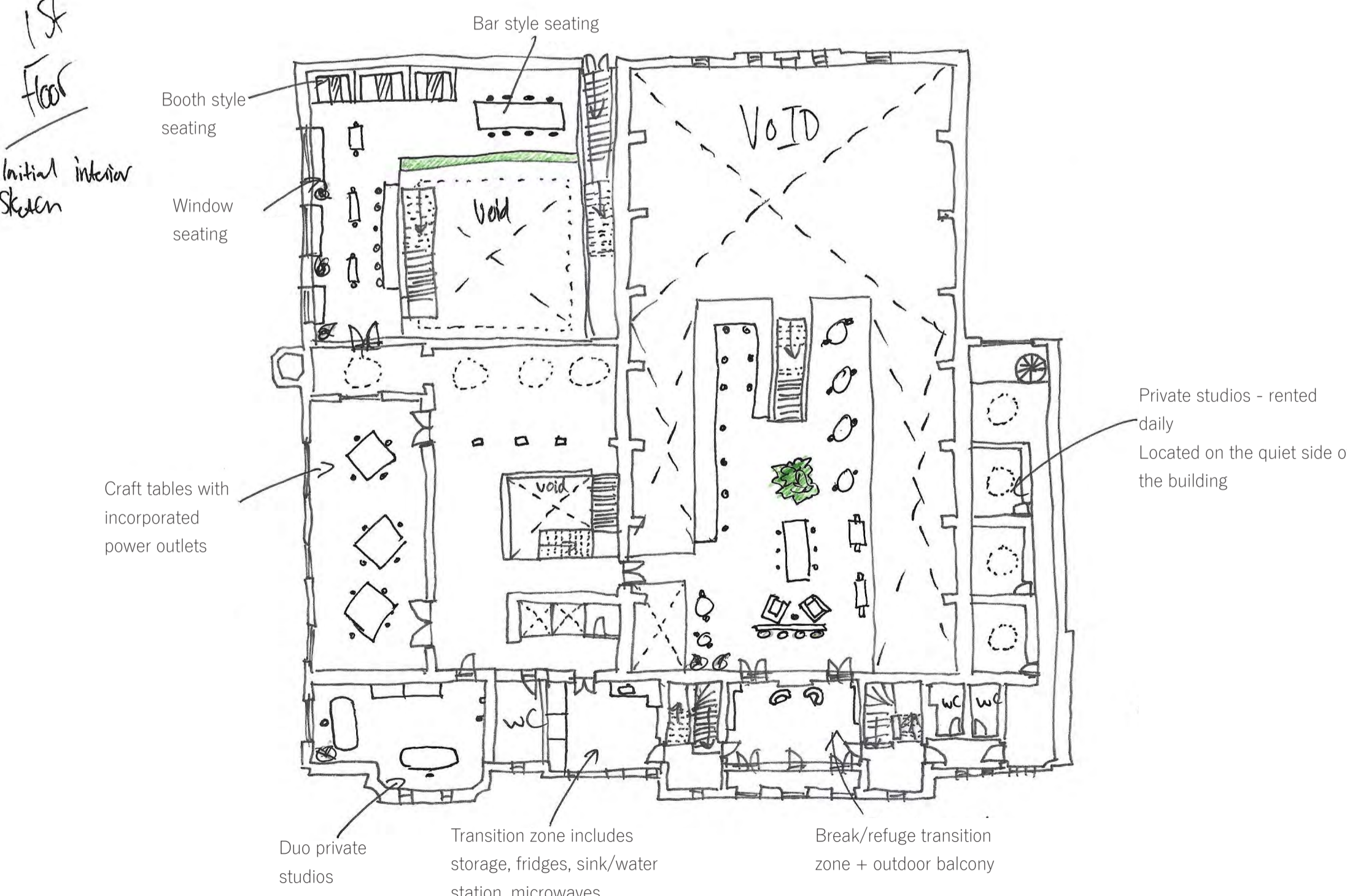
Basement
Initial interior Sketches



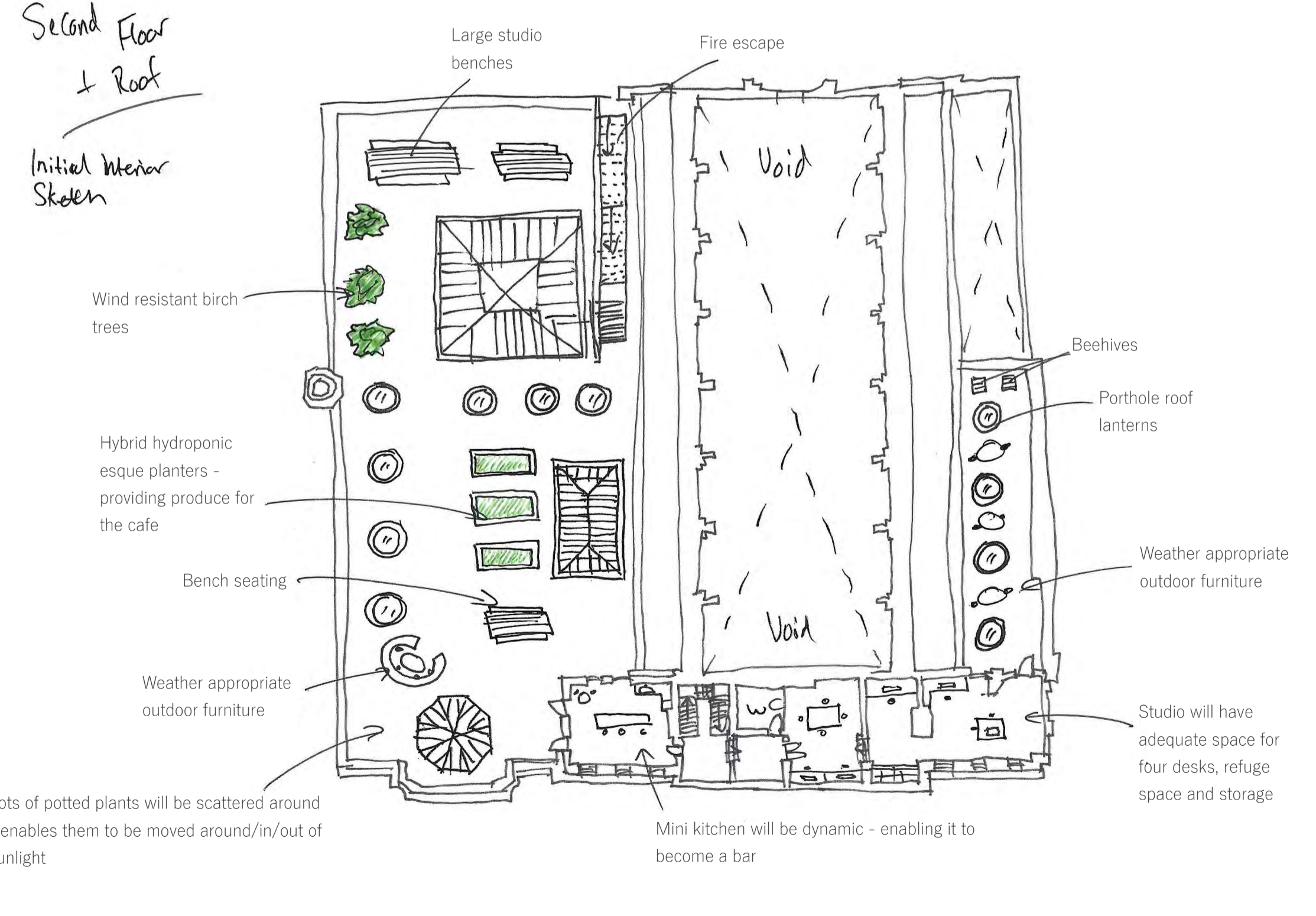
Ground Floor
Initial interior Sketches



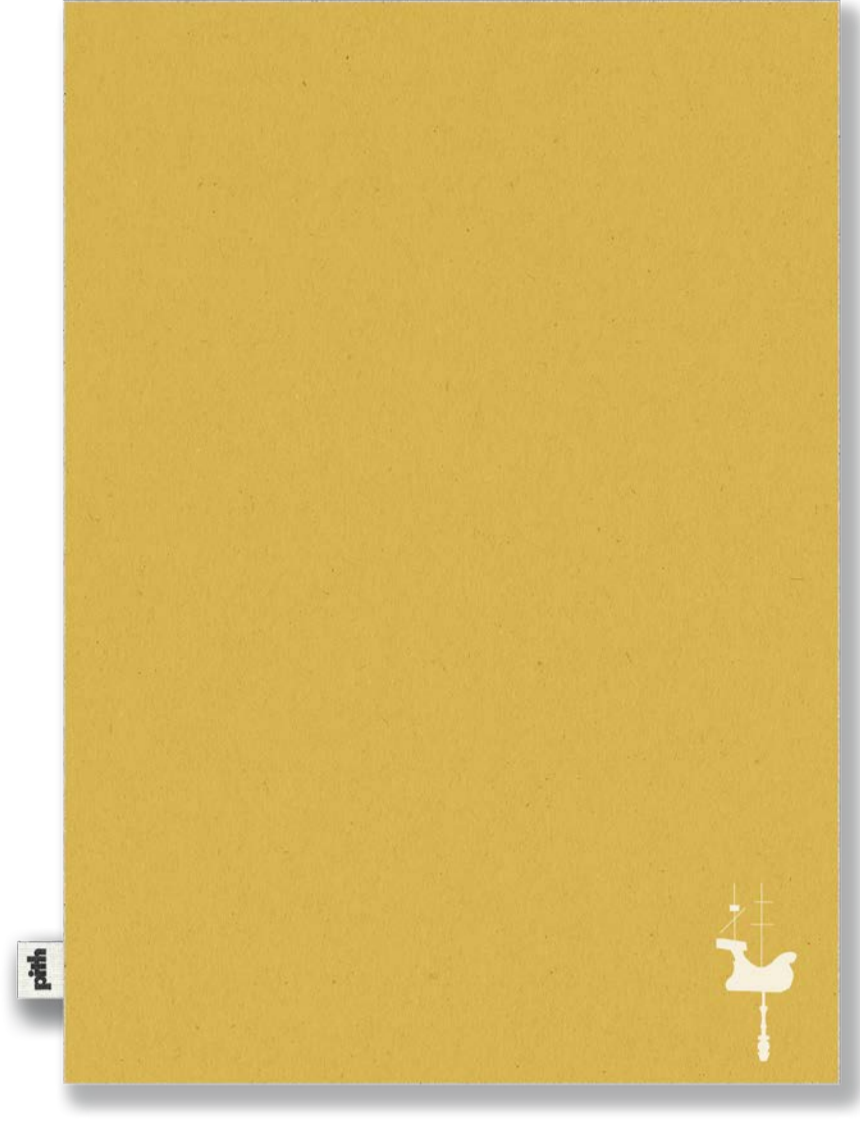
1st Floor
Initial interior Sketches



Second Floor + Roof
Initial interior Sketches



BRANDING



Pith creates quality, functional sketchbooks, notebooks and planners made from sustainable materials. Haggerston Studios will collaborate with the small business located in Northumberland to create a unique branded sketchbook. (Planet-Friendly Sketchbooks, Notebooks, Planners & Pads, n.d.)



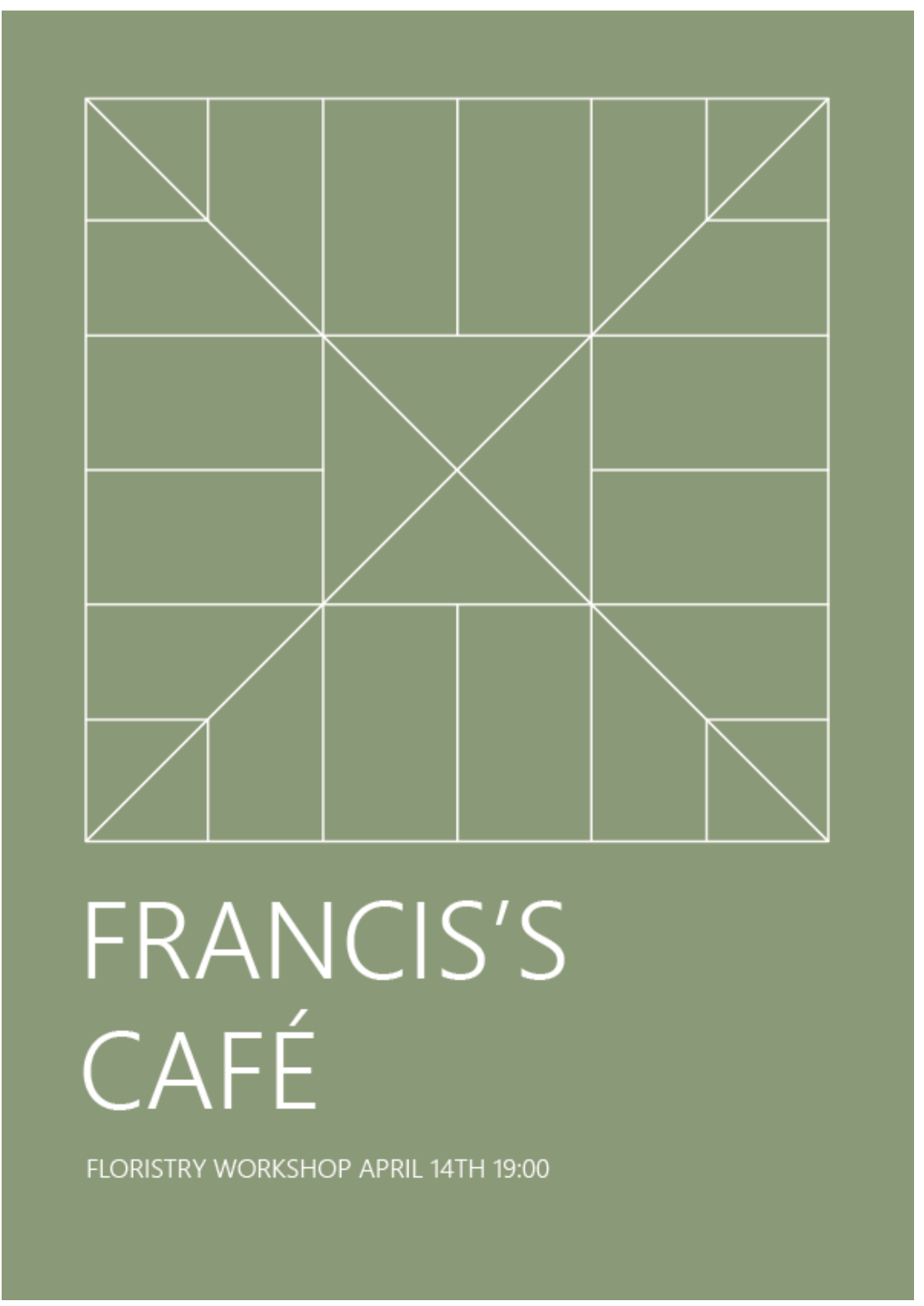
Chilly's is an instantly recognisable stainless steel water bottle brand that balances function and aesthetics. Haggerston Studios will collaborate on a water bottle collaboration simply displaying the condensed studios logo. (Yellow Bottle | Pollen Yellow Water Bottle, n.d.)



Hackney Honey will be sold in Francis's café and is a by-product of a community intuitive set up by Haggerston Studios, aiming to introduce beehives onto rooftops within Hackney while also creating environments for them to thrive. Haggerston Studios will have 2 hives located on a secluded sedum flat roof on the east side of the building.

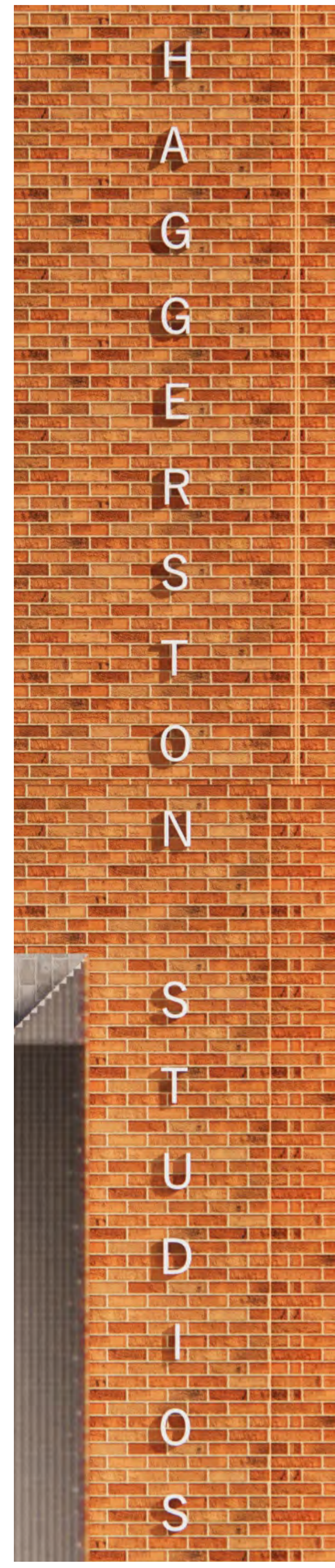
Workshop Posters

This format of branding will be used the least often, however, it is still important to have at disposal. This discreet and condensed version will mainly be used internally but could also be used as the social media profile for the brands online presence.



Signage

The signage is in font Yu Gothic and will emit a soft glow at night.



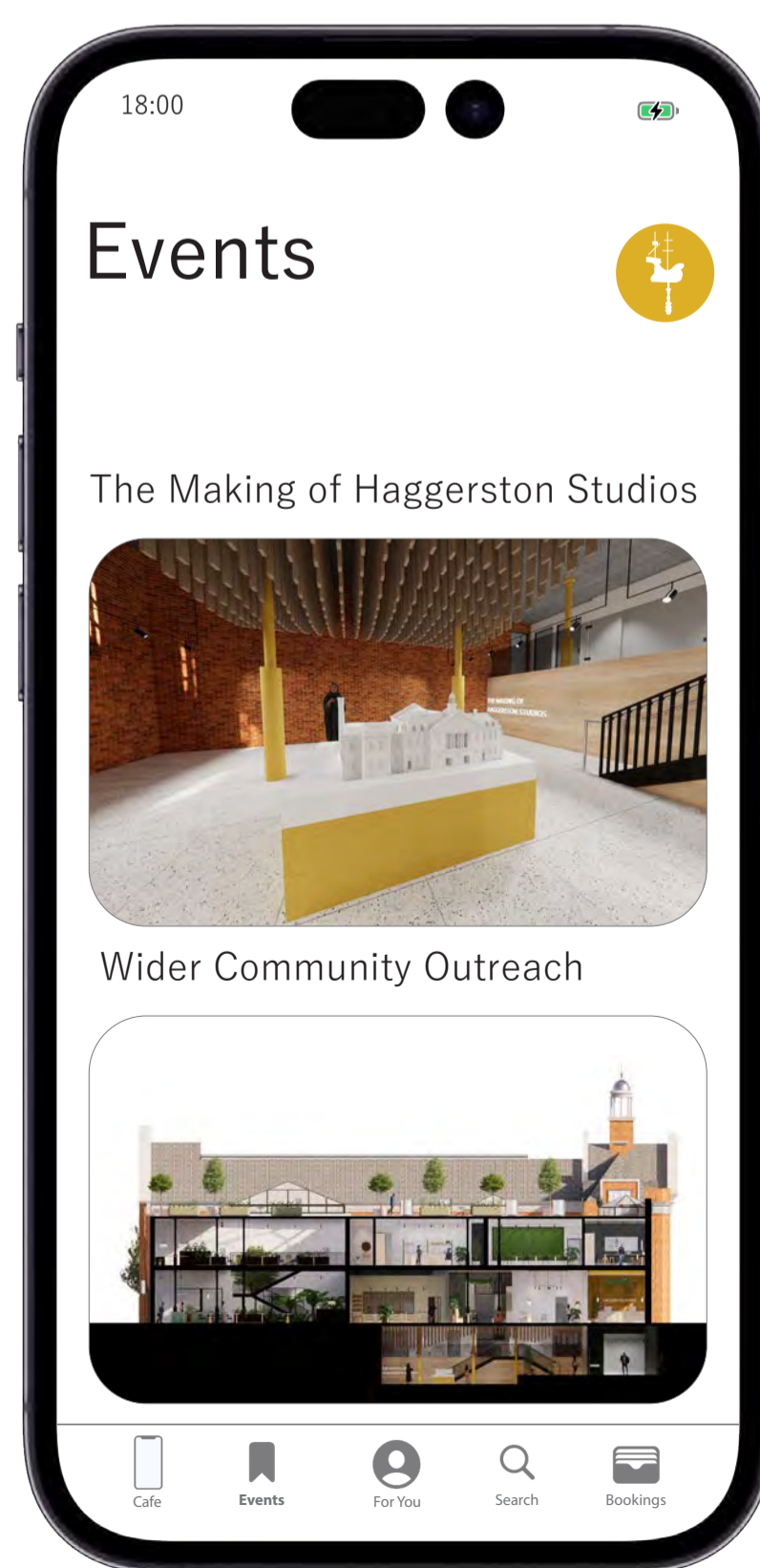
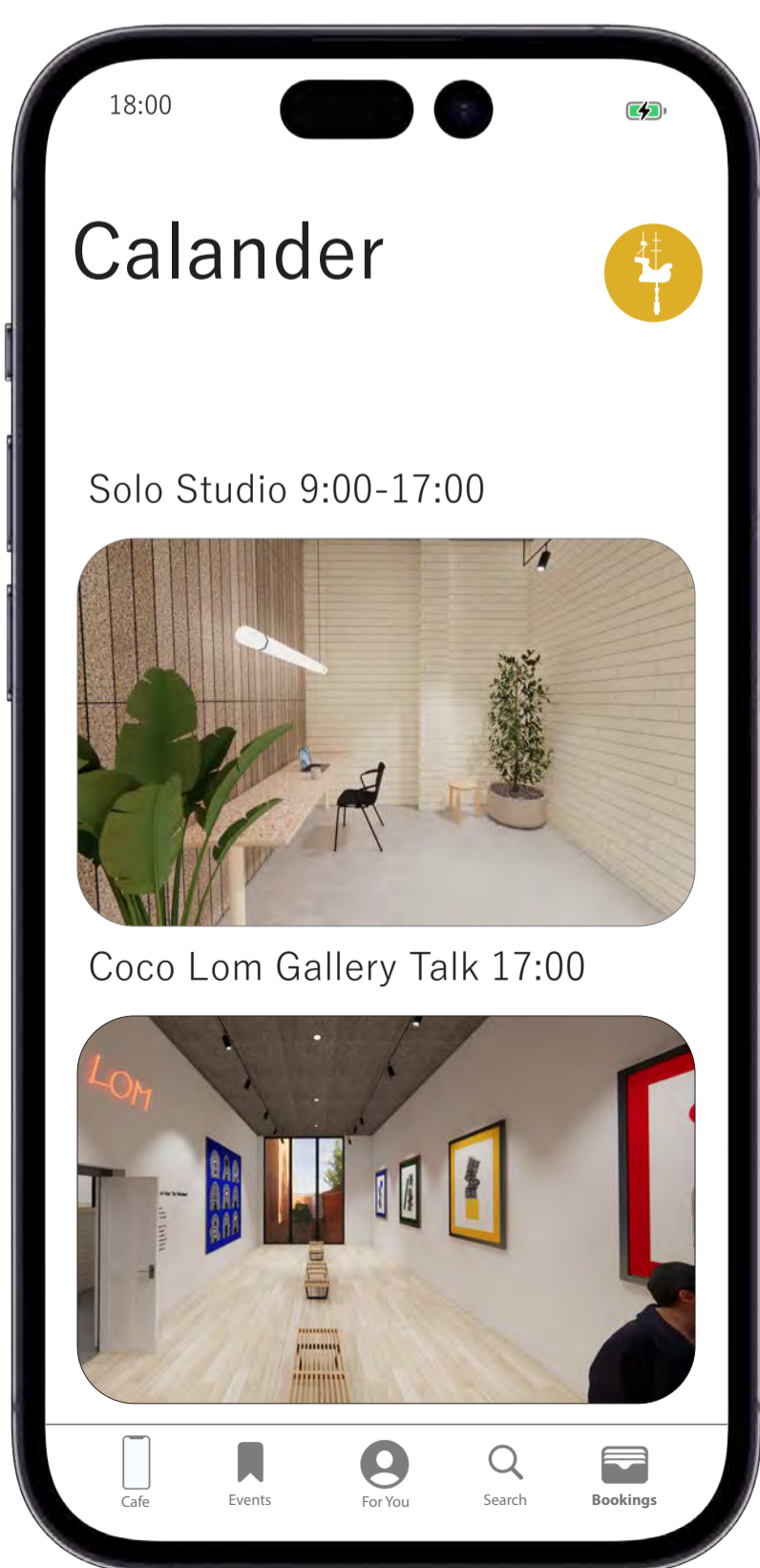
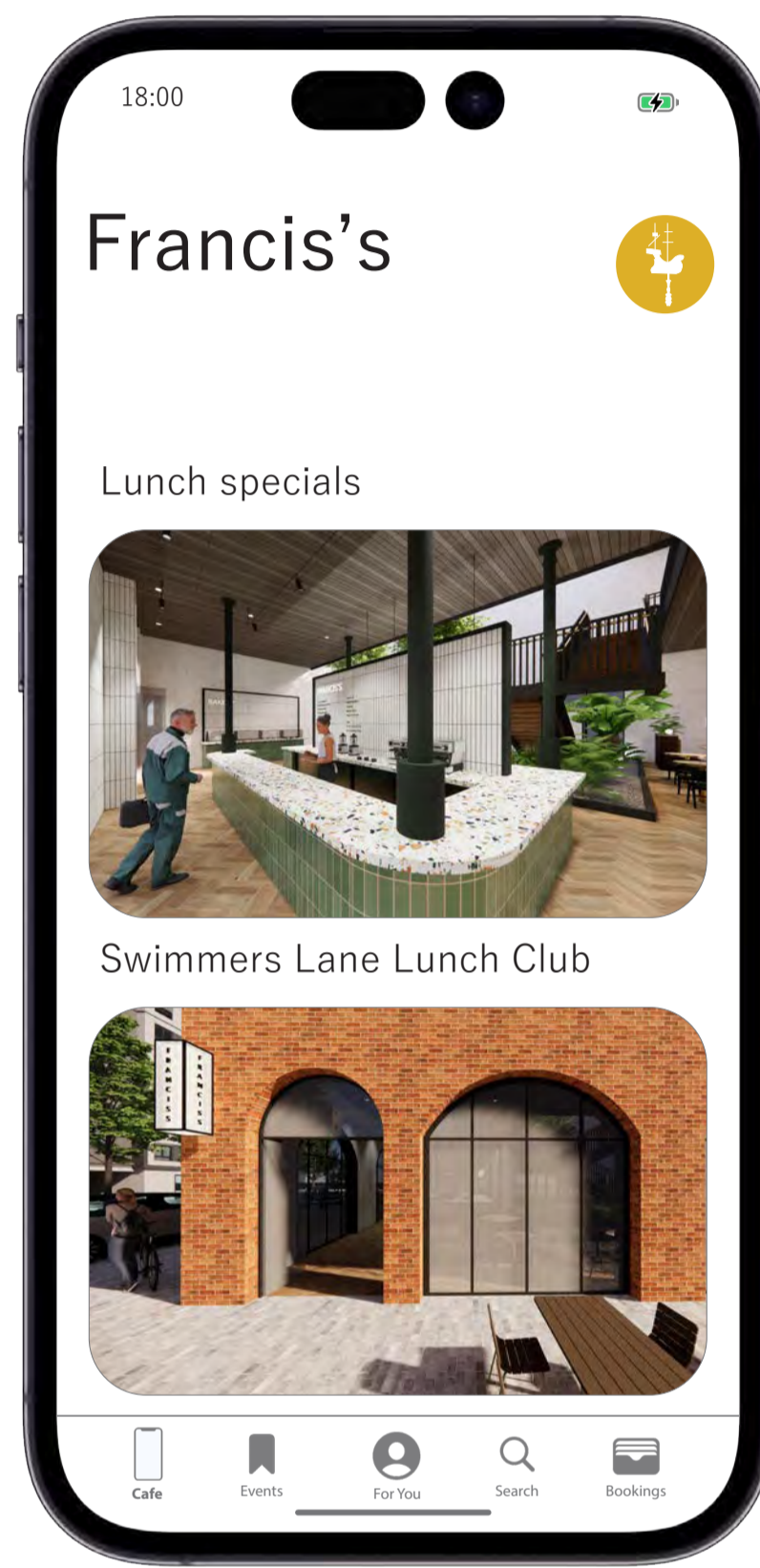
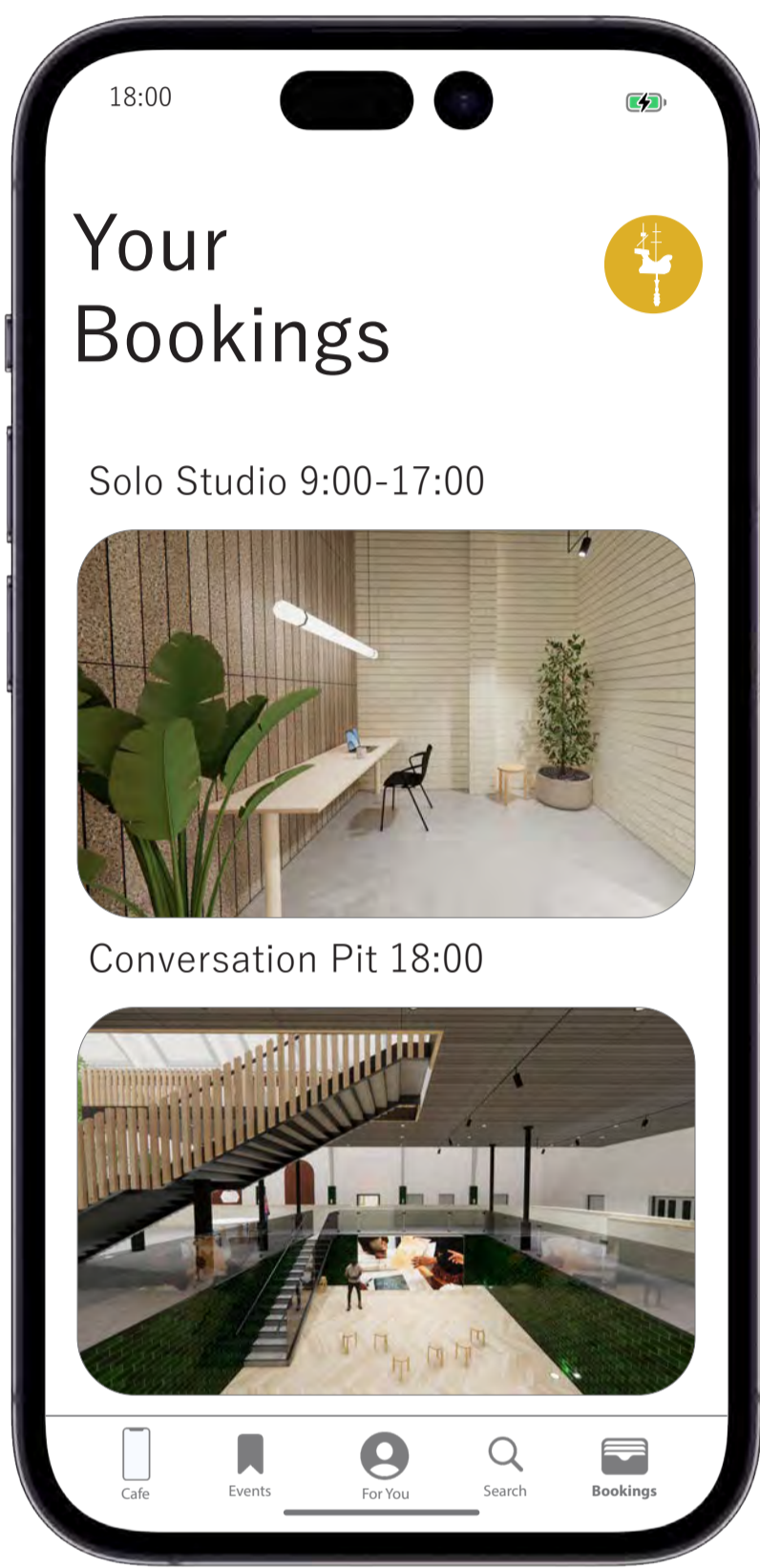
Entrance Exterior Signage



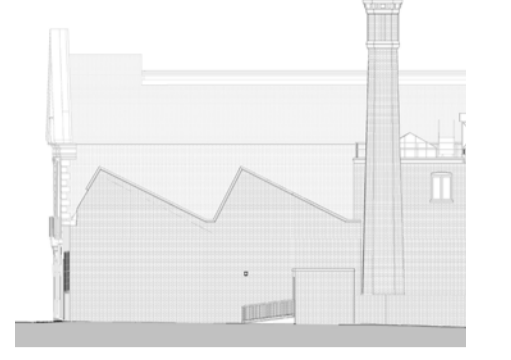
Francis's Exterior Signage

The Studio App

Haggerston Studios will have a holistic approach to creative working. The ever changing dynamics of co-working spaces will be addressed in a smartphone application. It will cover studio & workshop bookings, studio sign ups, activities, cafe promotions & menus etc. Due to the grade 2 listing of Haggerston Baths and the staggered floor levels, making the site fully accessible will be a challenge. The application will also highlight the most efficient routes of entry and notify if there are any issues with lifts/access.

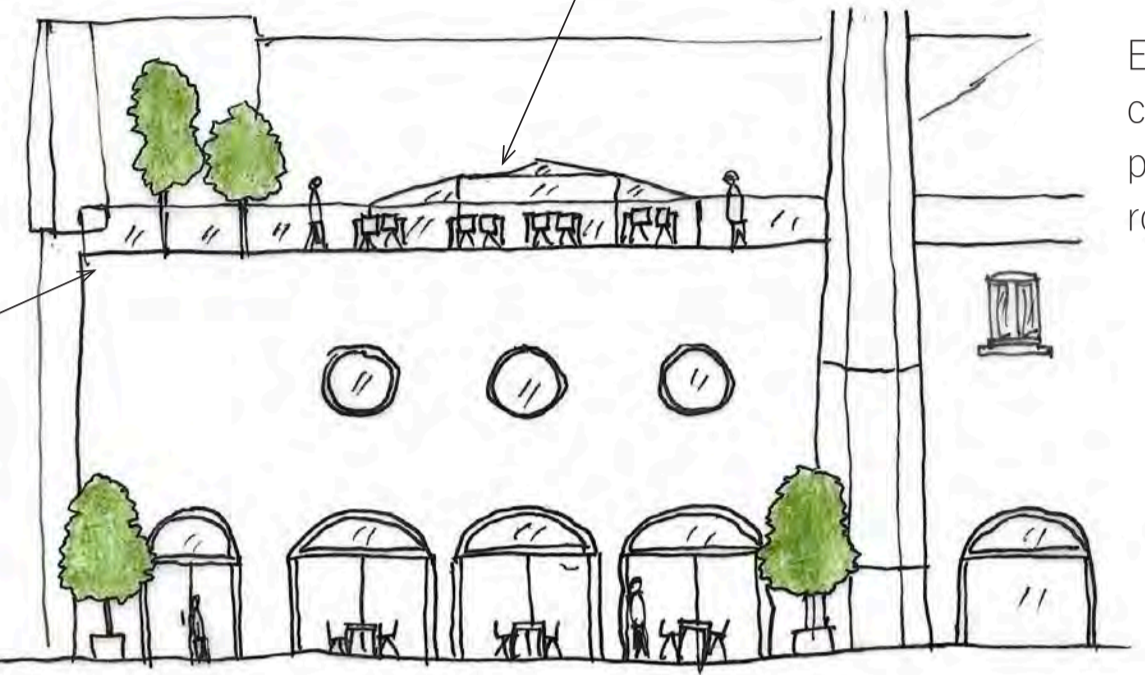


EXTERIOR



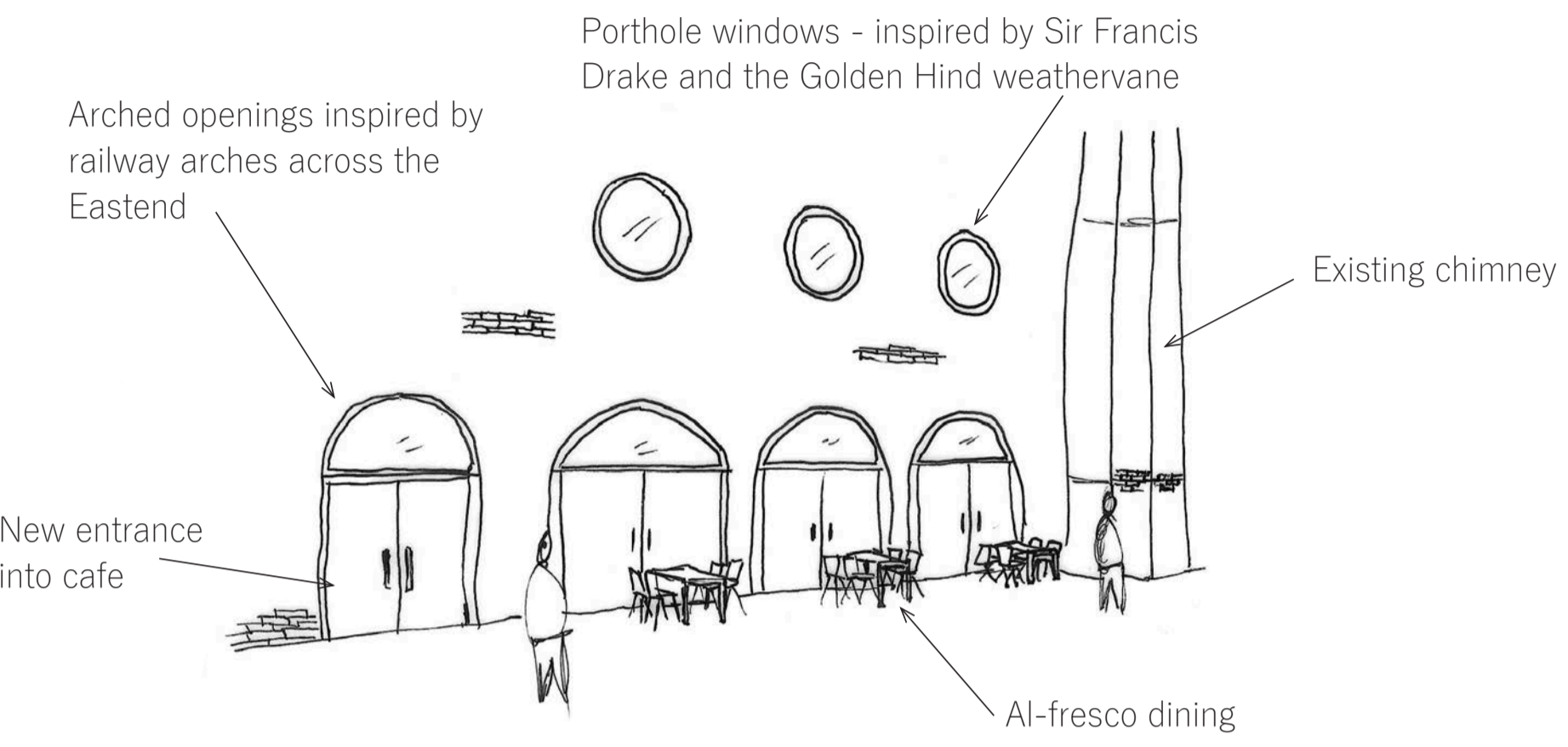
Existing Swimmers Lane elevation

Roof top kitchen garden, weather resistant studio furniture, new roof lantern above cafe

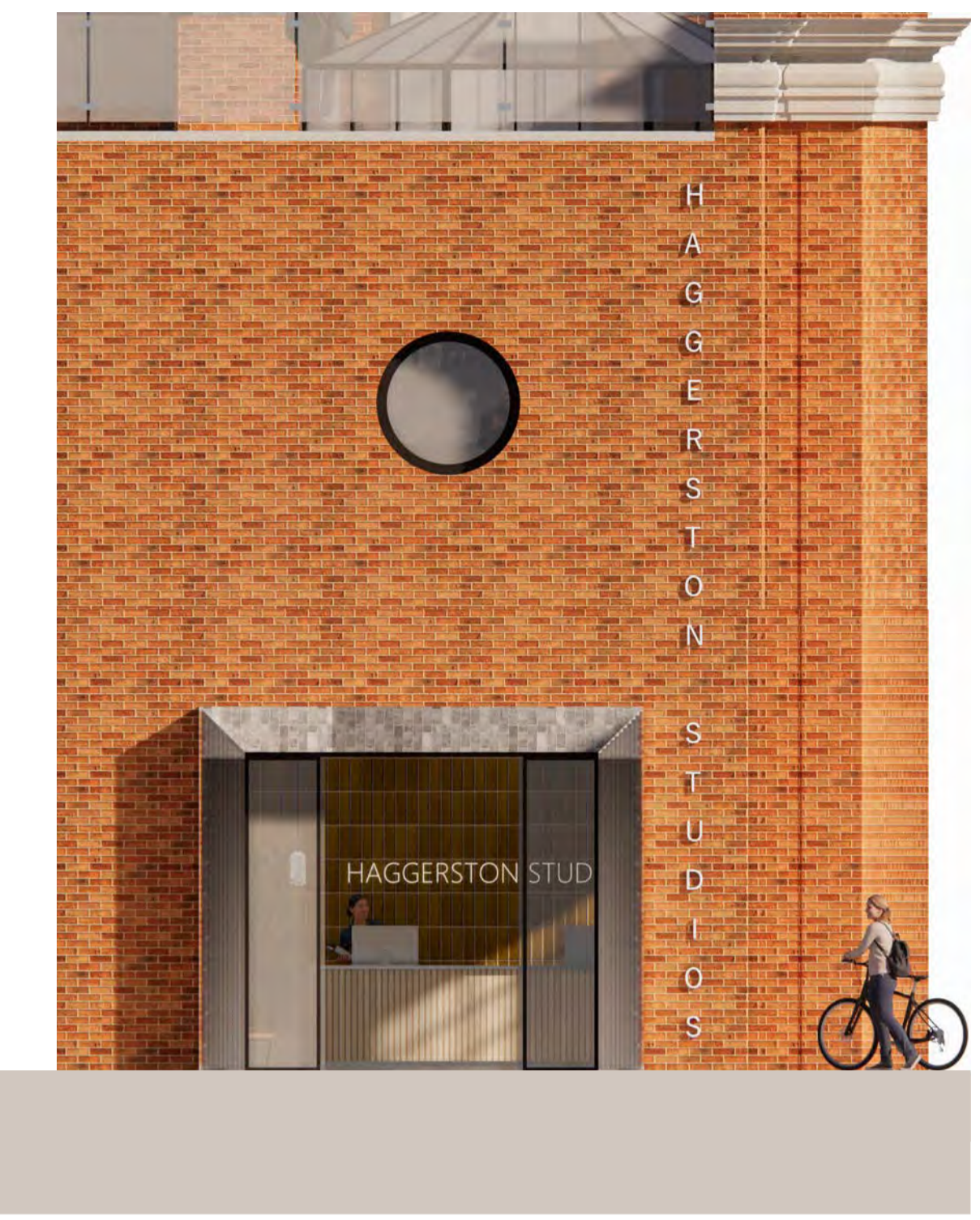


Existing chimney + pool hall roof

Proposed Swimmers Lane Elevation



Proposed Swimmers Lane Perspective

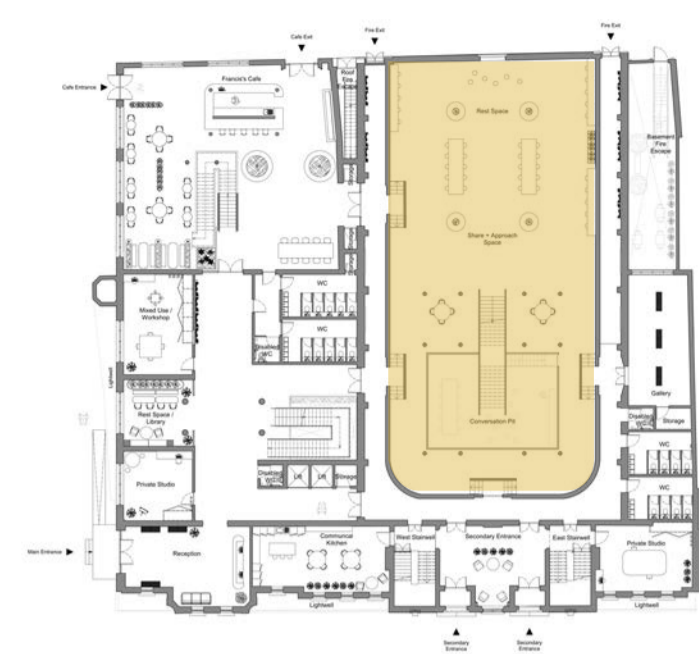




The pool hall is a central focus point for the building and is spread across the ground floor and first floor. A previous mezzanine which was sandwiched between the floors was removed to make way for a new mezzanine, this new mezzanine is now level with the first floor.

The pool hall has a strategic layout which caters to three different working modes; focussed, conversational and share + approach. The conversational working mode has manifested in a conversation pit which is located sub-ground floor in the deep end of the previous swimming pool. Share + approach can be seen towards the north of the space with casual seating around the trees and Alvar Aalto stool 60s dotted around. Focused bar style seating sits either side of the pool and the sides of the mezzanine.

The Sicilian potted ficus trees are placed in the direct path of the sun and each pair of trees get equal amounts of sunlight. Devils ivy is grown on stainless steel mesh which sits on the side walls of the pool. This specific species requires little sunlight and minimal watering.



Ground floor & first floor



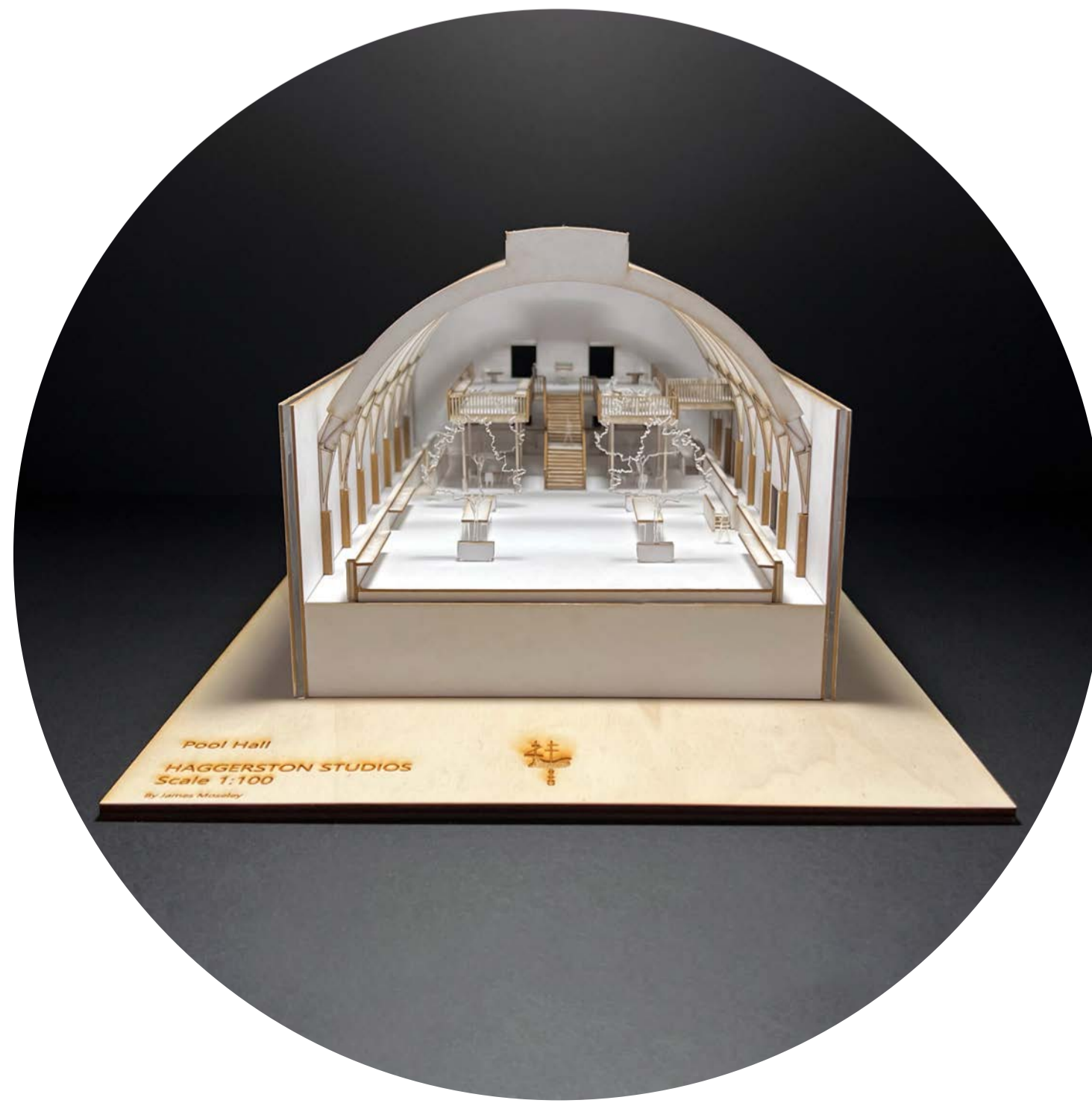
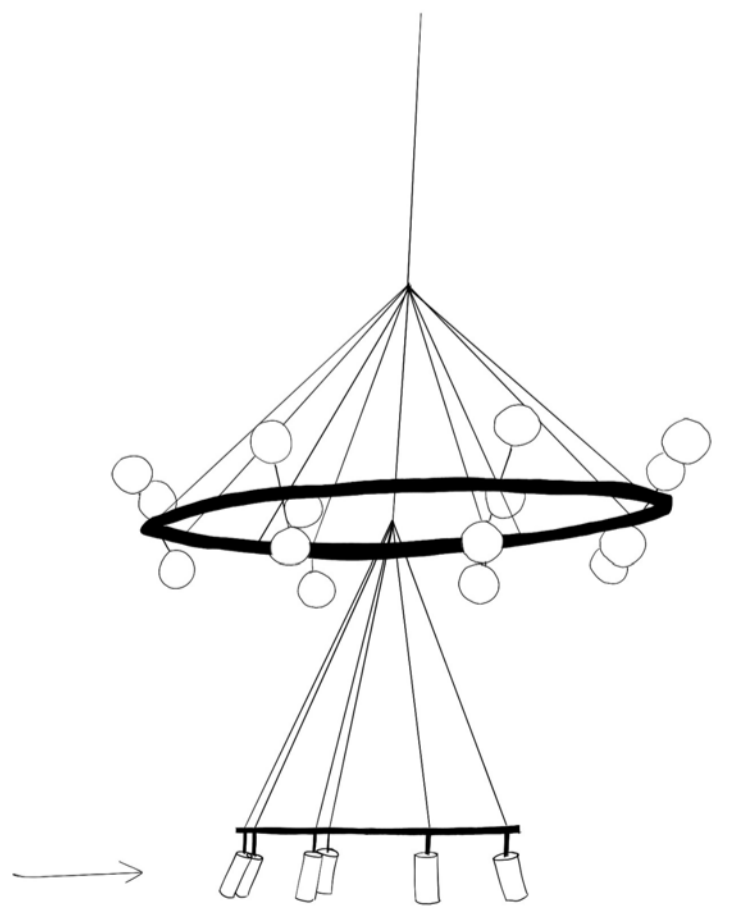
- Adding Contextual Character is a goal of this project
 - When the baths were built, Chandeliers hung in the pool hall

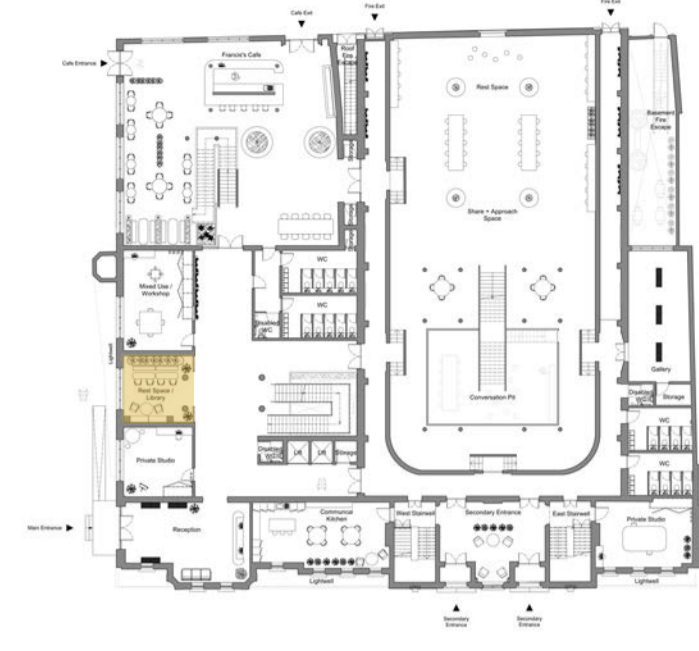


Haggerston Baths opening day 1906 - Harry Adams

Globe duo was inspired by Chinese particles - related to the site's former use

The globe's attachment to the upper ring will be fabricated 0.7mm away at Fab Rio 3D printing - using formated Sugar PLA filament





Ground floor



The gallery will hold temporary exhibitions showcasing local creatives work. The art pieces are lit with an adjustable suspended track lighting system, with temperature and brightness controls. The space is designed so the focus remains firmly on the artwork, however, it boasts a view down into the basement courtyard.

Wood wool acoustic panels dampen sound and George Nelson benches sit centrally. The current exhibit focuses on artwork by Hackney based artist Coco Lom. Coco's work has a bright and contemporary feel and that is also portrayed in the bright coral LED 'neon' sign.



Scan here to view a 360 view of the space

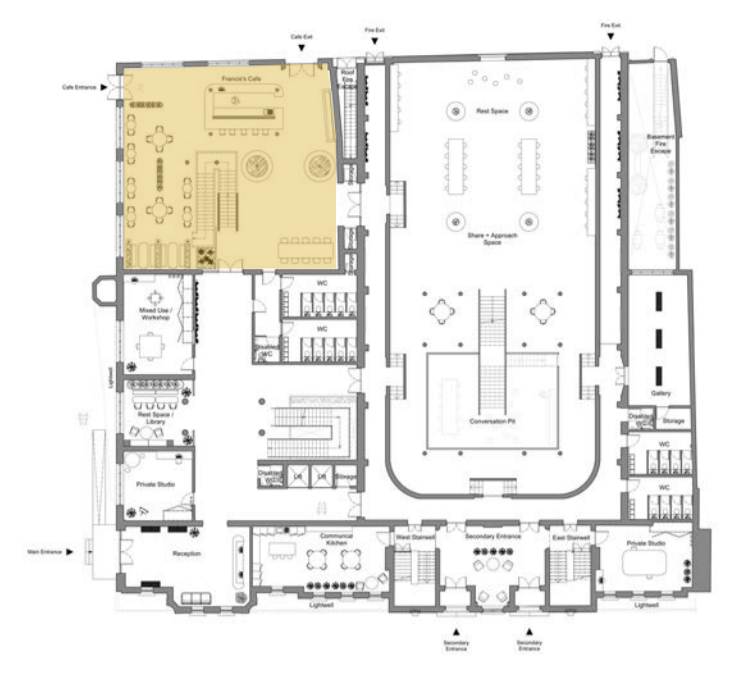




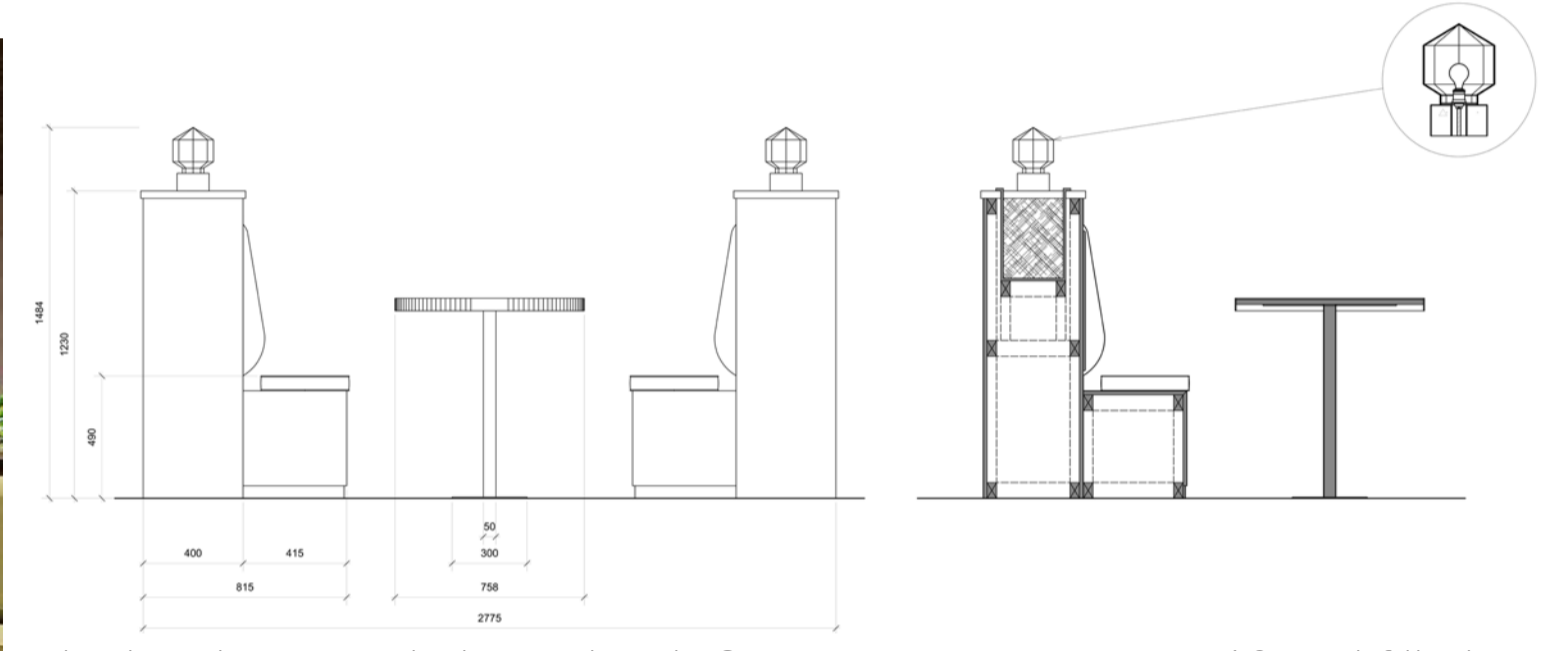
Francis's café gets its name from Sir Francis Drake who's ship is represented on the gold gilded weathervane on the south side of the building. The space acts as a hub for the wider community, outside but not excluding the creative community within the studios. It is the only part of the building that is accessible to the wider public and provides casual seating and booths for coffee, light lunches and working.

The atrium sits under a new roof lantern which is styled in the same way as existing lanterns in the building. The two potted Sicilian ficus trees sit in the sunlight and shade friendly palms and ferns sit alongside the stairs.

Acoustic cork ceilings control the sound within the space and bespoke pendants hang above the booths and bar style seating on both floors.



Ground floor & first floor



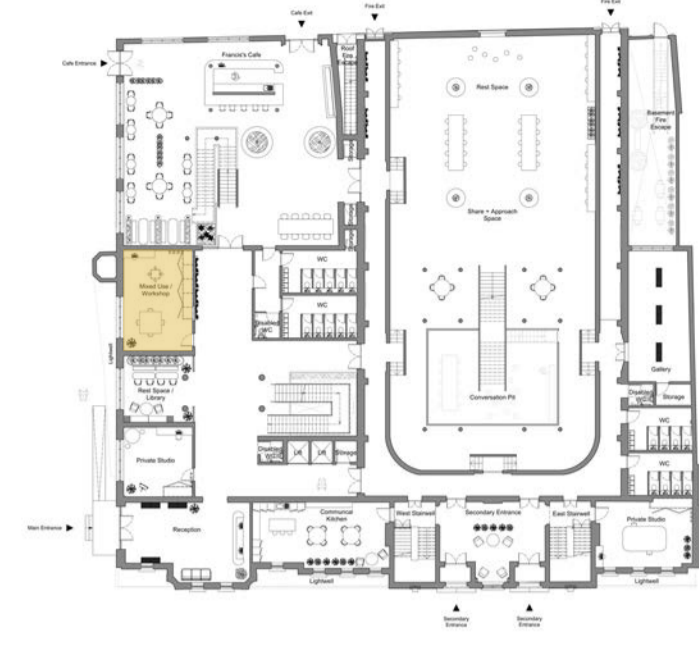
The booths are upholstered with Camira Hemp Acre HWP19 and filled with recycled high-density foam. The table top is Foesso terrazzo Slate grey walnut which compliments the crown dark ebony veneer which will wrap around the sides.





Looking out onto Swimmers Lane, this workshop is an essential space for any creative wanting to use light machinery and equipment. The space caters to 6 people and includes a large work surface with bench vices, a bespoke storage unit that includes bench drills, sanders, storage caddy space, and drawers with tools and other equipment.

The space is an open workshop and can be booked through the Studio App.

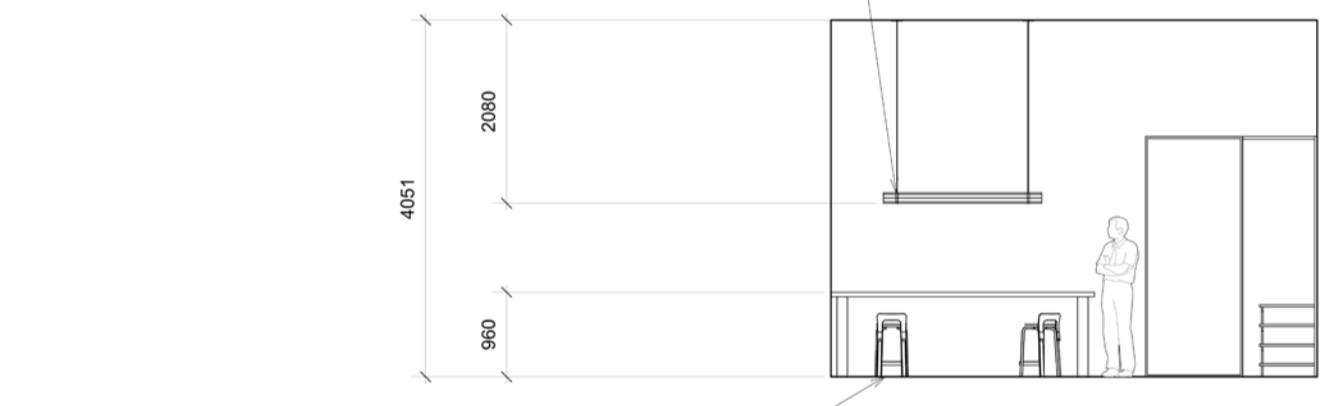


Ground floor



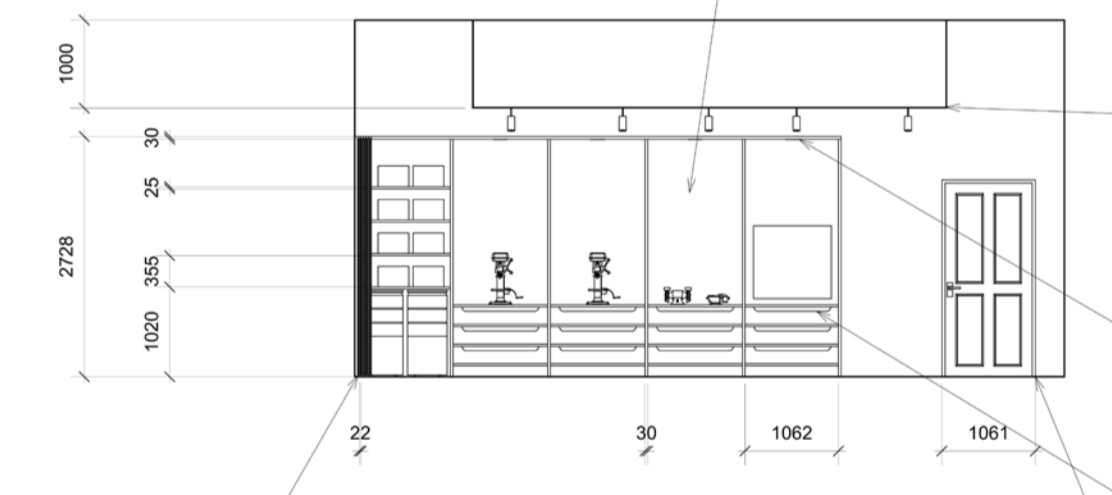
Bespoke barrel pendant shade body - 3D printed using a form of polyester made from fermented sugarcane (100% natural - zero plastic) - hanging above a standing table, which has colour temperature and brightness controls

Bespoke unit which will store some of the studio storage caddy's along with tools and machinery which will be available to any studio member - cork acoustic backing will reduce sound



Bar style seating/standing desk with a birch plywood top two Alvar Aalto K65 high chairs will be specified

Elevation A



Elevation B

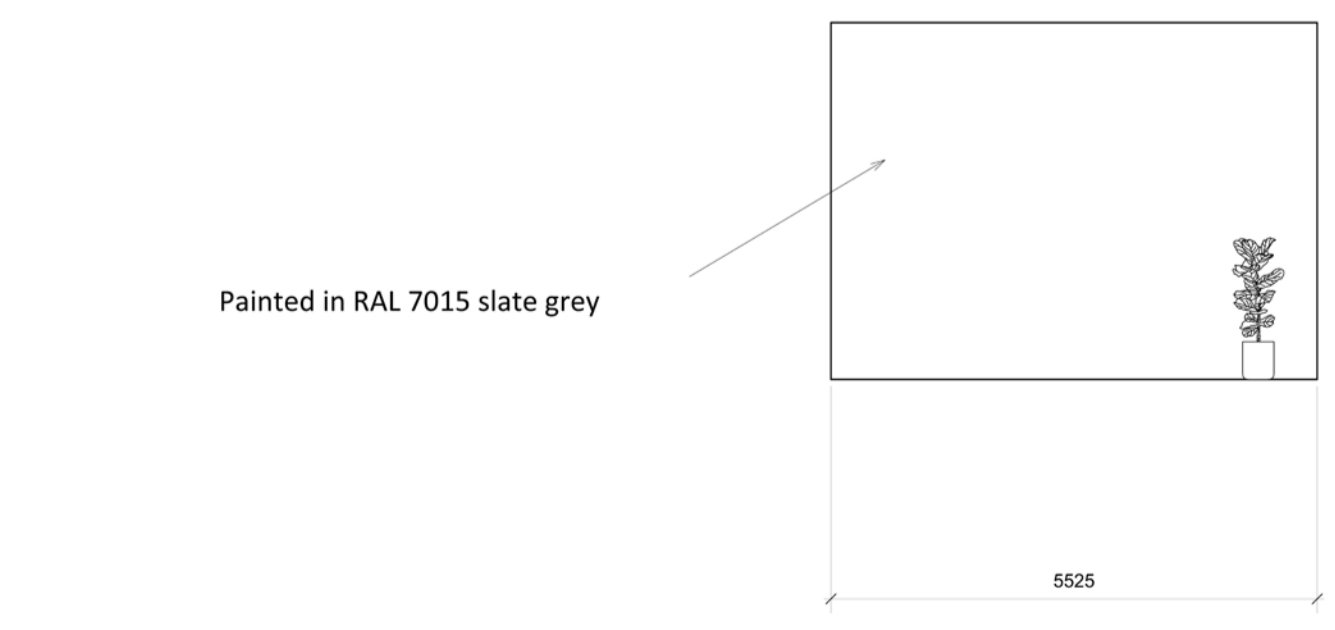
Directional suspended track lighting allows for the light positioning to be changed when needed

The bespoke storage unit will have down lighters above the machinery

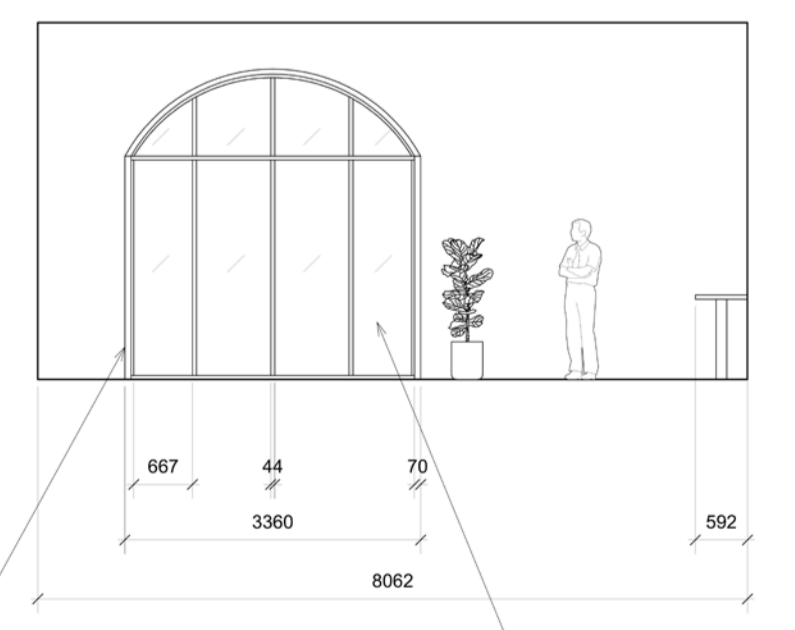
Large trays will house shared tools and equipment

The unit doors have a ash timber frame and the inner door is made from a 0.3mm sheet of corrugated steel

FD605C bespoke door painted in RAL 7035 light grey (all doors within the building have been designed and will be specially made to measure by a local carpenter)



Elevation C



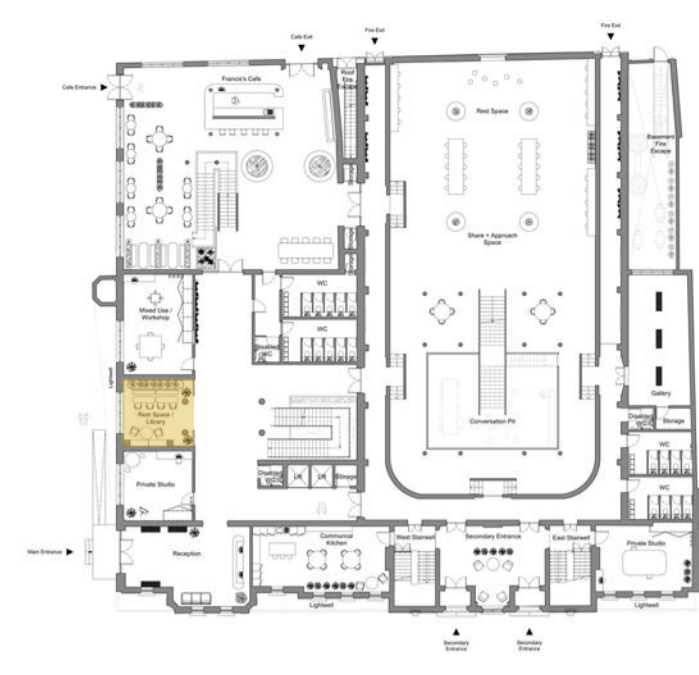
Elevation D

The frame will be painted in RAL 9004 Signal Black

A large railway arch inspired window looking out onto Swimmers lane

Scan here to view a 360 view of the space





Ground floor

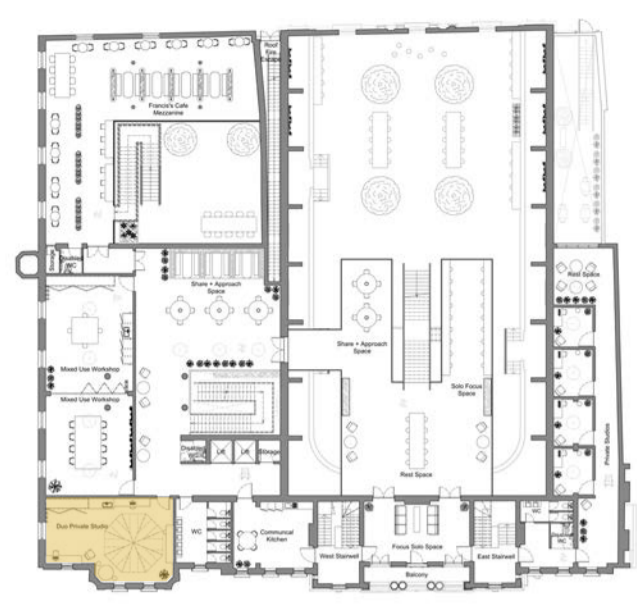
Through research into well-being and health in working environments, it was discovered that having adequate refuge spaces seepage and away from working areas hugely benefitted users' mental health. Efficiency in the workplace increased when appropriate and calming spaces were provided.

This rest space looking out onto Swimmers Lane provides users with a peaceful and calming environment. A muted colour scheme with greenery heavily incorporated meets the brief of this space. The half booth design was inspired by the booth designs in Francis's café.



Scan here to view a 360 view of the space



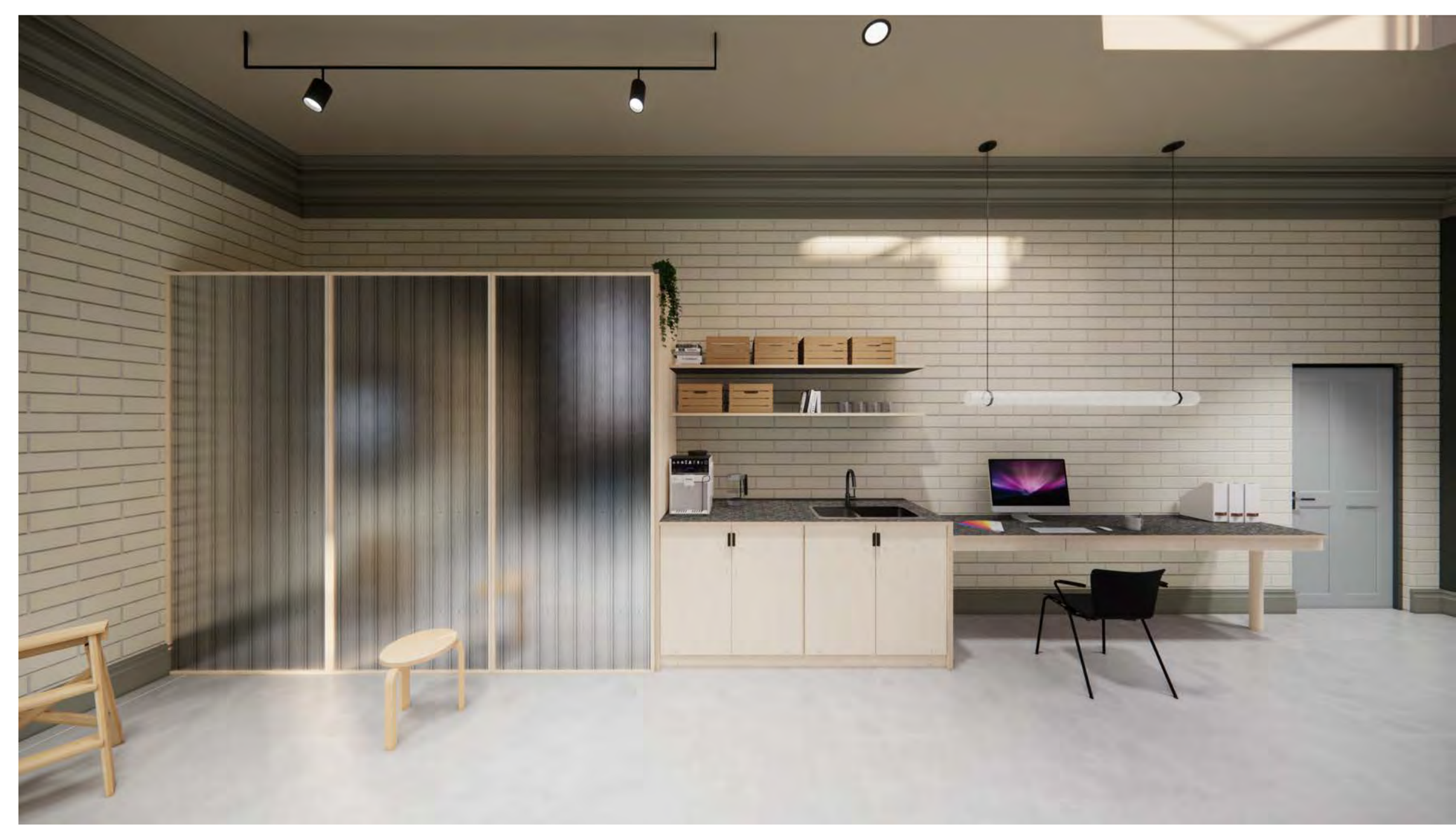
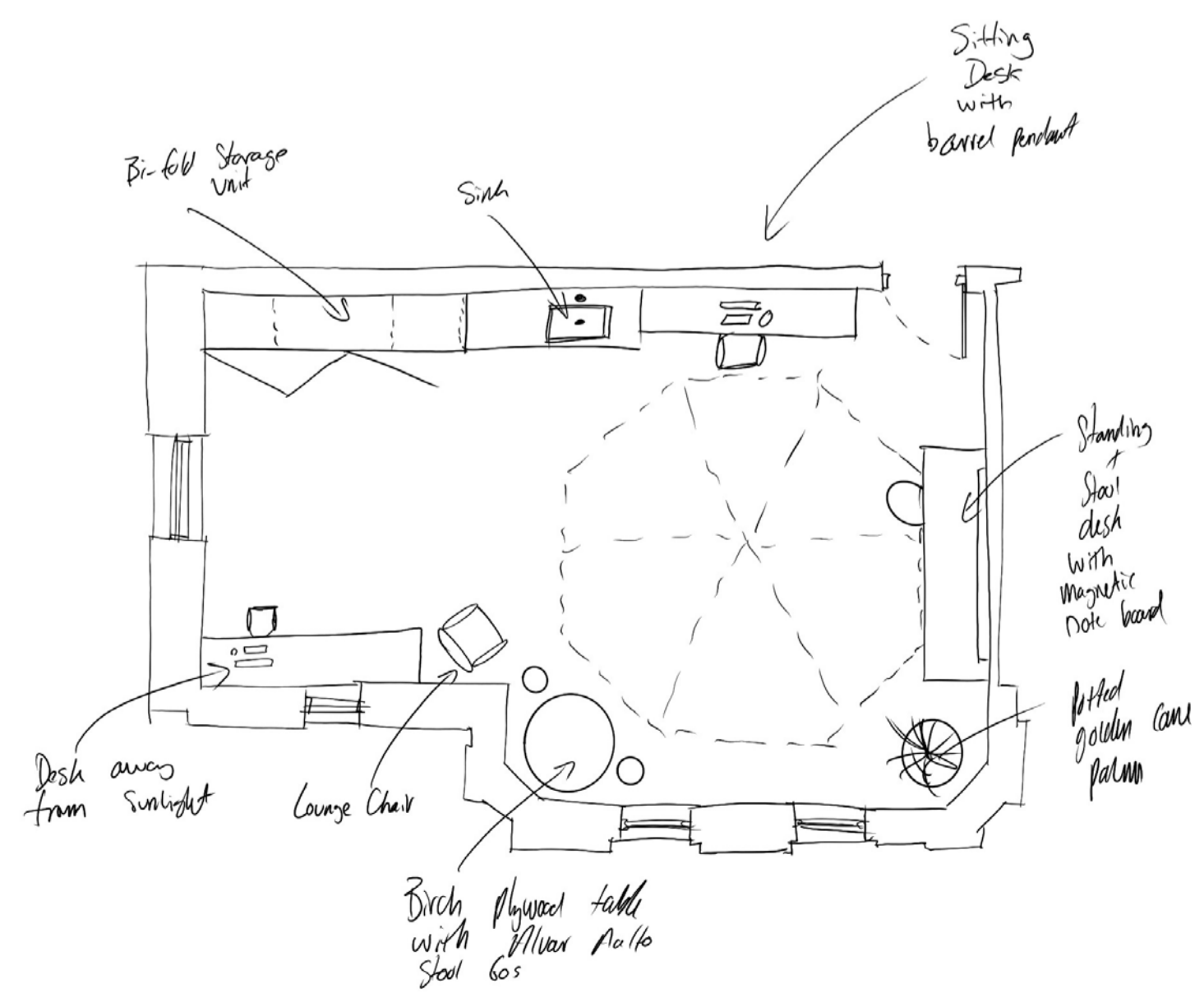
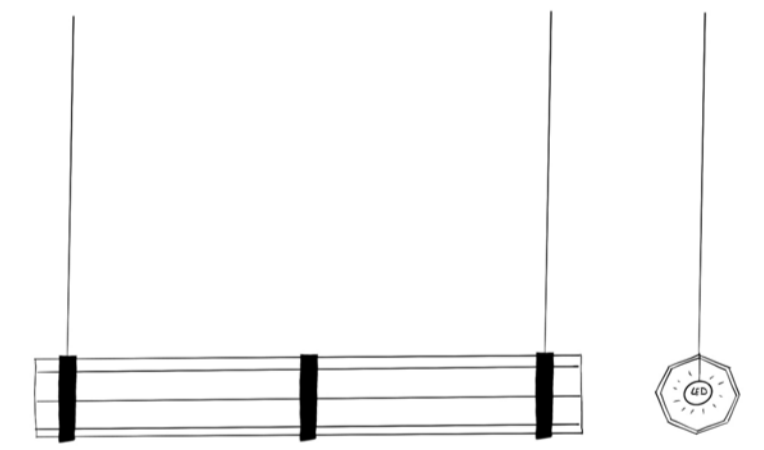


First floor

Located on the south side of the being and in an area of significance to the building's grade 2 listing, the space has been designed to complement and add contextual character.

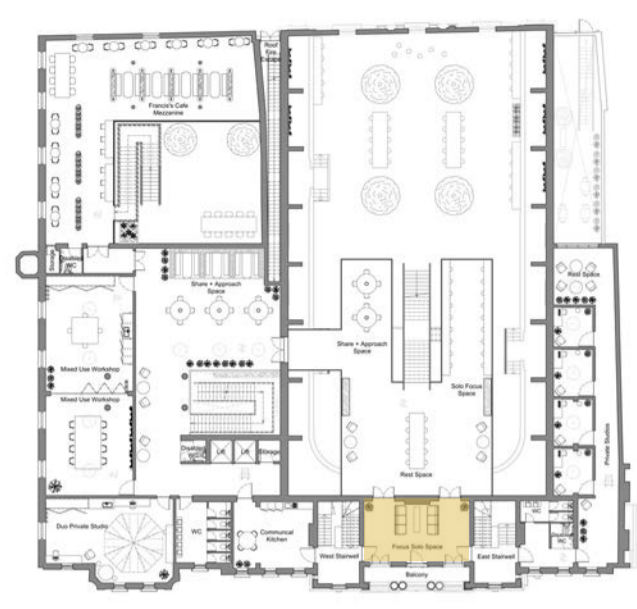
The bespoke storage unit and cabinetry provide ample secure storage for the occupant's belongings. A Fossso slate walnut surface top has an integrated sink and drink-making facilities.

Working spaces have been positioned to avoid direct sunlight and a total of four surface areas allow for movement when working. Sitting and standing working spaces have been provided and three bespoke designed pendants create a unique finish.



Scan here to view a 360 view of the space





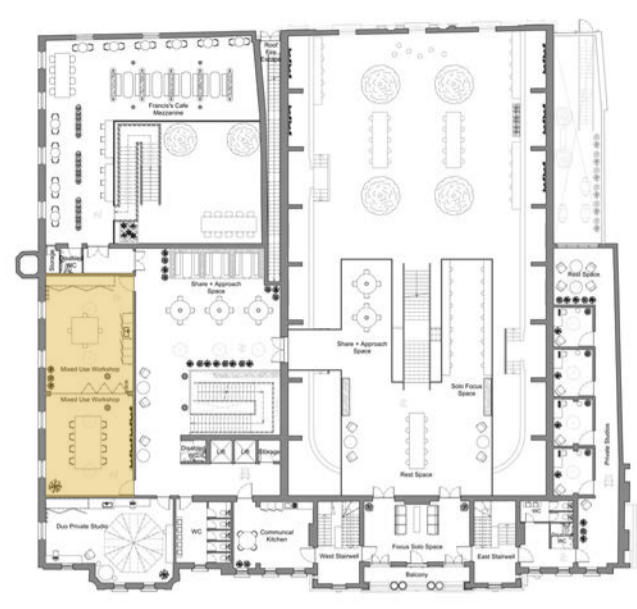
First floor

Located behind the pool hall mezzanine, this earthy bancha coloured break space acts as a transition zone to other parts of the first floor. Cast iron squares will be laser cut from the water tank which sat on the west side of the building and transformed into framed artwork which will sit either side of the space.

Bespoke wall mounted up and down lighters, of which the central body is 3d printed locally, will light up the south walls. Three bespoke pendant chandeliers will hang under each section of cornicing. These chandeliers are directly inspired by the grade 2 listed roof lantern on the south side of the building and the globes are also 3d printed locally using the same fermented sugar polymer.

Scan here to view a 360 view of the space





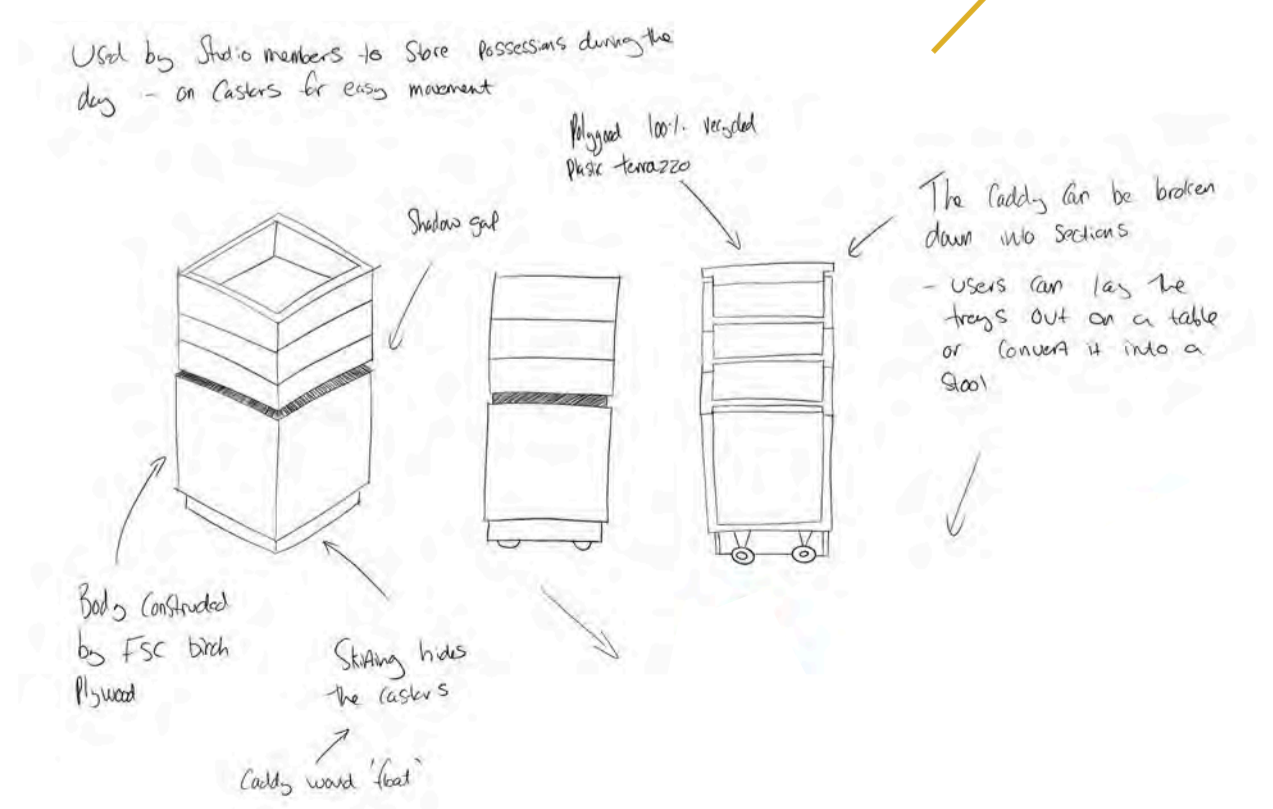
First floor

This mixed use, dynamic space can host a multitude of activities. The space is split into two areas. The first has a large surface which can be used for projects that require lots of table space and the addition of a Portuguese moss wall brings the outdoors in. The second half has a more hands on feel and includes a large square workbench, work-surface with integrated sink and bespoke storage unit which holds general equipment catering to a wide audience.

The interior can be split into two individual spaces by closing a five panelled, fluted glass, bi-fold room divider which runs on a track system. The large fluted glass panels undergo a laminating process to prevent shattering.

Directional spot lighting mounted on a suspended track makes changing the lighting simple when required. Alvar Aalto 64 barstools have been specified and are joined by a bespoke storage caddy which will be used across the whole building.

The storage caddy breaks down into separate pieces, trays can be spread out on a table and the lower portion can be used as a stool. The unit is mounted on four casters which is hidden by a skirt.



Scan here to view a 360 view of the space



HAGGERSTON STUDIOS

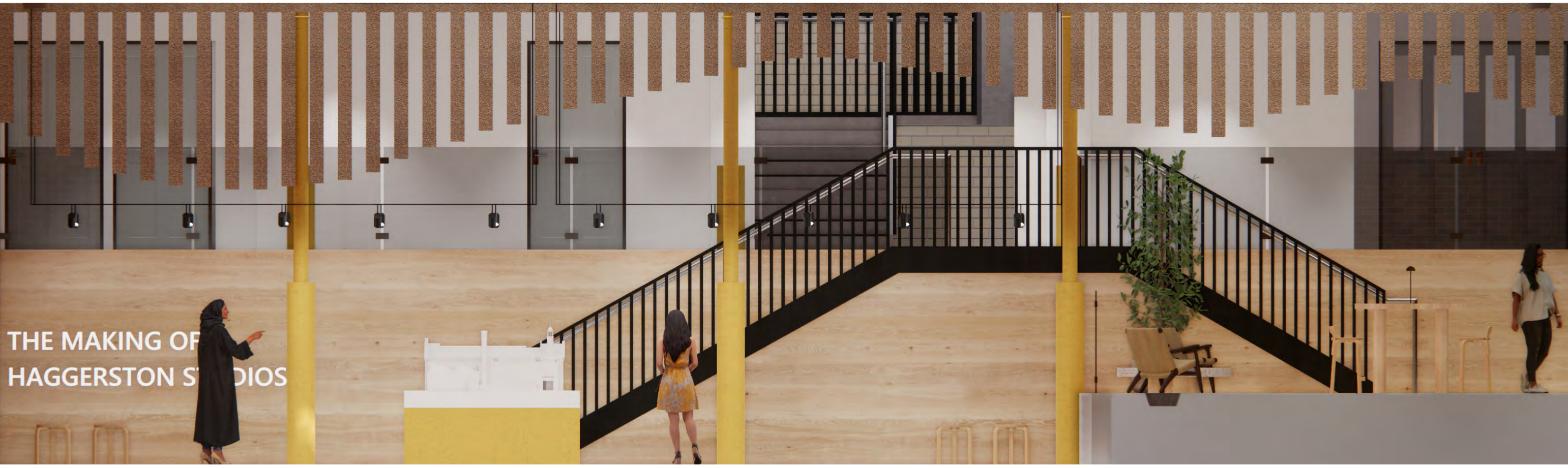
EXHIBITION HALL



Basement

Within the lower level of the basement, there will be a temporary exhibition space. The first exhibition in the space will be a presentation on the transformation from Haggerston Baths to Haggerston Studios. At the centre of the space will be a scale model of the previous site. Posters suspended from the ceiling will display photographs of the previous site and information about its history.

Wave-inspired acoustic ceiling installation that will hang at varying heights across the space. The ceiling will be made from acoustic foam, covered with Camira Music FHU04 which has fire ratings; EN 1021 – 1 (cigarette) EN 13501--1 Adhered Class B, s1, d0.



HAGGERSTON STUDIOS

SECTION BB

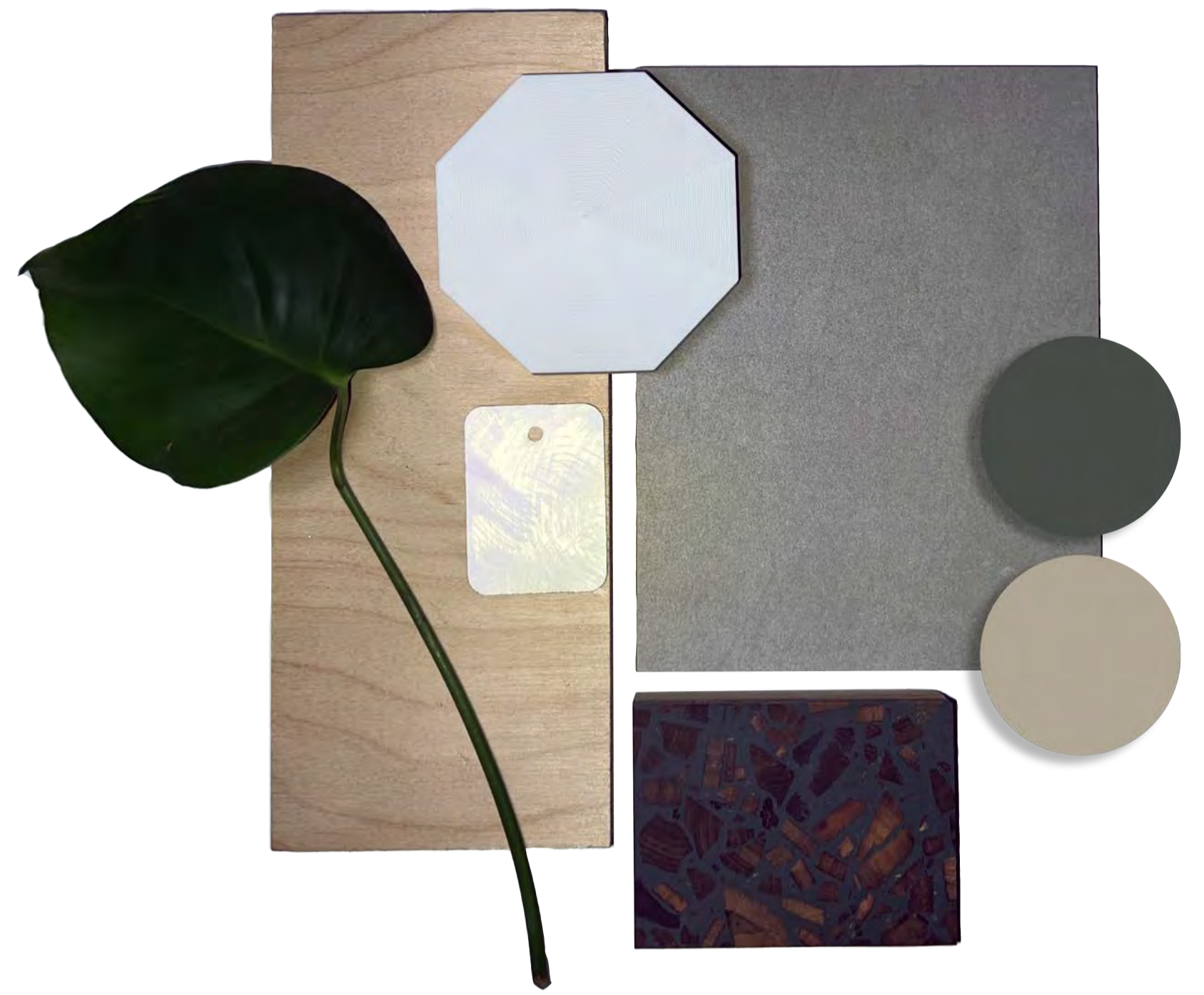


Scan here for the animation



MATERIALS

Duo Studio



- Fermented sugar polyester bespoke lighting
- Foresso slate grey/walnut terrazzo
- Brushed steel doors
- Birch plywood
- Phase grey concrete effect porcelain 597x597x9mm

Pool Hall



- Claybrook metro deco penn station tile 75mmx150mm, Dado 50x150mm, Skirting 150x160mm
- Thorpe oak herringbone 70x230x22mm, Luxury flooring company
- Stone super store, Urbahn media concrete effect porcelain tile 600x600x9mm
- Banker + wire stainless steel mesh
- Foresso no chip pewter
- Cemento 'will' colour c1w36, Smooth – 90% recycled stone
- Cast iron artwork
- Reclaimed glazed brick

Francis's Cafe



- Fermented sugar polyester bespoke lighting
- Foresso slate grey/walnut and pewter oak terrazzo
- Bacana charcoal corka cork acoustic ceiling panels 1225x190x7mm
- Camira hemp acre hwp19 booth upholstery
- Chepstow anique oak engineered – oiled 21x189x1800mm, 6mm wear layer
- Claybrook metro deco penn station 75x150mm tile
- Claybrook giardinetto bench 50x250mm tile
- Revenline crown dark ebony 11218 reliance veneer for booth seating

First Floor Refuge



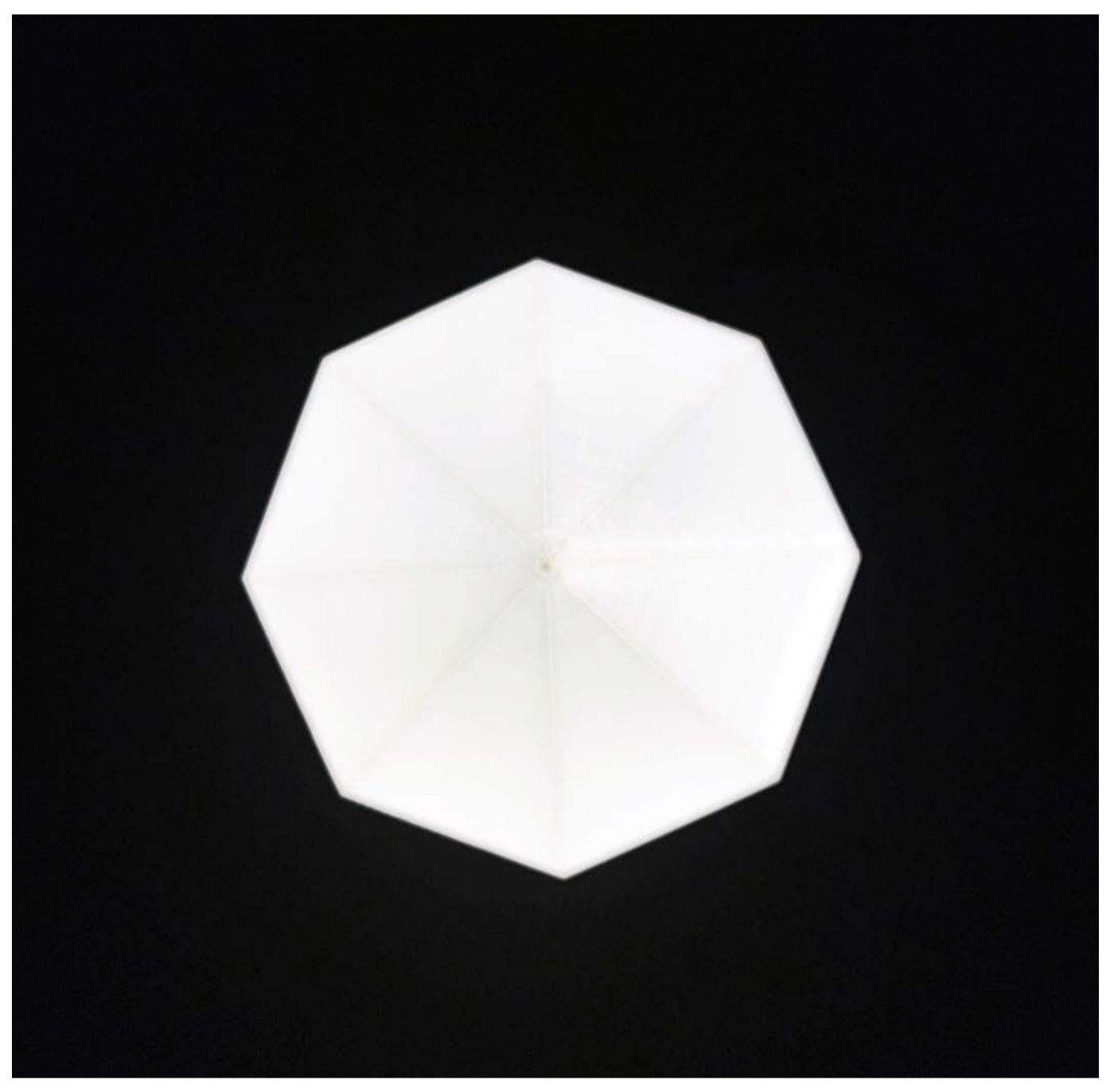
- Camira era memo Cse46
- Reclaimed Cast iron artwork
- Cemento 'will' colour c1w36, Smooth – 90% recycled stone
- Foresso slate grey/walnut terrazzo
- Thorpe oak herringbone 70x230x22mm, Luxury flooring company

BESPOKE LIGHTING PROTOTYPES/CONCEPTS

Fermented Sugar PLA Filament Lamp

CW1 prototype re-photographed for CW2
1:1 scale prototype
3D printed
E14 bulb fitting
Colour temperature ranges from 2200K-6500K and programmed to change depending on time of day and seasons

The shade will be 3D printed in one piece, 0.7 miles from site at FabPub - 3D Printing, Laser Cutting, Engraving & Design 22 Gossamer Gardens, London E2 9FN.



Fermented Sugar PLA Filament Pendant

1:1 scale prototype
3D printed
E27 bulb fitting
Colour temperature ranges from 2200K-6500K and programmed to change depending on time of day and seasons

