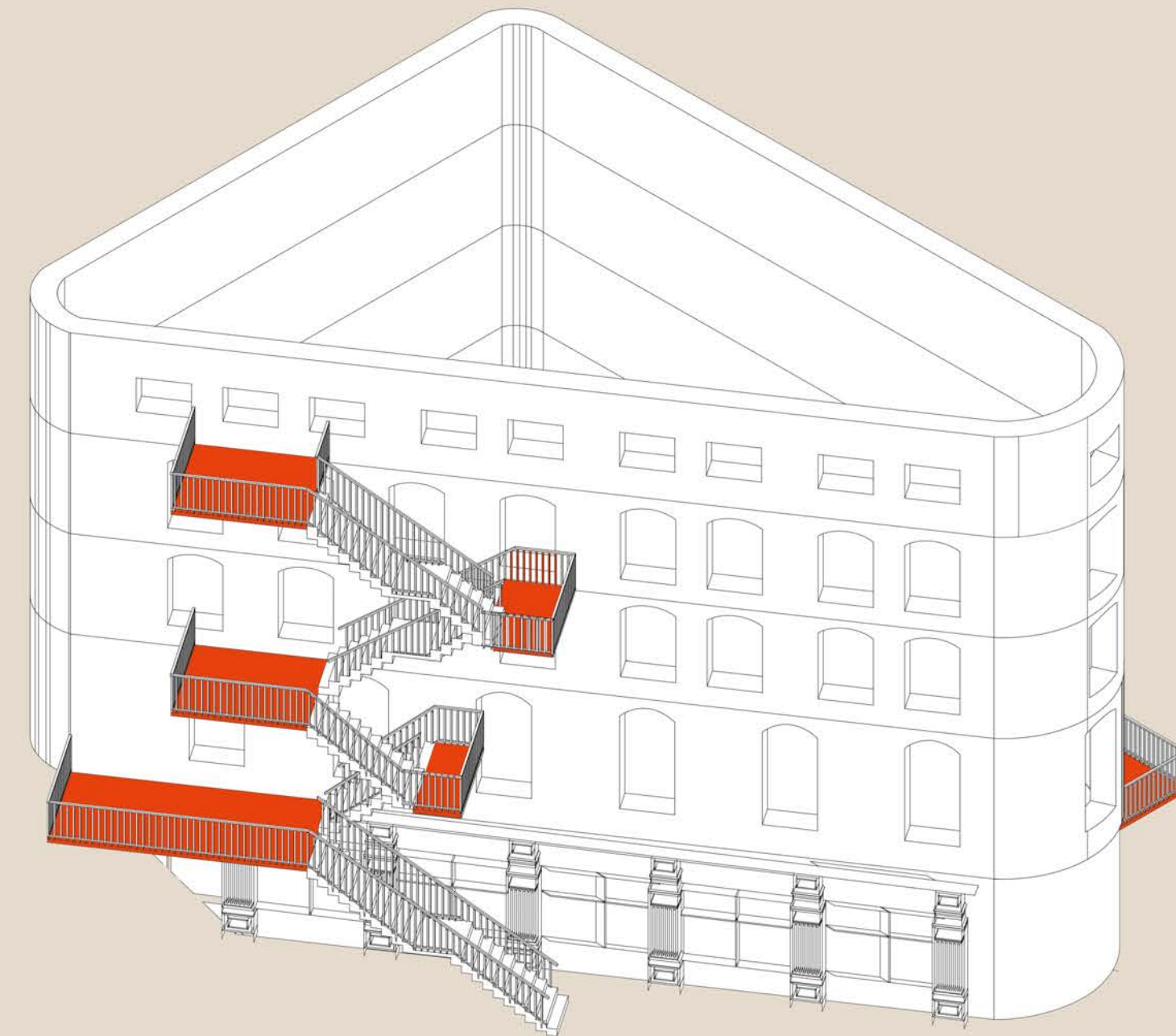


A BREATH OF FRESH AIR

Driving new ways of energy

181.Social.C24_02

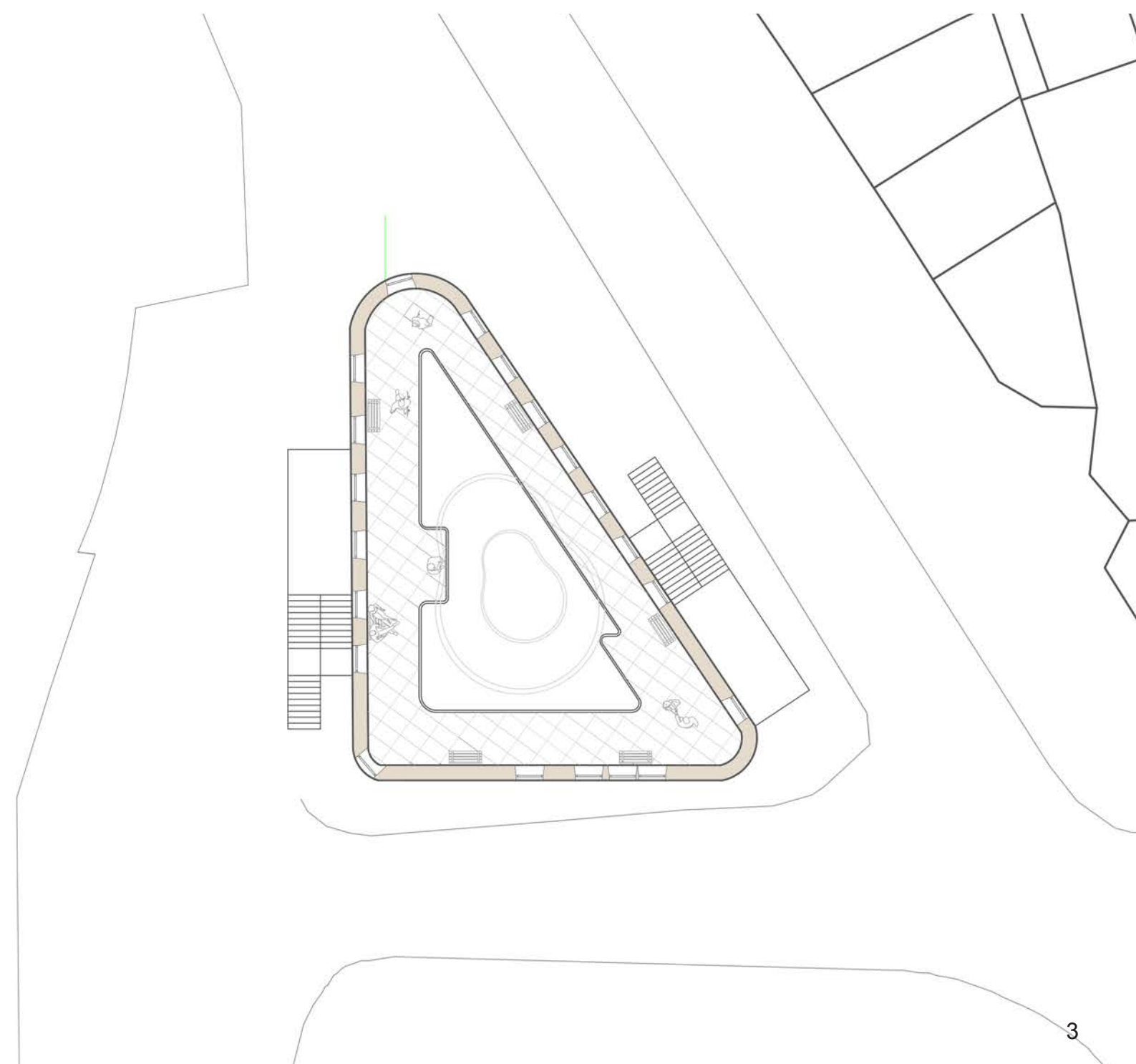
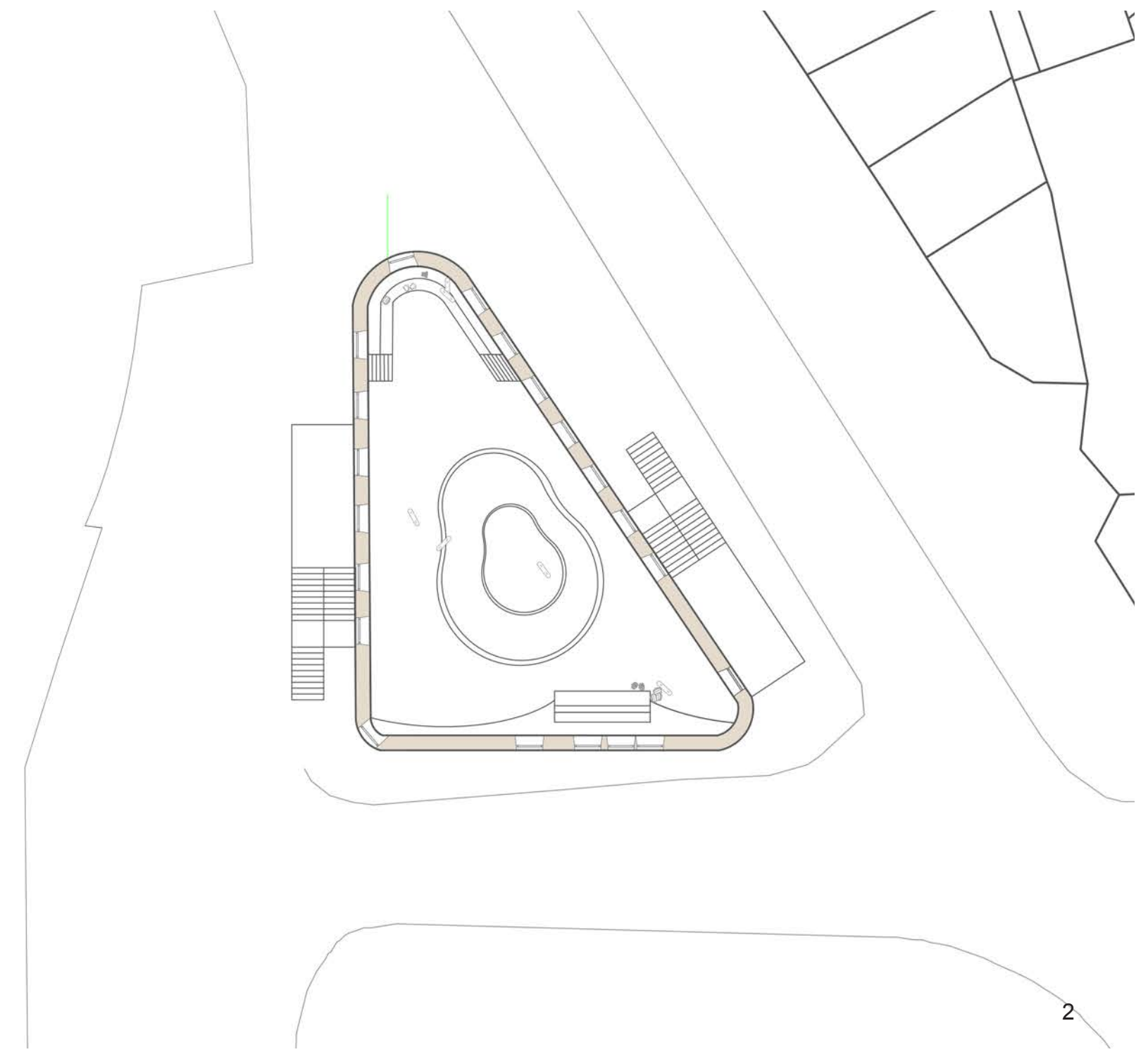
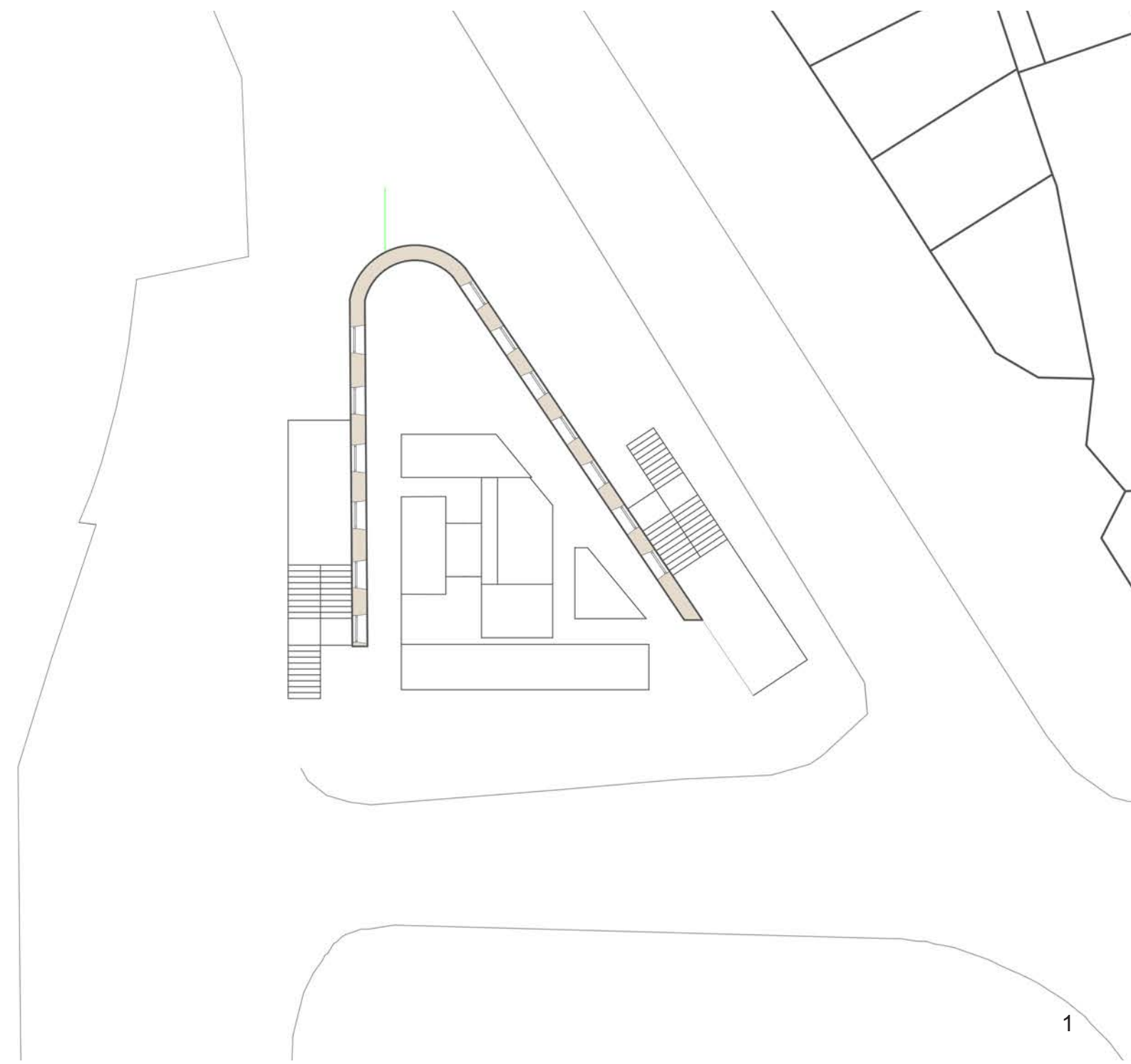


What are you looking at? Do you feel seen? The driving force of this project is the idea of 'Eyes on the street' by Jane Jacobs. The site will become a public space and its main attraction is a skate park that has a different take as it aims to have the eyes on the street but inside. The skate park starts in Bridge House instead of being an extension of the outside (inside out) and will have a café and clothing store, this way non-skaters can use the space. This project focuses on social justice as the Skateboarding

community is diverse and inclusive, with people from all walks of life coming together to share their love for the sport. It helps to fight criminality and discrimination amongst minority groups as connecting with like-minded individuals allows them to communicate troubles, insights and unravel hidden narratives that have been buried for far too long.

PLANS

showing programme of the skate park



- 1- Ground Floor Plan at 1:200 (Ramp Court)
- 2- First Floor Plan at 1:200 (Skating bowl and Curved Wall)
- 3- Second Floor at 1:200 (Balcony (viewpoint to the bowl))
- 4- Third Floor at 1:200 (Cafe and clothing store)

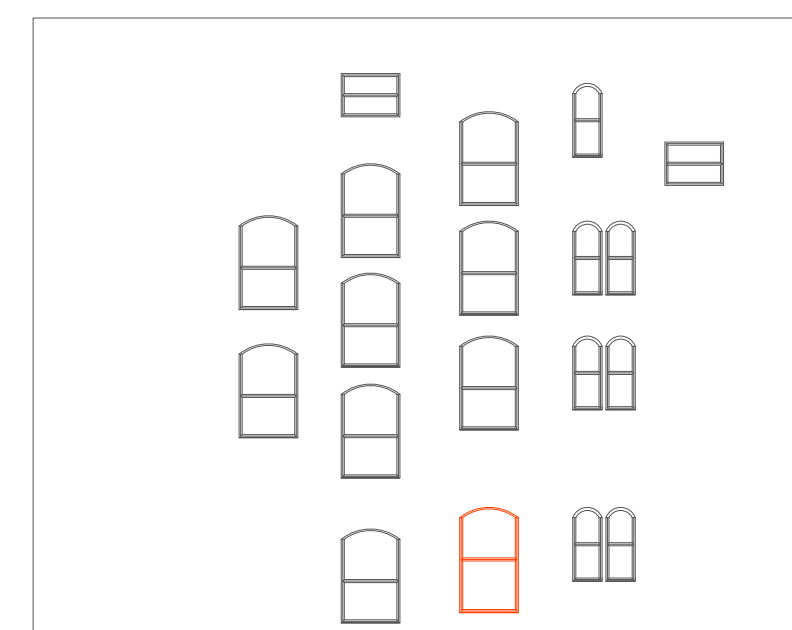
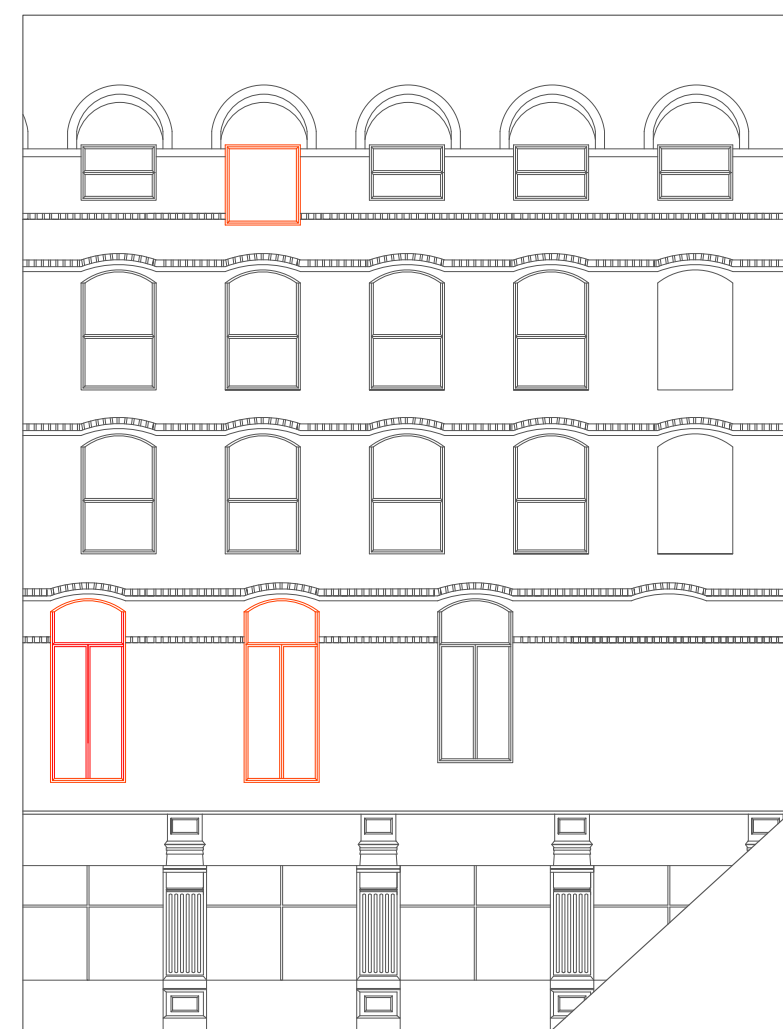
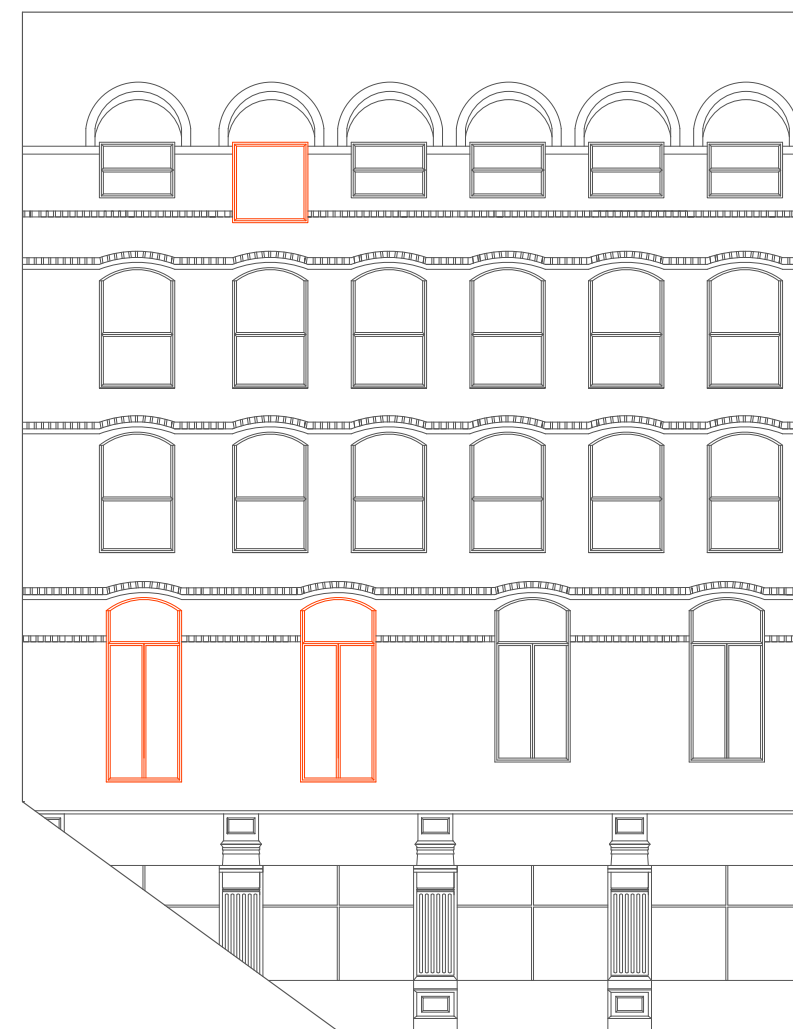
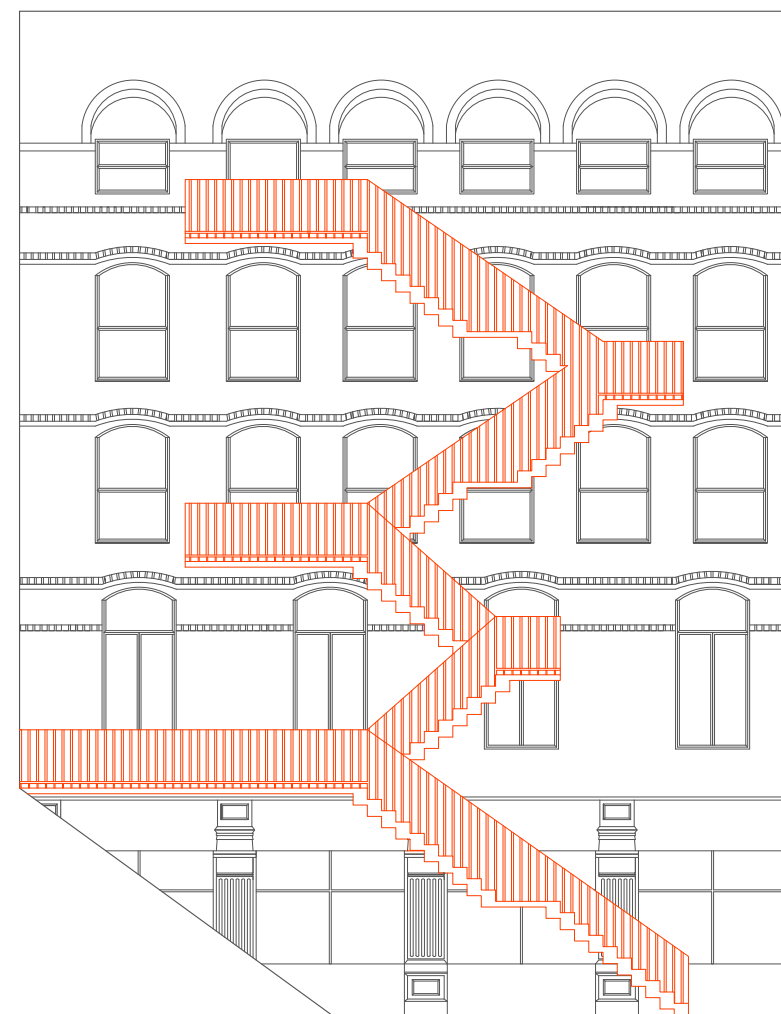
JANE JACOBS, 'eyes on the street' and the STAIRCASE

"There must be eyes upon the street, eyes belonging to those we might call the natural proprietors of the street. The buildings on a street equipped to handle strangers and to ensure the safety of both residents and strangers, must be oriented to the street."
-JANE JACOBS

Why are the 'eyes on the street' always positioned outside? What is happening inside those spaces? At times the 'varanda' is the little space that allows us to connect to the outside world. What if the balcony is the way to get to these spaces? ('Eyes on the street' but inside). Change the location of the staircase (inside out). The height of the windows were changed. This way users can get in the building easily without climbing.

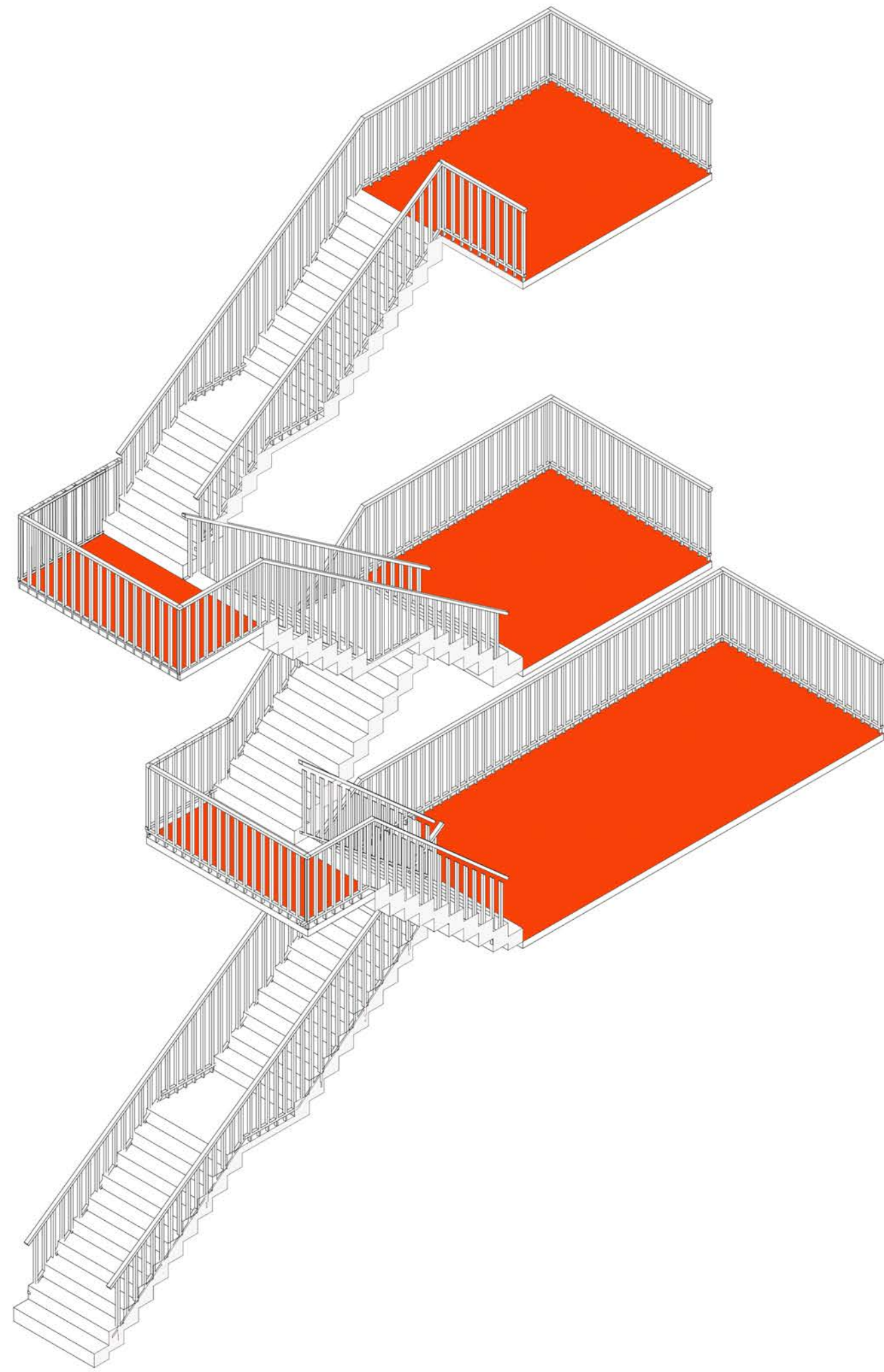


Long Section at 1:200

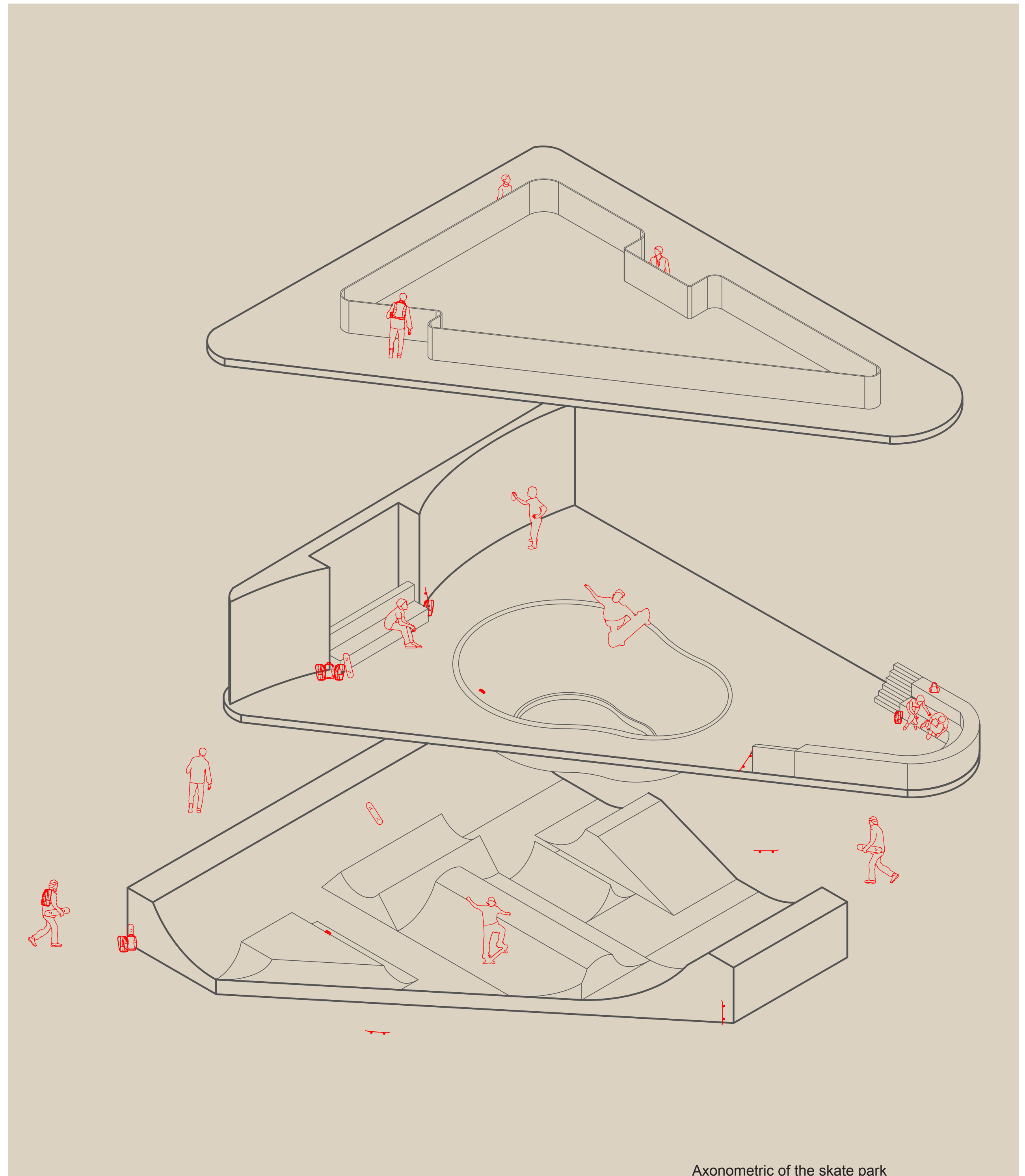


KEY MOVES

Main design changes



Proposed Staircase



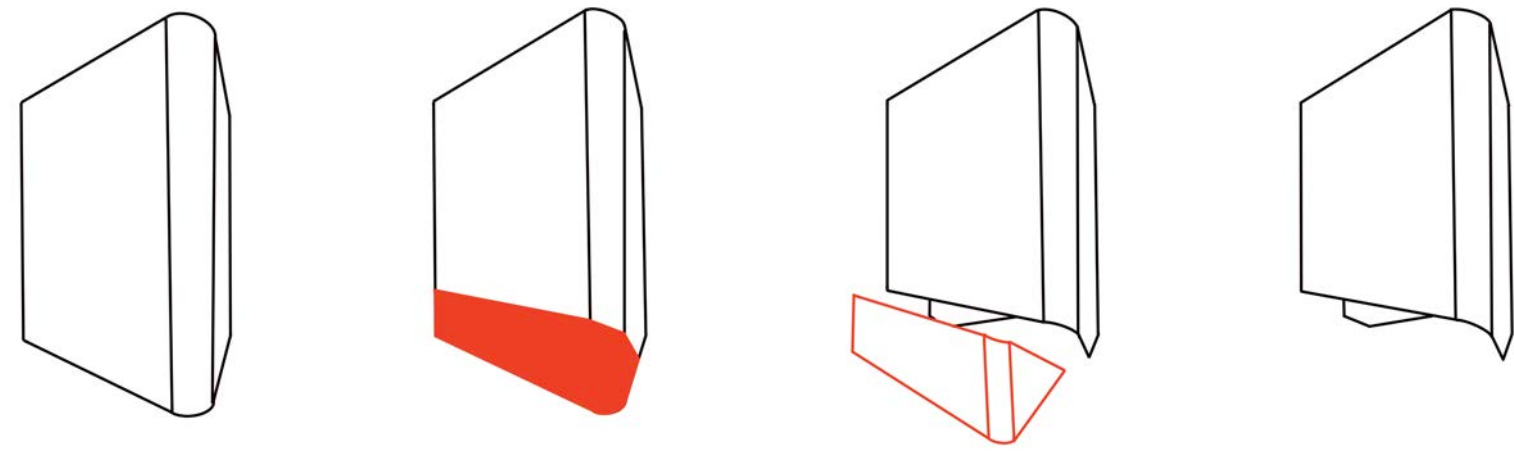
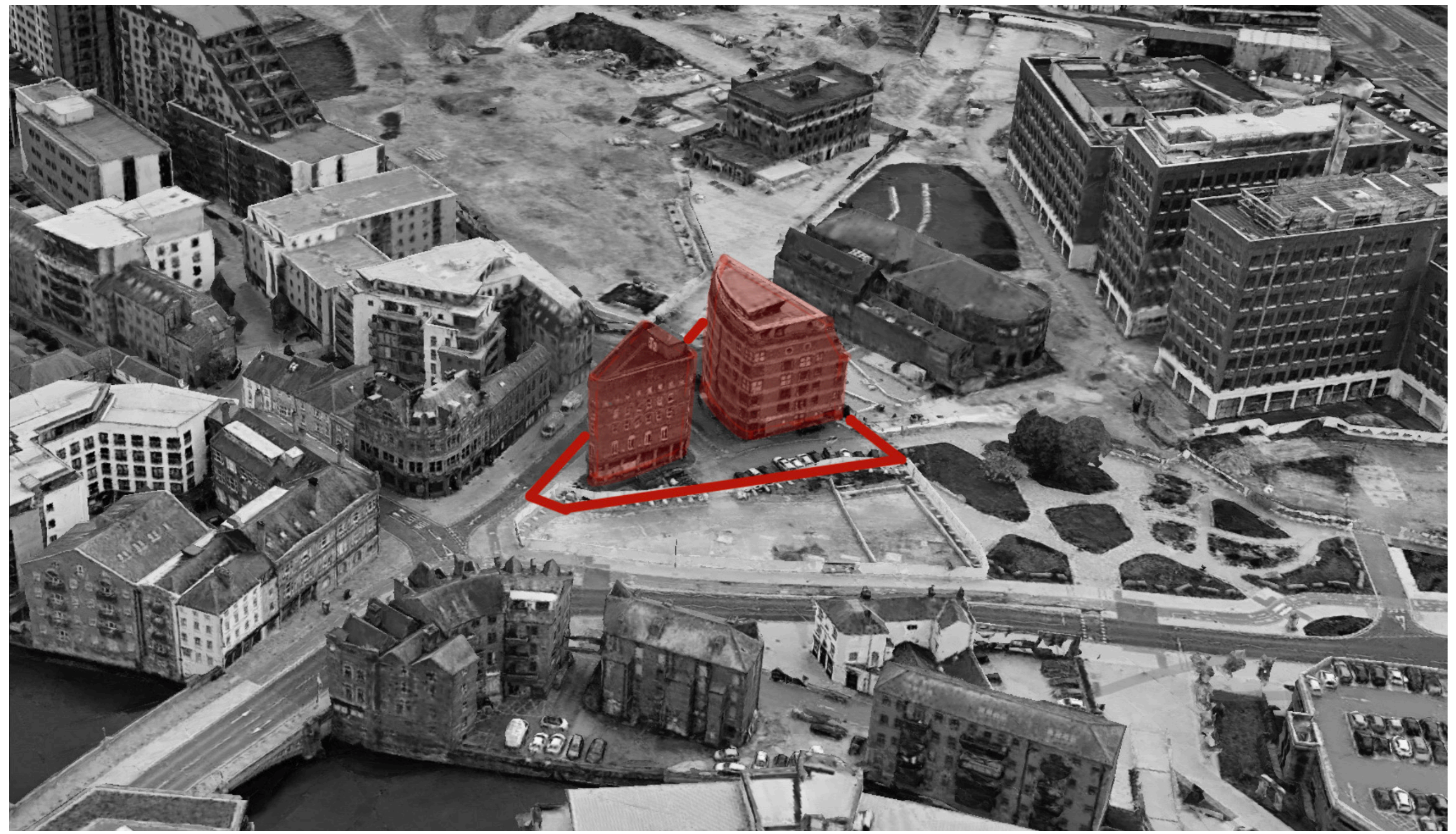
Axonometric of the skate park

THE SITE

Bridge House



Site plan at 1:500



A slice from the facade was removed and Bridge House appears to be a floating volume from the outside. Experiments made on a working model to test the idea.

