

# HOSTEL SAVOY

## "Plant and Rest"

This project proposes the transformation of the historic Savoy Cinema building in Sligo, Ireland, into a hostel combined with a horticultural school. Originally designed by W. J. Doherty and opened in 1932, the building is reimagined as a place for learning, community, and connection with nature. Responding to Ireland's frequent rainfall, the design creates an environment where people can engage with plants throughout the year while remaining sheltered from the weather.

The existing steel structure forms the organisational framework of the interior, while a new timber structure, derived from the initial concept model, reinforces the project's spatial strategy, creating a clear yet engaging spatial arrangement that is intuitive to navigate. Also inspired by the project's initial concept model, the interior unfolds as a sequence of interconnected spaces with varying ceiling heights, creating a rich and dynamic spatial experience. Visual connections, walkways, and carefully positioned voids link different zones, encouraging movement, interaction, and discovery while maintaining the distinct character of each space.

The south-facing orientation allows natural light to penetrate deep into the building, creating changing atmospheres throughout the day and supporting a variety of planting environments. A lot of greenery introduces colour, texture, and lively yet calming environment.

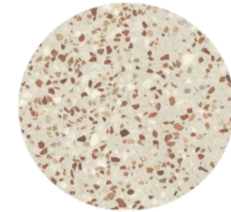
Together, these qualities create a vibrant and immersive environment that supports learning, cultivation, and social exchange, breathing new life into a historic building while fostering a strong sense of place.



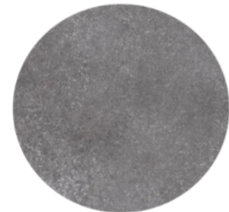
Glulam Timber



Corten Steel



Terrazzo



Stone

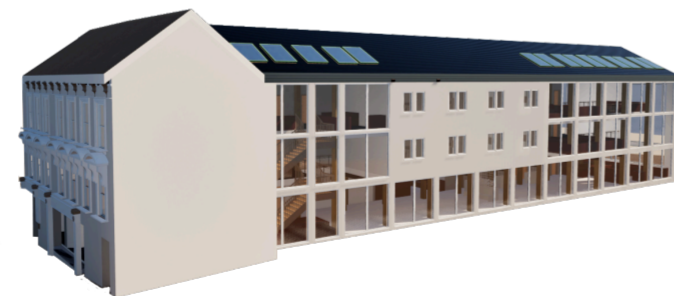


Plywood



### SITE ANALYSIS:

- NOISE
- WINDS
- SUN PATH
- SITE
- OTHER BUILDINGS
- GREENERY



NEW PROPOSED EXTERIOR OF THE BUILDING (South side)



EXISTING BUILDING (West side)

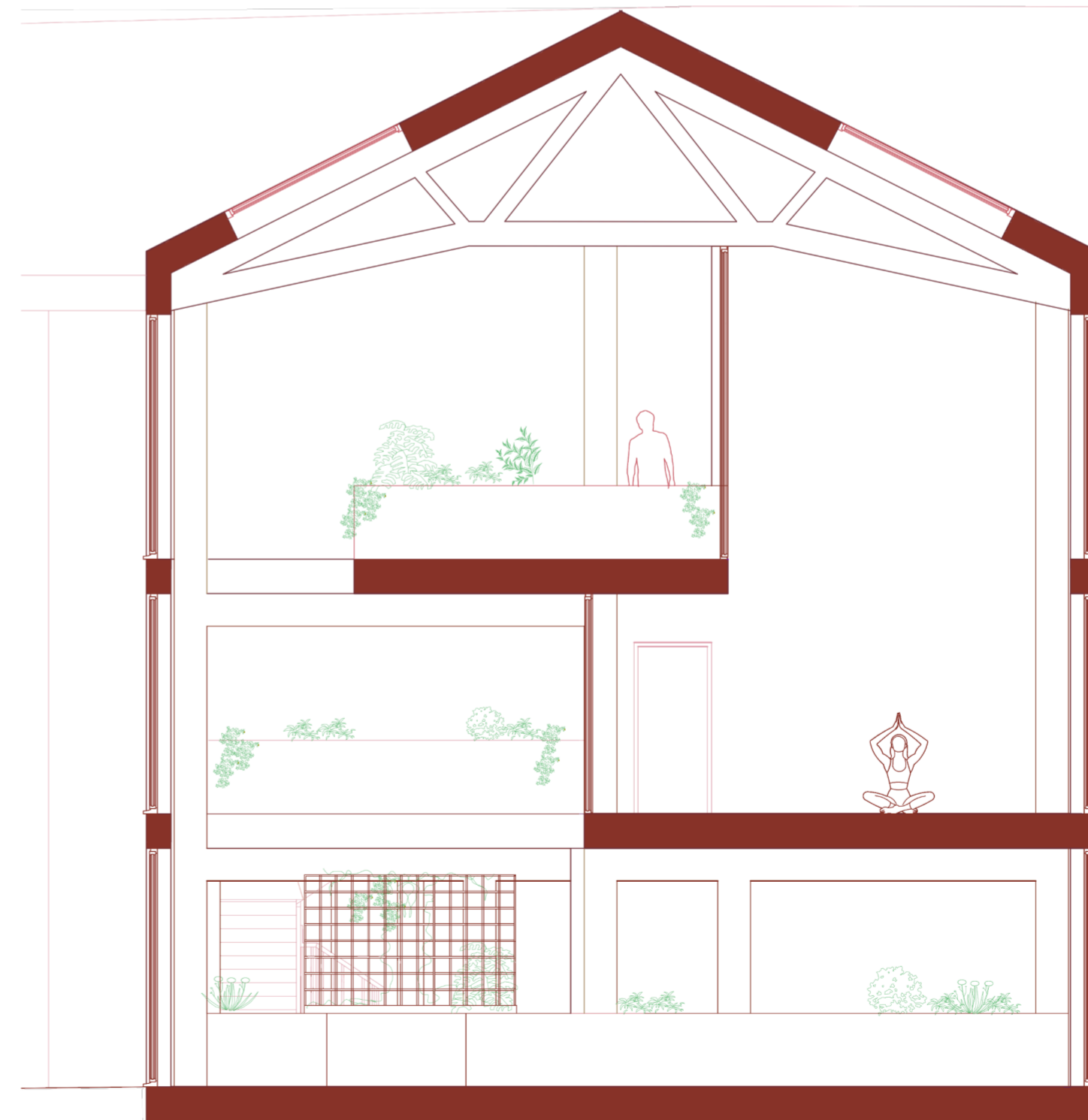
The original steel structure is reflected in the interior through the use of corten steel, creating a material connection between the old existing building and the new design interventions. It is a reference to the building's origins and heritage.



EXISTING BUILDING (South side)

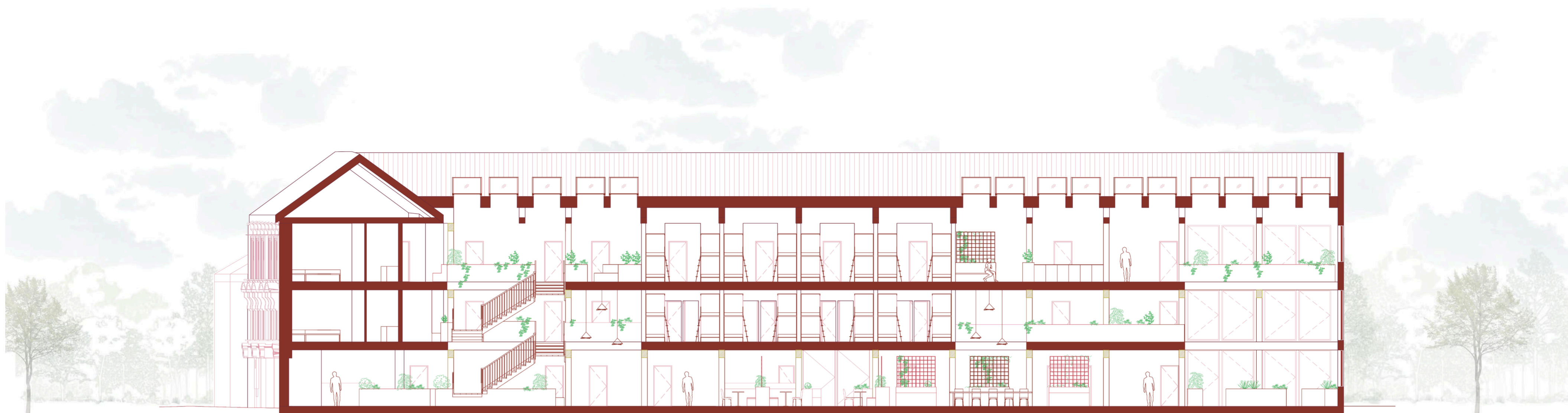


PERSPECTIVE SHOWING THE MAIN PLANTING SPACE ON THE GROUND FLOOR



CROSS SECTION CC

The design is inspired by my personal experience and interest in spending time outdoors, surrounded by plants. Given Ireland's frequent rainfall, I wanted to reinterpret this experience by creating an interior garden—a space where people can connect with nature while staying indoors. The vision for the hostel is to provide a welcoming and social environment where guests can meet, relax, and engage with plants. The "plus" aspect of the project is a garden/horticultural school, offering opportunities for visitors to learn about plant care and even try planting themselves.

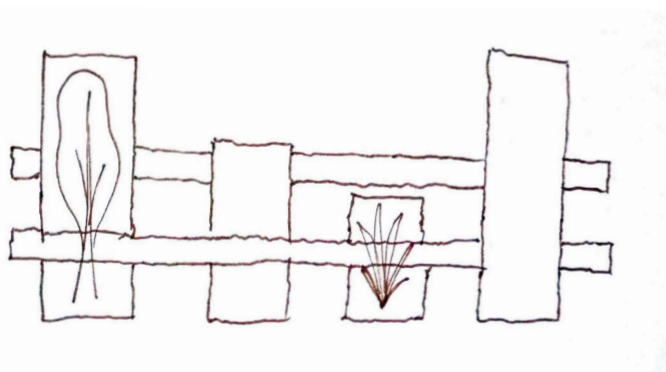


LONG SECTION AA

The design is influenced by my initial concept model, aiming to create a space that is both simple and visually engaging.

The larger timber pieces reminded me of double-height spaces, while the timber sticks suggested moments of connection. The gaps between them reminded me of voids.

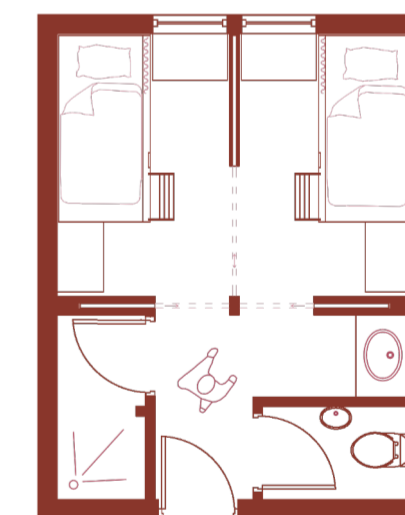
When looking at the concept model, I was inspired to design a space composed of distinct zones with varying ceiling heights, connected in multiple ways (visually, walkways), and enhanced by carefully placed voids.



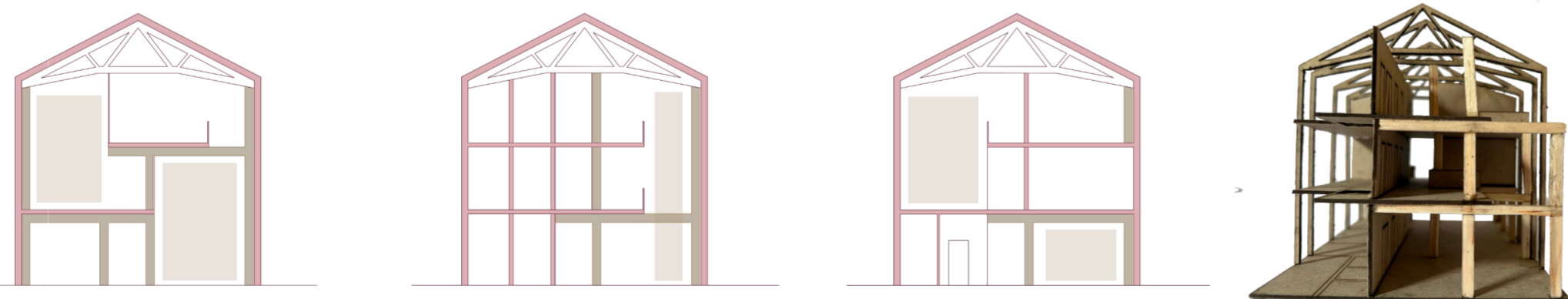
Since my plus function is a horticultural school, I wanted to design variety of zones that offer diverse lighting and spatial qualities because different plants require different conditions. Some areas provide direct sunlight (South side), while others are more shaded (North side), ensuring suitable conditions for a wide range of plant species.



PERSPECTIVE SHOWING THE GUEST ROOM



PLAN AND CROSS SECTION



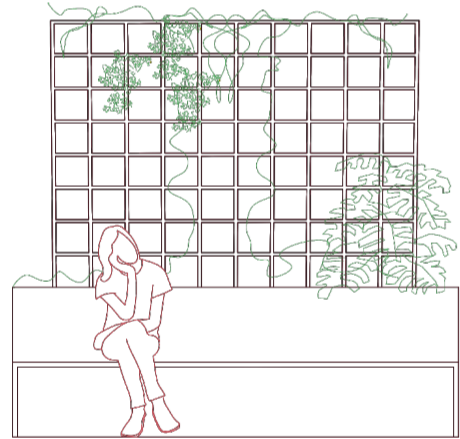
THREE SIMPLE SECTIONS AND ONE PHOTO OF A PHYSICAL MODEL SHOWING THE EXISTING STEEL STRUCTURE AND THE NEW PROPOSED TIMBER STRUCTURE - Also inspired by this concept model.

The individual rooms are designed to provide a high level of privacy and comfort. Each room is ensuite, with the toilet and shower separated to allow for greater efficiency and ease of use. The bunk beds are designed with timber side panels and curtains, creating a sense of enclosure and personal space that helps guests feel safe, secure, and comfortable while sleeping.

There are four very similar room types available. The first room type is a standard room designed for four people. The second room type accommodates up to four people and can be divided into two separate rooms for two people each. The third room type also sleeps four people, but it can be connected to neighbouring rooms, making it ideal for larger groups. Up to four rooms can be joined together to create accommodation for as many as sixteen guests. The fourth room type is more spacious and shares a bathroom with an adjacent room.



PERSPECTIVE SHOWING PLANTING/RELAXING SPACE WITH A VOID ON THE SECOND FLOOR ON THE NORTH SIDE



I designed this planter, that is also a room divider and seating. It is used mainly to enhance a boundary between two spaces (for example: toilets and a workshop space on the ground floor).



CROSS SECTION BB

The interior is organized into a series of distinct zones, connected through visual relationships that encourage movement and interaction.

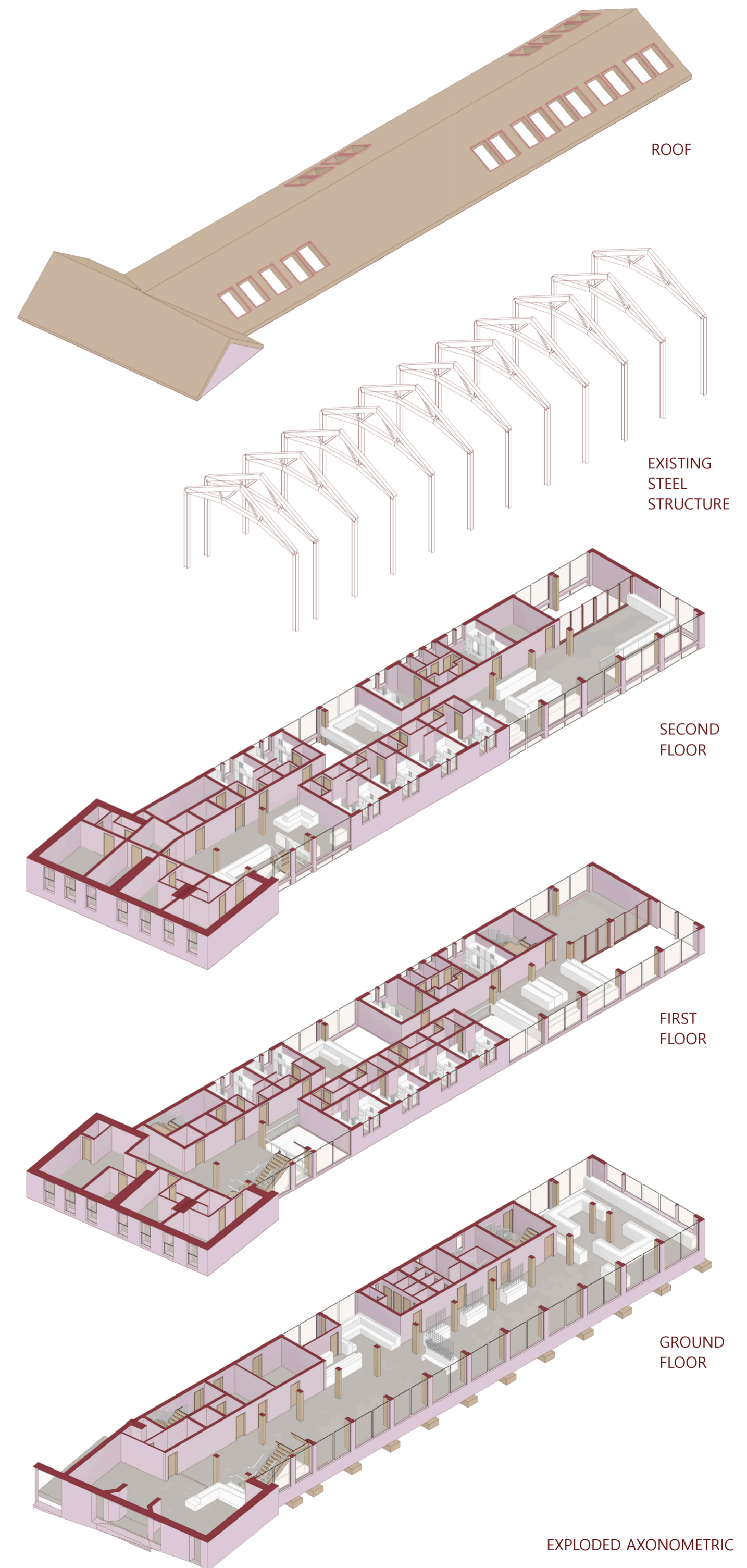
The spatial organisation establishes a clear hierarchy, with more public and communal functions located on the lower floors, and quieter, more intimate guest accommodation positioned above.

A key aspect of the design is a reuse of the existing steel structure, which helps organize the building. The interior follows a clear rhythm and sense of predictability, with rooms organized in a logical and consistent way.

This is complemented by the introduction of a new timber structure, also inspired by the concept model, adding warmth and contrast to the space. These timber columns help with navigating the space.

Voids are strategically placed throughout the building to bring natural light into darker areas and improve the overall quality of light within the interior.

Planting zones are integrated on every floor, providing calming spaces where people can relax and recharge when needed.



ROOF

EXISTING STEEL STRUCTURE

SECOND FLOOR

FIRST FLOOR

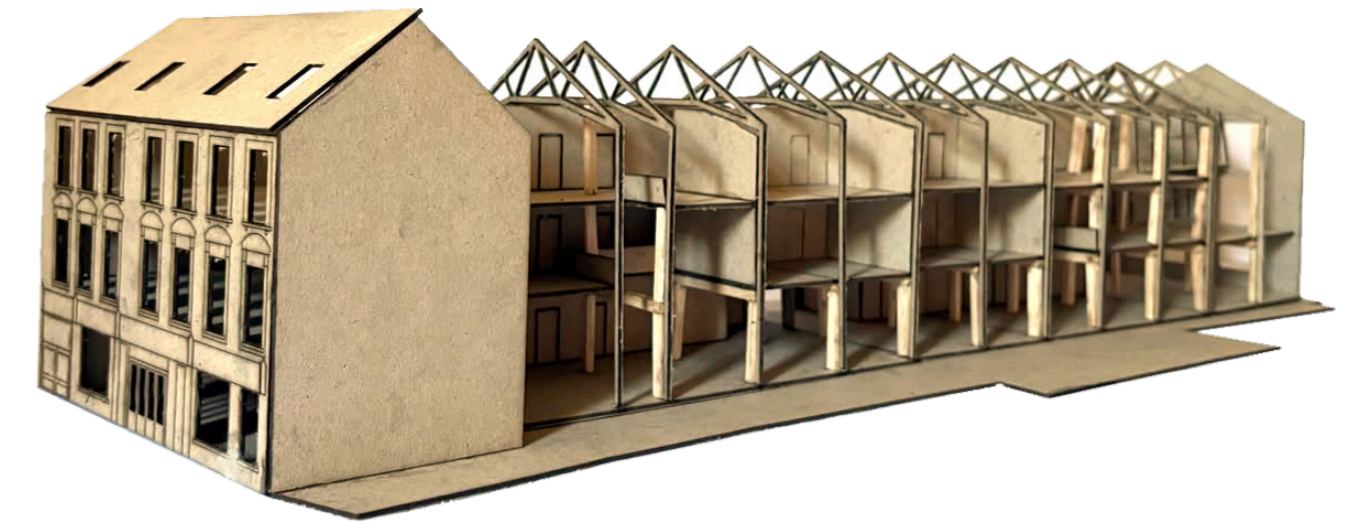
GROUND FLOOR

EXPLODED AXONOMETRIC

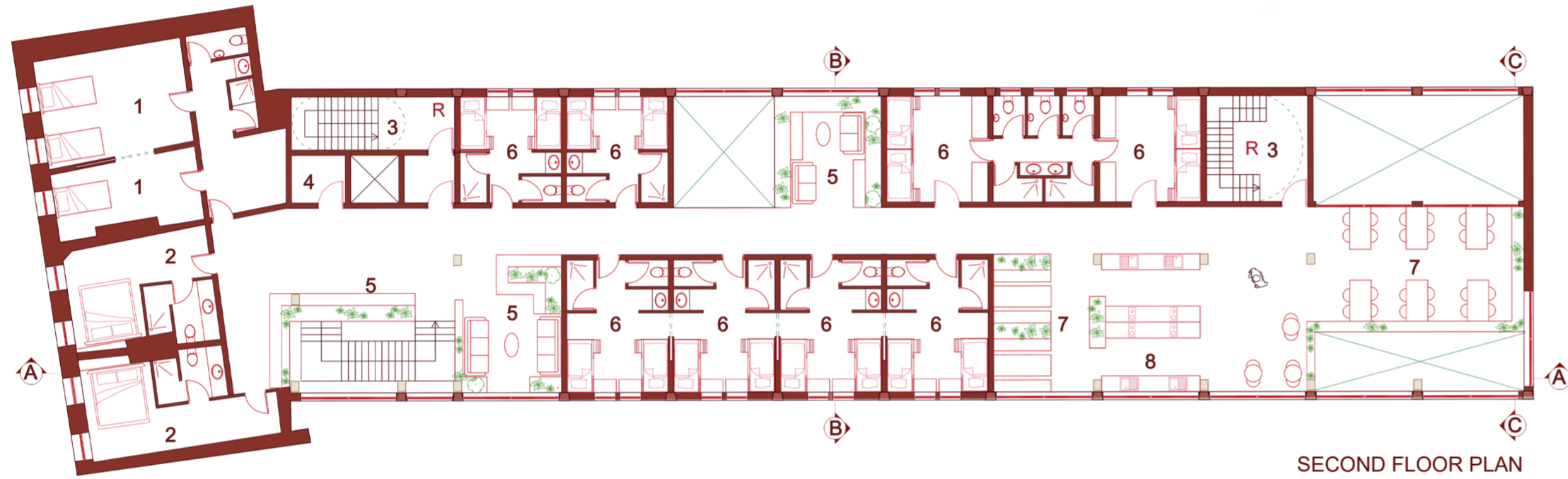


HAND SKETCHED VIEW OF THE MULTIPURPOSE ROOM AND ITS DIFFERENT USES

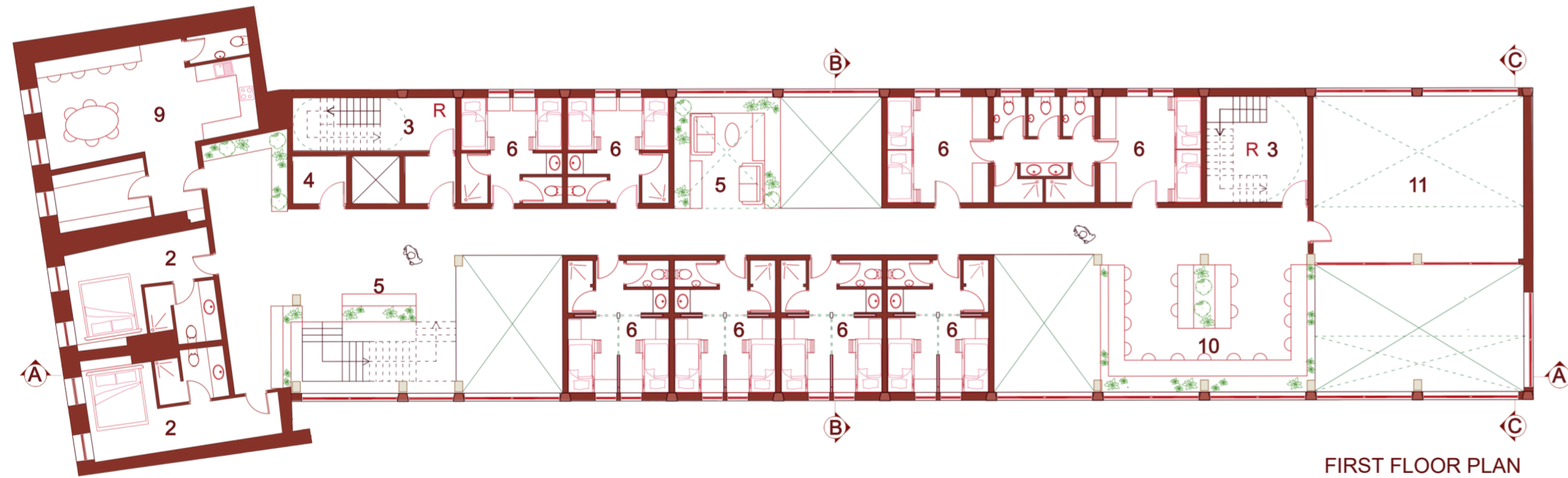
This multipurpose room can be used in many ways. As a place for exercising, meetings, as a cinema, etc.



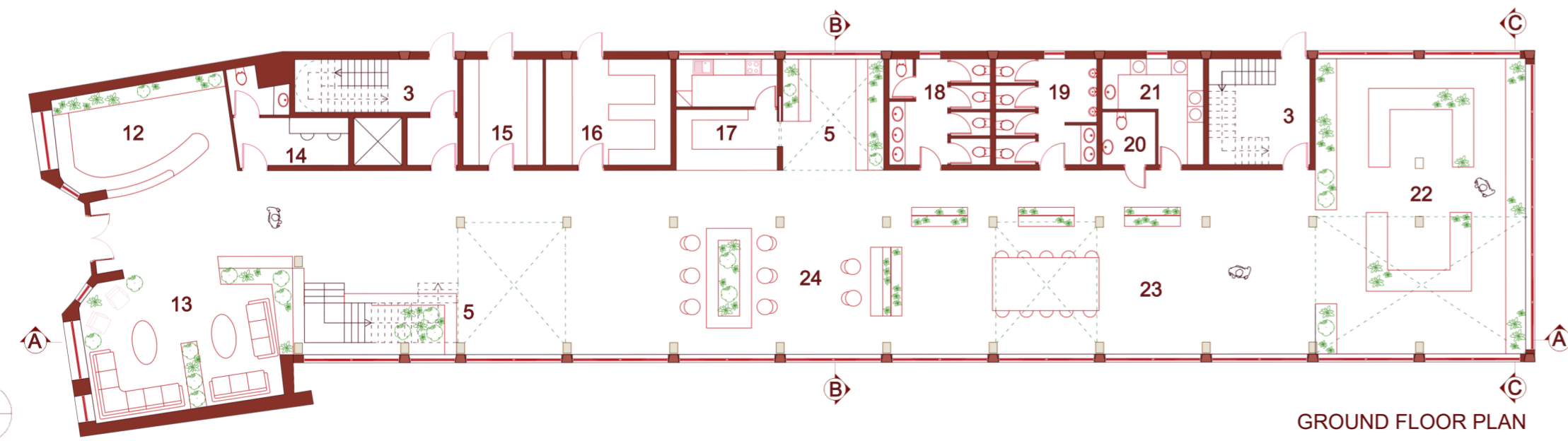
PHYSICAL MODEL OF THE HOSTEL



SECOND FLOOR PLAN



FIRST FLOOR PLAN



GROUND FLOOR PLAN

KEY:

- 1. Staff single/double rooms
- 2. Double rooms for guests
- 3. Escape staircases
- 4. Storage
- 5. Planting/ Relaxing zones
- 6. Shared rooms for guests
- 7. Dining space
- 8. Shared kitchen for guests
- 9. Staff room
- kitchen, changing room
- 10. Working space
- 11. Multipurpose room
- 12. Reception
- 13. Lounge
- 14. Staff office
- 15. Bags and bikes storage
- 16. Laundry
- 17. Café + Kitchen
- 18. Women toilets
- 19. Men toilets
- 20. Accessible toilet
- 21. Laundry for guests
- 22. Main planting space
- 23. Workshop space
- 24. Seating space
- R = Area of Refuge



THE MODEL IS BUILT IN SECTIONS TO CLEARLY ILLUSTRATE ALL OF THE INTERESTING ZONES WITH VOIDS AND DIFFERENT CEILING HEIGHTS

Biophilic design was a key principle throughout the project, fostering a stronger connection between occupants and nature. By integrating natural elements, greenery, and daylight into the interior environment, the design promotes well-being, reduces stress, and creates a healthier and more engaging living experience.

To support the planting scheme and improve the building's sustainability, a rainwater harvesting system was incorporated. Given Ireland's high rainfall levels, collected rainwater can be reused for irrigation, reducing potable water consumption and enhancing overall water efficiency within the hostel.



SOME EXAMPLES OF IRISH NATIVE PLANT SPECIES