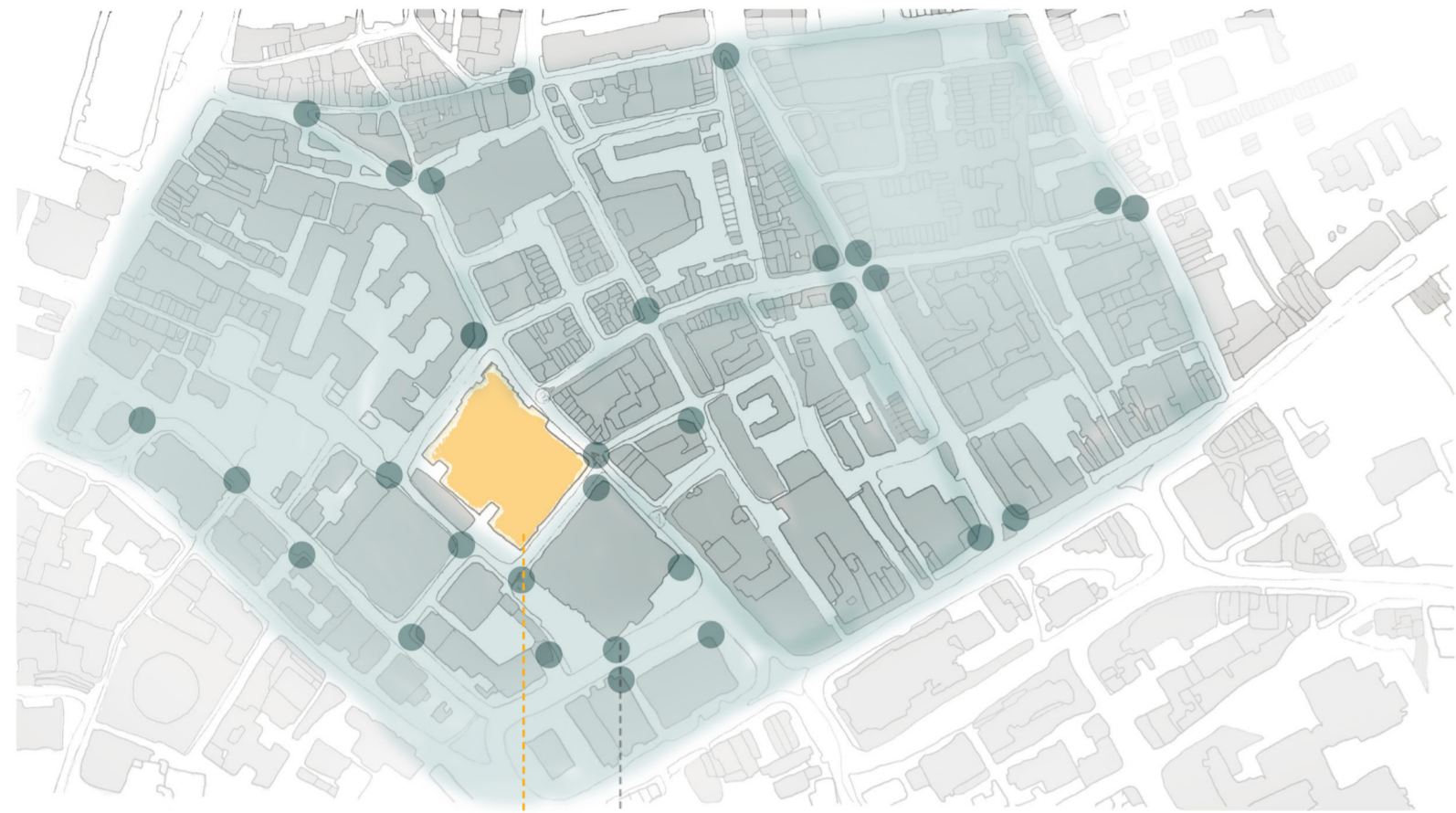


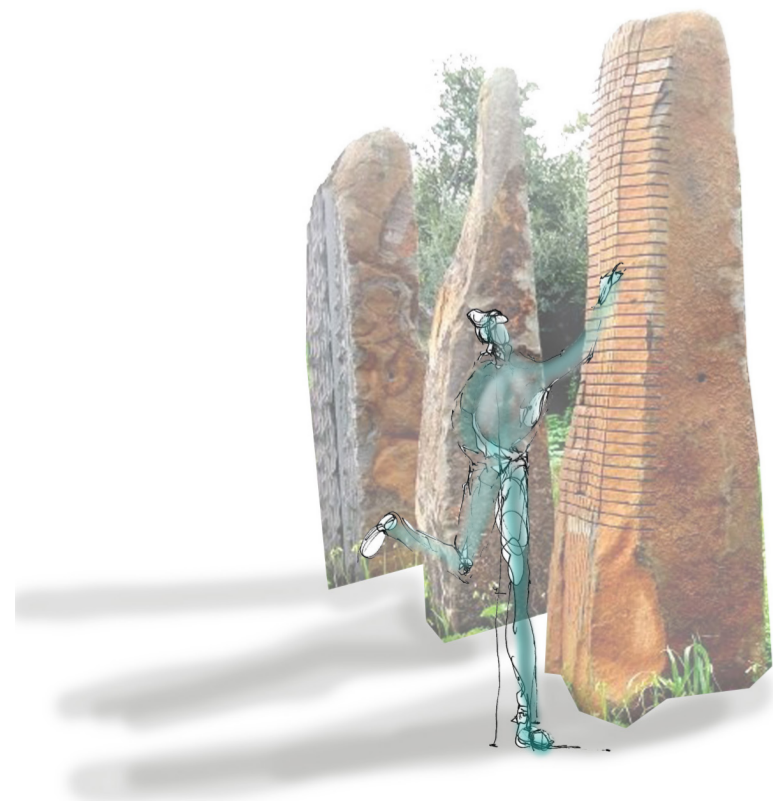
RECONNECT

A start up business which influences the community and inspires people to experience the relationship with one another differently.



A district to reconnect with home

Replacing the visual signage in the area with singing stones to create a signature and an element which will make people remember they are home.



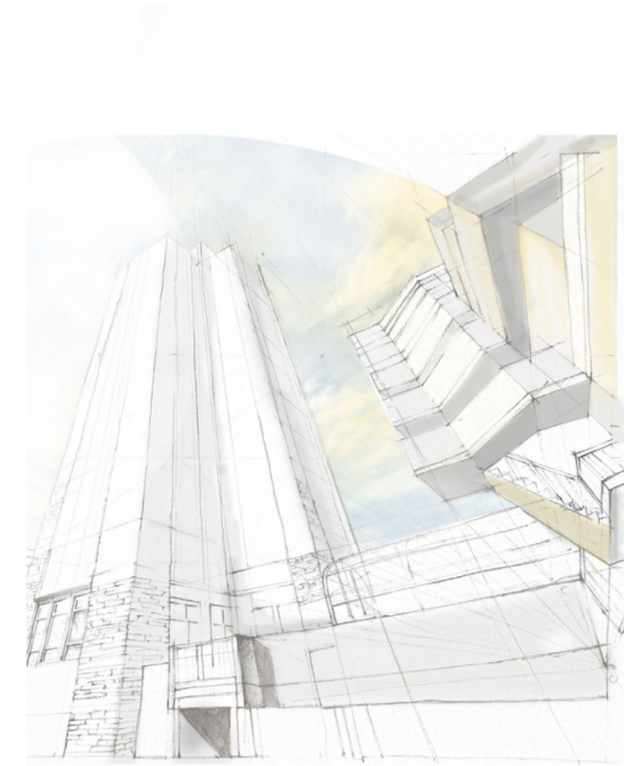
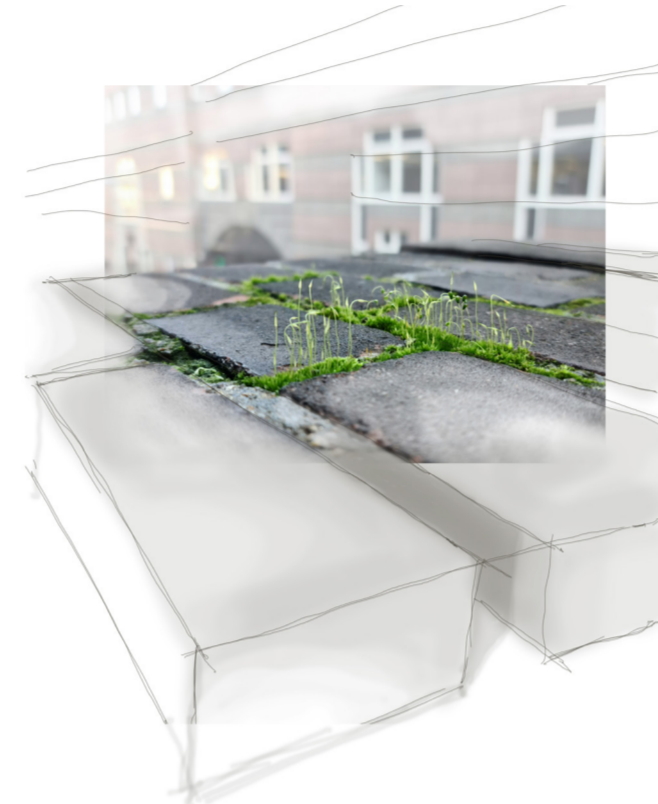
A space to reconnect with ourselves

Relaxation chambers are placed in the unused car park. They can be used by people to come and relax, to escape the worries from day to day life and to reconnect with themselves.



The concept

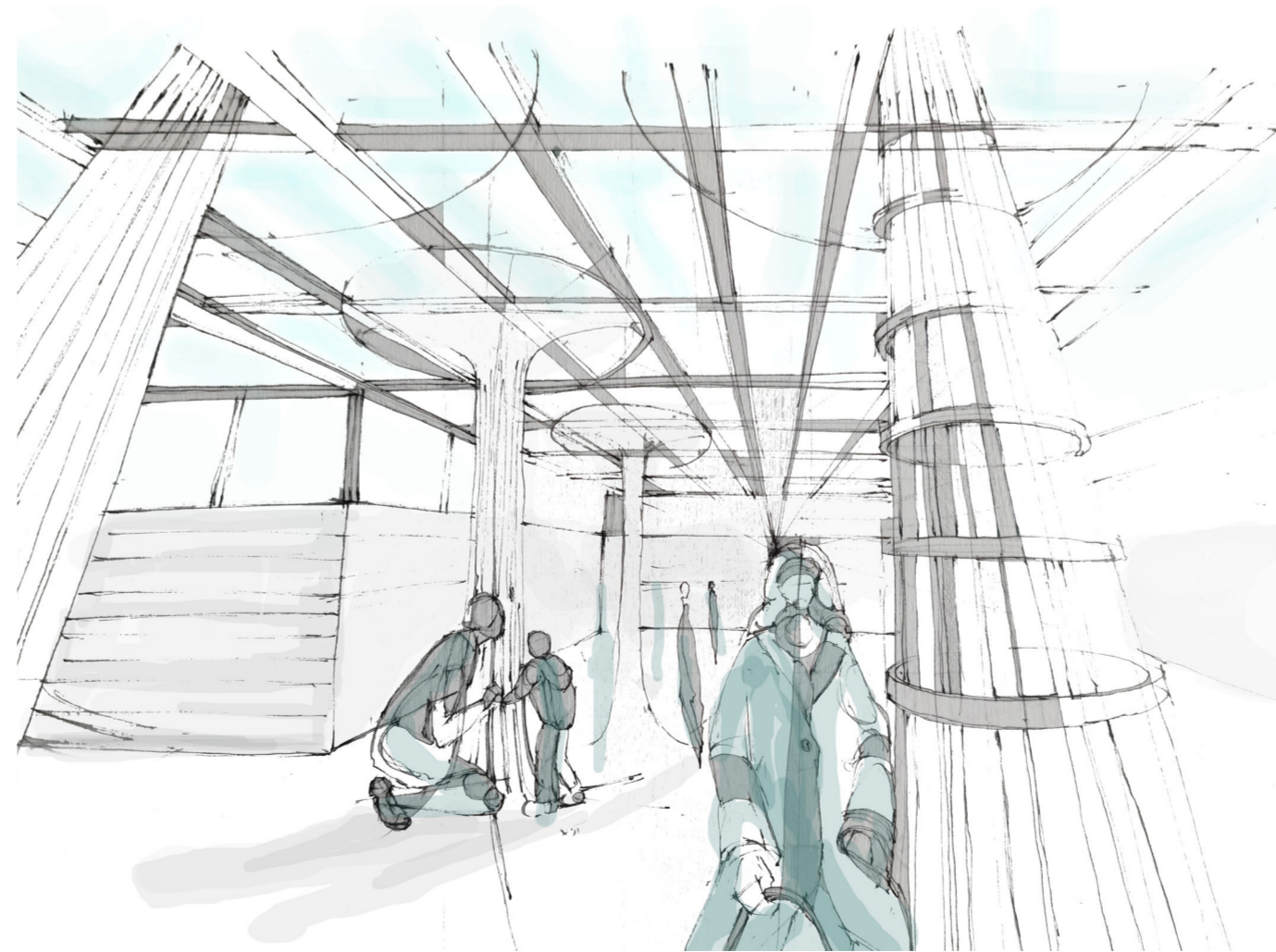
The lived history showed us testimonials of how broken and lost people were after the war. This proves, in a way, the concept behind the brutalist style of the building. Made from cold and stark materials like concrete and engineering brick, the site seems unpleasant. However, looking closely we understand that those hard materials had a purpose which is to protect life. Over the time, the materials blended with nature bringing the facade of the building to life. The concept of the proposed design is to use sensory design to reconnect two communities with each other and with themselves. The aim is to respect the story of the actual building and to use the start up business as a connection tool which will transform the site from a boarder into a bridge. With sensory design, people will be challenged to feel the space differently and forget about the things that tears them apart.



The design highlights the relationship we have with the vegetation surrounding us. Singing plants and bioluminescent leaves will be used in the project to inspire people to reconnect and feel the relationship they have with the garden and how their presence influences them by listening to the change of pattern in the plant's songs.

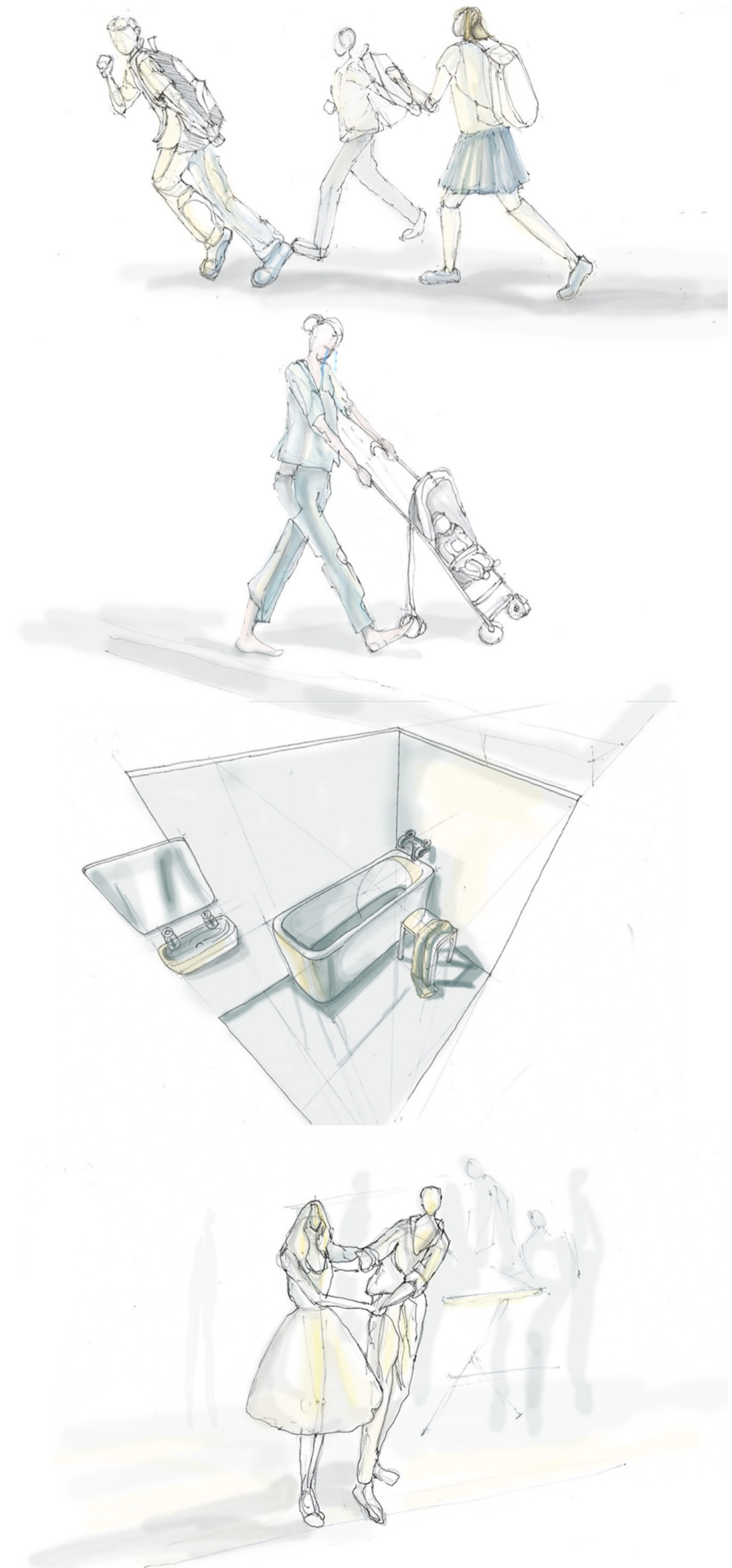
A space to reconnect with each other

The final stage of the concept is a garden which is also an office for a sound recording studio. The studio's work focuses on the relationship between humans and plants. The garden will be partially open to public and the community in the area, aiming to provide a space where the communities connect with each other.



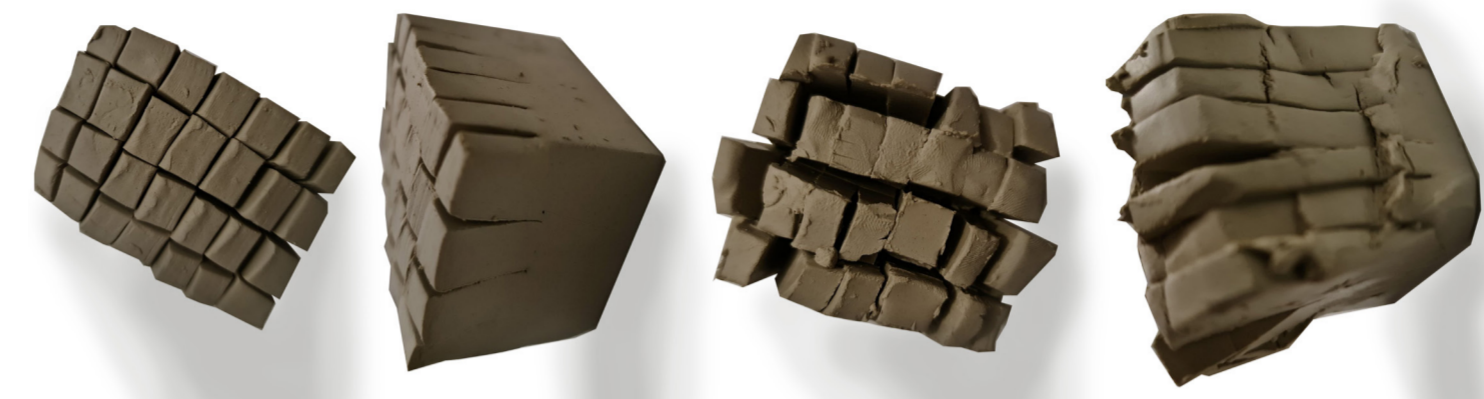
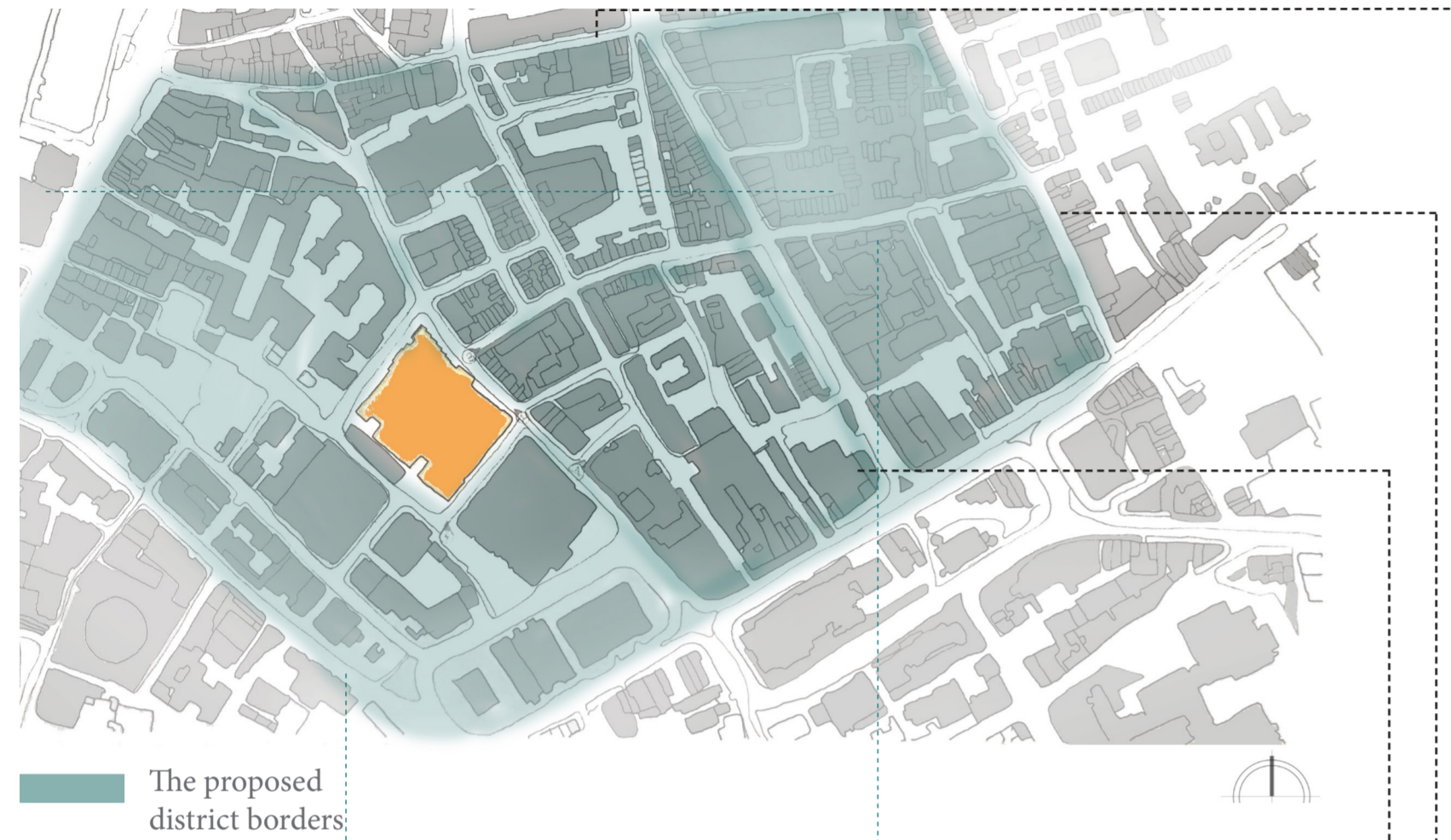
People's stories

Each image represents a lived memory of people who lived in the Whitechapel/Portsoken area from East London. Their stories are proof of how much architecture can impact people's lives and how important it is to create spaces for connection.

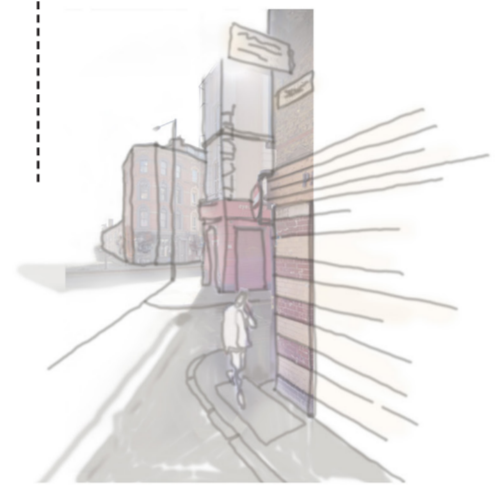


RECONNECT - A district to reconnect with home

A district in a district is a proposal to create a district in the area of the building. The aim is to create a space that will make people forget about the boundaries between them and to challenge them to experience their home using sensory design.



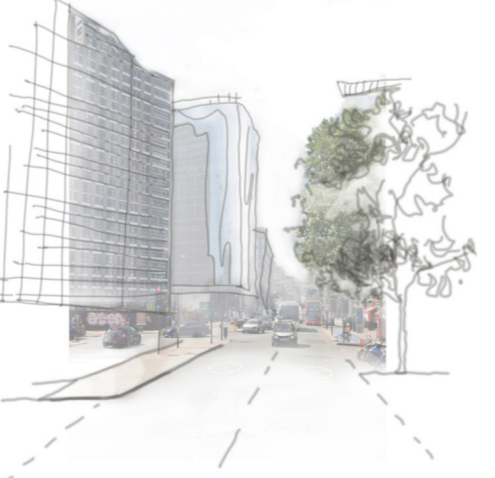
The aim is to find key places where to design sound panels that will be used as street signage: Instead of using signage with the names of the street, it will be used sound panels with different patterns for each place. This way, hearing the sound, people will know where they are and where to go from there.



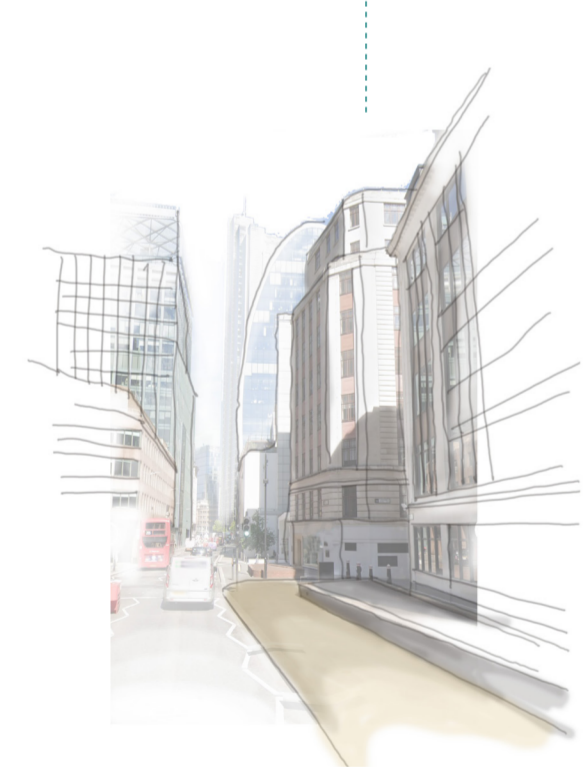
White's Row



Brick Lane



Whitechapel Highstreet



Duke's Place is a street from City of London council and what's very interesting is it's architecture. We can observe a dance between curved and straight lines and the harmony of their placement. The materiality of the street illustrates the modern style with glass and steel.

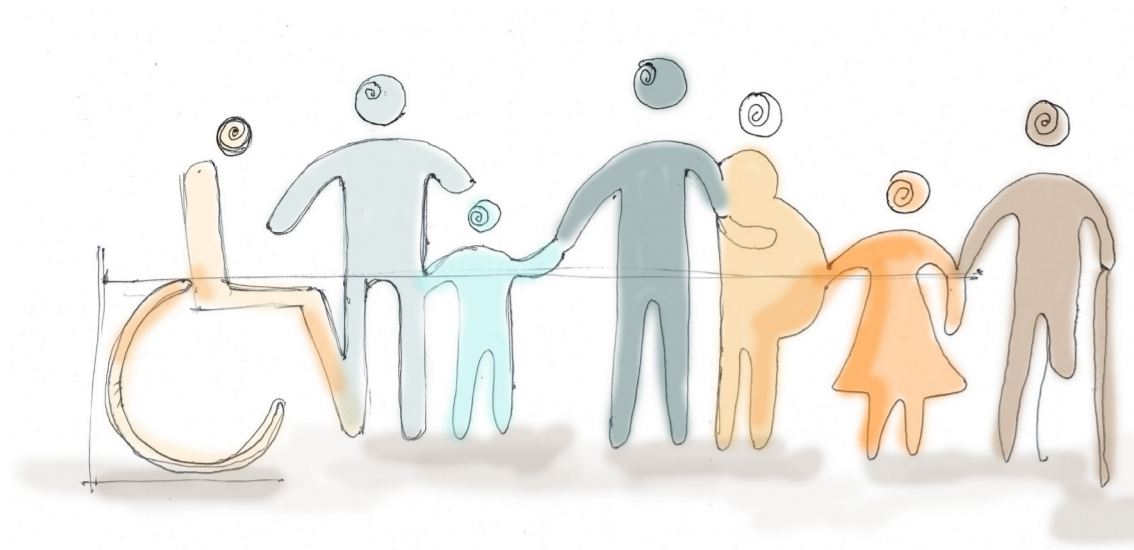


Devonshire Row is a very small street going towards Liverpool street station. With lots of pubs and restaurants the street is full of life during the night and has some sort of enjoyable feeling to it.



RECONNECT - A district to reconnect with ourselves

The next proposal is meant to help people heal from day to day hardships and give them a space to relax and reconnect with themselves.

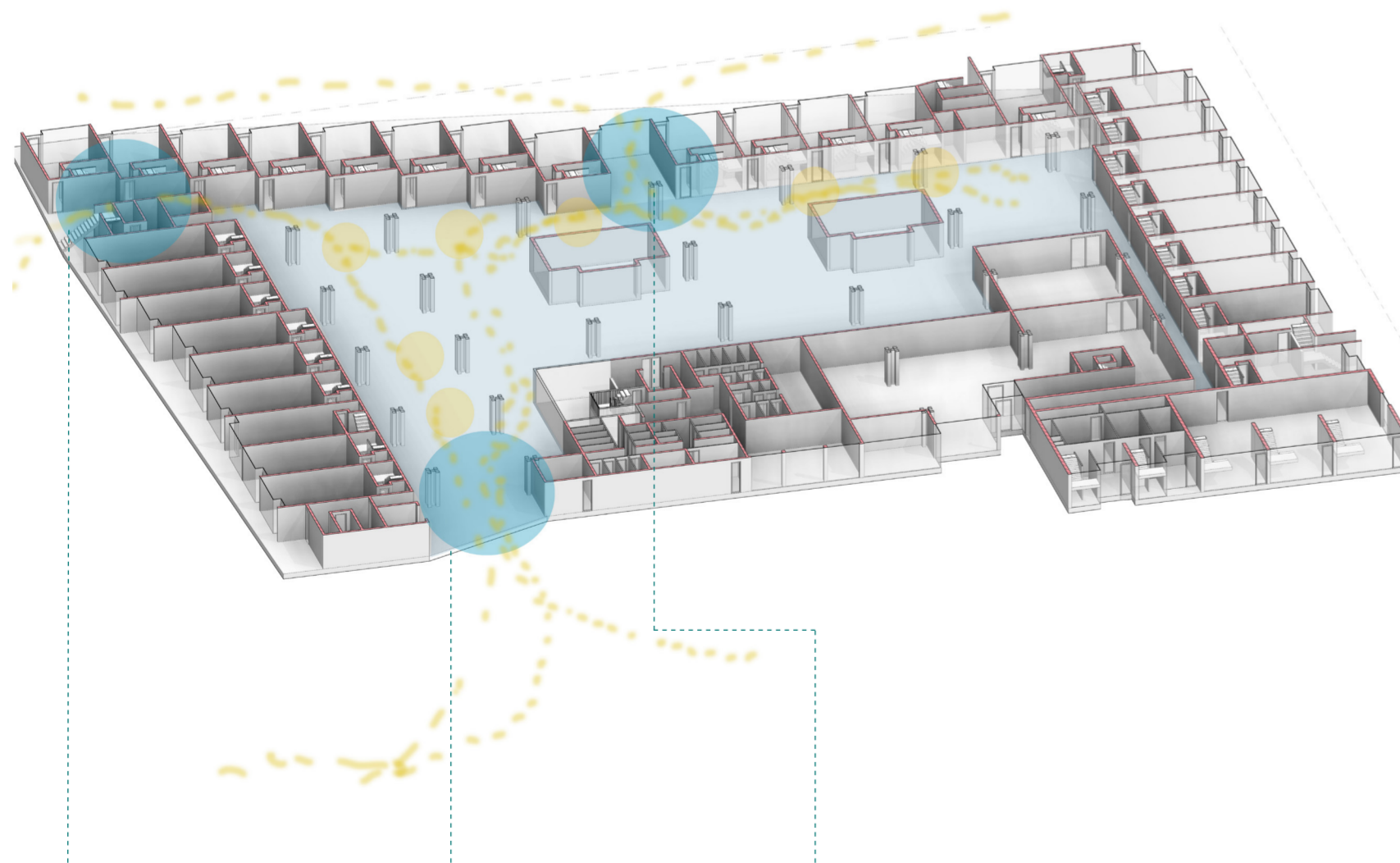
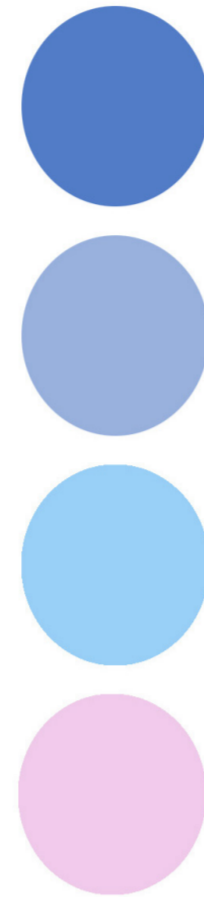


--- Circulation

● Skylight from the podium

● Existing Car park which will be turned into relaxation space

● Access to the area
To make the space accessible to more people from the community the building will be opened up from the Middlesex Street side and Harrow Place



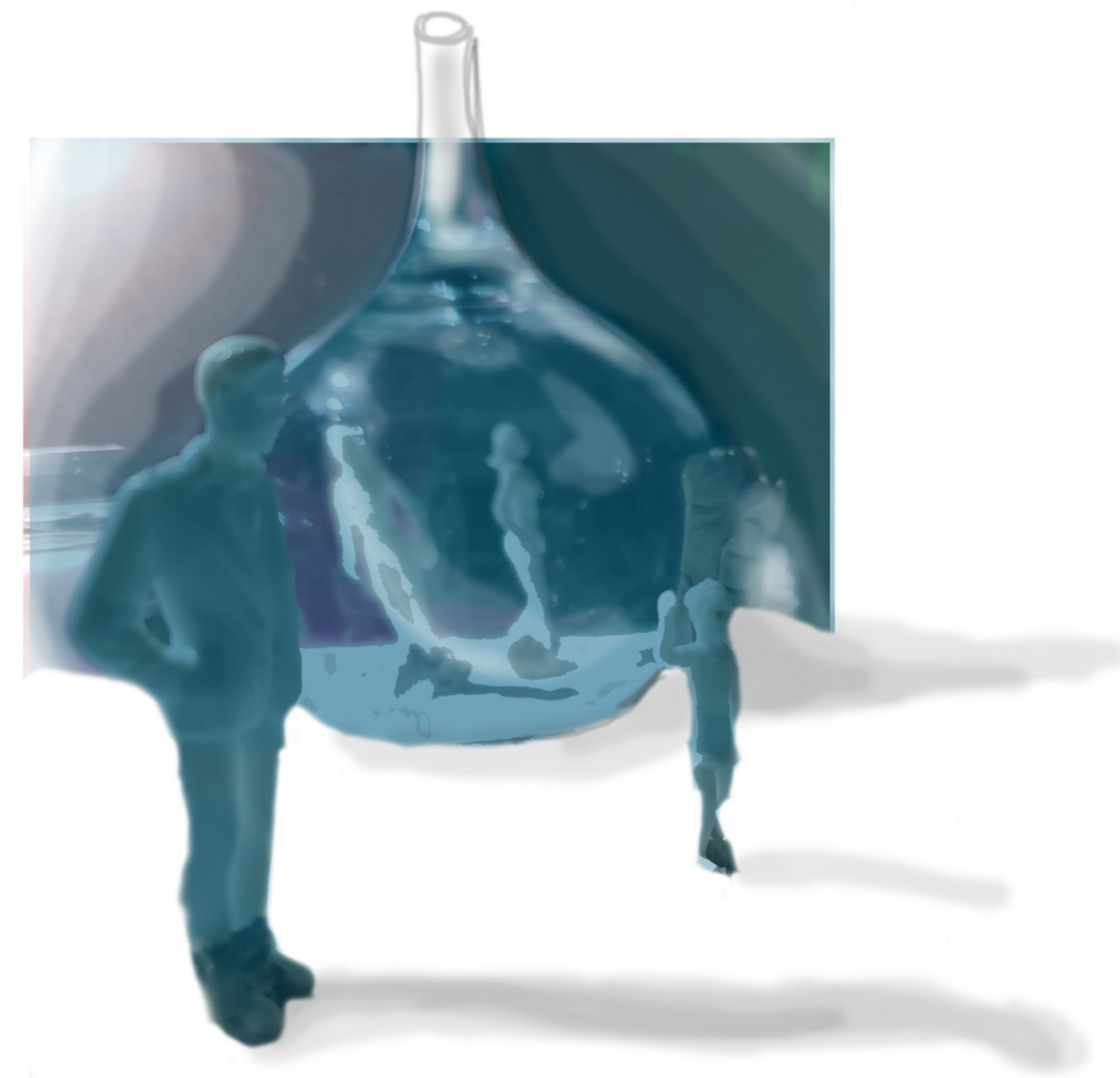
This space between the stairs to the flats and the units from Middlesex Street will be opened up for the public access to the car park.

This will be access because it is already an access to the car park, the only difference will be that it will be open to the public.

This unit will become access to the car park because it was an access before and it doesn't require too much demolition.

In a small experiment, researchers at the Aalborg University of Copenhagen blind-folded subjects, connected them to EEG machines (which register brain activity), and exposed them to different colours of light. Their brains were more active when their bodies were exposed to red and blue light. Green light yielded calmness and relaxation. Another study found that blue light helps people relax more than if they were using white light." (Archivecurbed.com)

Below we have examples of relaxation rooms and we observe that pastel blue and pink light were used to create a specific atmosphere in the interior. Guided by the study above, we know that for relaxation blue and green light have the most effective impact on our brain.

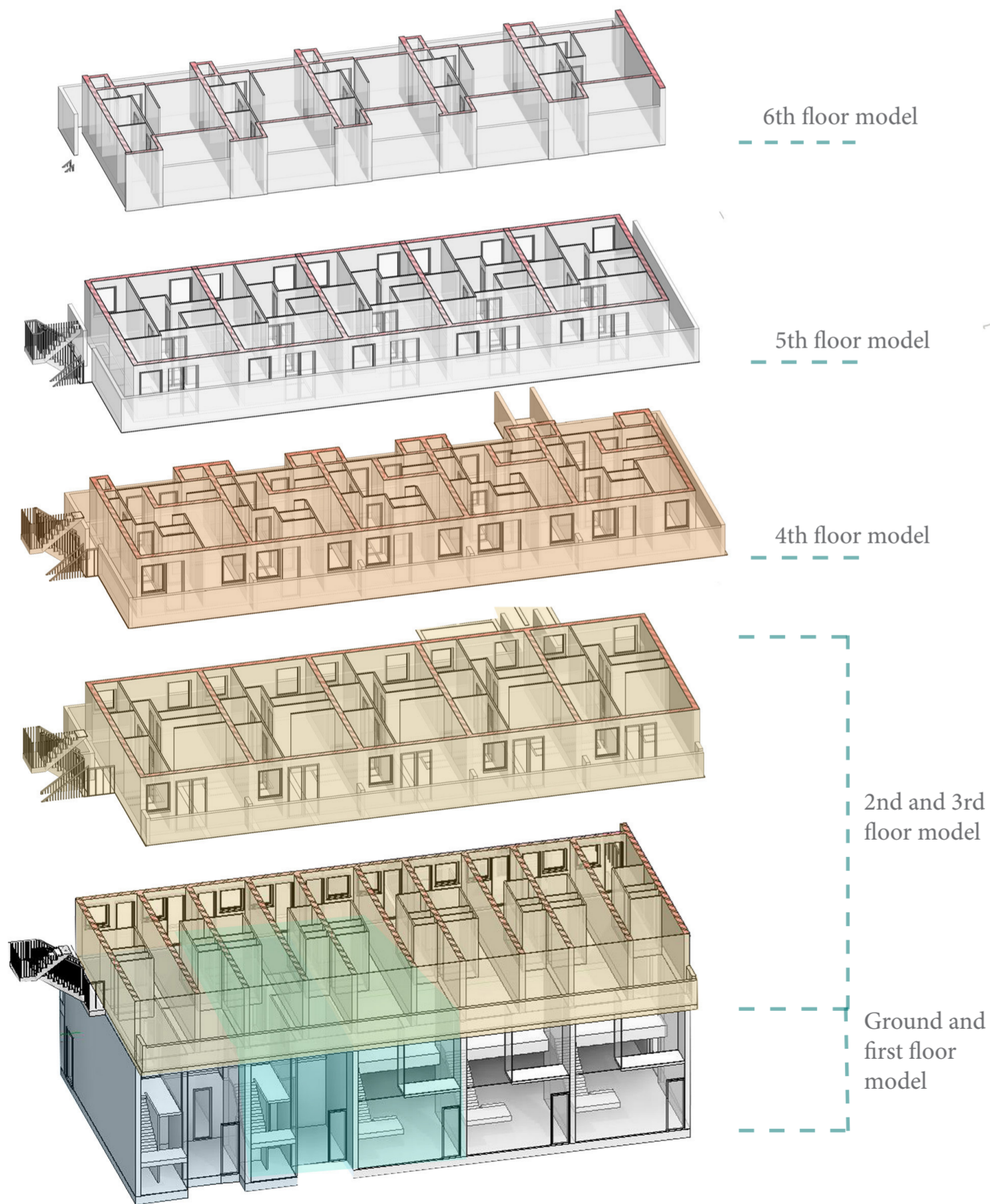


RECONNECT - A district to reconnect with each other

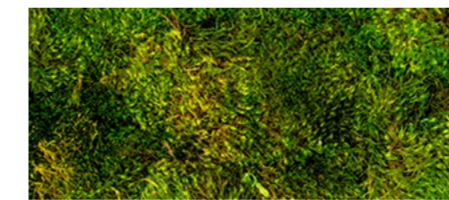
The start up business is a sound recording studio and the interior is created to let the public feel and physically experience the sound and connect with the plants.

- Sound Chambers
- Private offices and kitchen area
- Reception
- Changing and shower rooms

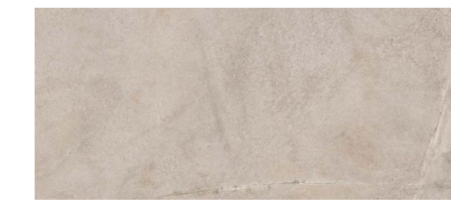
The reception area is a combination of public and staff access. The design is aiming to provide the staff with access to the facilities such as showers and changing rooms. The purpose is also to provide a space of introduction to the business for the public.



For the front wall we have photovoltaic glass. This will provide all the energy for the interior.



The ceiling is from moss for air quality purpose and because of colour. The study showed that green is associated with relaxation. The light from the ceiling is very uniform. Using the long and consistent straight lines through the moss we bring the district pattern inside the business.



The material for the floor is stone which is meant to remind the stone patterns placed in the district. The colour is warm so that the sun will reflect through the window, the light inside seems warmer.



Acoustic tiles are used for the interior walls. Their surface is designed to remind one of calming waves to help with the relaxation.



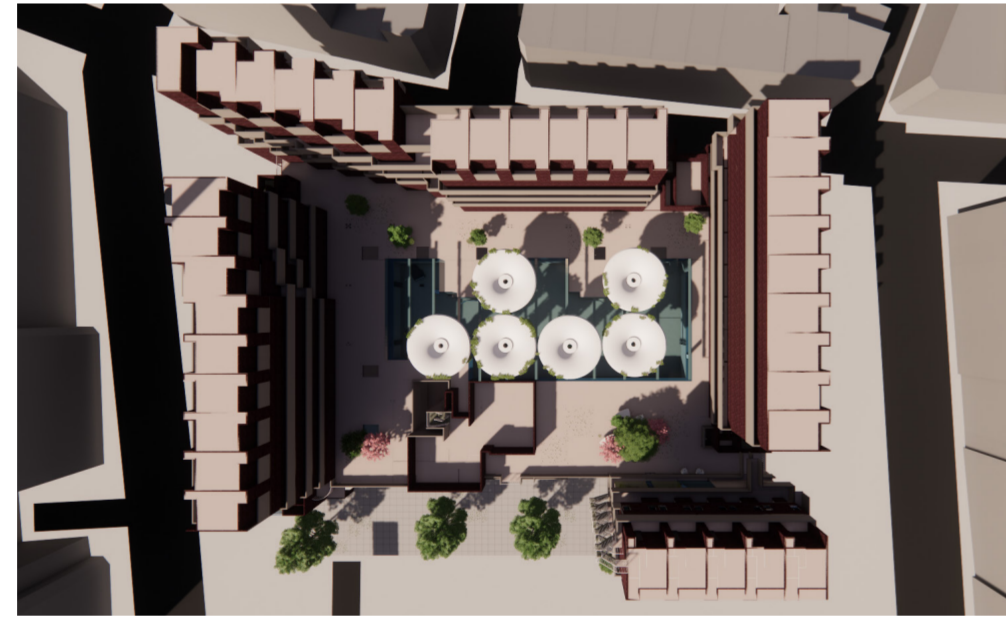
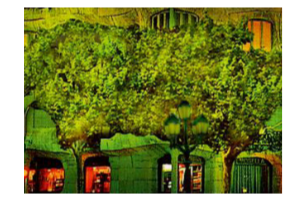
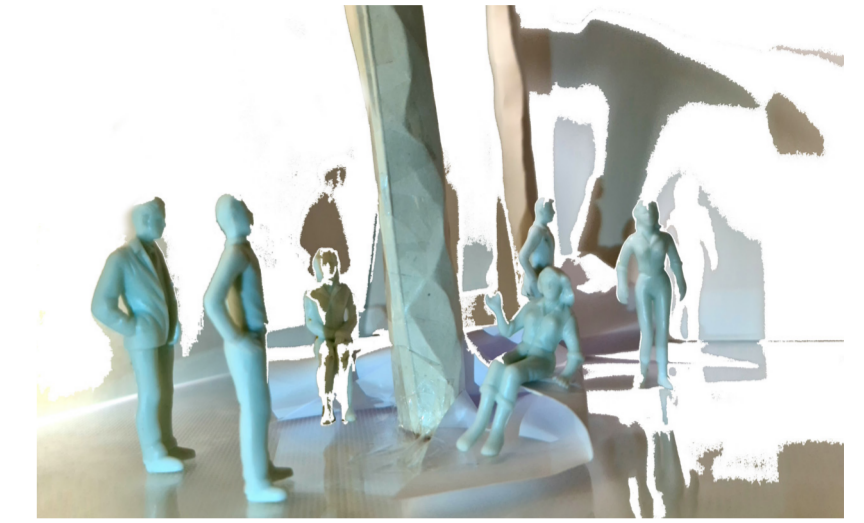
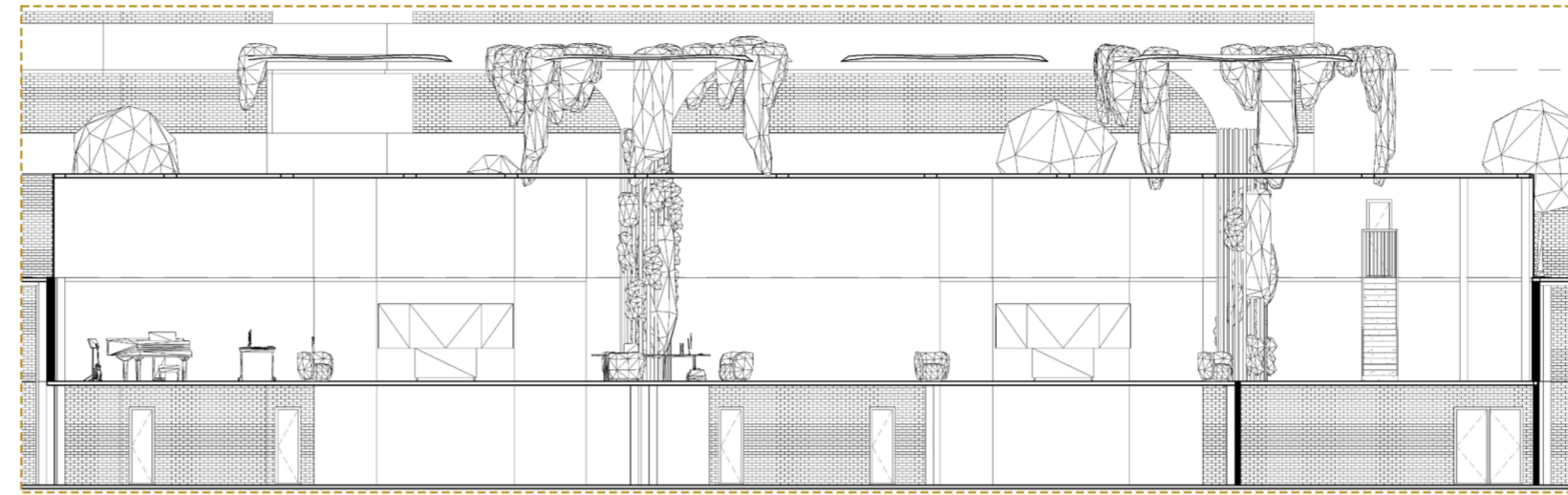
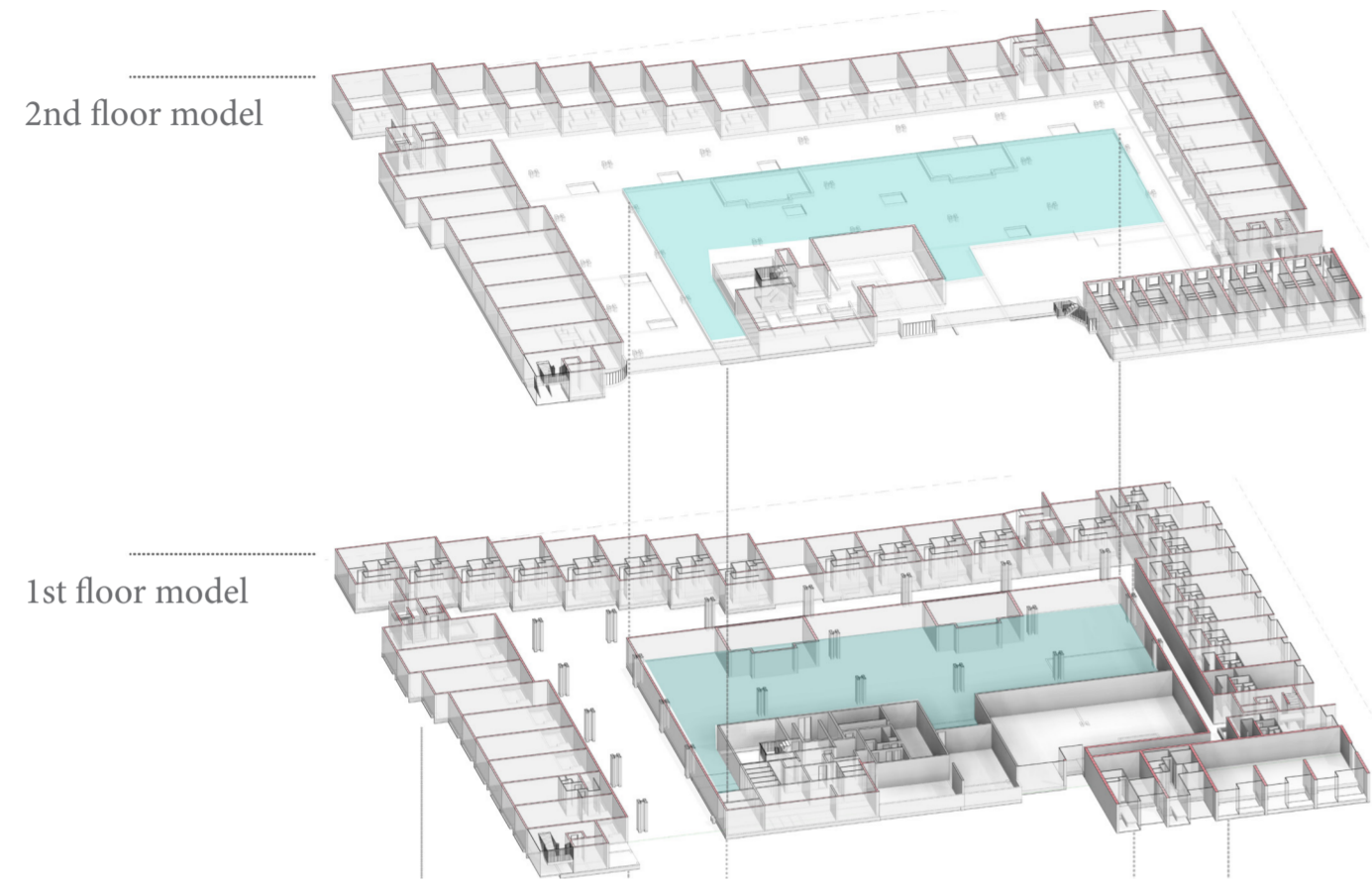
The reception desk detail and all the wood from the interior is from this natural material which made from hay. The Material has a scent of grass and plants and enhances the business's aim which is to bring people closer to nature.

RECONNECT - A district to reconnect with each other

The office and the garden space is designed in the unused space from the first floor of the building. The garden columns are extended up to level four.

The Plant Wave Device, which is a device when is attached to a plant's leaf lets the plant sing. This device will be placed in different strategic spaces in the interior for people to hear the songs from the garden

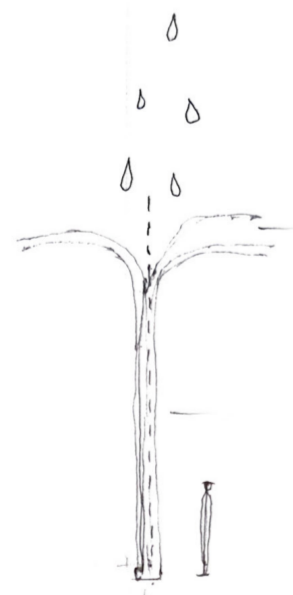
Office and garden



On the podium, right in front of the cafe genetic modified bioluminescent trees will be placed to light up the podium instead of artificial light. The trees work by absorbing the sunlight and are a more sustainable alternative of electricity.

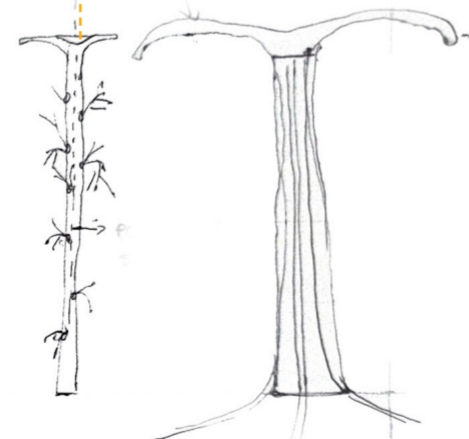


The next structure is inspired by Aster flower, symbol of love

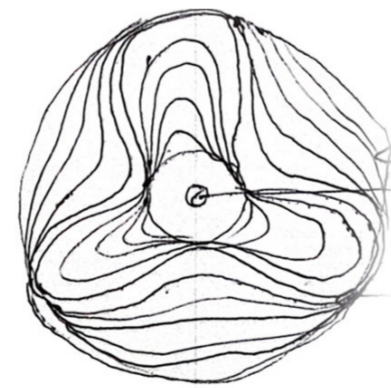


The top part inspired from the petals and opening of the flower will be the rain water collection point for the garden structure

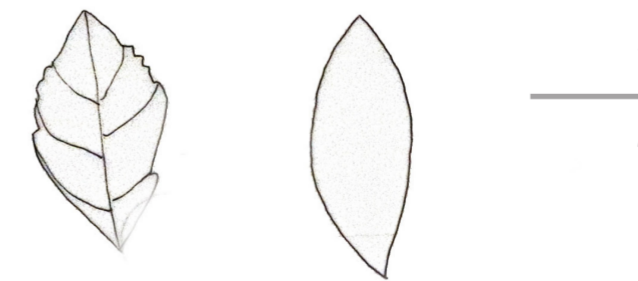
Hydroponics, aeroponics gardens.



Exterior structure surrounding Hydroponics and protecting the plants.

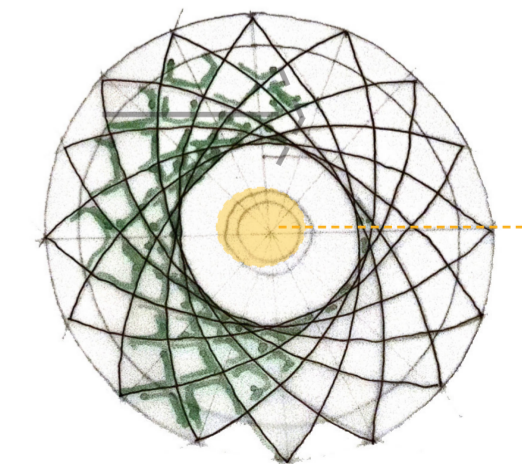


The top part of the structure will be a three layer concrete that will collect the extra rainwater and will allow moss to grow. This will purify the air from all the pollution from the area



Simple geometry

Basil will be a plant in the garden because of its meaning which is good wishes. The Basil leaf inspires the pattern for the top rain water collector



Rain water collector for the garden

The pattern: the leaf is rotated so that it will form the pattern from the image to help keep the moss on top of the concrete.