

# Delapré Dog Centre



Daycare . Boarding .  
Grooming . Hydrotherapy .  
Physiotherapy

By Florence Du Bignon



## Brief:

The university have been approached by Delapré Abbey Preservation Trust to create a design proposal for the renovation of its dilapidated 19th Century Stable Block located on the site of Delapré Abbey. The clients were open to different ideas for how the space was used but the proposed concept must respect the building's heritage, animate the site, support the Trust's objectives, complement existing visitor attractions, create jobs and a supports the needs of the community.

## Problem/Observation:

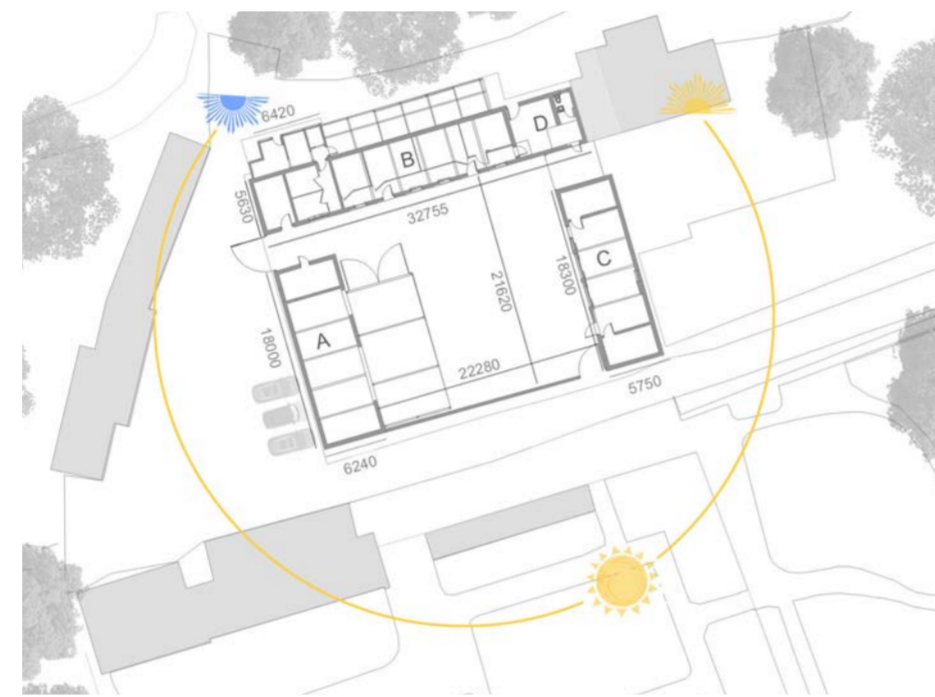
Upon visiting the site for the first time, it became clear the space is very run down, dark and each building feels very separate. Dog walkers are one of the main user groups at Delapré Abbey and the site is located near a woodland area. It is passed by numerous dog walkers throughout the day, making it a suitable space to design something aimed at this user group.

## Process:

After researching into dog-based services in the area, it became clear that there are several services in the area, but were often limited to the number of dogs they could look after, didn't have much outdoor space or only accepted smaller breeds etc. Facilities such as hydrotherapy centres are limited, with the nearest one in Moulton and others not qualified to give advice. It also became evident that there are no facilities that provide all dog based services in one space.

## Proposal:

Delapré Dog Centre will provide dog owners in the local community with day care, boarding, grooming and hydrotherapy facilities in one space. A shop, dog wash and drink facilities for after muddy walks, A space for socialising new dogs, access to an enclosed garden for dogs to play with others and dog advice will also be provided. The centre will offer obedience/agility training and other classes. Delapré's parklands could also be used for Dog shows in the summer.

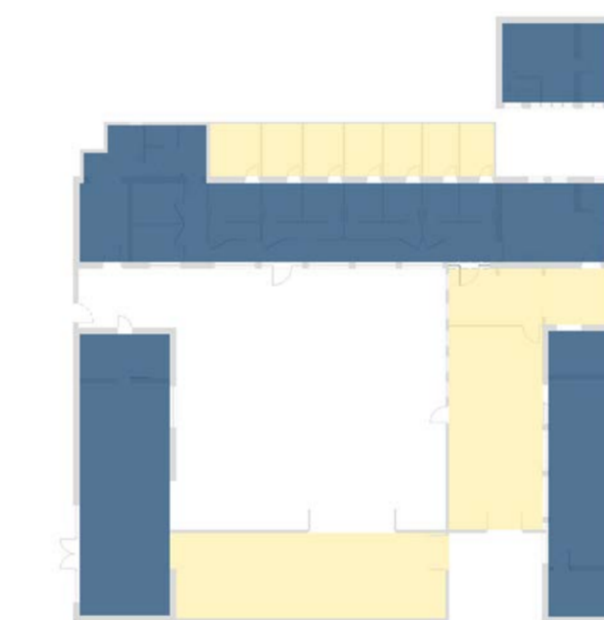


Location: London Road, Northampton, England NN4 8AW



## User Group:

A Space For Dogs And Dog Owners To Create A Unique Community of Dog Lovers



Existing Plan Showing Proposed Extension

The proposed extension will connect each of the original stable blocks whilst also providing the site with room to create an indoor exercise space for dogs and main reception area, providing visitors with access to all services in one space. The proposed extension also creates a safe and enclosed courtyard garden for dogs to play off lead.



The extension is arched to mimic the window arches seen in the original buildings

## Programme





Plan  
Not To Scale

- 1 Shop Entrance
- 2 Shop
- 3 Stockroom
- 4 Side Entrance for staff only
- 5 Storage
- 6 Staff Toilet
- 7 Outdoor Kennel Run
- 8 Kennels \*\*
- 9 Courtyard
- 10 Indoor Exercise/Class Space
- 11 Dog wash and drink station for dog walkers
- 12 Outdoor Social Space
- 13 Ramp
- 14 Main Entrance
- 15 Reception and dog advice centre
- 16 Self-service coffee/tea
- 17 Social Space/waiting area
- 18 Storage
- 19 Hydrotherapy and physiotherapy centre
- 20 Grooming Parlour: wash area
- 21 Grooming Parlour: grooming area
- 22 Staff Room
- 23 Staff Toilet
- 24 Staff Accommodation
- 25 Staff Toilet and Shower

\*\* The original stable cubicles will be maintained, with newer kennels built inside each cubicle to create more individual kennel spaces. The original cubicles will have paint stripped off to expose the wood and all metal will be painted yellow to match the colour scheme.



Reception And Social Space

Materials

Outside



Extension:  
Western red cedar cladding



Extension Roof:  
Western red cedar shingles



Courtyard:  
Herringbone Brick Floor shingles



The Courtyard - A sensory garden with dog friendly plants, a sandpit, sensory path and other features to keep dogs entertained during the day

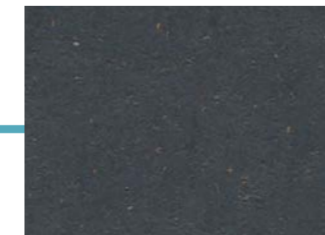
Colour Scheme



Inside



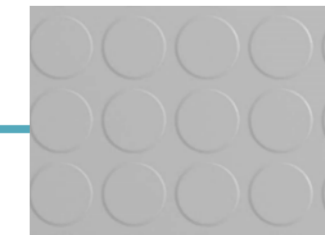
Reception And Shop:  
Herringbone Brick Floor



Kennels And Hydrotherapy Centre:  
Marmoleum Cocoa - chocolate blues



Furniture: Simple Natural Oak furniture in social space with pops of yellow/blue colour scheme



Indoor Exercise Space:  
Rubber floor



Dog Grooming Parlour:  
Anti-slip wood effect tiles



Stables: brick walls maintained outside and painted white inside

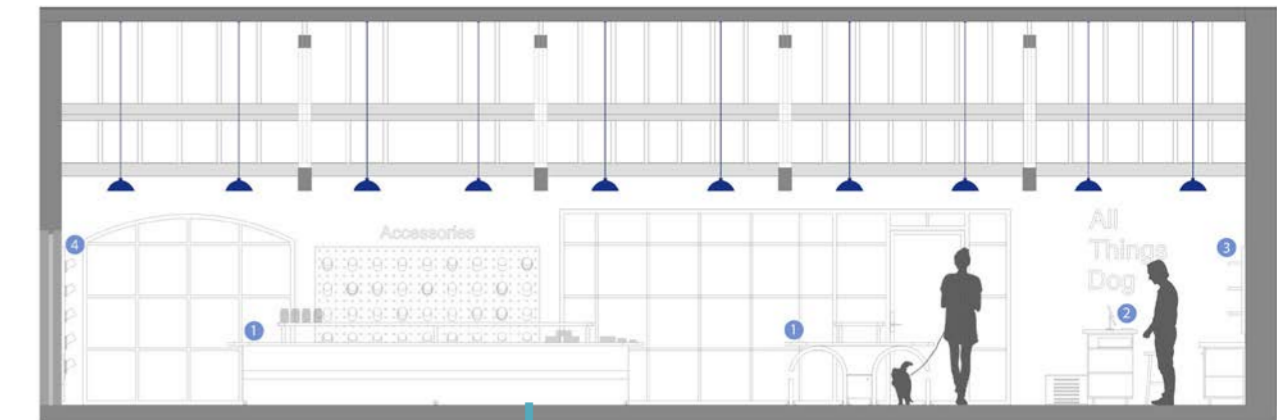


The Courtyard



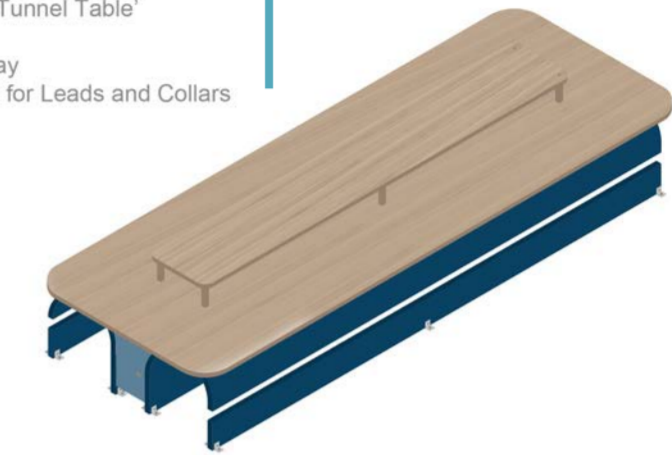
All Things Dog Shop

Detail: All Things Dog Shop



All Things Dog Shop - Interior Elevation  
Not to Scale

- 1 Central Display 'Tunnel Table'
- 2 Counter
- 3 Pick N Mix Display
- 4 Large Peg board for Leads and Collars



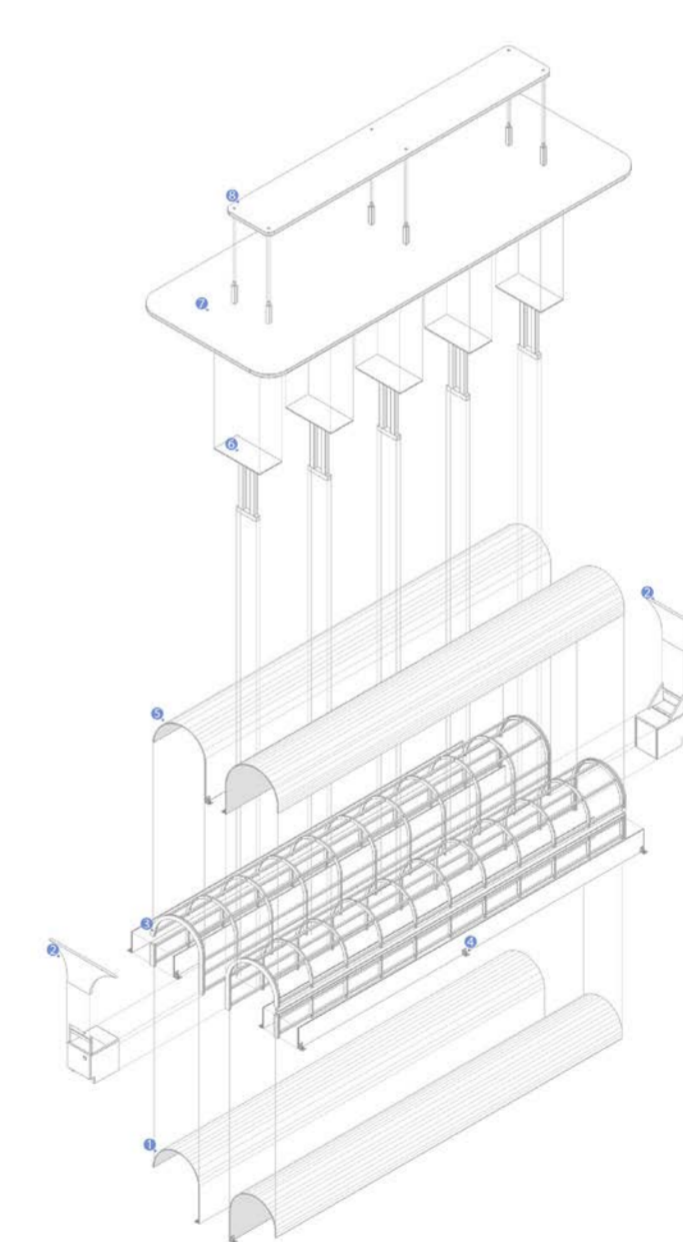
1. Tunnel Display Table - All Things Dog Shop  
Axonometric View



Section BB  
Not to scale



Left Elevation  
Not to scale



- Exploded Axonometric View Of Tunnel Table  
Not To Scale
- 1 Inner 9mm flexible MDF arch to cover tunnel framework
  - 2 Storage Cupboard between tunnels
  - 3 18mm plywood tunnel arch framework
  - 4 50mm x 50mm steel corner bracket to bolt table to floor
  - 5 Outer 9mm flexible MDF arch to cover tunnel framework
  - 6 Table leg hidden between tunnels (x5)
  - 7 Oak Stave Tabletop
  - 8 2nd tier of oak stave tabletop



3D section of tunnel display table in use

The Tunnel display table used in the shop aims to keep dogs entertained whilst owners view items on offer. Dogs can walk freely through either of the tunnels whilst still attached to their leads due to the 10cm opening at the side of each tunnel.

Materials



Plywood Framework

Flexible MDF And Regular MDF



Waterproof Paint Finish

Oak Stave Worktop