



Communal Living Area

Entrance

Library

# The Sanctuary

The Sanctuary is dispersal accommodation for asylum seekers which is to be located within a repurposed office building within the centre of Cardiff. The accommodation is to provide a community atmosphere for multi-generational families which is a secure and comfortable place to stay. The accommodation should encourage socialisation through community activities and provide support so that the accommodation feels like a home.

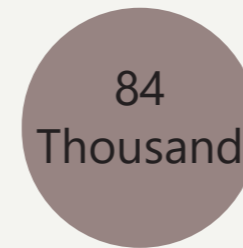
## The Facts



"At the end of 2022, there were 5.4 million asylum-seekers globally" (UNHCR, 2022)



Globally there were 35.5 million refugees in 2022 (UNHCR, 2022)

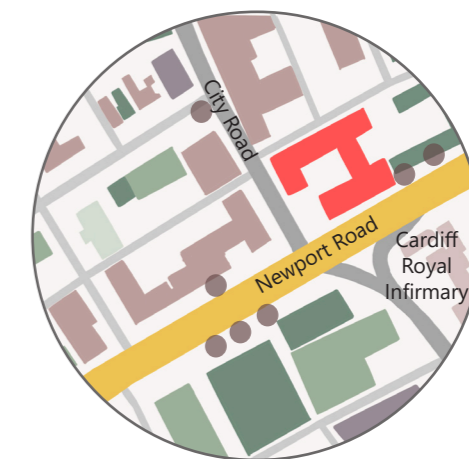


In 2023 84,000 people submitted applications for asylum in the UK (UK Parliament, 2024)

"An asylum seeker is a person who has left their country and is seeking protection from persecution and serious human rights violations in another country, but who hasn't yet been legally recognized as a refugee and is waiting to receive a decision on their asylum claim." (Amnesty International)

When asylum seeker arrives, they are placed into temporary accommodation. There is initial accommodation which should be for a few weeks then they may be moved to dispersal accommodation where they will spend the rest of their time until a decision is made on their application.

## Location



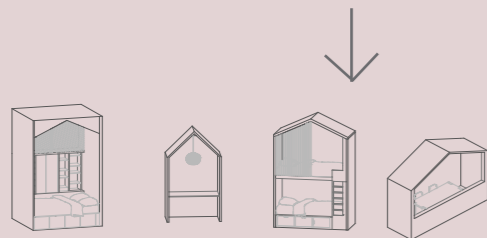
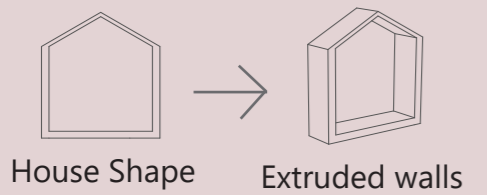
- Key:
- Host Building
  - A4161
  - Residential
  - Schools
  - Places Of Worship
  - Bus Stops
  - Commercial
  - Student Accommodation

## Concept

The concept of biophilic design consists of a connection with nature. As well as the stereotypical connection with natural forms and shapes I have also included our natural connection with home. Many people feel connection with nature as it feels like home, therefore the design will integrate natural shapes and forms as well as a connection with home.

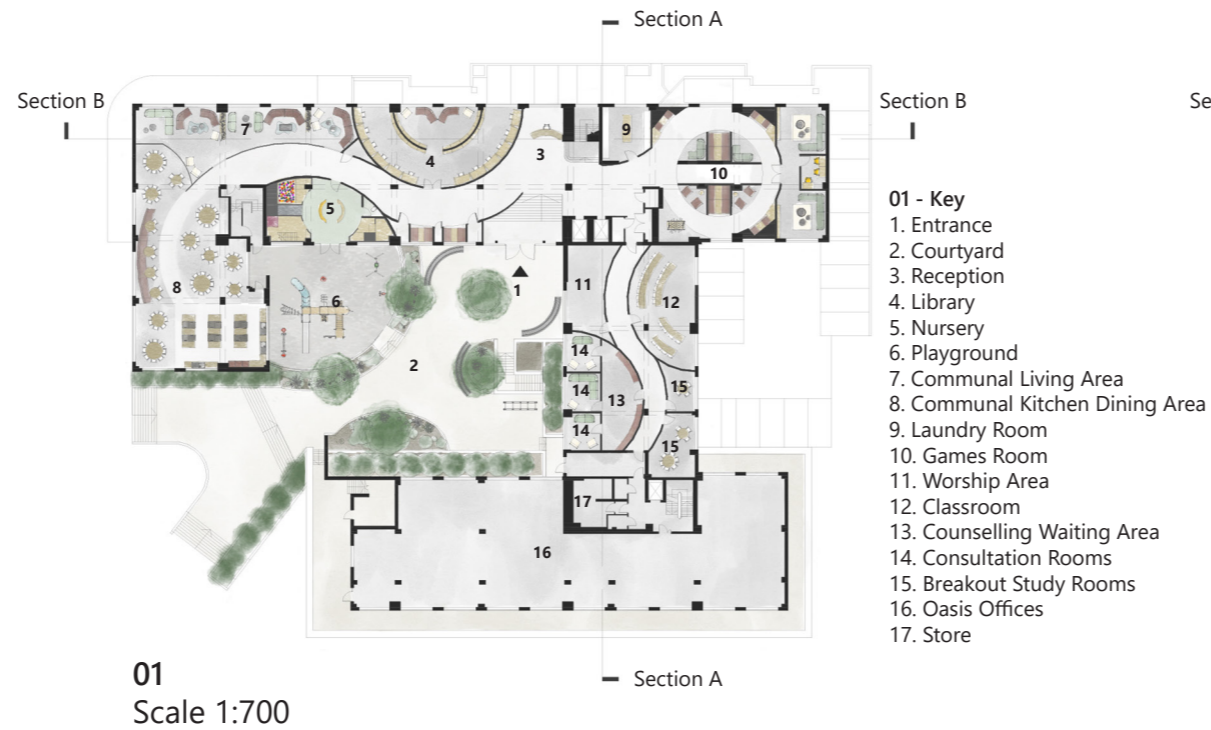
Biophilic design is further integrated into the design through the earth tone and natural colour and material palette. I have used these colours not only to carry the biophilic scheme through, but also the idea of earth being our home and no matter where we come from, our challenges and experiences, we all share the same home, earth. Asylum seekers will come from many different countries backgrounds and religions therefore designing for one religion or background may offend or upset others therefore I think biophilic design is the most appropriate scheme as we all share the same earth.

### Key move



Used this outline shape to create various pieces of furniture

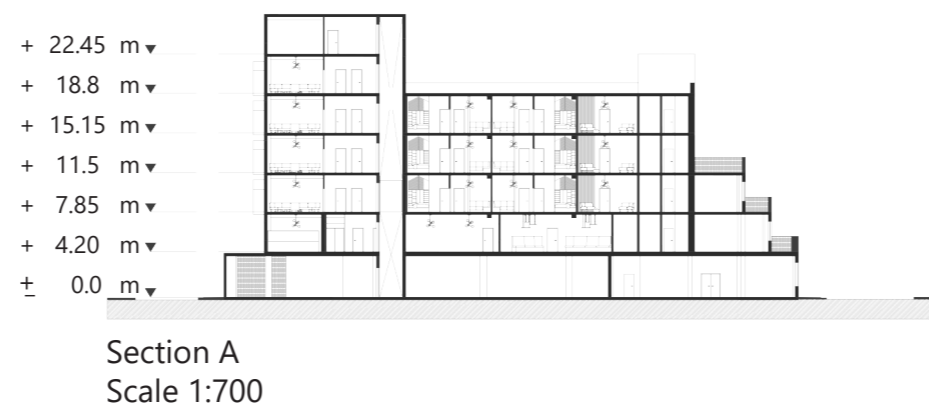
Integrated house shape furniture to integrate the idea of home and biophilic concept further.



### Accommodation

The accommodation is for multi-generational families of varying size therefore there will be 3 types of self-contained accommodation available.

Type 1	Type 2	Type 3
4 People	6 People	8 People
<ul style="list-style-type: none"> <li>- Living/ Kitchen/ Dining Area</li> <li>- Private bedroom</li> <li>- Family bathroom</li> </ul>	<ul style="list-style-type: none"> <li>- Living/ Kitchen/ Dining Area</li> <li>- Private bedroom</li> <li>- Study</li> <li>- En-suite shower room</li> <li>- Family bathroom</li> </ul>	<ul style="list-style-type: none"> <li>- Living/ Kitchen/ Dining Area</li> <li>- Private bedroom</li> <li>- Study</li> <li>- En-suite shower room</li> <li>- Family bathroom</li> </ul>



## Amenities



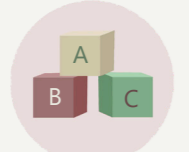
Communal Kitchen/ Dining



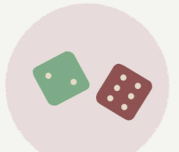
Communal Lounge



Library



Nurse



Games Room



Multi-faith Worship Area



Classroom



Therapy



Group Study Rooms



Laundry Room

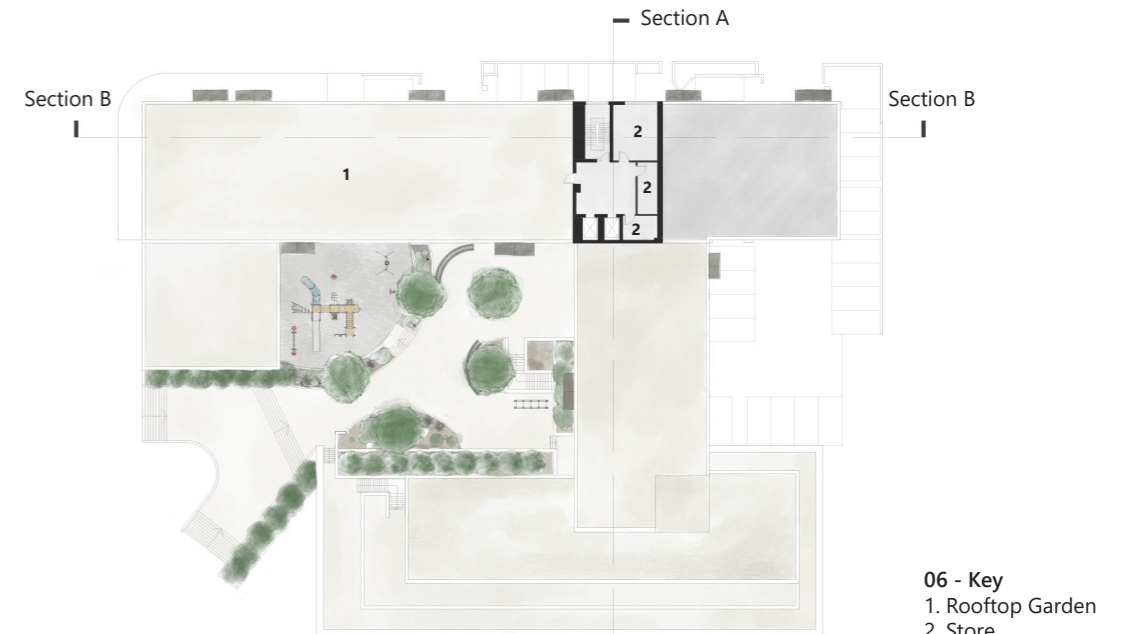


Gardens



04  
Scale 1:700

- 04 - Key
1. 8 Person Accommodation
  2. 6 Person Accommodation
  3. 4 Person Accommodation
  4. Communal Living Area
  5. Store



- 06 - Key
1. Rooftop Garden
  2. Store



03  
Scale 1:700

- 03 - Key
1. 8 Person Accommodation
  2. 6 Person Accommodation
  3. 4 Person Accommodation
  4. Communal Living Area
  5. Rooftop Garden
  6. Store



05  
Scale 1:700

- 05 - Key
1. 8 Person Accommodation
  2. 6 Person Accommodation
  3. 4 Person Accommodation
  4. Communal Living Area
  5. Rooftop Garden
  6. Store

## Exterior

This building was previously used as an office space however as it will be residential accommodation for asylum seekers I wanted there to be a visible change of use to the exterior. Therefore, I have continued the house shape to create small extensions and to also continue the biophilic concept.

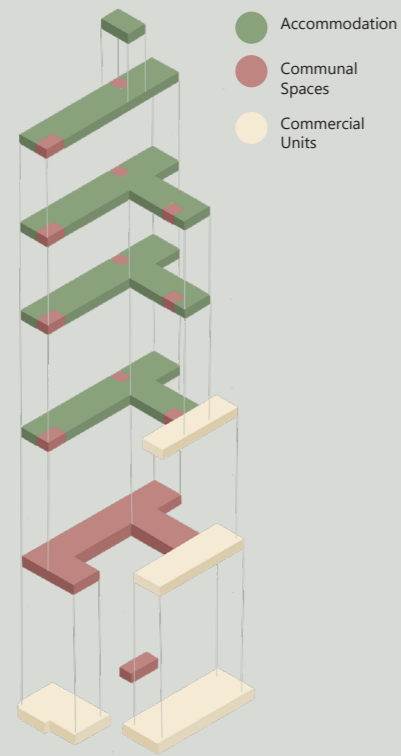
West Elevation  
Scale 1:700



South Elevation  
Scale 1:700



## Spatial Strategies



The spatial strategies of the design is to create a mini city through the idea of urbanism. This has been integrated by creating small communal spaces on each floor to create mini cities within The Sanctuary.

### Accommodation Occupancy

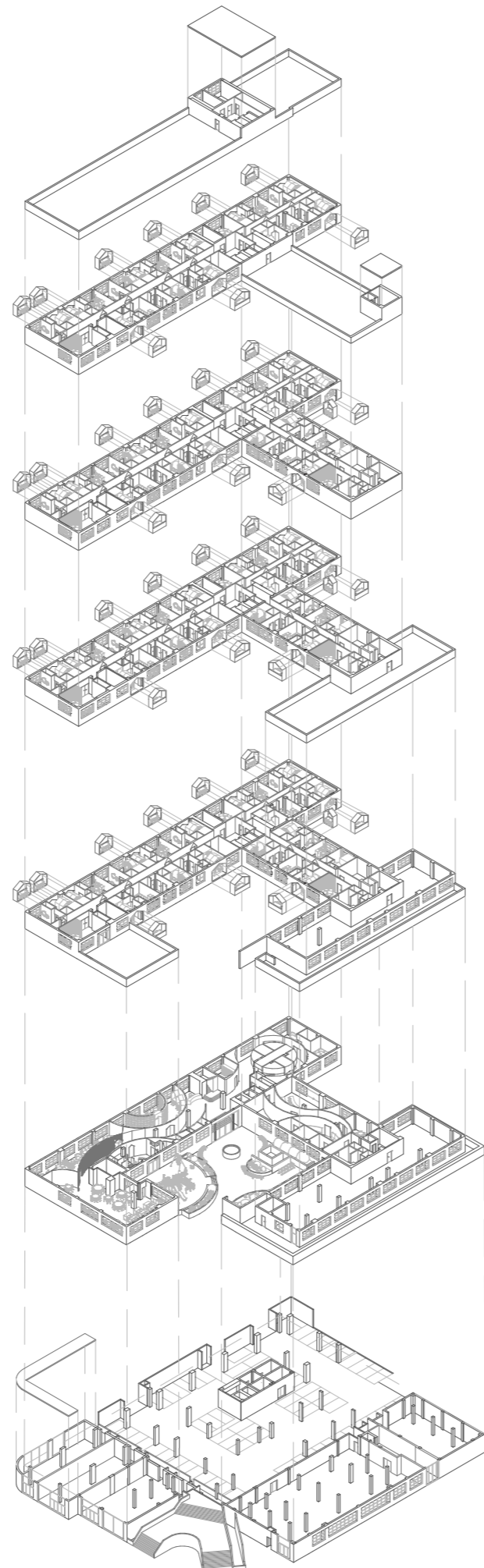
02  
Number of Dwellings: 16  
Occupancy: 96

03  
Number of Dwellings: 16  
Occupancy: 96

04  
Number of Dwellings: 16  
Occupancy: 96

05  
Number of Dwellings: 12  
Occupancy: 74

Total Dwellings: 60  
Total Occupancy: 362



06

05

04

03

02

01

00

Scale 1:1250



Communal Kitchen/ Dining



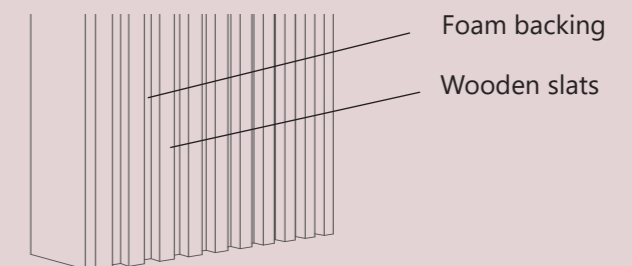
Nursery

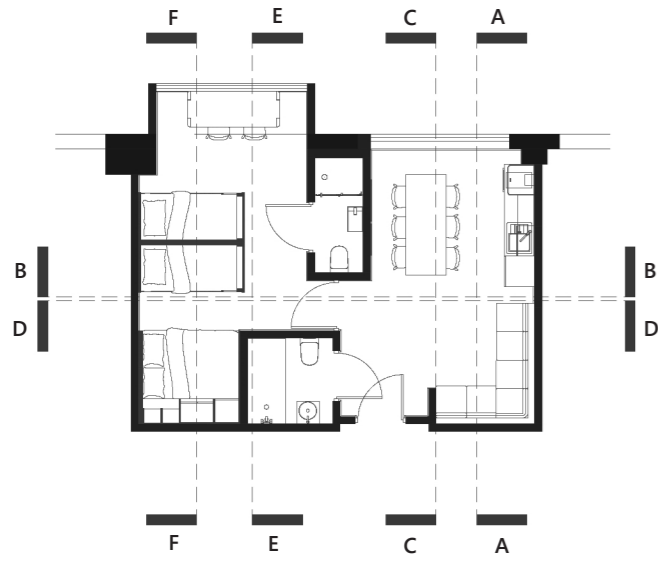
### Acoustics

Within the communal areas acoustic mitigations have been put in place with wooden slats. These wooden slats help to mitigate noise by breaking up the sound waves and they have a foam backing in between each slat.

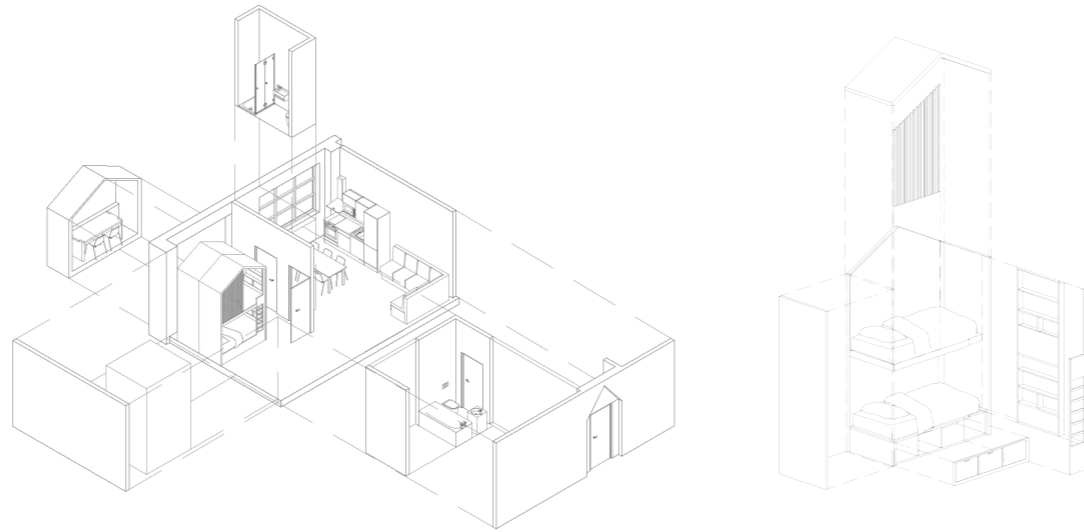
Moreover, in the main corridor I have reduced the height of the ceiling to reduce sound transmission.

I have also used upholstered soft seating and rugs to help mitigate and absorb sound.





6 Person Accommodation Floor Plan  
Scale 1:150



6 Person Accommodation Axo  
Scale 1:300

Detail 1  
Scale 1:75

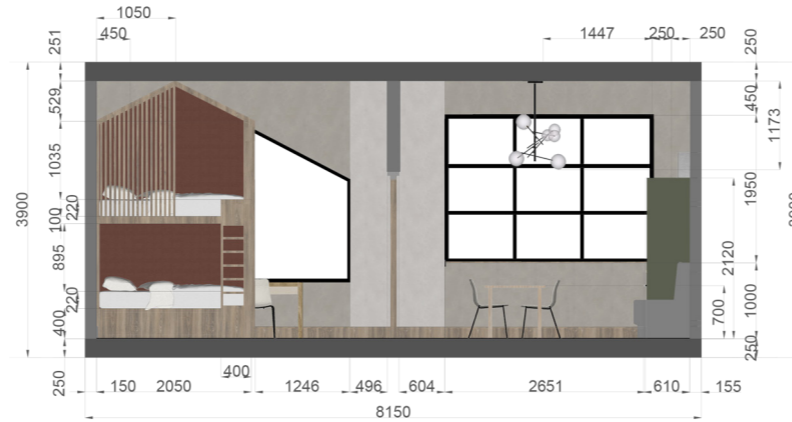


6 Person Accommodation Living/ Dining/ Kitchen

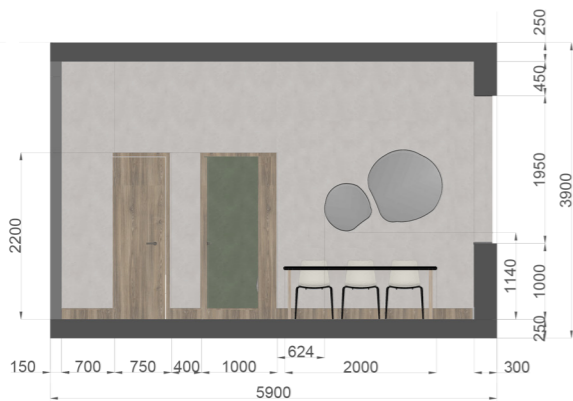
Section A  
Scale 1:100



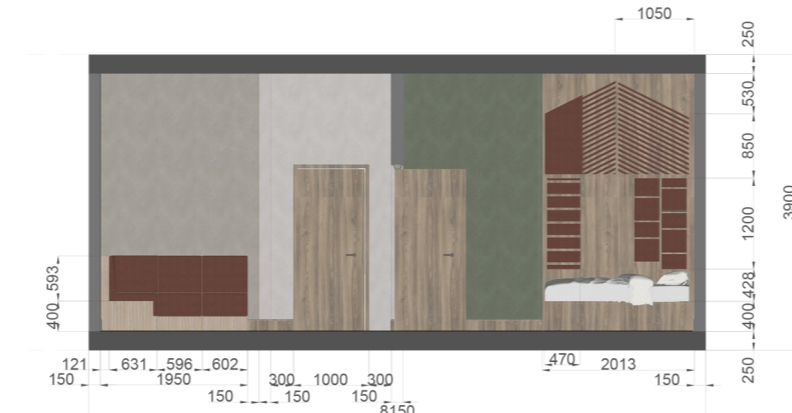
Section B  
Scale 1:100



Section C  
Scale 1:100



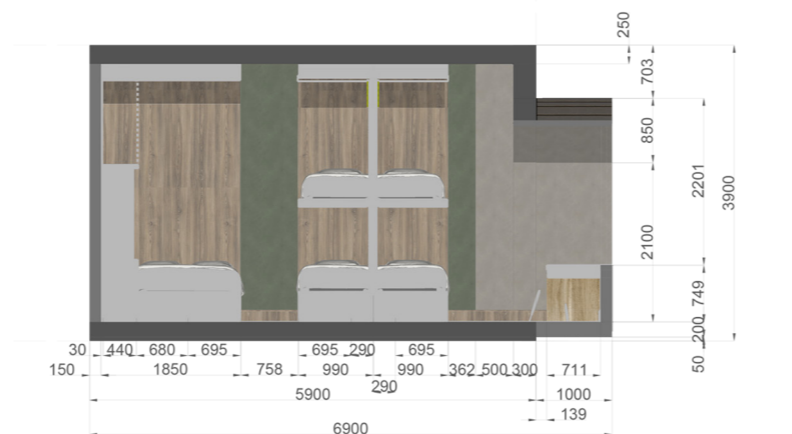
Section D  
Scale 1:100



Section E  
Scale 1:100

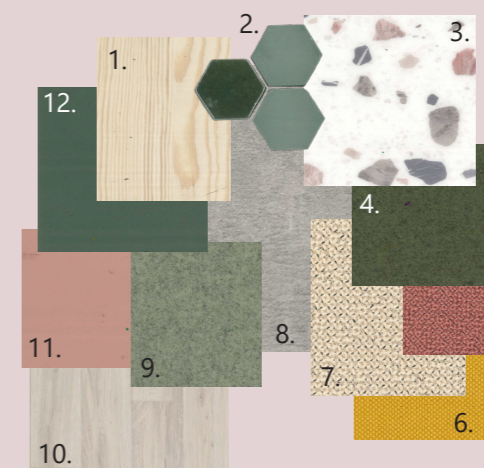


Section F  
Scale 1:100



6 Person Accommodation Bedroom

### Materiality



1. Formica - Blonde Cedar
2. Solus - Celebrity, Luminary
3. Moduelo - Roots, Fiastra
4. Camira - Blazer, Stowe
5. Camira - Yoredale, Ketterwell
6. Camira - Quest, Sandstone
7. Camira - Yoredale, Gordale
8. IVC - Origin 55, Jet Stone 46934
9. Camira - Blazer, Moray
10. Forbo - Eternal Wood, Cream Oak
11. Crown Paints Y23102
12. Formica - Green Slate

Materials have been carefully considered alongside material durability to ensure design longevity.