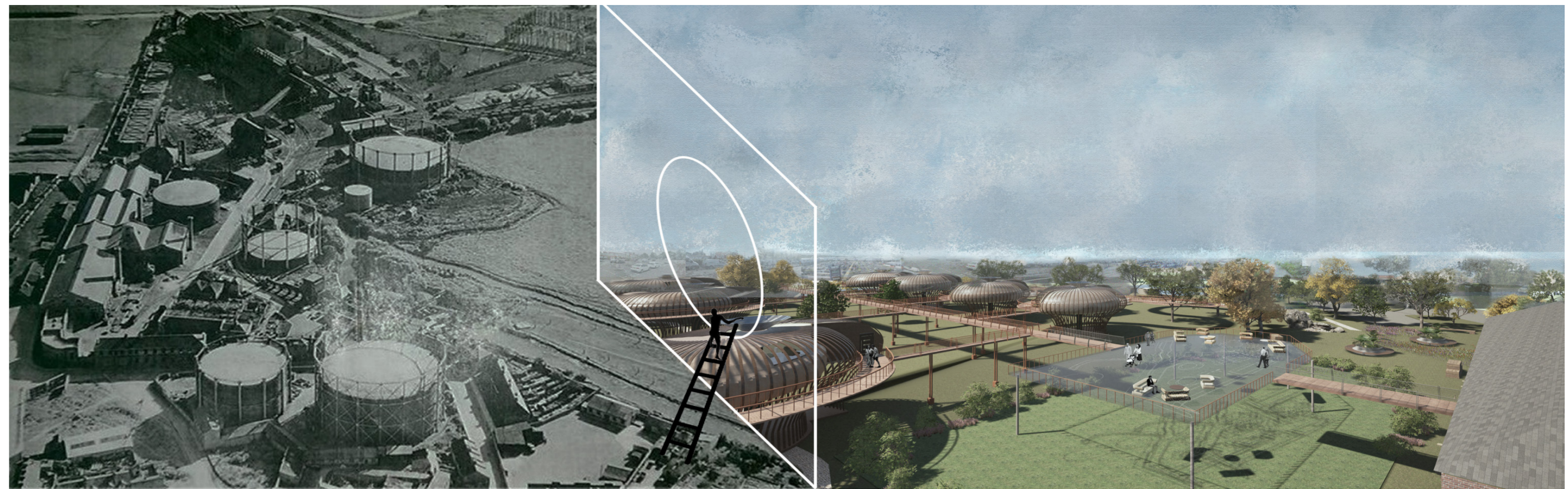




**EcoScape** a unique green urban resort in a former Victorian Gas Works building located in Northampton, East Midlands region of the UK. It offers distinctive sustainable activities in a tranquil eco haven within the built-up landscape.



### BRIEF

EcoScape, located at the former Gas Works on Towcester Road, faces structural challenges due to its historic relevance as an industrial estate. However, the Lamington Group sees these challenges as opportunities for sustainable development, emphasizing adaptation and preservation. Despite its historic nature, the site's proximity to Northampton town centre ensures accessibility for visitors.

### PROBLEM

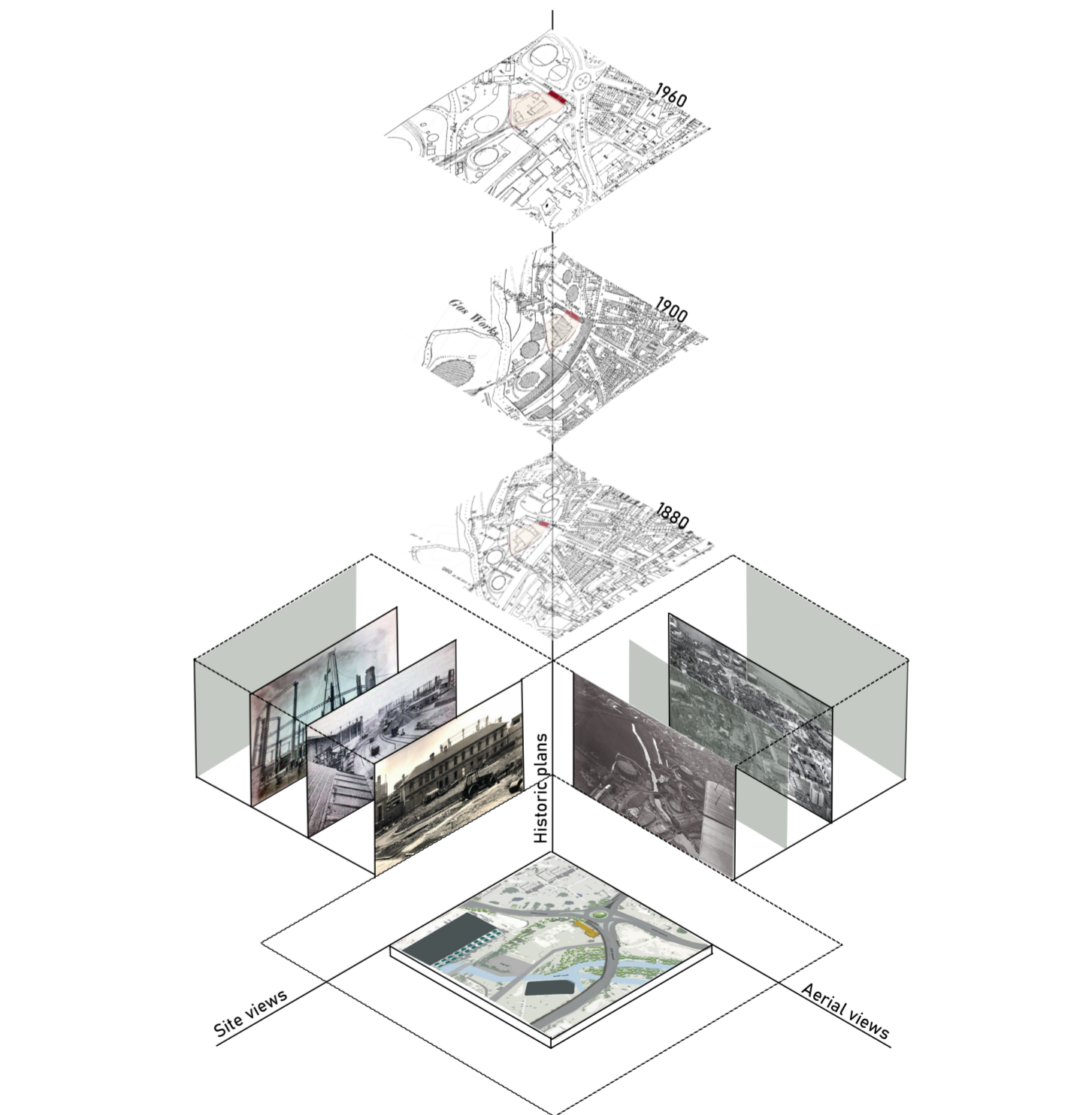
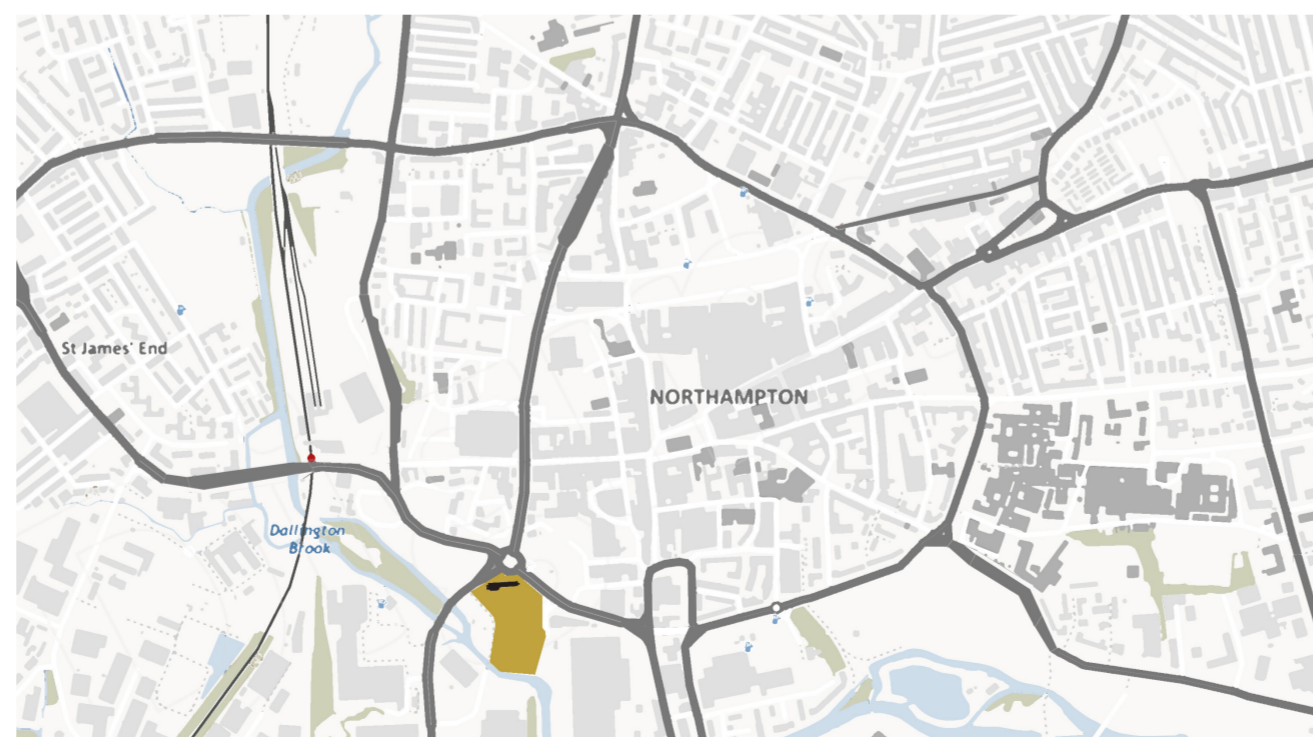
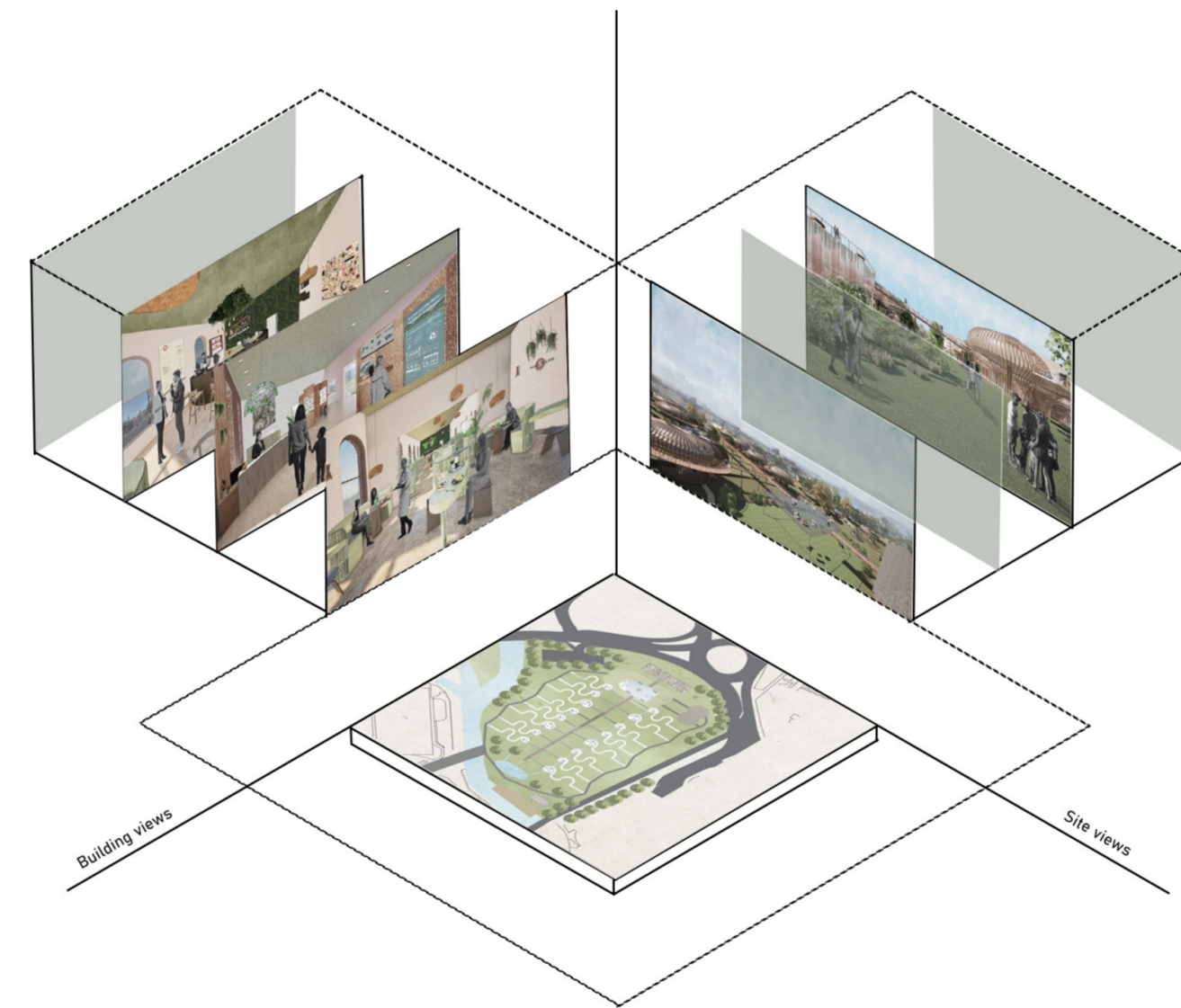
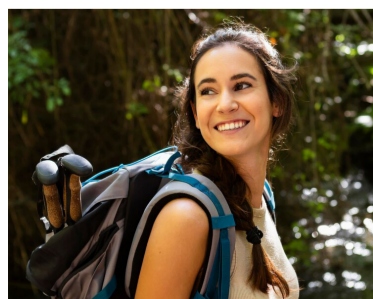
In Northamptonshire, there's a lack of eco-friendly accommodation, leaving environmentally conscious travellers with limited options. Research highlights that 30% of guests now prioritize eco-responsible stays. Additionally, in the UK hospitality sector annual food waste is 92,000 tonnes, 75% of which is preventable: this underscores the need for sustainable solutions. The East Midlands region indicates a concerning increase in health risk factors which have worsened post-pandemic with increased anxiety, low happiness, hypertension, obesity and high smoking rates.

### PROPOSAL

The conversion of a historically significant industrial site into the EcoScape urban resort represents a significant shift. This project aligns seamlessly with the town's overall development, offering both short and long-term benefits to the region. Recognizing the site's historical and industrial heritage, the proposal integrates eco-friendly activities like river clean-ups using paddle boards and canoes. This diverse project provides clients with a unique and sustainable hospitality experience. Moreover, the plan pledges to generate new job opportunities during and after construction, fulfilling the client's goal of creating a lasting economic impact on the town.

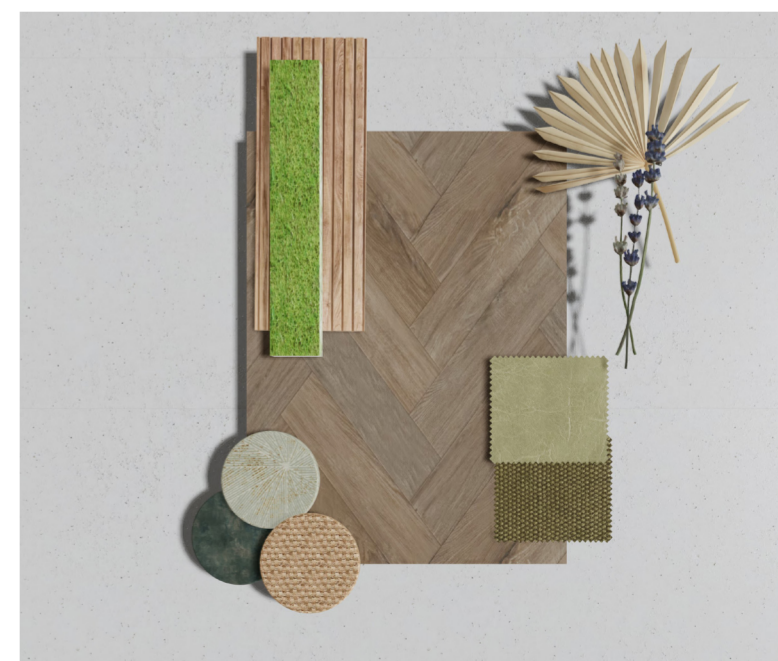
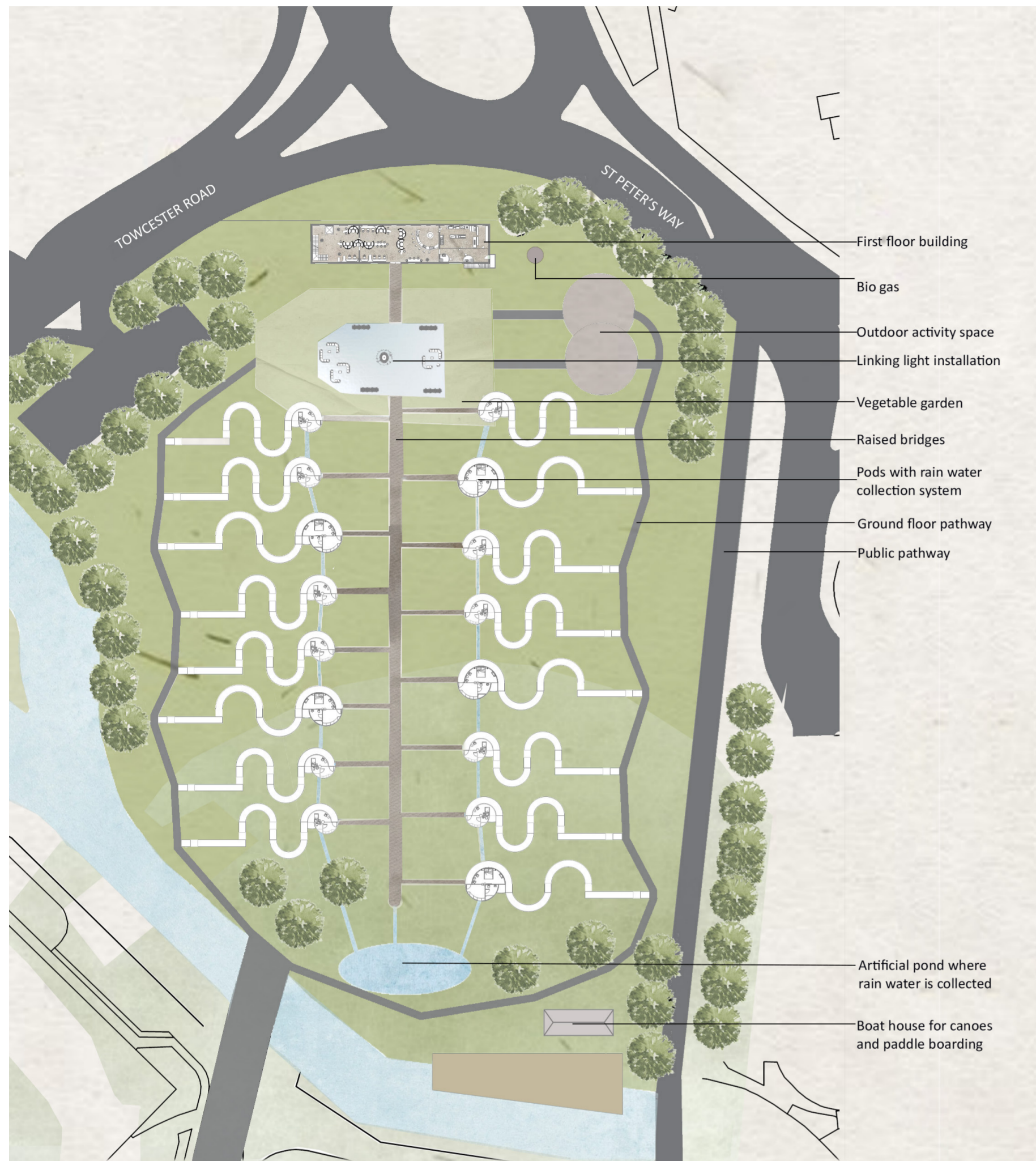
### USER PROFILE:

EcoScape is designed to be a tourist destination, therefore, different age groups are expected to visit. The targeted users range from tourists, cultural visitors and people particularly interested in nature and the eco system.





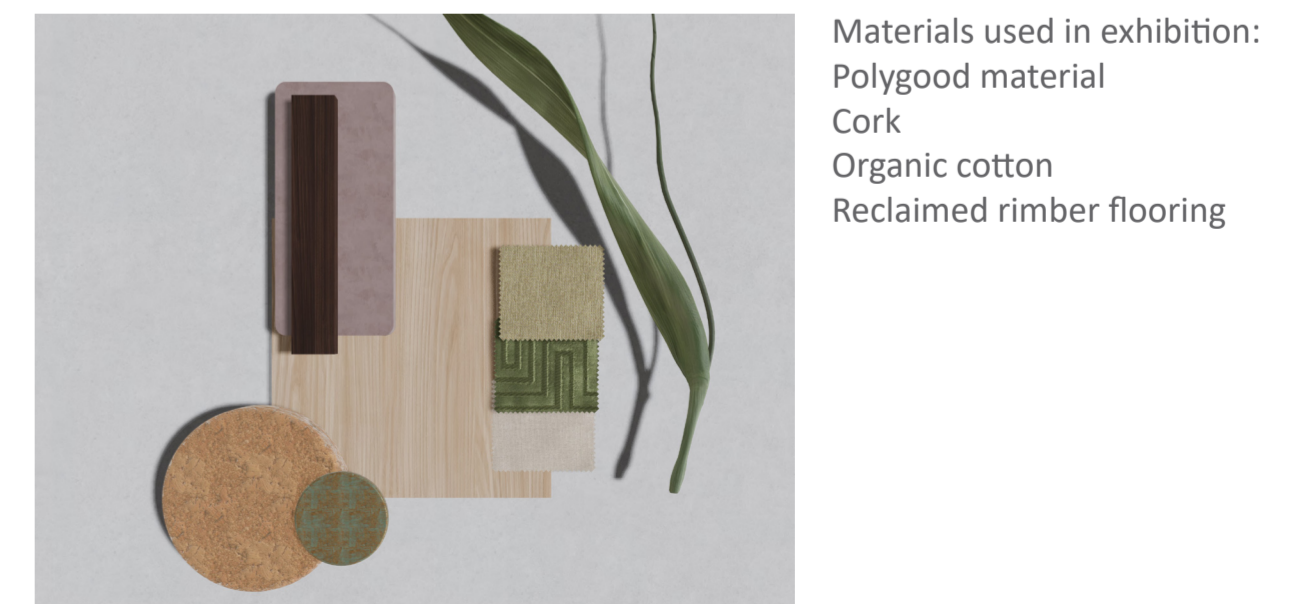
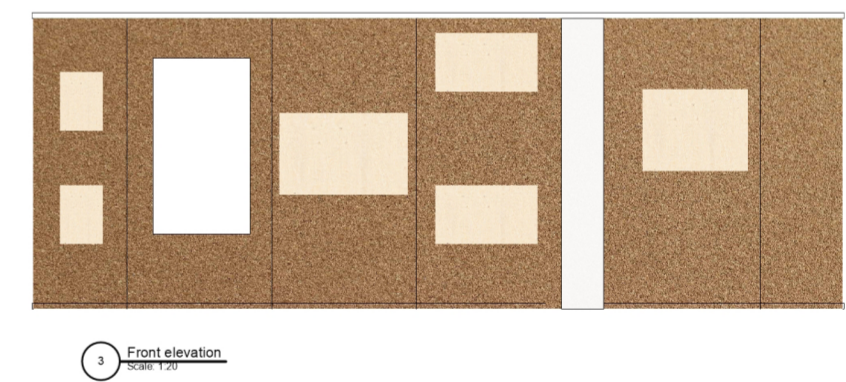
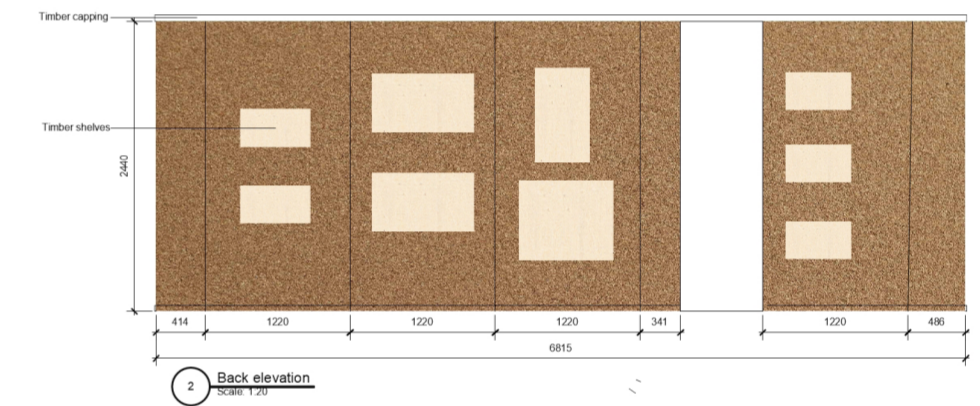
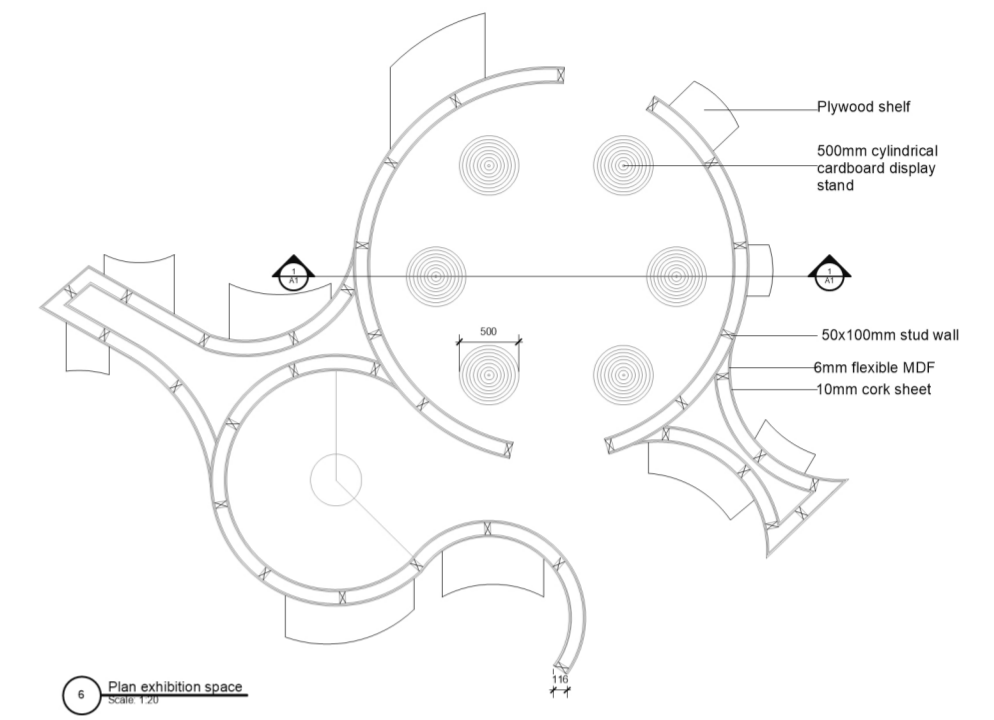
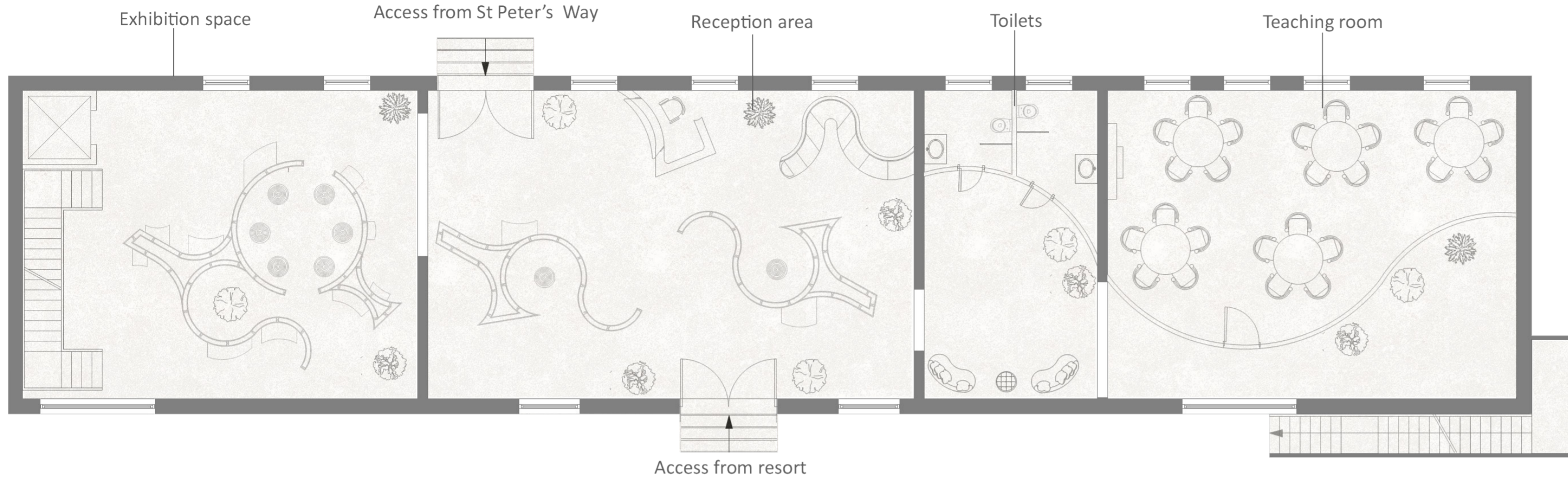
**RESORT AND PODS**



Materials used in pods:  
 Cork  
 Timber flooring  
 Living wall  
 Organic hemp

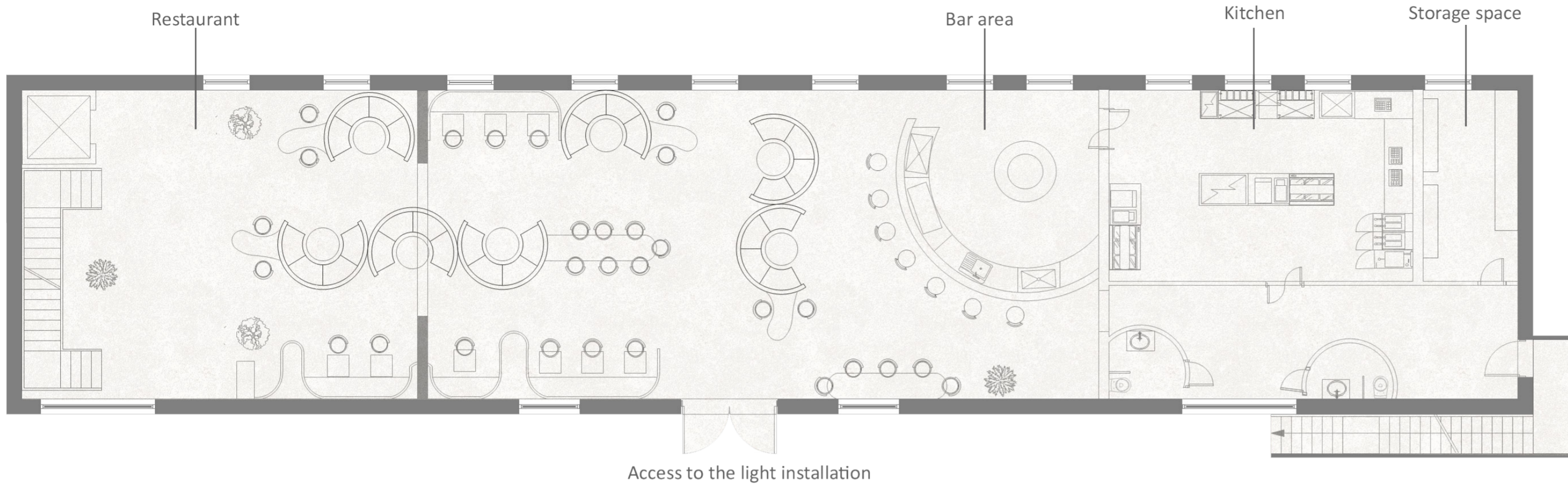


# GROUND FLOOR AND EXHIBITION PANELS DETAIL





**FIRST FLOOR AND SEATING DETAIL**



Materials used in restaurant:  
 Polygood material  
 Reco surface tiles  
 Stone  
 Organic hemp

