

WALK WITH ME

# THE A W A K E N I N G

THE AWAKENING” REDEFINES FUTURE INTERIORS BY CREATING A DYNAMIC SANCTUARY THAT PHYSICALLY MANIFESTS ENERGY AND SPIRITUAL EVOLUTION THROUGH IMMERSIVE, ORGANIC FORMS. SITUATED IN A REPURPOSED BRISTOL FIRE STATION, THE PROJECT FEATURES INNOVATIVE ELEMENTS LIKE A SUSPENDED TREE NET CONNECTING FLOORS AND A TRANQUIL ZEN ROOF GARDEN, FOSTERING PLAYFUL EXPLORATION AND MINDFUL REFLECTION. INTEGRATING DIVERSE SPACES—CREATIVE STUDIOS, MEDITATION PODS, COMMUNAL AREAS, AND A NATURAL SWIMMING POOL—THE AWAKENING RESPONDS TO EVOLVING SOCIAL AND EMOTIONAL NEEDS, EMPHASIZING MENTAL WELL-BEING, NEURODIVERSITY, AND COMMUNITY RESILIENCE. BY BLENDING TACTILE MATERIALITY WITH CONCEPTUAL ENERGY, IT CHALLENGES CONVENTIONAL INTERIOR TYPOLOGIES AND OFFERS A VISIONARY MODEL FOR FUTURE SPACES THAT PRIORITIZE EMOTIONAL HEALING, INTERGENERATIONAL CONNECTION, AND ECOLOGICAL AWARENESS. THIS PROJECT EXEMPLIFIES HOW INTERIORS CAN BECOME TRANSFORMATIVE ENVIRONMENTS, ACTIVATING NEW POSSIBILITIES FOR COLLECTIVE GROWTH AND HOLISTIC LIVING.

THE AREA AROUND THE SITE IS FILLED WITH ROAD SIGNS, WARNINGS AND SYMBOLS OF DIRECTION. MARKERS OF CONTROL, DEMAND, AND THE FAST PACED LOGIC OF HUSTLE CULTURE.

THEY SPEAK TO A SYSTEM THAT VALUES PRODUCTIVITY OVER PRESENCE, REGULATION AND REFLECTION.

IN CONTRACT, TUCKED AWAY ON WALLS AND LAMPPOSTS ARE HIDDEN STICKERS, GRAFFITI AND SMALL MOMENTS OF UNSANCTIONED ART - QUIET ACTS OF RESISTANCE, CREATIVITY AND FREEDOM.

THE AWAKENING DRAWS FROM THIS CONTRAST, CREATING A SPACE THAT INVITES PAUSE, EXPRESSION AND DEEPER CONNECTION. IT REJECTS DIRECTION IN FAVOUR OF INTUITIVE MOVEMENT, OFFERING AN ARCHITECTURE THAT HONOURS, THE HUMAN NEED TO FEEL, CREATE AND SIMPLY BE.



BENEATH THE SITE FLOWS THE HIDDEN RIVER FROM AN UNSEEN CURRENT THAT MIRRORS THE QUIET ENERGY AND UNTAPPED POTENTIAL WITHIN US.

LIKE THE RIVER SHAPING THE LAND FROM BELOW, OUR INNER WORLDS OFTEN GO UNNOTICED.

THE AWAKENING BRINGS BOTH INTO VIEW: CHANNELLING THE FELT, BUT INVISIBLE, AURAS OF THE COMMUNITY INTO TANGIBLE FORM.

THE DESIGN BECOMES A CONDUIT FOR REVEALING WHAT’S BEEN SUBMERGED — THE FLOW OF LIFE BENEATH THE CONCRETE, AND THE FLOW OF ENERGY WITHIN US ALL.

## THE STATION

ONCE A PLACE THAT FOUGHT THE FLAME, NOW A SPACE THAT SOOTHES THE SOUL — TRANSFORMED FROM URGENCY INTO SANCTUARY, WHERE THE FIRE WITHIN IS HONOURED, AND HEALING BEGINS.

## PROPOSAL

A SANCTUARY SPACE WITHIN A REPURPOSED BRISTOL FIRE STATION, SHAPED BY THE PHYSICAL FORMS OF ENERGY AND AURAS PERCEIVED DURING A SITE VISIT. THE ARCHITECTURE TRANSLATES THESE INVISIBLE FORCES INTO TANGIBLE, SPATIAL EXPERIENCES.

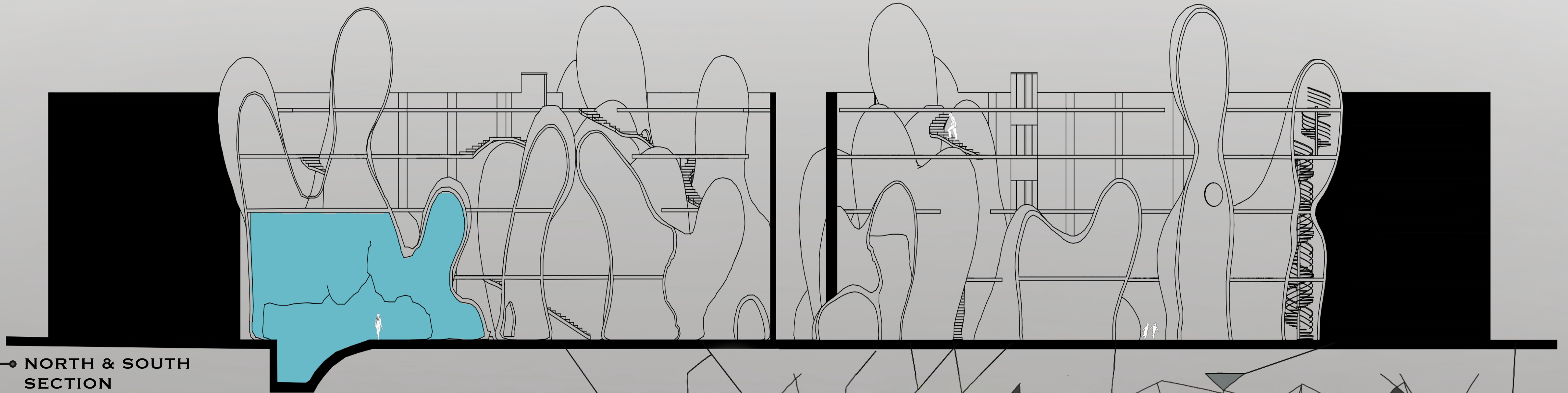
## AIMS

TRANSFORM ENERGETIC IMPRESSIONS INTO IMMERSIVE DESIGN.  
SUPPORT HEALING, CREATIVITY, AND INTERGENERATIONAL CONNECTION.  
EXPLORE THE RECIPROCITY OF ENERGY BETWEEN PEOPLE, SPACE, AND NATURE.  
REIMAGINE THE FUTURE OF HUMAN-CENTRED DESIGN THROUGH EMOTIONAL, ENERGETIC, AND SPATIAL SENSITIVITY.

## AUDIENCE & WHY

ALL AGES, ESPECIALLY THOSE SEEKING RESTORATION, PLAY, AND SELF-EXPRESSION.  
DESIGNED IN DIRECT RESPONSE TO THE SITE’S UNIQUE ENERGETIC FIELD— OFFERING A SPACE THAT RESONATES WITH AND UPLIFTS ITS COMMUNITY.

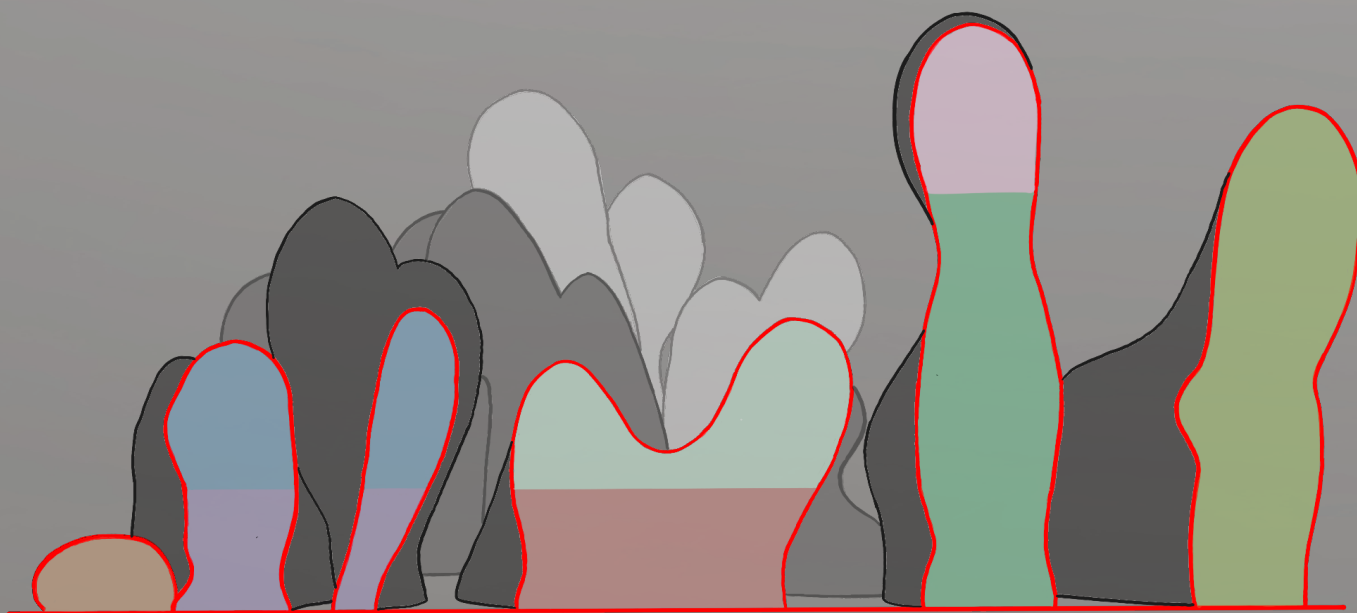




• NORTH & SOUTH SECTION

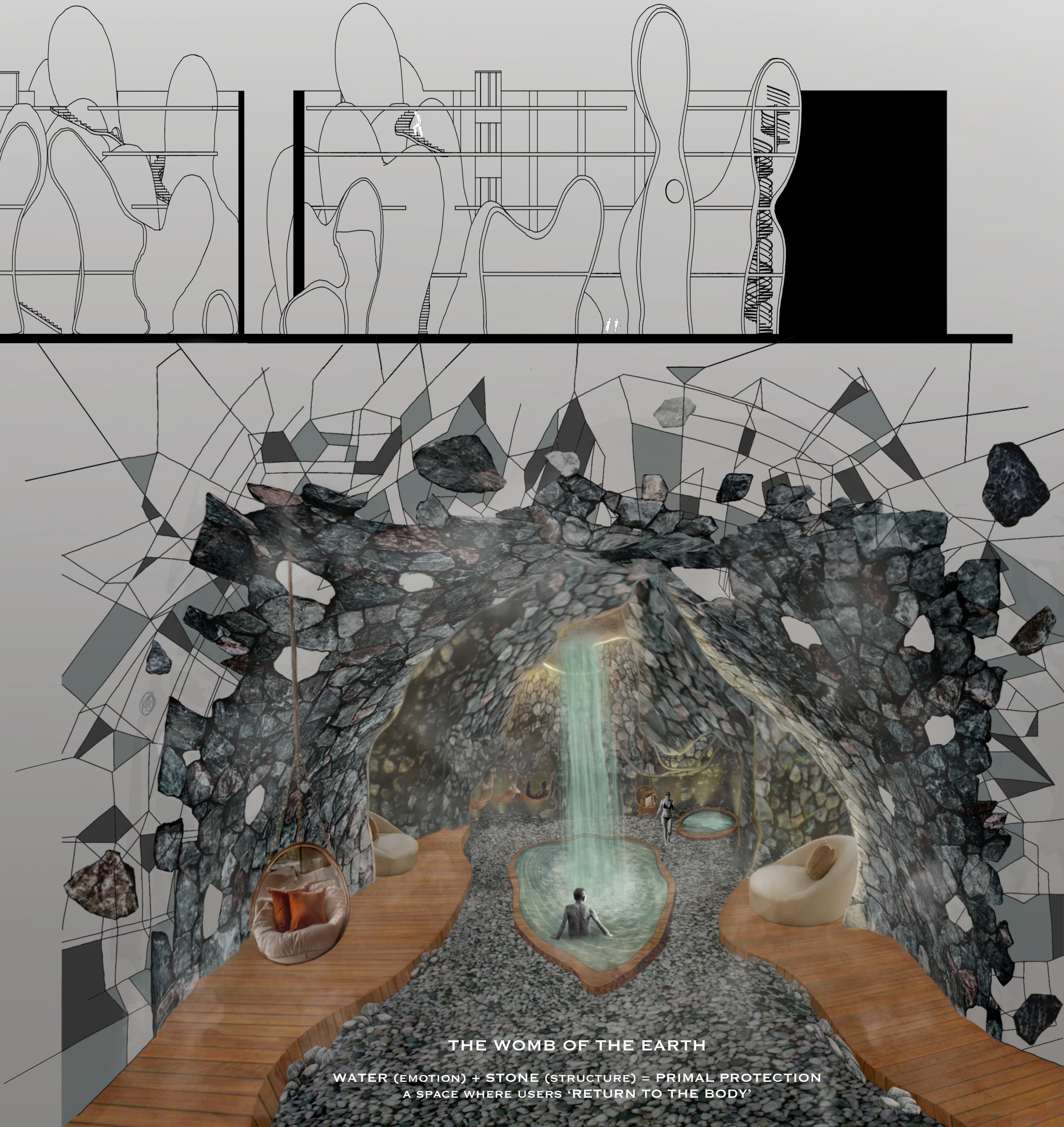


• EAST SECTION  
ZONING DIAGRAM



• NORTH SECTION  
ZONING DIAGRAM

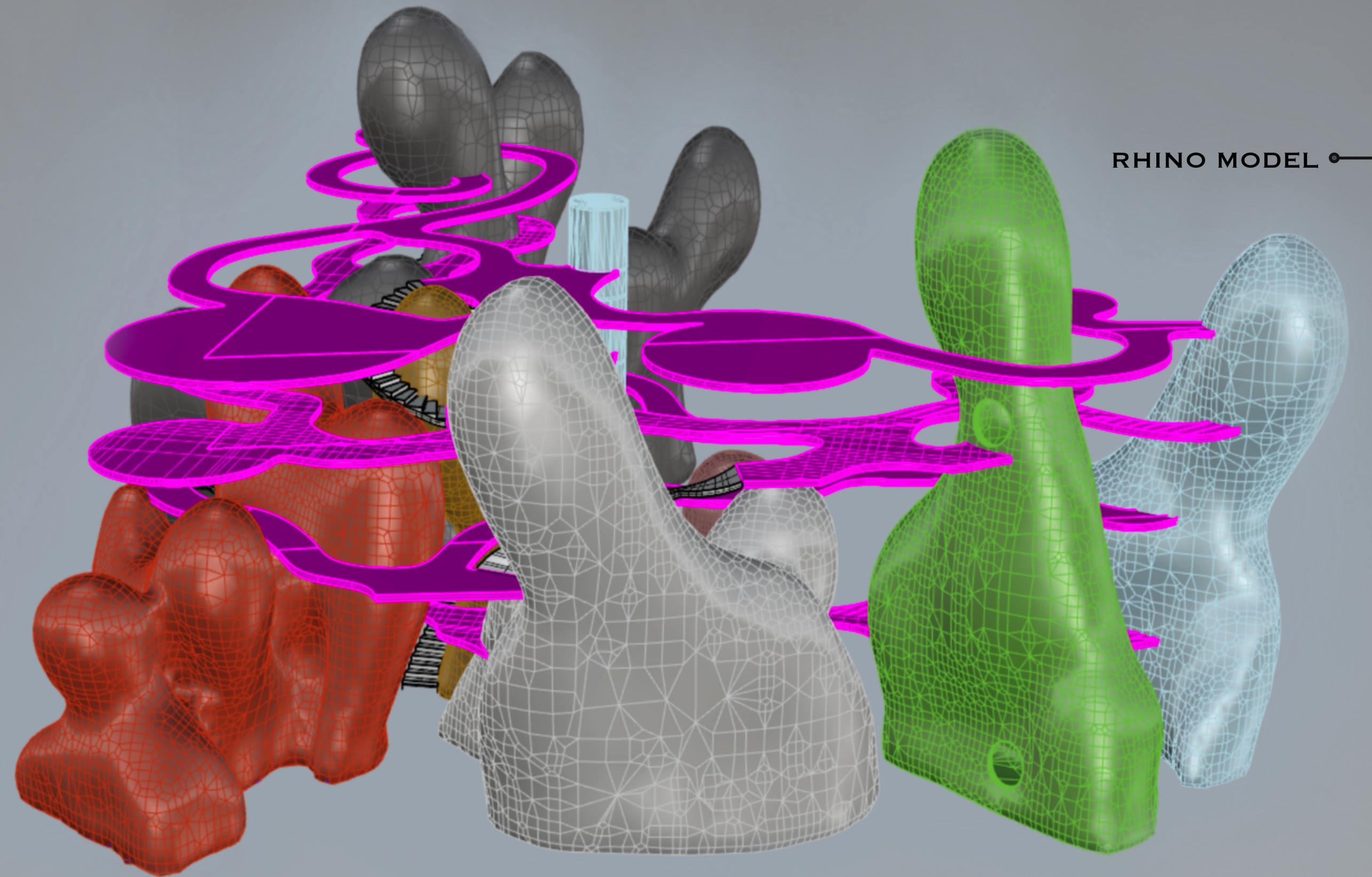
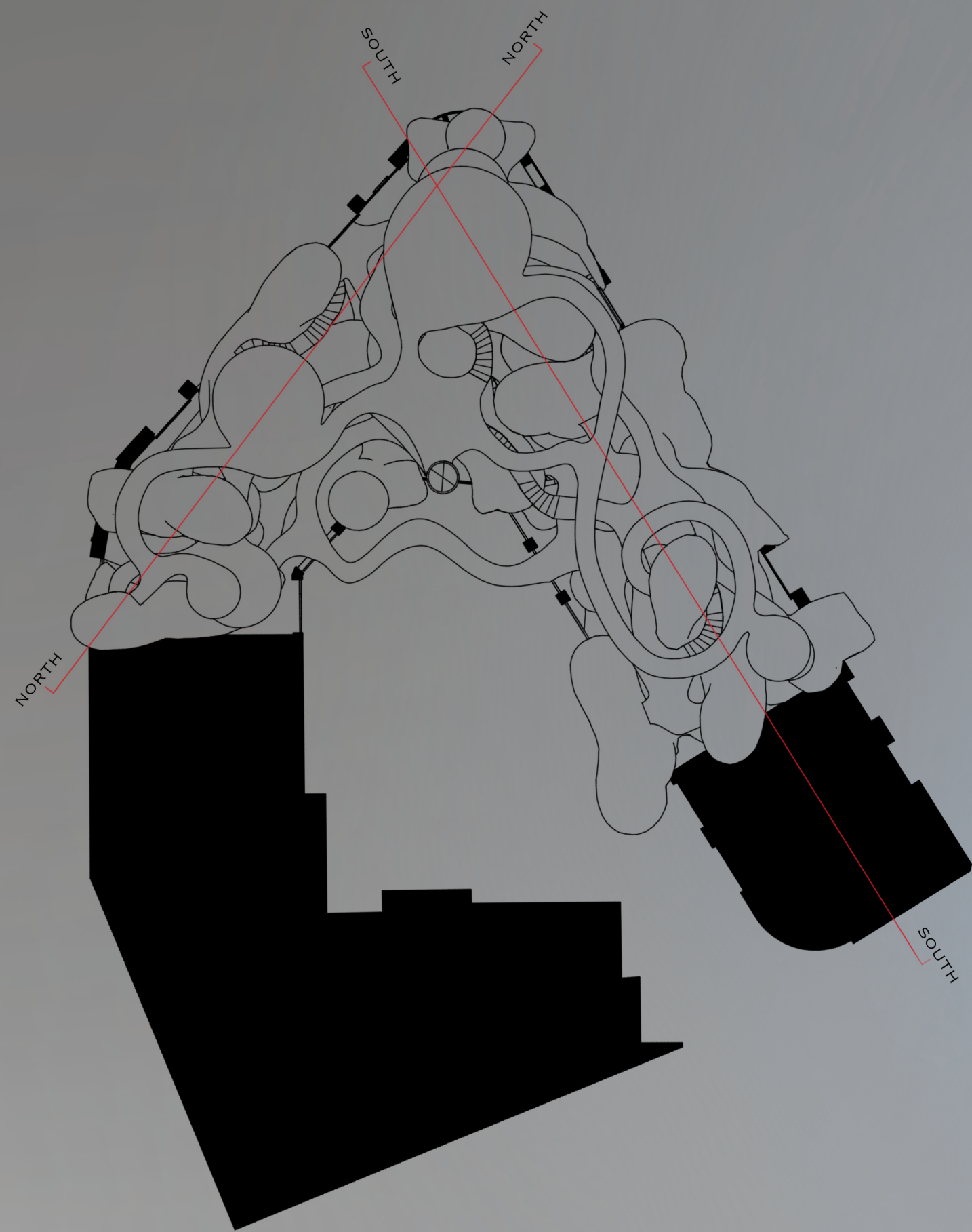
- |               |                      |                   |
|---------------|----------------------|-------------------|
| POOL          | POD 1                | NATURE EXPERIENCE |
| CHANGING ROOM | POTTERY              | SOUND HEALING     |
| CHILL         | TREE NET             | SHOE STORAGE      |
| AIR B&B       | STAINED GLASS PORTAL |                   |



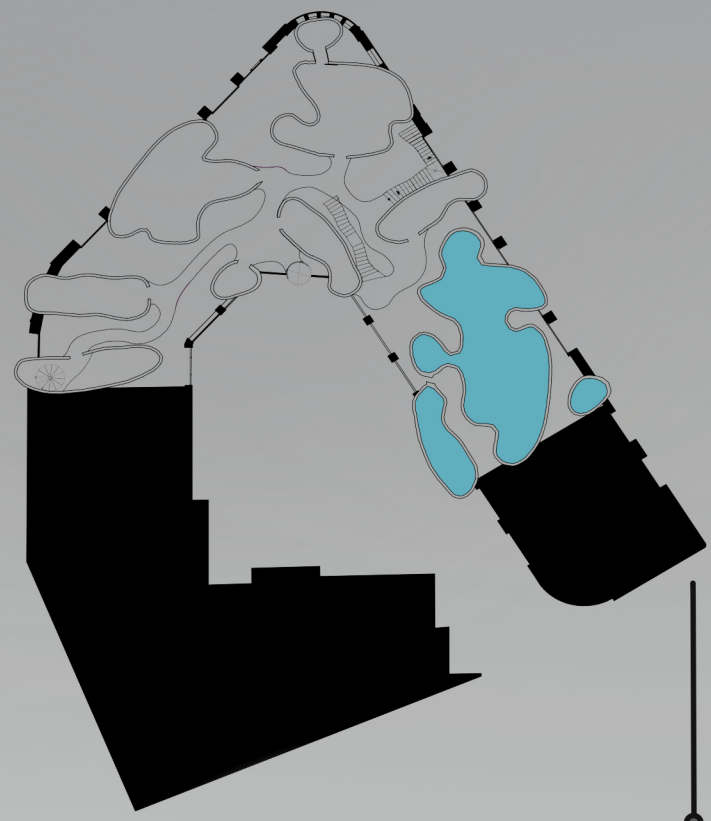
## THE WOMB OF THE EARTH

WATER (EMOTION) + STONE (STRUCTURE) = PRIMAL PROTECTION  
A SPACE WHERE USERS 'RETURN TO THE BODY'





GROUND FLOOR



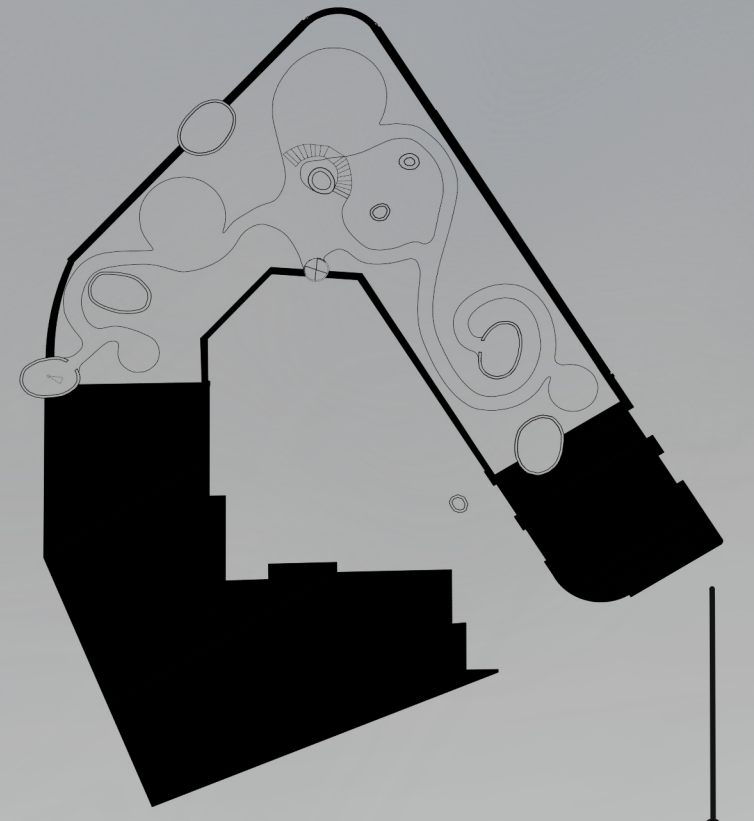
FIRST FLOOR



SECOND FLOOR



THIRD FLOOR



ROOF



## RECIPROCITY

REFLECTING THE MUTUAL EXCHANGE  
OF ENERGY BETWEEN PEOPLE,  
SPACE, AND NATURE.

## REVELATION

UNCOVERING WHAT'S HIDDEN:  
INNER POTENTIAL, EMOTIONS,  
AND UNSEEN ENERGIES.

## LIBERATION

BREAKING FREE FROM CONTROL AND  
HUSTLE CULTURE THROUGH INTUITIVE,  
CREATIVE, AND HEALING DESIGN.







THE ENERGY OF AURA  
CONCEPT



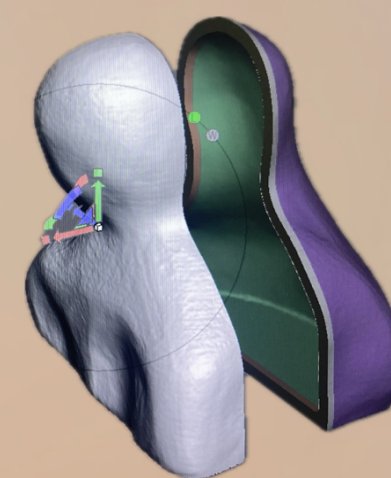
CLAY



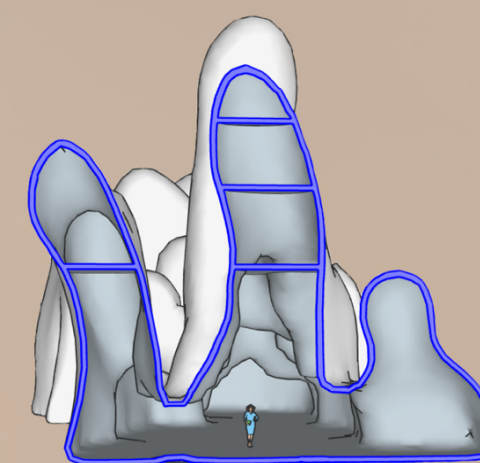
3D PRINTED



STRETCHED



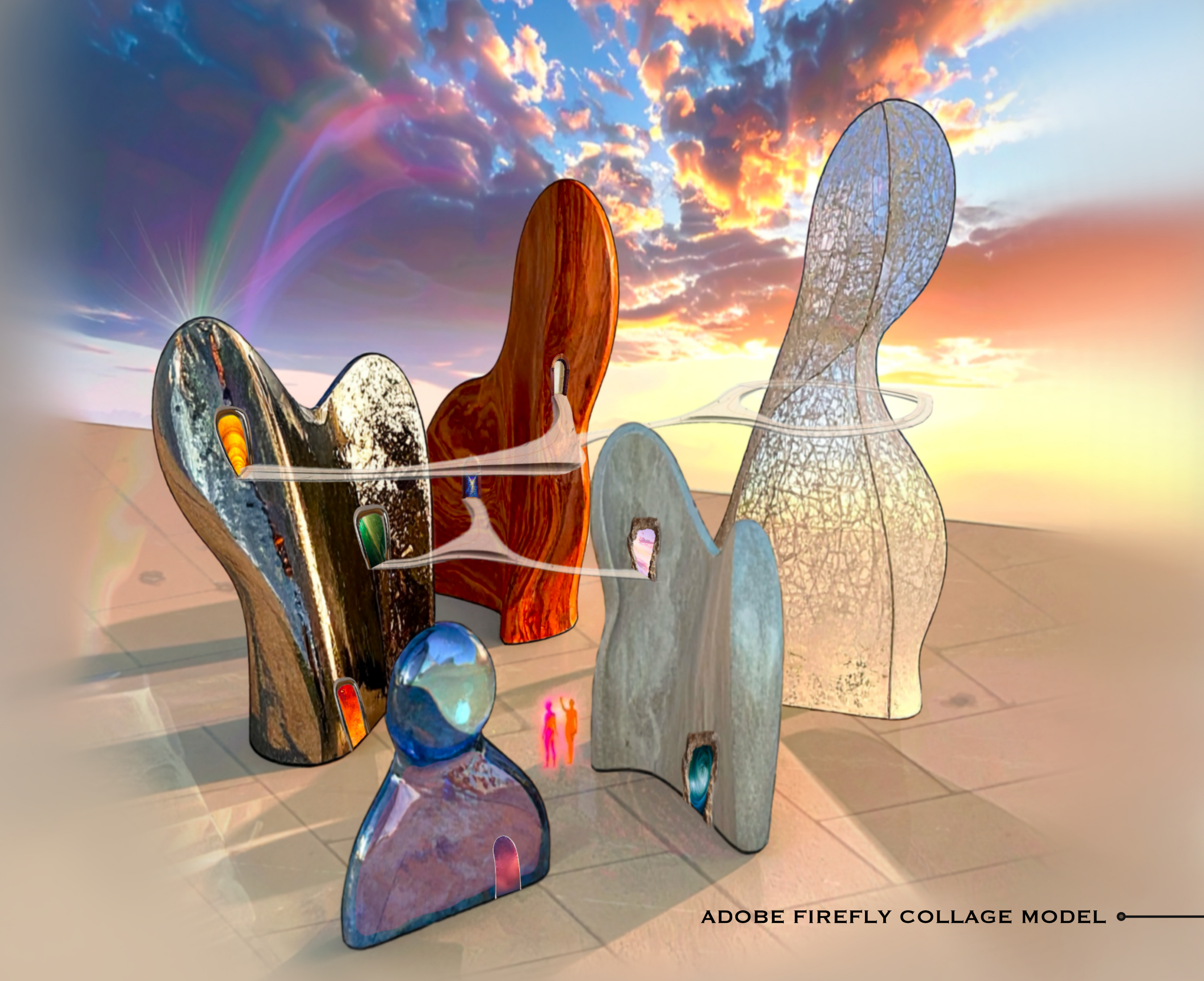
INTERNAL



LEVELS



CONNECTED



ADOBE FIREFLY COLLAGE MODEL