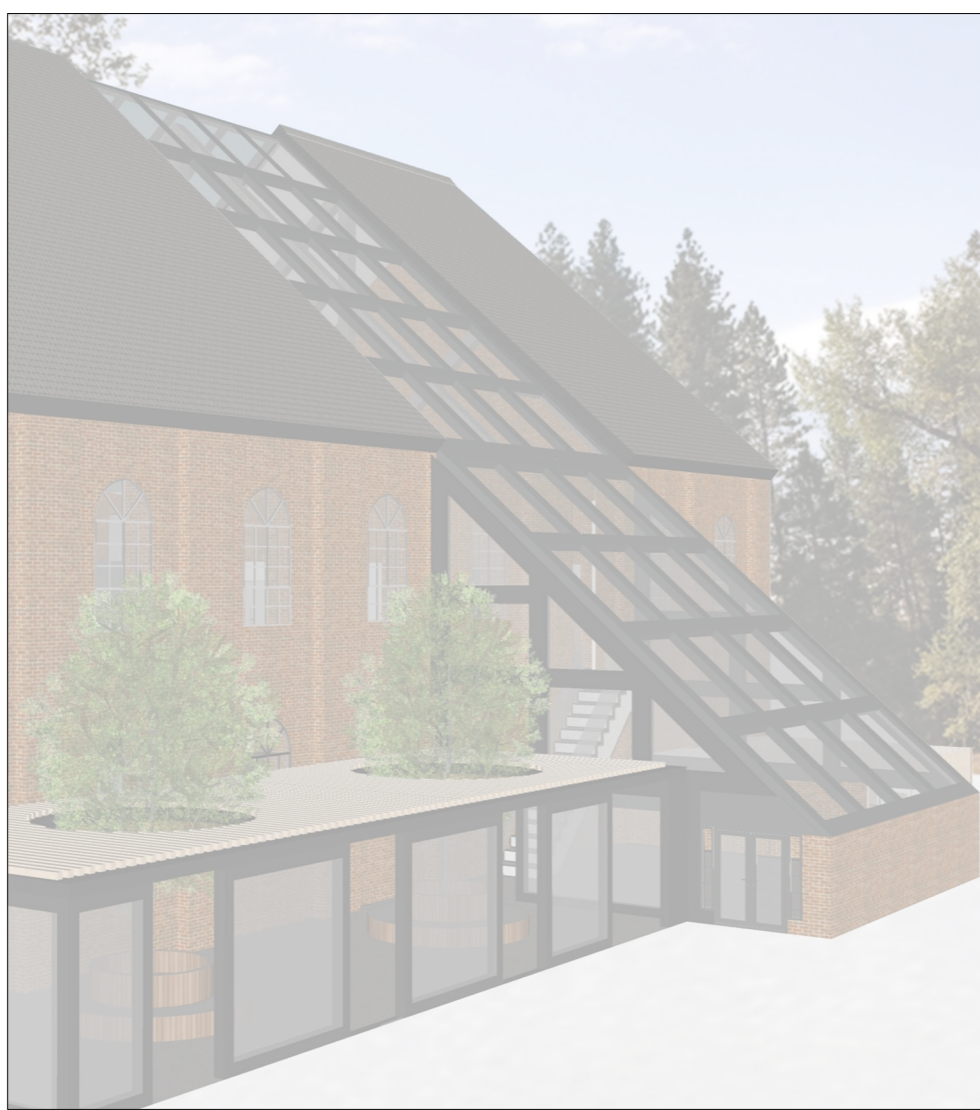
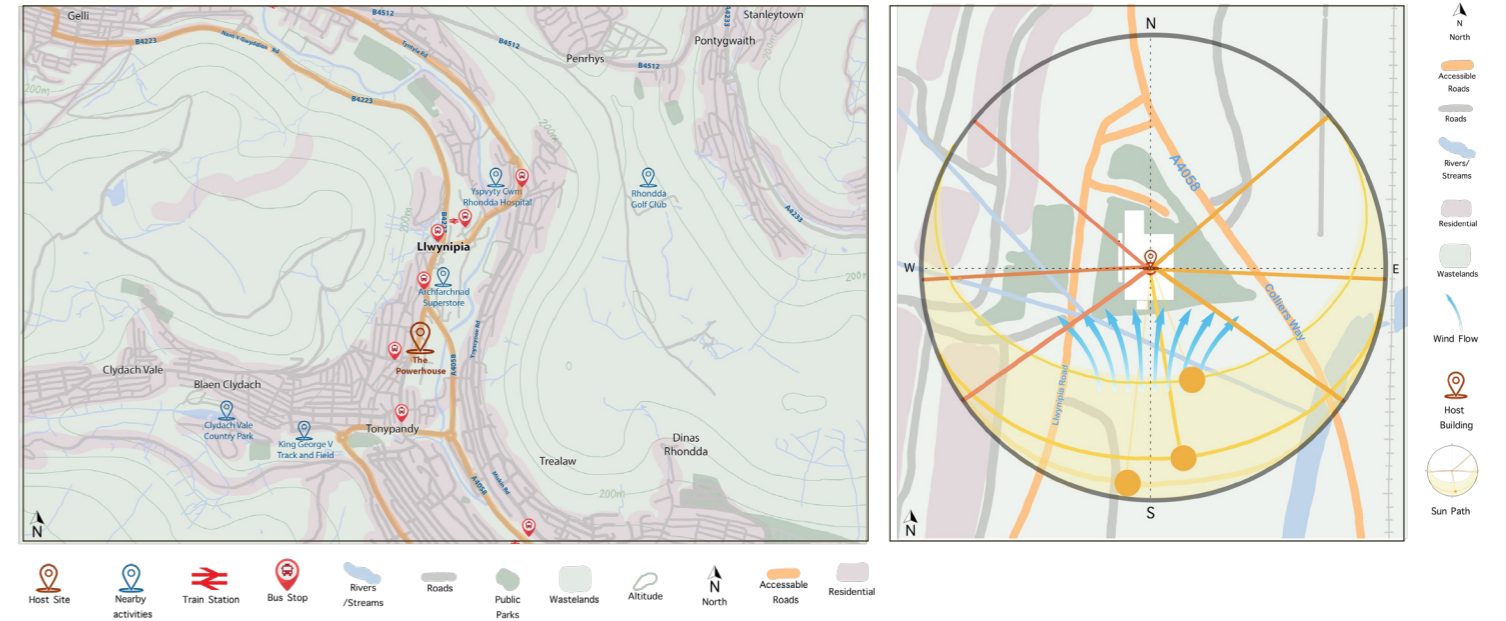




UNITY HUB



SITE ANALYSIS



Chloe Tutton – ST20207210 – ADZ6003 – Unity hub / Hyb Unoliaethau

DESIGN BRIEF

The unity hub, as its name implies serves as a central gathering place fostering a sense on community and togetherness for the residents of Rhondda Cynon Taf. This community centre is set to undergo a transformation taking shape within the historic grade 2 listed building known as The Powerhouse in Llwynipia, Rhondda. The hub offers a range of facilities, organised under the categories of **Perform, Refresh and Support**.

Spread throughout the building, featuring images and historical artifacts that highlight the rich history of both the building and its surrounding area. On the ground level, In this building, the **performance** aspect will be represented by the activity rooms located on the mezzanine level, featuring glass windows that allow patrons to observe the ongoing activities in the hire rooms above, fostering a sense of inclusivity.

the **refresh** section will house a café supporting local produce, providing a welcoming environment for people to unwind and enjoy quality refreshments. This space is designed to be a comfortable retreat for the community.

Lastly, the **support** component encompasses a variety of amenities, including a library a retail pop-up shop and workshop rooms available for diverse activities.

The Unity Hub is poised to become a multifaceted centre, offering not only a place for relaxation and enjoyment but also resources and spaces to support a wide array of community endeavours.



HOST BUILDING ANALYSIS

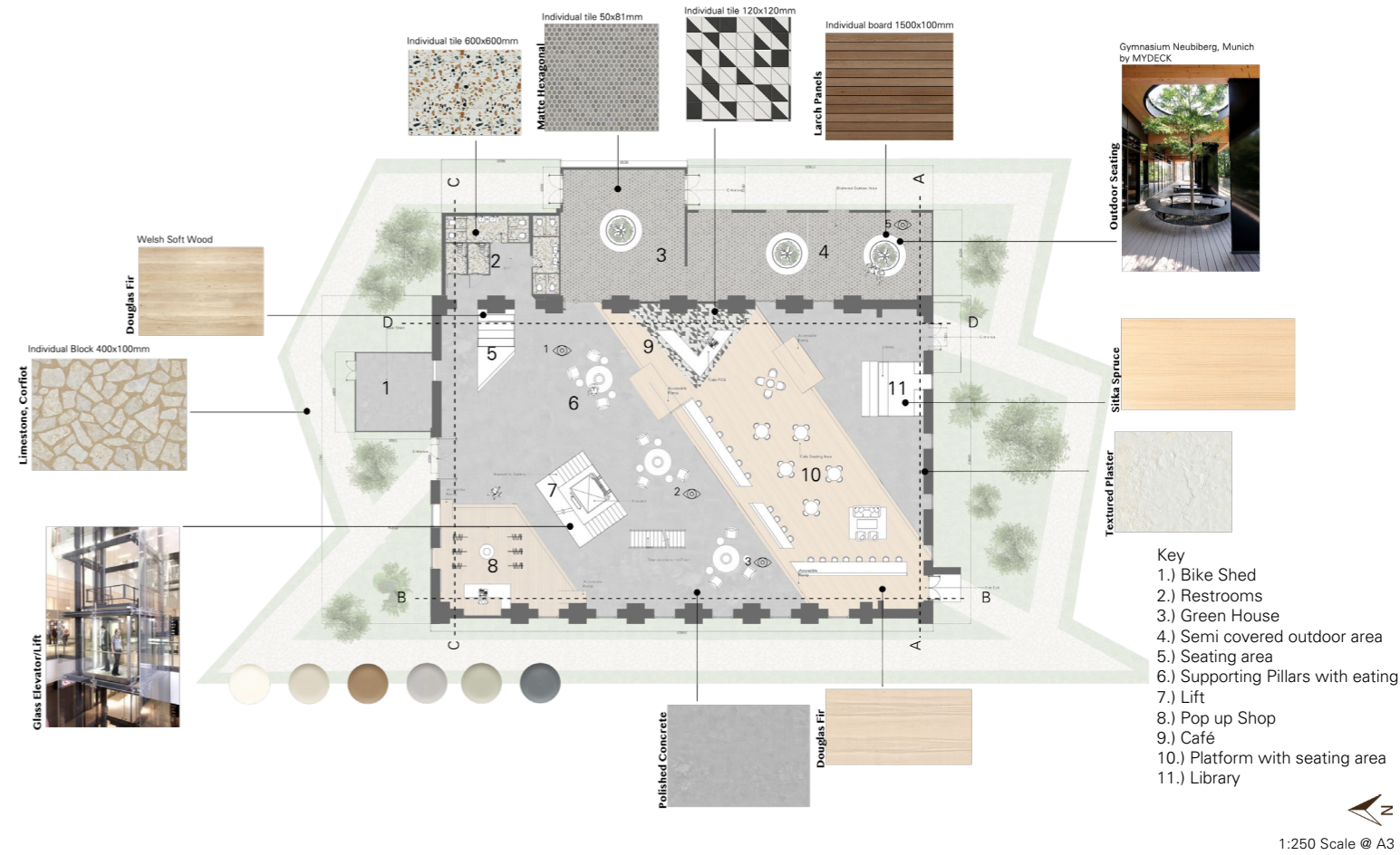


- Building Characteristics:**
 - North-facing structure
 - Accessibility:
 - Convenient access via roads
 - Local amenities in close proximity
- Residential surrounding area**
- Historical Significance:**
 - Grade 2 listed building
- Condition:**
 - Very poor condition
 - Currently inhabitable, requiring extensive repair
- Surroundings:**
 - Overgrown greenery
 - Susceptible to flooding
- Specifics:**
 - Blockwork infill in existing window openings (partial or complete)
- Structural Elements:**
 - Steel trusses
 - Timber beam purlins
 - Roofing Issues:
 - Missing slate roof in areas
 - Timber boarding missing in areas
- Wall and Construction Features:**
 - Parapet wall demolished
 - Blockwork and steel circular portal frame construction on north elevation
- Out-Buildings:**
 - Single-story out-building submerged in water on south elevation
 - Additional single-story out-building, a later addition to the main building
 - Constructed from blockwork with a concrete flat roof on the west elevation

Chloe Tutton – ST20207210 – ADZ6003 – Unity hub / Hyb Unoliaethau

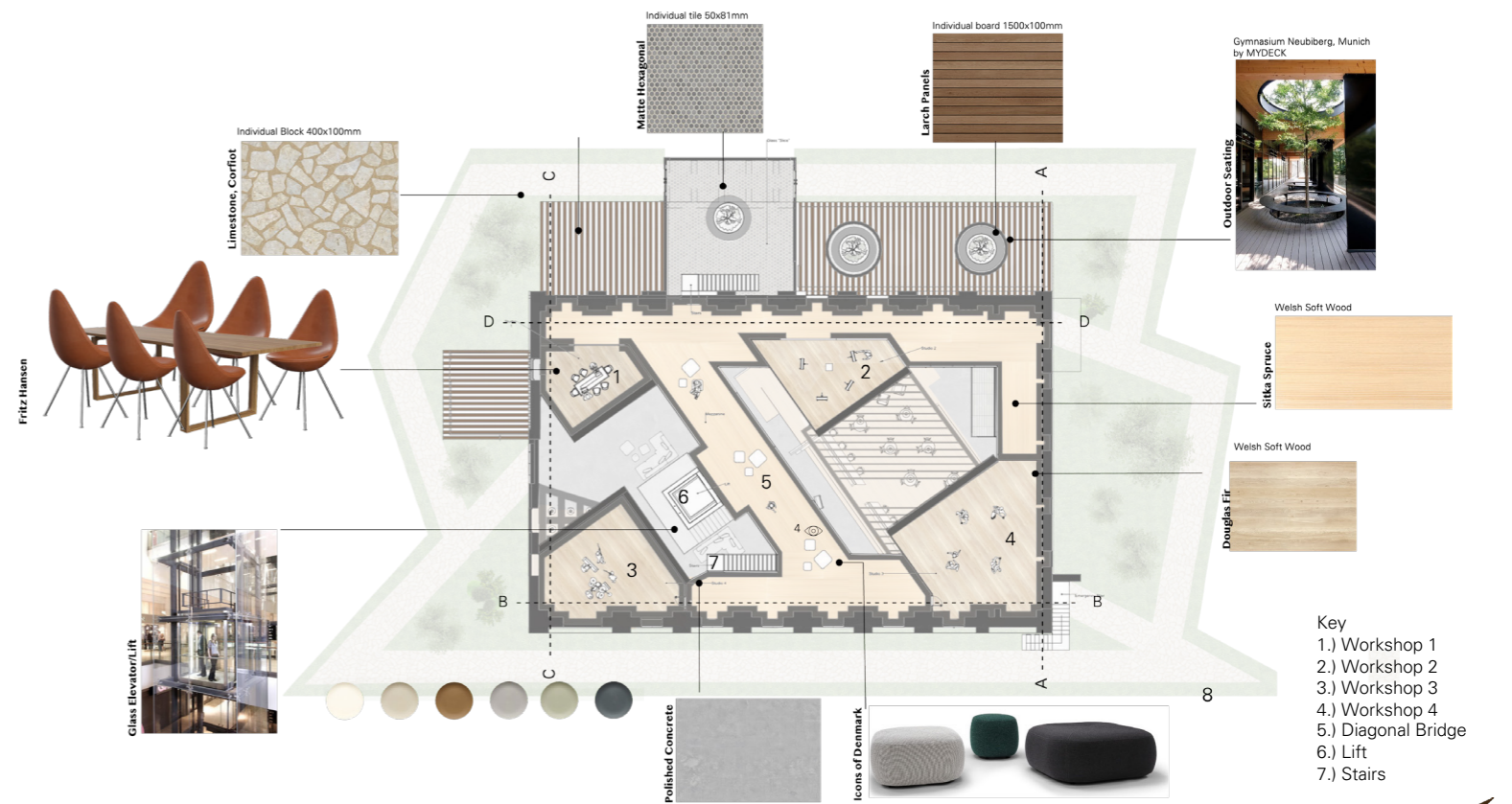


Utilising the power of black to craft a setting that radiates elegance, boldness, and sophistication. To complement this rich hue with earthy brown tones to instil a sense of wholesomeness and warmth, creating an inviting atmosphere. To maintain a balance of pristine and contemporary aesthetics in a spacious open-plan environment, introduce classic soft colours such as ivory and white. This combination not only ensures a light and airy ambiance but also adds a touch of timeless sophistication. Furthermore, infusing subtle splashes of green to seamlessly integrate elements of nature, aligning with our commitment to environmental friendliness within our establishment. This harmonious blend of colours promises a space that is not only visually stunning but also environmentally conscious.

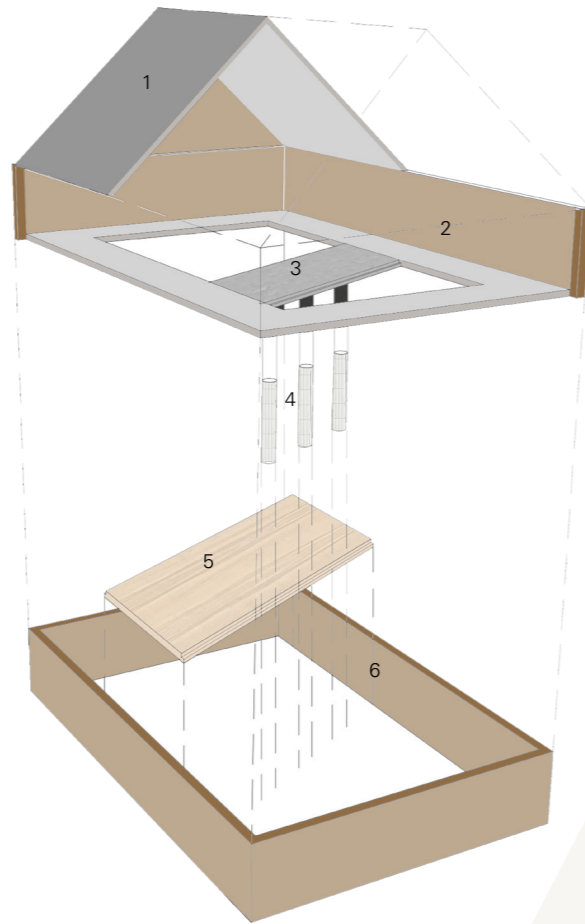


Implementing Biophilic design approaches within the industrial structure to craft a warm, inviting, and tranquil atmosphere.

Establishing tiered spaces to optimise the vertical space of the building.

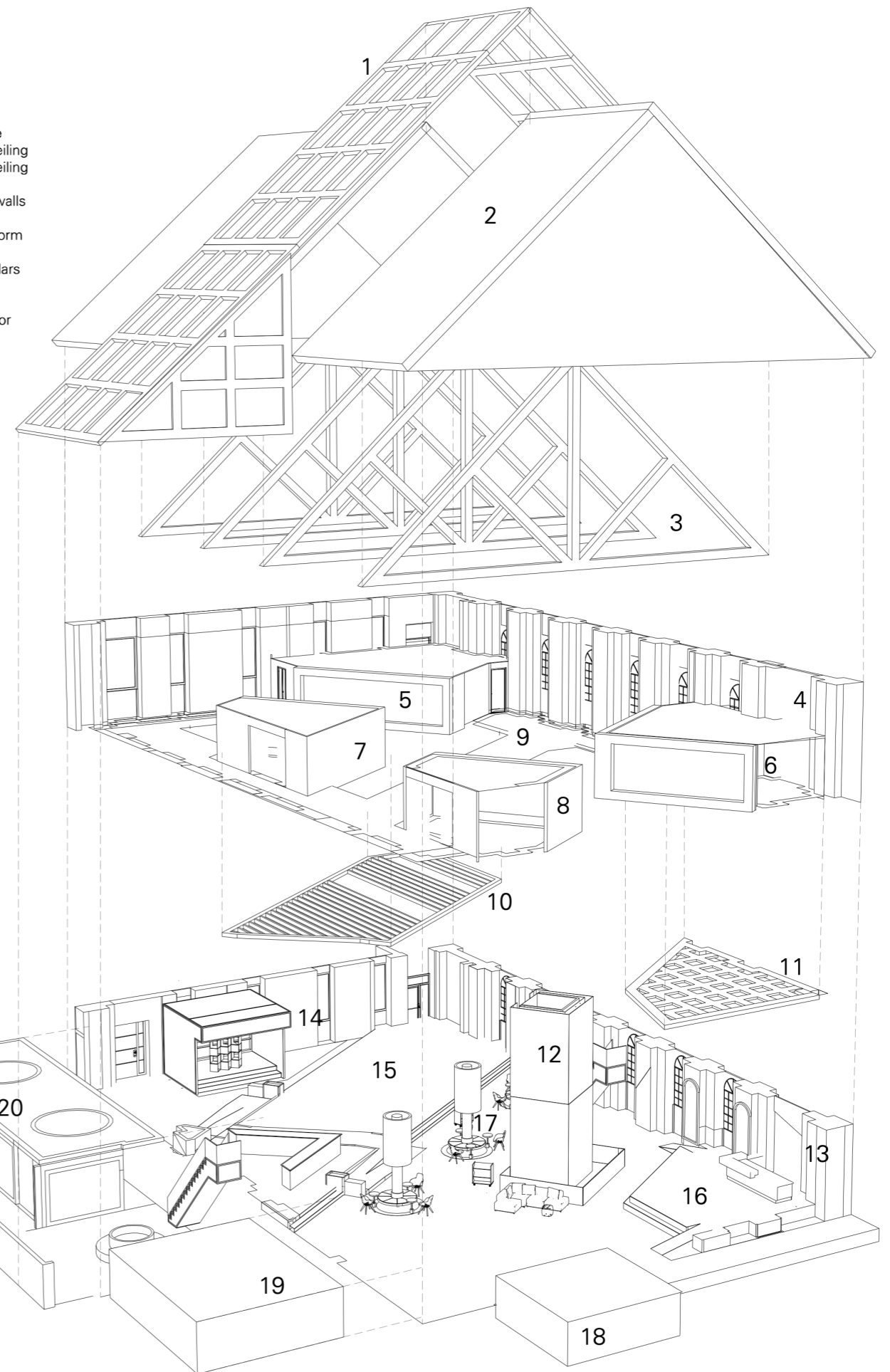


In order to distinguish between the existing and contemporary aspects of the structure, diagonal sections have been strategically introduced to the space. This design intervention serves the dual purpose of fostering separation and instilling a sense of spatial definition within the expansive building. While preserving the openness and airiness inherent in the overall open-plan architecture, the incorporation of these diagonal elements introduces a thoughtful balance by creating distinct divisions and well-defined sections. The result is a harmonious blend of cosy, intimate areas and open, expansive spaces, transforming the large building into a dynamic environment that caters to both individual privacy and collaborative functionality.

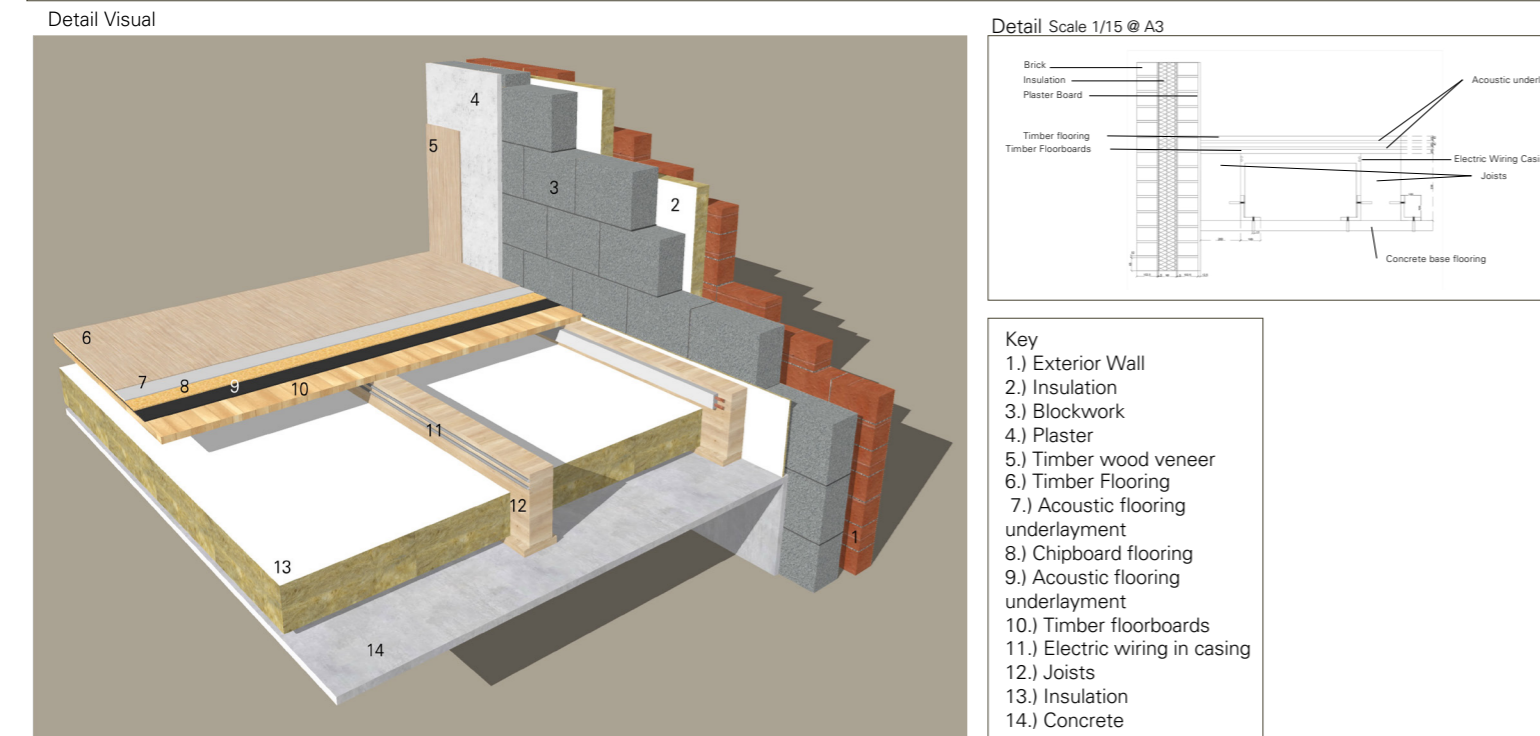


- Key
- 1.) Roof
 - 2.) 1st floor walls
 - 3.) Diagonal Bridge
 - 4.) Supporting Pillars
 - 5.) Ground floor diagonal Platform
 - 6.) Ground floor walls

- Key
- 1.) Window Roof
 - 2.) Roof
 - 3.) Trusses
 - 4.) 1st Floor walls
 - 5.) Workshop 1
 - 6.) Workshop 2
 - 7.) Workshop 3
 - 8.) Workshop 4
 - 9.) Diagonal Bridge
 - 10.) Suspended Ceiling
 - 11.) Suspended Ceiling
 - 12.) Lift
 - 13.) Ground floor walls
 - 14.) Library
 - 15.) Diagonal Platform
 - 16.) Pop Up Shop
 - 17.) Supporting Pillars
 - 18.) Bike Shed
 - 19.) Restrooms
 - 20.) Indoor/ Outdoor Seating area



MICRO TECTONIC



SECTION A



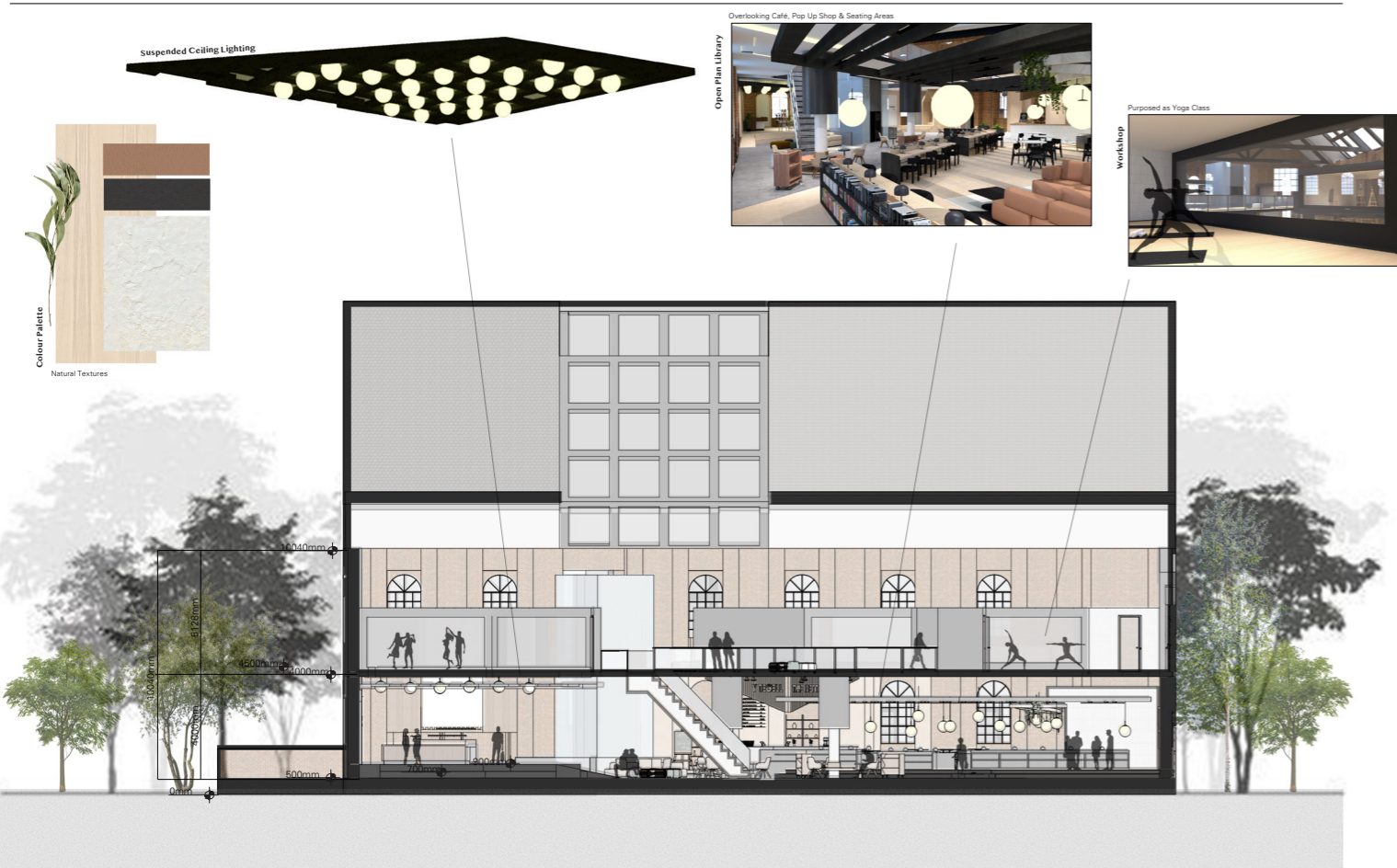
Scale 1/150 @ A3

SECTION C



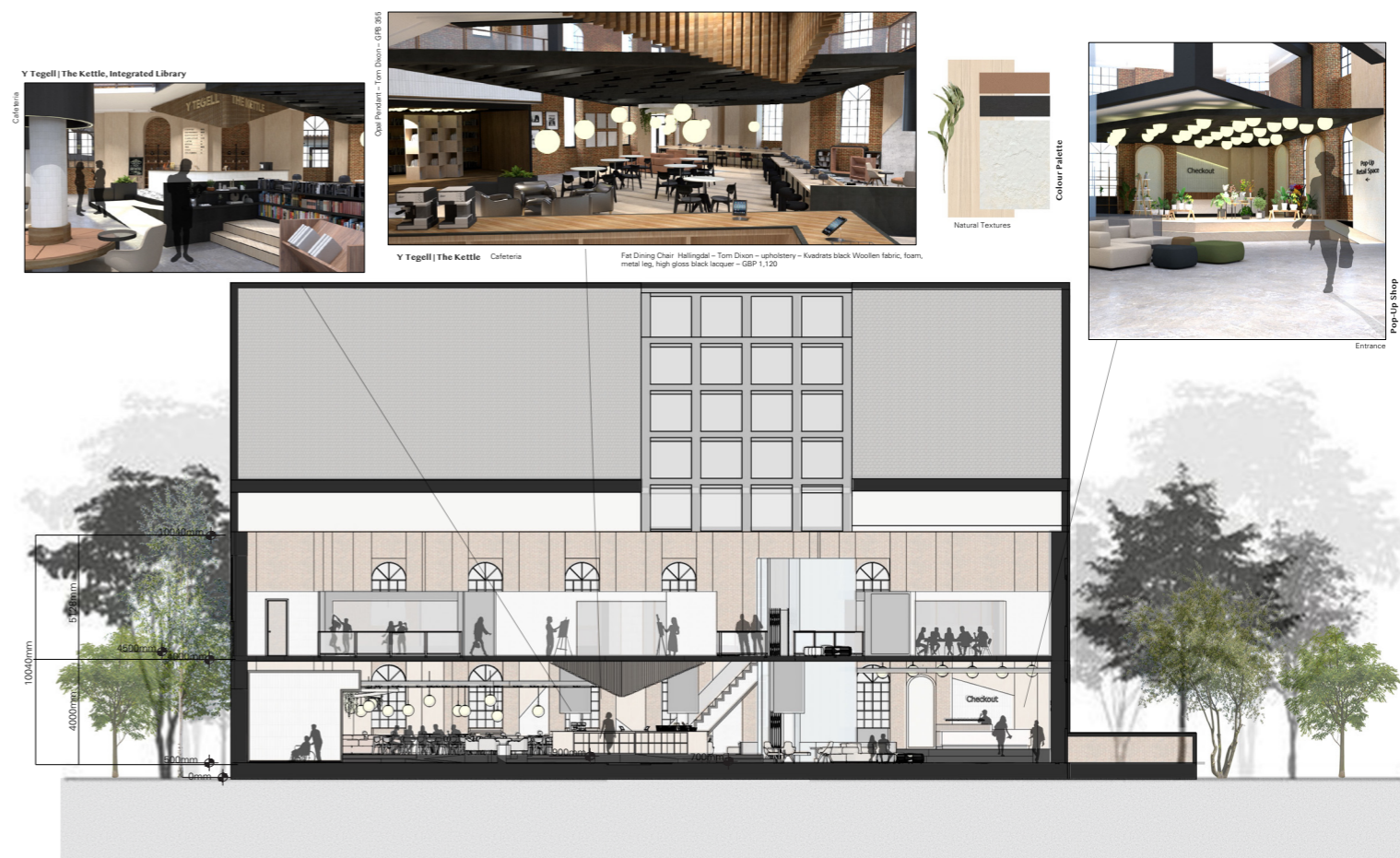
Scale 1/150 @ A3

SECTION B



Scale 1/150 @ A3

SECTION D



Scale 1/150 @ A3

VISUAL 1 



Chloe Tutton – ST20207210 – ADZ6003 – Unity hub / Hyb Unoliaethau

VISUAL 3 



Chloe Tutton – ST20207210 – ADZ6003 – Unity hub / Hyb Unoliaethau

VISUAL 2 



Chloe Tutton – ST20207210 – ADZ6003 – Unity hub / Hyb Unoliaethau

VISUAL 4 



Chloe Tutton – ST20207210 – ADZ6003 – Unity hub / Hyb Unoliaethau