

MY WORK EXPLORES NACRE, NATURE'S FORM OF ARMOUR. MOTHER-OF-PEARL ACTS AS A SYMBOL FOR TENACITY AND RENEWAL. OYSTERS ARE HARVESTED ON-SITE TO ERADICATE ANY MICROPLASTIC CONSUMPTION. THE SPACE CONSISTS OF A RESTAURANT, WHERE YOU ARE IMMERSSED INTO OYSTER TASTING BASED ON THE EARTH, FIRE, WATER AND AIR, THE SPATIAL DESIGNS CORRELATING WITH THESE WHILST EMANATING THE FLESH OF AN OYSTER. THE OTHER PART OF THE SPACE IS OCCUPIED WITH A WORKSHOP, INSPIRED BY THE EXTERIOR OF THE SHELL, WHERE THE WASTE OYSTER SHELLS ARE REPURPOSED INTO JEWELLERY, CREATING A CLOSED LOOP ETHOS. THIS PROJECT ADDRESSES NOT ONLY LOSS IN BIODIVERSITY, BUT THE BIOACCUMULATION OF MICROPLASTICS WITHIN MARINE WILDLIFE AND ECOSYSTEMS. OYSTERS ACT AS FILTER FEEDERS WITHIN THEIR ENVIRONMENT, THEREFORE, ARE HERALDS FOR ENVIRONMENTAL CHANGE, CLEANSING THEIR WATERS FOR OTHER CREATURES TO THRIVE. NACRE CHALLENGES PRECONCEPTIONS ABOUT THE LUXURIOUS NATURE OF OYSTERS, FOCUSING IT TOWARDS HEALING OUR PLANET.



WHAT WE DON'T SEE,
WE CONSUME.



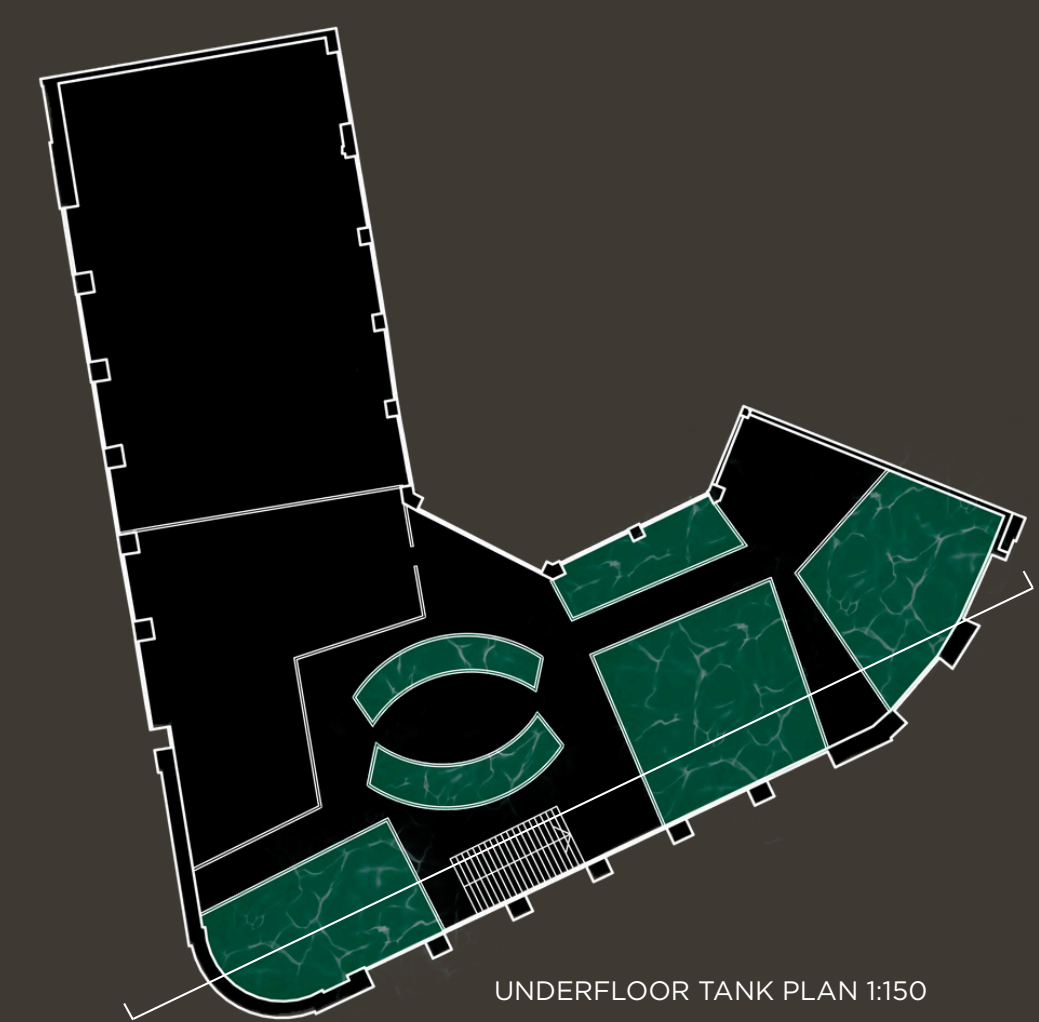
OYSTERS, AS LIVING CREATURES, FOOD AND MATERIALS, HOLD MANY LAYERS OF MEANING TO THEM.

NACRE OFFERS AN OPPORTUNITY TO ENTER INTO THEIR WORLD. OPENING THE SHELL, YOU ARE GREETED WITH THE BEAUTY WITHIN. THEIR DELICATE FLESH INSPIRES THE AESTHETICS OF THE FOUR TASTING ZONES, BASED ON THE FOUR ELEMENTS, AS WELL AS THE MAIN DINING AREA.

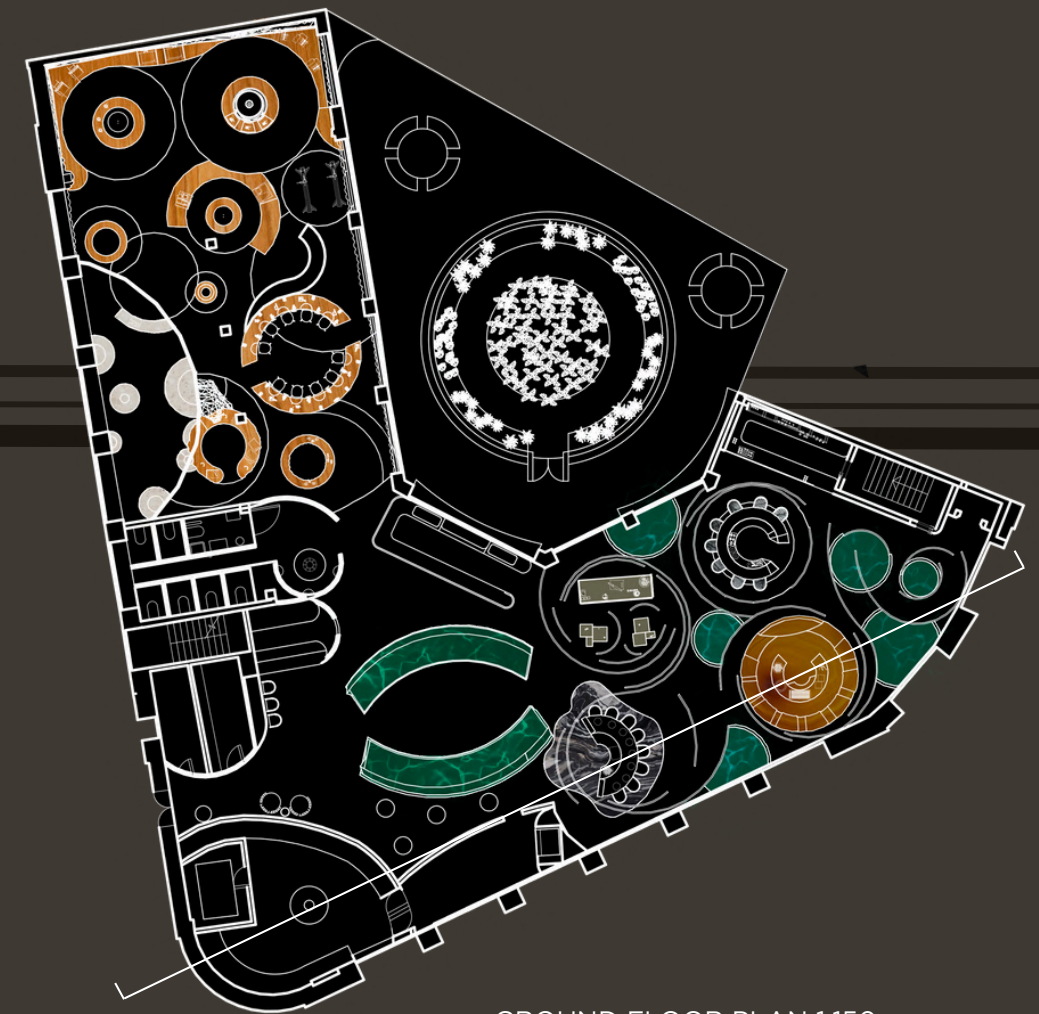
MYSTERIOUS, LUSTROUS, AND FULL OF HIDDEN POTENTIAL, OYSTERS EMBODY THE RICHNESS AND IMPORTANCE OF NATURE AND ITS POWER.

THE EXPERIENCE IS ENDLESS DUE TO THE CLOSED-LOOP NATURE, EACH SHELL IS REPURPOSED, WHETHER THAT BE JEWELLERY, INTEGRATED INTO THE SPACE IN THE FORM OF MATERIALS, REINTRODUCED INTO THE TANKS, OR SHARED WITH OTHER COMMUNITIES. THE STORY OF THE OYSTER LIVES ON.

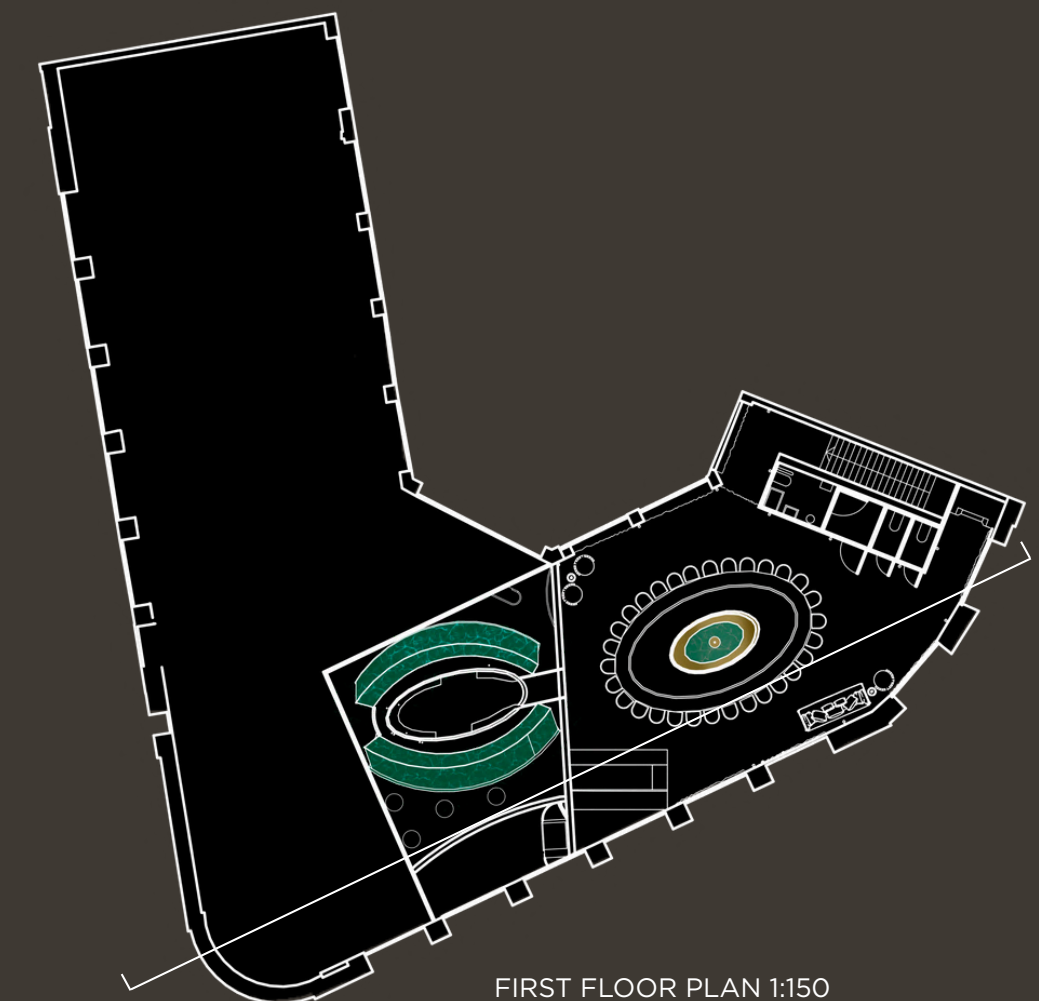
NACRE WAS CREATED TO CELEBRATE NOT ONLY OYSTERS, BUT ALSO THE BEAUTY OF THE NATURAL WORLD WE INHABIT.



UNDERFLOOR TANK PLAN 1:150



GROUND FLOOR PLAN 1:150



FIRST FLOOR PLAN 1:150



NACRE IS AWARE THAT CULTIVATING ITS OWN OYSTERS IN TANKS PRESENTS ITSELF WITH CHALLENGES AND CONTROVERSY, SPARKING THE RELEVANT CONVERSATIONS.

FOR A LONG TIME, OYSTERS HAVE BEEN A SYMBOL OF PURITY EMBEDDED INTO NATURE. NOW THEY ABSORB MICROPLASTIC PARTICLES FROM THE OCEAN. THIS FORM OF POLLUTION SERVES AS REMINDERS OF HOW HUMANS HAVE IMPACTED THE PUREST CREATURES IN NATURE.

NACRE FACES THIS ISSUE THROUGH THE FARMING OF OYSTERS, THE RESTAURANT REPLICATES THE NATURAL CONDITIONS THAT THE SHELLFISH SHOULD INHABIT, WITHOUT CONTAMINATION, PROTECTING BOTH THE OYSTER AND THOSE WHO ENJOY THEM.



MAIN DINING
AREA

TANKS AND
OYSTER
TASTING
PARTITIONS

JEWELLERY
WORKSHOP
AND OYSTER
TASTING
EXPERIENCE

UNDERGROU
ND OYSTER
TANKS



TABBY CONCRETE

FOR SOME OF MY WALL AND FLOOR FINISHES, I HAVE USED TABBY CONCRETE, A MATERIAL MADE BY REPURPOSING OYSTER SHELLS, TO ENCAPSULATE THE CLOSED CYCLE ETHOS OF NACRE.

THE DINING EXPERIENCE COMMENCES WITH THE IMMERSION OF THE GUESTS, WHERE THEY WITNESS THE HARVESTING OF THE OYSTERS, BRIDGING THE GAP BETWEEN FOOD AND ITS ORIGIN. THIS ALLOWS FOR AN OPPORTUNITY OF REFLECTION, SHIFTING THE EXPERIENCE FROM PASSIVE CONSUMPTION TO A FORM OF CONSCIOUS PARTICIPATION.

THE DINERS THEN MOVE THROUGH FOUR ZONES, INSPIRED BY FIRE, EARTH, WATER AND AIR, EACH DESIGNED TO STIMULATE THE SENSES AND TO RECONNECT WITH THE NATURAL WORLD.



THE TABBY MIX IS LEFT IN MOLDS TO
CREATE A DURABLE MATERIAL



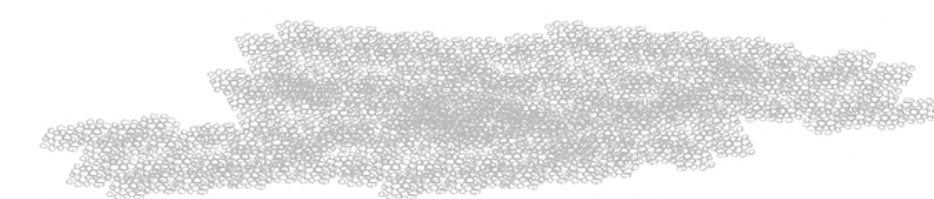
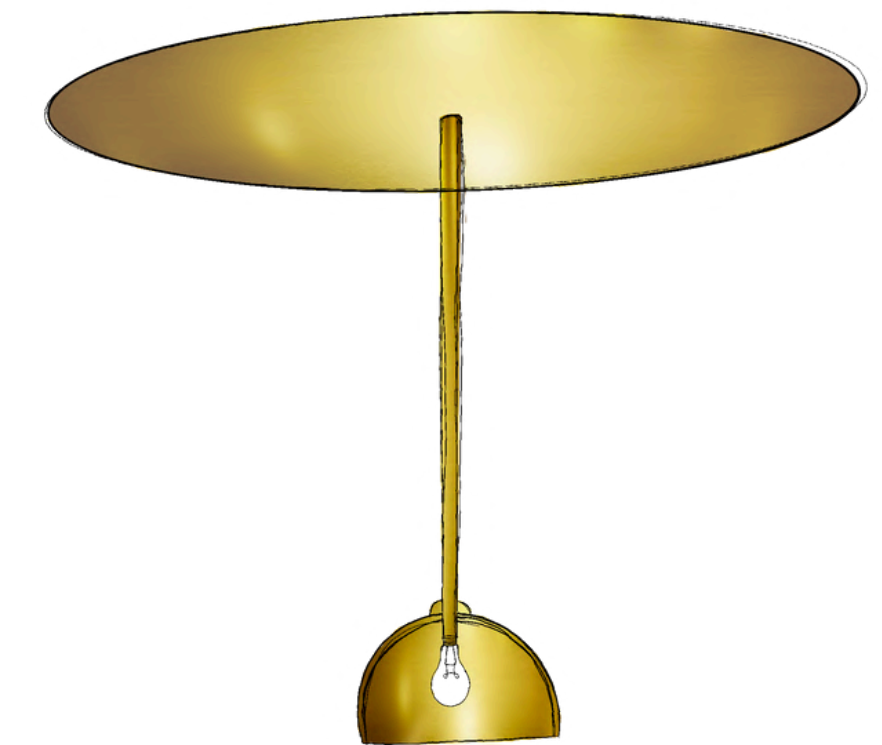
THE QUICKLIME IS MIXED WITH
WATER, SAND AND WHOLE OR
CRUSHED OYSTER SHELLS, CREATING
SLAKED LIME.



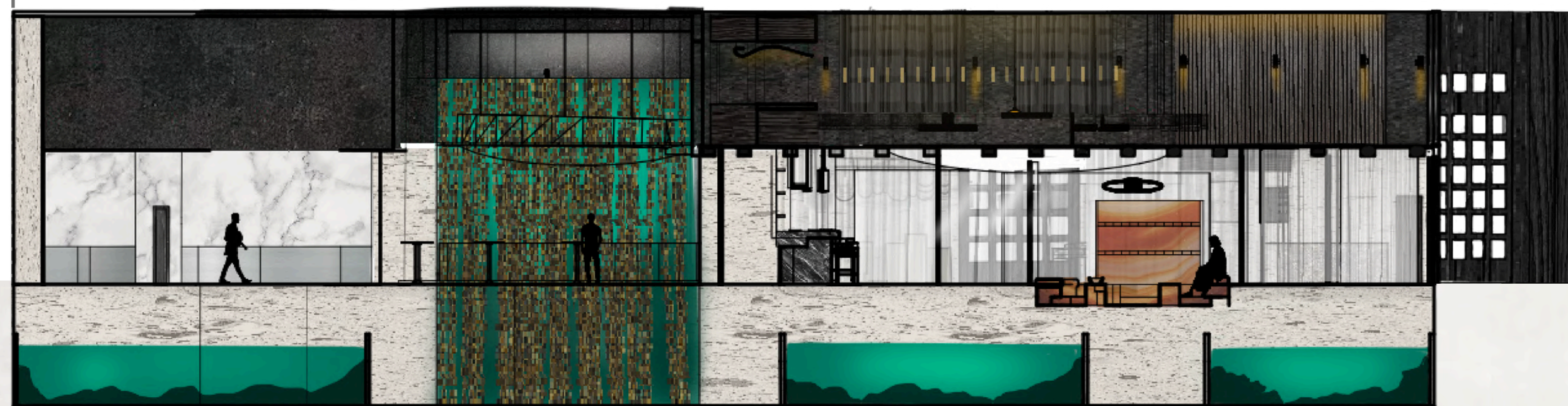
OYSTER SHELLS ARE HEATED TO A
VERY HIGH TEMPERATURE TO MAKE
QUICKLIME.



LET'S GO BACK TO NACRE



THE LIGHT FITTING IN THE UPSTAIRS DINING AREA AMPLIFIES THE BEAUTY OF THE OYSTER, AS WELL AS HIGHLIGHTING OUR RESPONSIBILITY TO PROTECT THEM. AT THE BASE, A POOL OF WATER REFLECTS ITS MOVEMENT ONTO THE CEILING ABOVE, IMMERSING THE DINER INTO THE WORLD OF THE OYSTER. SURROUNDING THIS ARE 78,000 BEADS MADE FROM RECYCLED BOTTLE CAPS, MIMICKING THE FORM OF A PEARL, A REMINDER THAT A HUMAN WILL CONSUME ROUGHLY 78,000 MICROPLASTIC PARTICLES EVERY YEAR, A NUMBER THAT IS SLOWLY INCREASING.



JUST TODAY
YOU HAVE
LIKELY
ALREADY
CONSUMED
214
MICROPLASTIC
PARTICLES



WORKSHOP SPACE

THE JEWELLERY WORKSHOP IS INSPIRED BY THE ROUGH, TACTILE OUTER LAYER OF AN OYSTER SHELL. I HAVE USED MATERIALS SUCH AS WOOD, HEMPCRETE, AND CALCIUM CARBONATE, THE COMPOUND THAT MAKES SHELLS. THESE RAW MATERIALS BRING AN ELEMENTAL AESTHETIC TO THE SPACE, DIFFERING HIGHLY FROM THE RESTAURANT.



WORKSHOP AND TEACHING AREA



RETAIL SPACE