

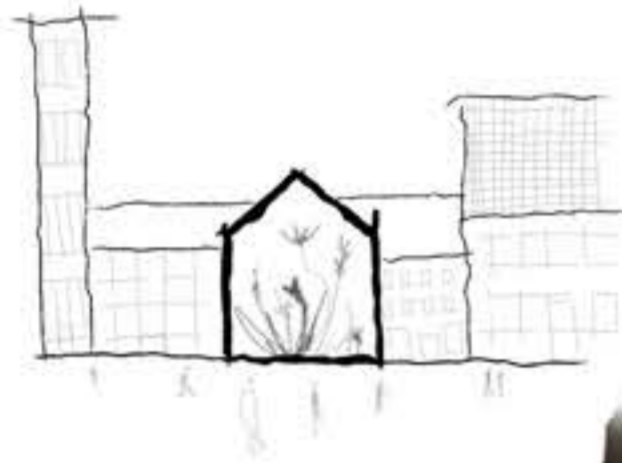
REMAINING STILL

My hostel aims to capture the out of body sensation of standing still in a busy crowd, or flowing river. This concept promotes self reflection, mindfulness and heightened attention span, helping both local people and visitors alike to notice the beautiful hidden moments of life.



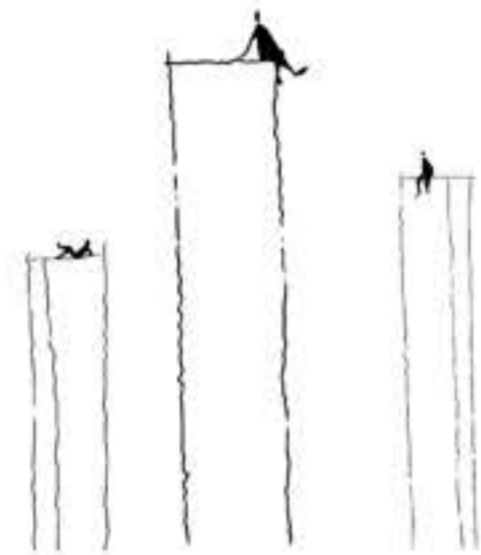
NATURAL TRANQUILITY

Extensive research dictates that spending time in nature is one of the most effective ways of de-stressing. To profit upon this, my hostel features a public tea garden space, filled with local flora ranging from wild plants and weeds, to herbs and berries suitable for tea making and consumption.



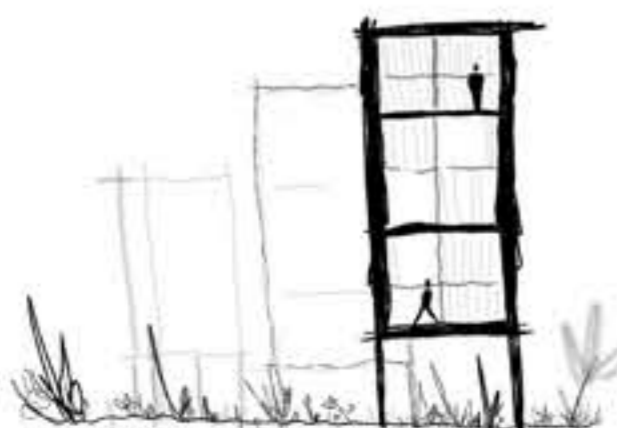
PUBLIC PRIVACY

Privacy is at the forefront of this hostel's priorities. The art form of genuine, face-to-face communication should be interpreted and practised with comfort at Hygge Hostel. Visitors are enabled to choose between observing and existing in public spaces, or directly connecting with others, depending on their preferences.



HEIGHT + VOLUME

Height is used as the primary method of separating private spaces from the public. This approach allows for the two to feel integrated, relying on movement and thresholds to create the distinction.



Hygge Hostel
+ TEA GARDEN
SLIGO



Set in the heart of Sligo city, the Savoy Cinema sits as a derelict husk of the cherished building it once was. Built in the 1980s, the cinema served as a central hub for the people of Sligo to gather and create irreplaceable memories together.

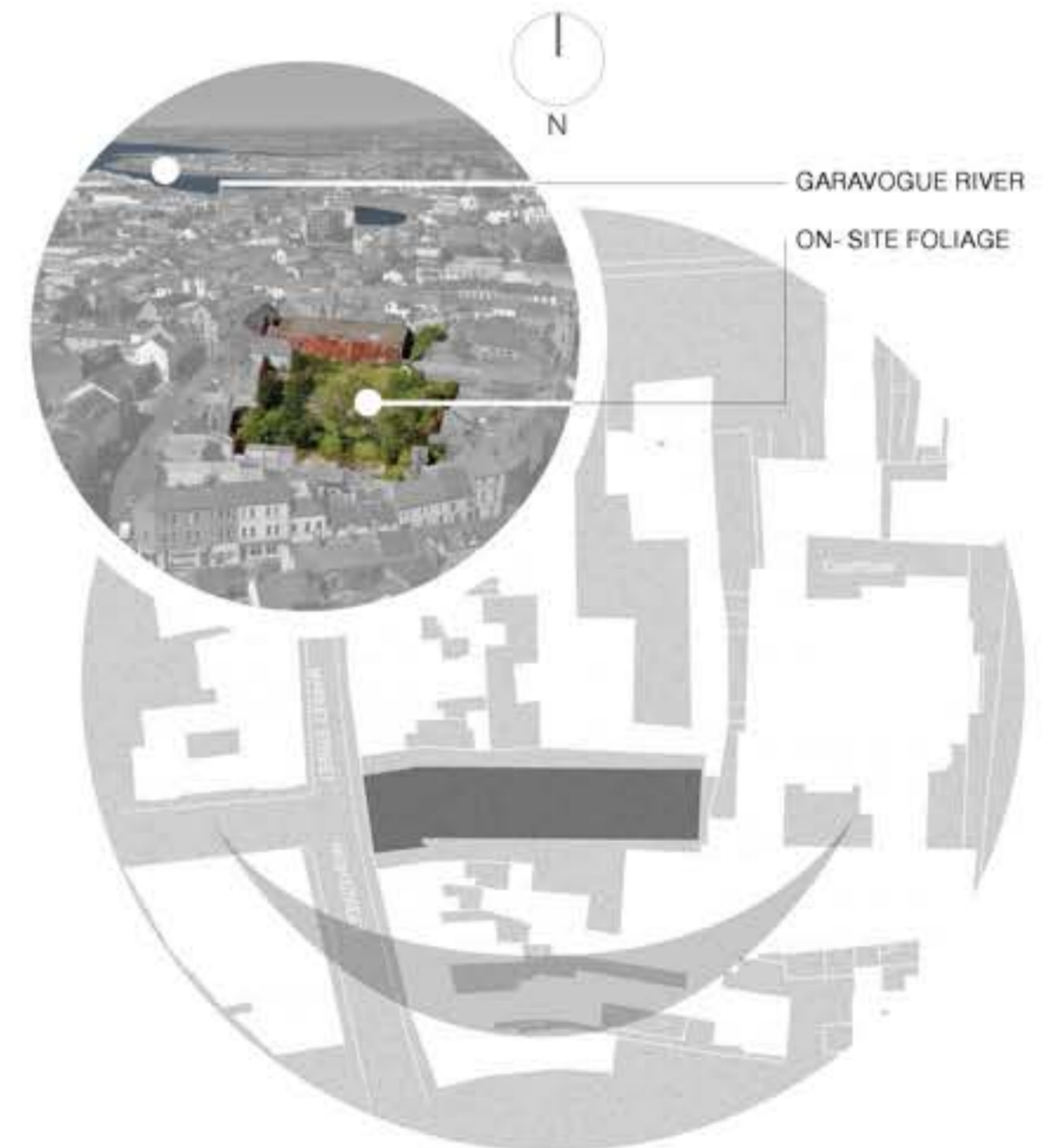
Today, the public rush past the Savoy's forgotten locked doors, caught up in the panic of everyday obligation. The Hygge Hostel concept aims to reintroduce the building as an introspective space, aimed at slowing down and retraining its visitor's attention spans to notice the beauty of mundane experiences and people in front of them. The idea of 'pause' created by constant movement forces visitors to relax in a world that doesn't, forging comfort in the chaos.

The idea of finding comfort in a frantic world stems from the sensation of calmness felt while standing still in the rapid current of the Garavogue River, which runs centrally through Sligo. The same experience can be observed standing amongst the bustling streets of Sligo, with the contrast of movement creating spaces within themselves. This conceptual language has translated itself architecturally to inform the important distinction between public and private spaces within the hostel. Coupled with prioritisation of simple biophillic design, the hostel aims to create a truly unique interior experience for noticing, repairing and feeling.

hygge
[hüe-gah] noun
The Danish idea of invoking a sense of coziness, contentment and well-being, enabling one to take pleasure in the smaller things in life.



GARAVOGUE RIVER SENSORY MODEL



ORGANISATION

LEGEND

- 1- Foyer
- 2- Reception
- 3- Office
- 4- Luggage store
- 5- M and E
- 6- Accesible W/C
- 7- Tea garden
- 8- Storytelling bench
- 9- Tea drying and rolling station
- 10- Pause space
- 11- Tea bar
- 12- Resident's dining
- 13- Resident's kitchen
- 14- Larder
- 15- W/C
- 16- Fire escape stairway
- 17- Single ensuite
- 18- Laundry
- 19- Staff kitchen and dining
- 20- 4 person bedroom
- 21- 8 person bedroom
- 22- Shower room
- 23- 6 person bedroom
- 24- Bike shed



All public spaces have been contained to the ground floor, including the tea garden, in which the building has been designed around. This busy garden acts as the central point of movement and public activity. Six timber frame towers have been placed directly into the garden, which contain most of the accomodation spaces for visitors on the first and second floors.

The juxtaposition of these private bedroom towers amongst the public tea garden is an example of my concept in action, with views out from the towers onto the garden below providing key thresholds which connect the public and private spaces, enhancing the experience of each through their interactions with each other. Transparent Corten steel grid flooring on the floors directly above the garden provide layers of transparency and connection.

New glass roof enabling natural light flow for wellbeing, connection to nature and illumination of the connection between transparent floors

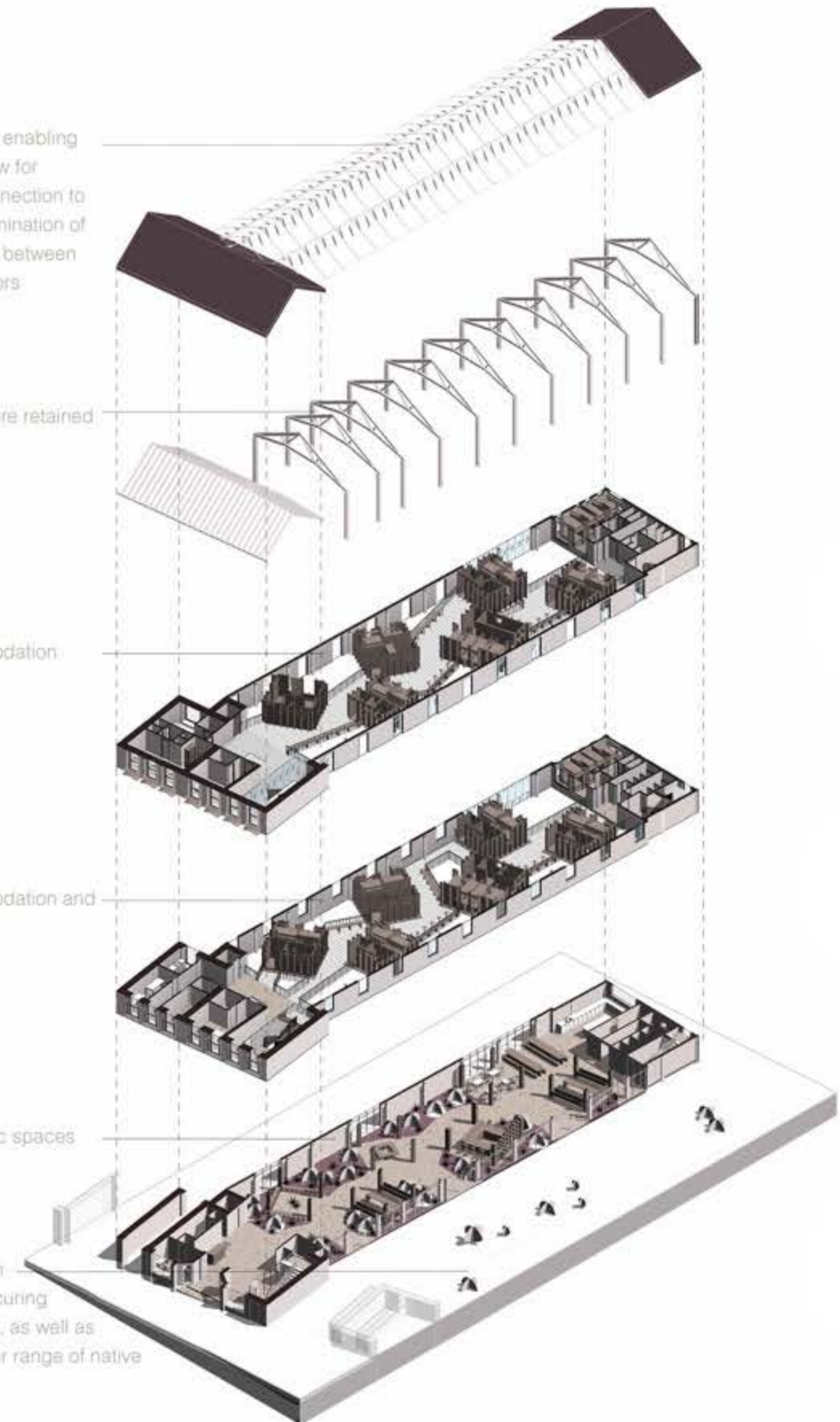
Existing structure retained and exposed

Private accomodation

Private accomodation and activities

Common public spaces

Outside garden made by manicuring existing foliage, as well as planting a wider range of native plants

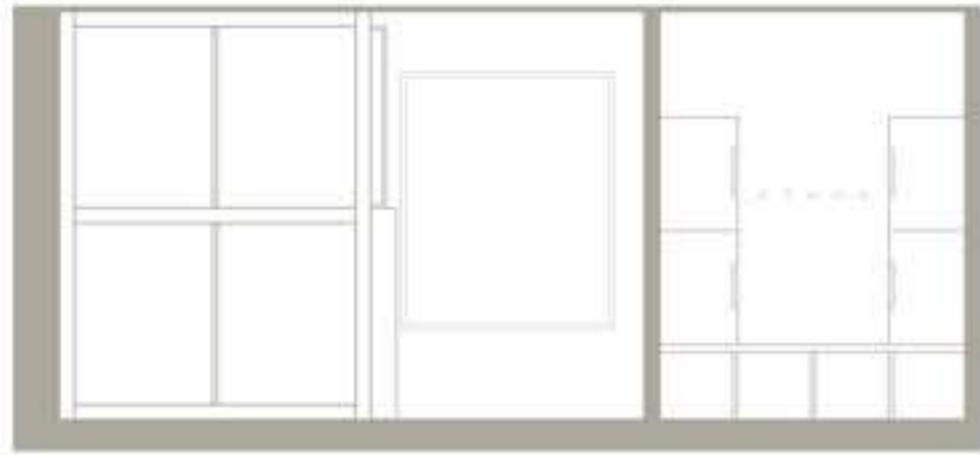


RECEPTION VIEW

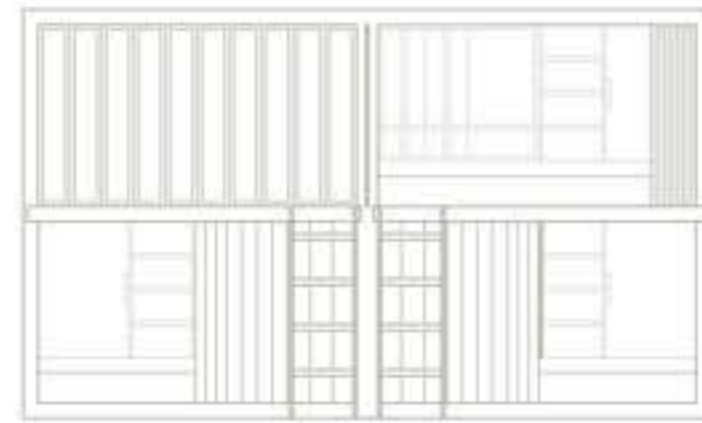


VISIBLE CONNECTIONS BETWEEN PUBLIC GROUND FLOOR AND PRIVATE UPPER FLOORS

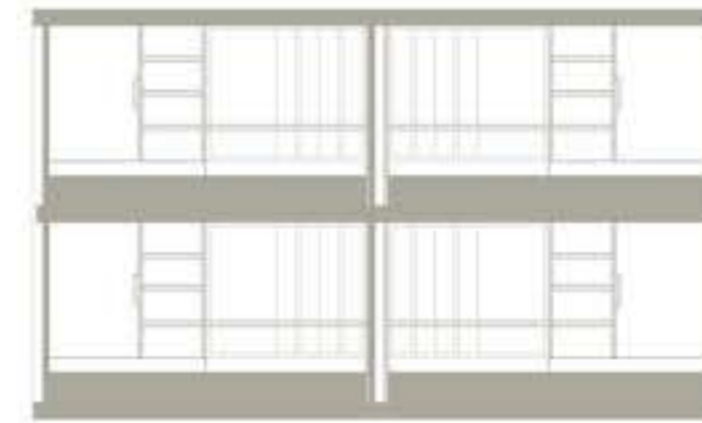
TOWER BEDROOMS



BEDROOM SECTION



CAPSULE ELEVATION



CAPSULE LONG SECTION



CAPSULE CROSS SECTION

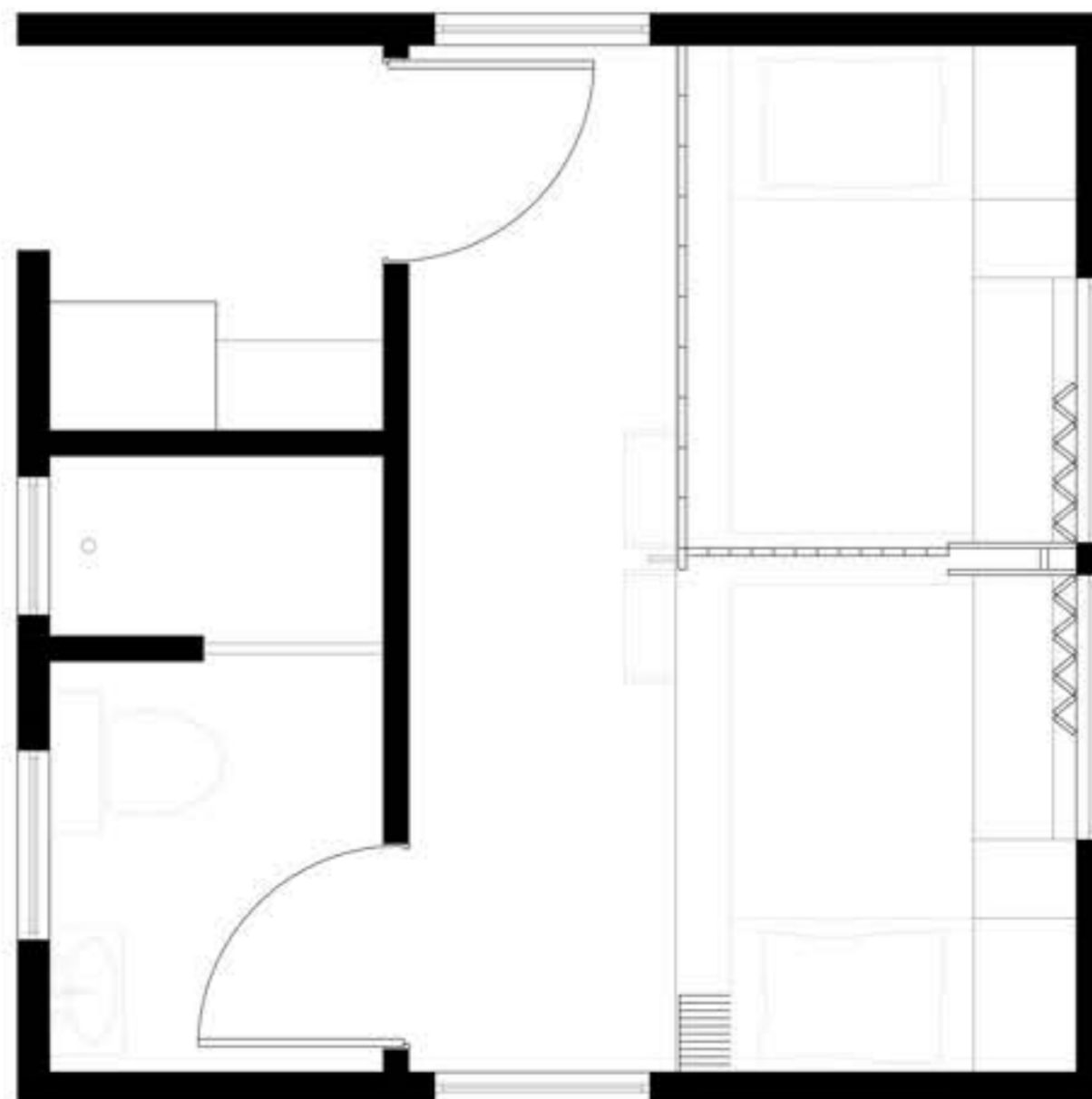
Each bedroom within the timber towers has been designed with adaptability and privacy in mind. Capsule-style accommodation allows visitors the option of complete solitude, if desired, with moveable shutters made of breathable Irish linen fitted to each bed space. Inside each capsule, there is ample shelving and wardrobe space, as well as a desk and operable windows looking out onto the garden below. Should guests need to, operable shutters between capsules can be opened to allow for interaction with neighbours. Inspired by the building's previous function, each capsule contains a projector set up opposite to the linen shutters. When the shutters are closed, visitors can project films onto the linen screens created by the closed shutters. Each room has its own ensuite bathroom facilities, and features breathable, sustainable materials suitable for healthy air quality such as tea bioplastic, tea based wall insulation, sustainable birch plywood, Forresso timber terrazzo floors and locally grown and produced Irish linen.



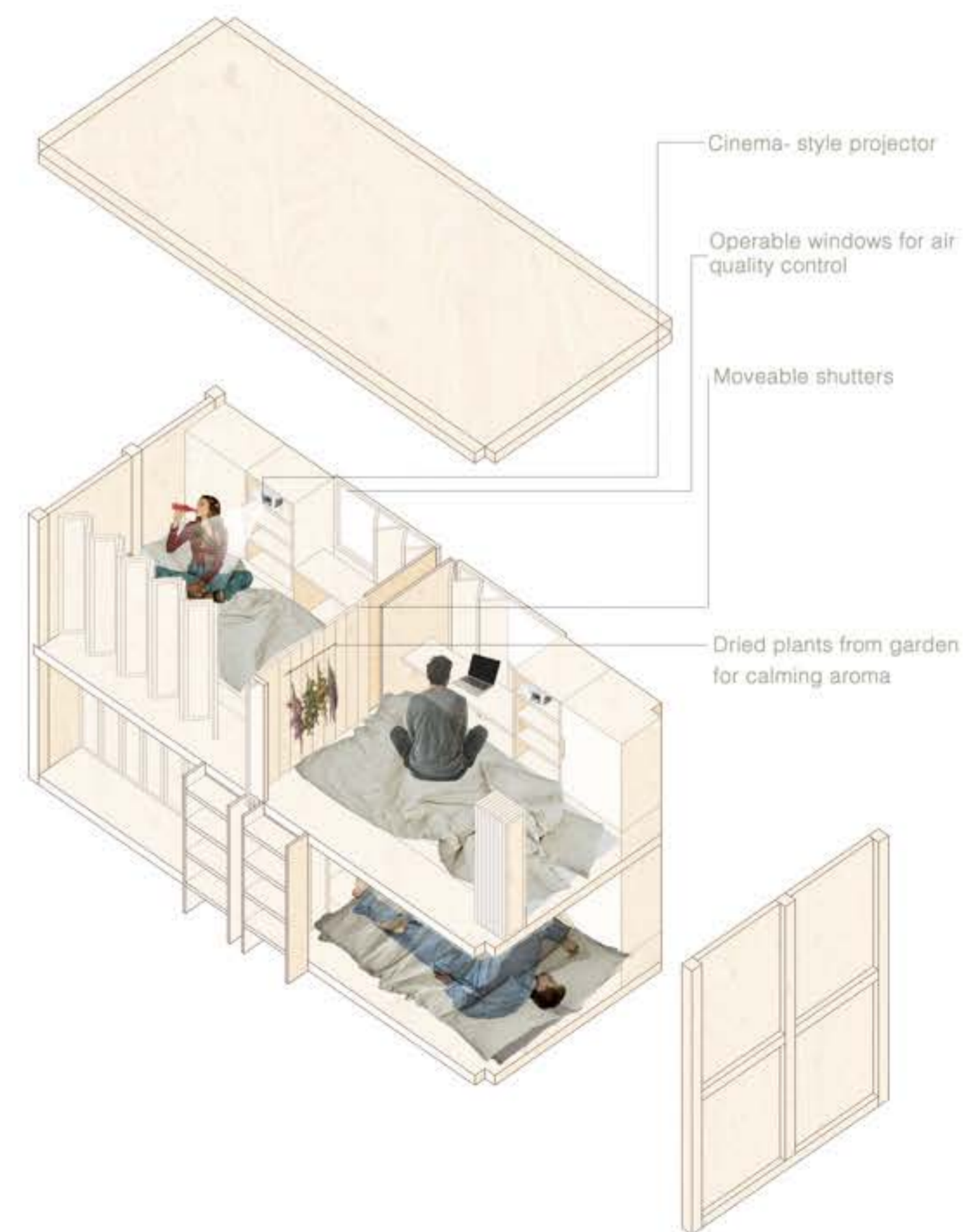
4 PERSON BEDROOM MORNING VIEW



1:20 CAPSULE PHYSICAL MODEL



4 PERSON BEDROOM AND ENSUITE PLAN 1:20



CAPSULES AXONOMETRIC SHOWING USE

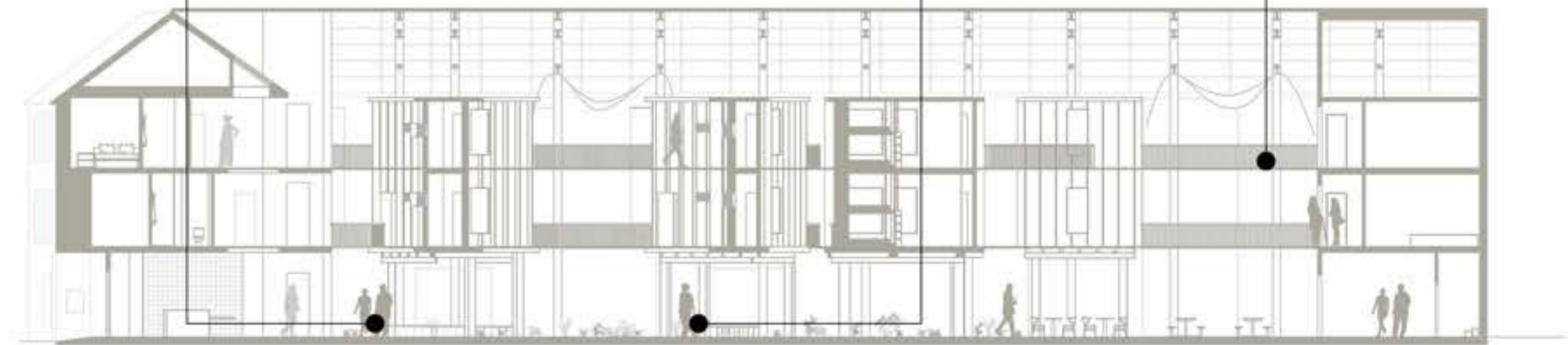
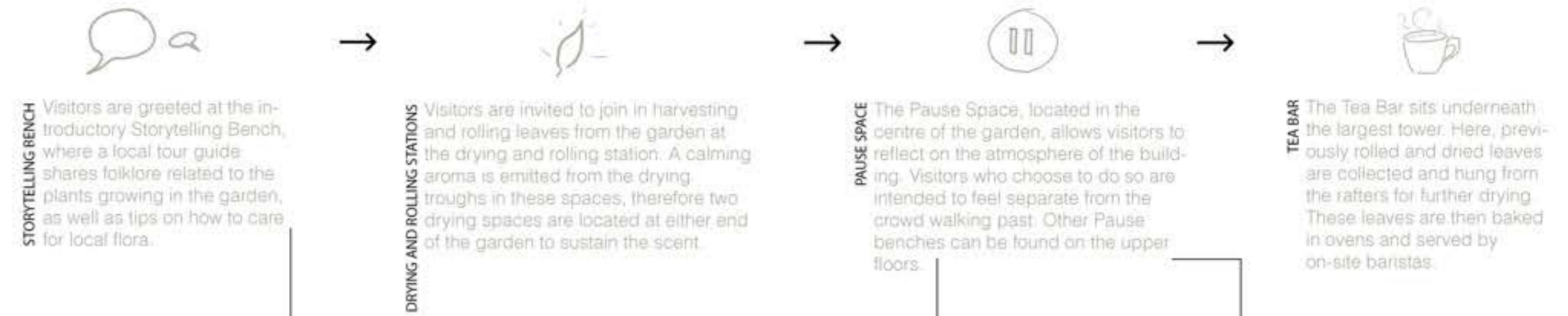
TEA GARDEN



Following the introduction of countless cafe chains throughout Sligo within the last twenty years, people have become accustomed to the convenience of instant hot beverages, made from imported ingredients. Considering that the average Irish person consumes about 4-6 cups of tea daily, I believe that there is potential to make a sustainable and experiential difference to everyday tea pauses that visitors can learn from and take with them.

With the introduction of the tea garden to Hygge Hostel, I aim to reintroduce the value of local flora to the local community as well as visitors, while establishing a connection to nature and creating a tranquil atmosphere for winding down. Most Irish people are unaware of the abundance of native plants which are both safely consumable, and are beneficial to health, not to mention the range of delicious flavours available right outside their doorstep.

The garden practises sustainable circular practises, involving the reuse of tea waste in the garden soil, insulation, and in furniture and building materials.



SECTION CC

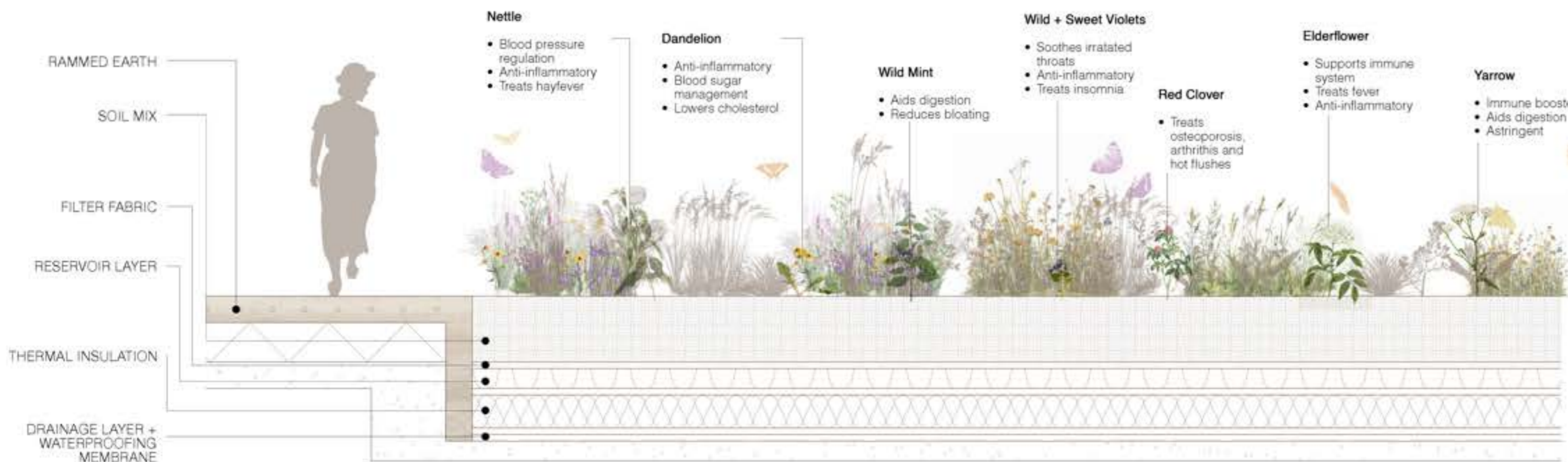


1:50 PHYSICAL MODEL ON TEA WASTE-INFUSED RAMMED EARTH BASE

DETAILED TEA GARDEN SECTION



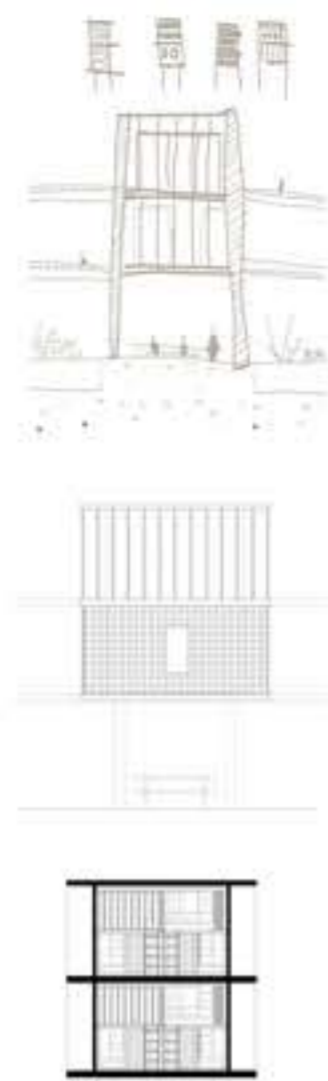
TEA GARDEN- TEA BAR VIEW



TOWERS AND MATERIALS



CONCEPT MODEL



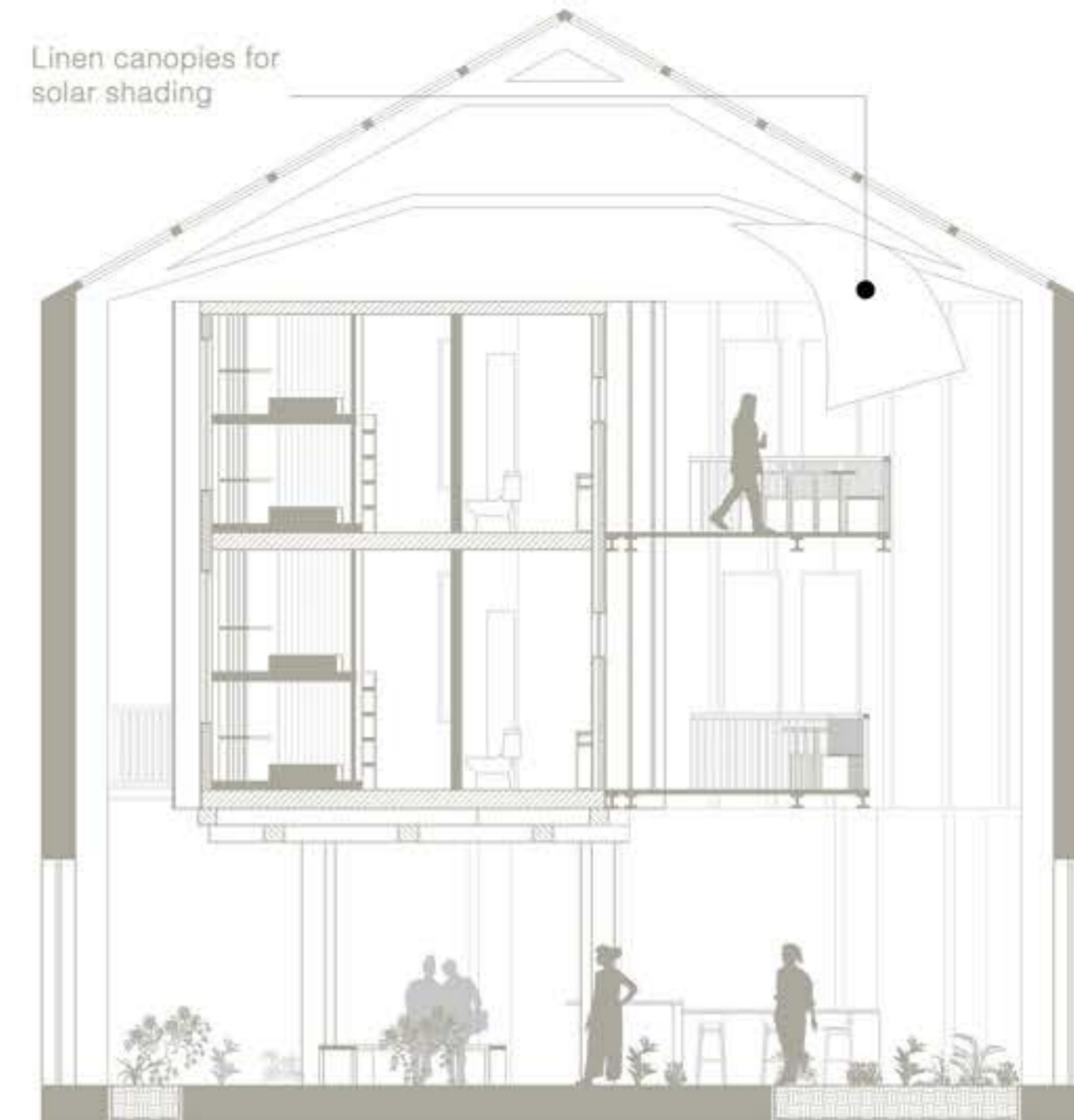
CONCEPT DRAWINGS



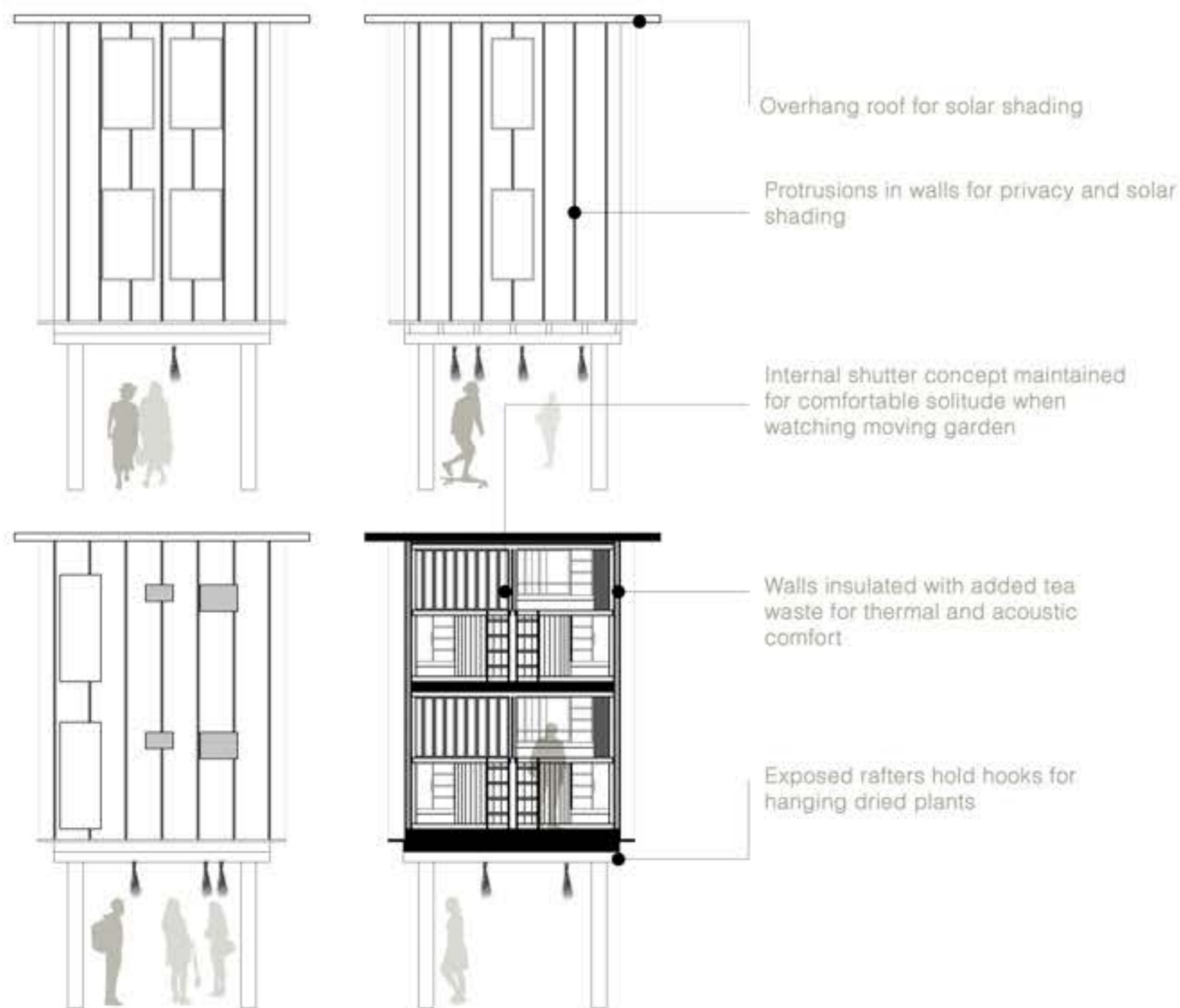
Initial concept models and drawings for the towers focused on detailed shutter and divider designs and openings, enabling privacy yet still providing views out of the towers. These initial ideas acted as the basis of the internal shutter design associated with the capsules in the final design proposal.



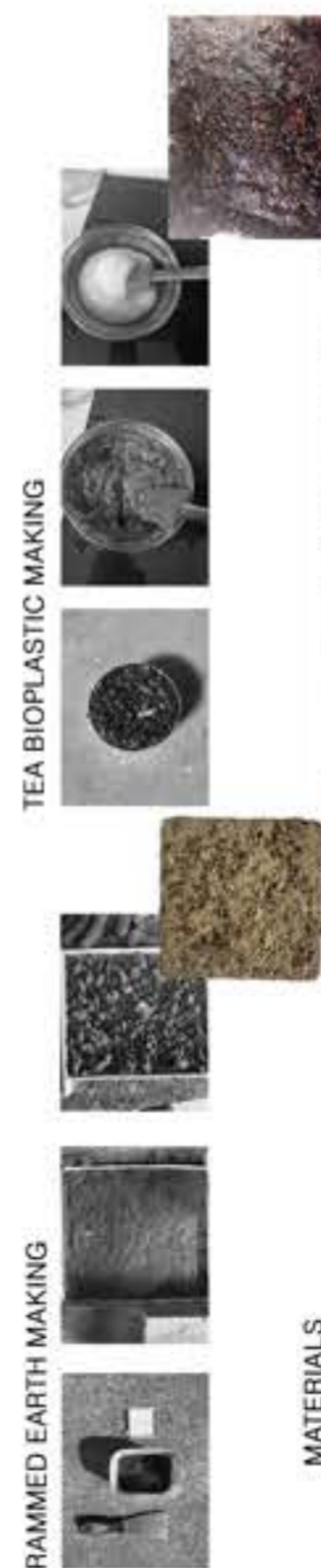
1:100 PHYSICAL MODEL



SECTION AA 1:50



1:100 4 PERSON BEDROOM TOWER ELEVATIONS AND SECTION



TEA BIOPLASTIC MAKING

RAMMED EARTH MAKING



- MATERIALS**
1. IRISH LINEN- Locally sourced and made from Irish flax
 2. BIRCH PLYWOOD- Sustainably sourced
 3. FORRESSO TERRAZZO- Made with non-toxic bioresin and timber waste offcuts
 4. TEA INFUSED RAMMED EARTH- Rammed earth made with soil from site and reused concrete from original floors dug up for garden space. Added tea waste from local businesses. Finished with bioresin.
 5. TEA WASTE BIOPLASTIC- Tea waste from local businesses combined into a bioplastic, comprised of glycerine, vinegar, starch and water. Used for benches and worktops
 6. CORTEN STEEL- Reused weathered Corten steel, to acknowledge the existing rusted iron exterior