



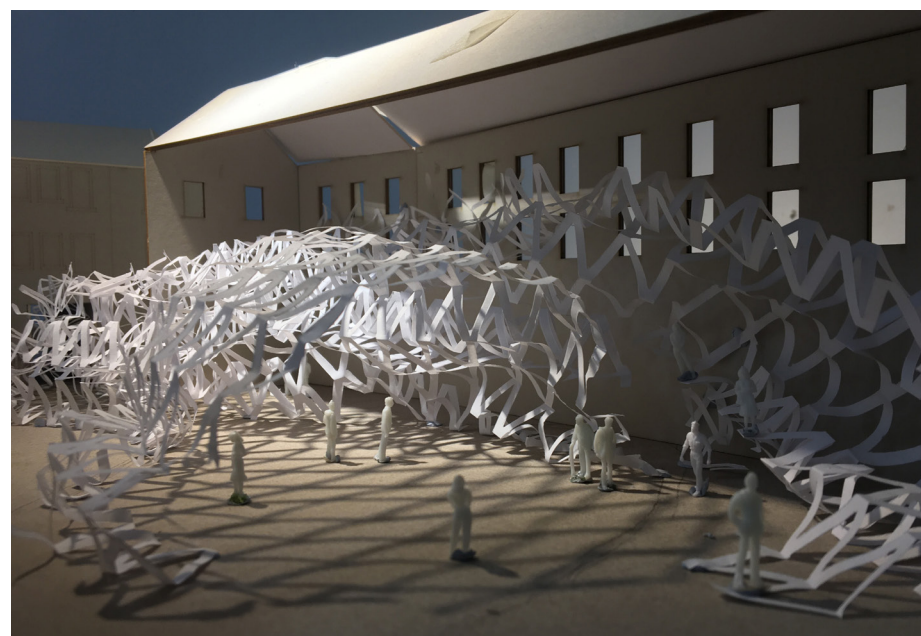
The Third Place

The Third Place explores the fusion between retail and public space design. With the goal of creating a beneficial space to the community, whilst also introducing an alternative vision of the traditional High Street.

The urgency to question the future of High Street retail within Town environments stems from the major decline of high street shopping, which has forced shop closures and driven away users.

Although the shift to online shopping has made the act of consuming instantaneous and effortless, it has also developed into a disposable and disconnected notion.

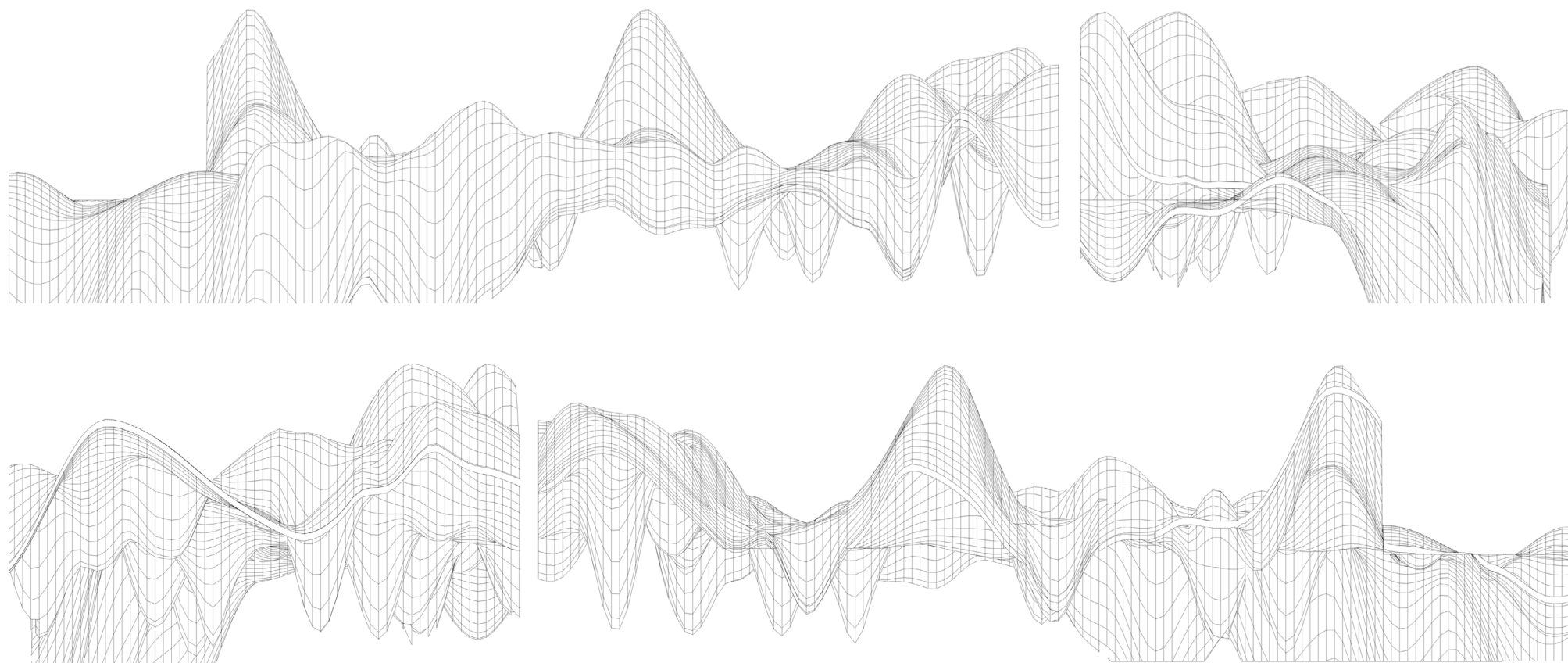
In the attempt to reconnect community environments, The Third Place also highlights issues on 'fast fashion, short lived purchases through workshops and retailing re-purposed goods. The workshops whilst having a social benefit, will also provide apprenticeships in woodworking, textiles and other employable skills.



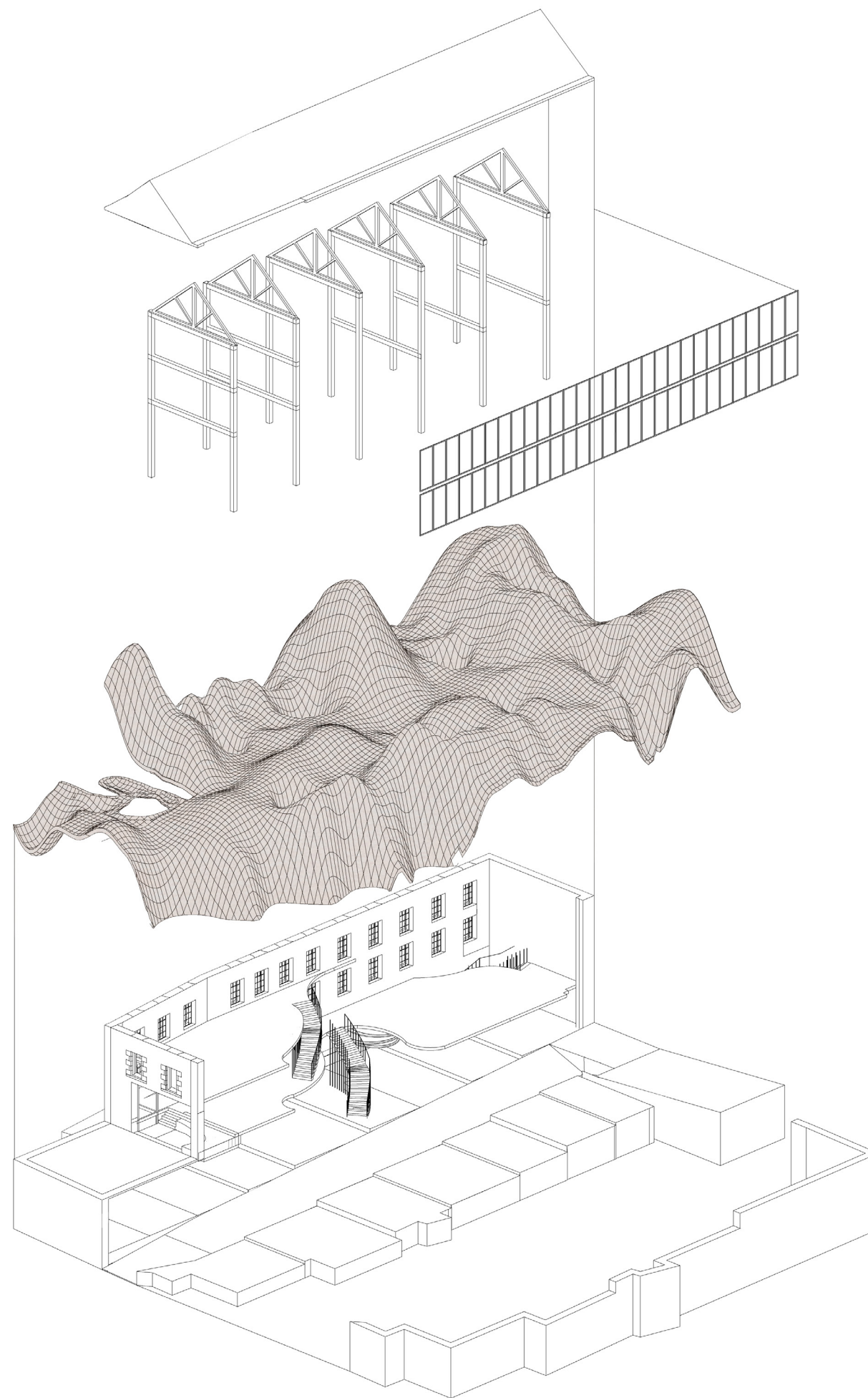
Sketch Model Development



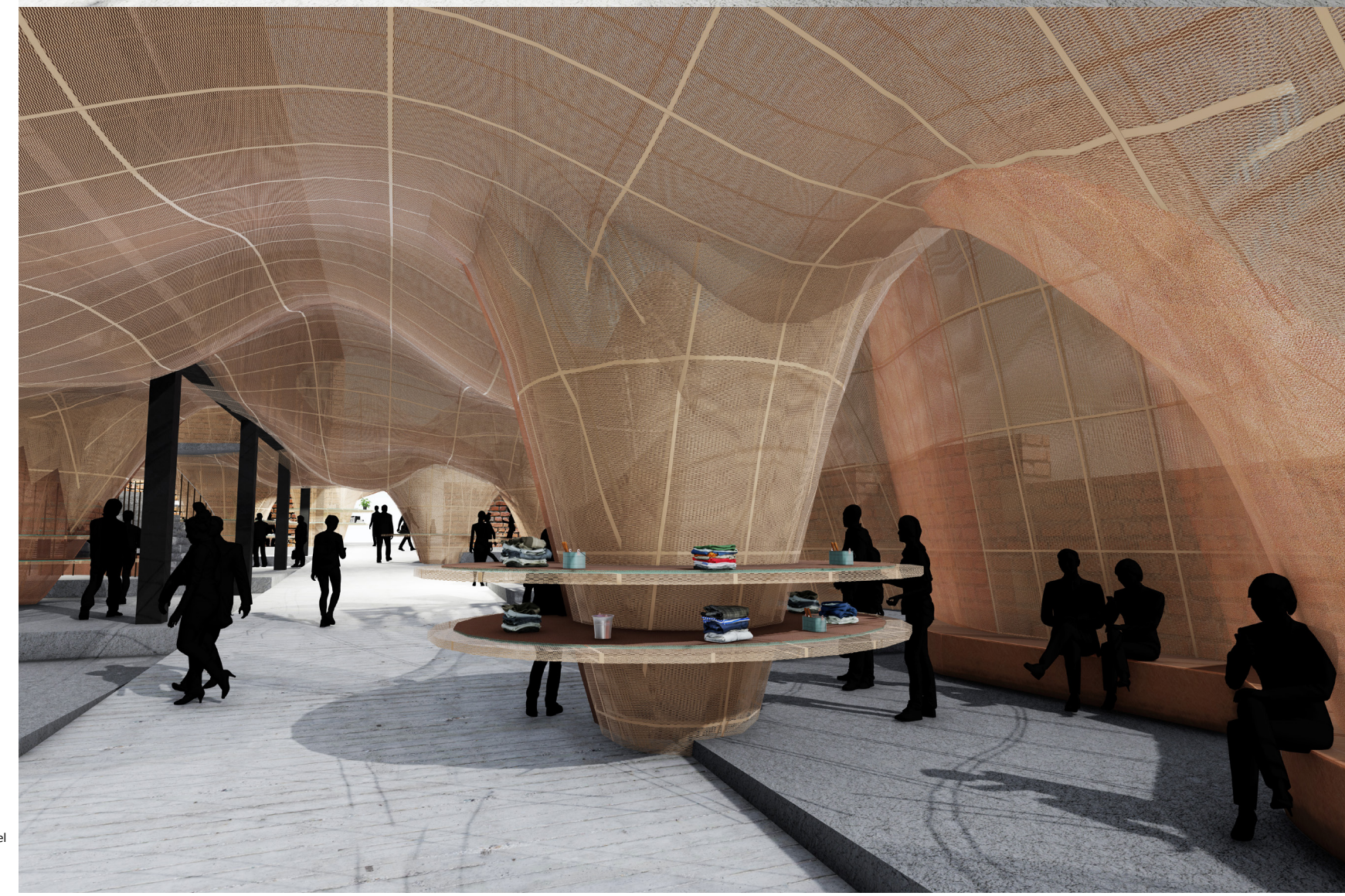
Sketch Model Development



Parametric Structural Views



Development Diagram



Visualisation Development Retail Level

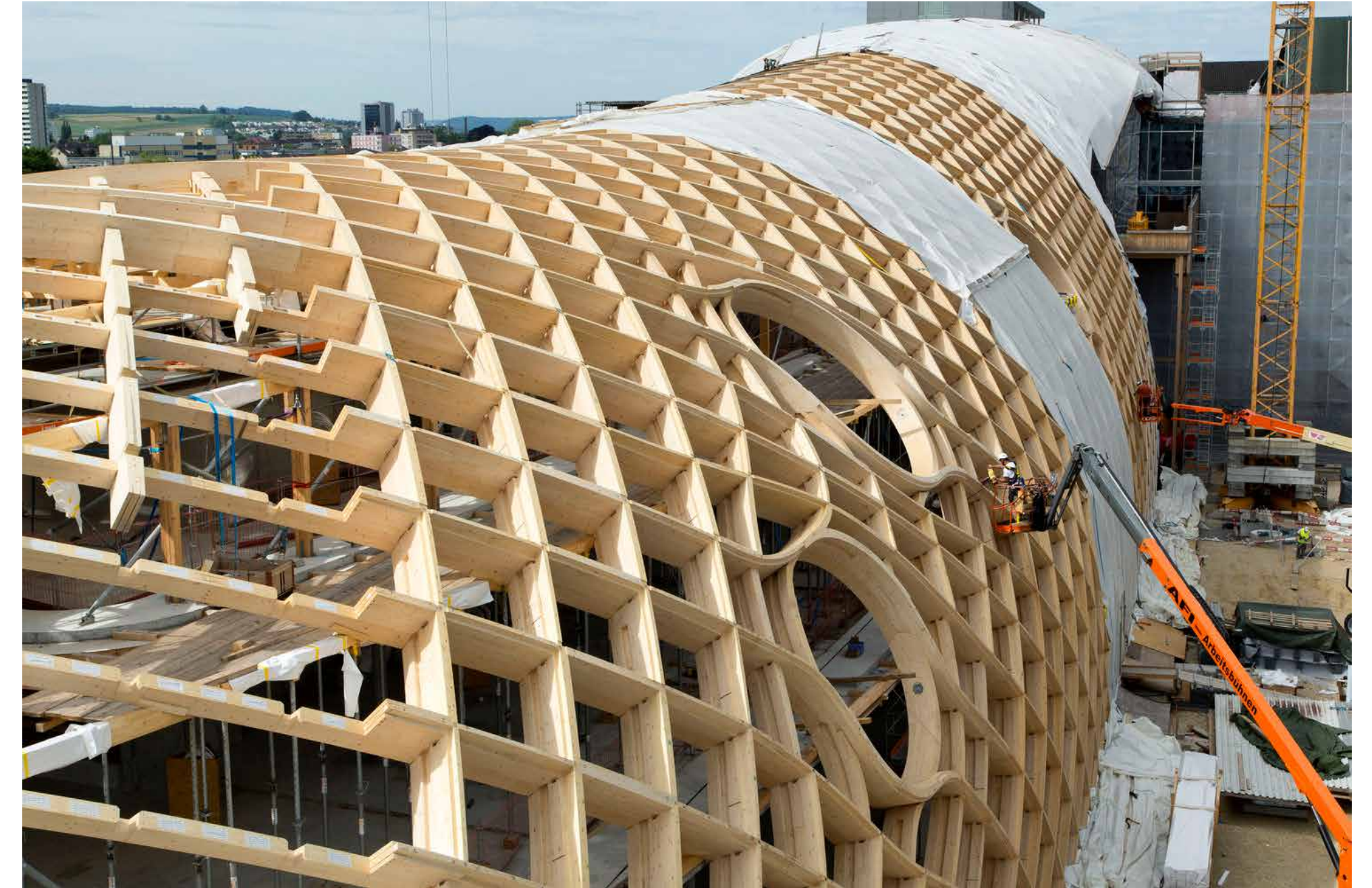


Structural Similarities and Inspiration

The structural breakdown of the stratified cross connections allow for the more desired, seamless appearance compared to other case studies with further visible structural support.

On going- non completed- exploded axonometric of an area of the structure within my design.

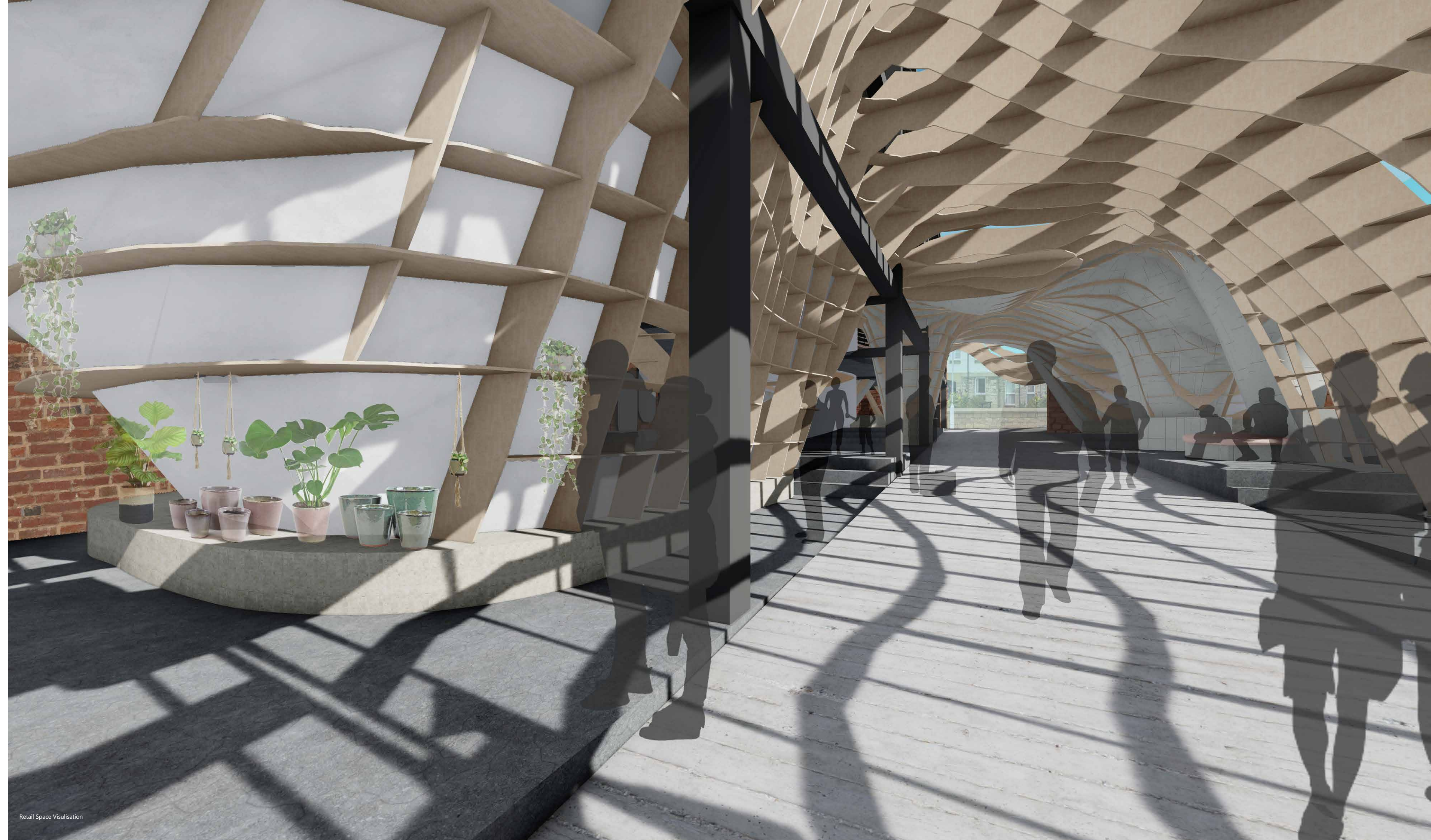
Further 1:5 Detail design on the connection of the sectioned panels.



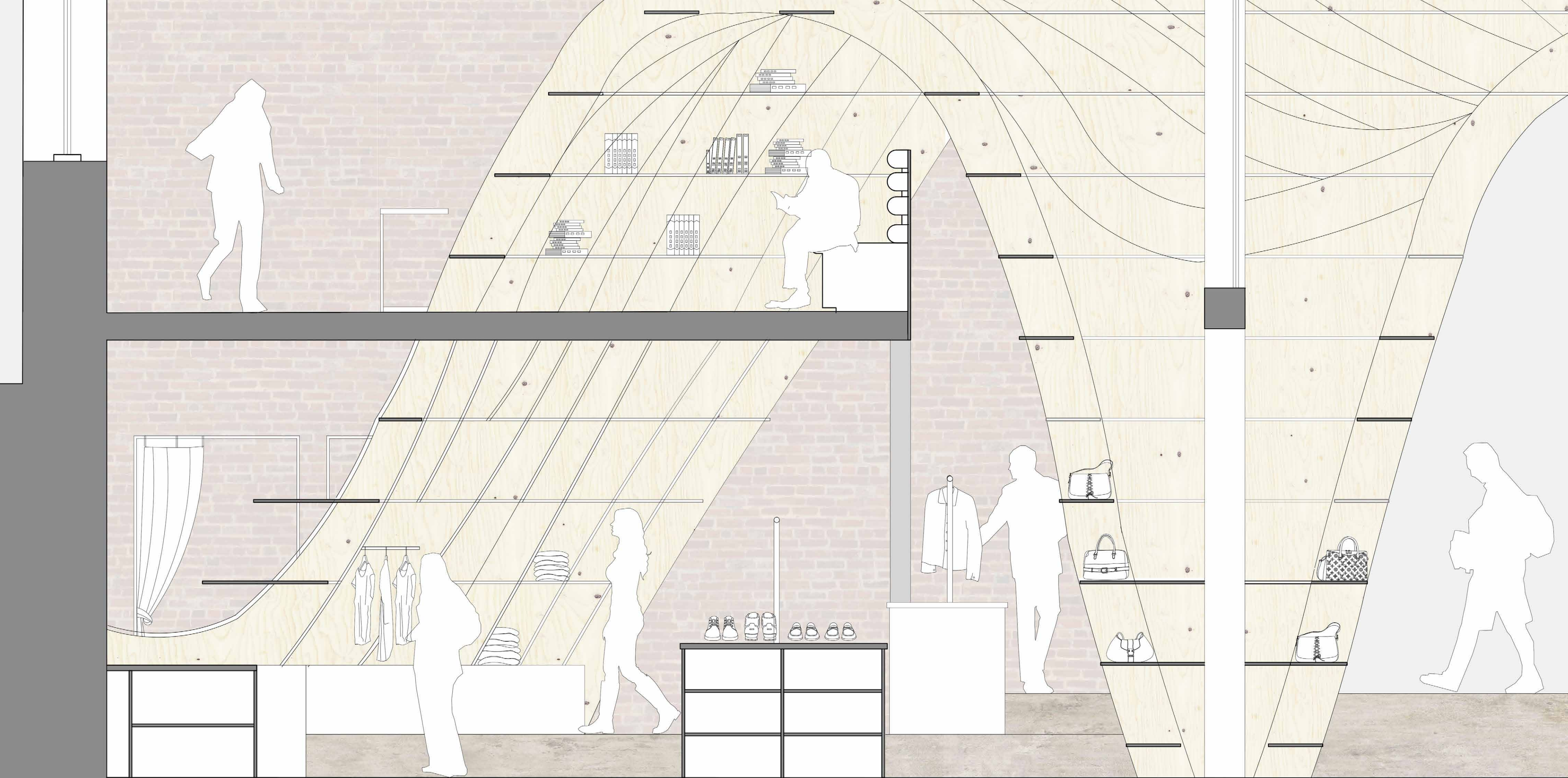
Swatch and Omega Campus Biel, Switzerland
Shigeru Ban Architects



Physical Model of Major Space

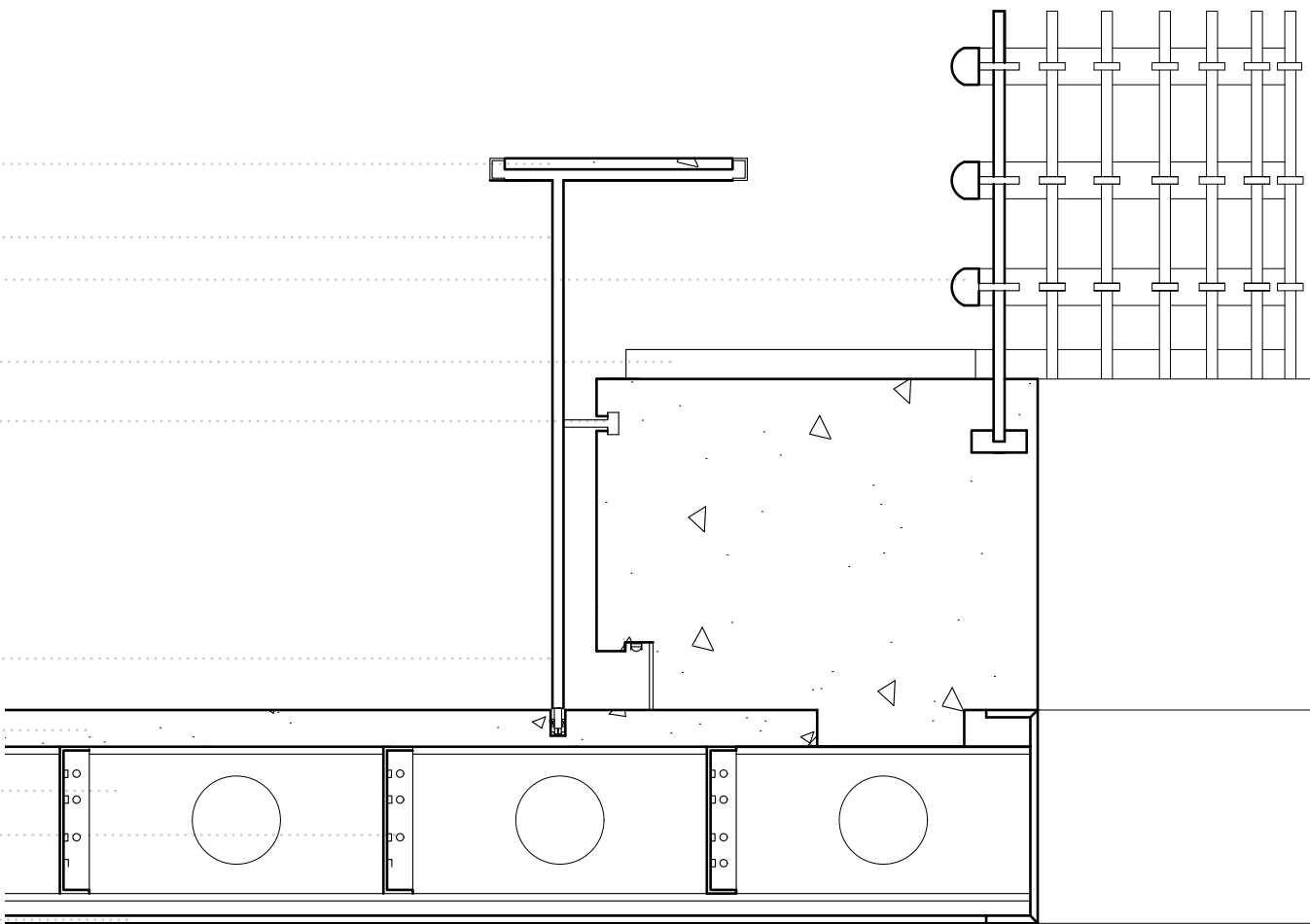


Retail Space Visualisation

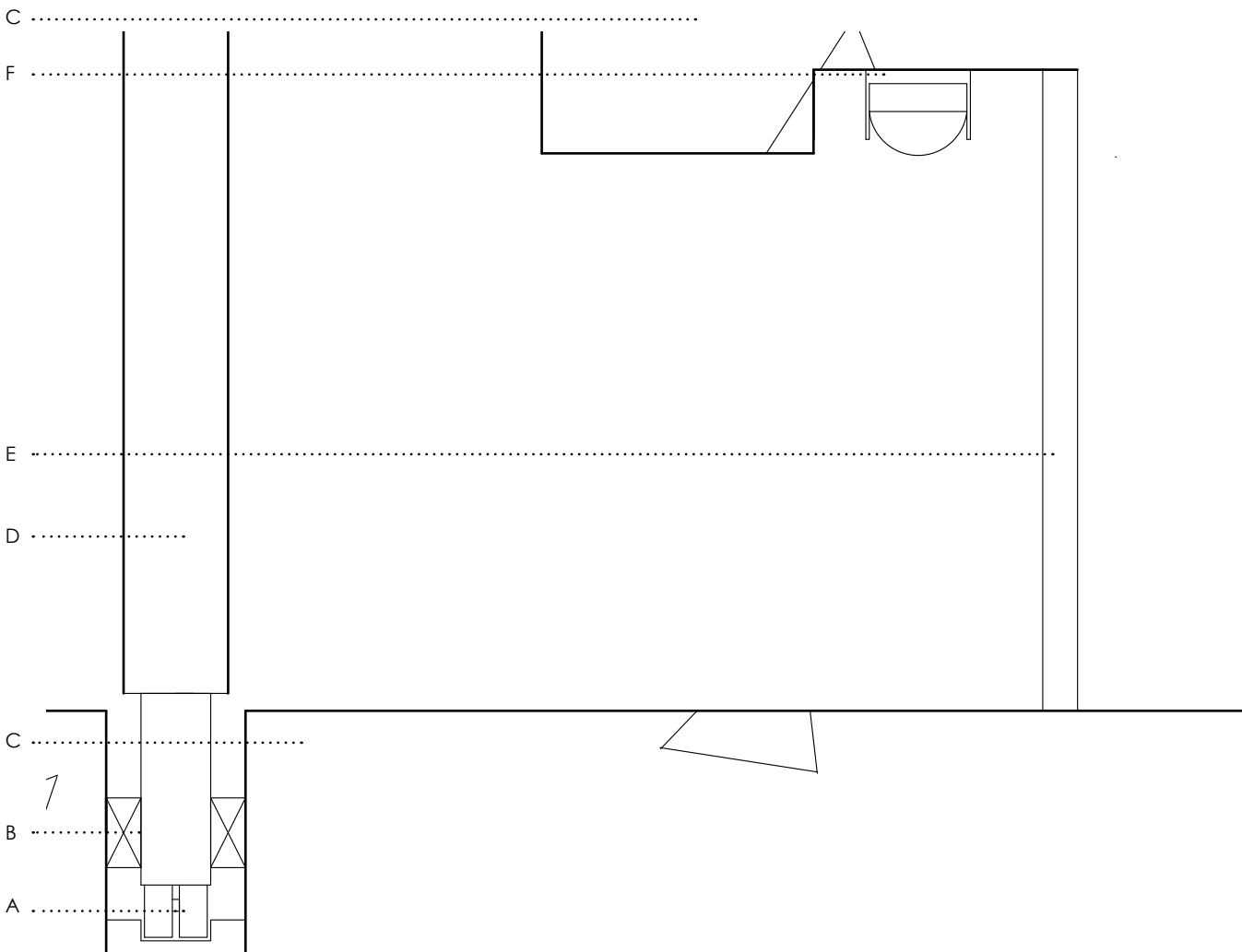


1: 20 Section Fashion Retail Area

- Polished Concrete
- Black Powdered Coated Steel Tubing
- Fixed Foam Upholstered Cushioning
- Loose Foam Upholstered Cushioning
- Runner Fixture

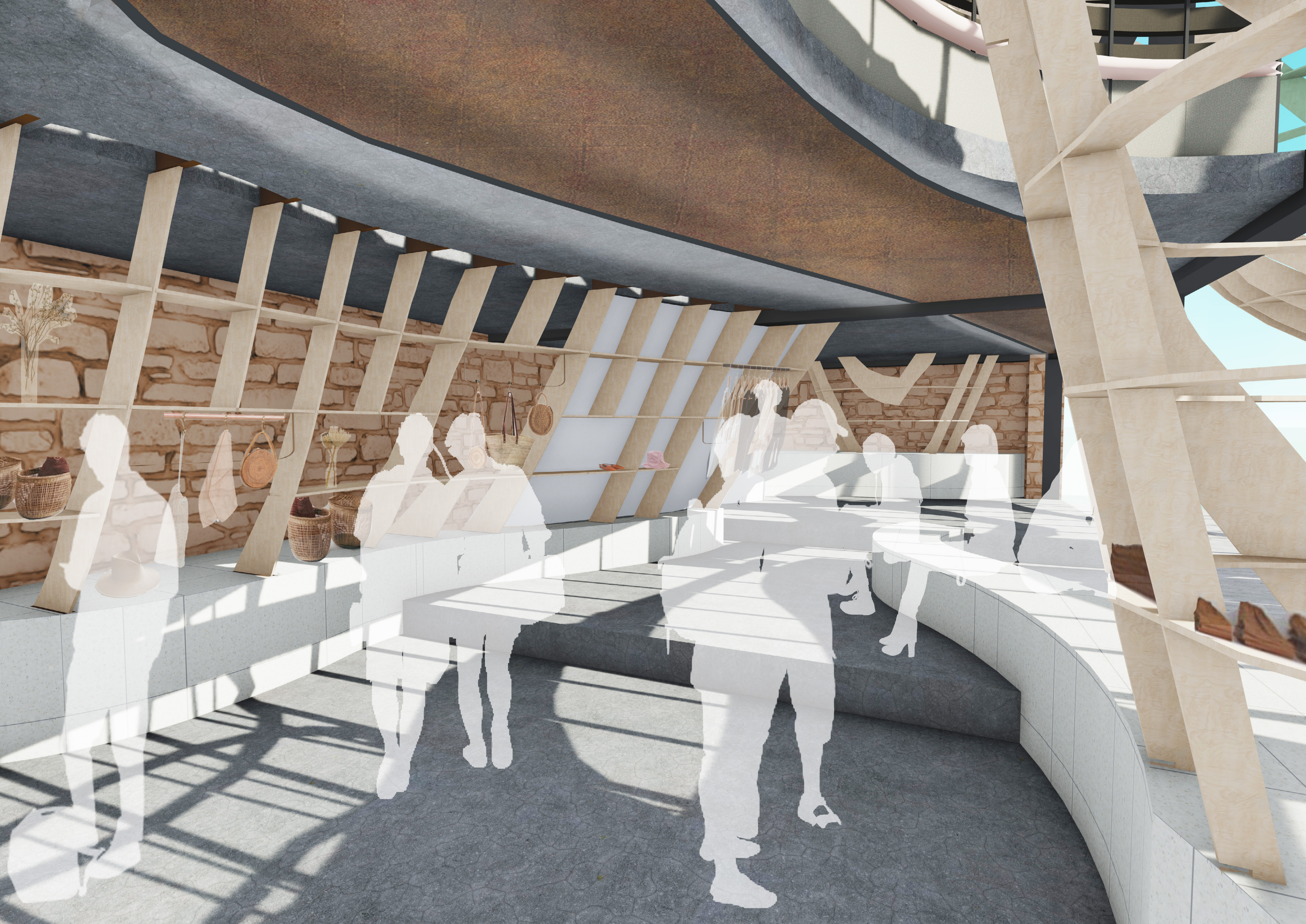


1:10 Seating Detail

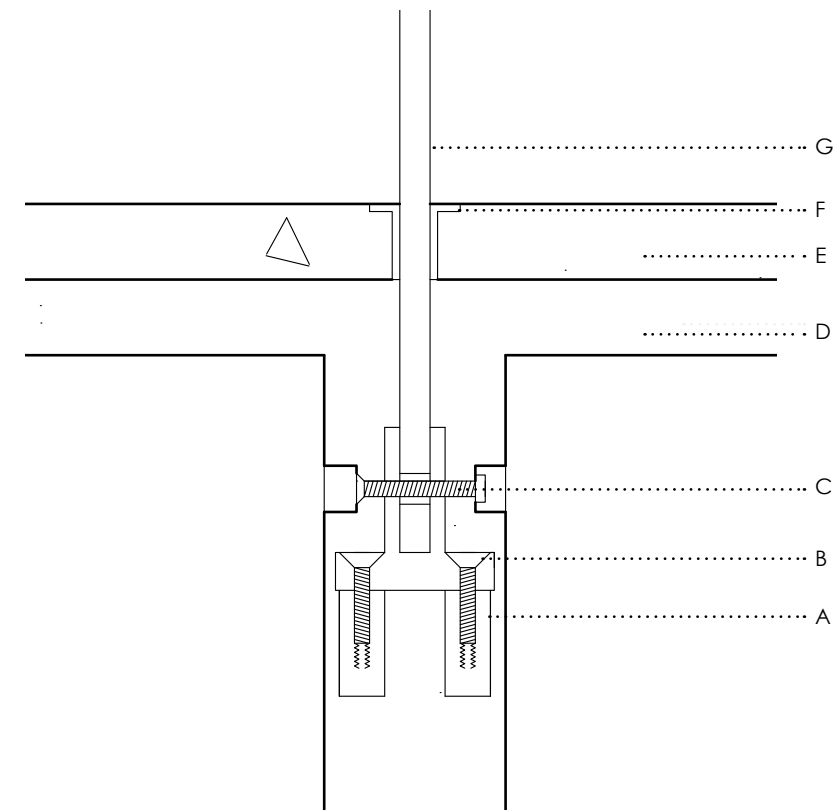


1:1 Seating Detail

- A. Track Fitting
- B. Cross Support
- C. Cast Concrete
- D. Black Powdered Coated Steel Tubing
- E. Brushed Copper Panel
- F. Downwards LED Trim

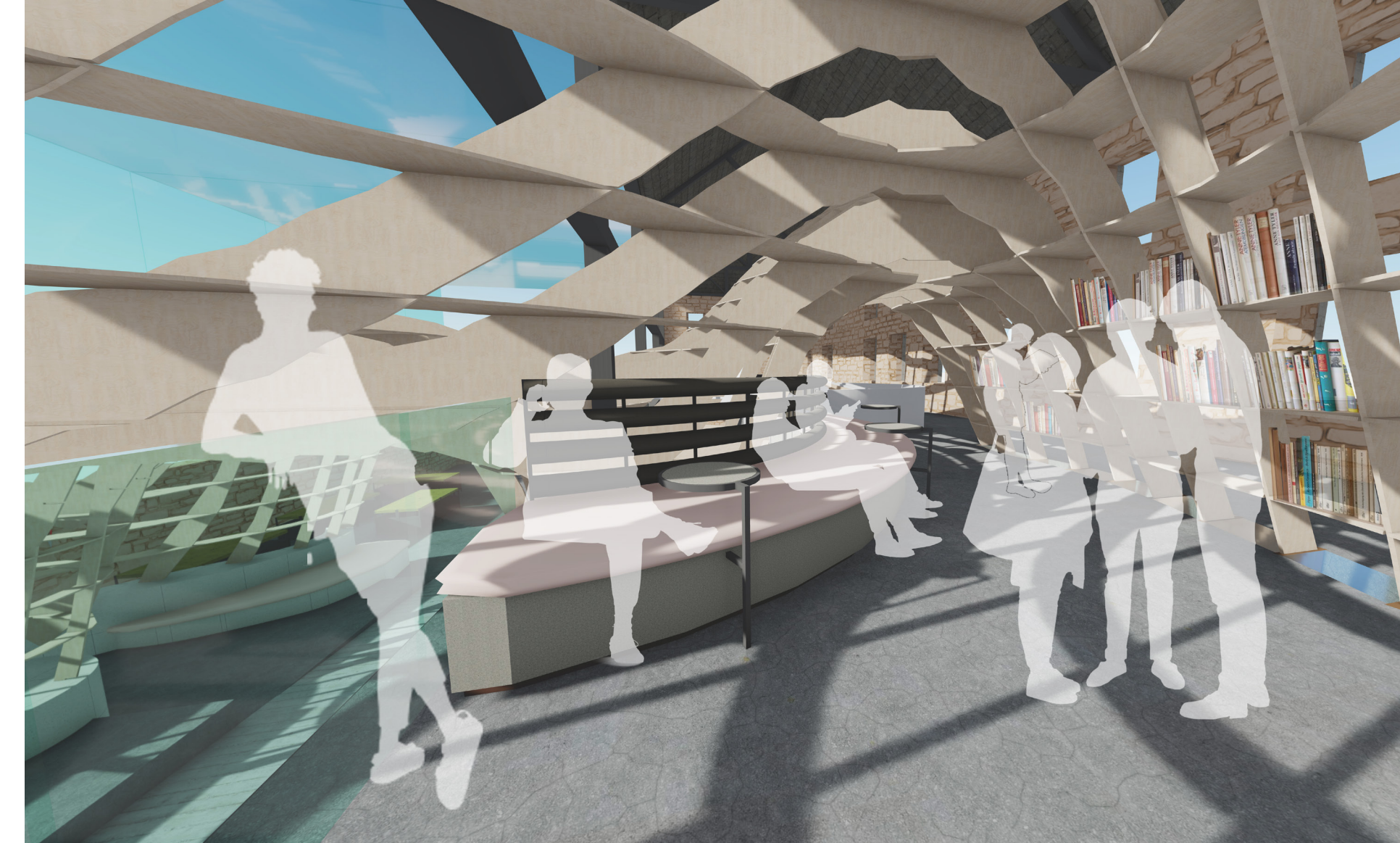
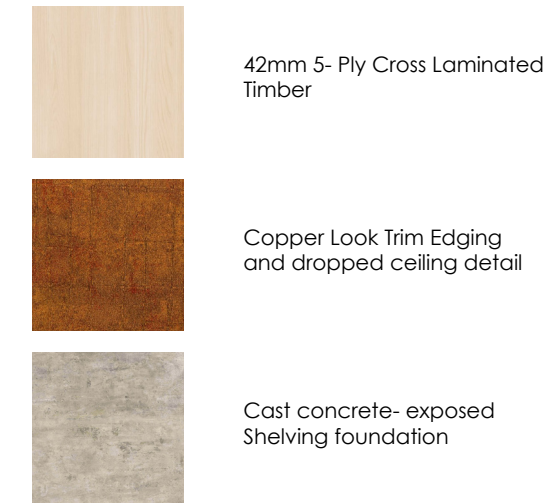


Retail Visualisation

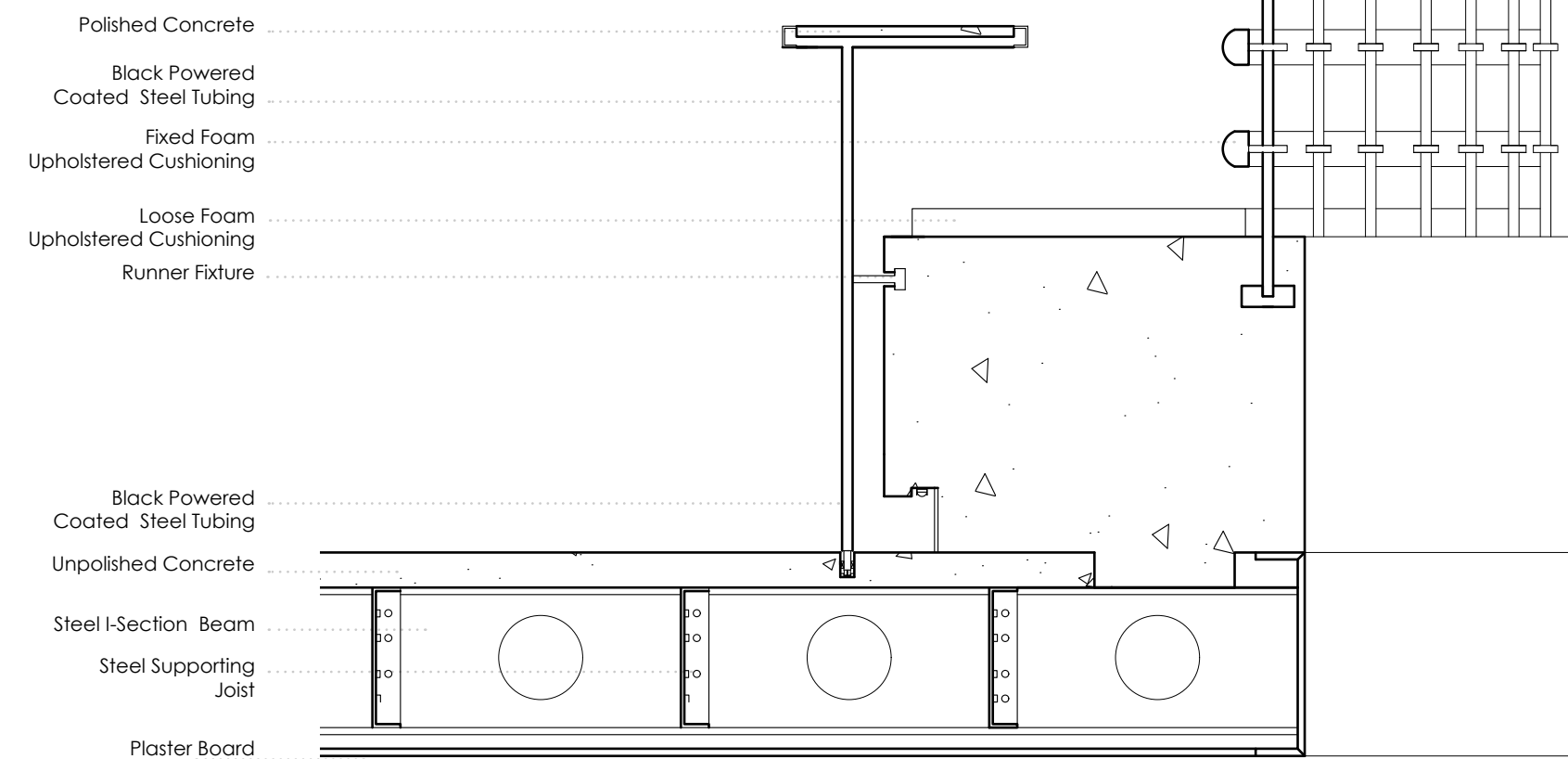


1:5 Shelving to Concrete Detail

- A. M10 x 100 Resin Anchor
- B. M10 x 80 CS Machine Screw
- C. M8 x 60 CS Machine Bolt
- D. Cast Concrete
- E. Pre Cast Concrete Slab
- F. Ruby Brushed Copper Trim
- G. 20mm Cross Laminated Timber



Library Visualisation



1:10 Seating Detail