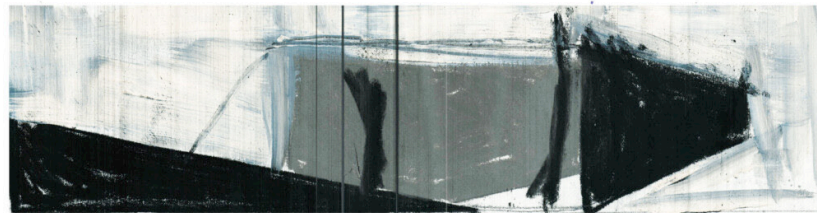


# EXHORT: THE ESSENCE OF OBSOLENCE

BY ELIZABETH RICHARDSON  
UNIVERSITY OF BRIGHTON - YEAR 3

The possibilities of putting pen to paper are endless, along with the opportunities created through conceptual thinking. My passion lies within using drawing as a method to visually explore and capture those moments. In a world that is moving into the digital realm at an incredible speed I believe it is important to conserve the physical 'nature of making' and incorporate these tactile and expressive elements within as much of my work as is practical. I believe the following images display these qualities and express my personal processes when it comes to creating.

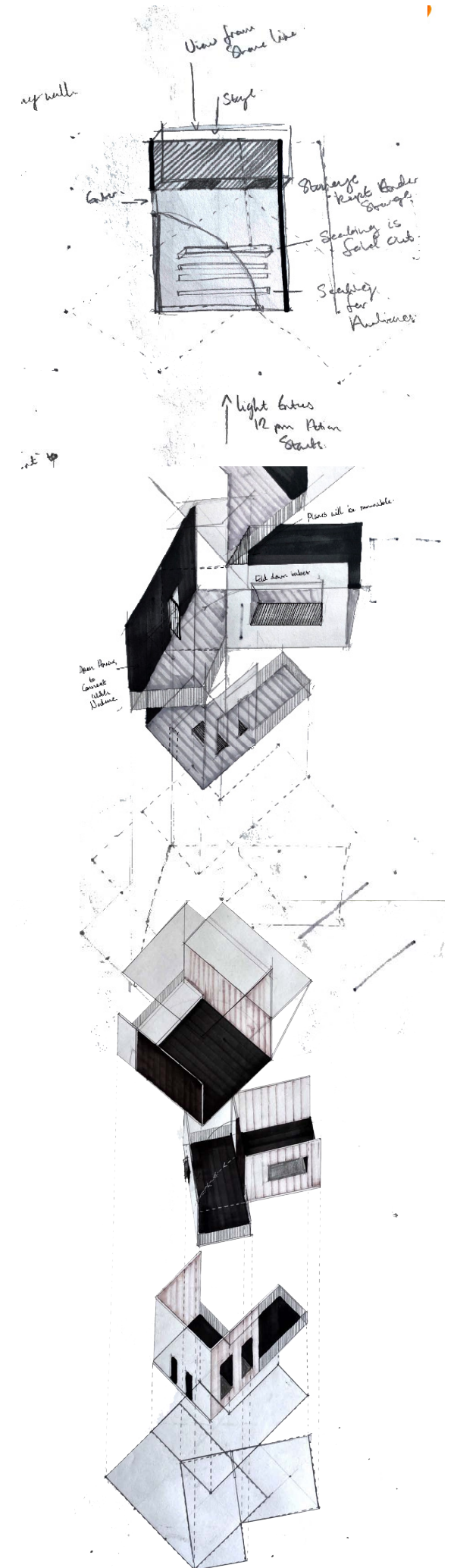
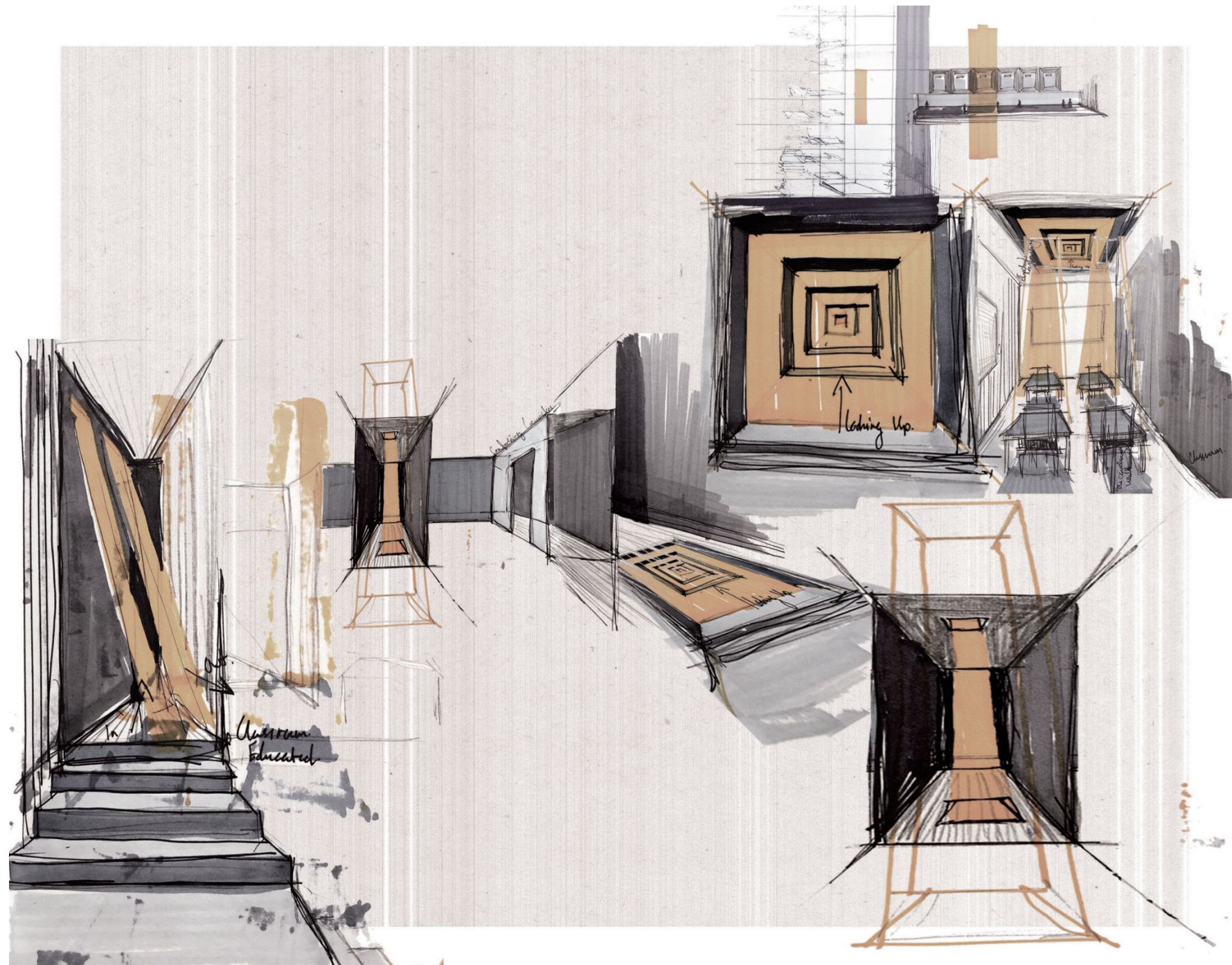
Over the following pages you will find a selection of sketches taken from the project 'Exhort: The Essence of Obsolence'



## Exploratory sketches

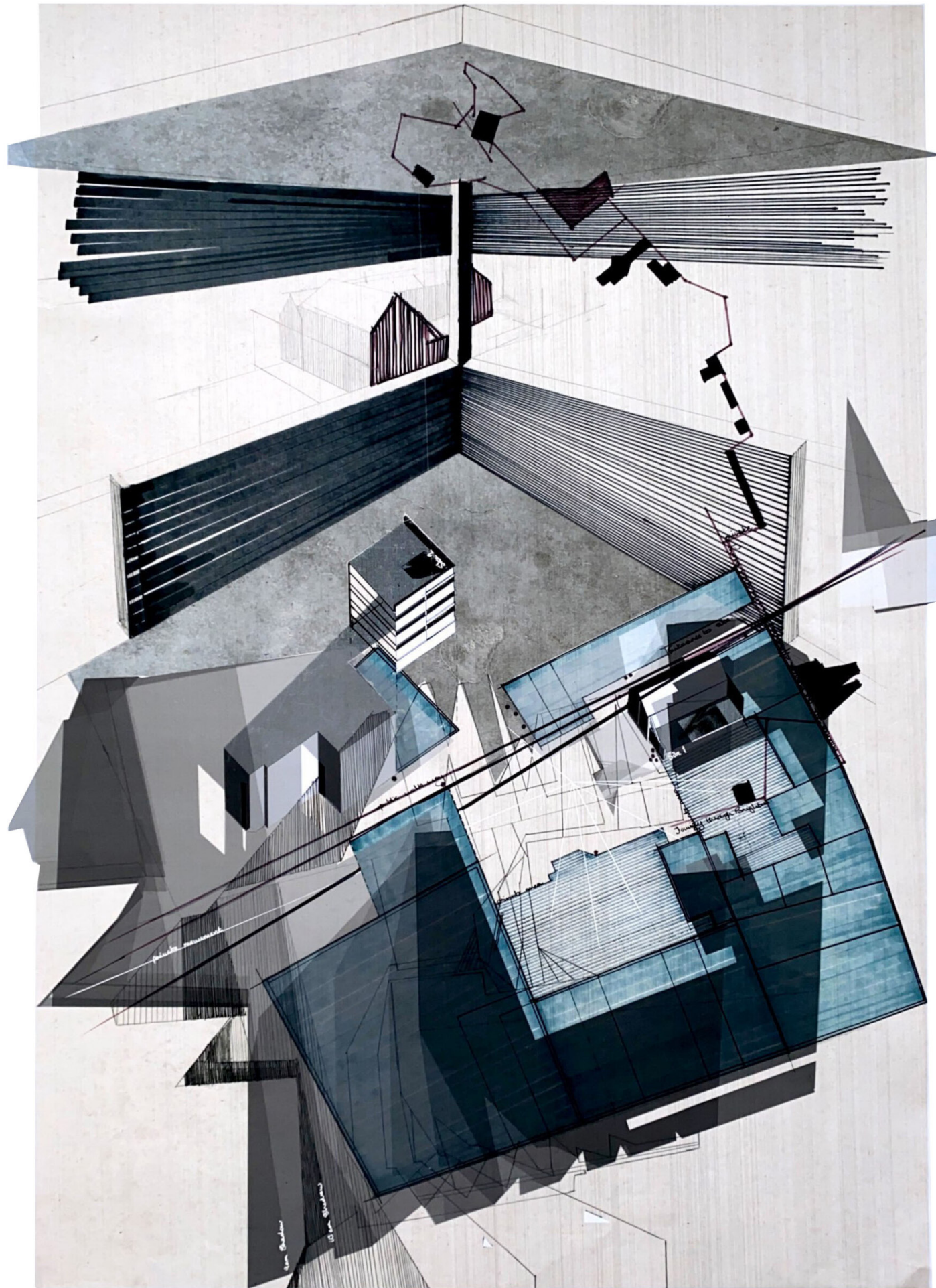
This technique included describing tone and vibration through visual representation using a variety of mark making.





Concept sketches (left & right)  
 Visualising some of the interior features





Map (left)  
Depicting a derive through the  
Streets of Brighton, focusing  
on pockets of interstitial space.



Section (right)  
Combining sketch techniques  
with technical drawings