



1 BRIEF

PROPOSAL

The vision for this proposal is to re-locate Edinburgh Judo offering a new design scheme. The aim of the design scheme is to create an environment that can accommodate all facilities needed for the athletes, provide increased space for the growing numbers of the club and provide more opportunity to build stronger relationships within the community through Judo, by creating an accessible environment that closes the gap between community and athlete culture in a specific and dedicated space.

APPROACH

The process starts with identifying a host building that would appropriately accommodate the needs for this particular design scheme, followed by analysis of the site and building plans.

DESIGN

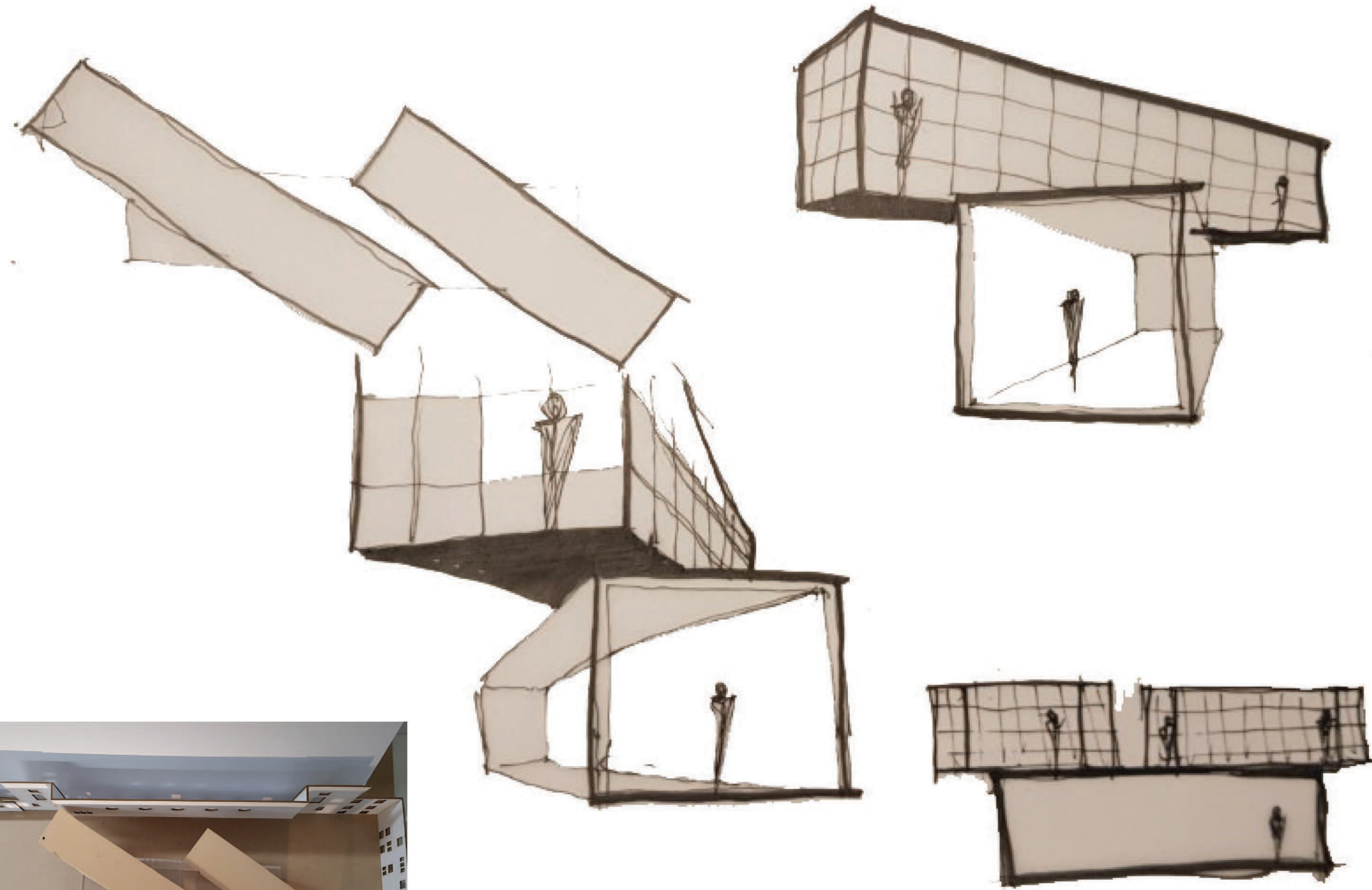
Using old armour to support a new prospect, working with the existing architecture and building form to create a concept specific to this project. With this proposal the intention is to address our sporting environments and how they can be improved through design principles.

SUSTAINABILITY

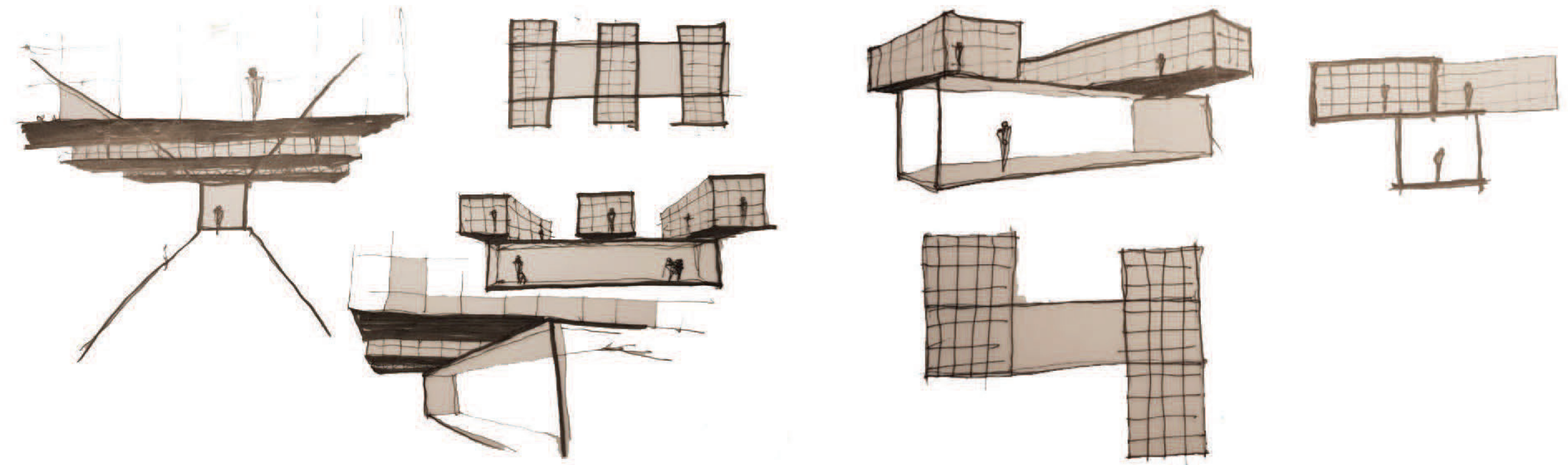
Eco-friendly materials can be incorporated into the design scheme, however for this particular project, increasing the flow of natural light into the building would be beneficial for user's. By creating an environment that engages with the community this can create opportunities for business, cultural and sporting events.



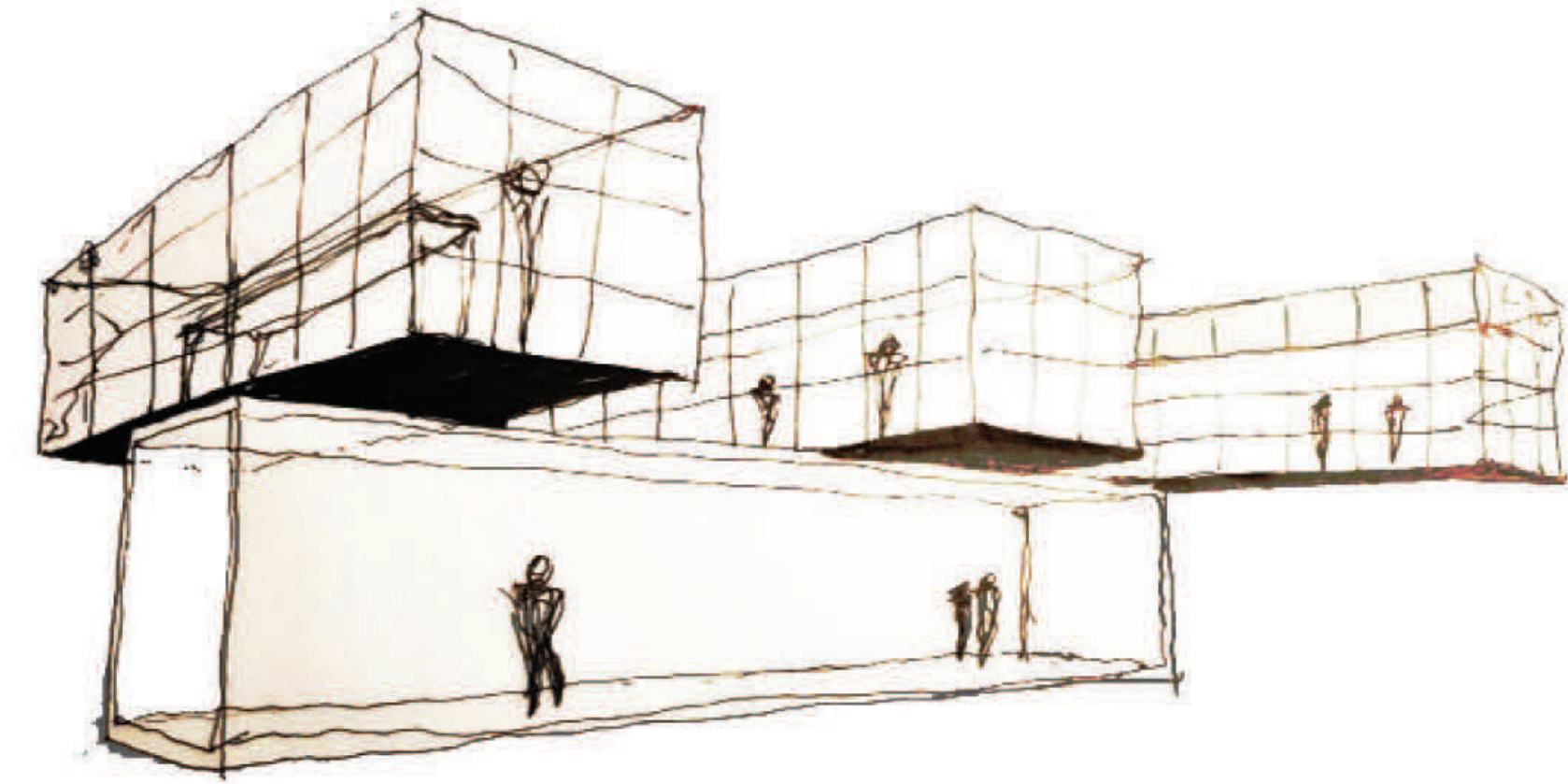
En-Loge Model

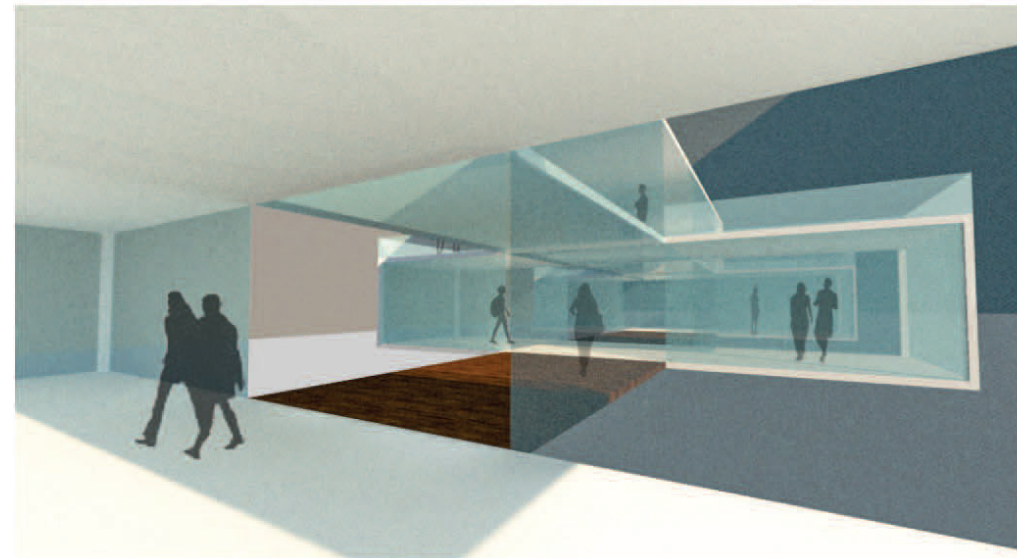
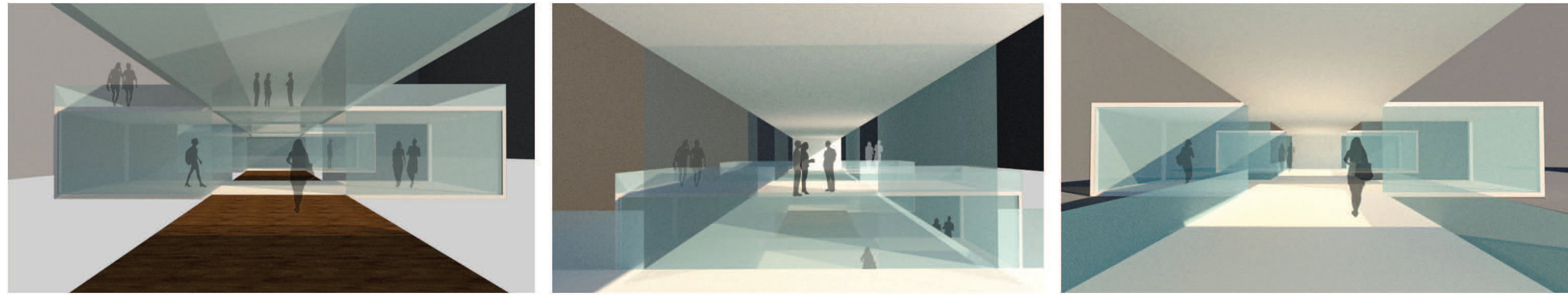


Initial Sketches

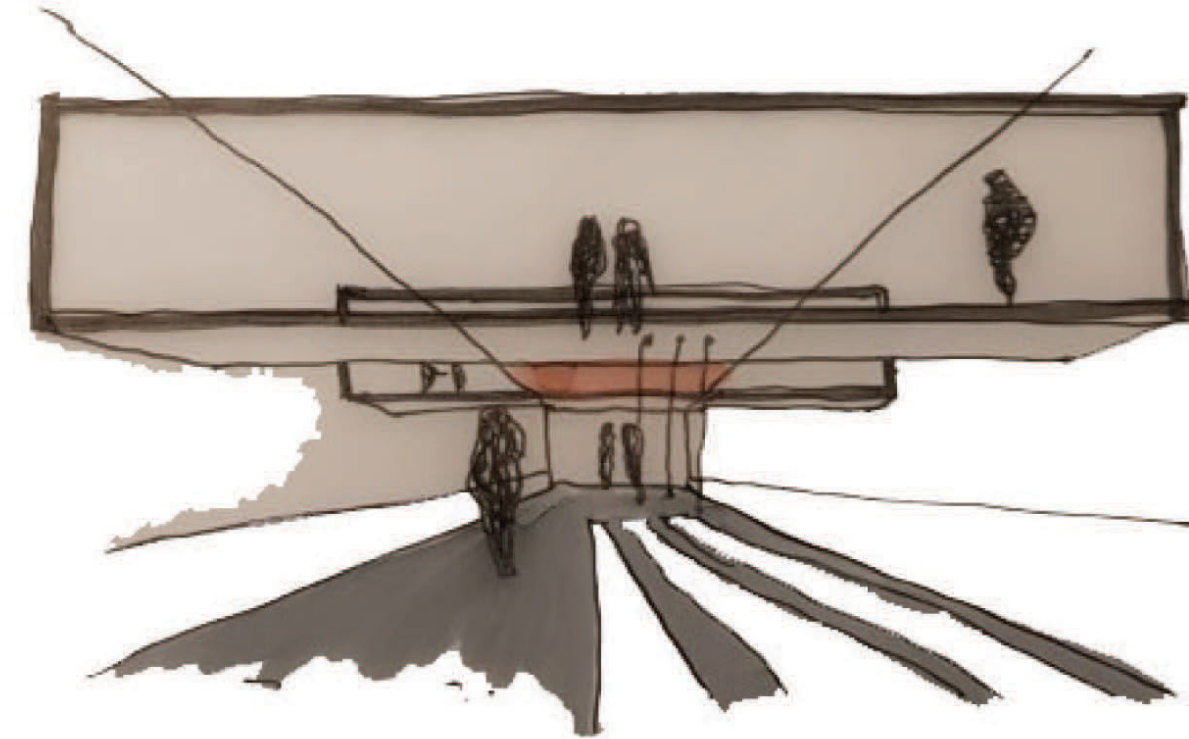
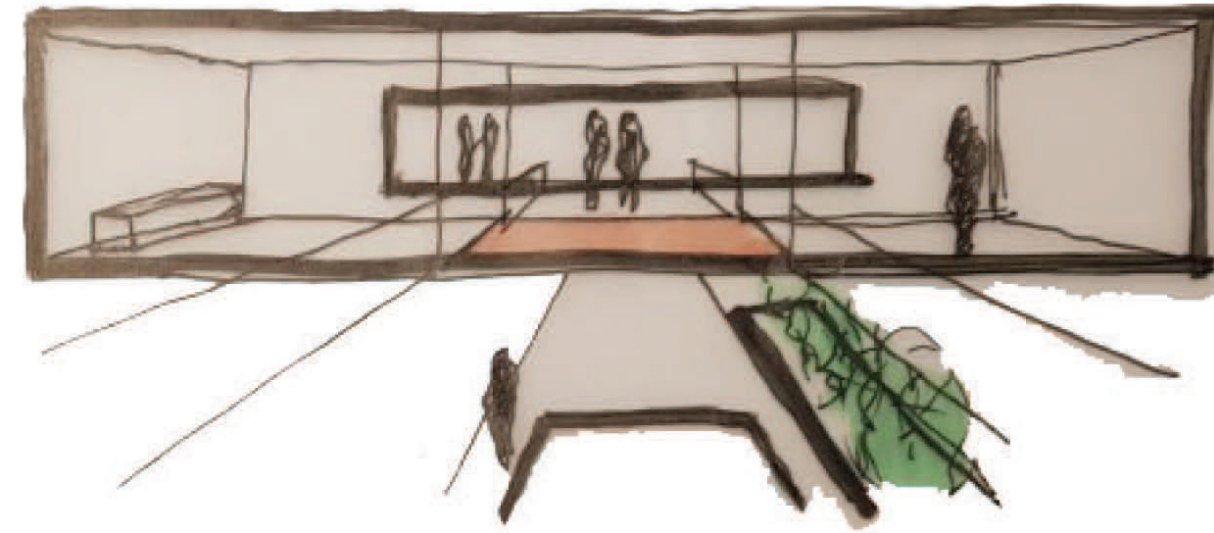


Initial Sketches

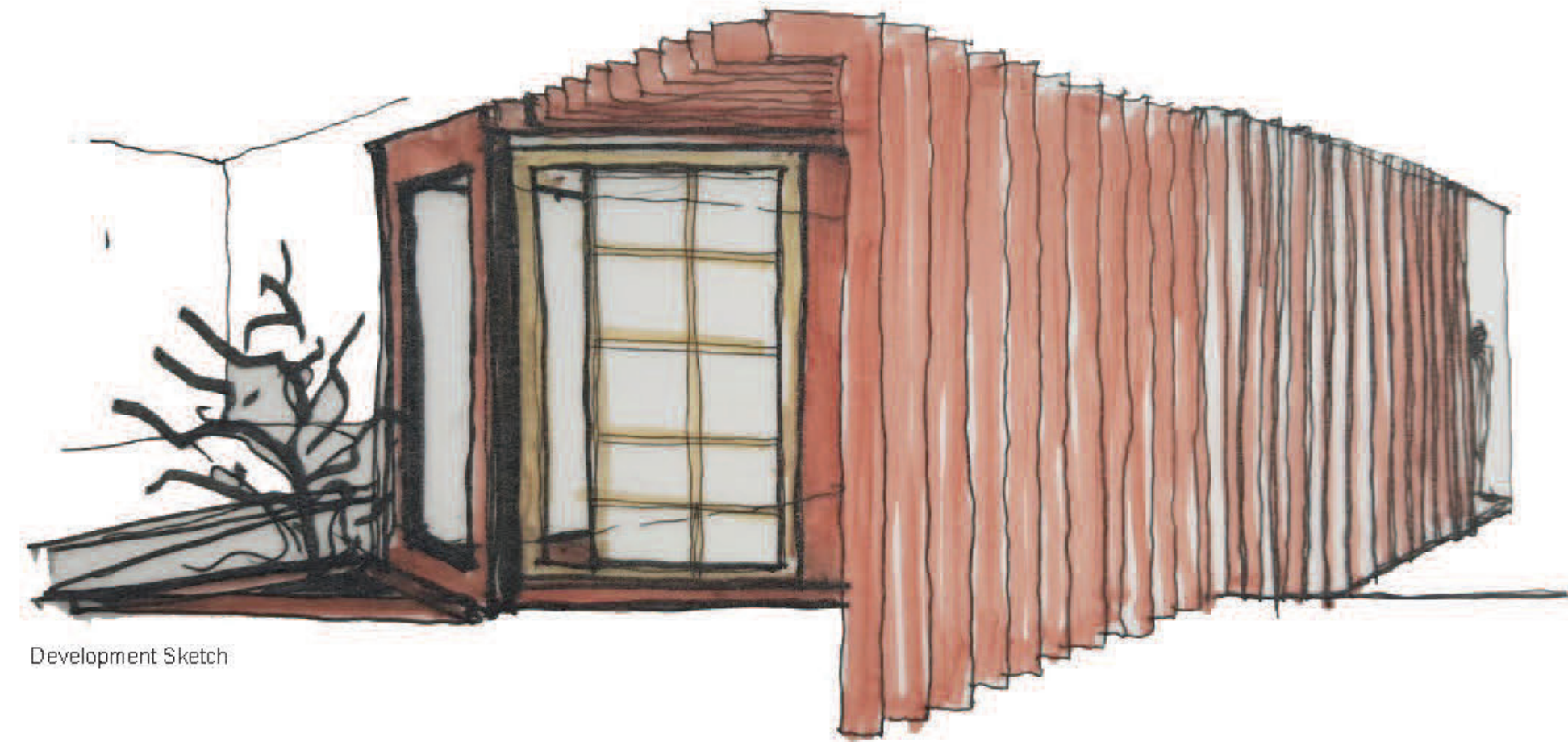




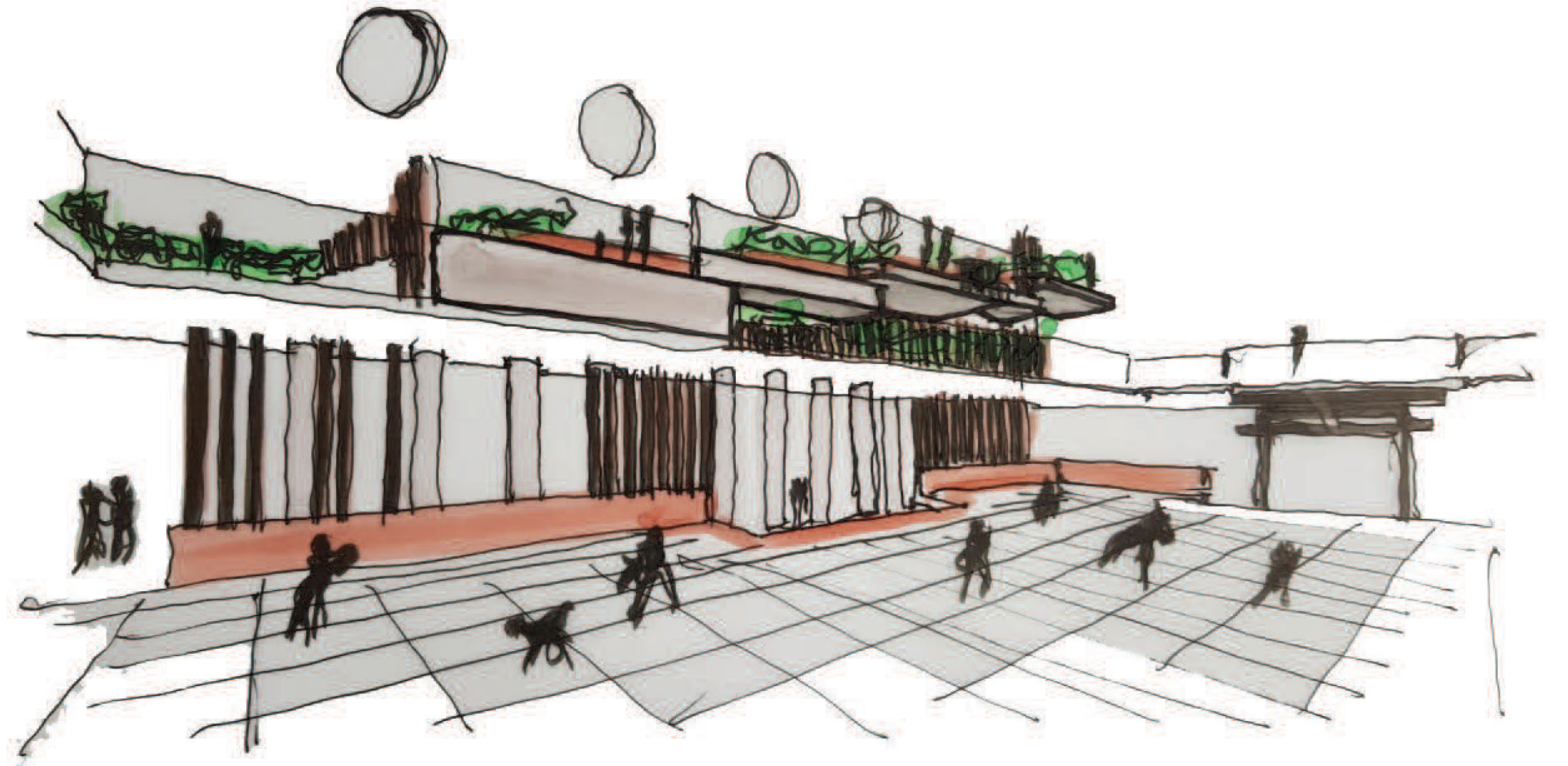
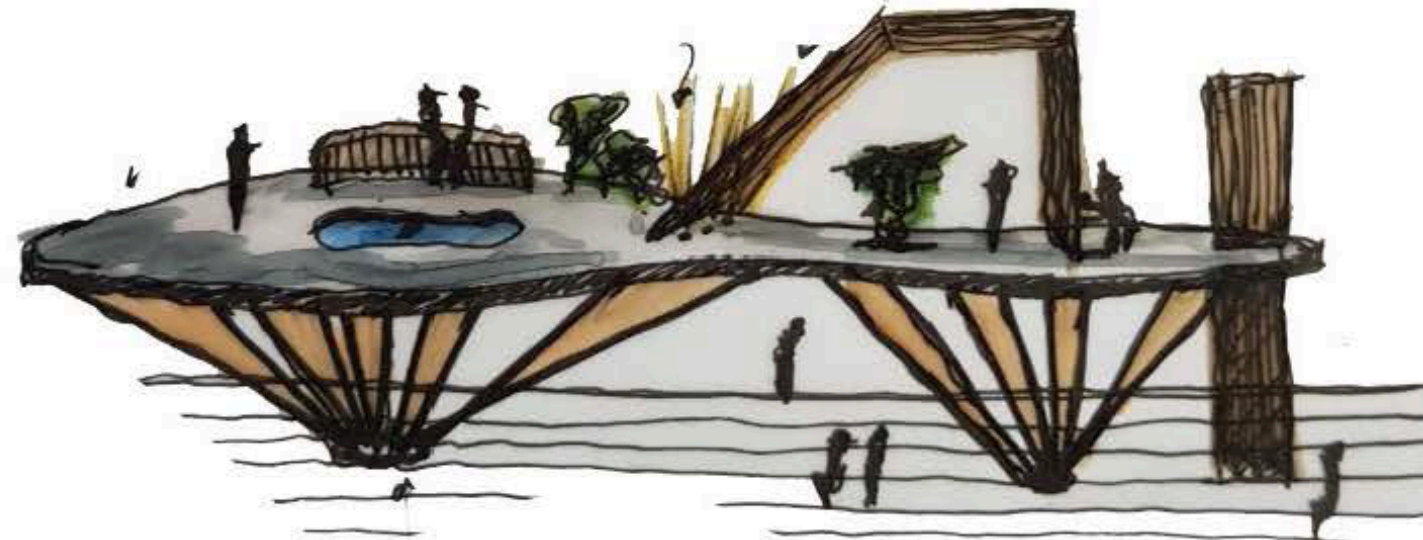
Experiential renders



Development Sketch

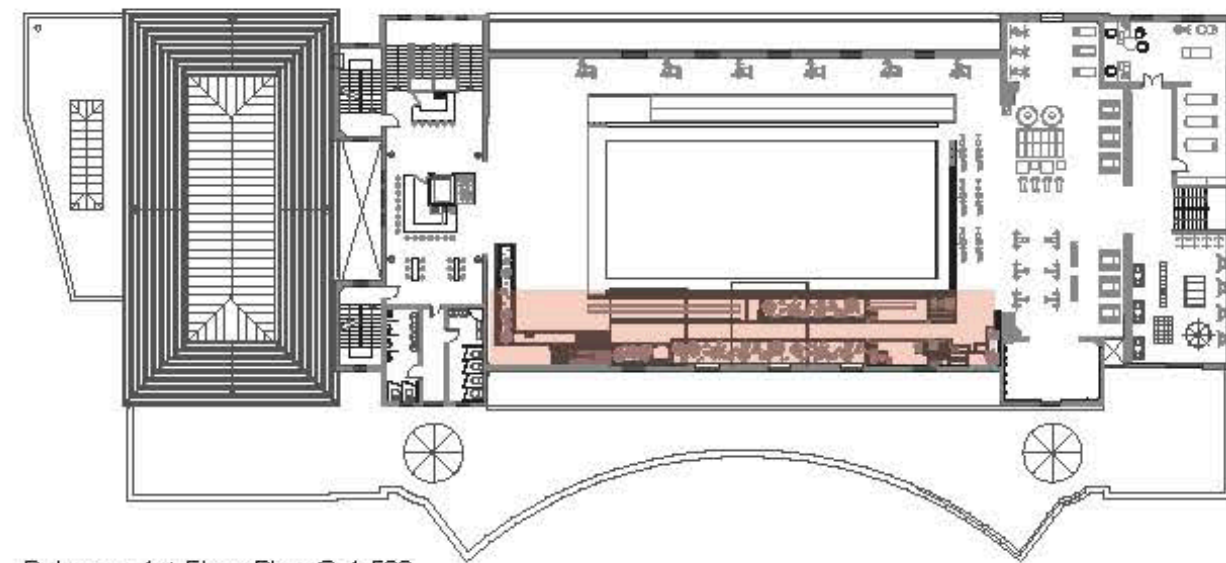


Development Sketch

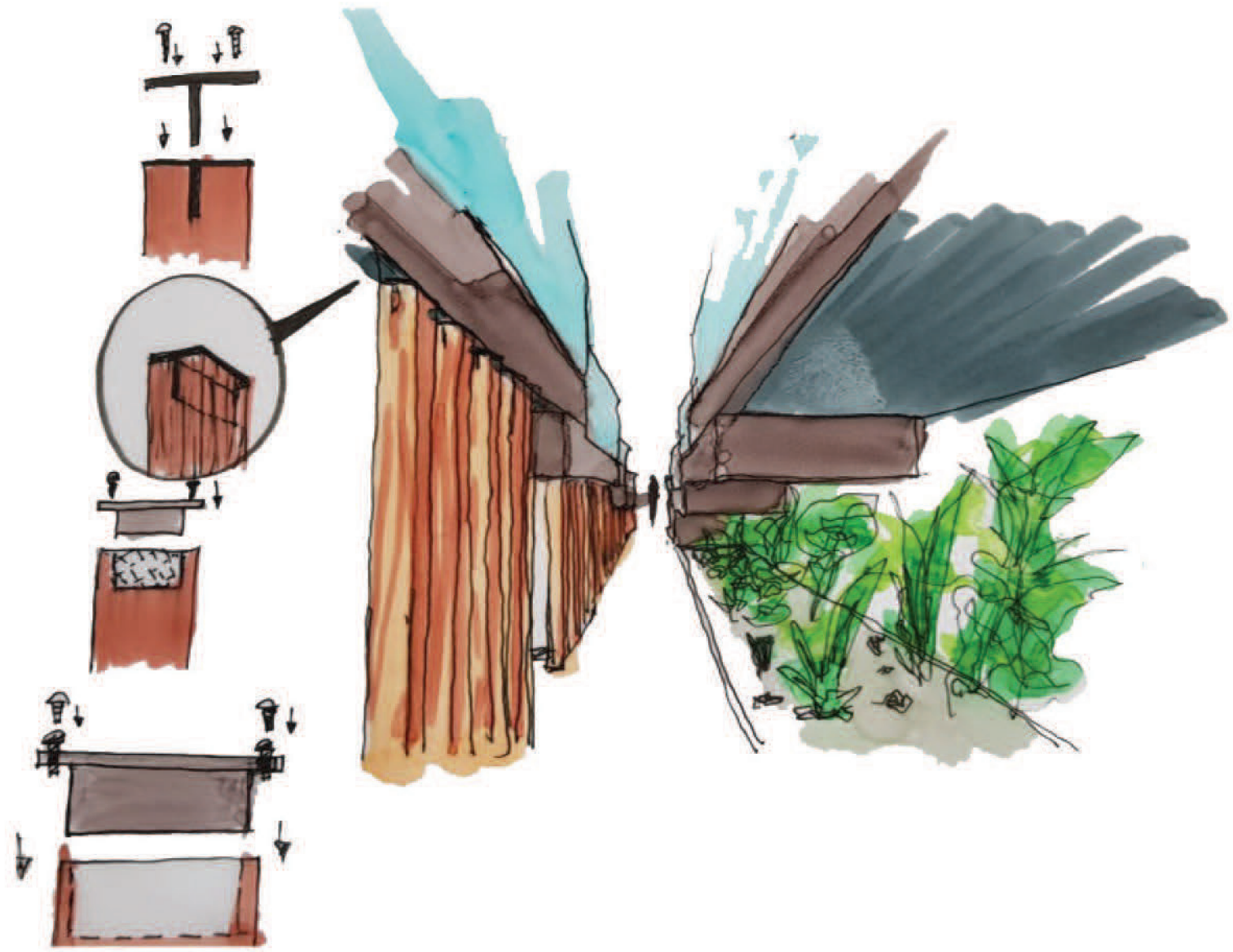


THE GARDEN

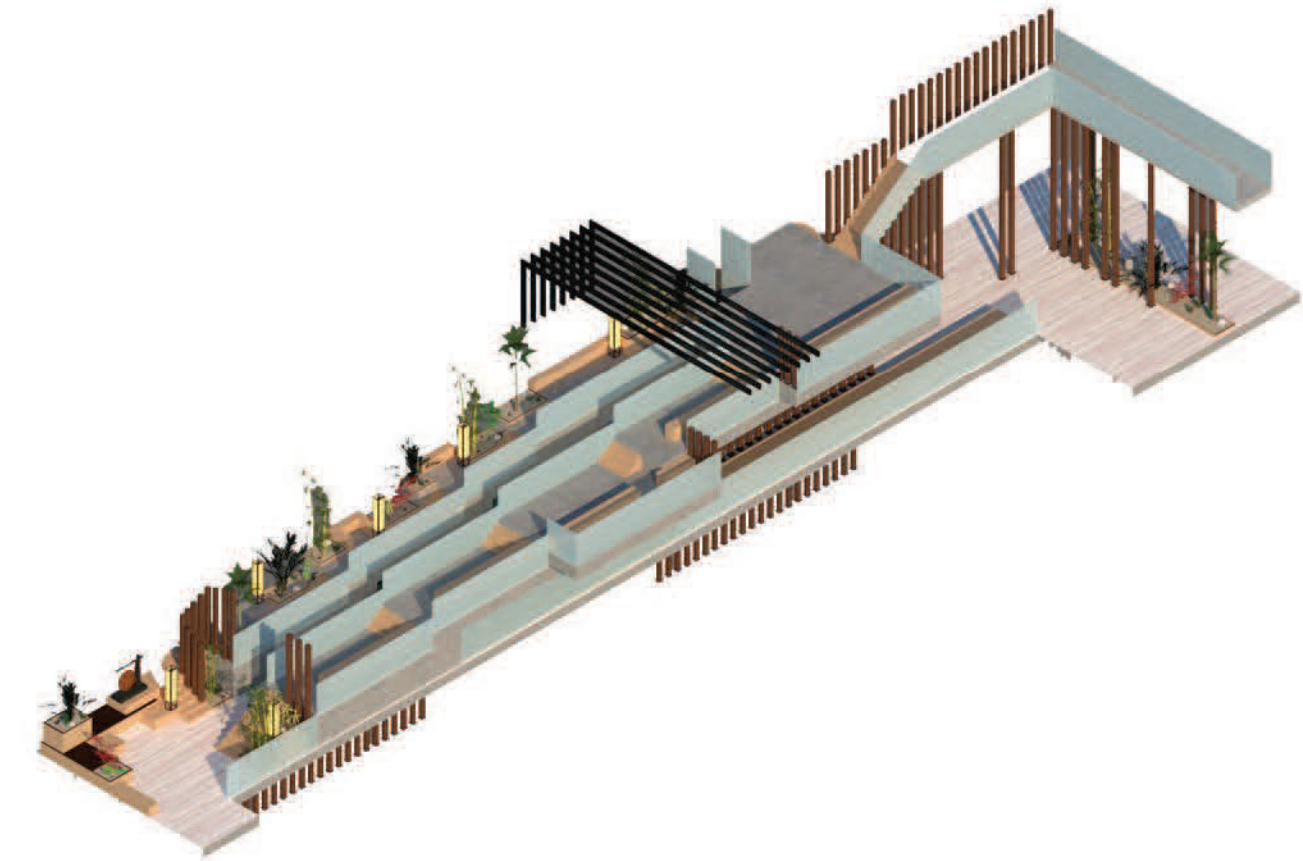
The garden is a two level element of the major space designed to link the balcony with the zen suite, at the same time creating higher levels of spectator viewing for competitions or for general use. A relaxing space for all to enjoy and to witness Judo with a spatial experience. A walkthrough splits the garden allowing for a linear flow, a wheelchair lift has been incorporated for accessibility.



Balcony - 1st Floor Plan @ 1:500



Development Sketches



Garden - Iso View



Garden - Rear View

