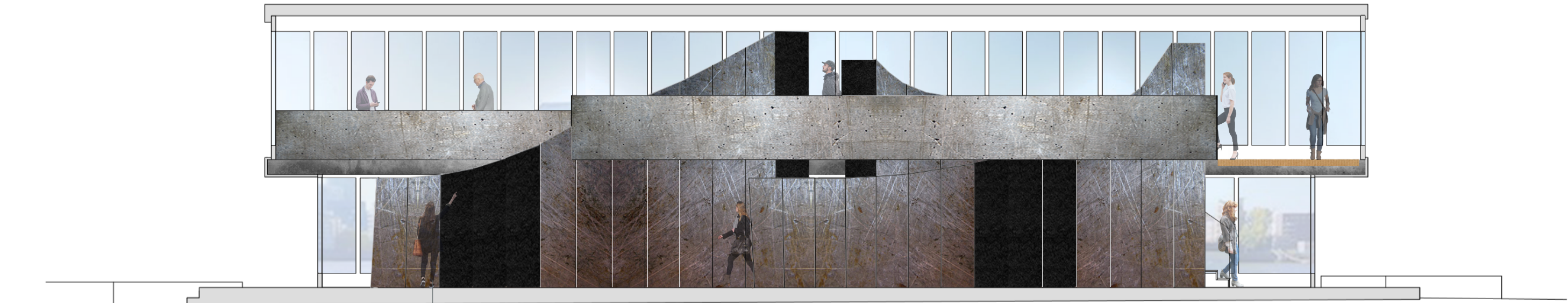


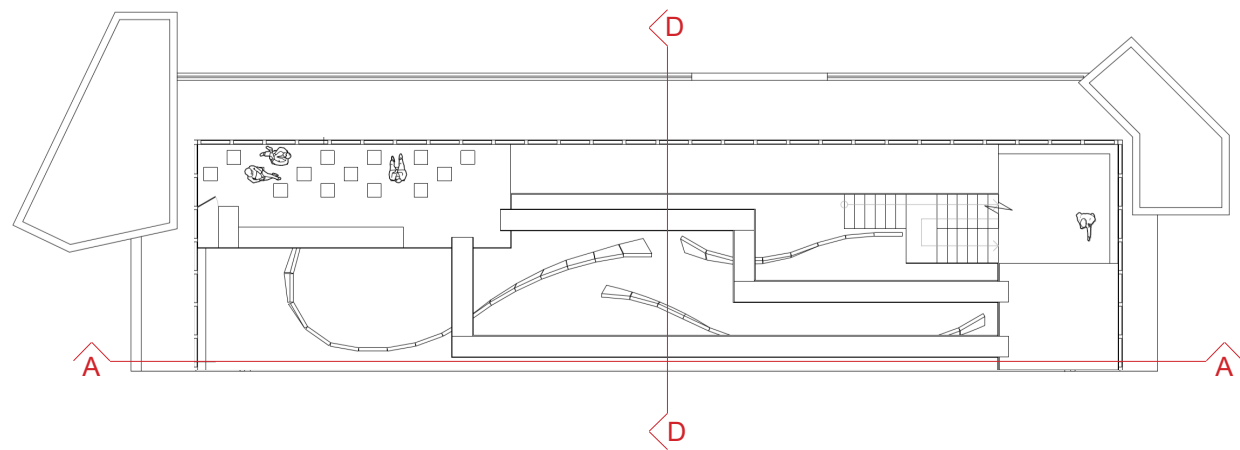
'BIG STRUCTURES' - TACTILE EXPERIENCE



SECTION AA
1:100@A3



Tactile surface experience



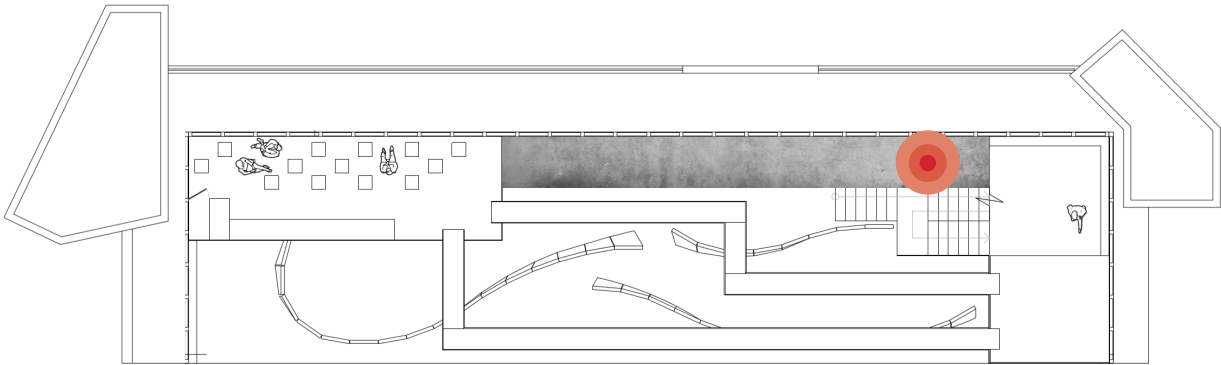
SECTION DD

Velvet covering some pieces of the 'Big structures' in the narrow parts in which the people passing by are gonna touch it changing it's color and leaving a trace behind

EXIT PATH

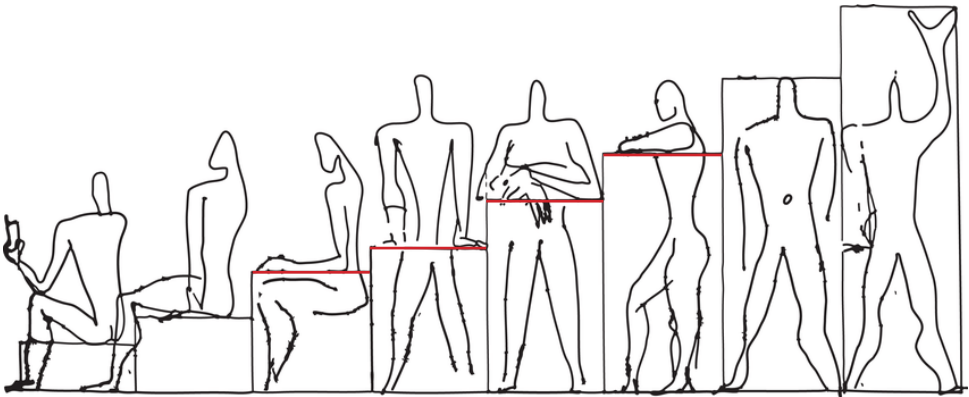


The experience from the refreshment area to the exit is a long walk in a path that goes along the long side of the building andthe costumers can enjoy both the view of the riever thames from the first floor or look down inside the building and looking at the people walking through the ‘Big structures’



PLAN

INTERACTION WITH THE EXHIBITION SPACE



The Modulor
Le Corbusier

The heights of the exhibition shelves follow The Modulor's ones highlighted in red