



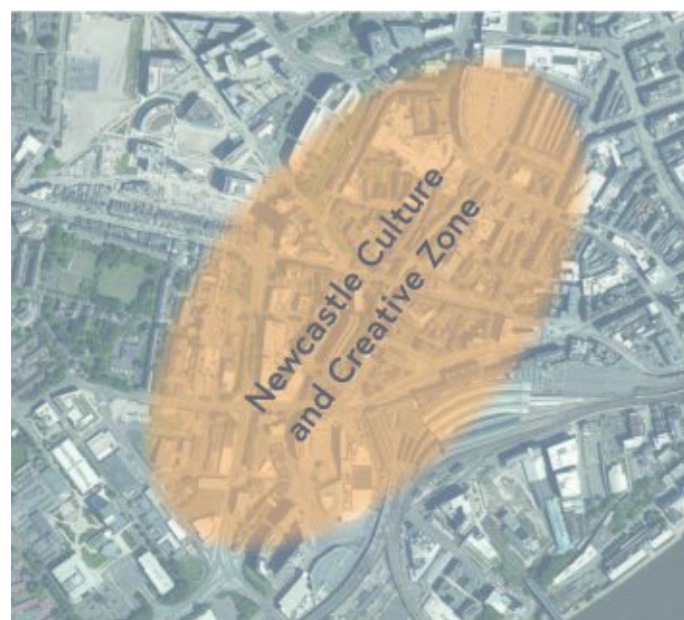
G  
I  
B  
B  
  
C  
H  
A  
M  
B  
E  
R  
S

PHOTOGRAPHY CO-WORKING HUB



Gibb Chambers, situated in the vibrant heart of Newcastle, serves as a dynamic creative co-working hub tailored for photographers and graphic designers. This innovative space offers a collaborative environment where professionals can work, convene for meetings, and utilise the studios. By providing a comprehensive array of resources, Gibb Chambers fosters connections and collaborations among like-minded individuals who may otherwise struggle to connect. Moreover, this hub offers opportunities for artists to showcase their work, potentially attracting new clients and expanding their professional network. By offering a supportive community and a platform for creative expression, Gibb Chambers alleviates the isolation that often accompanies independent work in these fields. Gibb Chambers has everything to support a healthy work life in one space, with a gym and regular yoga classes available and taking place in the basement for members to step away from their work stations.

Westgate Rd, Newcastle upon Tyne NE1 5XU

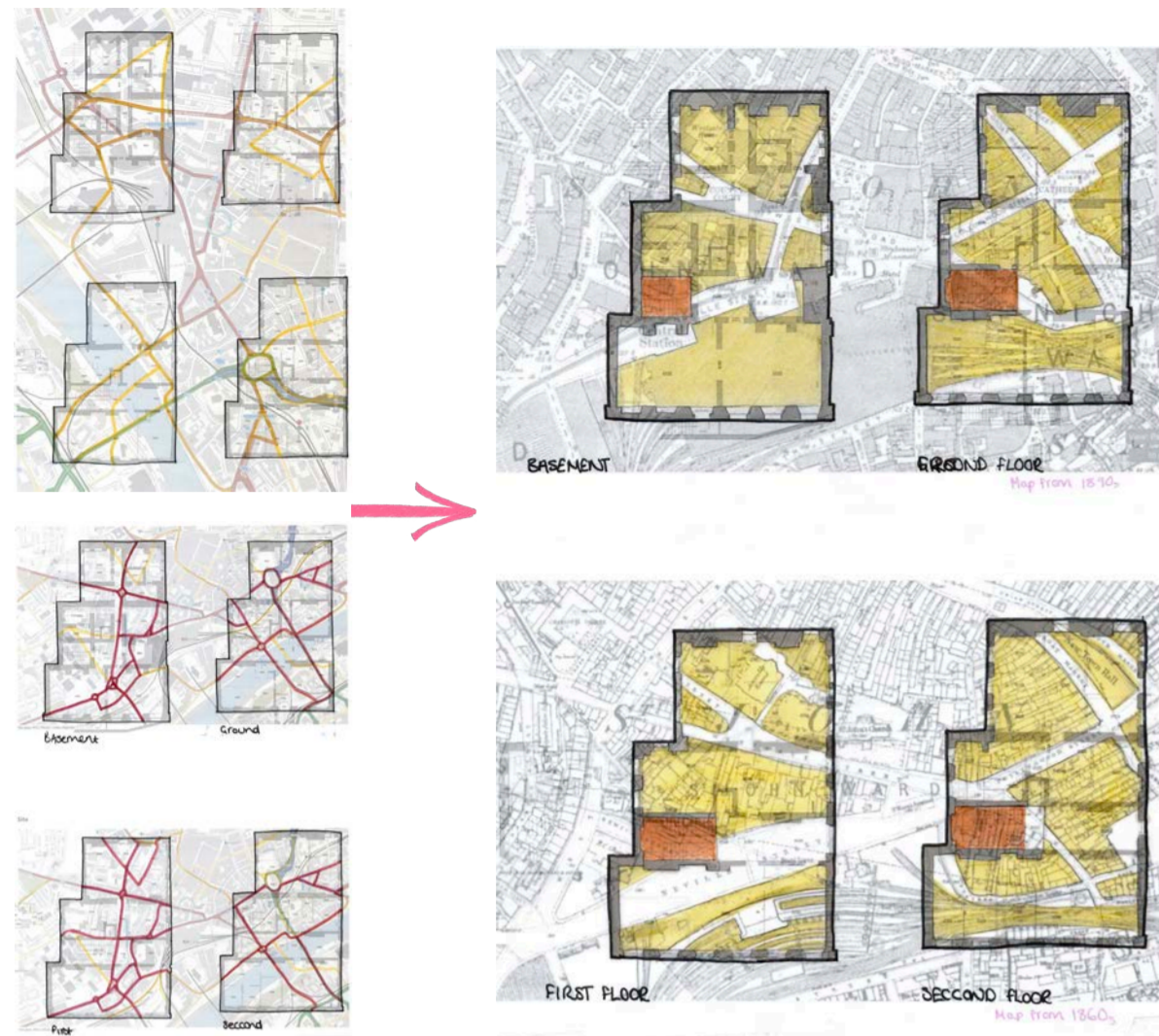


Gibb Chambers is situated within the Newcastle Culture and Creative Zone (CCZ). The aim for this area is to bring creative practitioners and their skills back into the city. There is currently a lack of emphasis on the collaborative workspaces for photographers and graphic designers. The reinvention of Gibb Chambers addresses this issue by creating a workspace that encourages independent and collaborative work within all areas of this sector.



Second Floor - Co-Working room

# CONCEPT DESIGN PROCESS

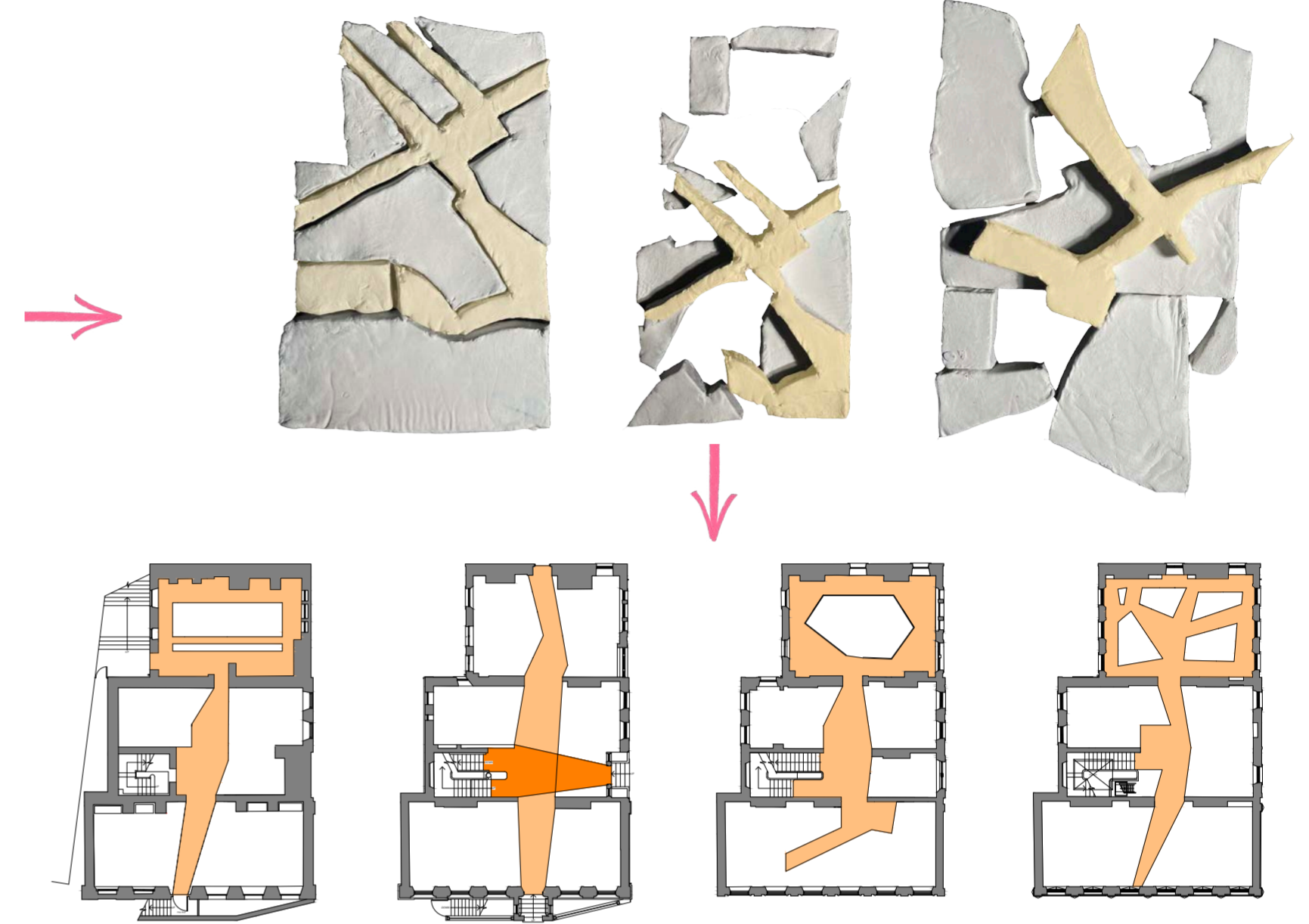


The concept aims to address the lack of dedicated space for photographers and creatives to work, meet and collaborate with like minded individuals within the same field of work.

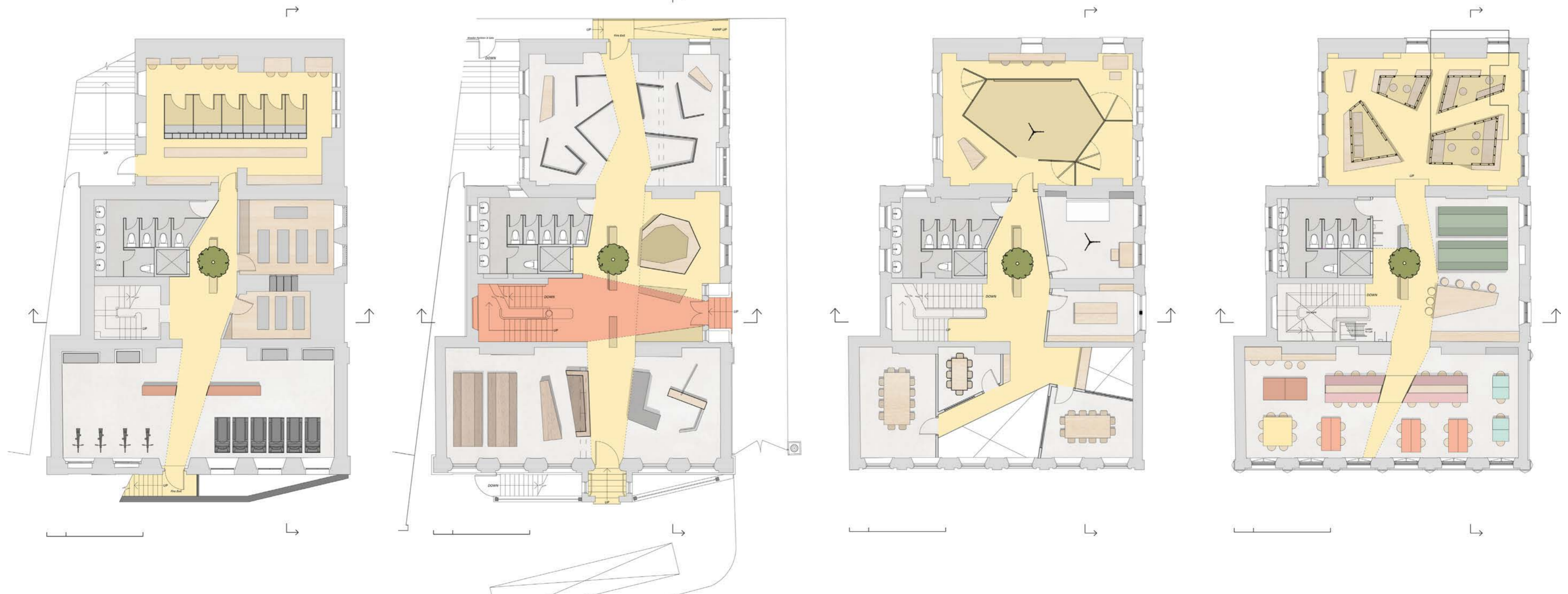


Central to this design is the theme of maps and the 'street' that flows through the site. Fostering a sense of community and connection. The 'street' serves as a bustling artery, that invites people off the streets, where members can easily interact, share ideas, display their work and feel supported by an inspiring creative community.

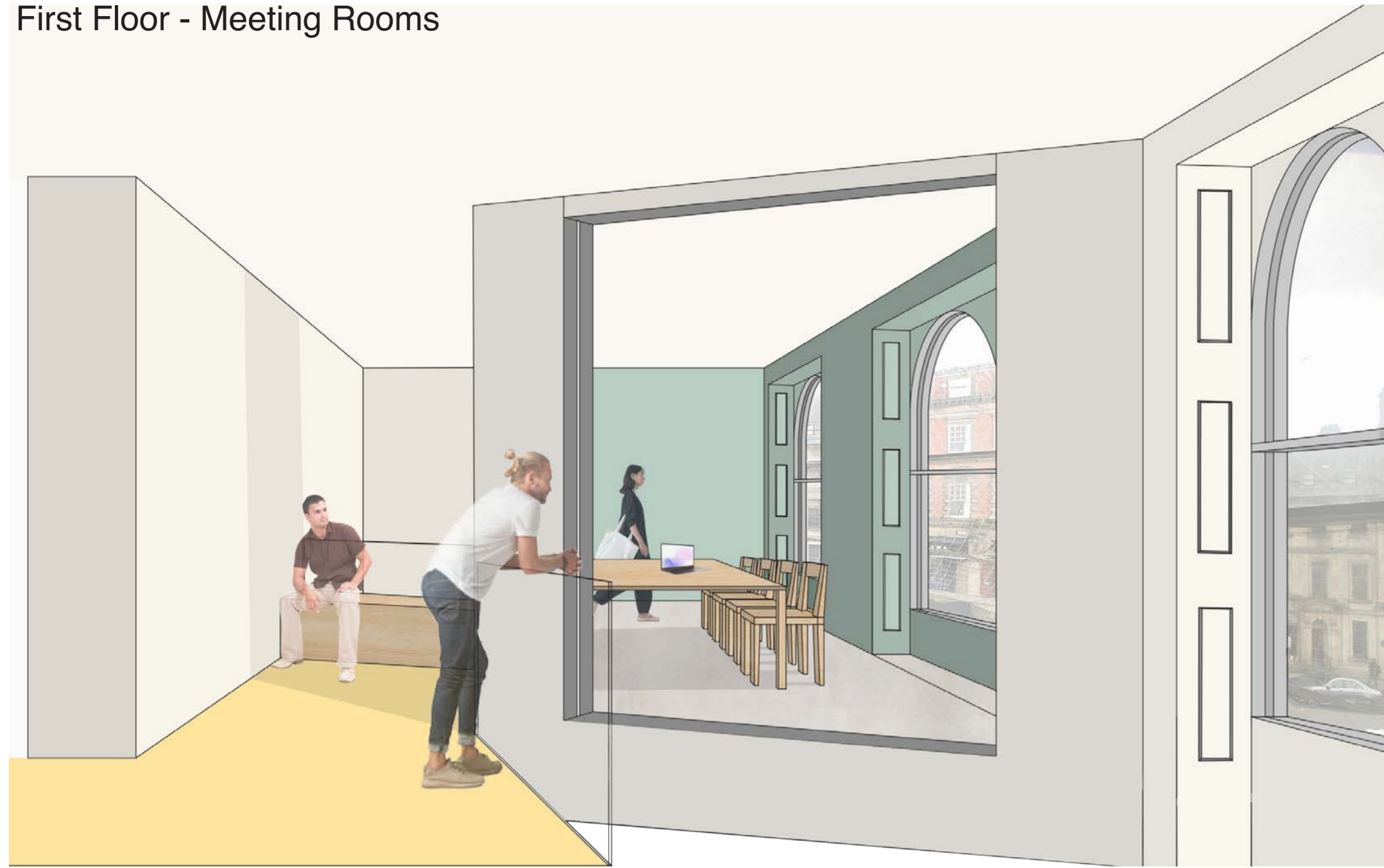
## CONCEPT MODEL - 'STREETS CUT THROUGH SITE'



## PLANS HIGHLIGHTING THE STREET THROUGHOUT THE INTERIOR



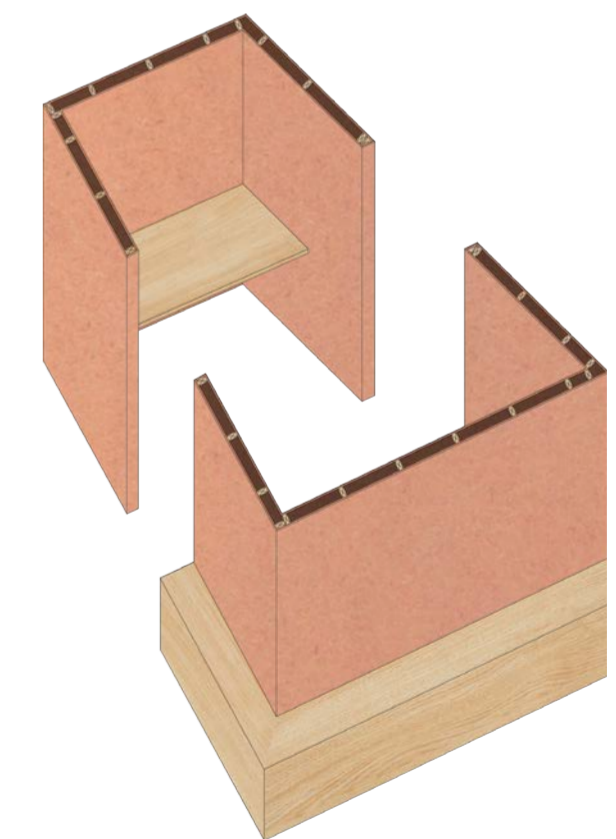
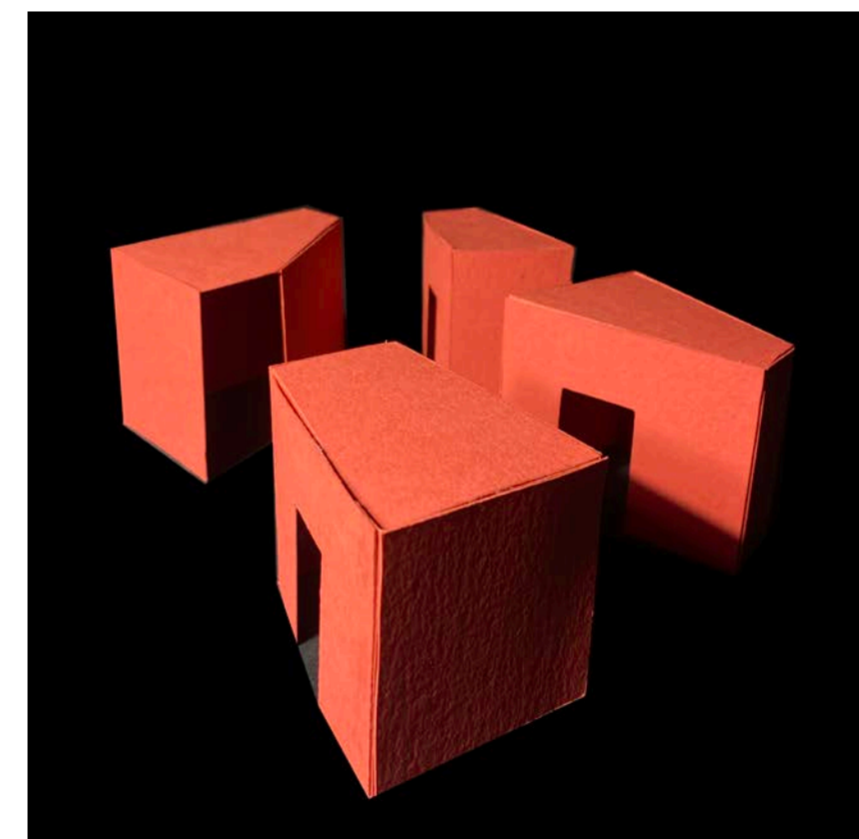
First Floor - Meeting Rooms



Ground Floor - waiting area



Second Floor - Editing Pods



PODS - The editing pods create an enclosed environment for the creatives to utilise the computers without disruptive glare from the windows. they also create a quite environment that individuals can take themselves off to, to work individually without potential disruptions.

They are made up of Valchromat, with insulation within the structure, reducing the need for heating in the surrounding room.

## AXONOMETRIC AND LONG SECTION

**BASEMENT:** Contains a yoga studios and a gym to encourage a healthy work life for the members. On all floors in the centre of the 'street' outside the lift, there is a 'bus stop'. This is where individuals can sit down and wait for the lift. The 'bus stop' has a fake tree made out of recycled metals, which brings the outdoors in, whilst providing a focal point.

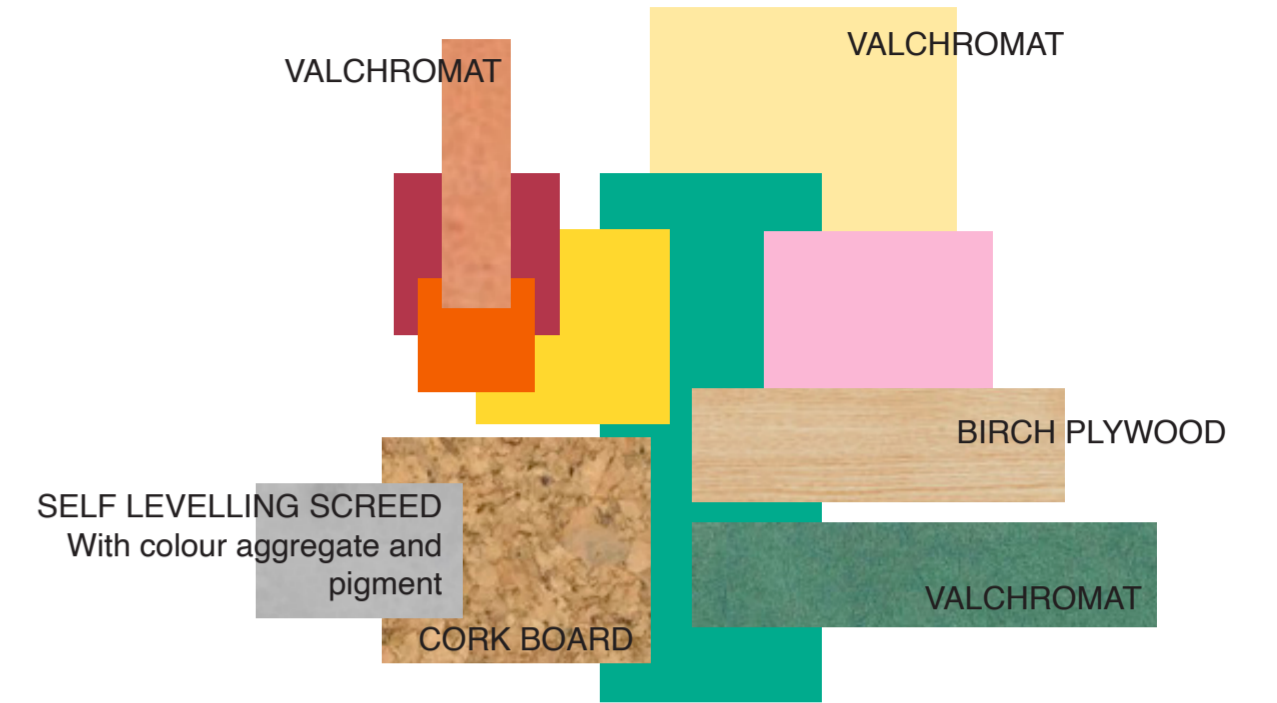
**GROUND:** The ground floor is open to the public, with a cafe and little shop at the front of the building for the members to display and sell their work. The exhibition space at the rear of the building can be shut off and utilised in the evenings for events. The cork boards are both within the entrance and the waiting area, which provides a space for members to pin up and display their work to the public.

**FIRST:** On the first floor there are three meeting rooms varying in size, for the members to meet with clients in a professional setting. These have been placed at the front of the building to maximise the light. At the rear of the first floor there are two fully equipped photography studios. The larger studio contains a pod which has panels that can be opened or closed, to manipulate natural light. Alternatively the pod can be completely shut off, for the use of artificial light. The multi functional pod allows for private areas through the use of the sliding panels. The enclosed spaces can then create a changing room and makeup station.

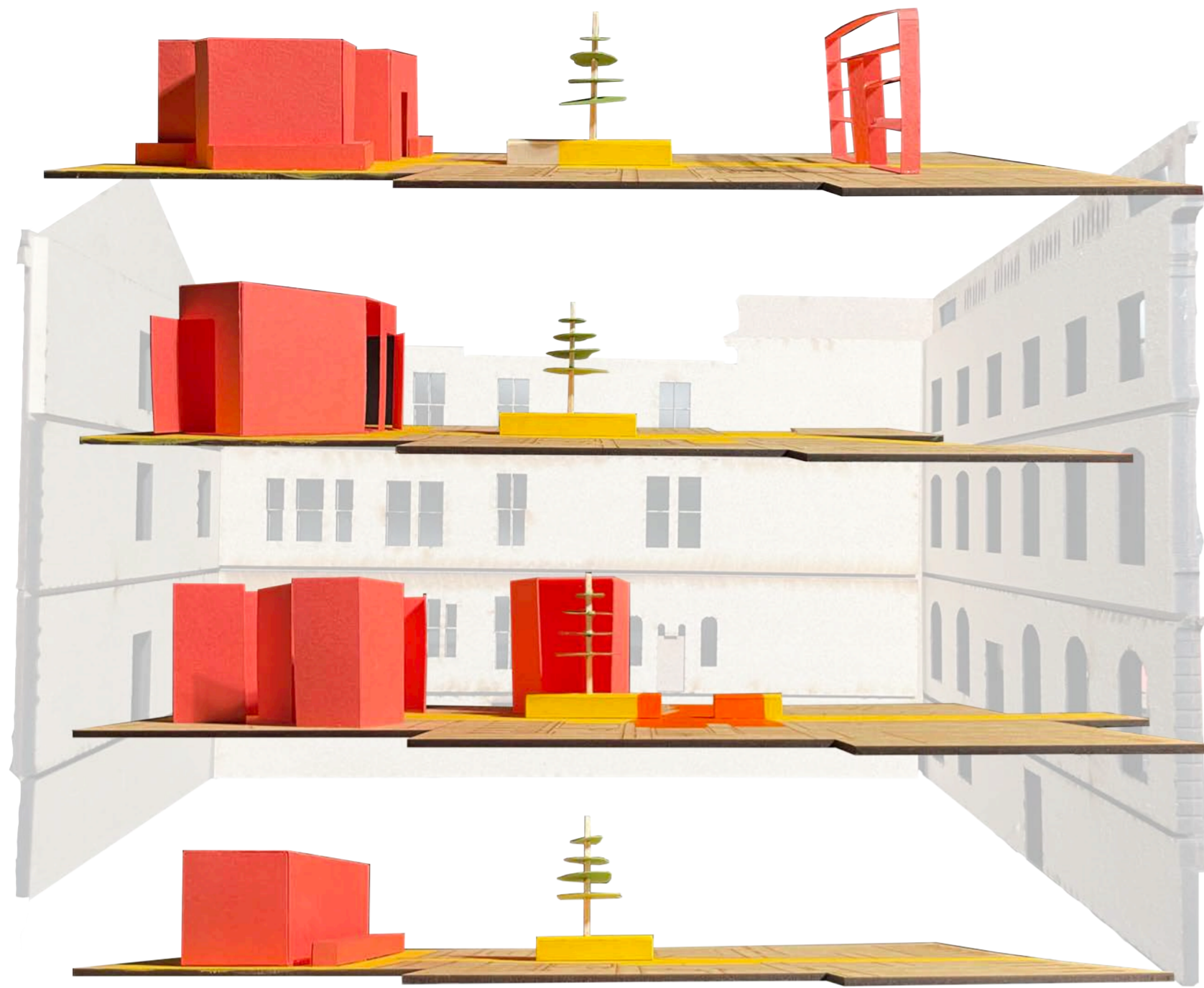
**SECOND:** The second floor houses the private co working spaces, at the rear there are four pods. One printing pod, and then three editing pods which reduce glare on the computer screens, as well as creating a private room for the members to work. In the middle there is a communal kitchen with long bench tables for individuals to come together and talk with like minded people. The front of the second floor is a bright co working space that has ample desks and a sound proof booth that allows people to take calls without disturbing others.



0 1 5m  
AXONOMETRIC (NTS)



0 1M 5M  
LONG SECTION AA: NTS



This model and edit illustrate how the 'street' flows in and throughout the site. The red three-dimensional elements convey the inserted pods within the scheme.

