

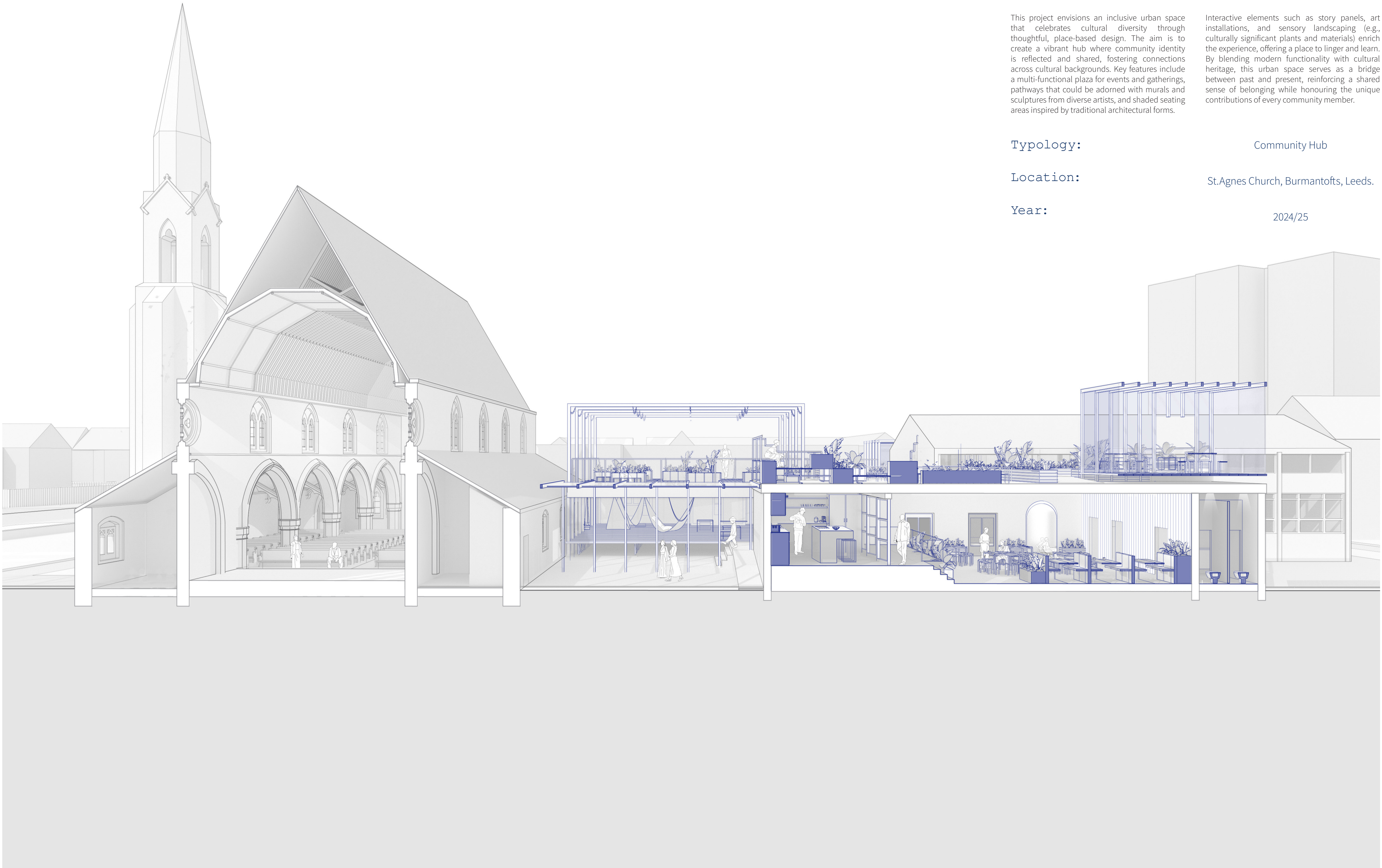
THE LINK:

CONNECTING SPACES AND BRIDGING CULTURES

This project envisions an inclusive urban space that celebrates cultural diversity through thoughtful, place-based design. The aim is to create a vibrant hub where community identity is reflected and shared, fostering connections across cultural backgrounds. Key features include a multi-functional plaza for events and gatherings, pathways that could be adorned with murals and sculptures from diverse artists, and shaded seating areas inspired by traditional architectural forms.

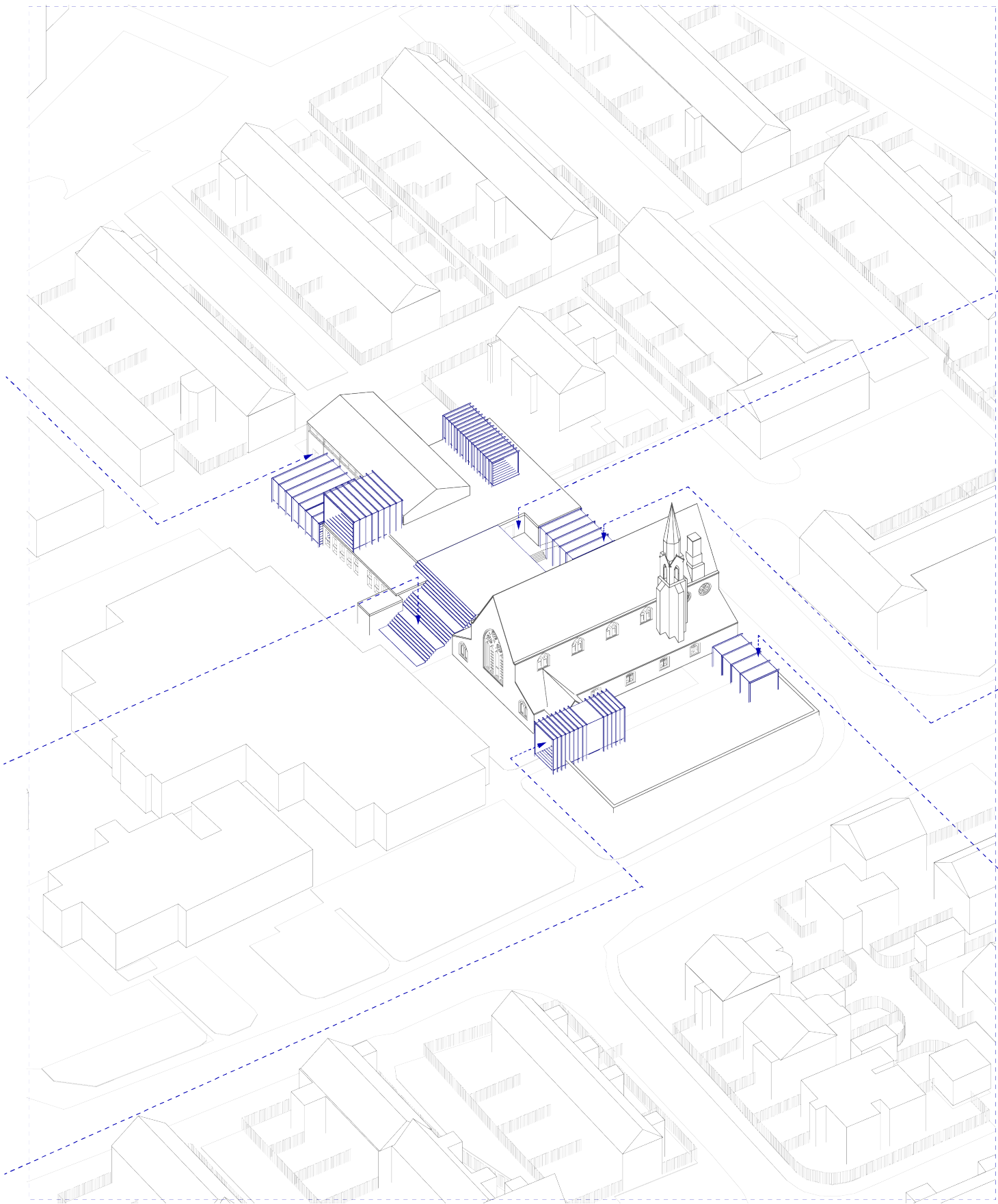
Interactive elements such as story panels, art installations, and sensory landscaping (e.g., culturally significant plants and materials) enrich the experience, offering a place to linger and learn. By blending modern functionality with cultural heritage, this urban space serves as a bridge between past and present, reinforcing a shared sense of belonging while honouring the unique contributions of every community member.

Typology:	Community Hub
Location:	St.Agnes Church, Burmantofts, Leeds.
Year:	2024/25

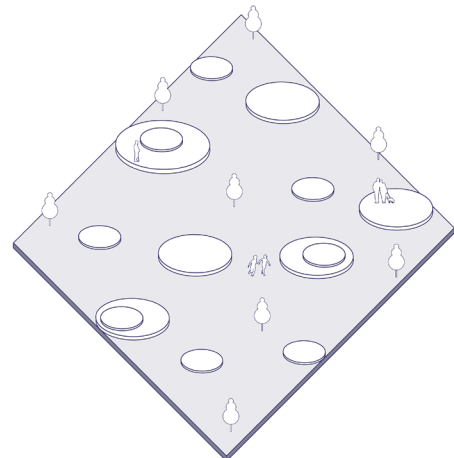
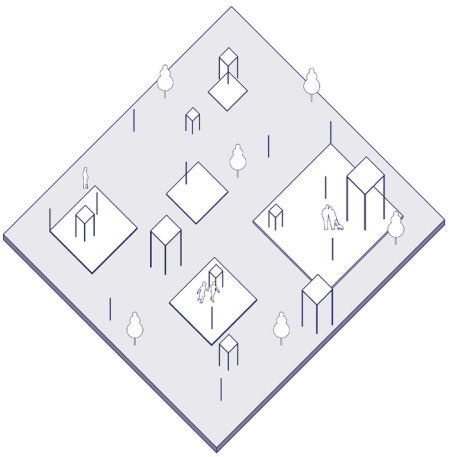
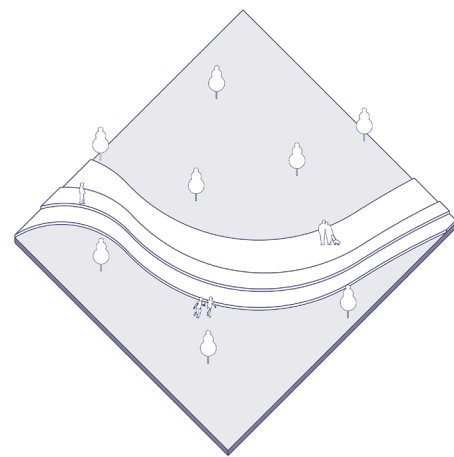


EAST PERSPECTIVE SECTION (not to scale)

THE CONCEPT OF PLACE-MAKING & TRANSITIONAL SPACE:



ENTRANCES DIAGRAM



PLACES DIAGRAMS

These diagrams highlight the use of minimal unintentional design in a recreational setting. each displaying the use of different shapes and forms to create a adaptable space that can be uses in different ways to suit the user.

UNDERSTANDING THE IMPORTANCE OF IMPLENTING PLACE-MAKING IN URBAN DESIGN

Place-making is a multidisciplinary approach to designing and managing spaces that prioritise community needs, identity, and functionality. It focuses on creating vibrant, inclusive, and meaningful places by emphasising human-centric design, cultural authenticity, and community engagement. Key elements include thoughtful physical design, diverse activities,

connectivity, and fostering social interaction. Effective place-making enhances livability, boosts economic growth, promotes social cohesion, and integrates environmental sustainability. Strategies like participatory design, tactical urbanism, and multi-functional spaces ensure adaptability and relevance. While challenges like gentrification and balancing

stakeholder needs exist, successful place-making transforms spaces into dynamic environments that reflect and support the communities they serve.

This project aims to ensure that the space can be used in multiple ways, to reflect and support the needs of the local community in Harehills.

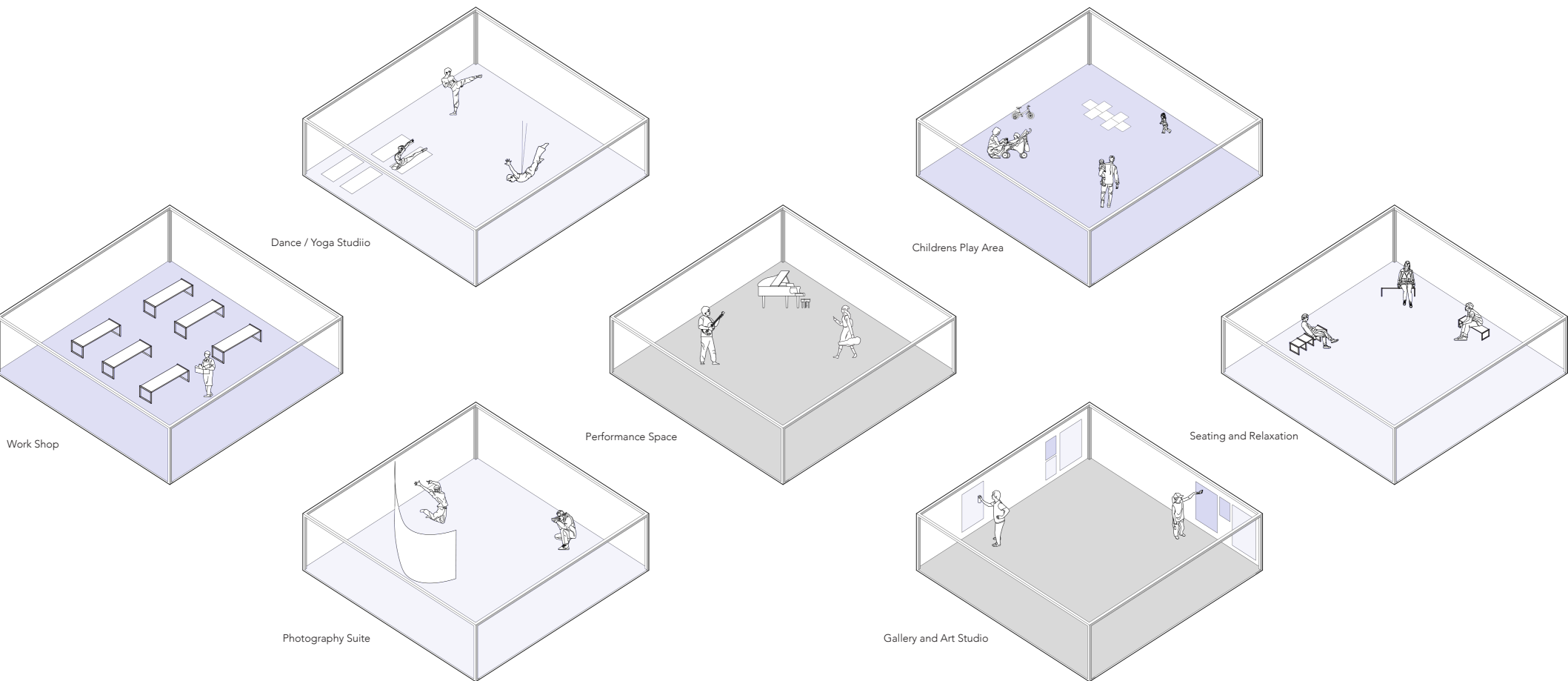
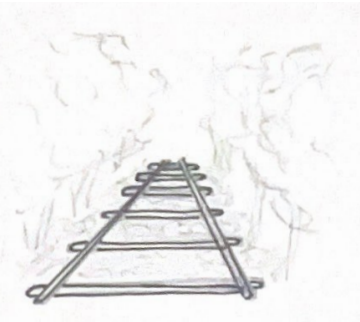


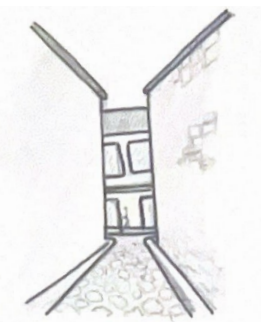
DIAGRAM OF A VARIETY OF FUNCTIONS SHOWING HOW THE SPACE COULD MEET A VARIETY OF NEEDS FOR THE COMMUNITY



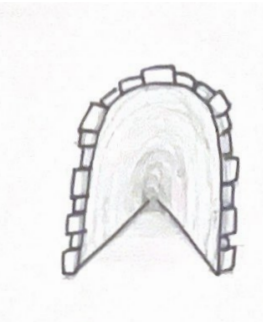
ROADS



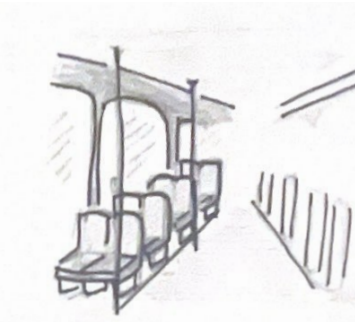
RAILWAY LINE



ALLEY WAYS



TUNNELS



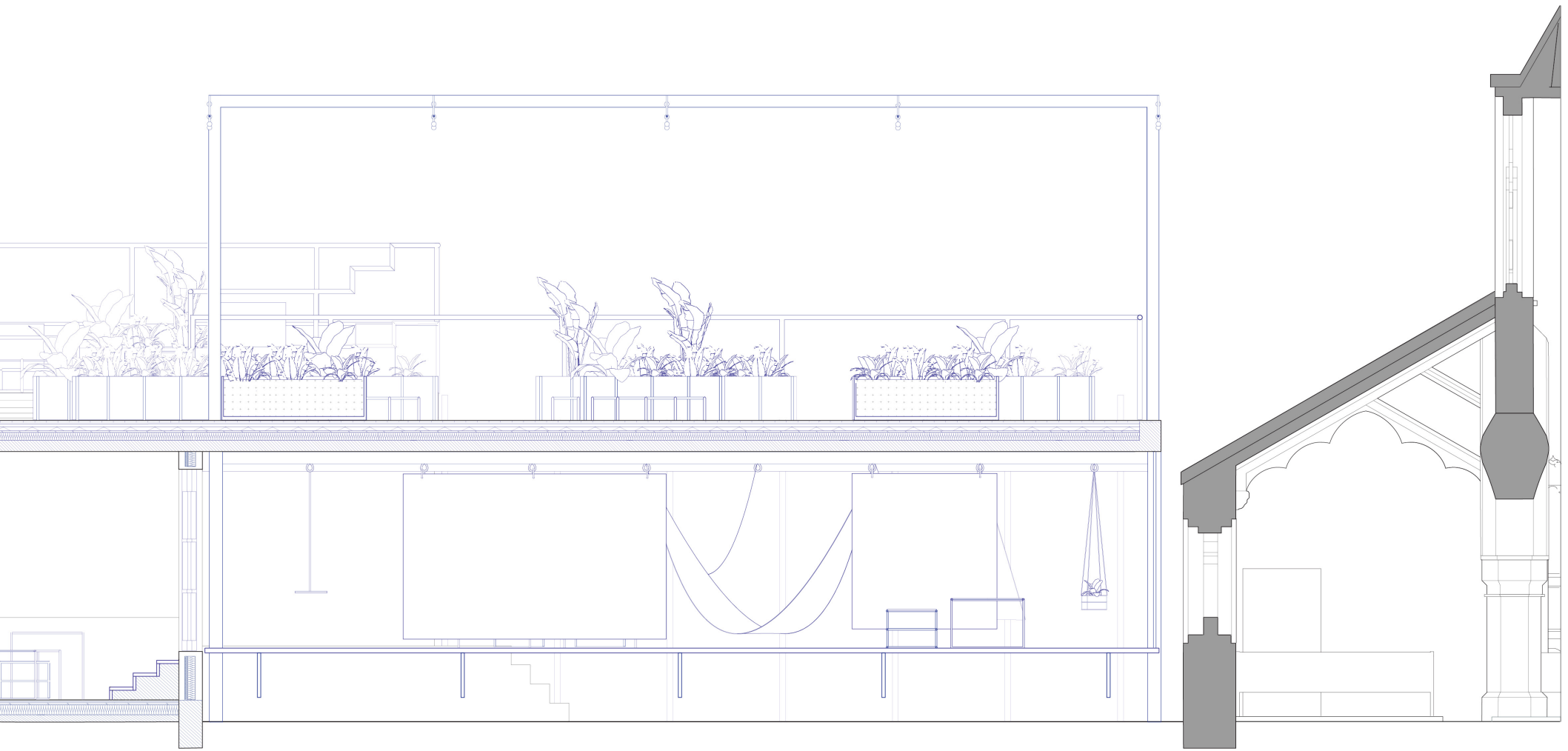
TRANSPORT AISLES

HOW TRANSITIONAL SPACES SUPPORT PLACE-MAKING

Corridors, as transitional spaces in architecture, serve functional and experiential purposes by connecting zones, guiding movement, and shaping spatial perception. Their design impacts navigation, emotional responses, and the atmosphere through scale, lighting, materiality, and visual continuity. Typologies range from linear and efficient to curved or node-based, with

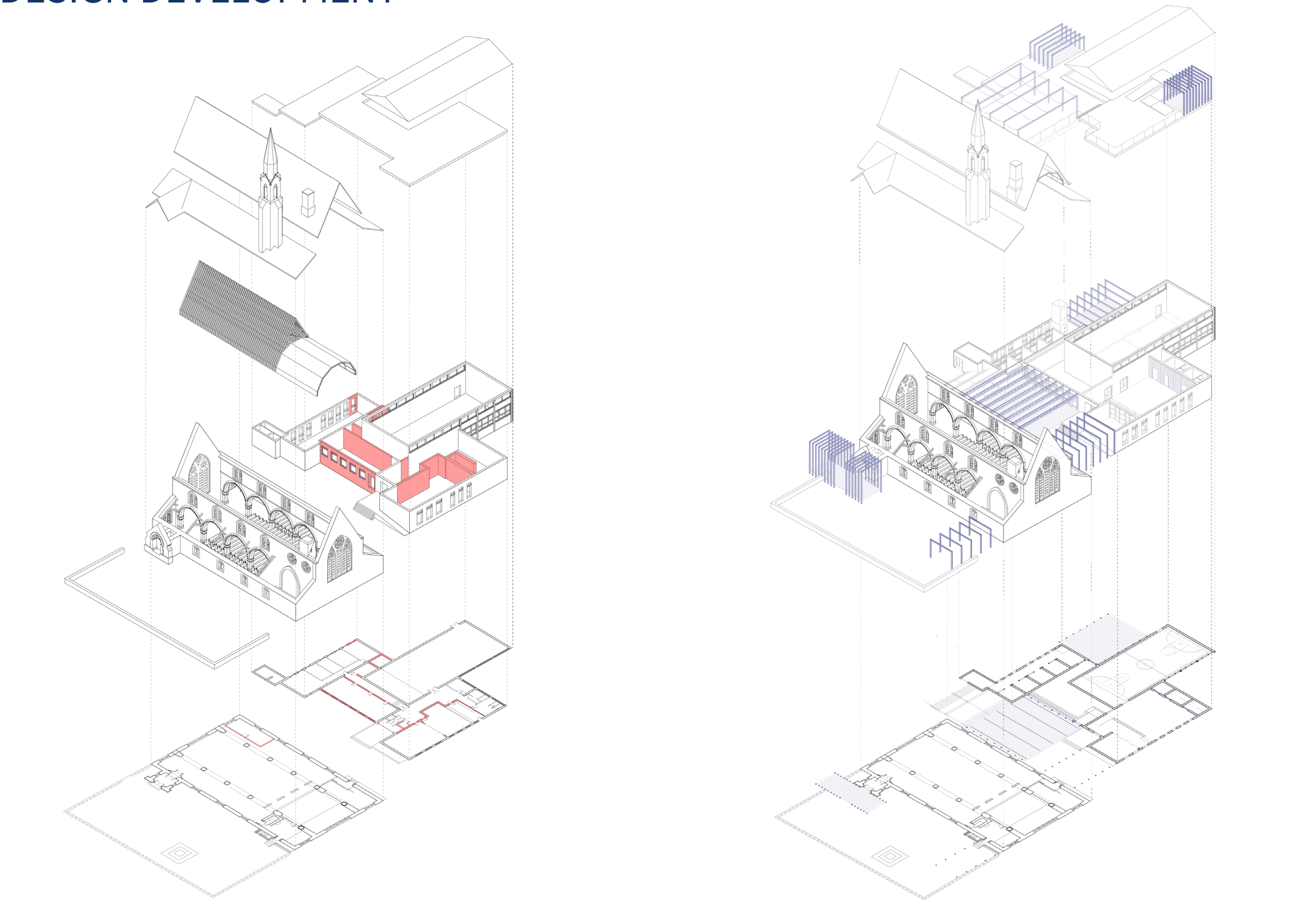
strategies focusing on natural light, acoustic treatments, and adaptive features to enhance engagement. Corridors also carry cultural and symbolic significance, representing transitions or thresholds in various contexts. Effective corridor design balances functionality, user comfort, and aesthetics, transforming them from mere connectors into meaningful architectural experiences.

Each of these sketches display a path that can be followed to reach point A from B, tying two spaces together this is transitional space. Highlighting that transitional spaces can be found everywhere and are a crucial element of design. As Transitional spaces are used daily every where, enhancing this element of design to reflect a community or area could increase the sense of belonging greatly.

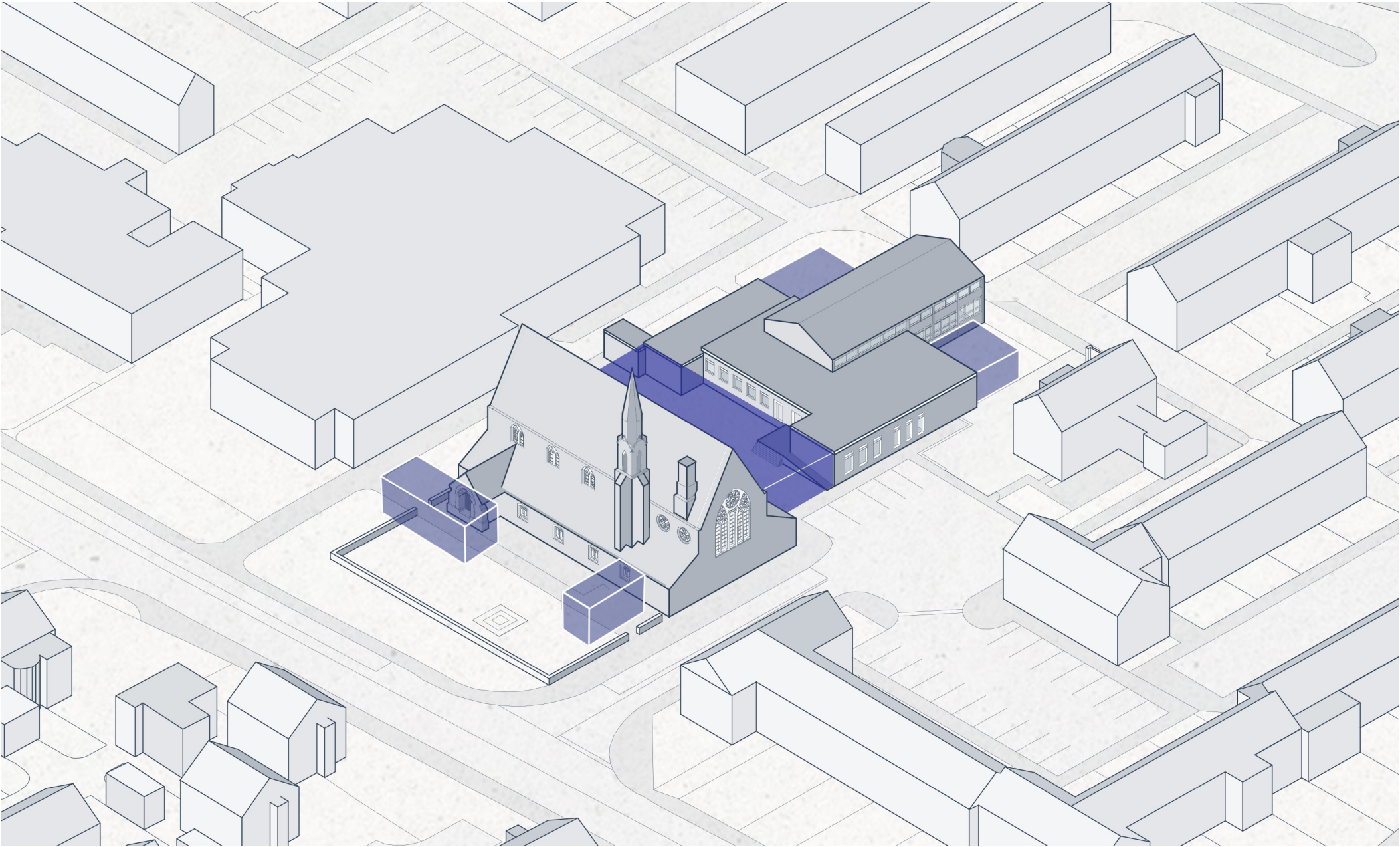


WEST FRAGMENT SECTION TO DISPLAY THE USE OF THE DESIGN DETAILS INCLUDED

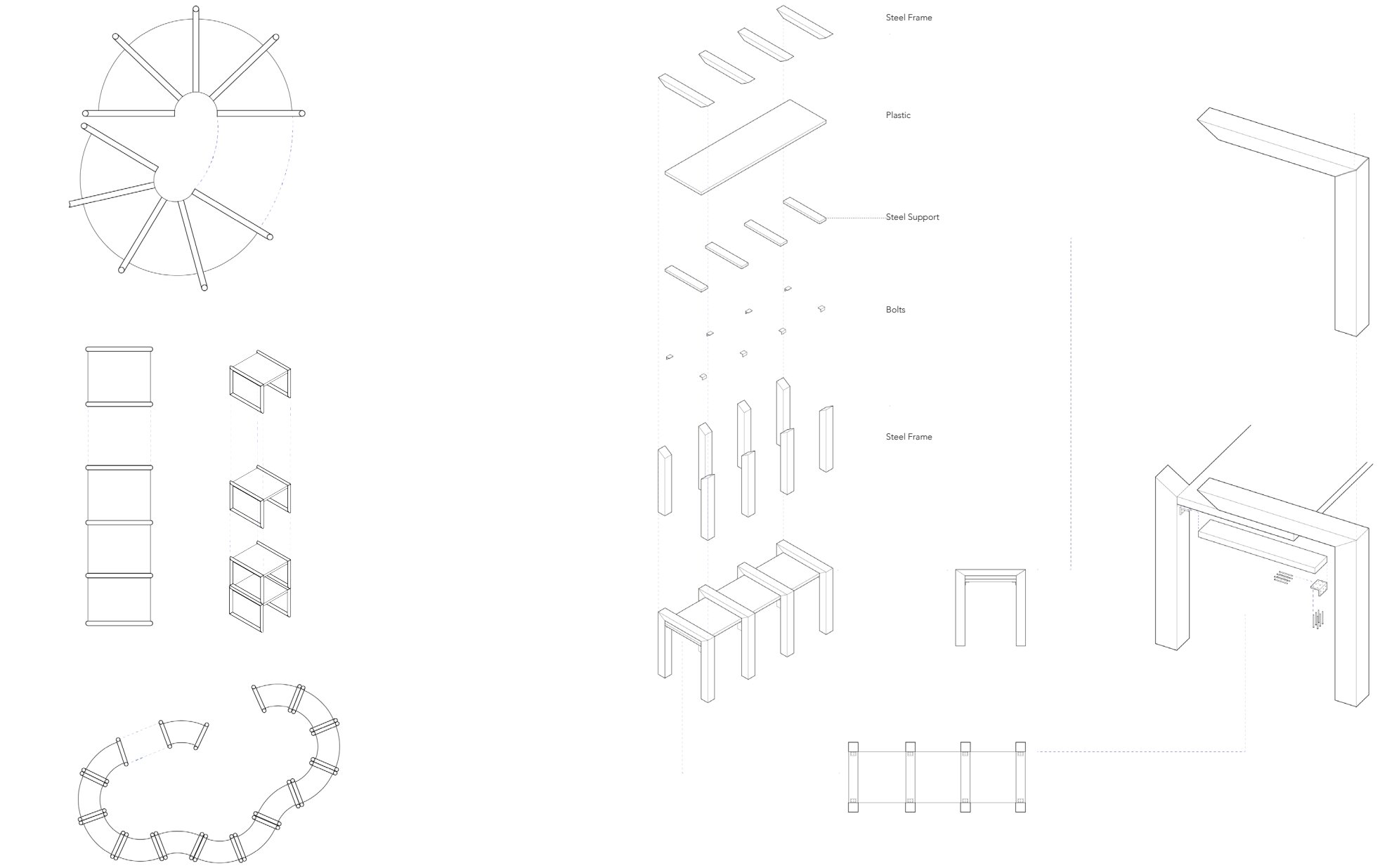
DESIGN DEVELOPMENT



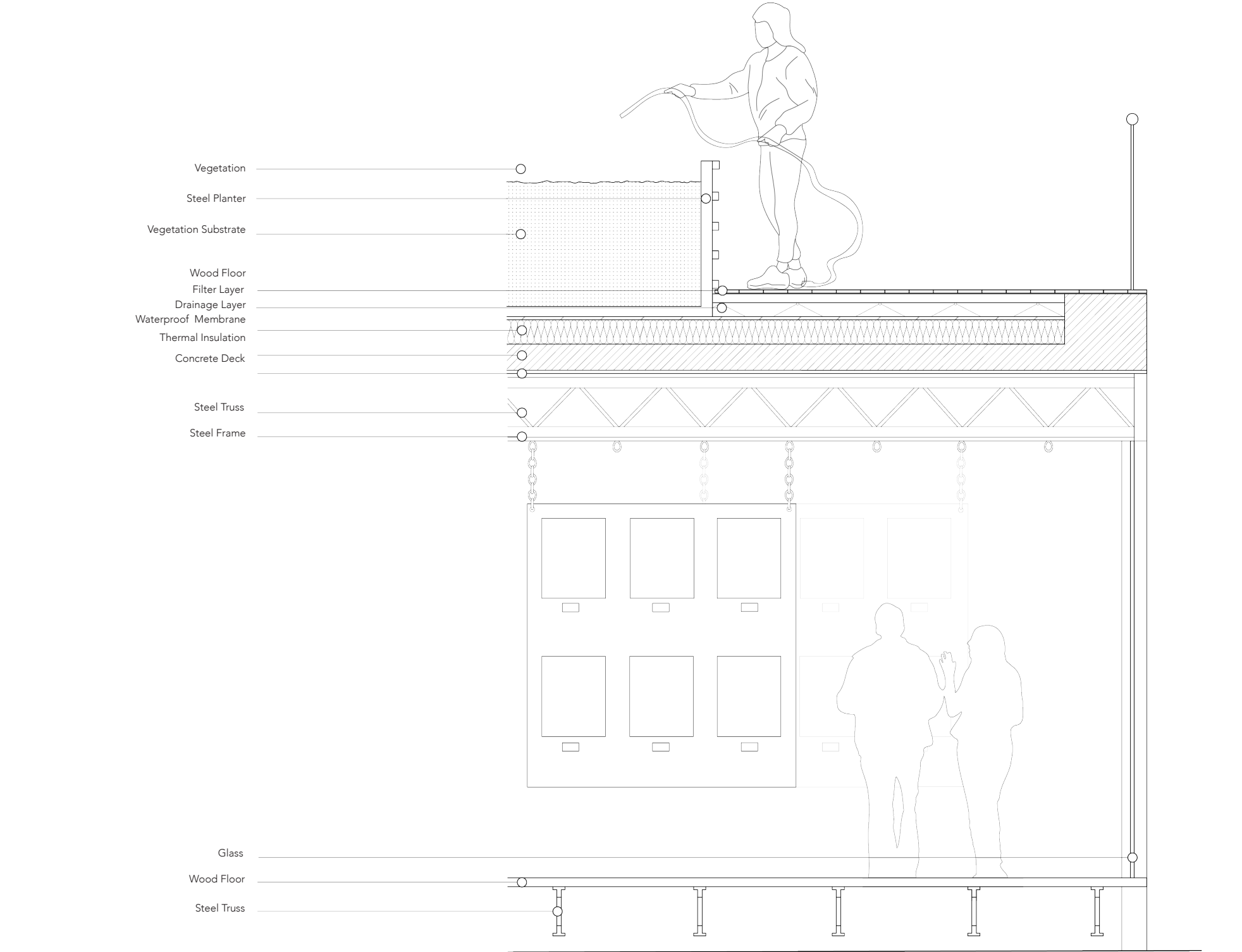
EXPLODED AXONOMETRIC OF THE DEMOLITION AND CONSTRUCTION PLAN



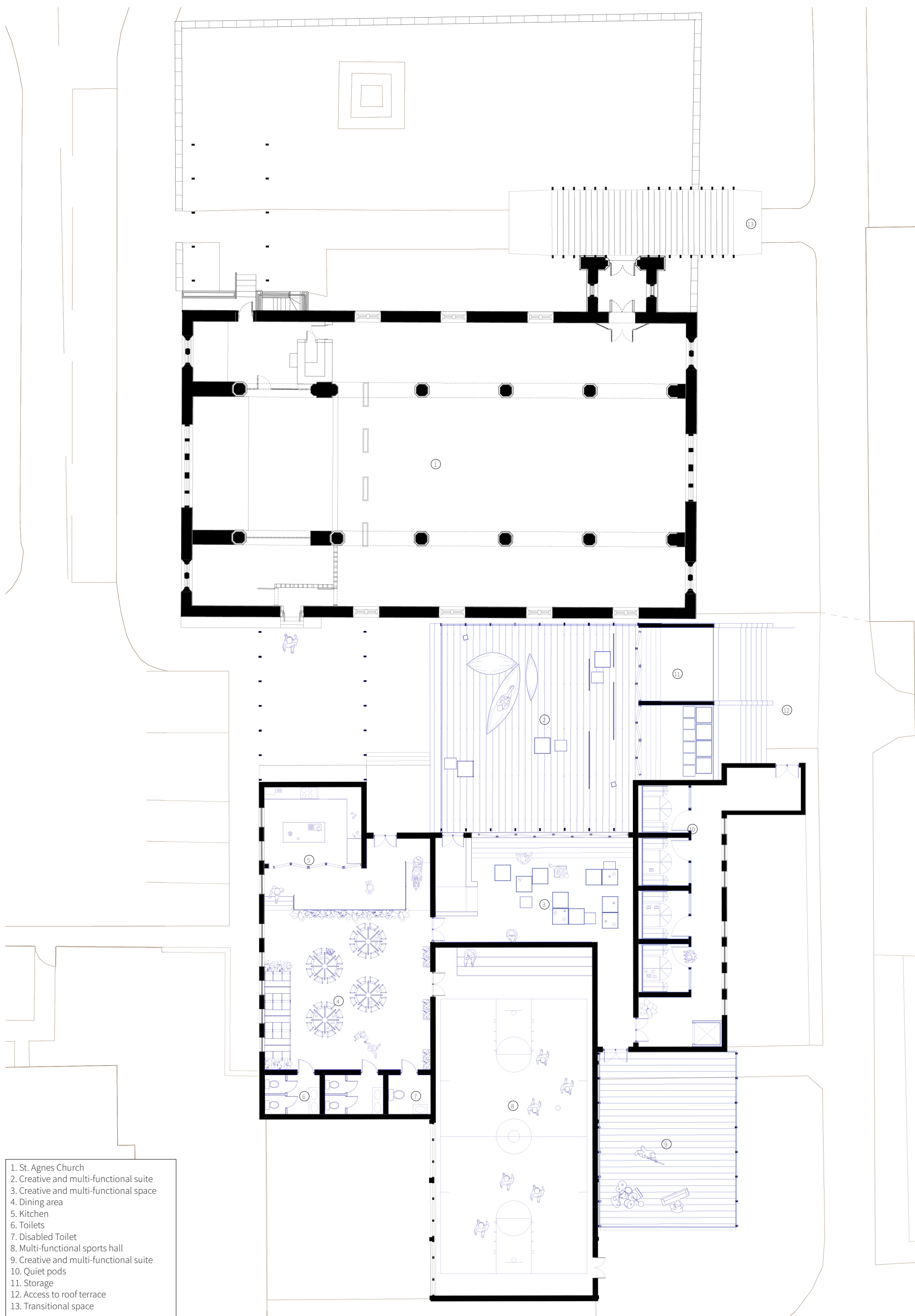
1:500 AXONOMETRIC OF EXISTING CHURCH AND COMMUNITY HALL HIGHLIGHTING THE INITIAL FRAGMENTS OF THE SITE FOR DEVELOPMENT



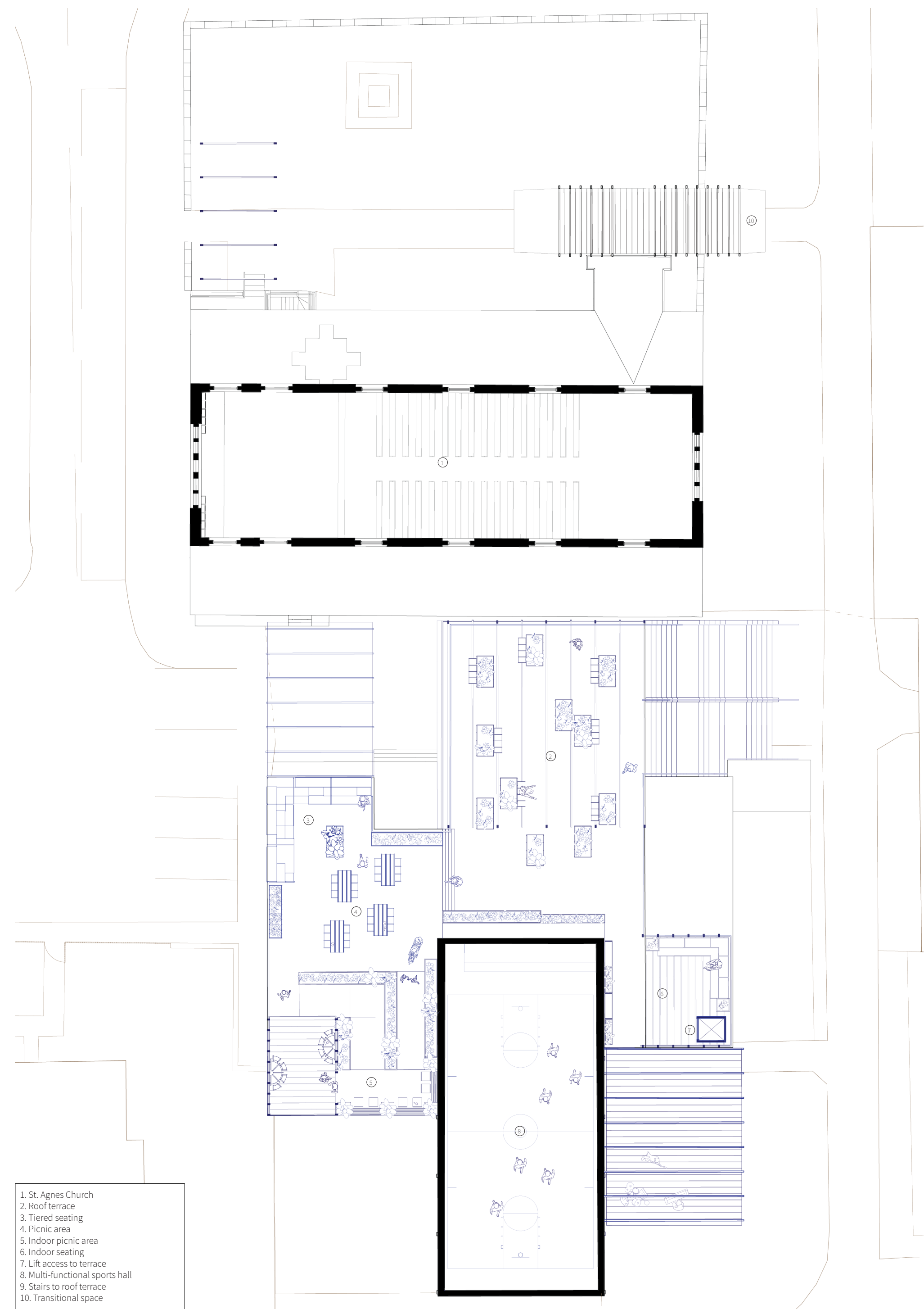
FURNITURE DESIGNED FOR MULTIPLE PURPOSE FUNCTION



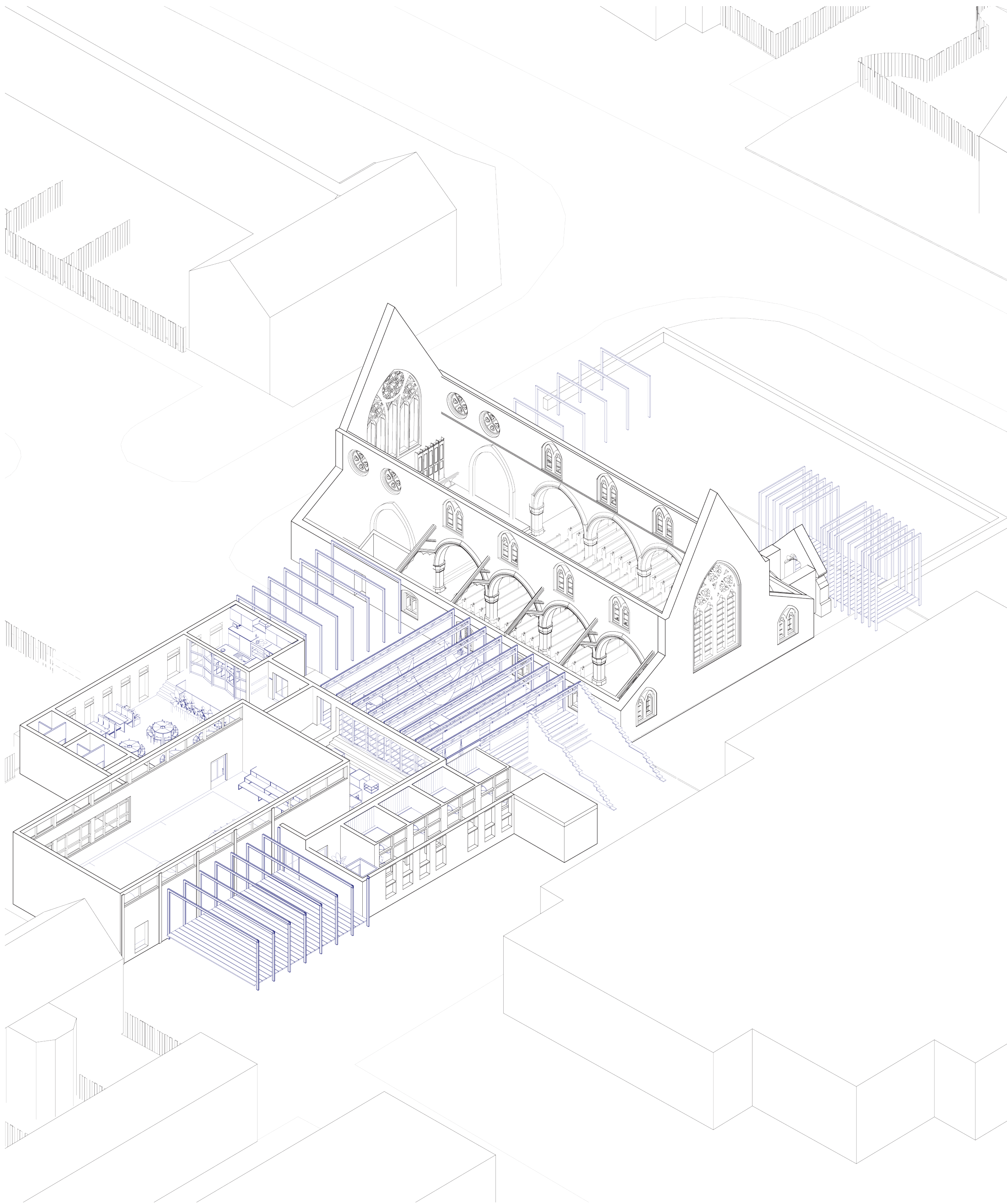
DETAILED SECTIONAL TO DISPLAY CONSTRUCTION OF ROOF TERRACE AND POTENTIAL FUNCTION FOR SPACE 2 ON PLAN AS AN ART GALLERY USING THE HOOK FEATURE ON CEILING



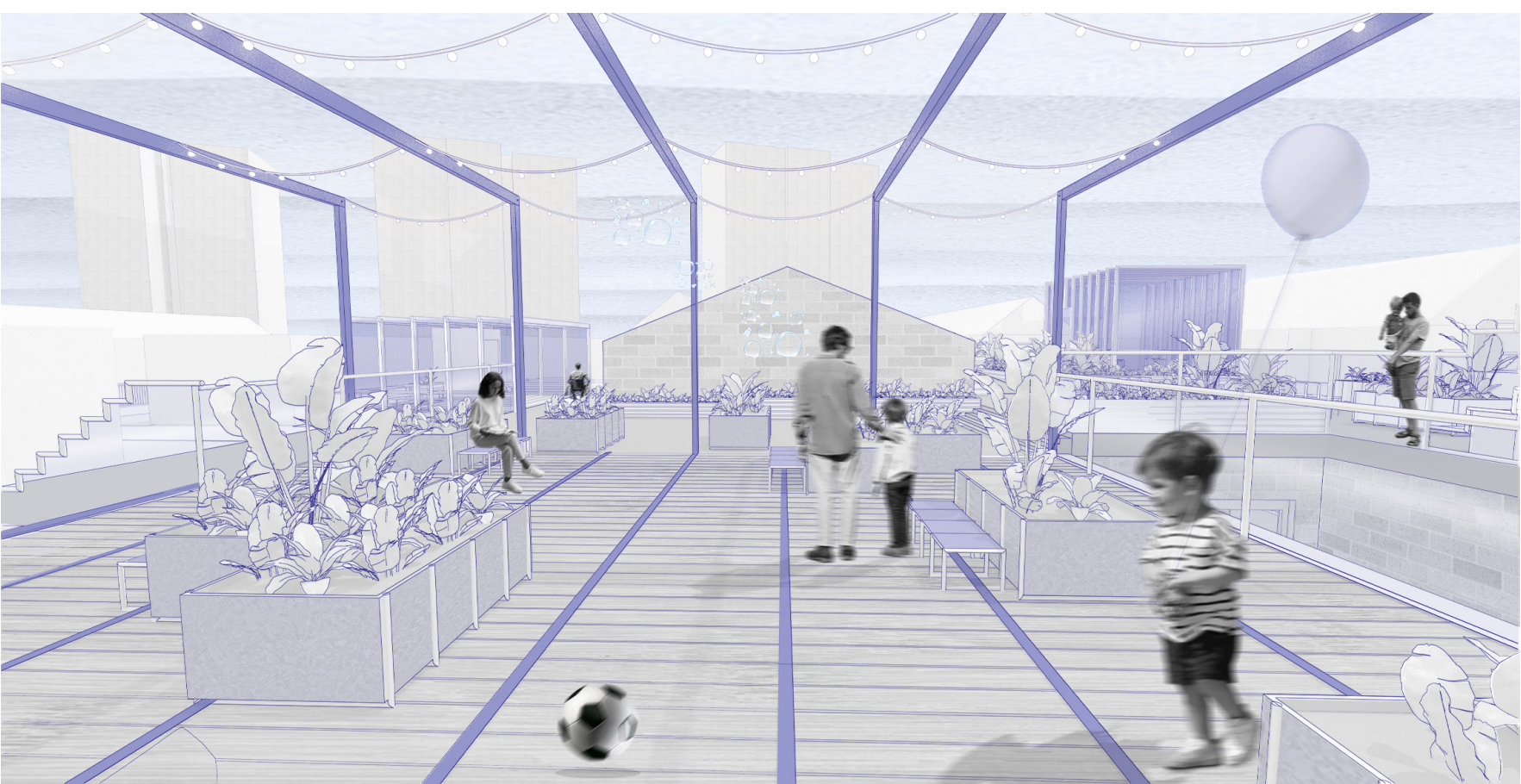
1:200 GROUND FLOOR PLAN OF CHURCH AND COMMUNITY HALL



1:200 ROOF FLOOR PLAN OF CHURCH AND COMMUNITY HALL



1:200 AXONOMETRIC OF DESIGN TO SHOW STRUCTURE AND INTERIOR



ATMOSPHERIC DRAWING OF ROOF TERRACE (not to scale)



ATMOSPHERIC DRAWING OF MULTI-PURPOSE CREATIVE SUITE (not to scale)



ATMOSPHERIC DRAWING OF DINING SPACE (not to scale)