

## A Logical Family Home

In a contemporary and ever-evolving society, families and other social networks look substantially different to the more traditional biological family unit.

The concept of a family is no longer confined to geniality and blood relation. Modern familial units can be constructed through both romantic and platonic relationships as long as the core values are shared among members.

Author and activist Armistead Maupin describes this chosen family as the 'logical family' due to its purposefully created nature as opposed to its biological counterpart.

By designing an environment with adaptable residential co-living as well as a cultural centre, Tetley will provide the backdrop for Leeds's logical families to form and flourish.

At the centre of this scheme and the concept of a logical family is creating a safe space.

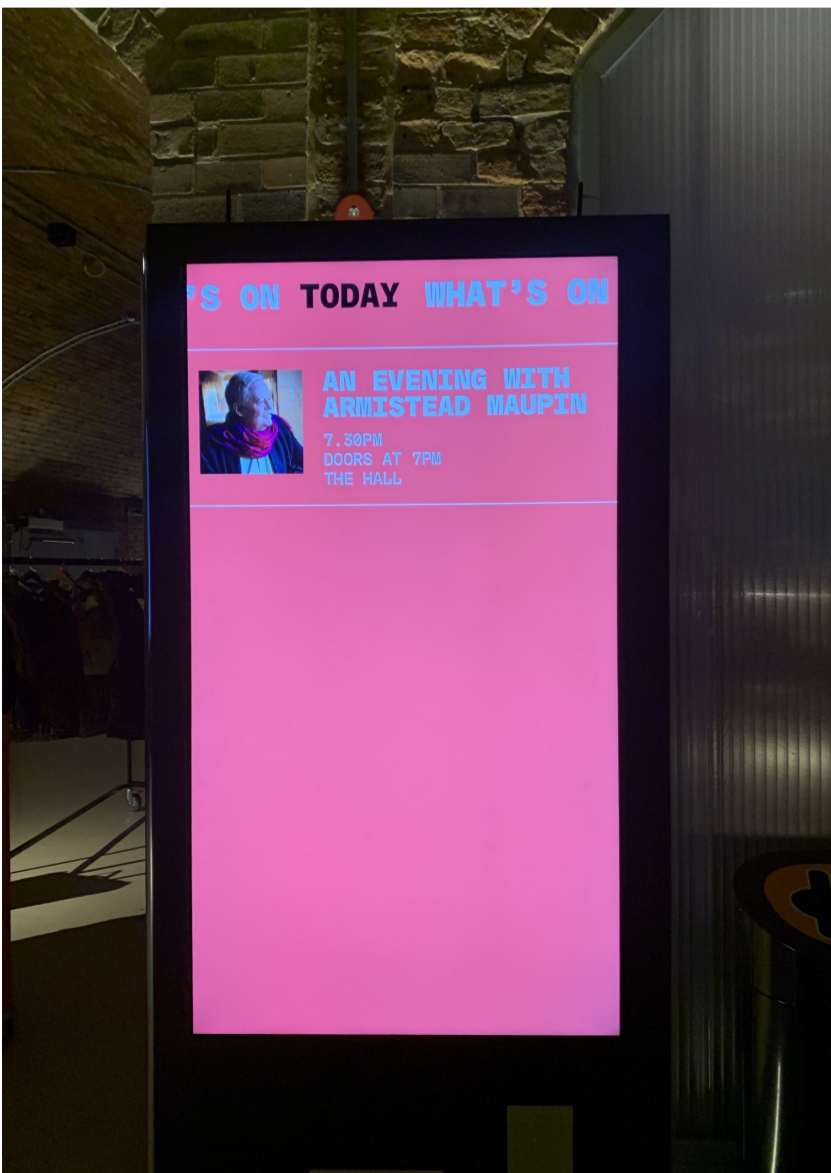
This document will describe the crucial spaces within the logical family project that create the backdrop for forming relationships.

Theatre space

Artist residencies

Library & Archive

Urban Community Garden

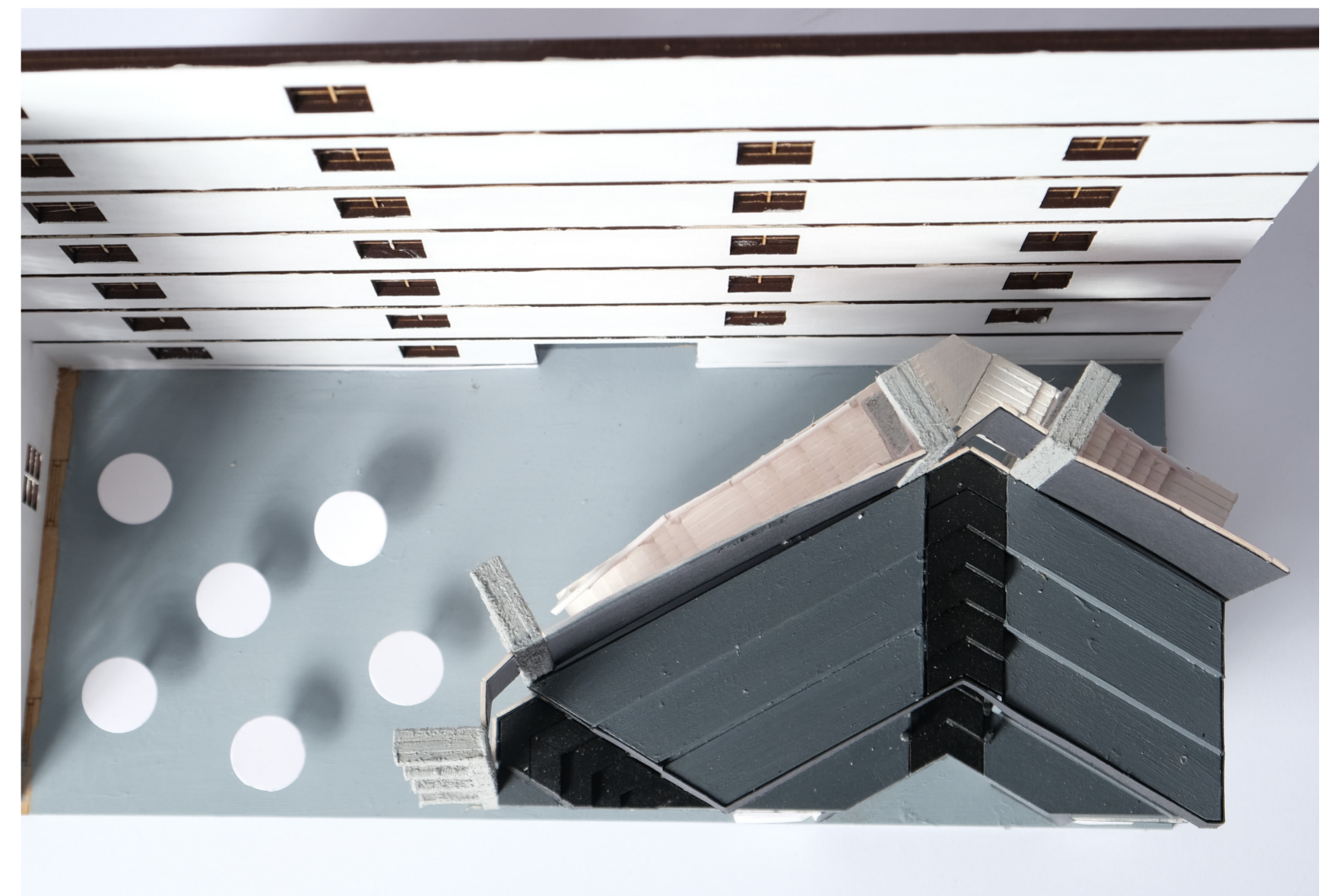
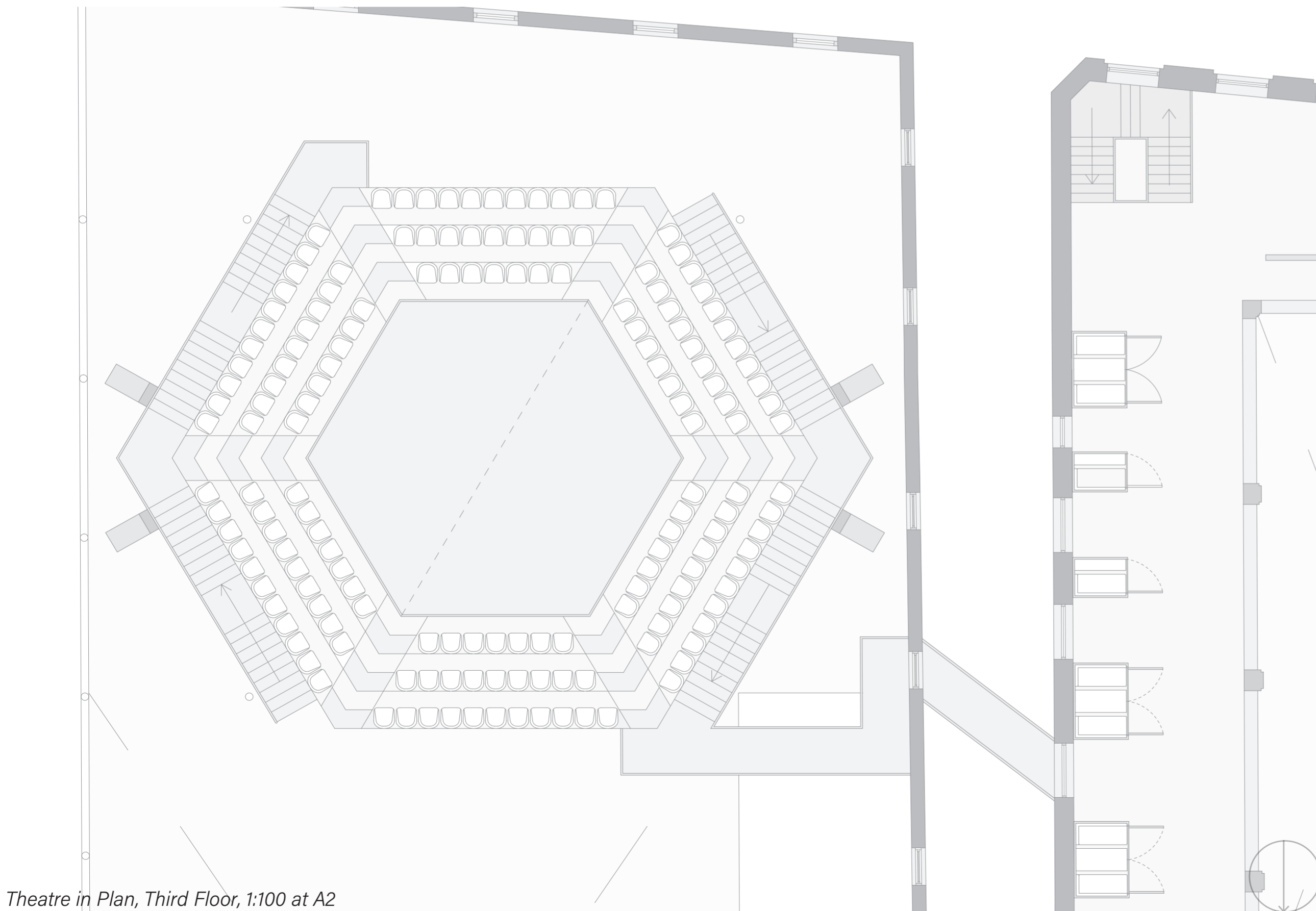
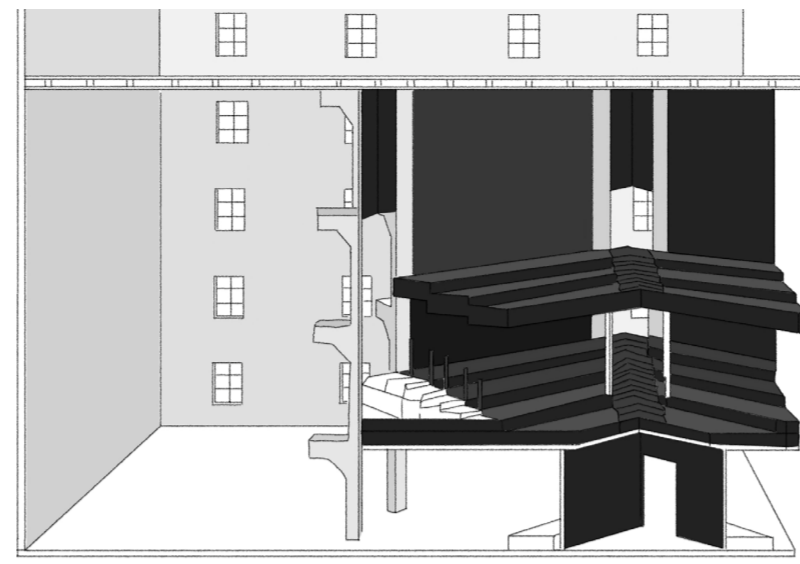
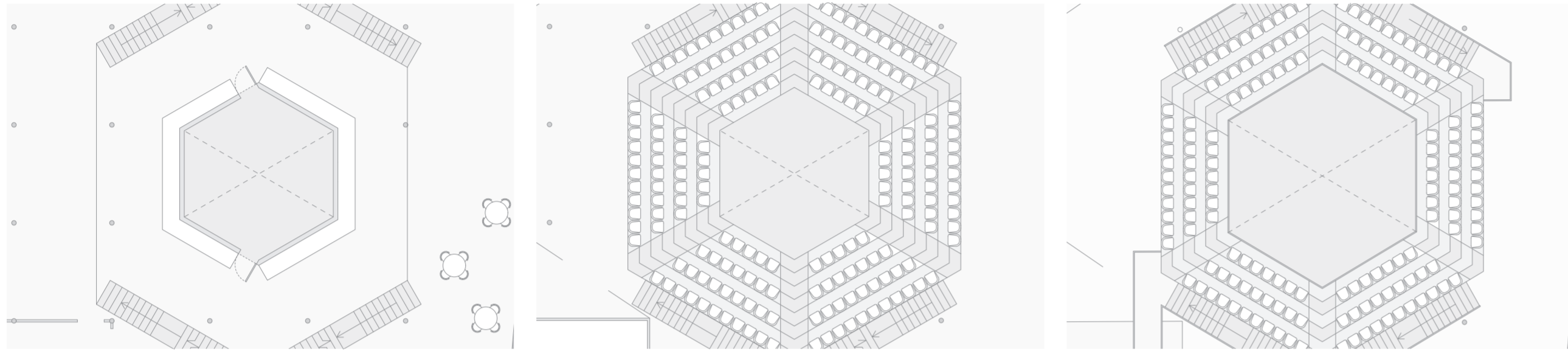




# A Platform for Change

Theatre & Performance Space

Theatre in Plan, Ground, First and Second Floor, 1:200 at A2

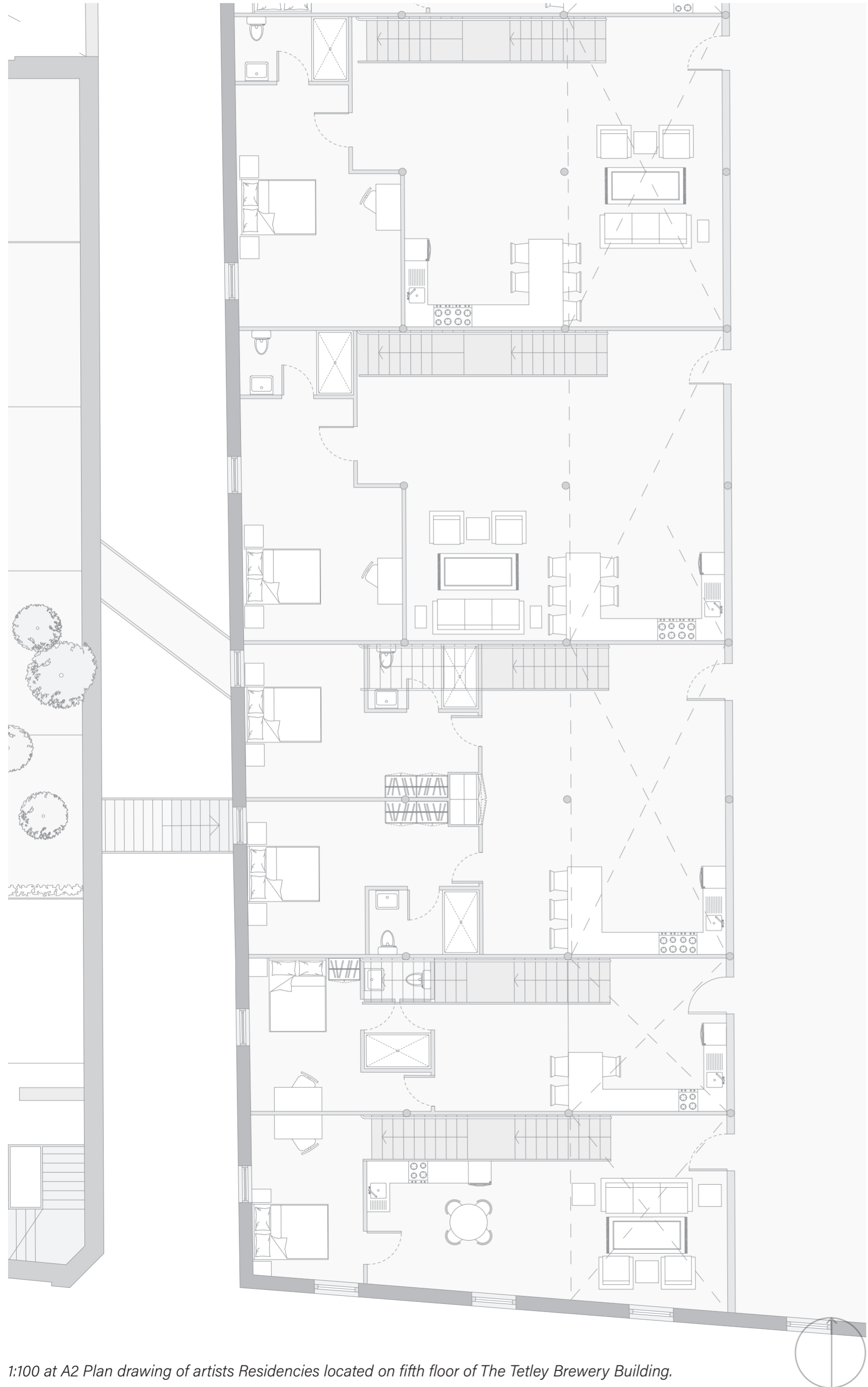


Theatre in Plan, Third Floor, 1:100 at A2



# Artists Residencies

A Home for Culture



1:100 at A2 Plan drawing of artists Residencies located on fifth floor of The Tetley Brewery Building.



# For Leeds By Leeds

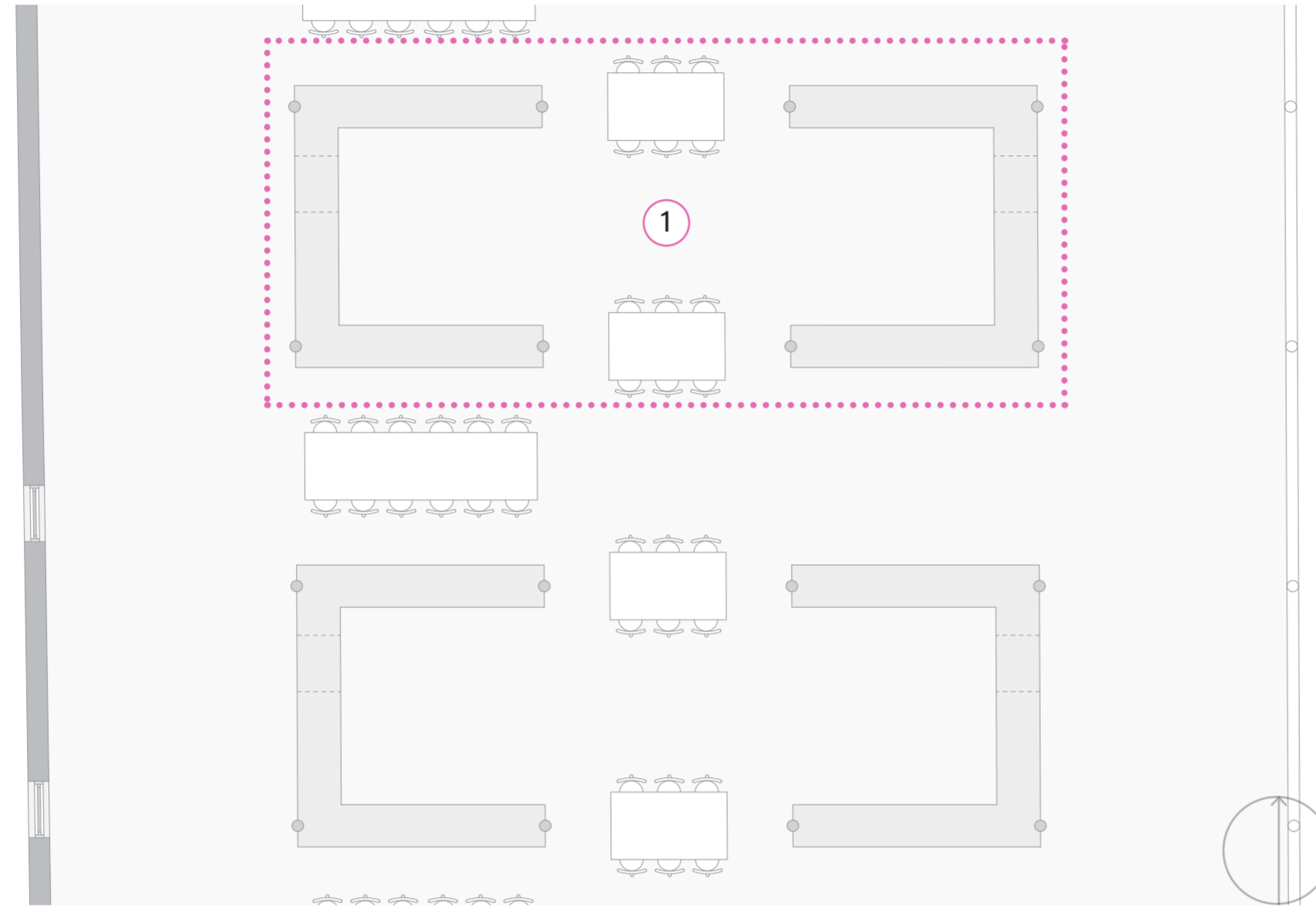
## Library & Archive

This publicly accessed and curated library & archive will provide a greater insight into the lived experiences of the people & city of Leeds.

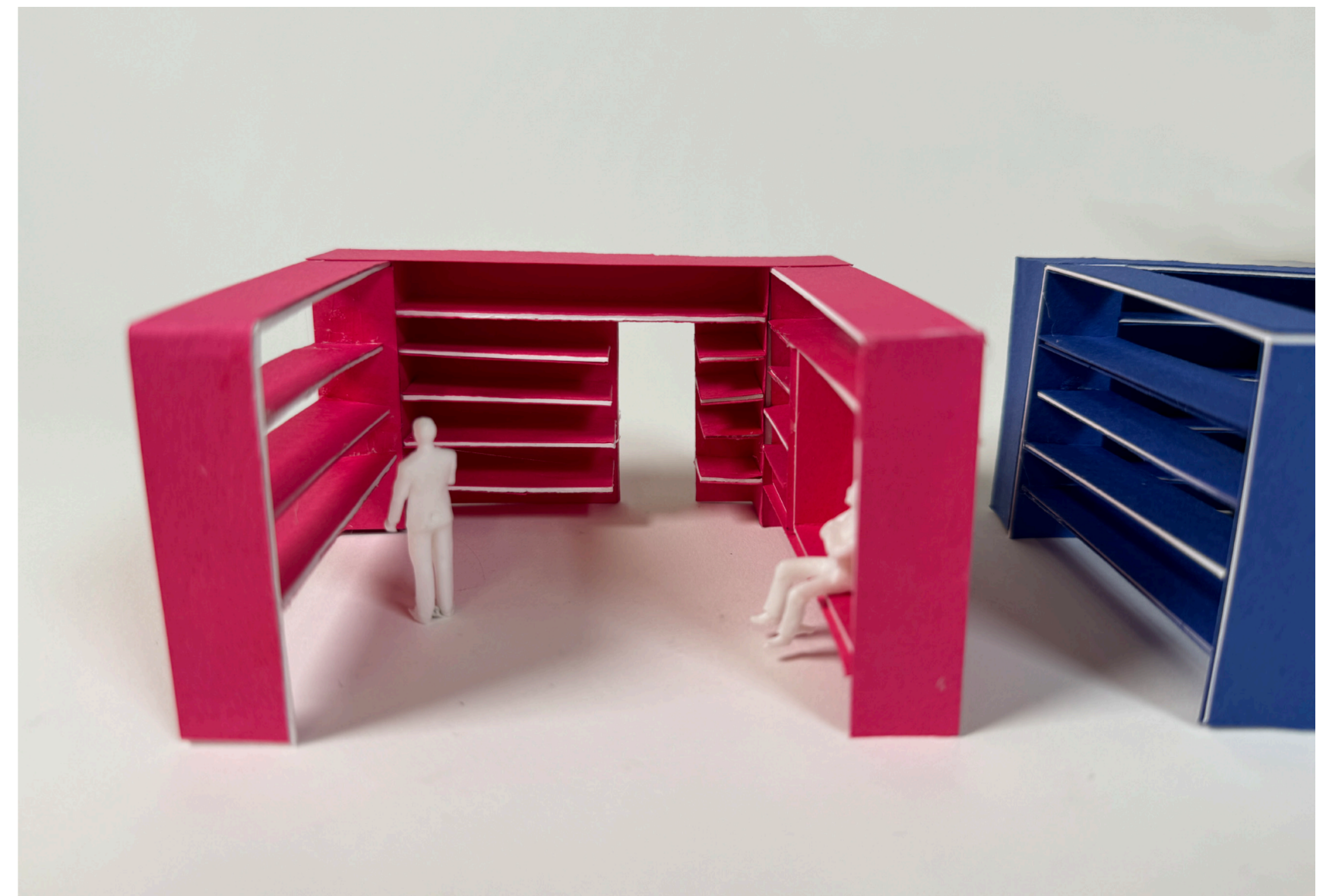
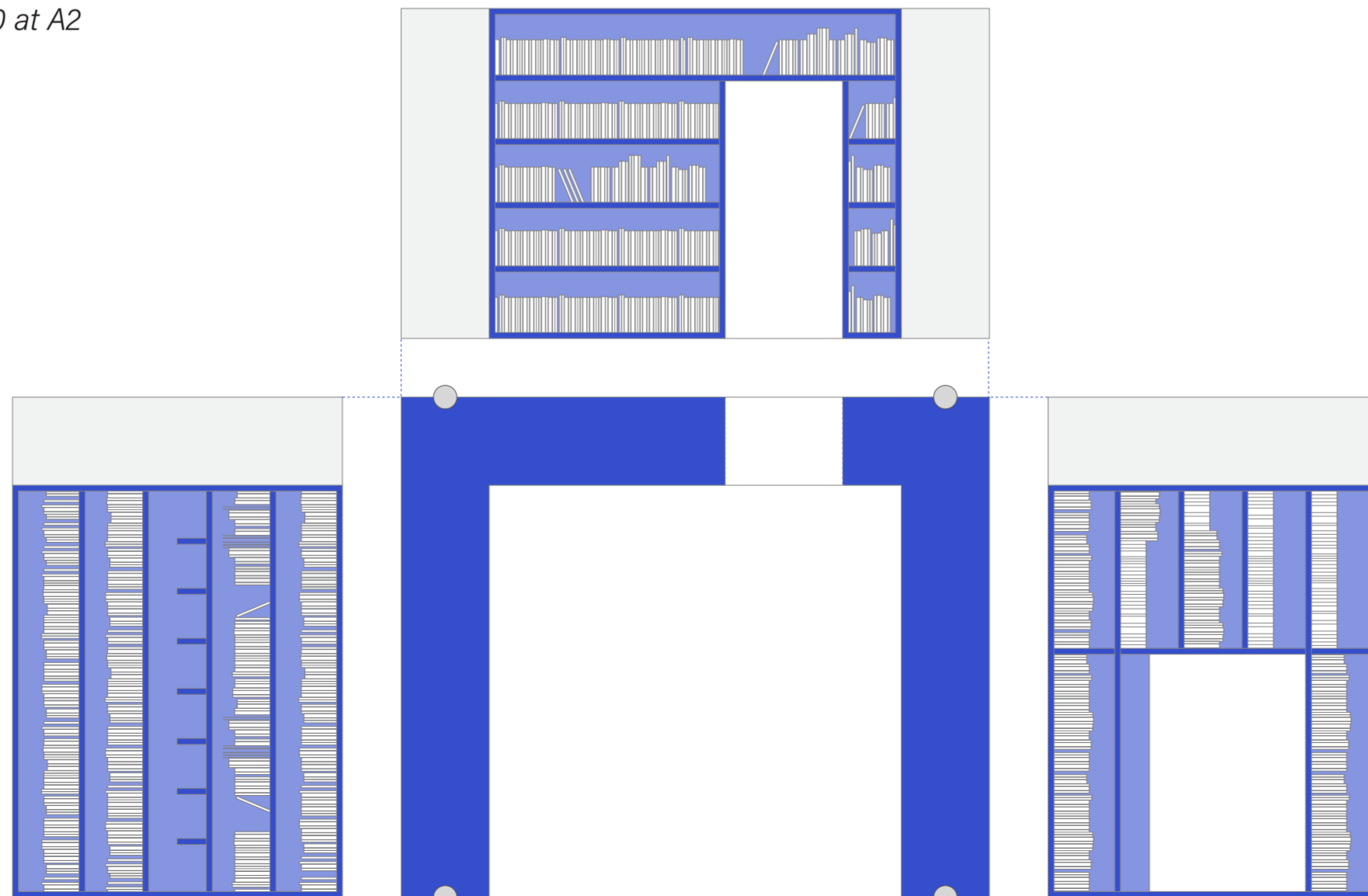
From fiction written by authors & creatives based in the city & broader West Yorkshire region to anecdotes and memoirs, the library will cover all bases with a focus on the perspectives of those who have previously been overlooked.

Communities will each have their own unit comprising bookcases & displays to exhibit their chosen content. The sections will be able to adapt & expand across the wider floor as more communities come forward with their stories. No1 below shows a sample selection.

Library in Plan, Forth Floor, 1:100 at A2



Library area in net drawing, Forth Floor, 1:200 at A2





# Growing a Community

## Urban Community Garden

### Sponsor: Thackray Museum of Medicine

This urban Garden scheme based in the city of Leeds would pursue partnerships with local organisations, charities and cultural centres.

Potential investing partners would include museums such as the local Thackray Museum of Medicine. The museum states that its ethos aims to inspire new ways of thinking

through social activities and creativity, therefore making it an ideal partner in this scheme.

### Location of Plot:

The rooftop space and wider building could be used by the sponsor organisations for internal and or external events. Potential partner plot located in plan below.



Peonies *Paeonia*

Roots of this plant would have been used for many different treatments but mainly for children with epilepsy.



Foxglove *Digitalis purpurea*

Although this plant is poisonous the chemicals derived from it can create the drug digoxin which can help in heart treatments.



Lemon Balm *Melissa officinalis*

Used to help with stress and anxiety since the days of ancient Greece. the plants fragrant scent is also associated with it's calming properties.

