

# Work, In Progress

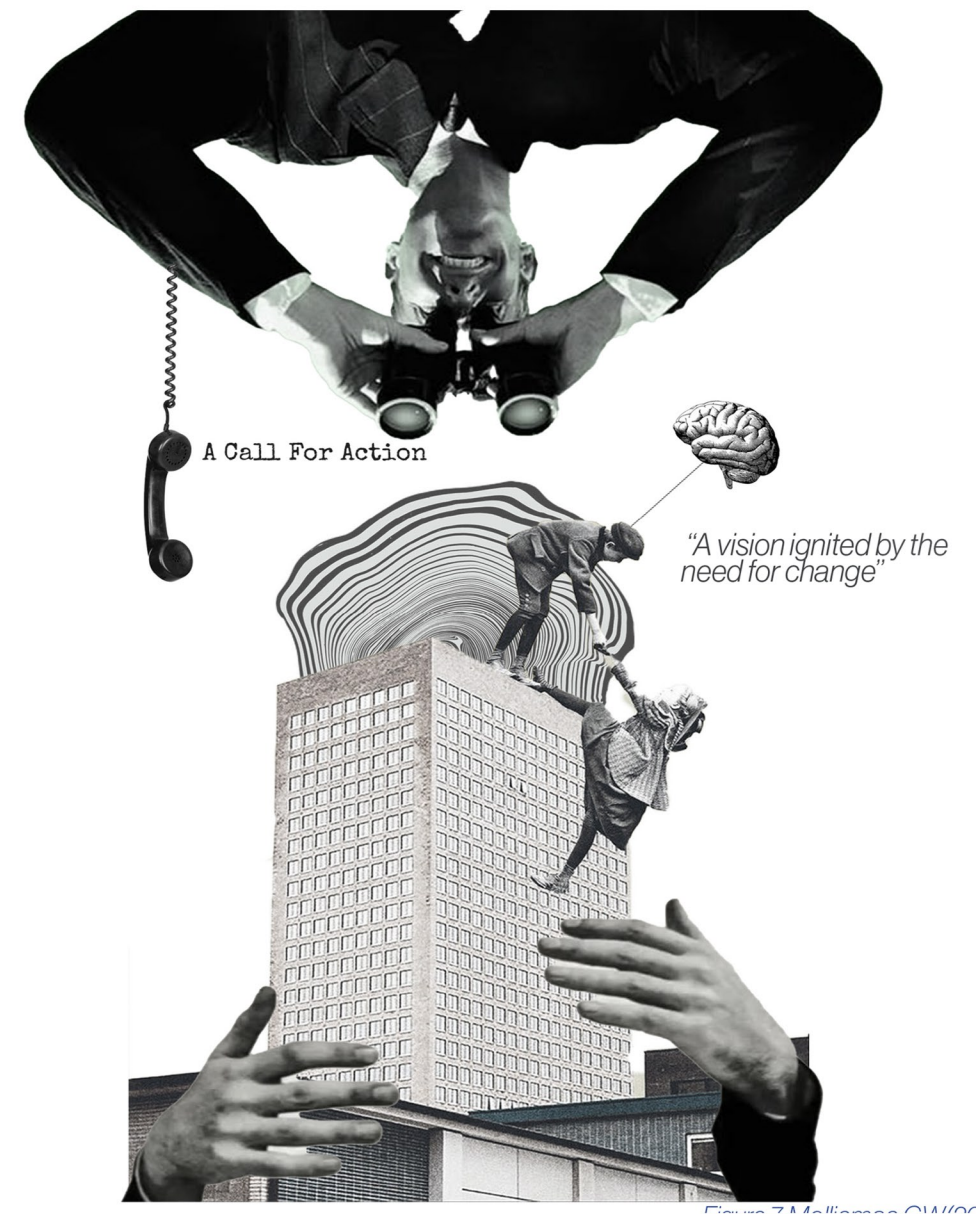
By Mollie Mae Grant-West 21116803

Work, In Progress proposes radical changes to transform a system that has failed the people it was meant to support. It confronts real, pressing socio-economic issues tied to the alarmingly high unemployment rates in the UK. But let's pause for a moment and ask: Why are unemployment rates so high? What is currently being done to address this? What systems are in place—and why are they no longer serving a society in need?

This is where Work, In Progress steps in. It's a vision ignited by the need for change—a platform designed to empower the working public. Whether you're looking to shift your career path but don't know where to start, a graduate facing the daunting climb into employment, or simply someone eager to up skill for a promotion, Work, In Progress is here to support the past, present and future of employment.

Driven by the Modernist Movement, the project draws inspiration from some of the most influential De Stijl design principles, such as primary colours, geometric form, balance and simplicity, creating an autonomous response to the building's original brutalist features.

It tears down the bureaucratic barriers and cuts through the red tape. It's about accessibility, adaptability, and action—putting people before Processes and futures before forms.





# CREATIVE DEVELOPMENT

## Explorative Model Making

The initial concept models have been inspired by David Unemento. While originally drawn to his connection with brutalism and concrete structures, the focus gradually shifted toward his exploration of form- particularly the interplay between solid and void. Becoming intrigued by the idea of “spaces within spaces” embracing the ambiguity of the unknown. This exploration moves beyond surface materiality to consider how form can create layered, hidden and unfolding environments- moments of discovery.



Figure 20: Molliemae GW(2025)

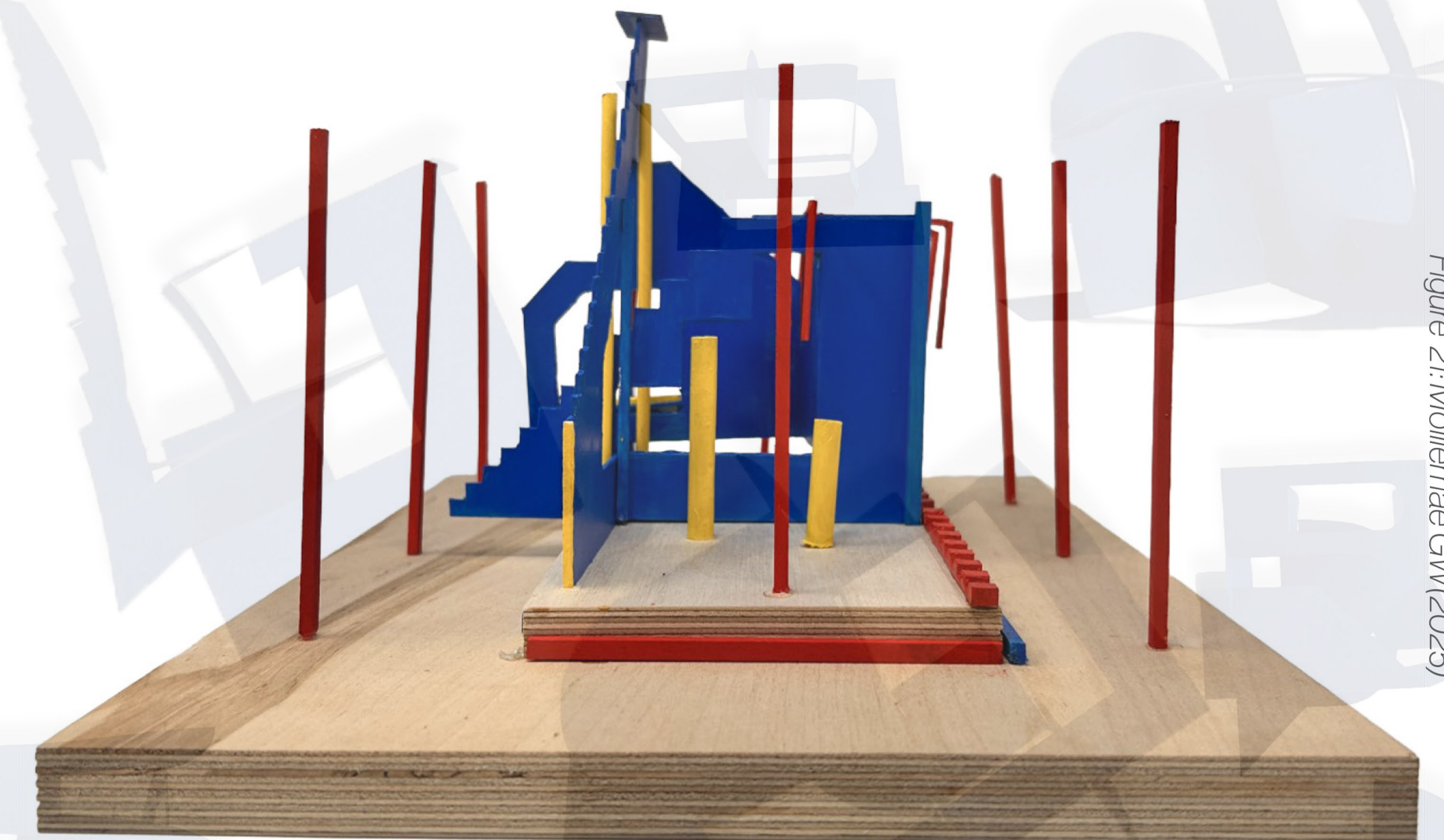
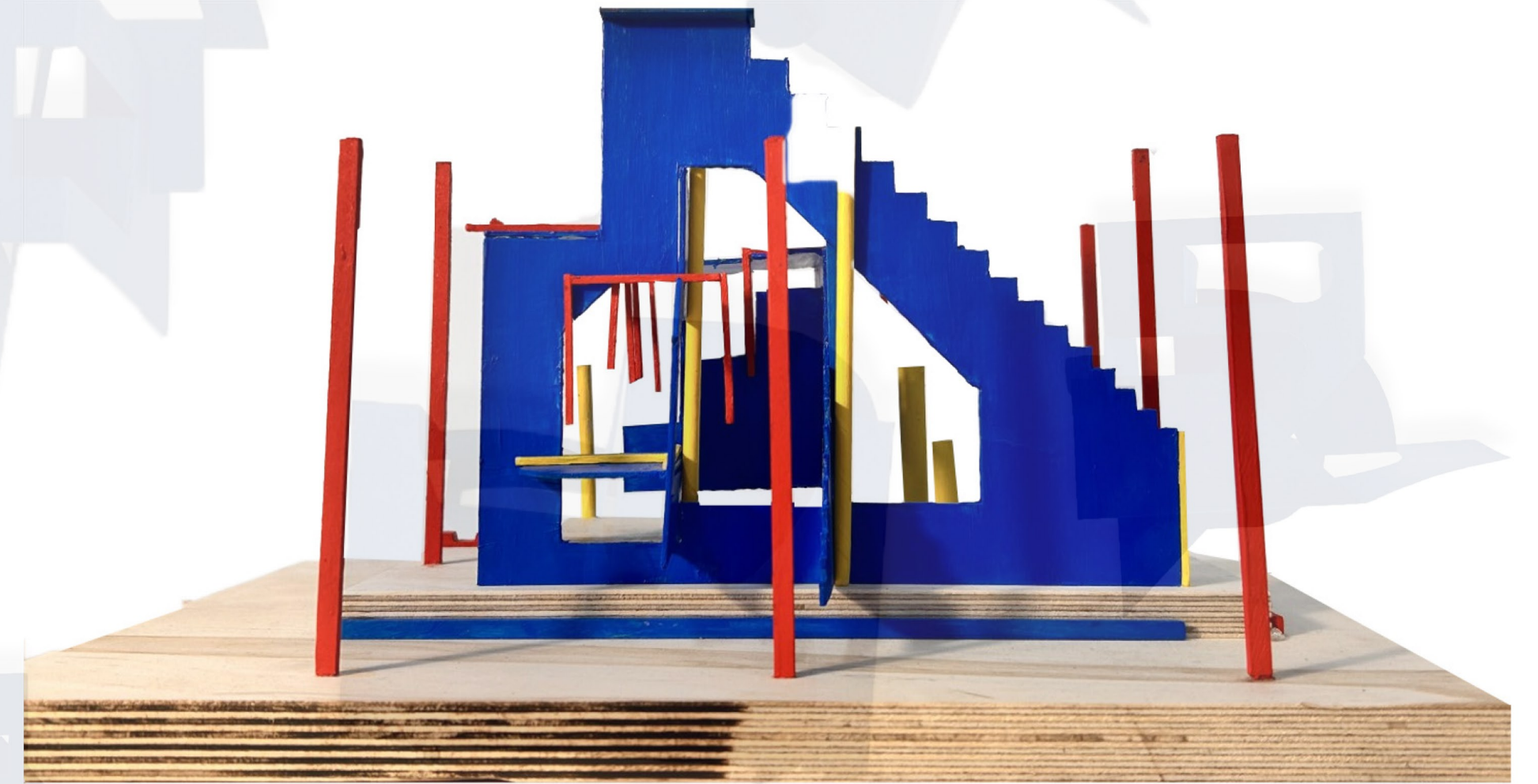
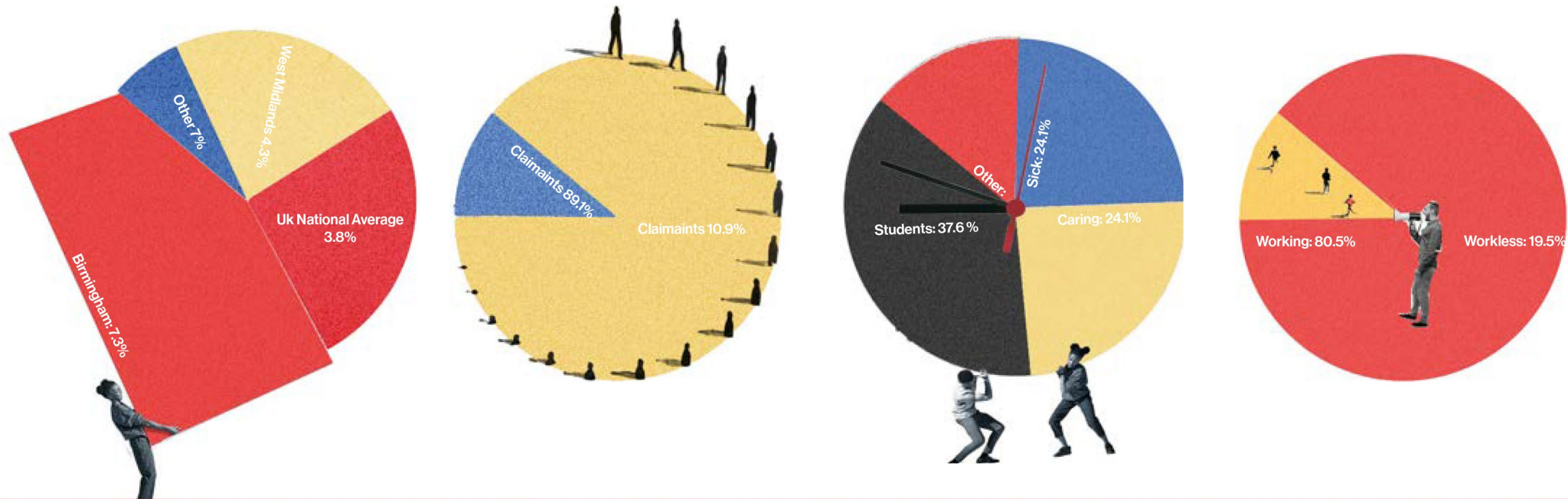
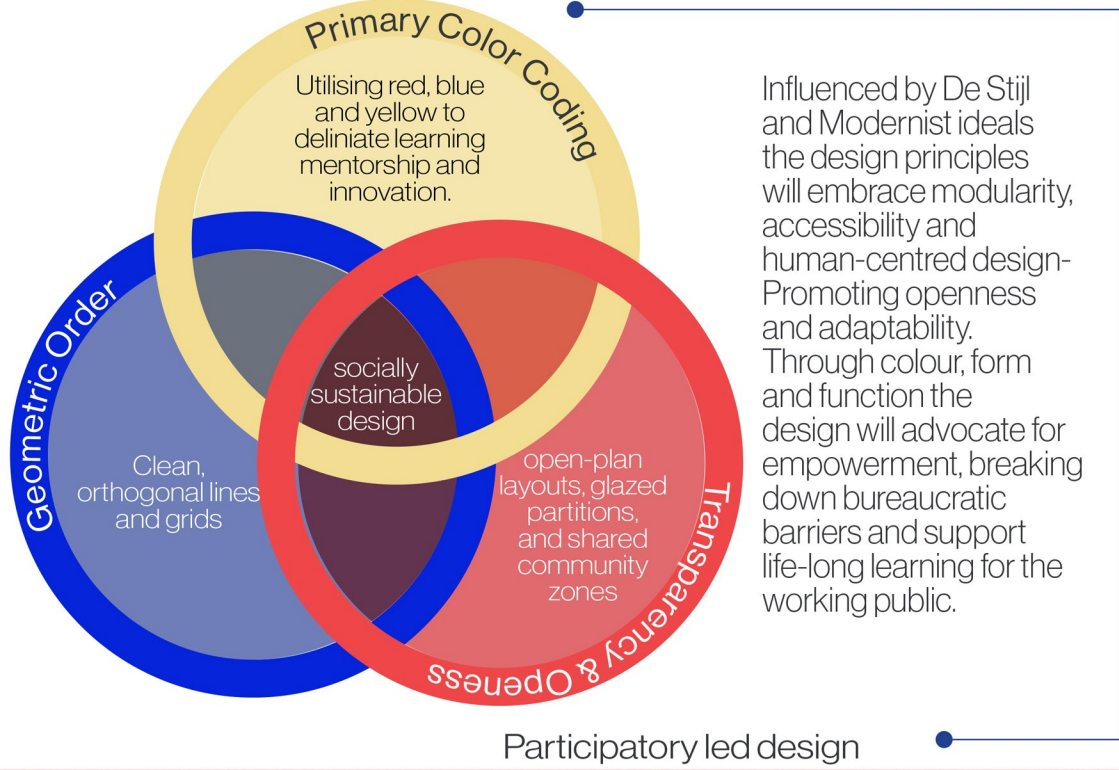


Figure 21: Molliemae GW(2025)

### Progressive Concept Model:

To aid further development one model was selected for refinement. While the initial model explored the relationship between solid and void, this iteration introduced primary colours as a key element. The use of bold, playful hues intends to transform a traditionally dull and bureaucratic system into a vibrant and engaging environment. The colour has and will be used not just decoratively but spatially to guide movement and spark curiosity. The model continues to explore the role of solid and void, while thoughtfully responding to the existing structure, re-imagining the future of employment through dynamic and uplifting spatial language.





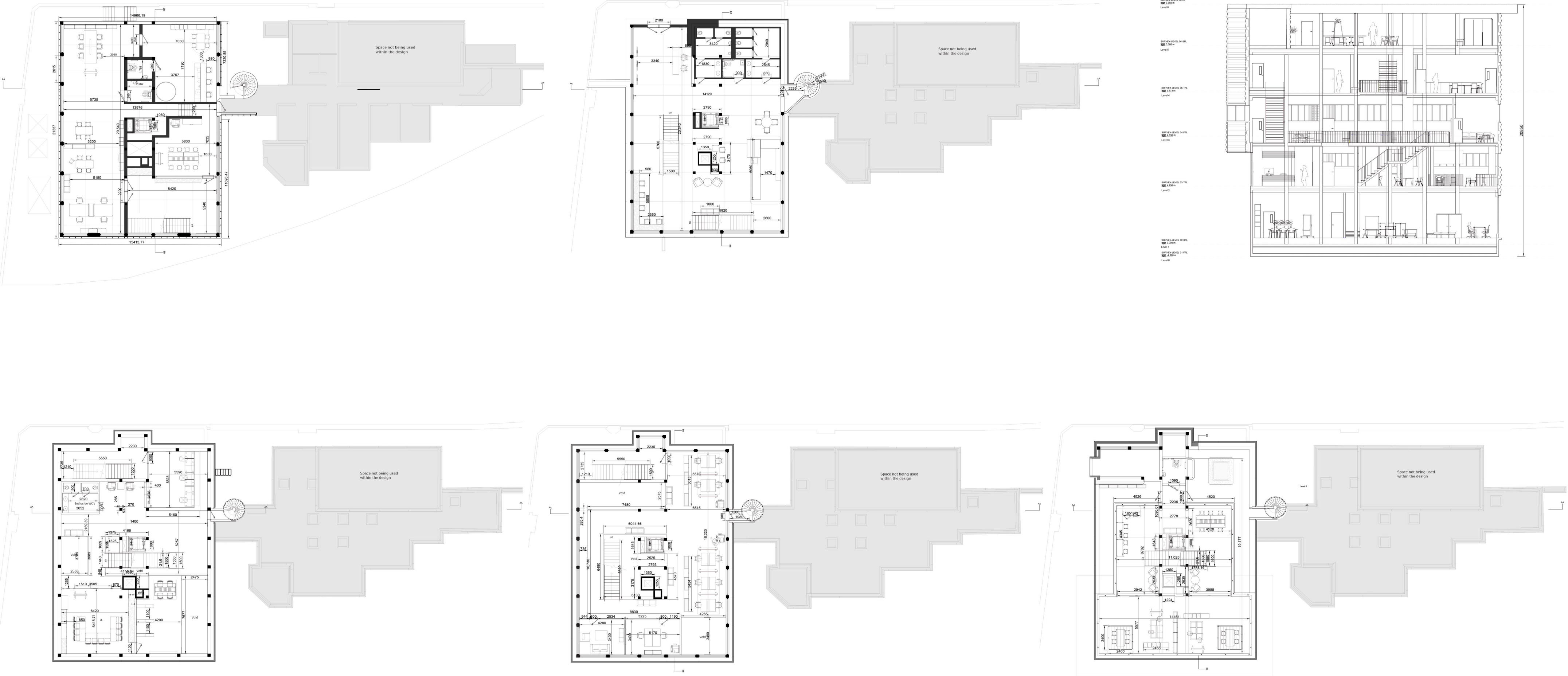
**Informed Research**

“Around **212,000** people or **28.3%** of the population aged 16 to 64 years in Birmingham were **“economically inactive”** in the year of December 2023.

(Birmingham's employment, unemployment and economic inactivity - ONS, 2024)

## Communicating The Technical Design Scheme

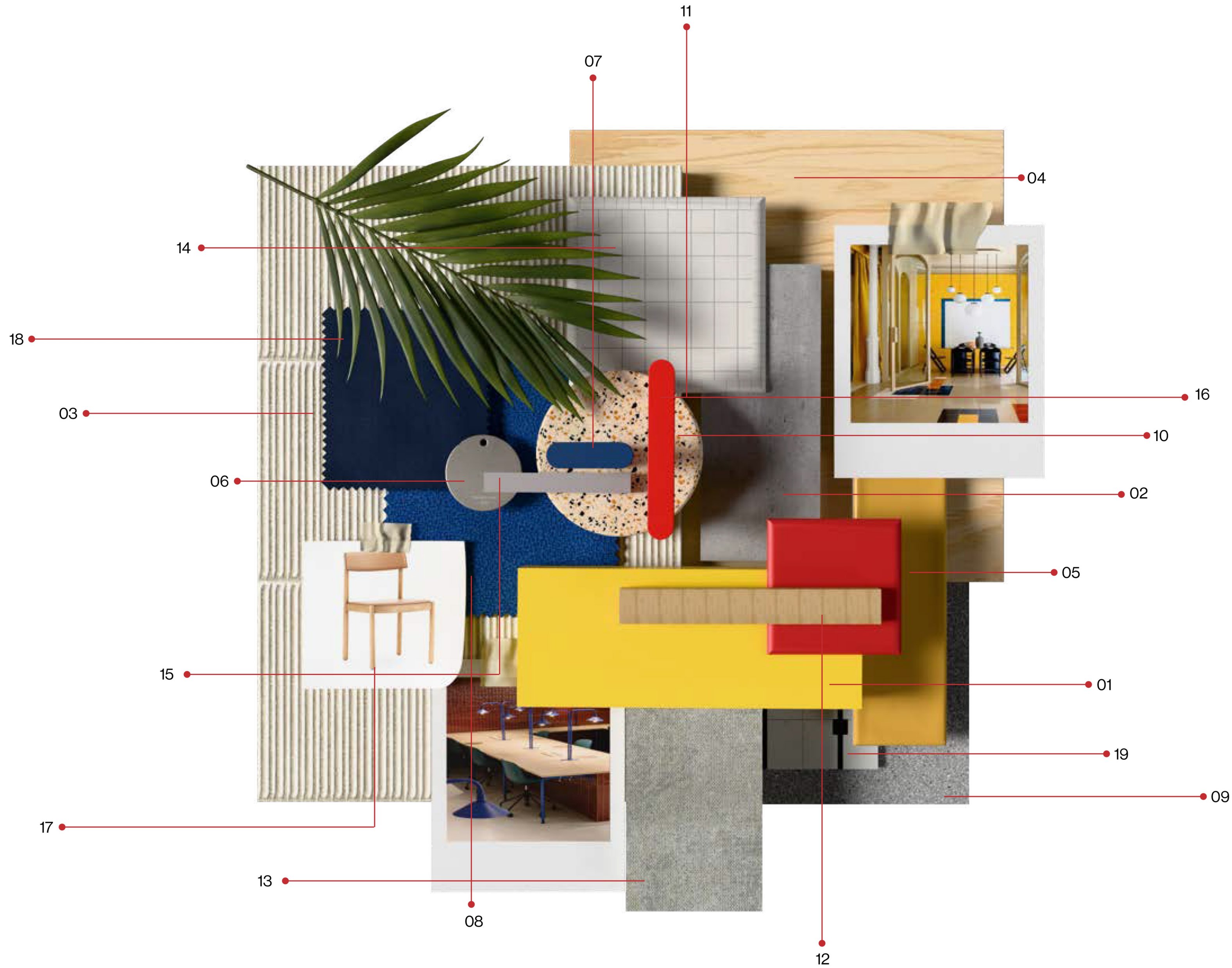
Below displays the five floor plans at scale 1:200, alongside section AA Scale 1:100. These drawings have been designed in accordance with Birmingham City University.





MATERIALS KEY:

19:PRODUCT  
Jeffrey Court - Park Place - Time  
Square Brooklyn Marquina  
Brand- Jeffrey Court





# + COMMUNICATION

Isometric: Alternative Floors explained |  
Design Scheme

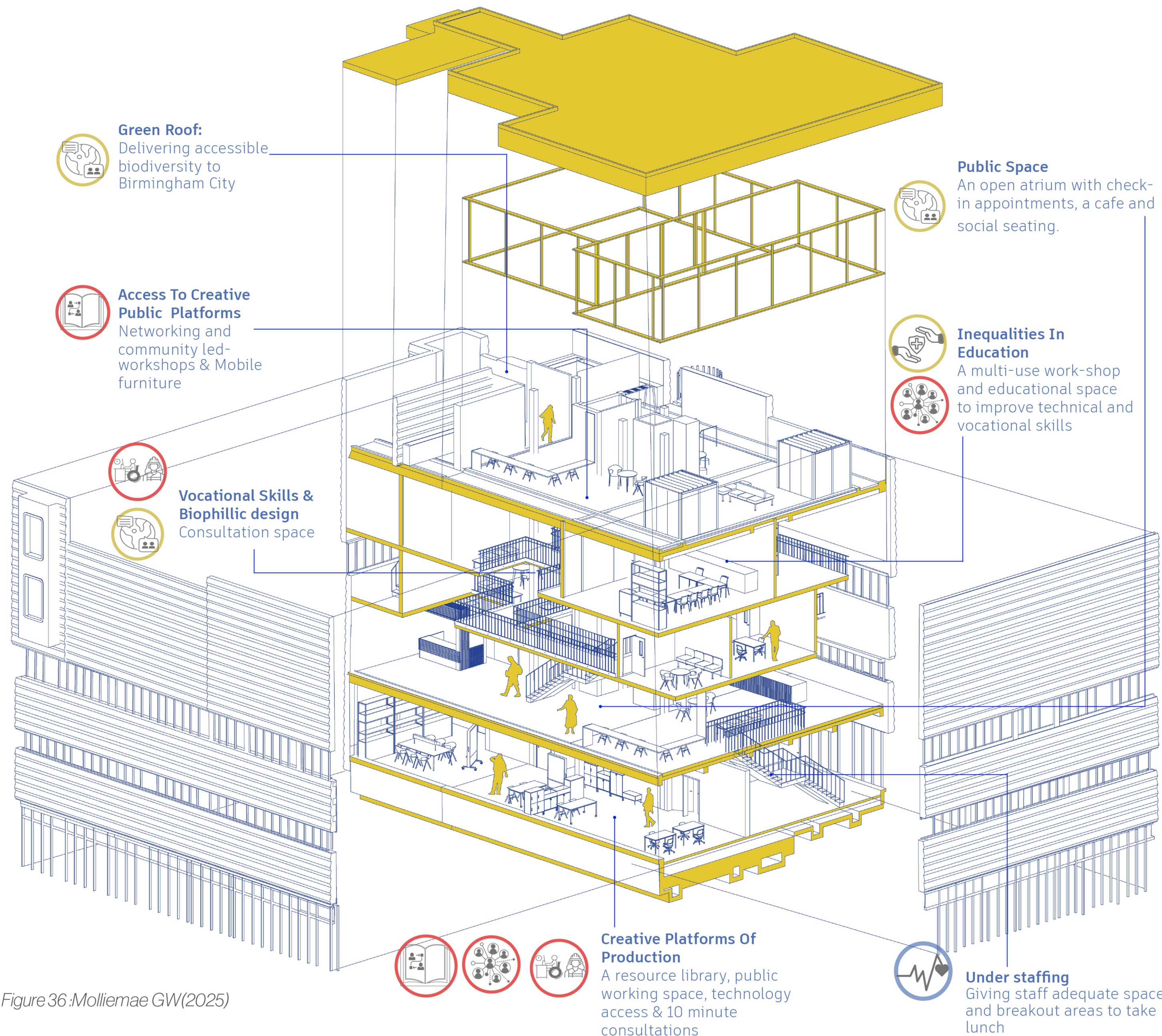


Figure 36: Molliemae GW(2025)

## Addressing the SDG's

The project takes a unified approach to balancing Community, user, and environmental needs through addressing some of the key SDG's.

### Provide Access To Safe And Inclusive Green And Public Spaces

By 2030, provide universal access to safe, Inclusive and accessible, green and public spaces

### Work-Related Ill Health

#### Social Enterprise

There are around 10,500 social enterprises in the West Midlands, creating around 67,000 jobs for the region

### Inequalities In Access To Technology

Approximately 11.7 million people in the UK (22% of the population) lacked basic digital skills in 2023. This divide exacerbates inequalities in access to education, employment, and social services.

### Access To Creative Platforms of Production

The UK spends little on free/ accessible vocational skills and investment to increase adult skill levels. Between 2010-11 and 2015-16, the governments adult skills budget fell by 34%.

#### Target 4.4

By 2030, substantially increase the number of youth and adults who have relevant skills, including technical and vocational skills, for employment, decent jobs and entrepreneurship

### Inequalities In Education

Without additional measures by 2030 over 300 million students will lack basic numeracy and literacy skills.

### Under Staffing

The Department for Work and Pensions (DWP) is reportedly understaffed by 25%, exacerbating stress levels among employees.

### Stressed & Depressed

Approximately 42% of such claims are due to mental health issues, with individuals unemployed for over 12 weeks being 4 to 10 times more likely to suffer from depression and anxiety compared to the general working population.



Sustainable Cities & Communities

Quality Education

Health & Well-being