

How Will You Go Beyond The Grid?

Collaboration and interdisciplinary practice

The Predetermined

Georgia Whitham

Theory Theory

The BullYard, CV1 1LH



Grasps

Attack

Preserve

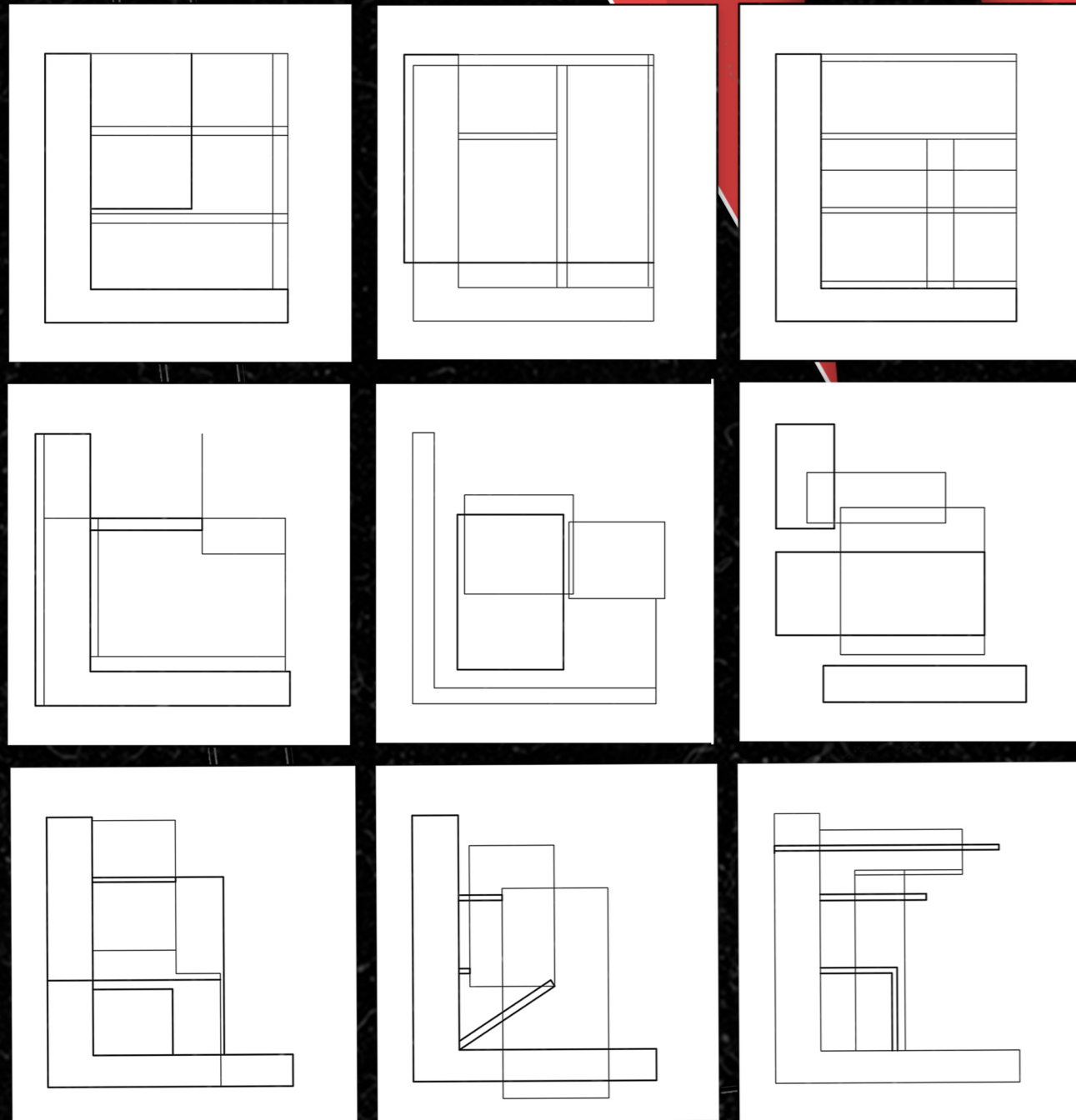
BULLYARD

Beyond
The

Grid

Modernism

Deconstructivism



Facadism



Can The Implementation Of Graphic Design Within Architecture Be Used To

The Blur Distinction
Between 2D and 3D Forms
While Informing A New Approach To Facadism

3D Space



2D Graphics

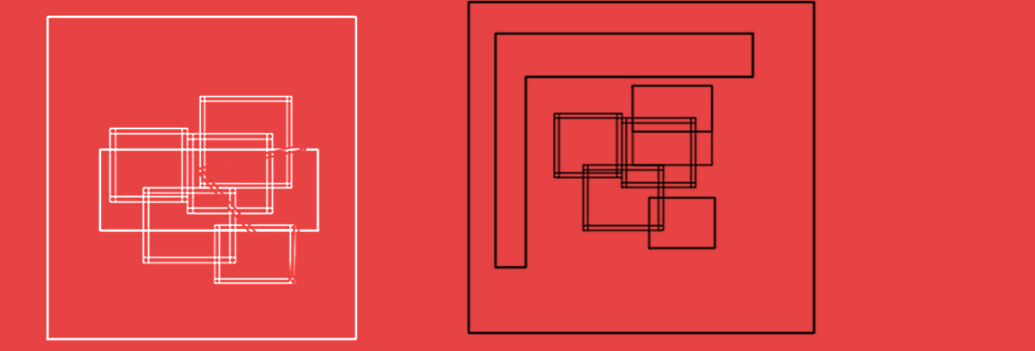
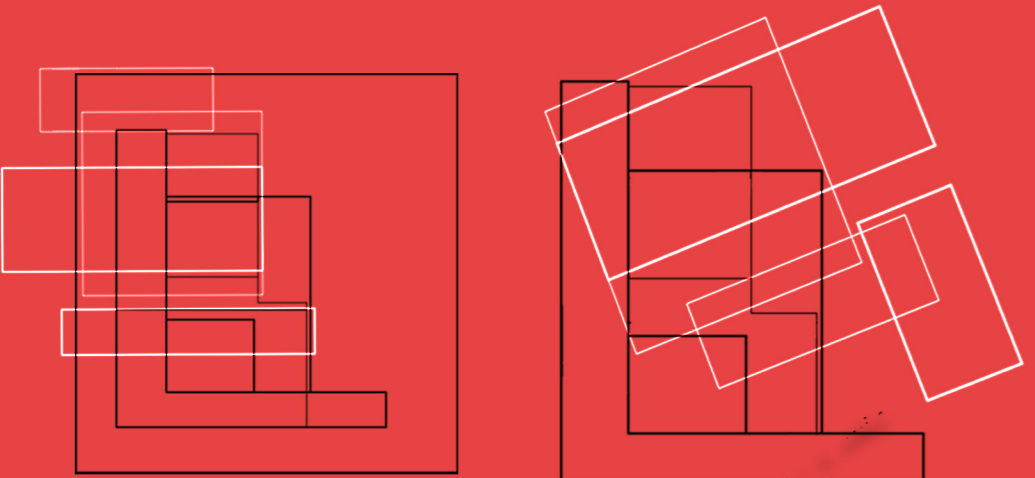
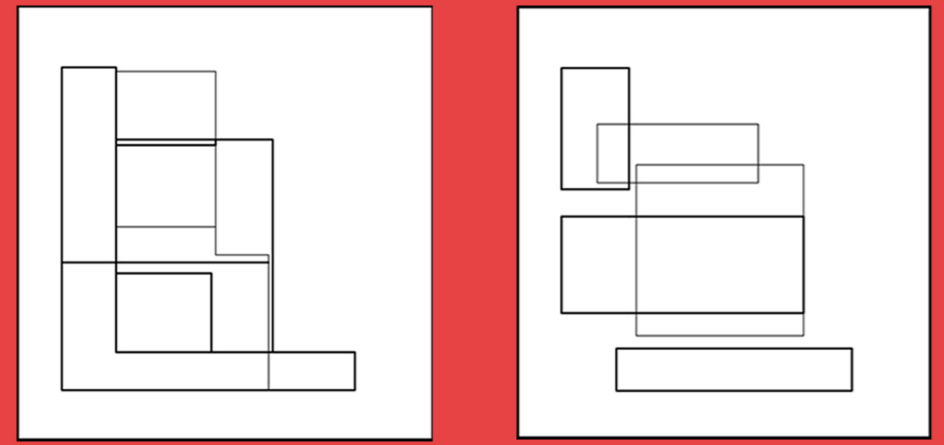


3D Graphics

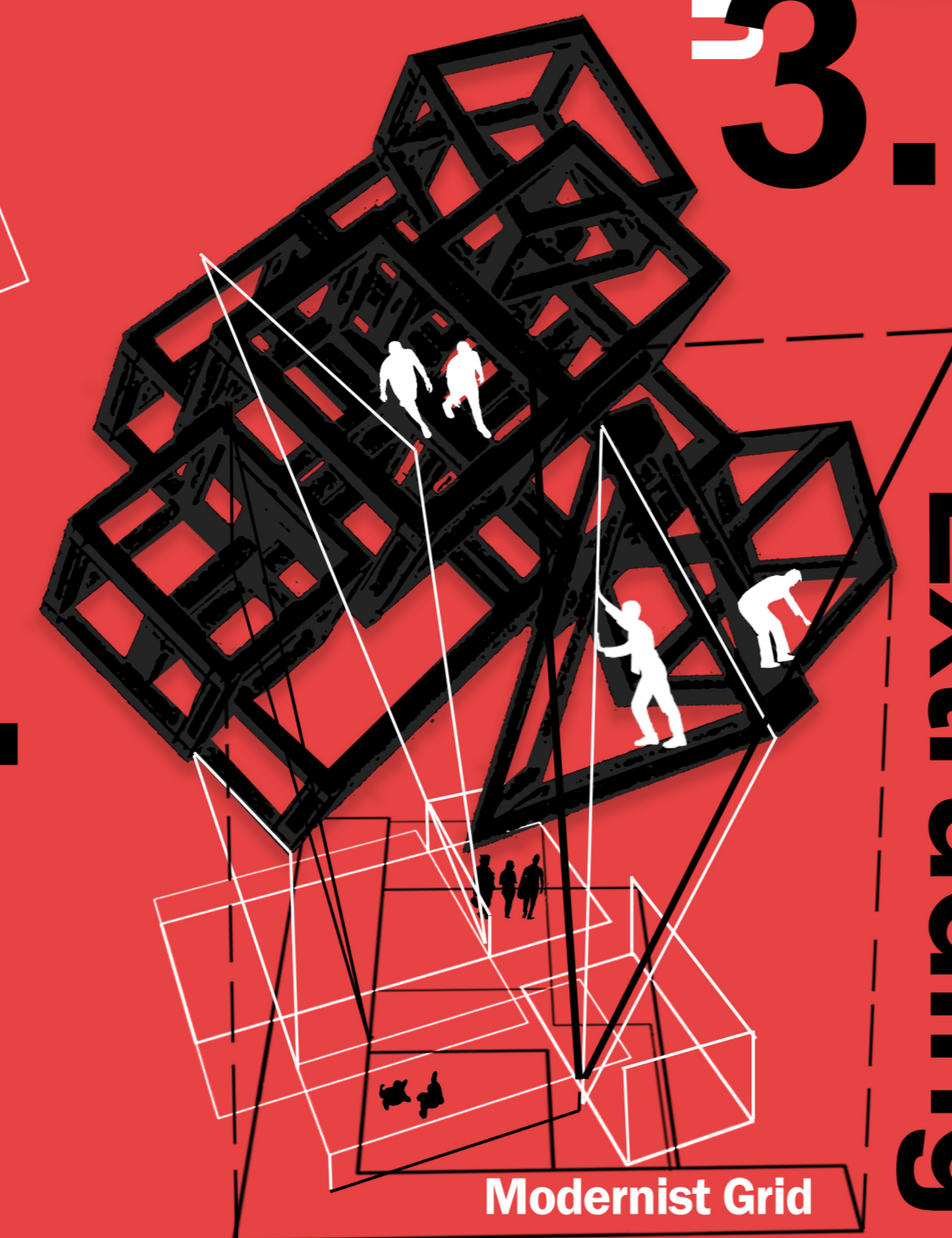
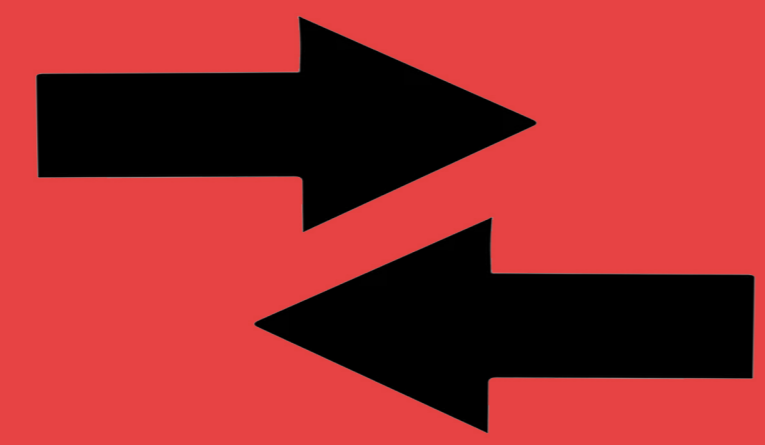
Pre Grid Grid Grid determined

The 3D structure derives from the intentional flexibility of a graphical grid. The site floorplan is analysed and turned into a series of grids based on the architectural aims of Modernism, Deconstructivism and Facadism. The 2D structure is then extruded to inform a spatial structure; allowing the structure to go beyond the grid and forming a deconstructed and functionally questionable spatial.

Beyond The Grid and Further Than Modernism



Intersecting 1.

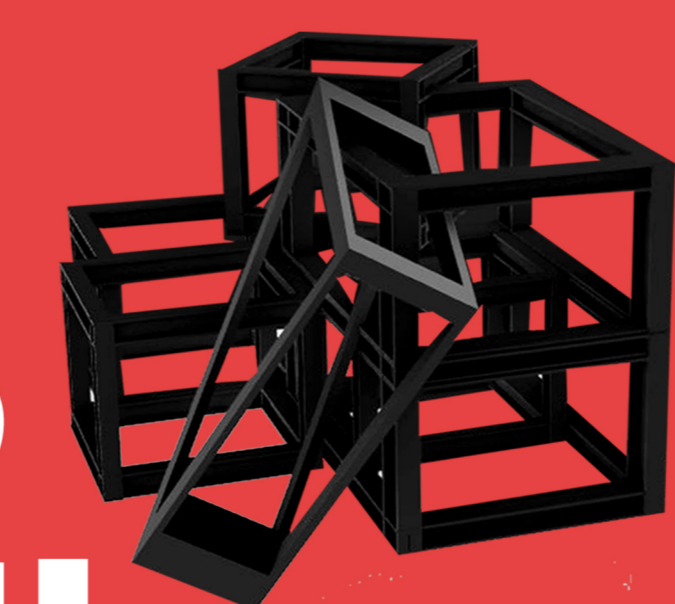


Modernist Grid

Facadism 3.

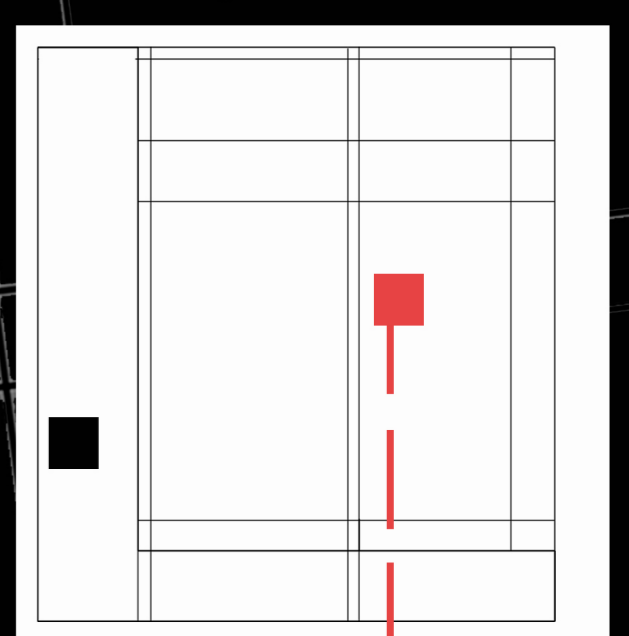
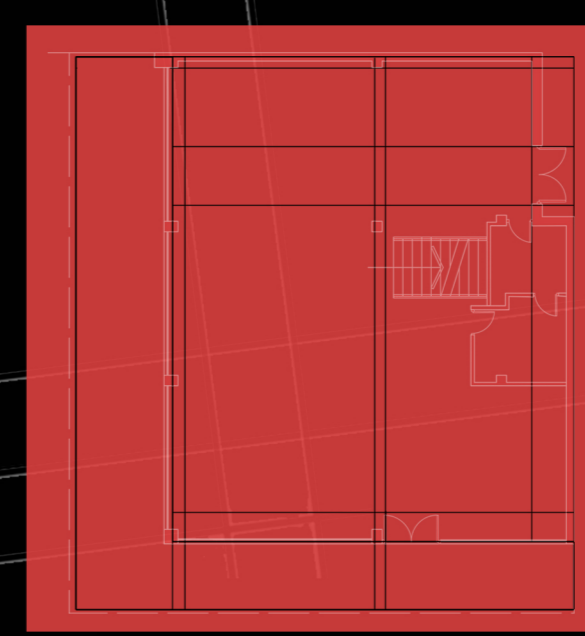
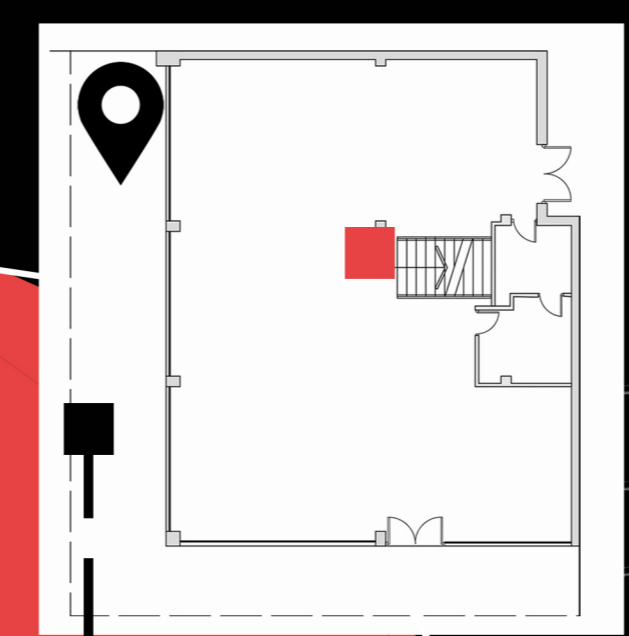
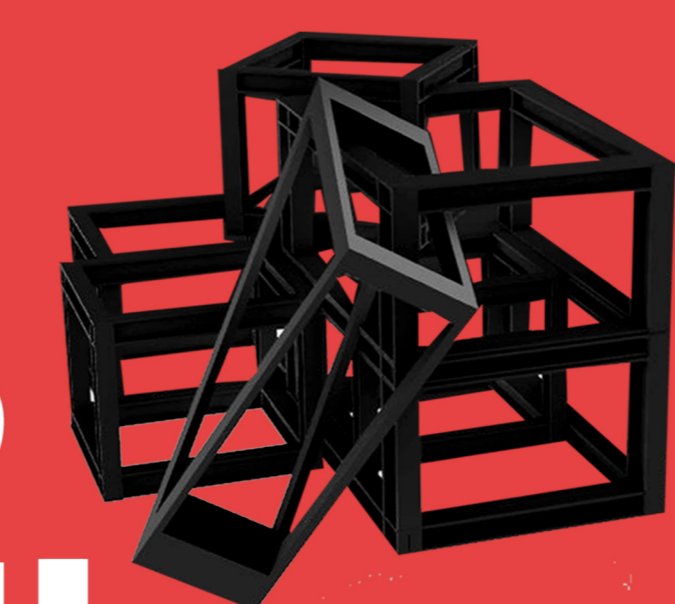


Extruding 2.



The Predetermined Grid
Deconstructing a 3D spatial base that the theory is implemented within, providing the base for spatial thinking and informing facadism. The structure is built up using graphical thinking, latching on and preserving historic building informing facadism and adaptive reuse in Modernism.

Grid Variation



The Grid System

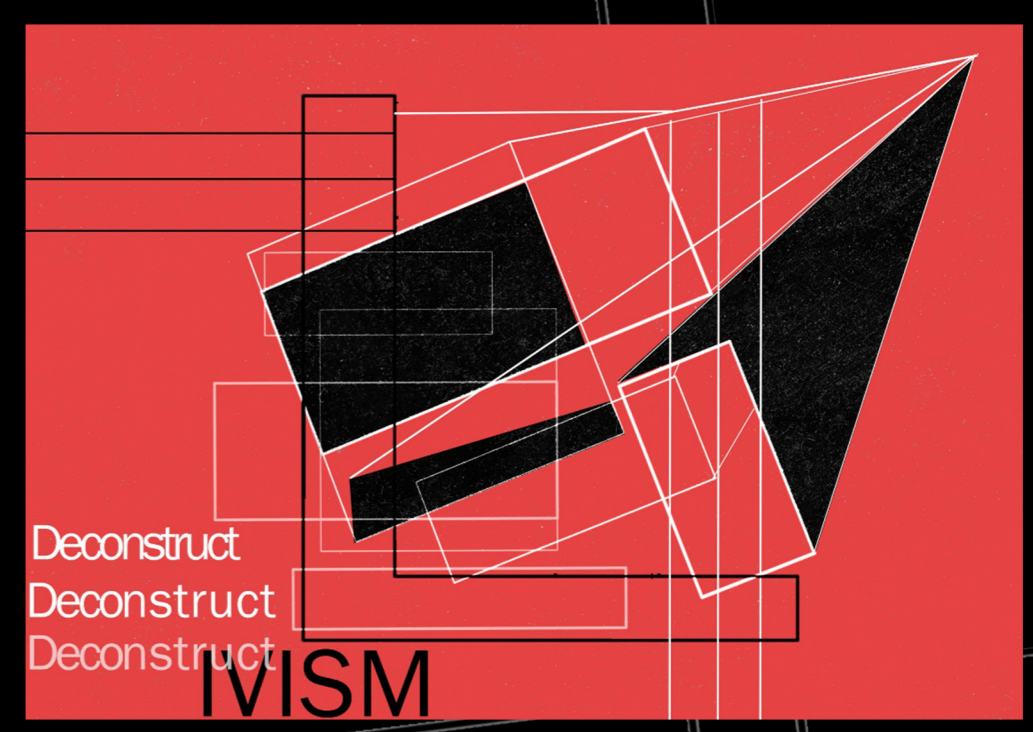
Reconstruction

Extruded Relief Panels

Structural Beams

Conceptual Graphics

Grid Extrusion Into 2D Graphics



Deconstruct
Deconstruct
Deconstruct

IVISM



Modern
Modern
Modern

ISM

The Predetermined Theory Theory

Flipping The Theory Around

The Predetermined Theory

The Predetermined Grid provides the 3D spatial that the theory is implemented within, providing the base for spatial thinking and informing facadism. The structure is built up using graphical thinking; latching on and deconstructing a historic building.

Spatial Thinking
3D Space

2D Graphics
Informing

2D
3D



graphics

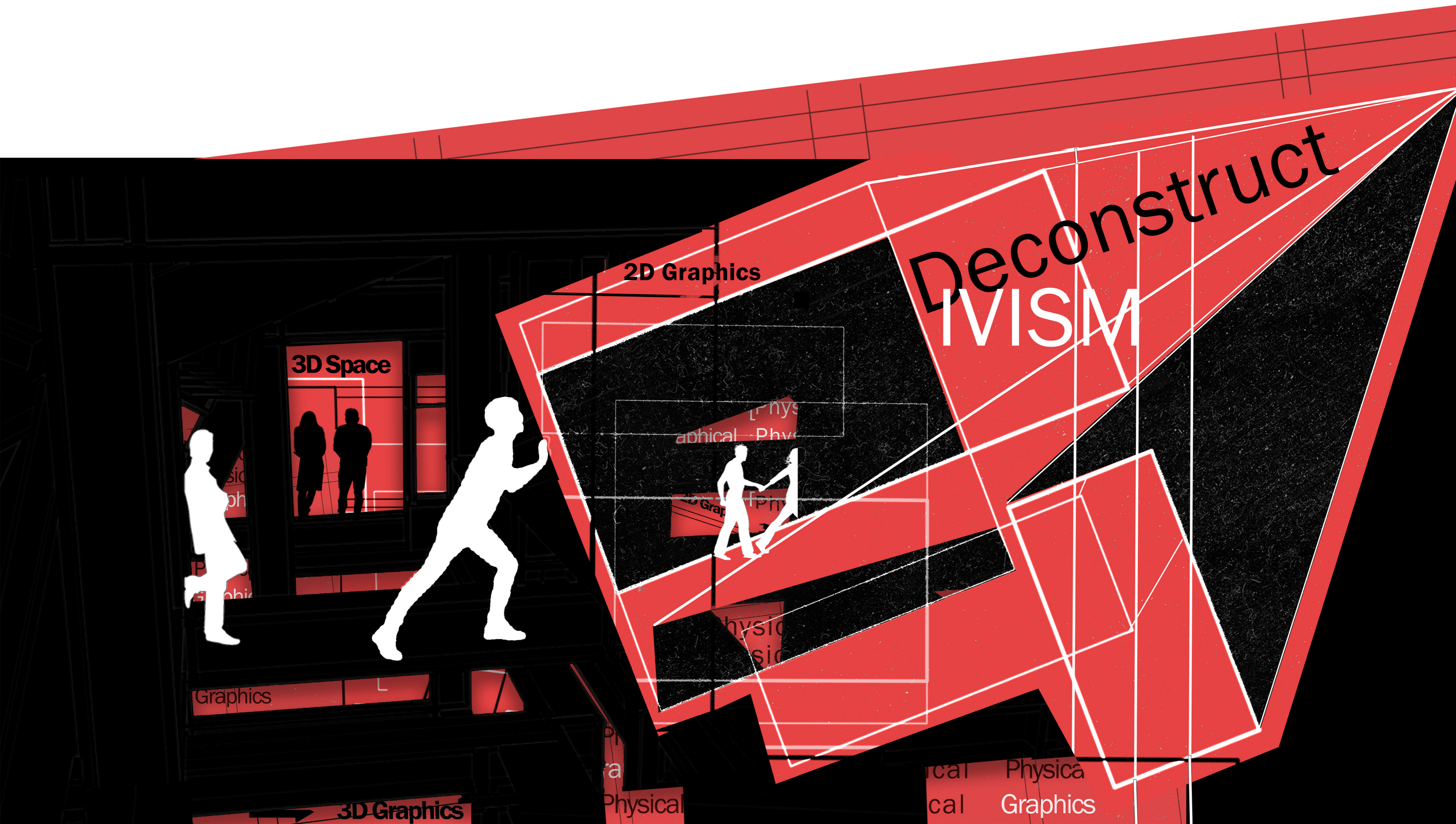
How can a middle ground be found between 2D graphics and 3D architecture?



Can the 2D element unfold and then refold into a new 3D spatial envelope?

The Predetermined Theory delves into the interconnection of graphic design and architecture through spatial thinking informing graphical thinking. Through reacting to previous theories like Alberti's Window, by flipping it around with the final outcome informing a physical, 3D graphic rather than a 3D spatial.

3D Graphics
Graphical Thinking



Multidisciplinary visual - breaking the boundaries of design through the integration of 2D and 3D graphical output. Delving into digital graphics and the collaging of physical screen-prints.