

THE Abode PROJECT

A new approach to tackling homelessness & creating community through design...

320,000 PEOPLE ARE CURRENTLY ESTIMATED TO BE HOMELESS WITH 1 IN 4 HOUSEHOLDS AT IMMINENT RISK OF BECOMING HOMELESS

With homelessness levels reaching new record highs due to a combination of the economic fallout from Covid-19, a continual lack of affordable housing, the recent cost of living crisis and rising inflation levels, more people than ever before are being pushed into homelessness. More suitable schemes and accommodations to tackle this and support those struggling are more important than ever before.

The Abode project is a homeless shelter that aims to create a new kind of co-housing residency to house the homeless and those most vulnerable in our society. The Abode project welcomes all, with a focus on safe residency and daytime spaces for use by the homeless offering support, structure and opportunities as well as creating safe public spaces such as shops, restaurants, salons (etc.) open to all for with the aim to reintegrate those suffering from homelessness with the wider society that they are often ignored and stereotyped by.

The projects structural design creates opportunity for social interactions and bonds to form between residents and the wider community. With a warm, sensitive and welcoming atmosphere, the Abode project intends to turn the idea of what a homeless shelter is and its stereotypes on its head benefitting the users not only through its scheme of strategy, support and residence but also through its design.



LOCATED

Right in the heart of Birmingham City...

“That’s right, it’s all happening in Digbeth”

The Abode Project is ideally located in Digbeth’s former Ladrooke House, a historic and vibrant area in Birmingham. Its proximity to local amenities, such as shops, restaurants, and transport links, is advantageous. Digbeth’s fusion of industrial and modern urban style, showcased through murals and graffiti, contributes to its popularity as an up-and-coming area. The community-focused nature of Digbeth is evident through various events and markets, such as Digbeth Fridays, Vintage markets, and Dining Clubs, fostering connections

among people from diverse backgrounds. The Abode Project aims to create opportunities for communities and will collaborate with Digbeth event planners to host regular events within its premises. This integration strengthens Abode’s relationship with Digbeth while generating revenue that supports the organization’s charitable efforts in community outreach for the homeless and other vulnerable groups. They will also ensure for any funds to be put back into support those that currently reside at Abode.



IS IT YOUR FIRST TIME HERE?



1. Welcome to Abode! Enter through the large main entrance and experience our unique mixed-use space, combining food and commercial offerings.
2. As a future resident of Abode, our staff at the ground floor community and health center will assist with forms, guide your career selection, provide ongoing support.
3. At the Abode community center, residents and vulnerable individuals in the wider community can receive tokens & day passes for Abode’s facilities after a meeting with staff.
4. Everyone is welcome at Abode, whether or not you’re seeking residency. You can immediately start using our amenities. Why not begin with a meal at the mezzanine restaurant?
5. Whether you’re here to get a haircut and a makeover? Interact with residents of Abode who in each of these places.
6. Maybe you’re here to get a haircut and a makeover? Interact with residents of Abode who in each of these places.
7. As a resident, when you’re ready, head upstairs to your private bedroom. Once you’re settled in, you can meet your neighbors in the shared social spaces.
8. Settled in? Enjoy regular markets & pop-up events in Digbeth, happening bi-weekly, open to both residents & the wider community. Meet new people, socialize, and have fun!

CONCEPTUALLY DESIGNING THROUGH THE MEDIUM OF COLLAGE

Collaging Art is a method of bringing fragmented & different mediums/pieces together to create one ‘whole’ and beautiful thing. The method behind collaging is representative of Abode’s aims which directly involves bringing different groups of people together to create one community, one holistic scheme and design.

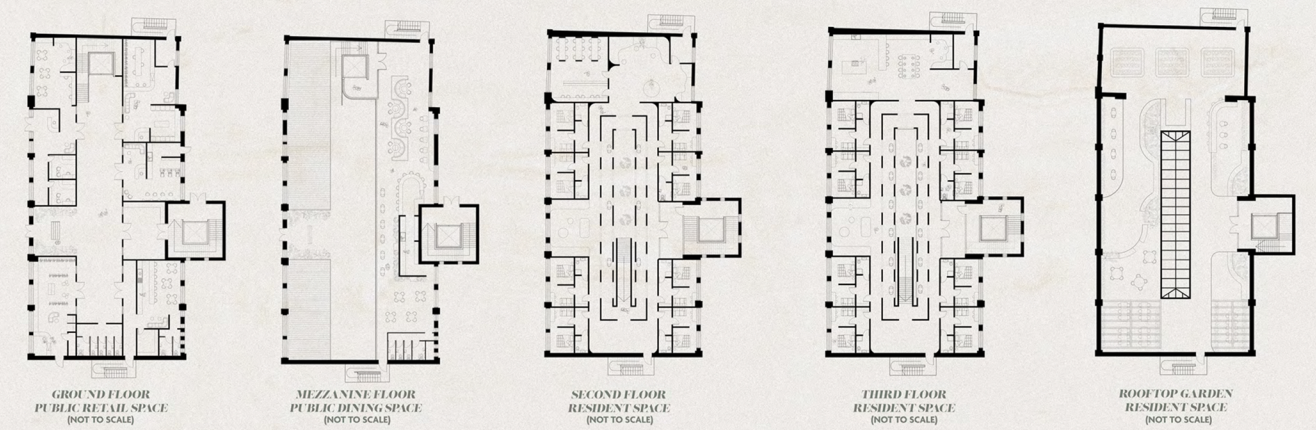
1. Rooftop Garden
2. Shared Kitchen
3. Private Living Space
4. Shared Working Space
5. Shared Library
6. Communal Indoor Courtyard
7. Public Retail & Food Space



CREATING STRUCTURE, SUPPORT & OPPORTUNITY FOR FREEDOM OF CHOICE

“People need more than just a roof over their head and a bed”

This collage represents the division of space between private co-housing zones and public retail and food outlets on the ground floor. Homeless individuals can work and retain here, providing structure and opportunities for meaningful change in their lives. The architectural arch element mirrors the industrial aqueducts of Digbeth, while the bold and playful designs in the upper levels reflect the freedom that structure, support, and opportunity can bring to those experiencing homelessness.



PLAYFUL BRIGHT & WARM WELCOMING SPACES

The space at Abode has been thoughtfully designed to create a warm and welcoming atmosphere. Soft and inviting color palettes, inspired by design psychology, are used throughout the upper residential levels. Abundant natural light fills the space, thanks to the newly designed glass atrium covering the indoor courtyard.

Community is at the heart of every floor’s design. A central circulation system brings people together, encouraging interaction and crossover. The layout is inspired by terraced housing communities, known for their close-knit nature. The proximity of doors and the horizontal placement of private residential, retail, and commercial spaces foster further opportunities for social interaction. This design choice contrasts with detached homes, which create more physical distance and fewer chances for spontaneous connections.



THE ABODE PROJECT STAGGERED SECTION AA

