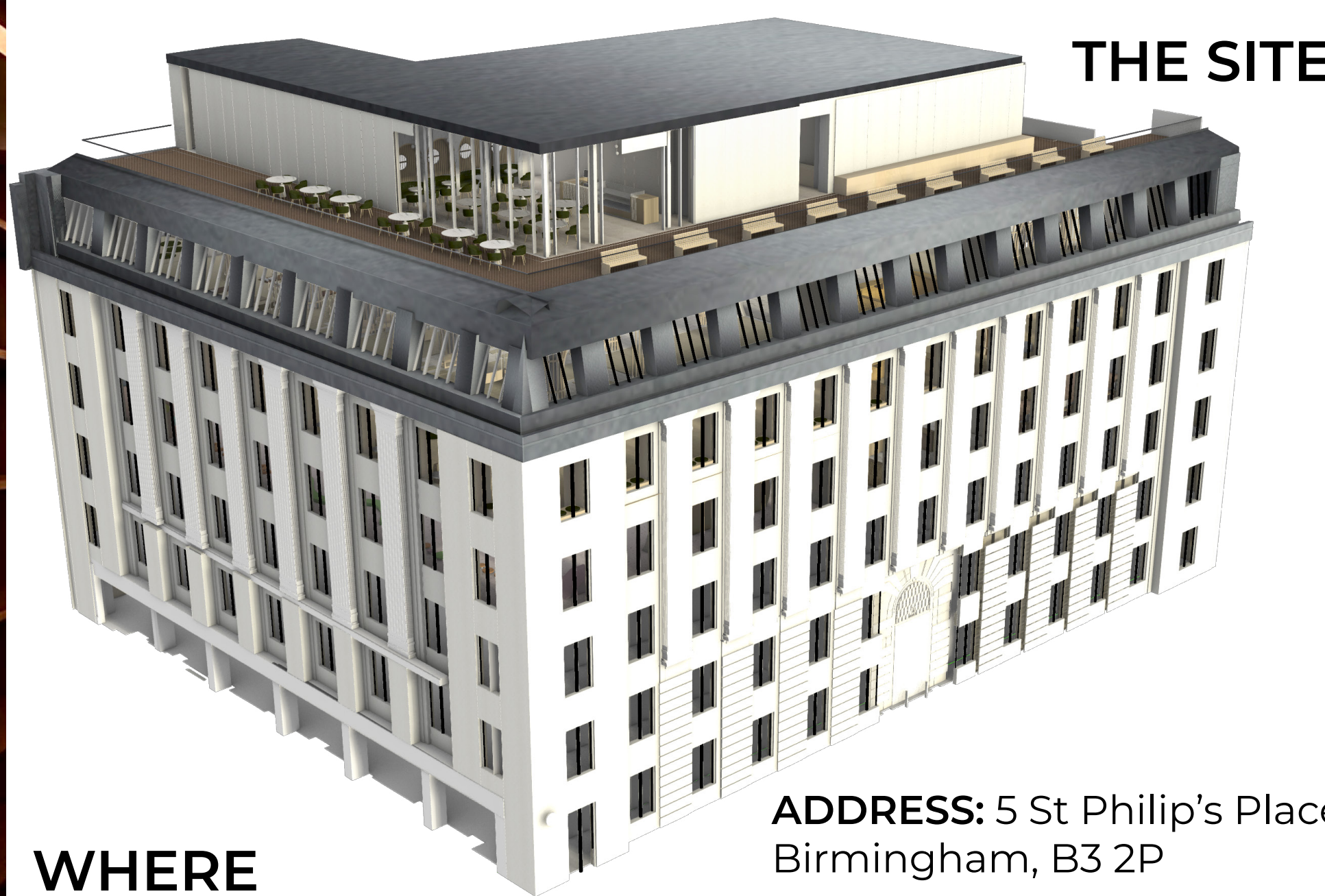




THE SANCTUARY

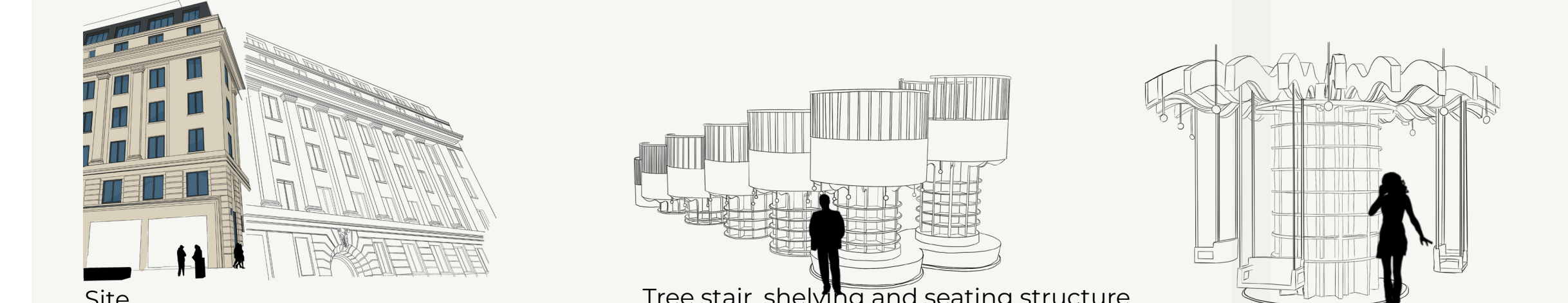


ADDRESS: 5 St Philip's Place, Birmingham, B3 2P

WHERE

The building's **prime location**, coupled with its **history** and **architectural features**, make it an ideal site for a project that seeks to **blend tradition with modernity** and bring a new level of **functionality** and **purpose** to the building.

Rendered section



WHAT

The project aims to create a **dynamic** and **multifunctional** space that embraces the **concept of Third Space**, where individuals can **escape the demands of their daily lives** and find solace in a carefully **curated environment**. It comprises three distinct areas: a **wellness floor**, a **library and exhibition floor**, and a **nursery and playspace floor**. Each space follows a specific theory - the **attention restoration theory** in the **wellness** and **library areas** and the **child learning and play development theory** in the **nursery**.

THE CONCEPT

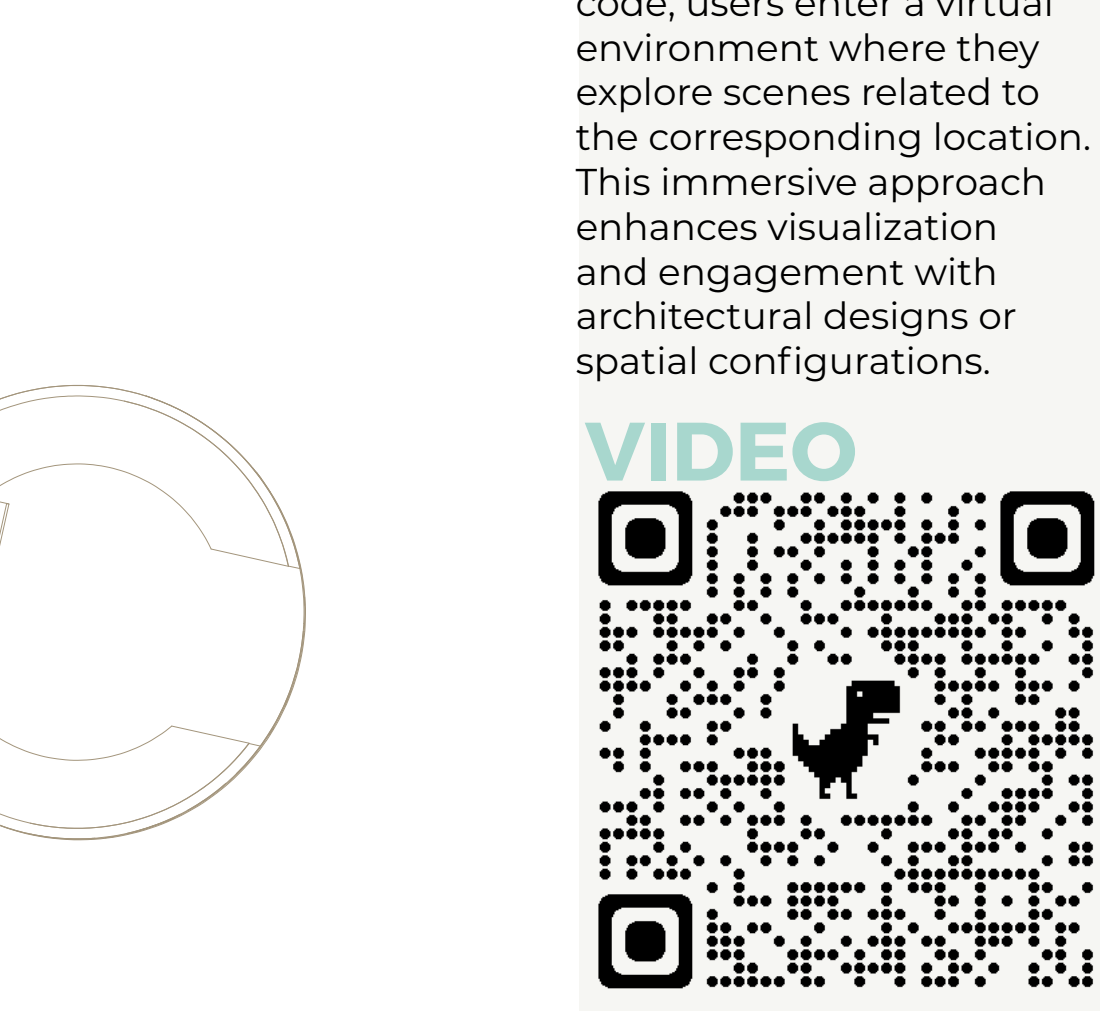
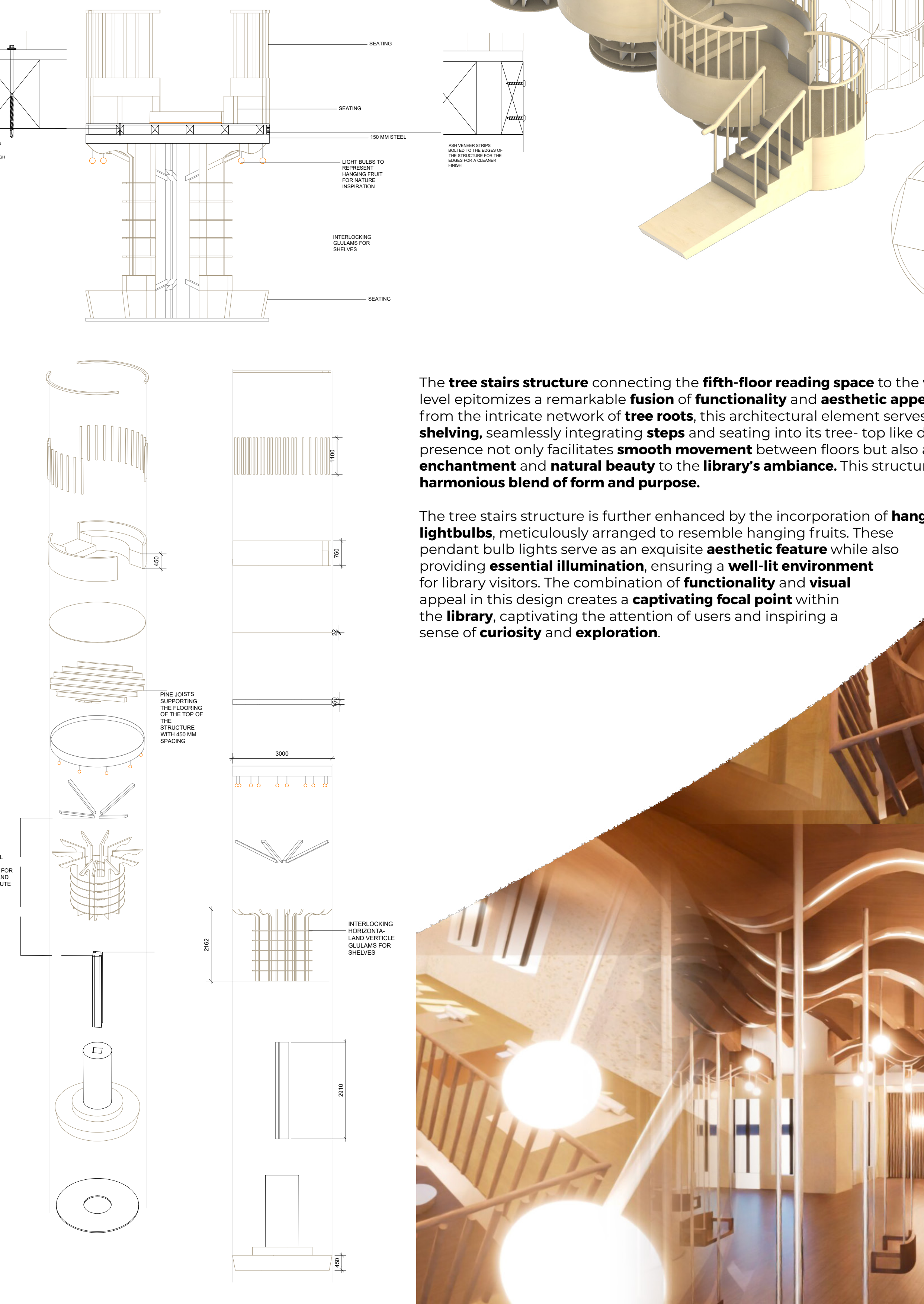
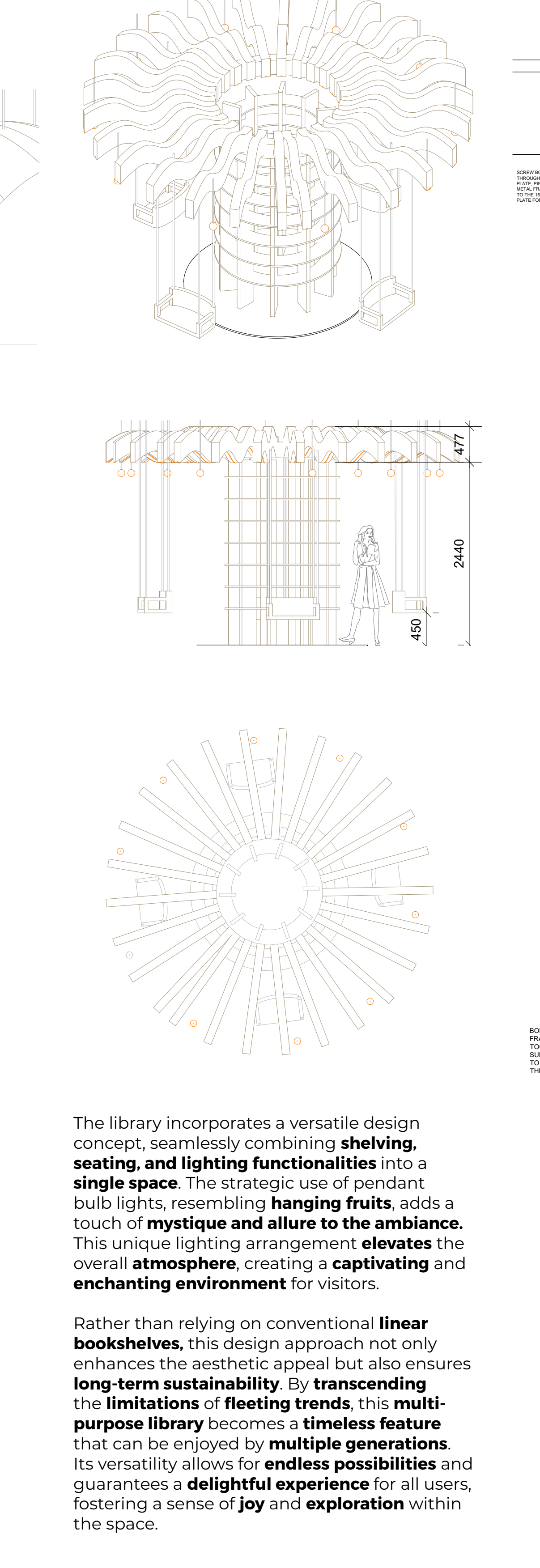
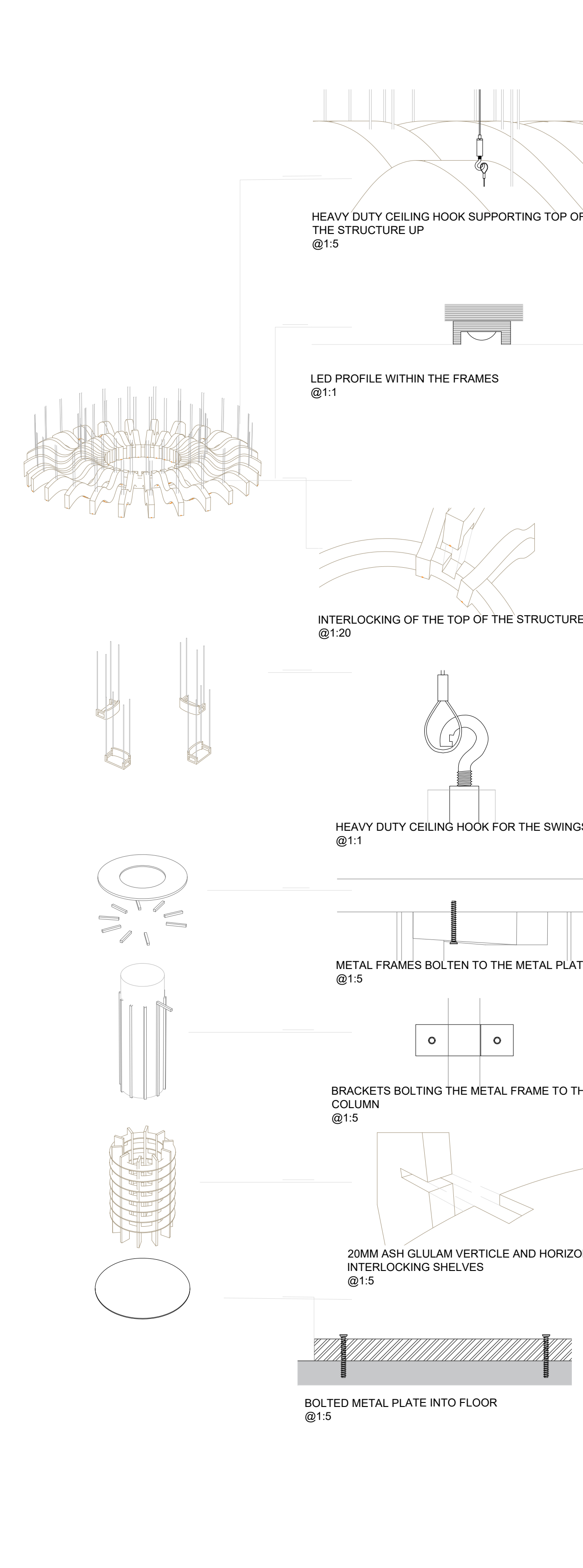
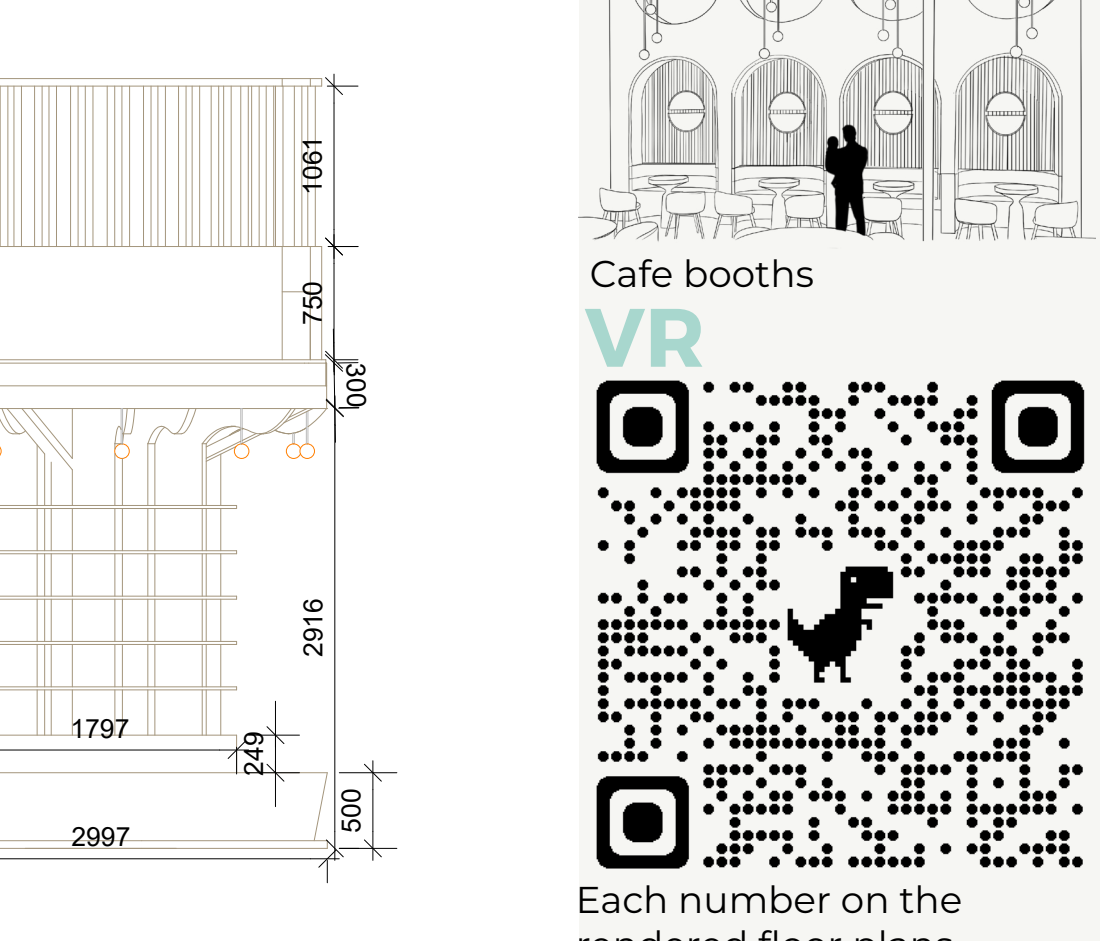
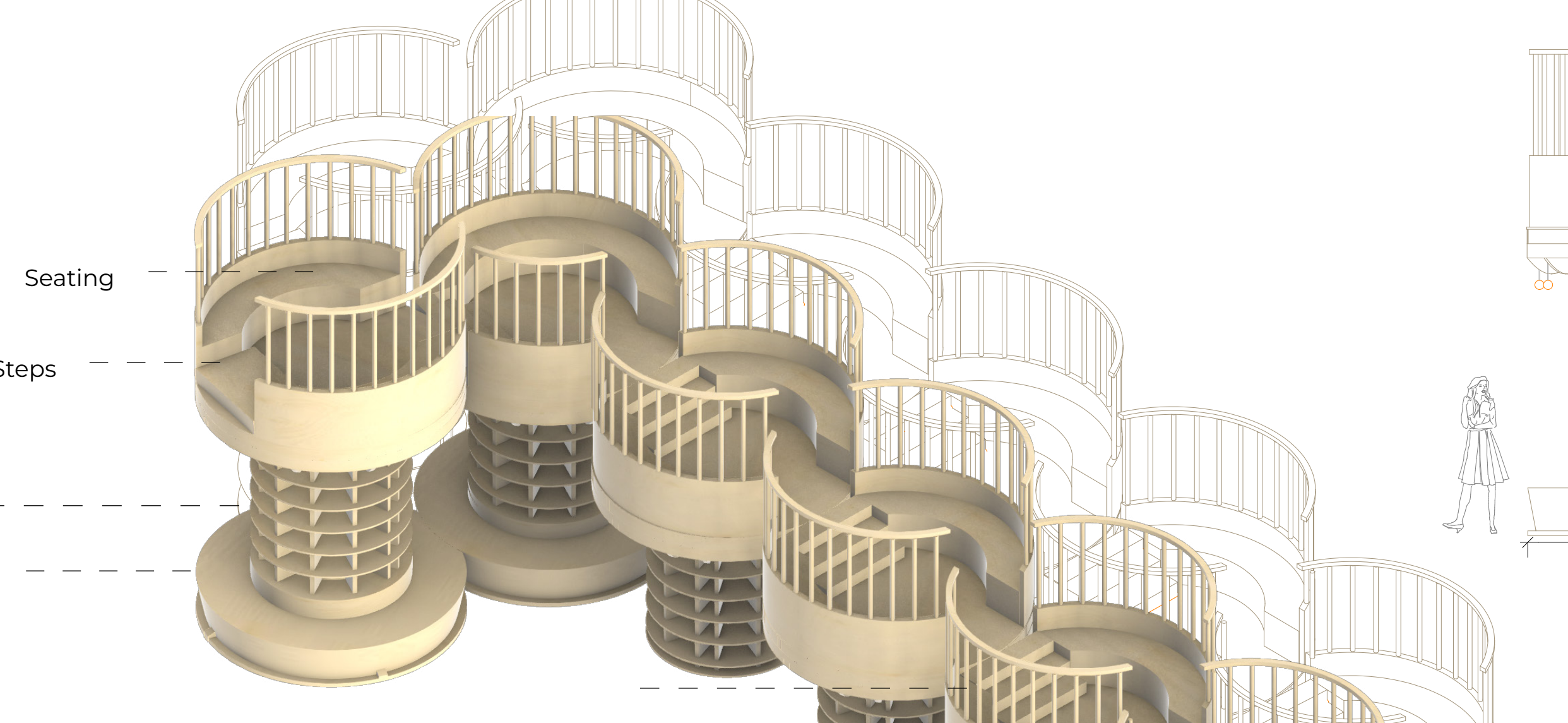
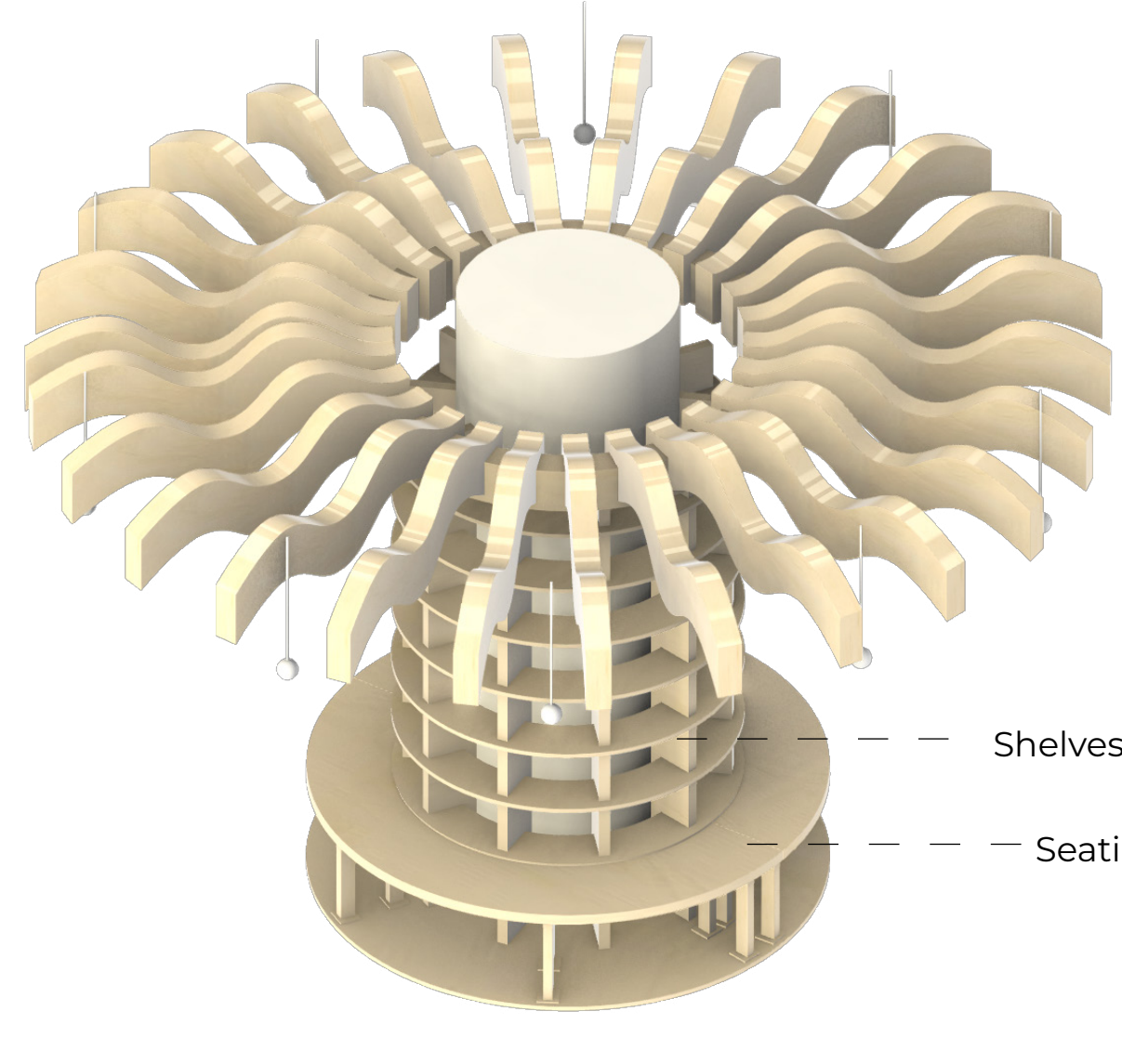
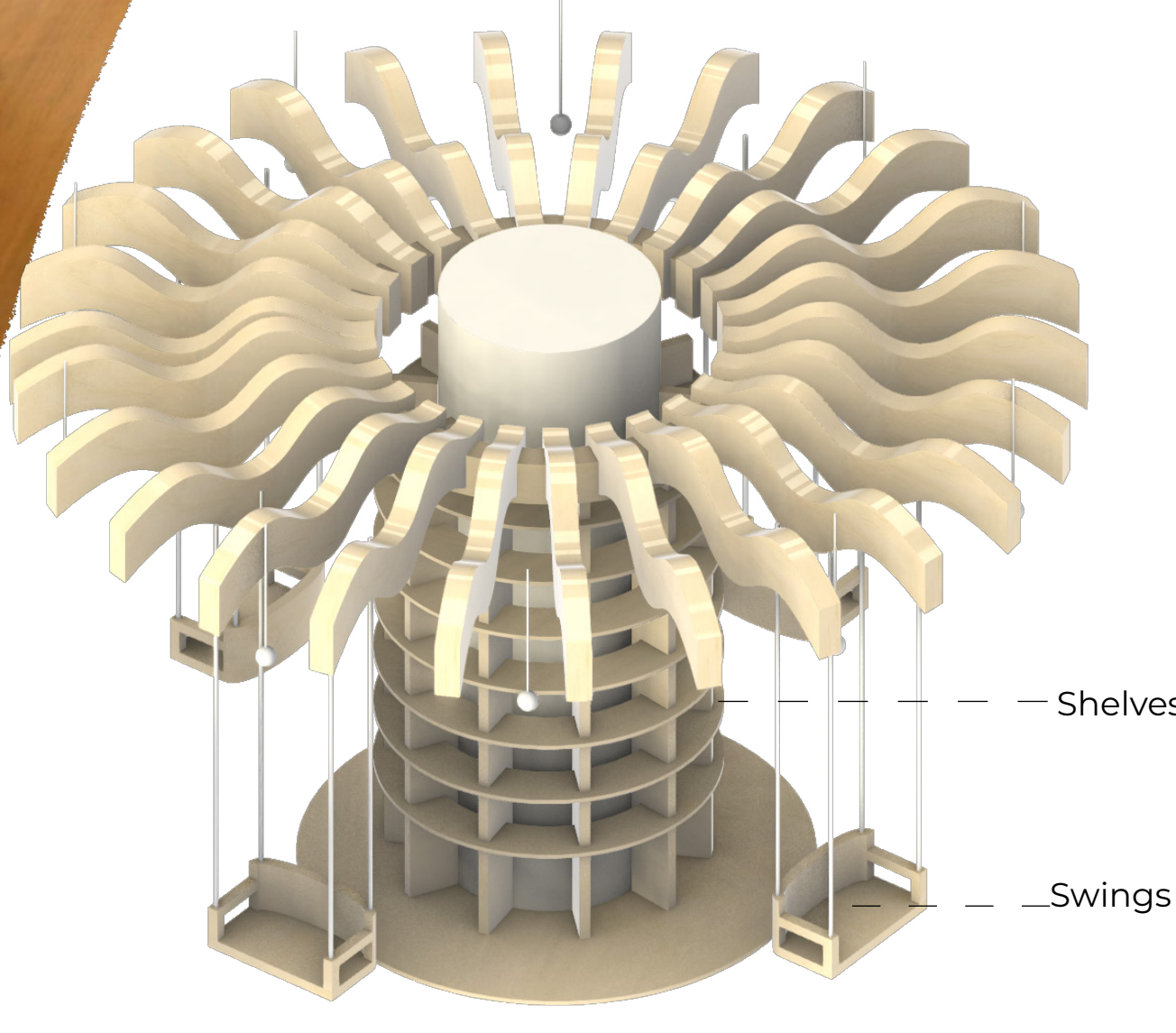
The project **incorporates** the concept of **third spaces**, which are designed to provide a **welcoming** and **inclusive** environment for individuals beyond their home and workplace. It also **integrates principles** from **child learning** and **play development theories**, ensuring that the spaces **cater to the needs of children** and support their cognitive, social, and physical development. Additionally, the **attention restoration theory** is applied in the design to create spaces that **promote relaxation**, **reduce stress**, and **enhance focus** and **well-being**.

WHY

The project aims to address the **modern-day challenges** of **mental fatigue**, **stress**, and **disconnection** by providing **innovative spaces** that **foster well-being**, **creativity**, and **personal growth**. By integrating the **attention restoration theory** and **child learning** and **play development theory**, it offers a holistic approach to **rejuvenation**, **education**, and **self-discovery**. The project strives to create an **inclusive and nurturing environment** that caters to the needs of diverse individuals, helping them find balance and meaning in their lives.

WHO

The project is designed for individuals seeking a **transformative experience** in a **welcoming** and inspiring environment. It caters to **professionals**, **families**, and the **local community**, providing a haven for **relaxation**, **learning**, and **play**. It embraces inclusivity, inviting people of all ages, backgrounds, and abilities to partake in the offerings and benefit from the unique spaces created.



The library incorporates a versatile design concept, seamlessly combining **seating**, **lighting functionalities** into a **single space**. The strategic use of pendant bulb lights, resembling **hanging fruits**, adds a touch of **mystique and allure to the ambience**. This unique lighting arrangement **elevates the overall atmosphere**, creating a **captivating and enchanting environment** for visitors.

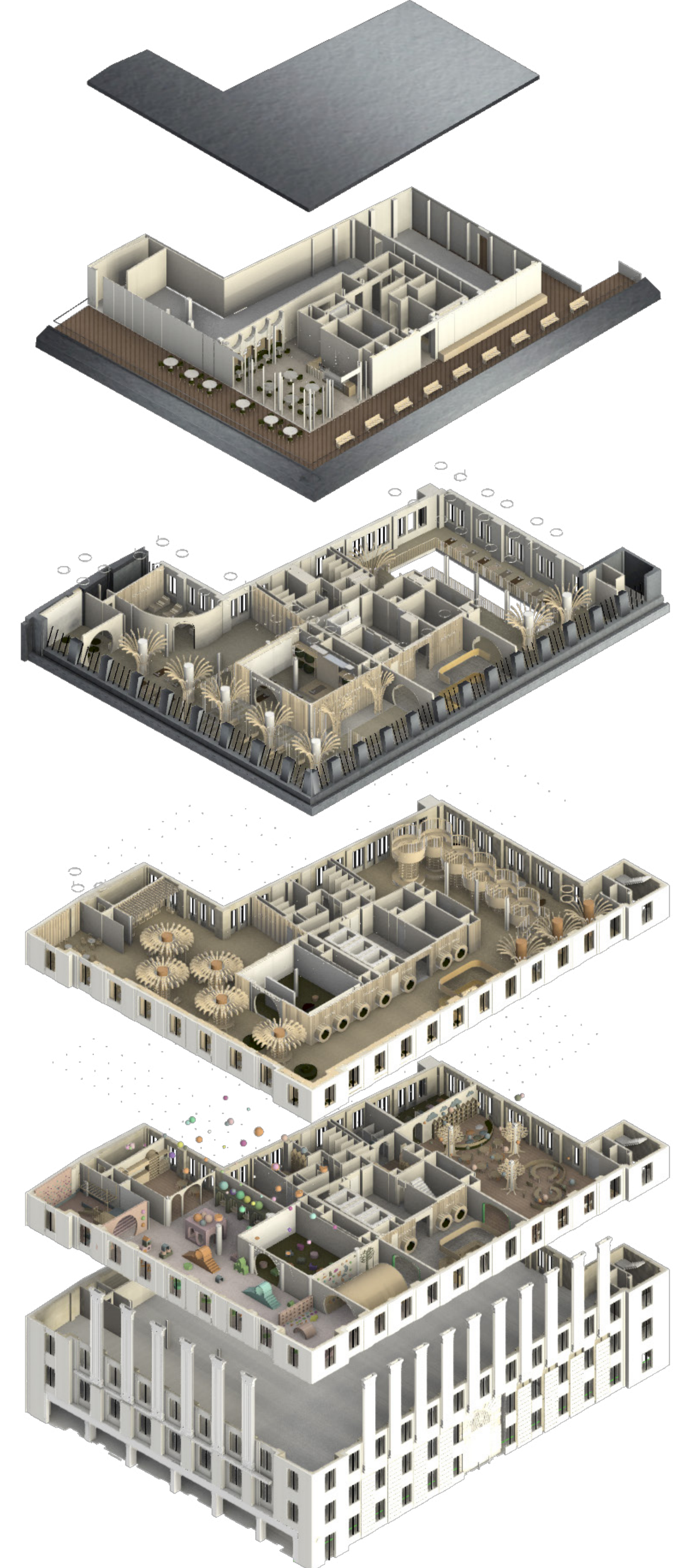
Rather than relying on conventional **linear bookshelves**, this design approach not only enhances the aesthetic appeal but also ensures **long-term sustainability**, by **transcending the limitations of fleeting trends**; this **multi-purpose library** becomes a **timeless feature** that can be enjoyed by **multiple generations**. Its versatility allows for **endless possibilities** and guarantees a **delightful experience** for all users, fostering a sense of **joy and exploration** within the space.

The **tree stairs structure** connecting the **fifth-floor reading space** to the **wellness floor** on the **sixth level** epitomizes a remarkable **fusion of functionality** and **aesthetic appeal**. Drawing inspiration from the intricate network of **tree roots**, this architectural element serves as both **stairs and shelving**, seamlessly integrating **steps** and **seating** into its tree-top like design. Its **captivating presence** not only facilitates **smooth movement** between floors but also adds a touch of **enchantment and natural beauty** to the **library's ambience**. This structure showcases a **harmonious blend of form and purpose**.

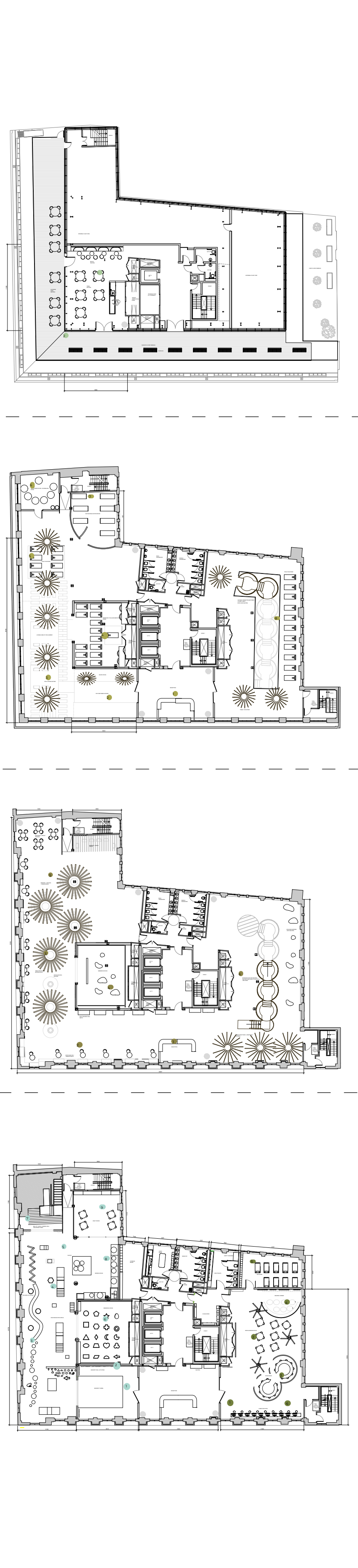
The tree stairs structure is further enhanced by the incorporation of **hanging lightbulbs**, meticulously arranged to resemble **hanging fruits**. These pendant bulb lights serve as an exquisite **aesthetic feature** while also providing **essential illumination**, ensuring a **well-lit environment** for library visitors. The combination of **functionality** and **visual appeal** in this design creates a **captivating focal point** within the **library**, capturing the attention of users and inspiring a sense of **curiosity and exploration**.



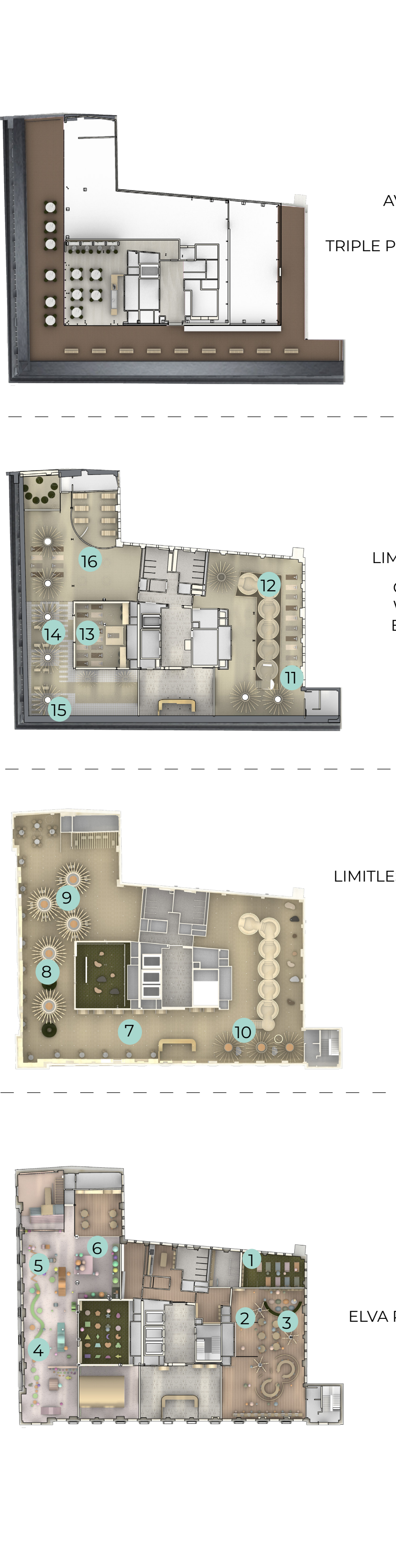
Rendered exploded axo



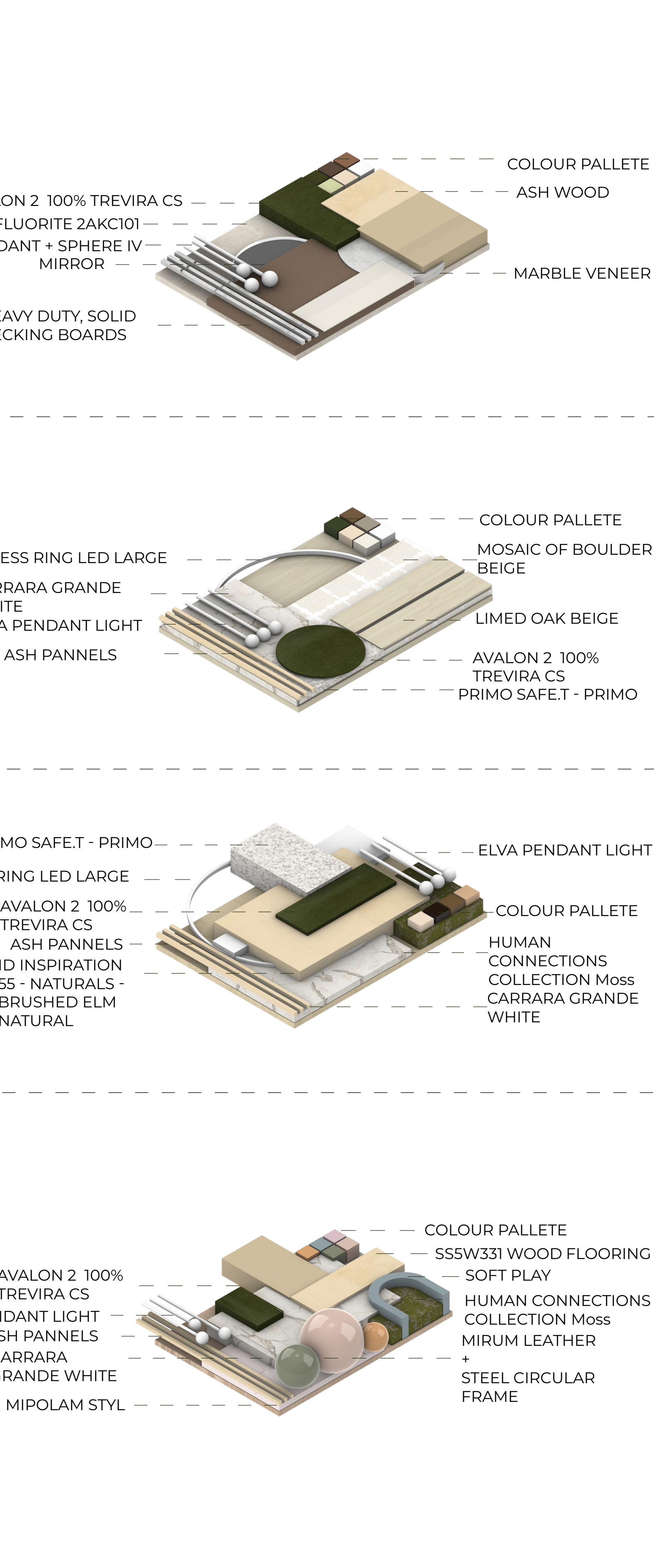
Proposed floor plans



Rendered floor plans



Rendered material boards



FLOOR 7 - CAFE AND TERRACE
Cafe
1. Indoor Cafe Area;
2. Outdoor Terrace;

FLOOR 6 - WELLNESS
Wellness floor
1. Reception Area;
2. Outdoor-Inspired Walkway;
3. Outdoor-Inspired Area;
4. Immersive Yoga Room;
5. Yoga Space Under the Tree Structure;
6. Zen Inspired Room;
7. Massage and Relaxation Room;
8. Yoga Space Around the Tree Structure;

FLOOR 5 - LIBRARY AND IMMERSIVE SPACE
Library
1. Reception Area;
2. Circular Wall Seating and Window Spaces;
3. Tree Structures;
4. Immersive Experience Room;
5. Quiet Reading Space;
6. Tree Structure with Steps or Seating;

FLOOR 4 - NURSERY AND PLAY SPACE
Nursery Learning Space:
1. Alphabets on the wall
2. Classroom area with chairs and tables
3. Separate lunch area with circular tables for mealtime
4. Reading nook for children
5. Nap room on the west side with adjustable lighting for a comfortable rest environment. Beds with cloud-shaped headrests and safety precautions.
6. Computer suite

Playspace:
1. Sensory tunnel
2. Sensory wall
3. Balancing obstacle with steps and balance activities
4. Building blocks area
5. Soft play spaces
6. Enclosed reading and immersive experience room
7. Bulbit and climbing activities area
8. Swing set
9. Craft area

COLOUR PALLETTE
ASH WOOD
MARBLE VENEER
AVALON 2 100% TREVIRA CS
FLUORITE 2AKC101
TRIPLE PENDANT + SPHERE IV
MIRROR
HEAVY DUTY, SOLID DECKING BOARDS

COLOUR PALLETTE
MOSAIC OF BOULDER BEIGE
LIMED OAK BEIGE
AVALON 2 100% TREVIRA CS
PRIMO SAFET - PRIMO
ELVA PENDANT LIGHT

COLOUR PALLETTE
HUMAN CONNECTIONS COLLECTION MOSS
CARRARA GRANDE
WHITE
ELVA PENDANT LIGHT
ASH PANNELS
MIPOLAM STYL
CARRARA GRANDE WHITE

COLOUR PALLETTE
SS5W331 WOOD FLOORING
SOFT PLAY
HUMAN CONNECTIONS COLLECTION MOSS
MIRUM LEATHER
STEEL CIRCULAR FRAME
AVALON 2 100% TREVIRA CS
ELVA PENDANT LIGHT
ASH PANNELS
CARRARA GRANDE WHITE
MIPOLAM STYL