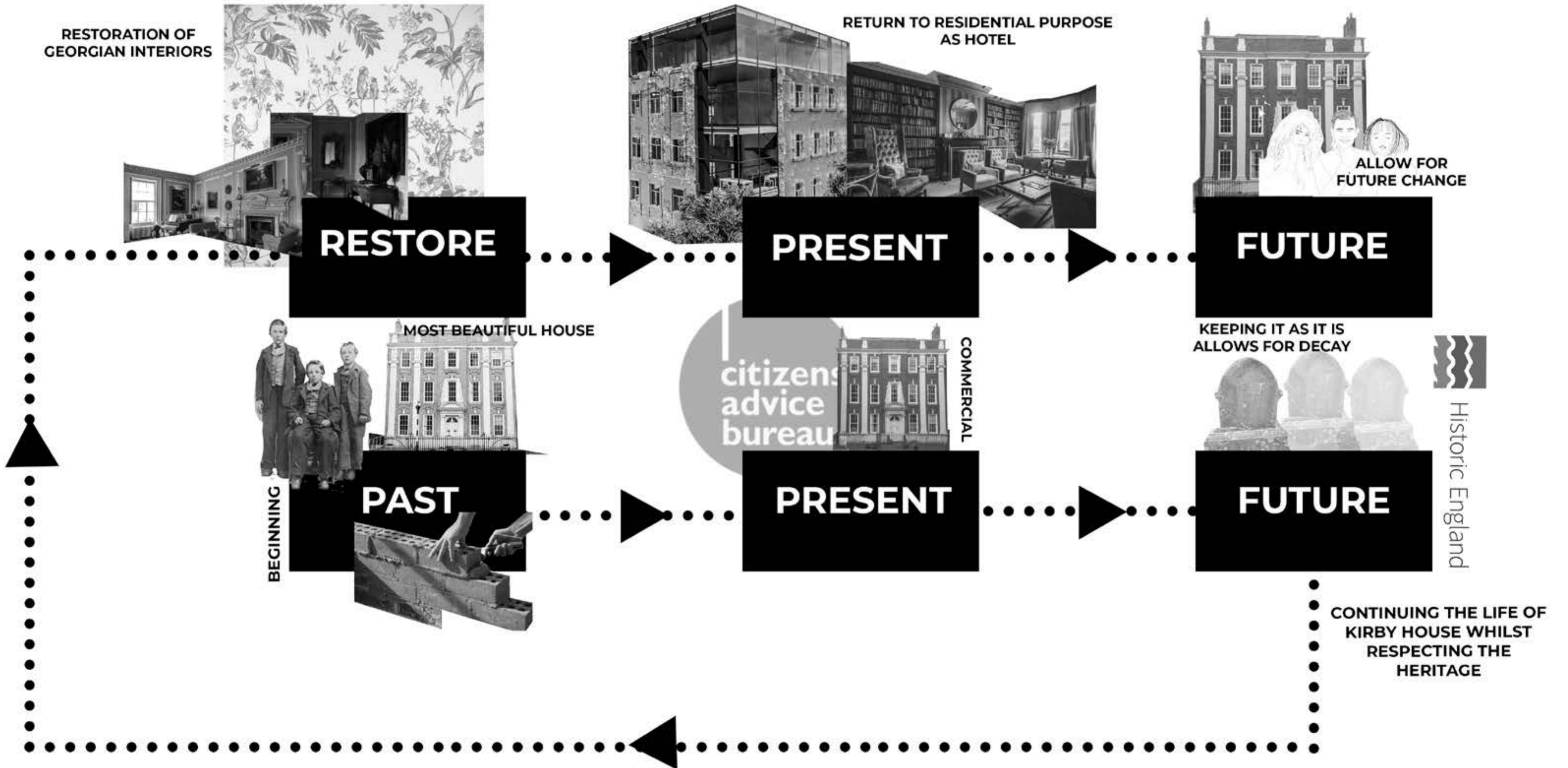


TOWARDS A FUTURE HERITAGE



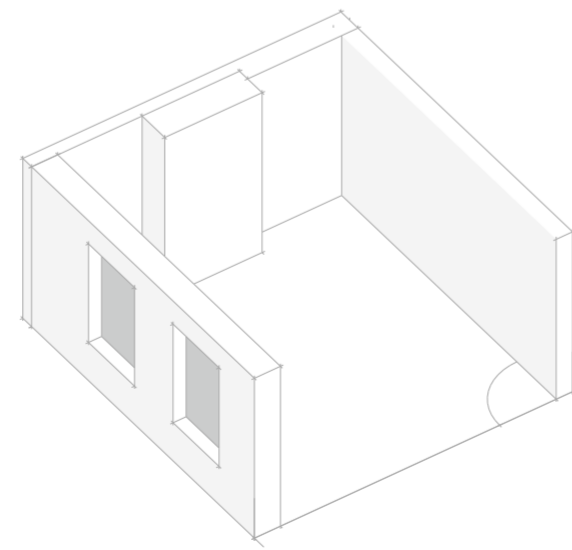
Avacuum is created to protect the existing materials and heritage of Kirby House. Meanwhile, within the vacuum, the future heritage of Kirby House can continue to be made.



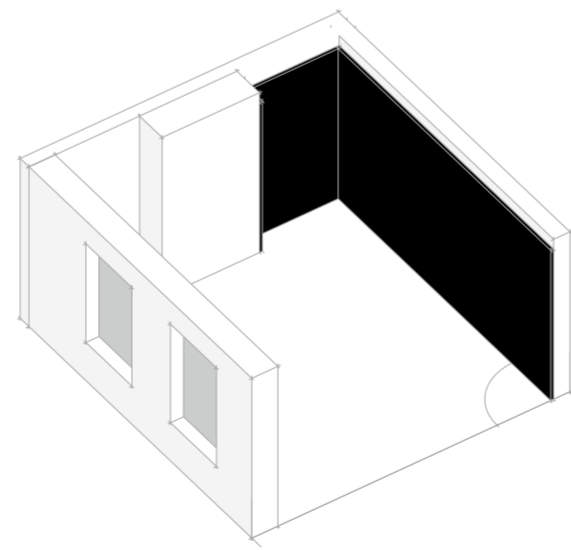
The significance of the Vacuum

To conserve the heritage of Kirby House, a **vacuum protects the old materials from the new**. The existing building is restored to its intended purpose as a beautiful house using Georgian wallpaper and restoring existing Georgian features. Meanwhile, within the Vacuum, **a new layer of heritage is added as modern panelling contrasts the Georgian features**. The Georgian features are also displayed in select areas through Glass panelling, a reminder of the **past that built the foundations for the present**.

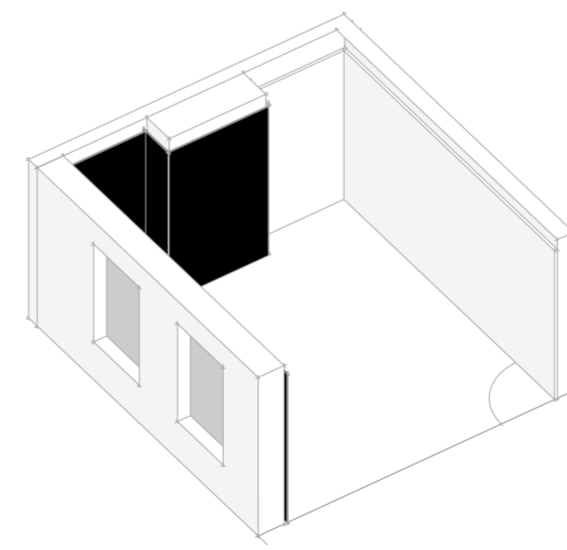
Construction sequence diagram



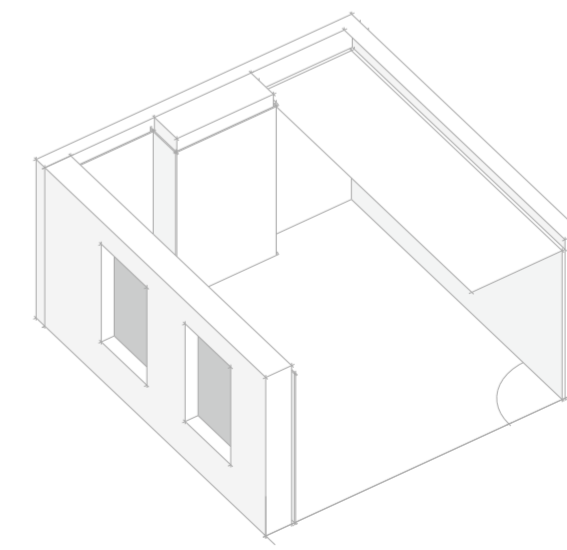
The interior of Kirby House will have **Georgian features restored**. Surfaces should be prepared for the assembly of the capsule.



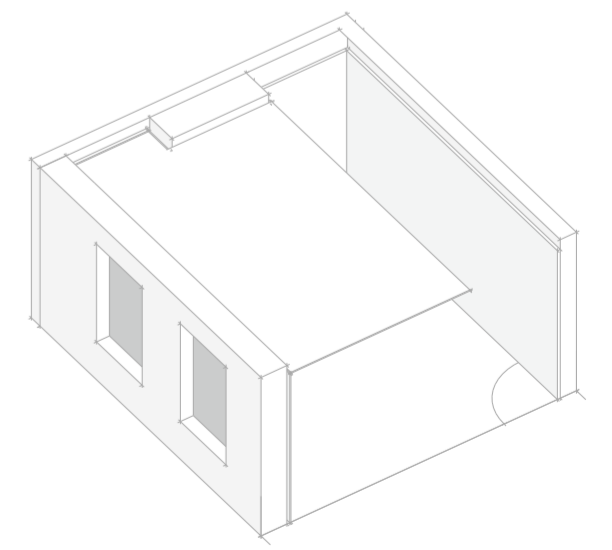
Firstly, the **Plywood panelling** should be fixed to the stud wall.



Next, the **glass panel walls** should be inserted into the brass tracking.



The **Plywood roof** should be fixed to the **structural clamp** which is connected to the ceiling via screws.



Finally, the **tracking** which is to support the **glass ceiling** of the capsule is fixed to the glass walls and plywood roof.



The Barrier to the Material



Future Interiors Form Future Heritage

Use the **QR code** to learn more about how this project was influenced by alternate preservation techniques.

The design solution for Kirby house **aims to restore and preserve the existing heritage of the building** whilst also creating a space where the story of the building is safe to continue.

Exploration took place regarding materiality. Resin models investigated creating a barrier to the material, meanwhile negative impression models of the space investigated the potential of the void.



“If heritage depends on preservation of material, there are opportunities for the void.”

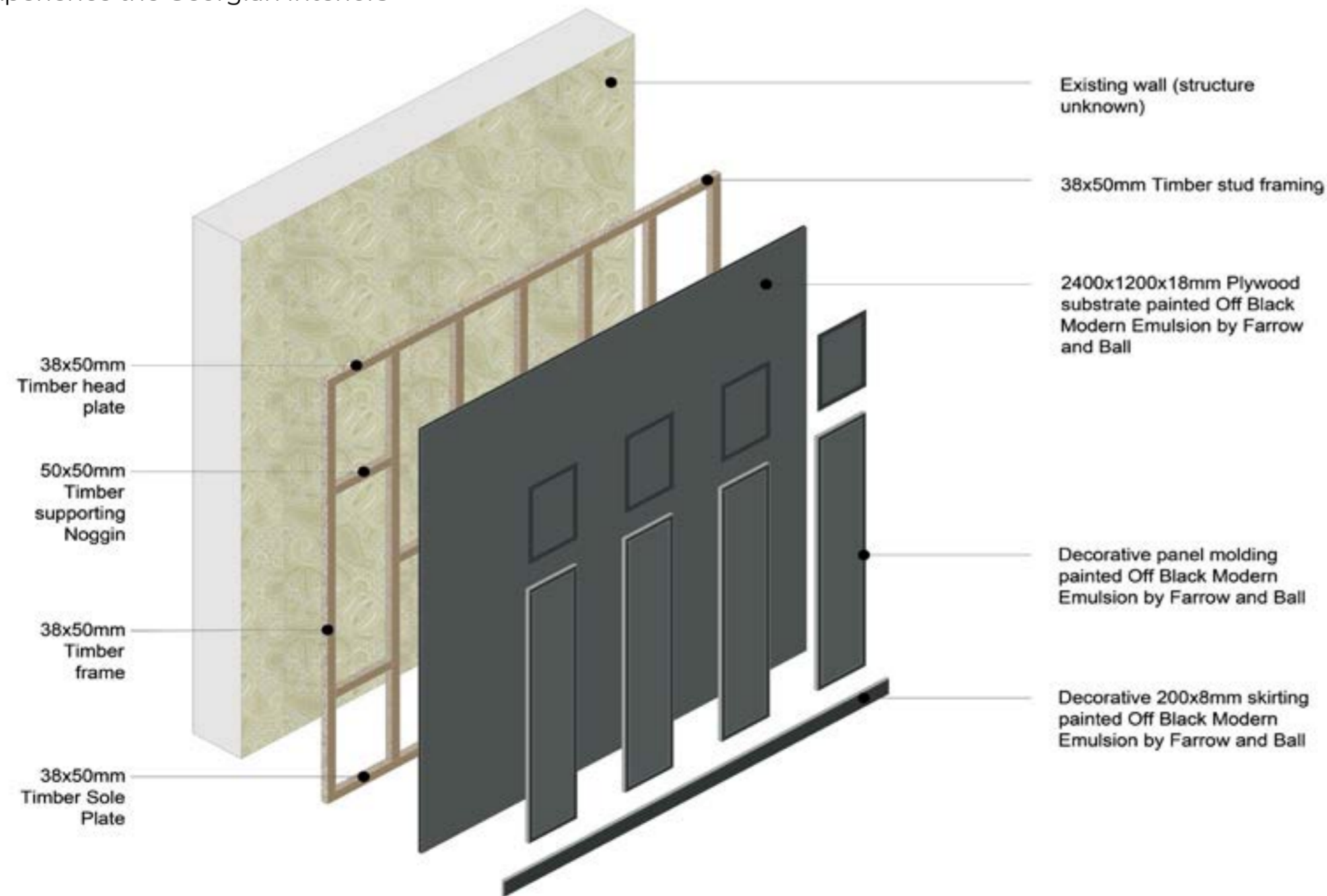
The Fabric VS the ... Space



The Conservation

Conservation is traditionally guided by **preservation of material**. The fabric that creates the space is the artefact conserved. Reasons for conserving the artefact are **normally cultural**, not down to the merit of the artefact but down to the history behind it.

The intention of the project is to restore the existing material to allow future users to experience the Georgian interiors



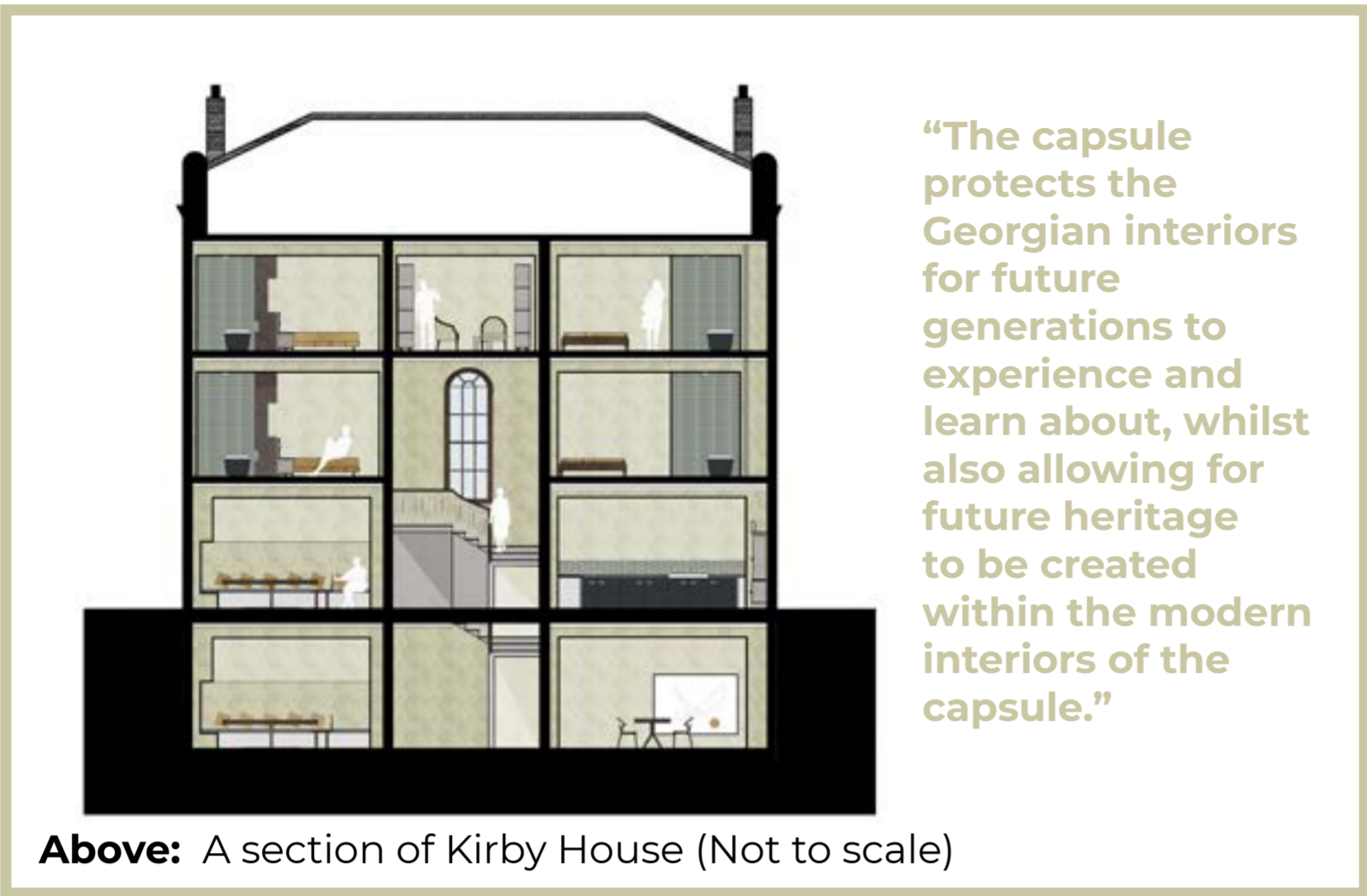
The Materiality

The Materials board consists of Georgian wallpaper that restores the **layer of Georgian heritage** to the building that was removed during previous renovations. **A new layer of heritage** is added with Modern materials such as tiles that are in a complimentary green to the Georgian wallpaper.



Above: A perspective section shows the relationship between kitchen and dining room.

A new layer of heritage is added to Kirby House, meanwhile the existing features are restored for future generations to enjoy.



Above: A visual depicts the materiality of the bedrooms.

The Plans

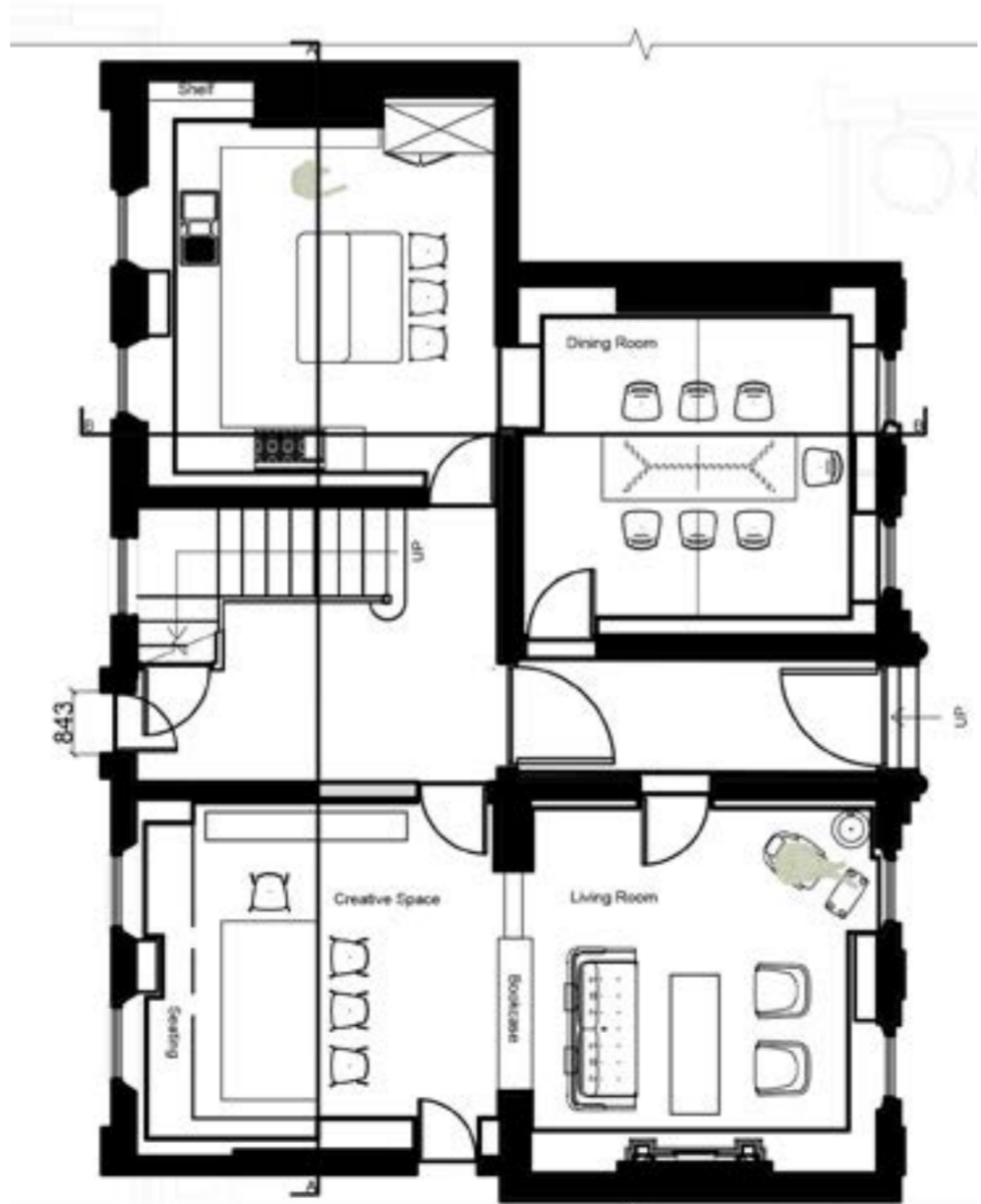
The **Vacuum protects the existing materials**, whilst also articulating which areas of the restored Georgian Building are visible to the Modern User. **Materials are restored** so that knowledge about the Georgian Era can be experienced by future Users, meanwhile a **new layer of heritage is added to the building** representing today.

Basement:



Scale 1:100

Ground Floor:



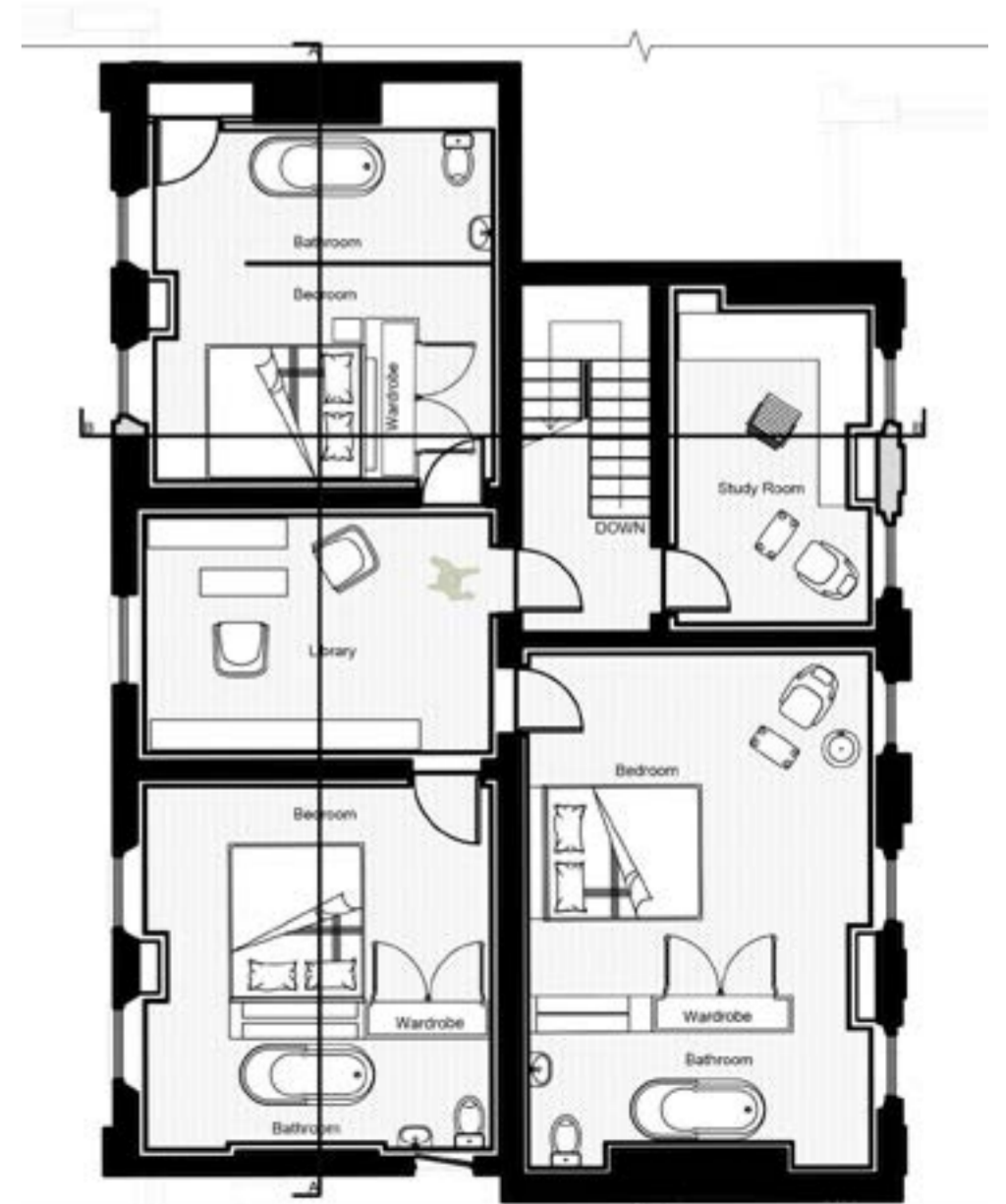
Scale 1:100

First Floor:



Scale 1:100

Second Floor:



Scale 1:100



Link to Project Video:

<https://www.youtube.com/watch?v=A0LAJKnO1OU&t=1s>