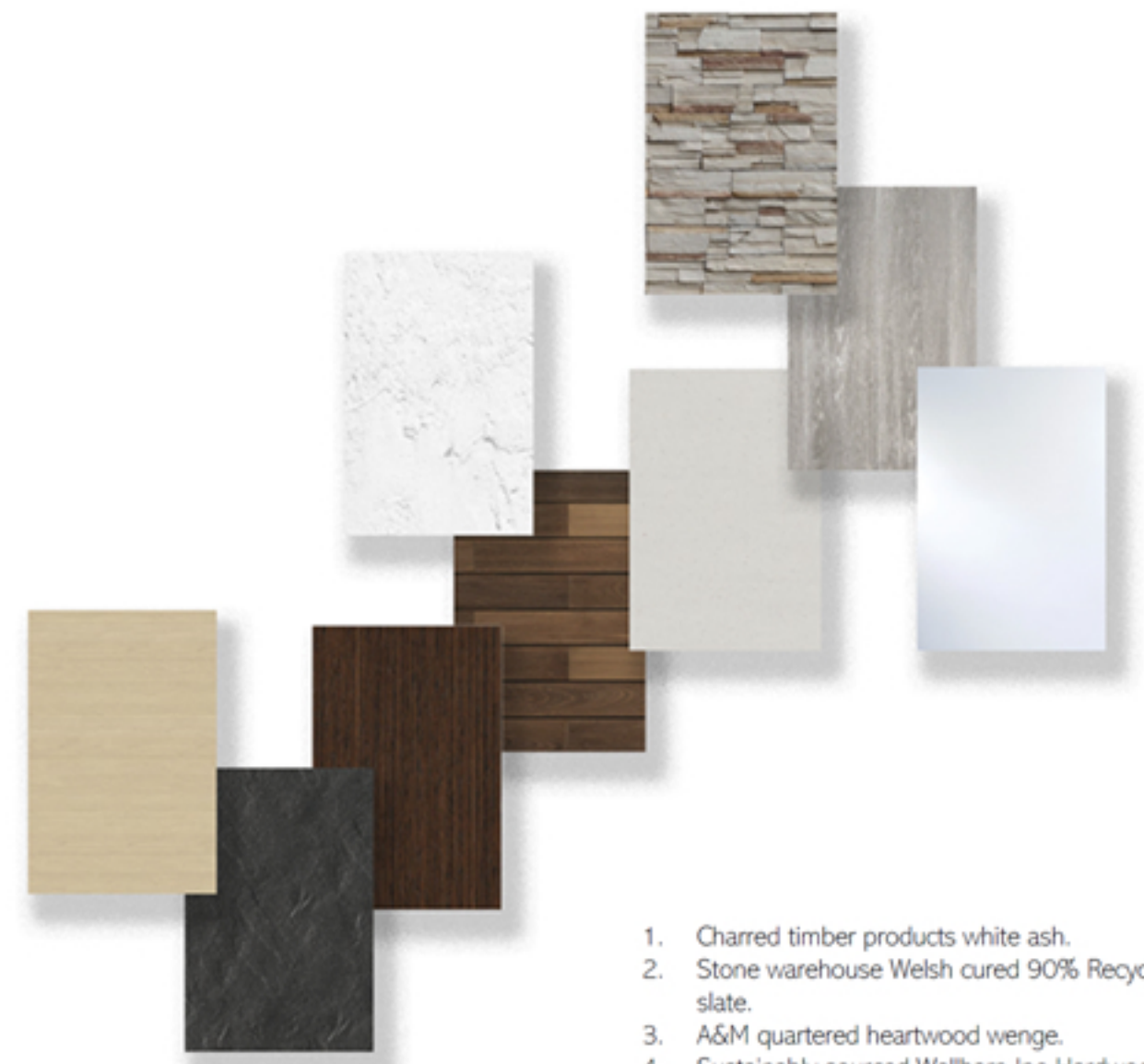




5 WARWICK ROW

TOMORROW SMART HOUSE TODAY





1. Charred timber products white ash.
2. Stone warehouse Welsh cured 90% Recycled chipped slate.
3. A&M quartered heartwood wenge.
4. Sustainably sourced Wallbarn lpe Hardwood Timber.
5. Stone contact Doric white stone.
6. Toupret fine finished stucco white plaster.
7. Zclad interior natural stacked slate stone.
8. Eco-friendly strand woven bamboo flooring (Cherry wood finish – slate grey.) by QTS.
9. Recycled glassware co. Reclaimed site glass.

TOMORROWS SMART HOUSE TODAY

A HOUSE CONTROLLED BY YOU

HIGH DEMAND

The site has been developed in direct response to the need for more residential housing in an area with business and other commercial properties with little to no direct housing available for workers.

Designed with multiple apartment size options ranging from single units to larger family style four-person occupancy options. Designed to run from a smartphone the apartments can be optimized to the user's preference creating a bespoke timeless experience within a flexible environment echoing the principals of Le Corbusier and Pierre Jeanneret's Weissenhof and influenced by Gerrit Rietveld - Rietveld Schröder House.

The area falls into mainly two categories - hospitality and mechanical services. High demand jobs that require constant staff.

Continuing with the theme of sustainability and recycling. The site's demographic will focus on these two sectors specifically as there will always be a flow of workers needing to be trained in these fields and require subsequent housing.

When the current shift moves on new workers will need to move in to fill the local gaps in these fields and so on as the cycle continues. Providing a constant sustainable stream of clients needing local housing.



- Local enterprises
- Site
- High demand local enterprises

The cafe at the box
Kahawa cafe

Open doors

HMS Cupcake, The backyard pub
company & Myton restaurant

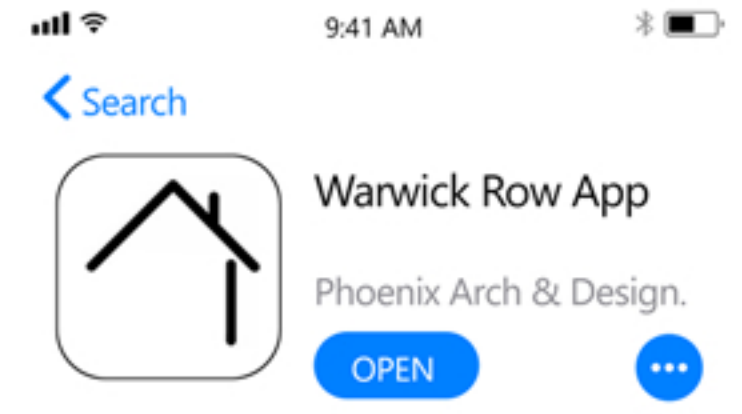
Road and race performance

4 Wheels driving

FOOD AND DRINK
MECHANICAL

HOLD THE KEY

TOMORROWS SMART HOUSE TODAY
A HOUSE
CONTROLLED BY YOU



The concept is to create a smart house fully integrated into a seamless modern, all accessible, controllable and modifiable from a users smart phone. Utilizing a preexisting object instead of creating something new allows for a more familiar concept and the nullification of waist.

The Warwick row series of smart apartments contain within several smart functions that could help create a technological rhythm to lead to a better healthier life for the occupant through technology. Enhanced by the smart house itself.



HOLD THE KEY
SIMULATED APP

SUPPORTED



<https://xd.adobe.com/view/1f34856d-5048-44ae-84d4-4cec56edeb96-4a67/>



HOLD THE KEY
APP AND LINKED MODEL

SUPPORTED



<https://xd.adobe.com/view/65d344b6-eeb9-4a6a-948e-0c596583bf75-3080/?fullscreen&hints=off>

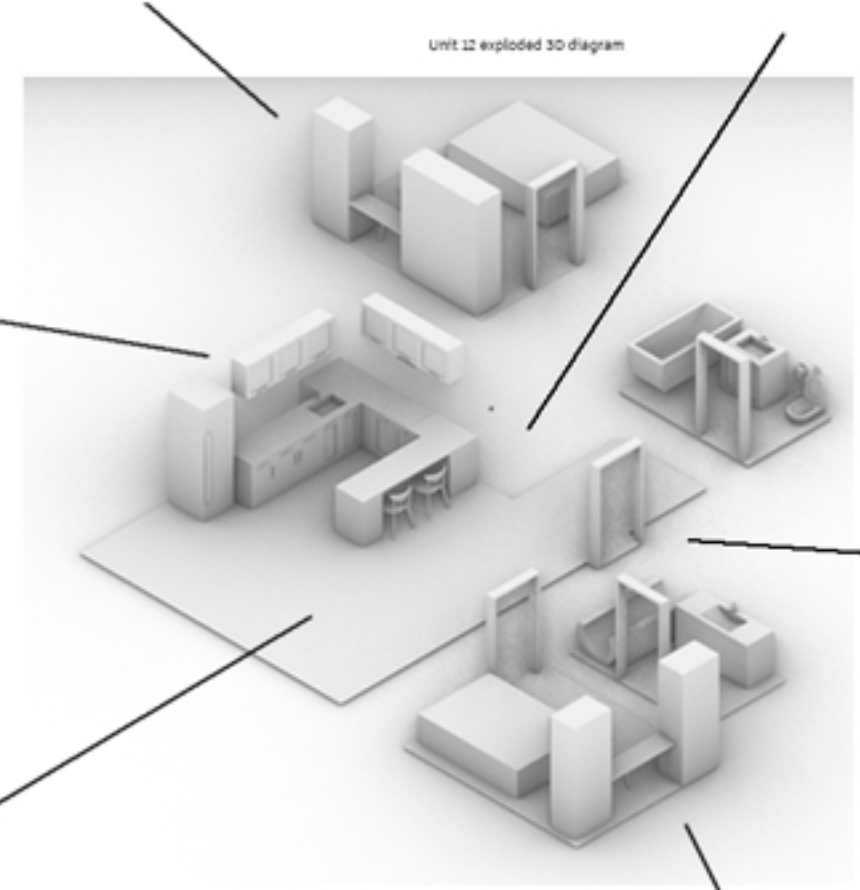
App with linked model is available on the latest smart phone devices as well as PC ports however videos are disabled on smart phone devices due to the processing power required to run the simulation.

Kitchen
In addition to standard lighting, pre heating the oven / slow roasting via pre set timers can be set up. Smart water sensors limit water waist following the sustainability pledge of the design with "itinerary" keeping stock of items in the fridge / freezer alerting you when items depleted.



Bedroom
The bedroom tech is to aid as part of a routine in accordance with the users schedule. With controllable lighting options entertainment and comfort.

Home server
The site function from a local relay point. All units are fitted with local servers that act as the brain in each unit, collating all the information at one local point to be controlled, from the user or via the app.



Lounge
TV and sound systems can be turned on / off by the home system; Coupled with blinds to complete a cinematic experience the smart systems can be grouped to create a sensory experience.



Bedroom 2
The bedroom tech is to aid as part of a routine in accordance with the users schedule. With controllable lighting options entertainment and comfort.



Bathroom
Reducing waist with smart taps and allowing water to be pre heated remotely as part of a users morning routine.

WELCOME HOME

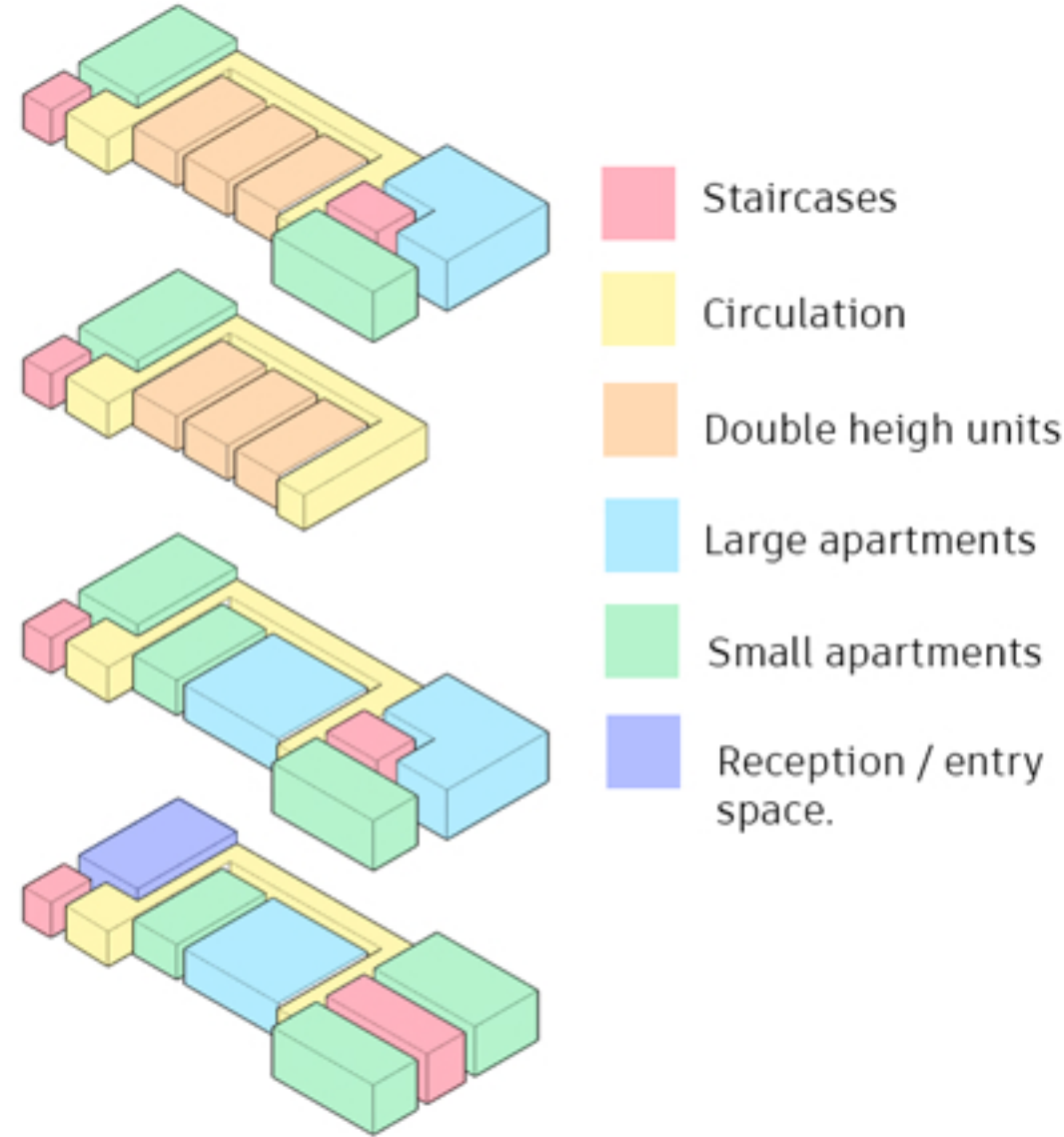
TOMORROWS SMART HOUSE TODAY

A HOUSE

CONTROLLED BY YOU

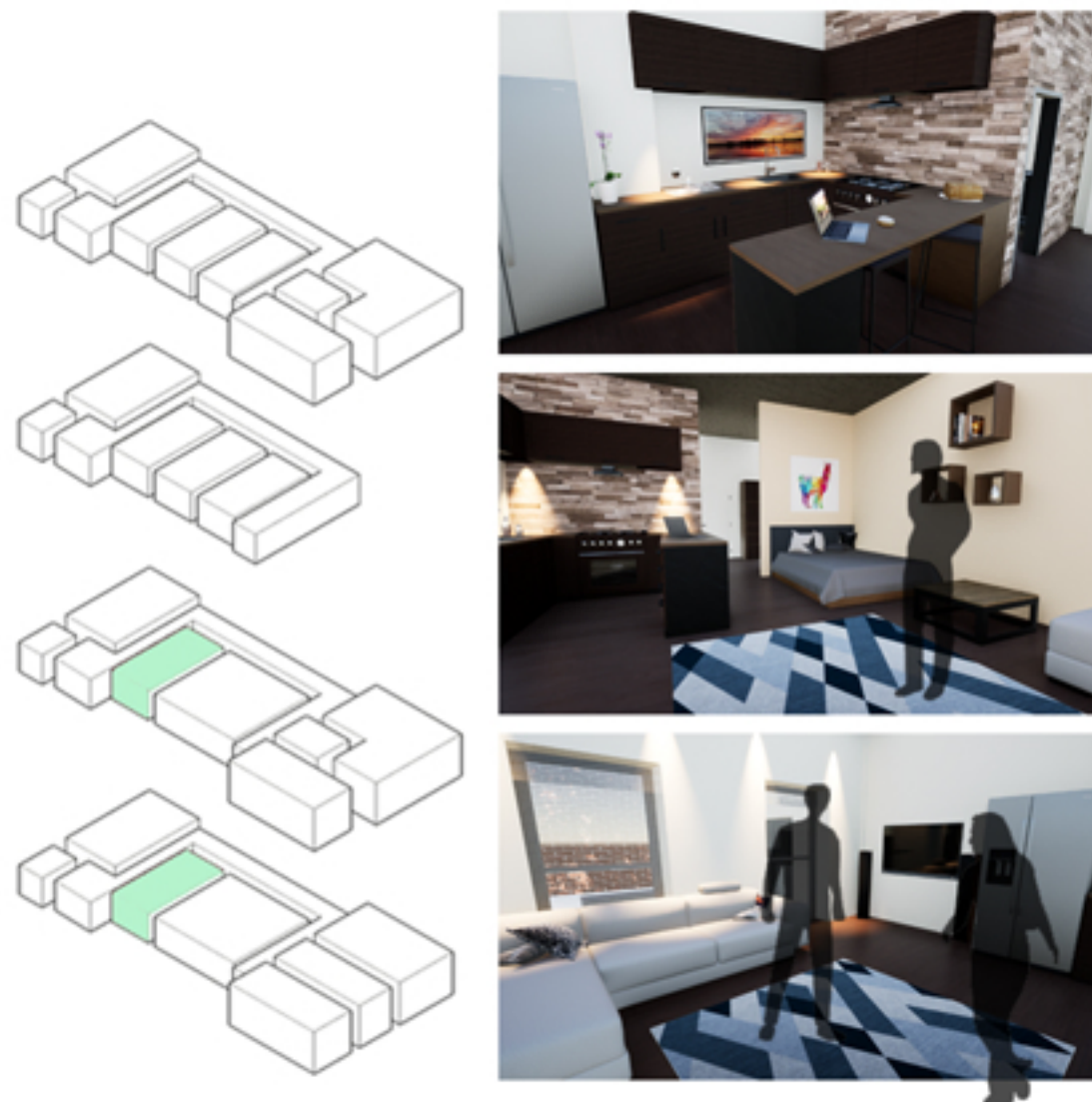


Mezzanine Plan as existing
Second Floor Plan as existing
Ground Floor Plan as existing
First Floor Plan as existing

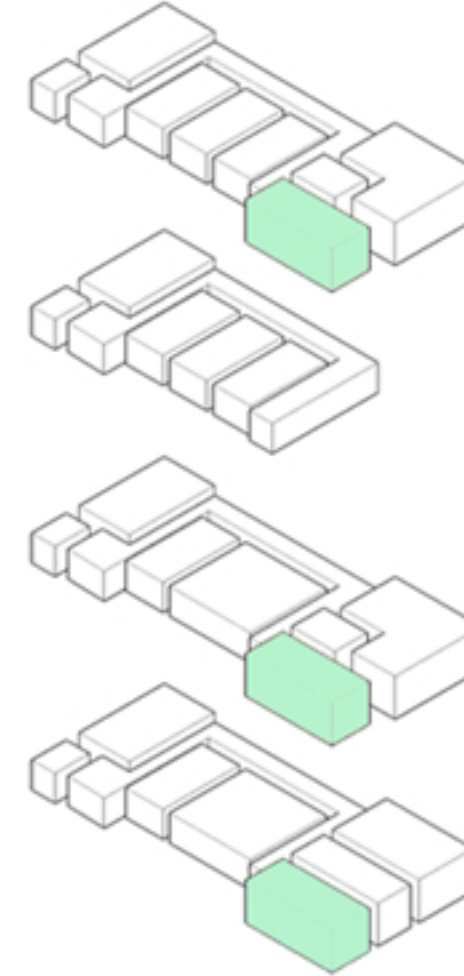


LONG SECTION (SINGLE UNIT.)

The ground floor single unit is designed around an open plan concept. Designed around the two large present floor to ceiling windows that transfer through much of the space. Out fitted with a spacious kitchen and living area, bathroom and a dedicated storage area with generous office space.

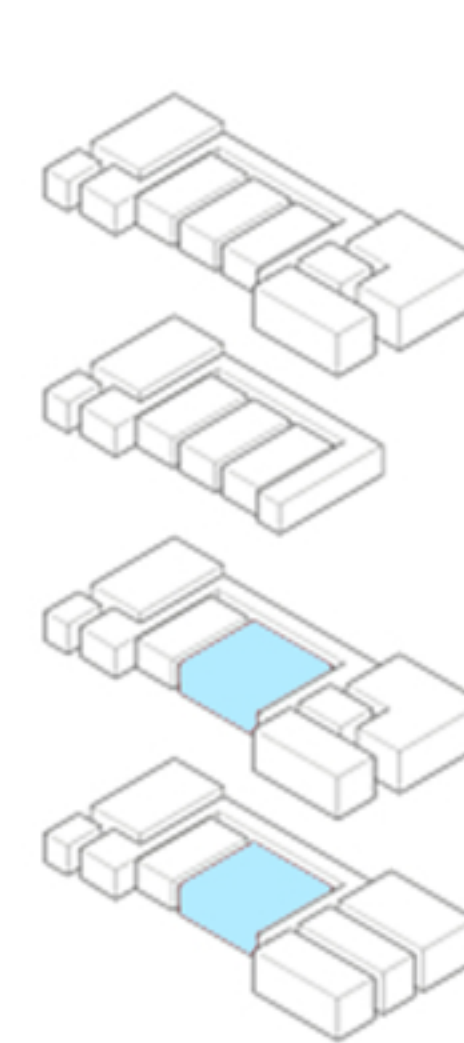


UNIT SHOWCASE



FRONT SECTION (LEFT.)

Developing the addition front space the section has been molded into a double unit featuring two double bedrooms, one at the front and the other at the rear of the space. Two bathrooms (One a private ensuite for the front bedroom and the other more for guest / general use.) again making use of the large pre existing windows and generous views.



LONG SECTION (DOUBLE UNIT.)

Designed as more of a family oriented unit the double unit available on the ground and first floors long section is the only unit to feature a stand out kitchen / dining room, two spacious double bedrooms, (One with an additional walk in.) two bathrooms and dedicated storage room. The design is spaciouly centred around the central living area core space with bedrooms, bathrooms and kitchen / dinning area brhancing off.

The dining / kitchen area is seperated by a curtain partition that can be closed / opened to allow forprivacy or open hosting.