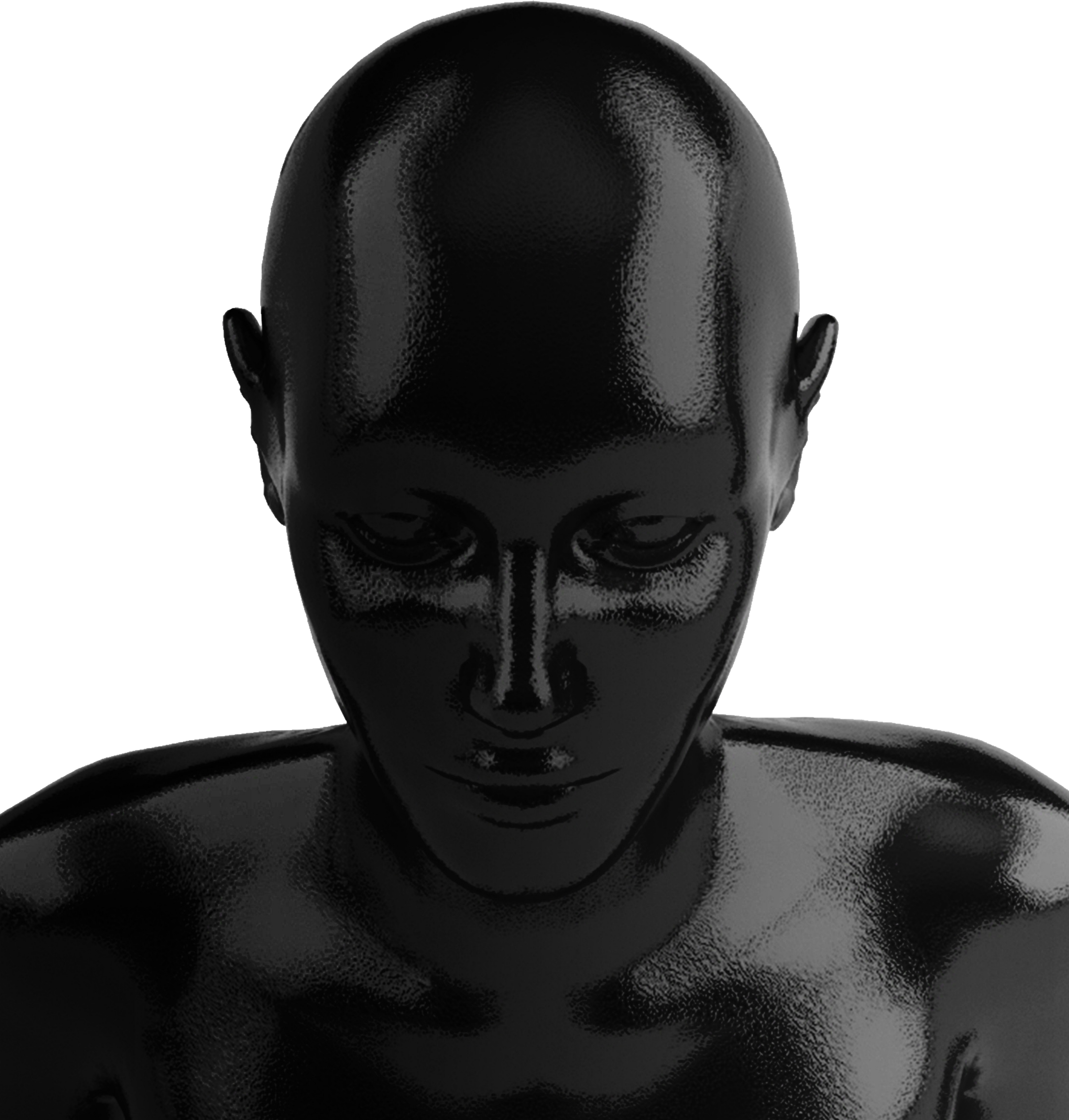


UTOPIA 0.2





UTOPIA 0.2

is an explorative concept project of what our near future might look like. The cyberpunk proposal aims to show how our environment , everyday life and body can change with the years that pass and the ever-evolving technology. The project is a design proposal for a futuristic laboratory for robots , that also incorporates open spaces for visitors.

The historical Victorian building, situated on New St., Birmingham , curently occupied by “ The Medicine Bakery ” will be set as the home to the new occupant.

The project will look into how we imagine the future today and what proposals that consider futuristic changes have been made. It explores everyday problems we face as a society , but also challenges them , to question the issues and how based on them our world could look completely different than what we are aiming for, really soon. What if what we are trying to fix, is actually what will ruin us? The project benefits by researching movies and other case studies that help create the setting of the dystopian future. It also allows the imagination to run wild , and removes the boundaries of the “normal”.

How do you imagine the future?



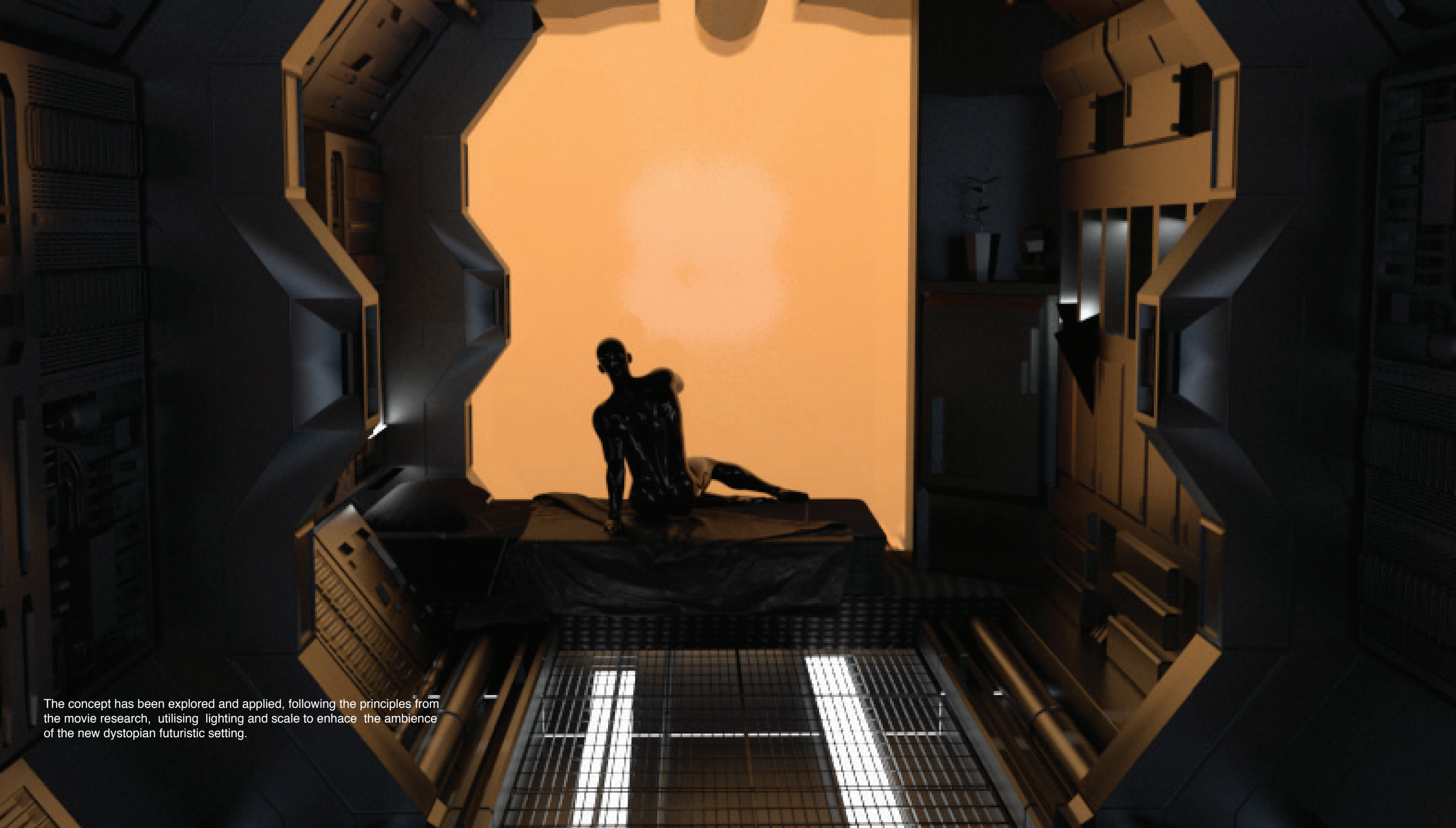
The project aims to show how even tho we plan , and try to save the environment , climate , and human race as a whole , we often neglect the bigger issues that we face in our everyday life. From loss of resources , famine , shortage of water, money and land , to overpopulation , racism , lighting pollution and even environmental racism these are some of the problems which are often left behind when it comes about saving the planet. With the technological advancement and consumption of electronic devices , now more than ever we have the power and knowledge to fix them. But that is an ideal case scenario. How would the world look like if we try and imagine those issues , in a couple of years ? What would happen if we continue doing what we are doing and how it could affect our future and future settings ? The project aims to show that the main reason for whatever awaits us , no matter , positive or negative , was all caused by the same power that looks for a change and solution to the problems caused just by that same power again - U.

The Utopia laboratory challenges the space ,to craft a habitat for the new man , the new inhabitant of the new world. It is a laboratory of the future, where robots - the main user are being made. The space also allows for the original inhabitant - the human, to be a part of the experience. With the growth of Artificial Intelligence - the project proposes a world where , they are integrated as part of the society and are just as equal, or maybe have even overpowered .

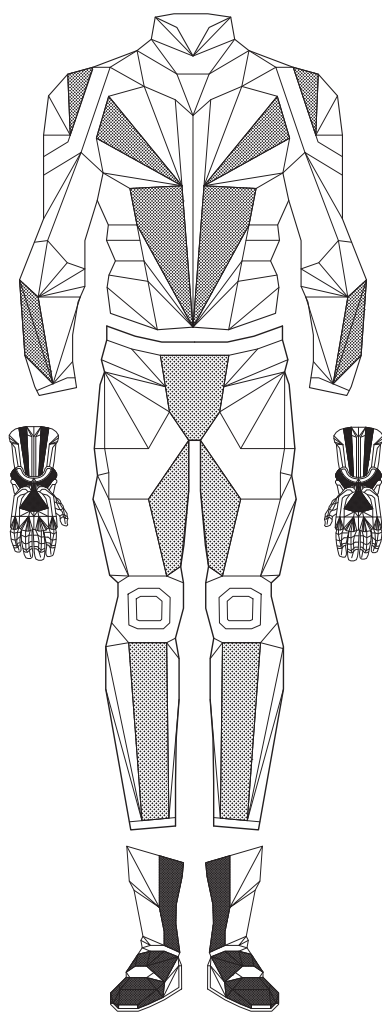
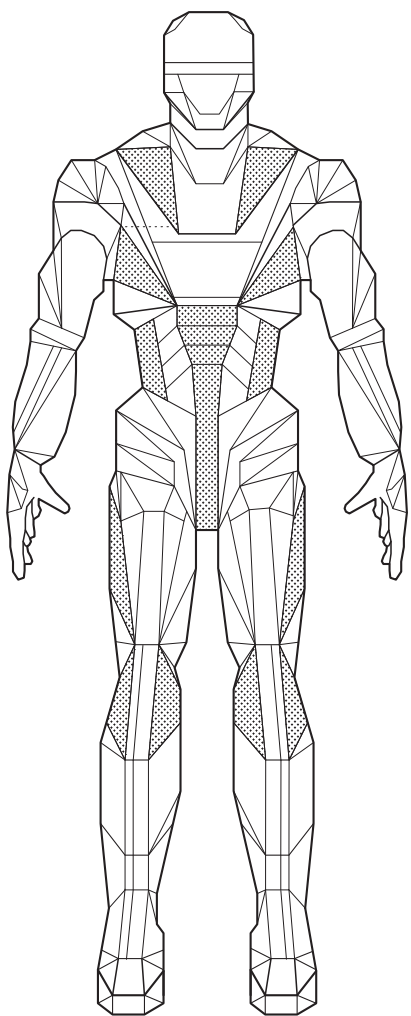
The project is led by a Science Fiction concept with main exploration being analysis of movies, with futuristic/dystopian narrative , such as "Blade Runner" , "Dune" , "I, robot" and many more. They will help set the basics and create the futuristic elements of Utopia.

ERROR ERROR ERROR





The concept has been explored and applied, following the principles from the movie research, utilising lighting and scale to enhance the ambience of the new dystopian futuristic setting.



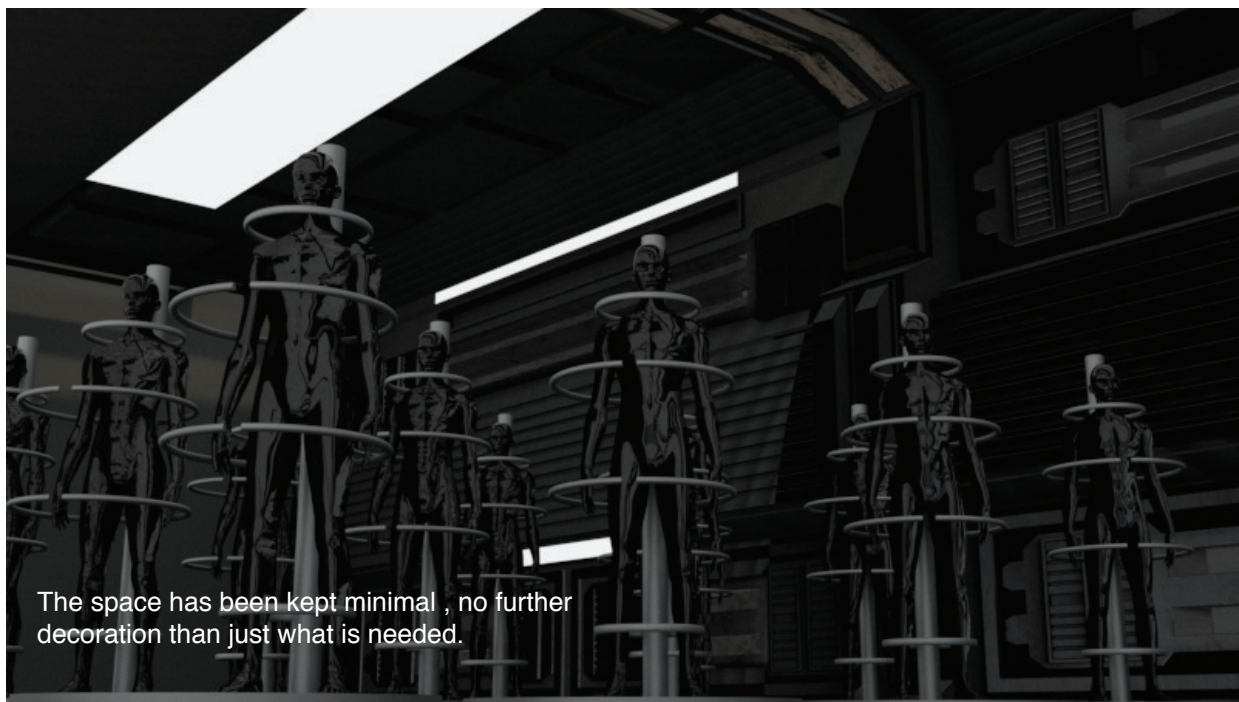
The new inhabitant has a human like body. The core body is protected by special layer of thermal smartwear, which adapts to different conditions. It also incorporates all the vitals to sustain the body of the robot ,for a very long time .



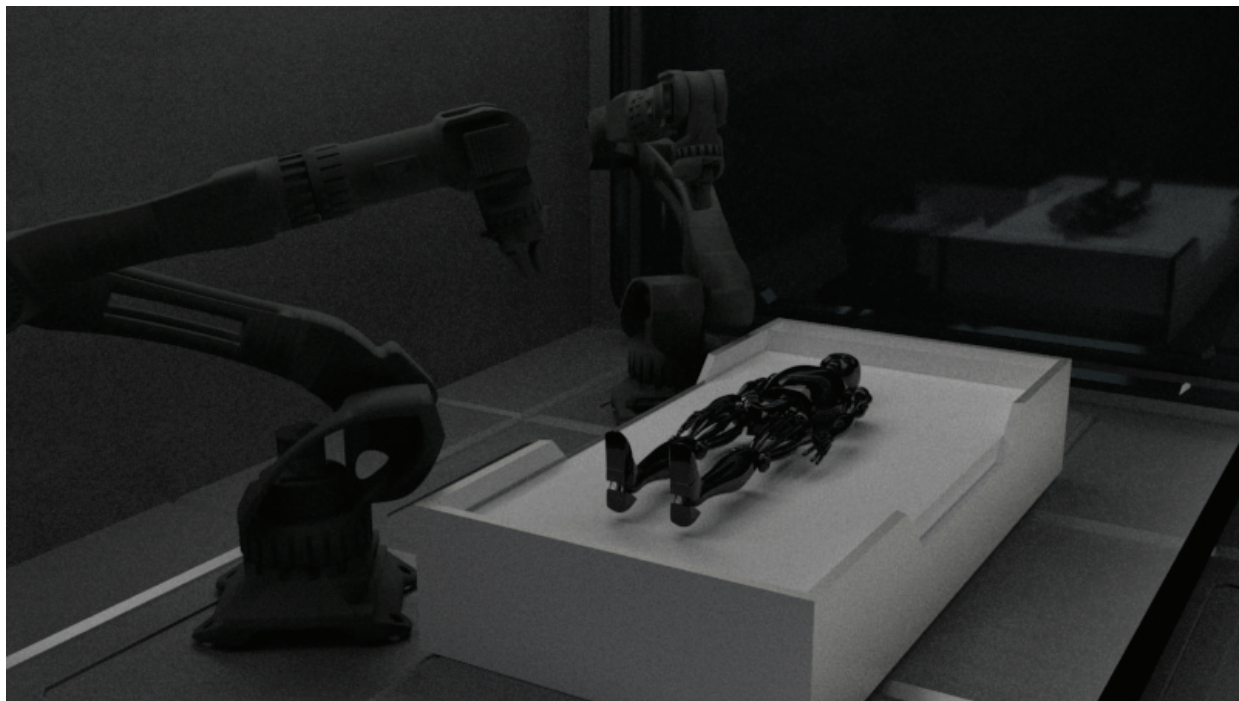
Breathing gear.



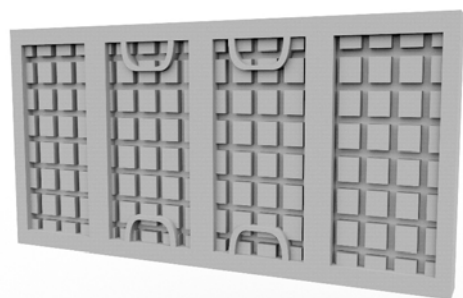
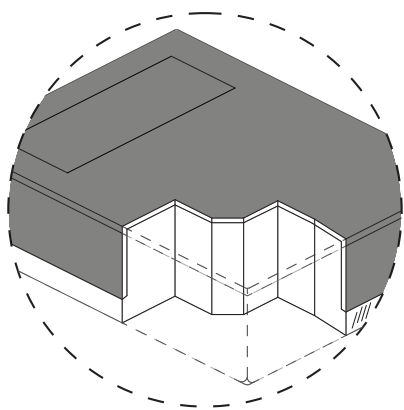
The new transportation.



The space has been kept minimal , no further decoration than just what is needed.



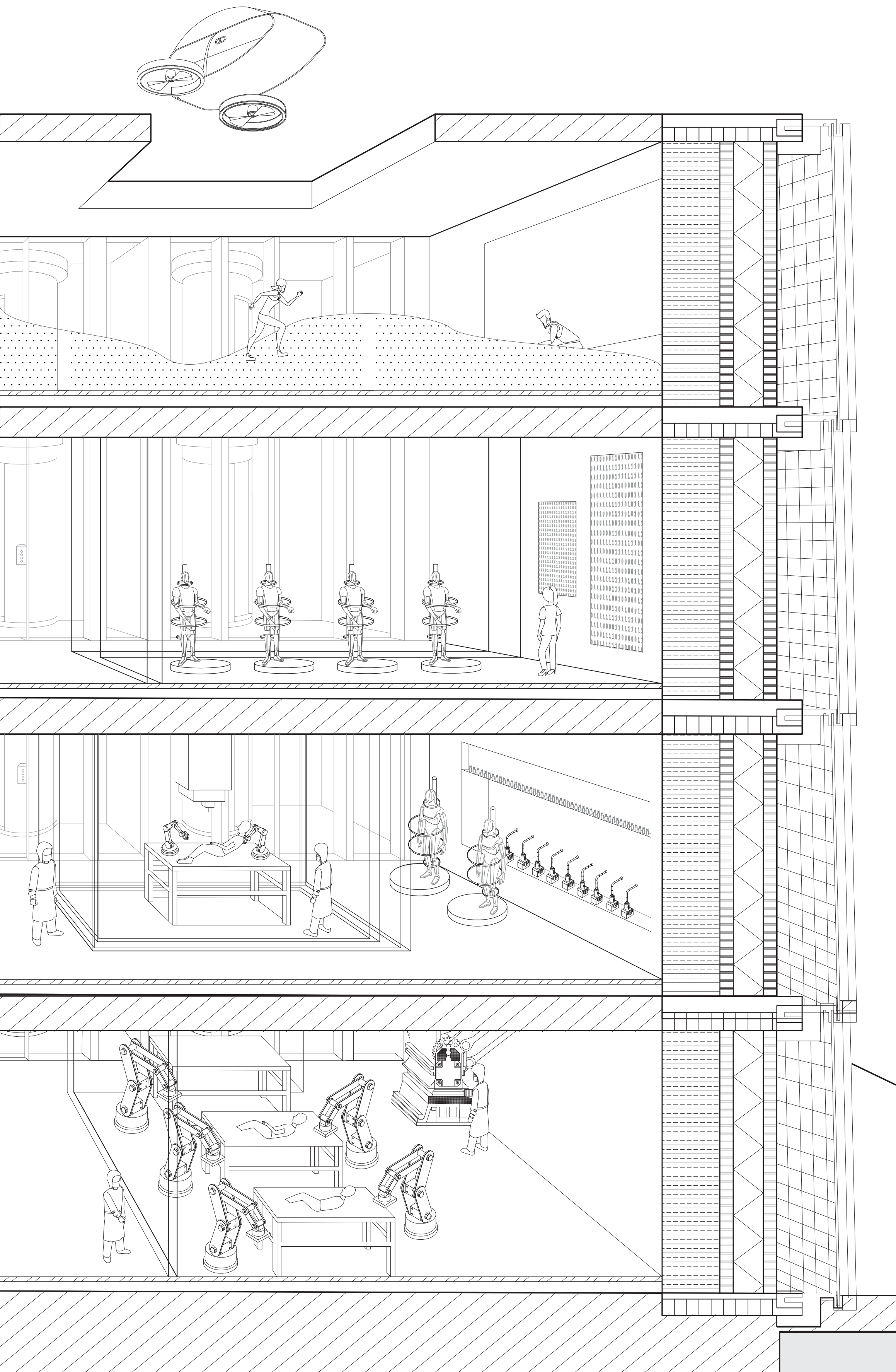
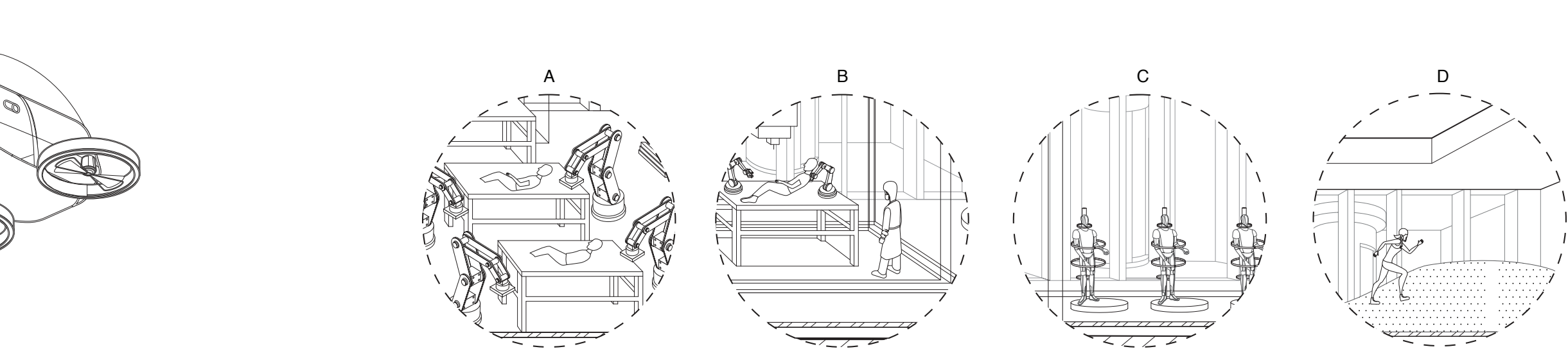
We did this to ourselves.



In order to follow the futuristic narrative throughout the whole project, materials have been chosen accordingly . The new environment requires new, unusual materials or new ways of sustaining already existing ones. I have specifically looked at SpaceX and NASA, to see how they manage to create a protection for different surfaces. Thermal protection tiles, are the main protective barrier that can be used to preserve materials through heat but also cold , which are conditions which might vary in the future. That is why i have included them as part of the new facade for the site.



The building as its own AI.



A

Ground floor laboratory - AI operated , with access for human staff. The area is separated to keep outside contamination or intruders to minimal.

B

Human operated laboratory , opened for visitors who want to bring in their AI robot for check up, or if they want an appointment about a new one, but also if an independent robot wants to go in for check up on their own.

C

Exhibition/Storage space for robots which have had their appointment or newly build ones. They are each sustained in their own pod.

D

Paradox space - the dunes, opened for both robot and human visitors. The space requires a special breathing gear for the human to enter. It also serves as a second entrance - the opening in the ceiling for the transportation of the future.

