

The Meadow

THE BRIEF

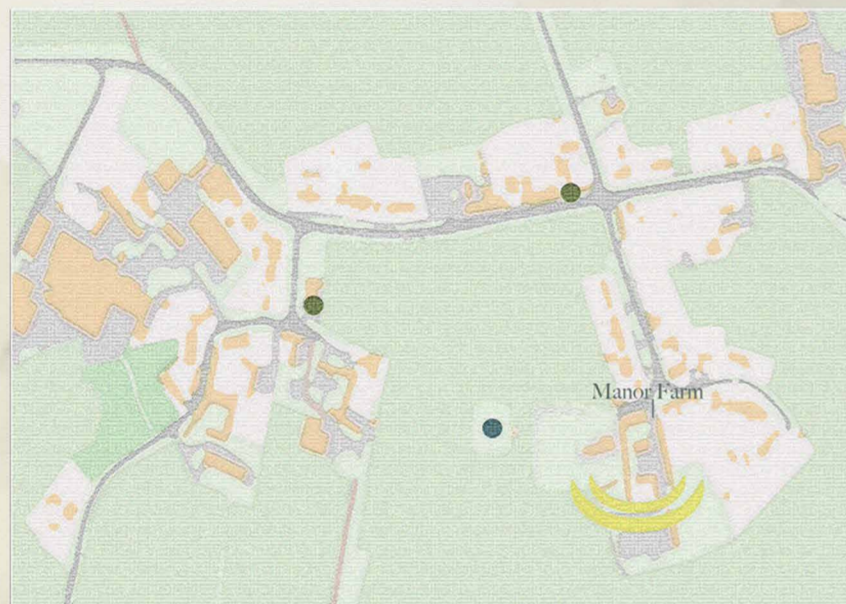
The Meadow is a scheme that addresses the challenge of accessing a mortgage by single parents. By creating a co-living sanctuary, The Meadow aims to act as an affordable and supportive form of alternative accommodation. Specifically designed to assess the needs of single parents and their children valuing their well-being, relationships with nature and support of one another. Inspiring single parents to empower one another and provide a stable space for them to thrive.

CO-LIVING

Co-Living is where multiple people live in homes, and share certain facilities and amenities. Often Co-living resorts are found in cities and act as a solution for the younger generation to accommodate them as they move out of their family homes.

THE SITE

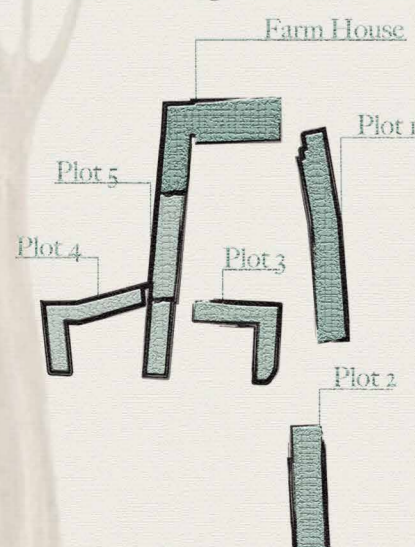
- Sports+ Education Facility
- Bus Stop
- ☾ Sunlight Path



DEMOGRAPHICS



MANOR FARM



I chose Manor Farm as my preferred location for a Co-Living space. My demographic findings revealed that East Yorkshire is highly populated with single parents. Surrounding the site are large fields, with full access to the field the farm is located on.

THE USER

Single Parents



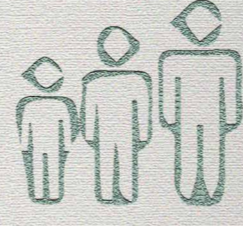
There are 1.8 million single parents that make 1/4 of families with dependant children



90% of single parents are women



1% of single parents are teenagers



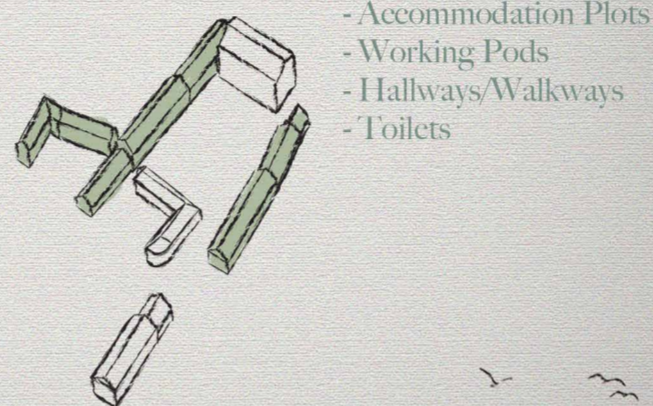
The average age of a single parent is 39

SCHEDULE OF ACCOMMODATION

Public Spaces



Private Spaces

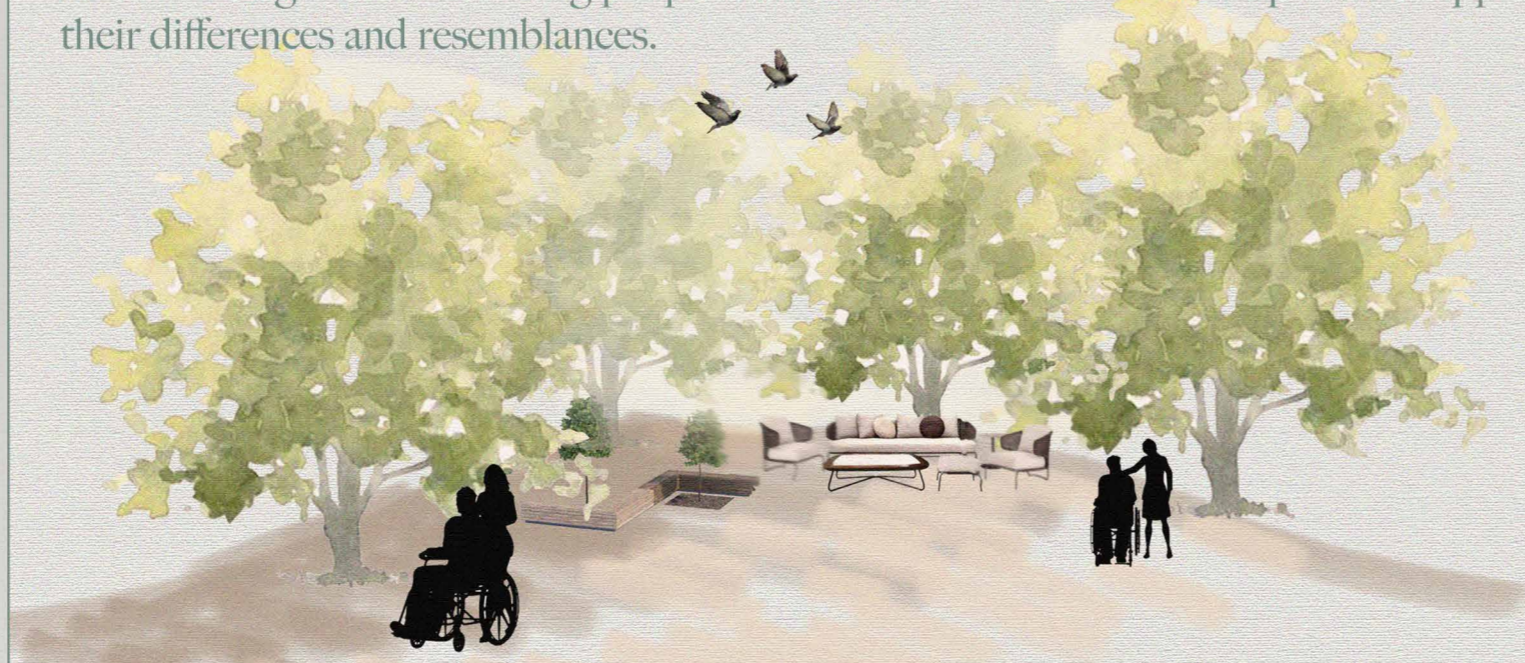


Mutualism concept image, "Mutualism: Nature's Interdependence"

SOCIAL INTERACTION

Interactive spaces are effective in developing a sense of community. Sociable spots often create community hotspots, and become areas that create a sense of belonging to the individuals living nearby.

Strong interaction spots create a genuine sense of community among individuals from various backgrounds. Bonding people from alternative walks of life helps others appreciate their differences and resemblances.



STYLE OBJECTIVES

Scandinavian Design

Functionality, simplicity, and minimalism are the three main characteristics that create Scandinavian design. Scandinavian design developed in the 20th century and originated from Denmark, Norway, Iceland, Sweden and Finland. The style of design became more popular during the two World Wars when designers began to popularize the modern trend.



Rustic Design

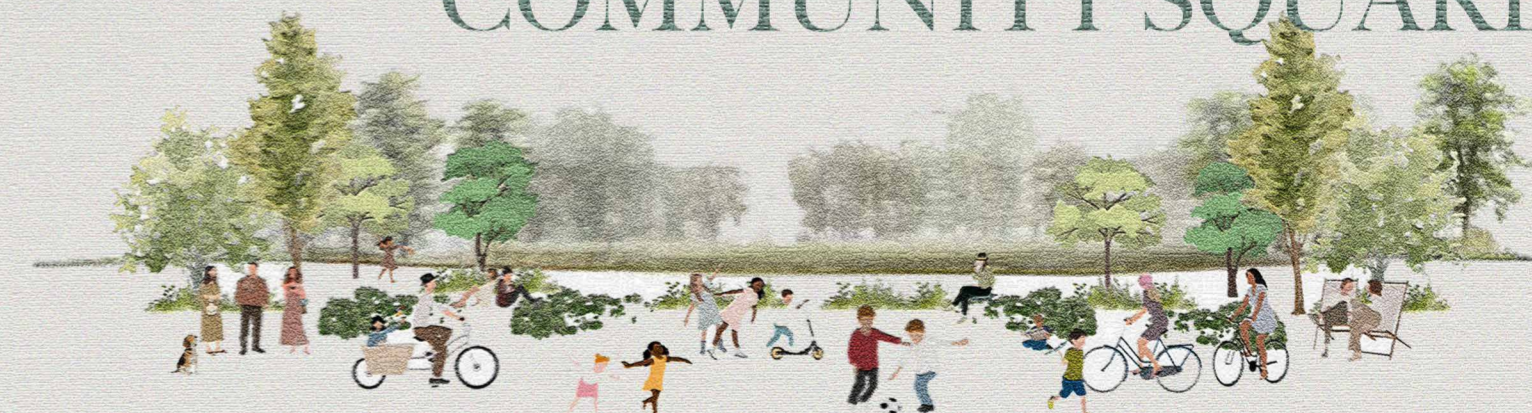
The rustic design emerged during the 19th century. The style was popular among homeowners living in the countryside who utilized their natural resources to create beautiful, practical interiors. Key elements of rustic design include exposed wooden beams, wide wooden plank flooring and open fireplaces. We now know rustic design as Rustic Modern. A style that combines rustic and contemporary aesthetics, leading to a softer version of rustic design.



MUTUALISM

Single parenting is often overlooked, yet it is a common feature in the animal kingdom. Many animals entrust groupmates with their newborns, resulting in better care for the offspring. This style of parenting is known as cooperative breeding. Alongside co-parenting, mutualism is another form of bonding where two participants rely on each other for survival, such as food or protection.

COMMUNITY SQUARE



Over the years and throughout history, individuals have bonded and formed communities centering around city and town squares, using them as a key gathering spot.

Facilitating social interaction and bringing people together is a crucial part of public squares, which is achieved through many features and components of the space.

Public squares are gathering spaces and not only do they bring people together, but also act as the perfect location for planned events, group meet-ups, and spaces to enjoy the outdoor surroundings and environment. The open layout facilitates the perfect area for social relations.

THE MEADOW



THE ATRIUM

The Atrium is an expansive space in Meadow Manor that connects both levels and welcomes visitors. An Olive Tree grows through an opening into the upper level, creating a grand, unified entrance.



THE BAR

The bar is a comfortable, inviting spot where both adults and children can relax and socialize with friends. Arched pods offer a private space for friends to gather, inspired by the natural arches and traditional features of the Farmhouse.



THE OFFICE

Designing the pods inspired me to create a detailed drawing to illustrate their use and emphasize the importance of optional seating in any space. The pod design isolates the work area for individuals while keeping it open within the space.



THE LAUNDRETTE

The Laundrette fosters natural interaction among visitors. Its abstract seating area, filled with greenery, offers a clean air space to sit and socialize while waiting for laundry.



First Floor Plan



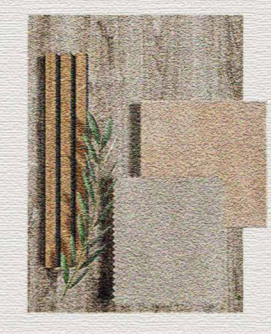
Ground Floor Plan

MATERIALITY MEADOW MANOR



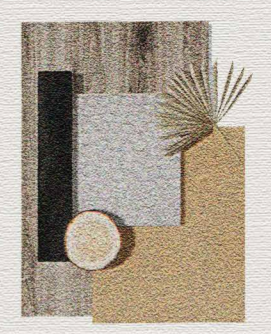
Limestone

The Farmhouse features prominent exposed limestone brick walls, adding texture and warmth to the space. These bricks, used in the atrium and around fireplaces, provide durability and excellent thermal properties, ensuring insulation throughout the seasons. This rustic modern design element enhances the cozy atmosphere, aligning with the concept of "hygge" and adding character to each room.



Neutral Tones + Clayworks

Neutral tones complement exposed wood and stone throughout the site, while Clayworks' textured clay products enhance the rustic feel. Clay's porous properties promote air purification and a spacious atmosphere, contributing to a cleaner, more open space.



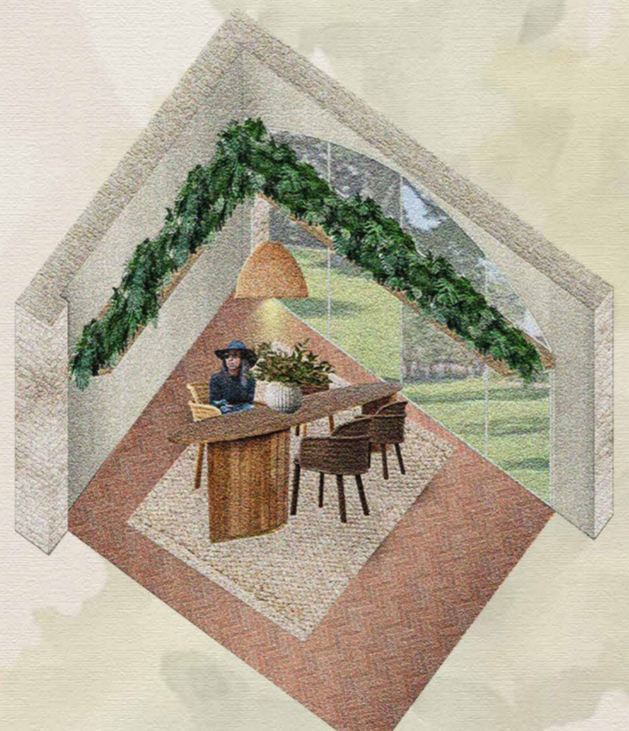
Oak Flooring

Oak wood flooring, chosen for its renewable and low-carbon properties, is used throughout the Farmhouse. As a durable material, it ensures longevity despite heavy use. Its natural aesthetic seamlessly blends with the rustic and Nordic design principles of the project. Wide planks contribute to the minimal design style, minimizing lines and strokes for a cohesive look.

STABLE & STOVE



Ground Floor Plan



STABLE & STOVE

Stable & Stove is an indoor-outdoor kitchen that features many amenities for both cooking and dining. The site is L-shaped, with one side dedicated to dining and the other to cooking. The space is divided into two areas: the kitchen stations and the dining area. The kitchen stations are designed for cooking and are available for use by anyone. The dining area is located near the outdoors, with large windows and open doors that allow the indoor space to connect with the community square outside. A private dining room is also available on the site. It can be used for workshops, large group dinners, or even for extended family members who want to visit and have a big family meal together.

MATERIALITY STABLE & STOVE



Plants:

Stable and Stove features a hanging shelf adorned with low-maintenance green plants, known for their positive impact on well-being. These plants not only enhance the design aesthetic but also boost concentration, creativity, and productivity according to research. They create a calming atmosphere and act as natural air purifiers, improving oxygen levels indoors.

Terracotta:

Terracotta flooring in the kitchen creates an indoor-outdoor feel, blending with the Scandinavian-Rustic design for warmth. Made from clay, terracotta production minimizes waste, recycles water and waste, and reuses heat energy, resulting in a low carbon footprint with 40% recycled materials.

ClayWorks:

The walls feature a panel-effect Clayworks print, creating a three-dimensional, textured look that enhances the rustic ambiance without distracting from other design elements. Clayworks, a manufacturer of beautiful clay wall finishes, uses highly sustainable, reusable, and biodegradable materials. These materials release no carbon when disposed of and contribute to a carbon-negative environment when reused.

LITTLE LAMB NURSERY



First Floor Plan

Ground Floor Plan



LITTLE LAMB NURSERY

The design of Little Lambs Nursery draws inspiration from alloparenting in animals, incorporating animal prints into its features. Play zones mimic cow prints, while a group seating area resembles a pigtail when viewed from above. Circular booth seating, crafted from oak with integrated storage, encourages older children to socialize. Arches, echoing external building features, create a welcoming atmosphere with individual benches for belongings, fostering a sense of security. Additionally, a sensory wall along one side introduces children to natural textures and animal prints, nurturing their bond with nature.

MATERIALITY LITTLE LAMB NURSERY



Carpet

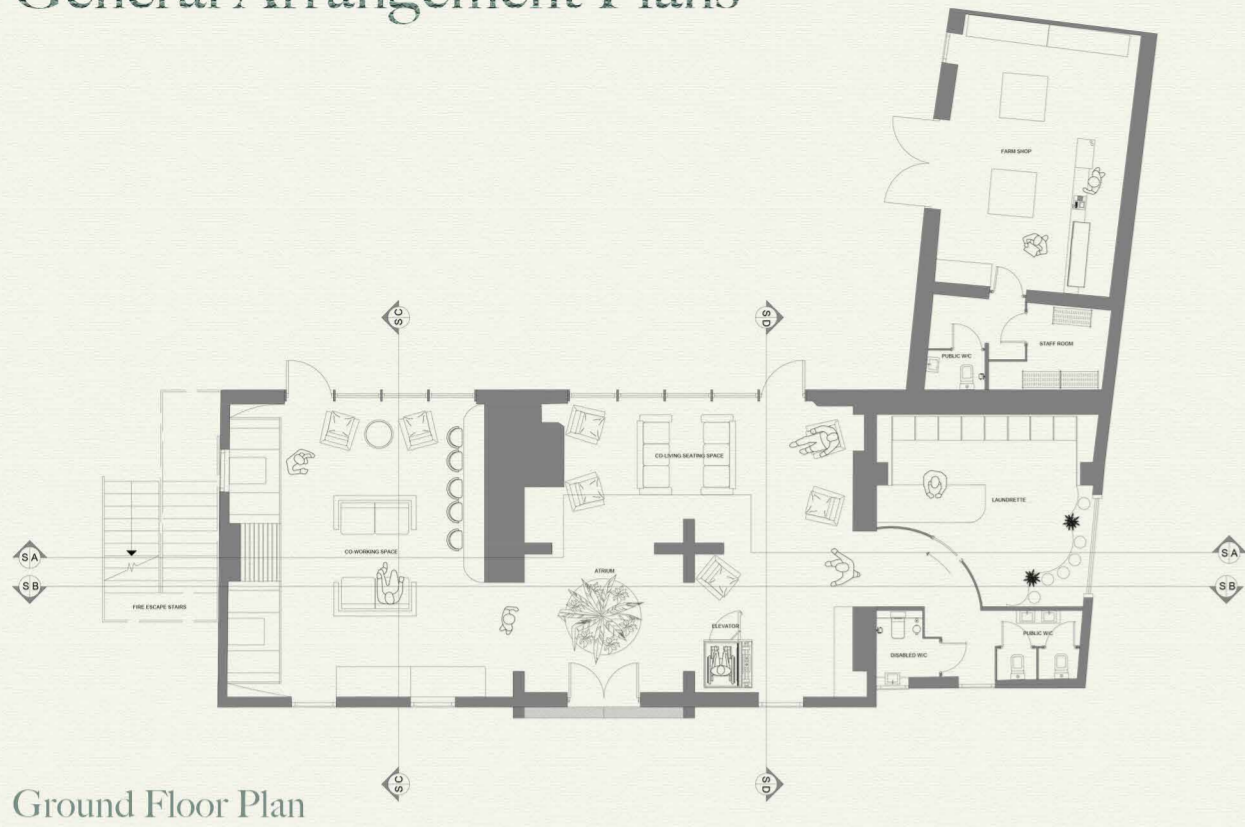
Soft, durable carpets like Cormar Carpets' Primo Ultra are essential for daycare centers, providing a safe and comfortable environment for children. These carpets cushion falls and bumps, are easy to clean, and trap dust and pollen, benefiting children with respiratory issues.

Clayworks

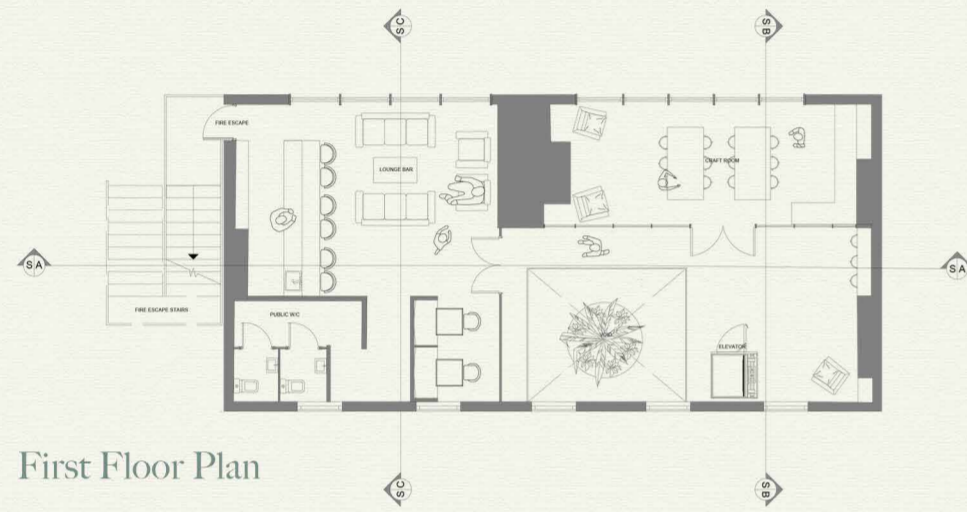
Clayworks materials enhance the natural connection in childcare facilities. Custom claywork blends seamlessly with outdoor surroundings, offering emotional and social benefits to children. Scenic displays, like a beach scene, create engaging spaces using natural-toned clay materials.

THE MEADOW

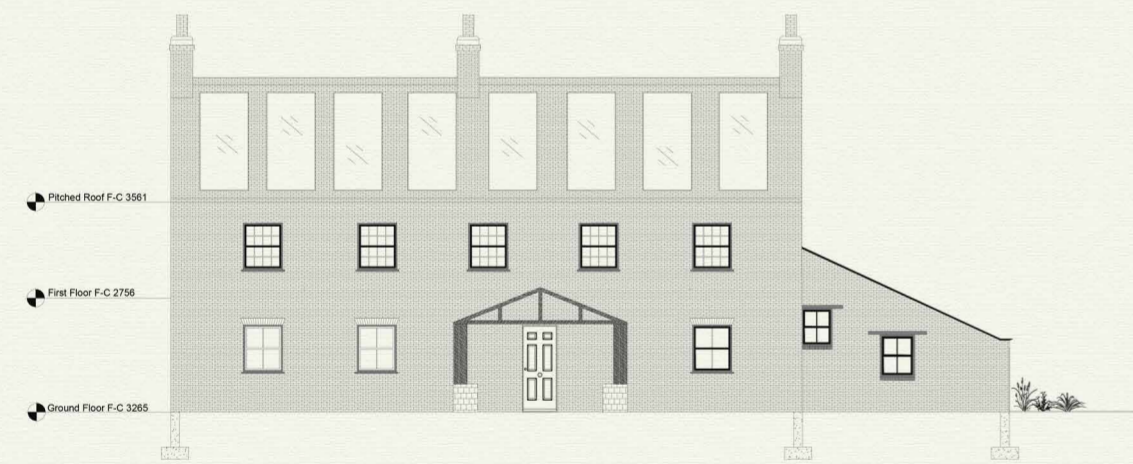
General Arrangement Plans



Ground Floor Plan



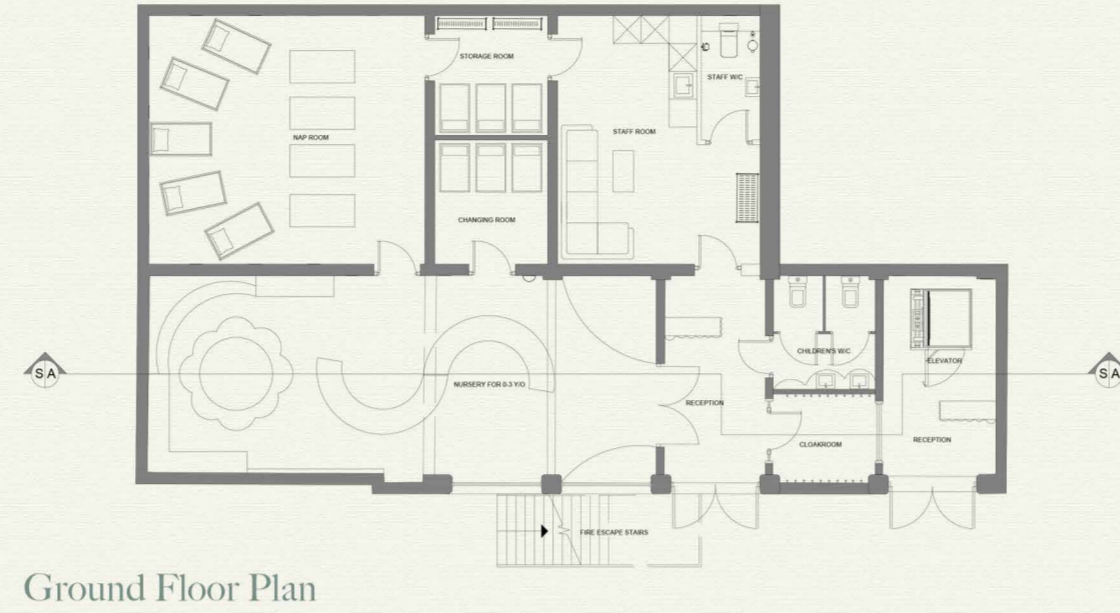
First Floor Plan



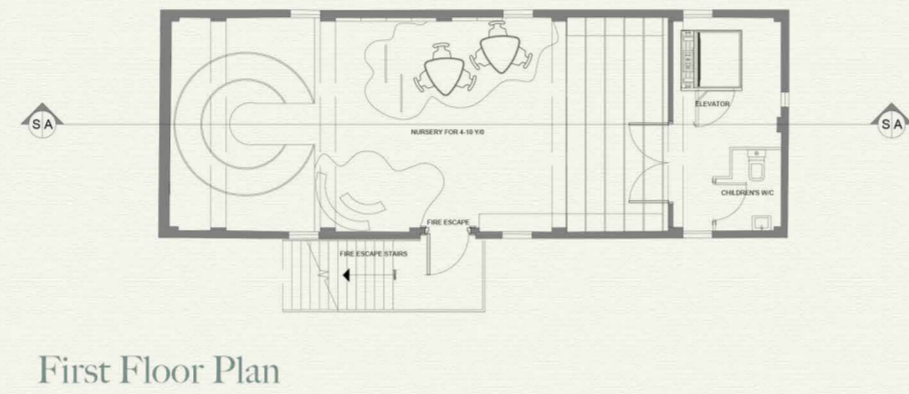
External Elevation

LITTLE LAMB NURSERY

General Arrangement Plans



Ground Floor Plan



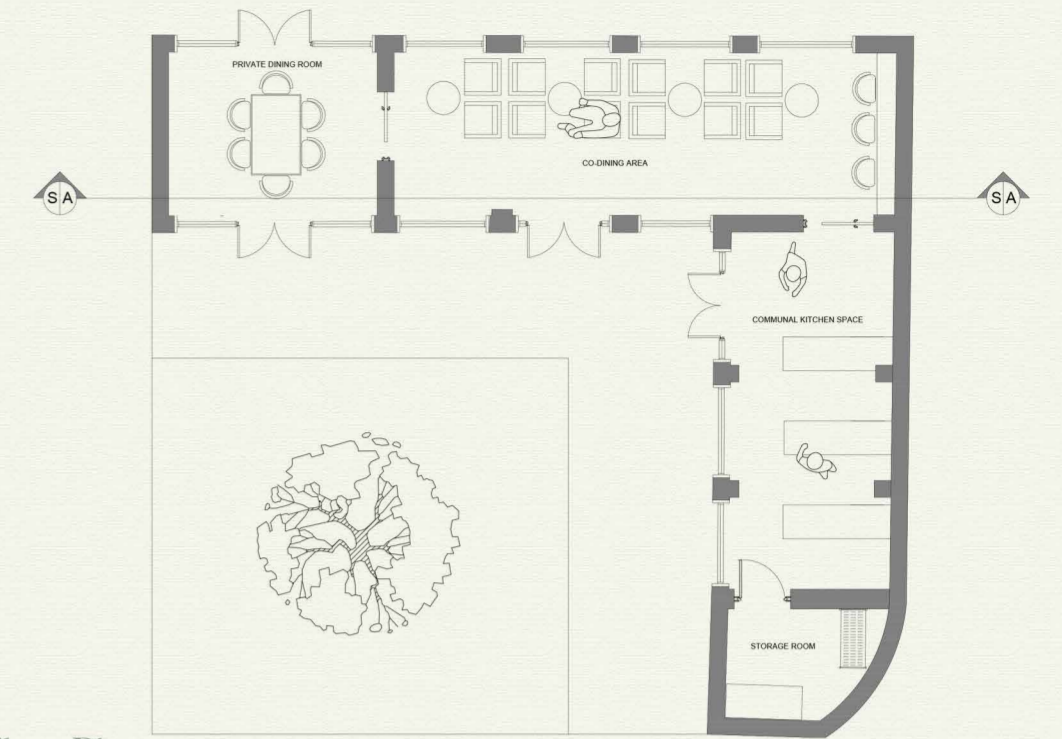
First Floor Plan



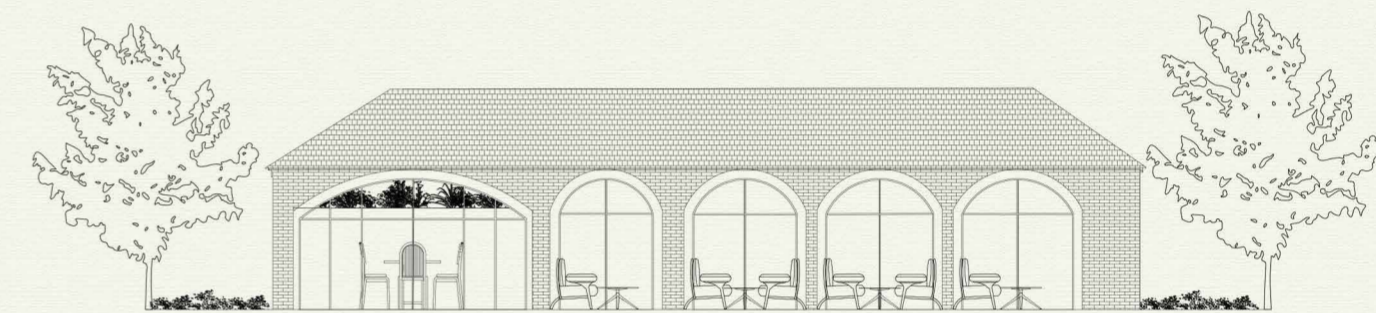
External Elevation

STABLE & STOVE

General Arrangement Plans



Ground Floor Plan



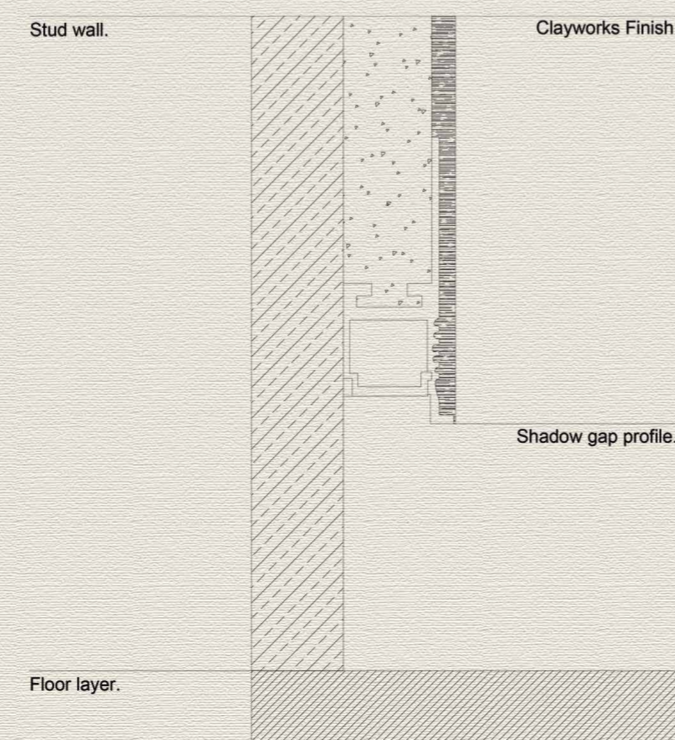
External Elevation

MATERIAL DETAILING

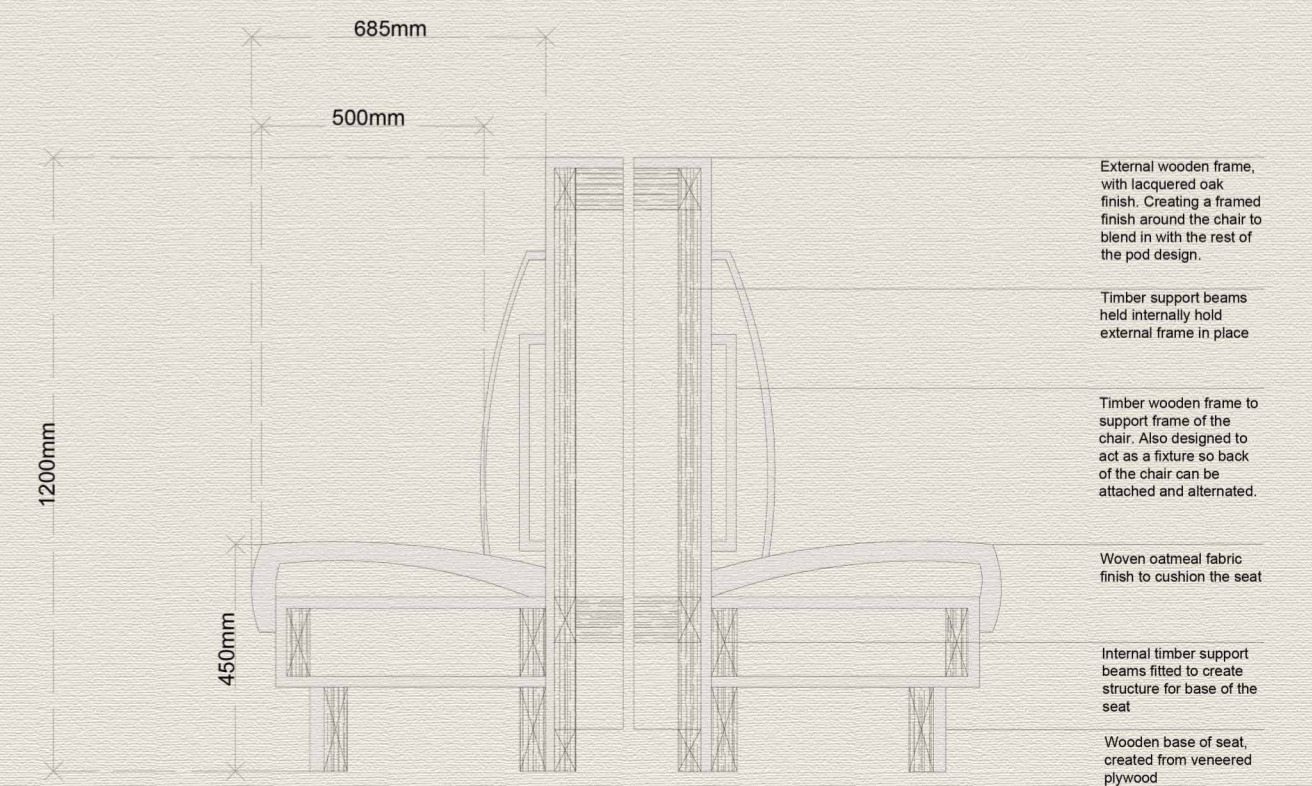
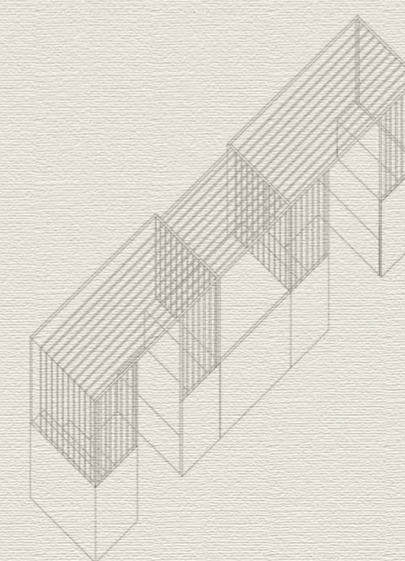
Material Detail



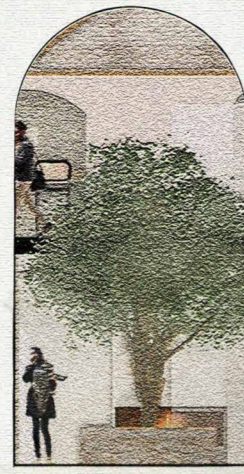
Shadow Gap Detail



SEATING DETAIL



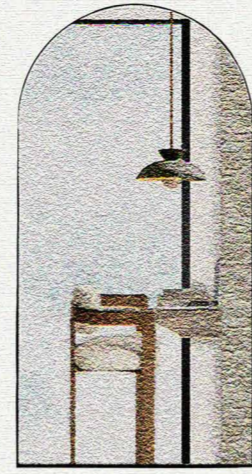
STORY BOARD



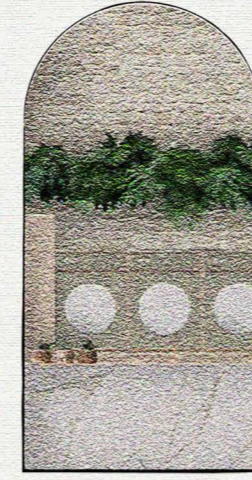
1. The Atrium



2. Living Room



3. The Office



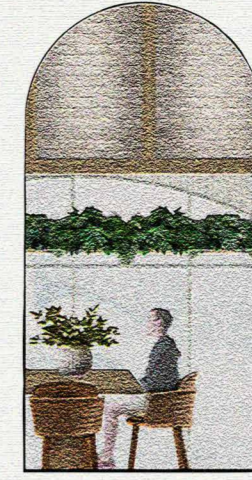
4. Laundrette



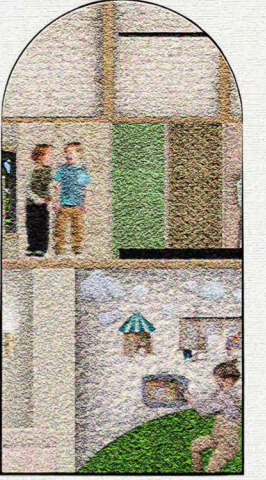
5. Craft Room



6. Bar/Restaurant



7. Stable & Stove



8. Little Lamb Nursery

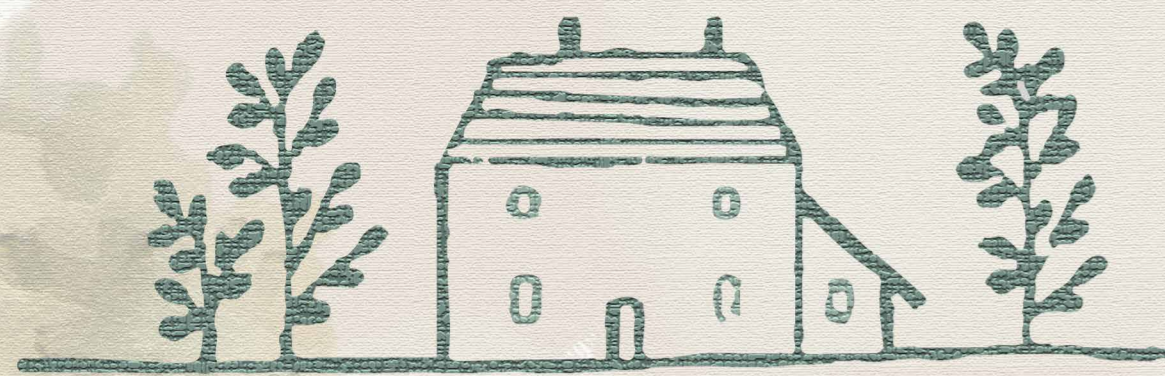
MEADOW MANOR



STABLE & STOVE

LITTLE LAMB NURSERY





The Meadow



MEADOW MANOR Key Interactions



My proposal is aimed to alleviate this stress and normalise single parenting, by creating a supportive space where individual parents can come together and learn to lean on one another. Not only does this provide a supportive network for the parent, but it also gives the child a fun, loving childhood experience that is not hindered by the common struggles single parents often face.

THE LAUNDRETTE



THE OFFICE



THE OFFICE Key Interactions

