



#### BRIEF:

In 2010, an operational standard was set by the UK government, stating that:

**'at least 95% of patients attending A&E, should be admitted, transferred or discharged within four hours.'**

As of 2024, data shows **only 69%** of patients meet this target\*.

In response to this, **Manor Farm Community Hospital** is a sustainable approach using a modular concept, to **give new life to disused agricultural buildings**, as agricultural practices and the rural economy continue to change.

Driven by my **passion for creating healthy communities**, this project is designed with the **daily act of movement as the basis for the optimal healing process** and healthy rehabilitation.

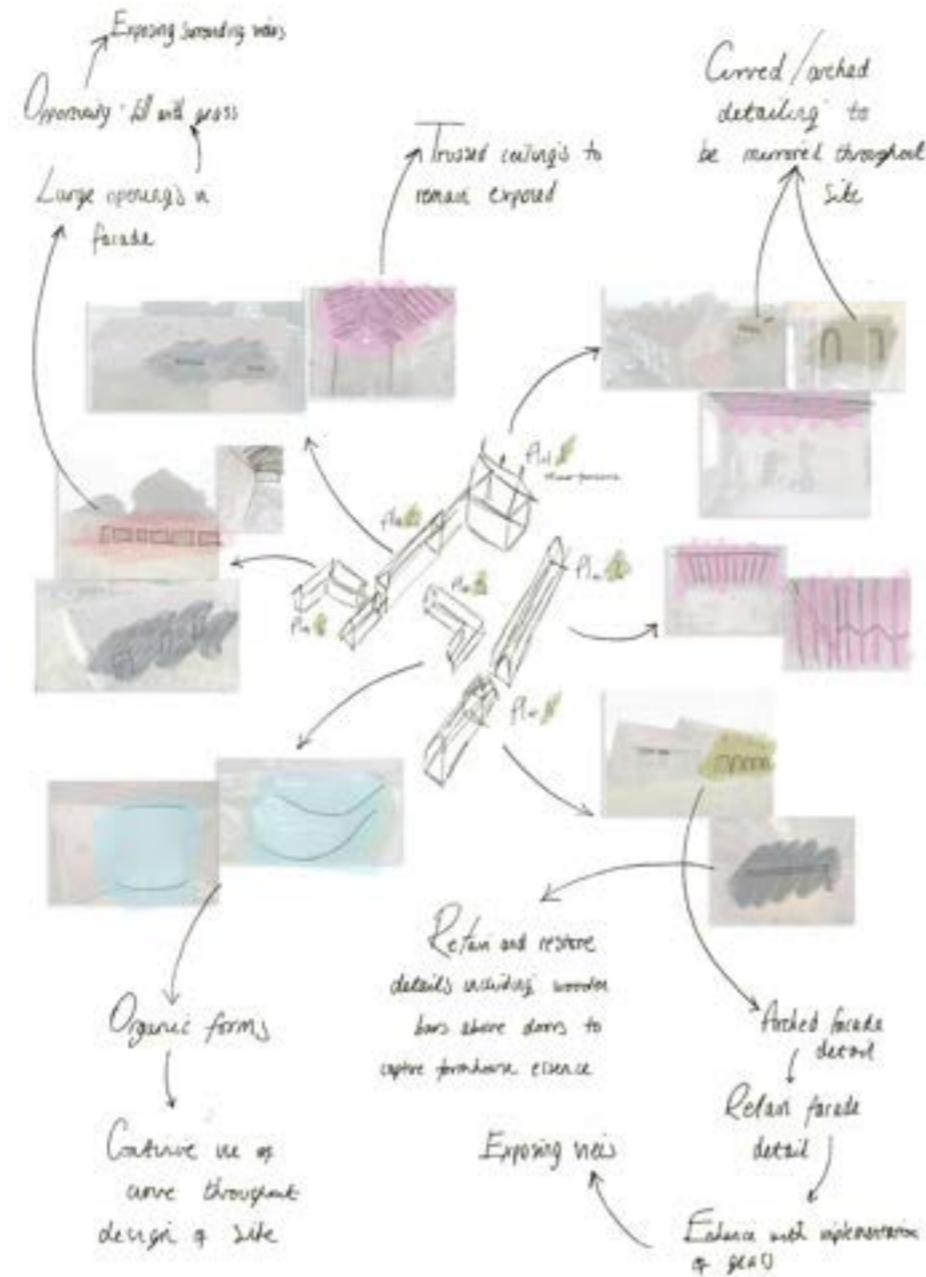
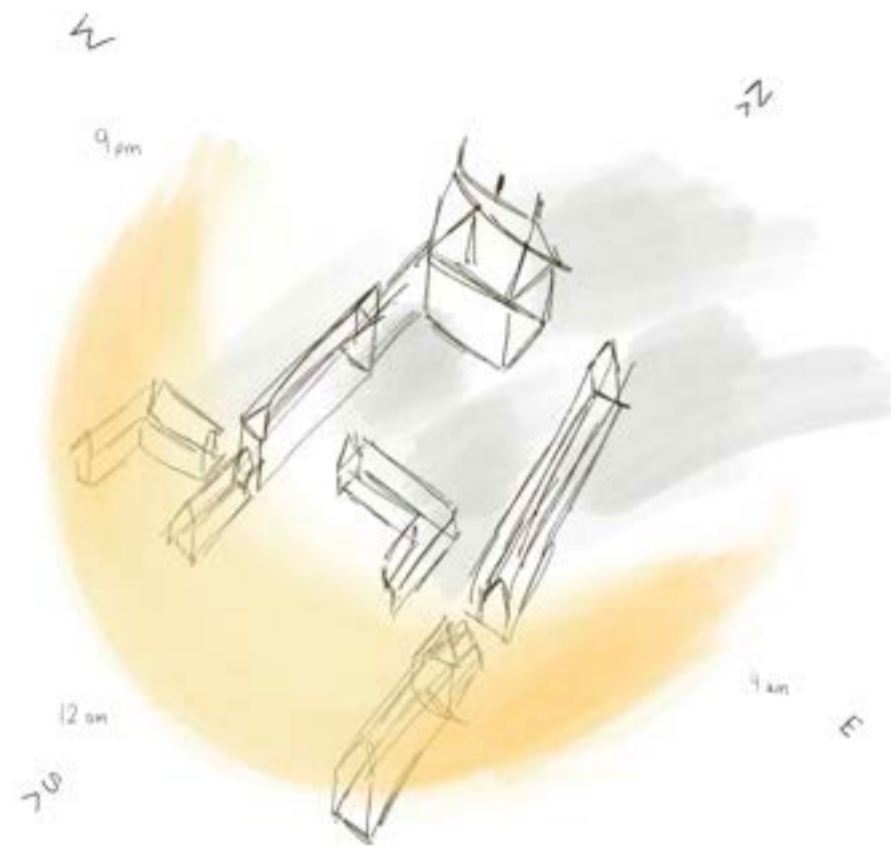
\*Based on data from the NHS Hull and North Yorkshire Integrated Care Board A&E Attendances & Emergency Admission monthly statistics, NHS and independent sector organisations in England.



# SITE

Manor Farm Cross Gates  
Harpham  
East Riding Of Yorkshire  
YO25 4QS

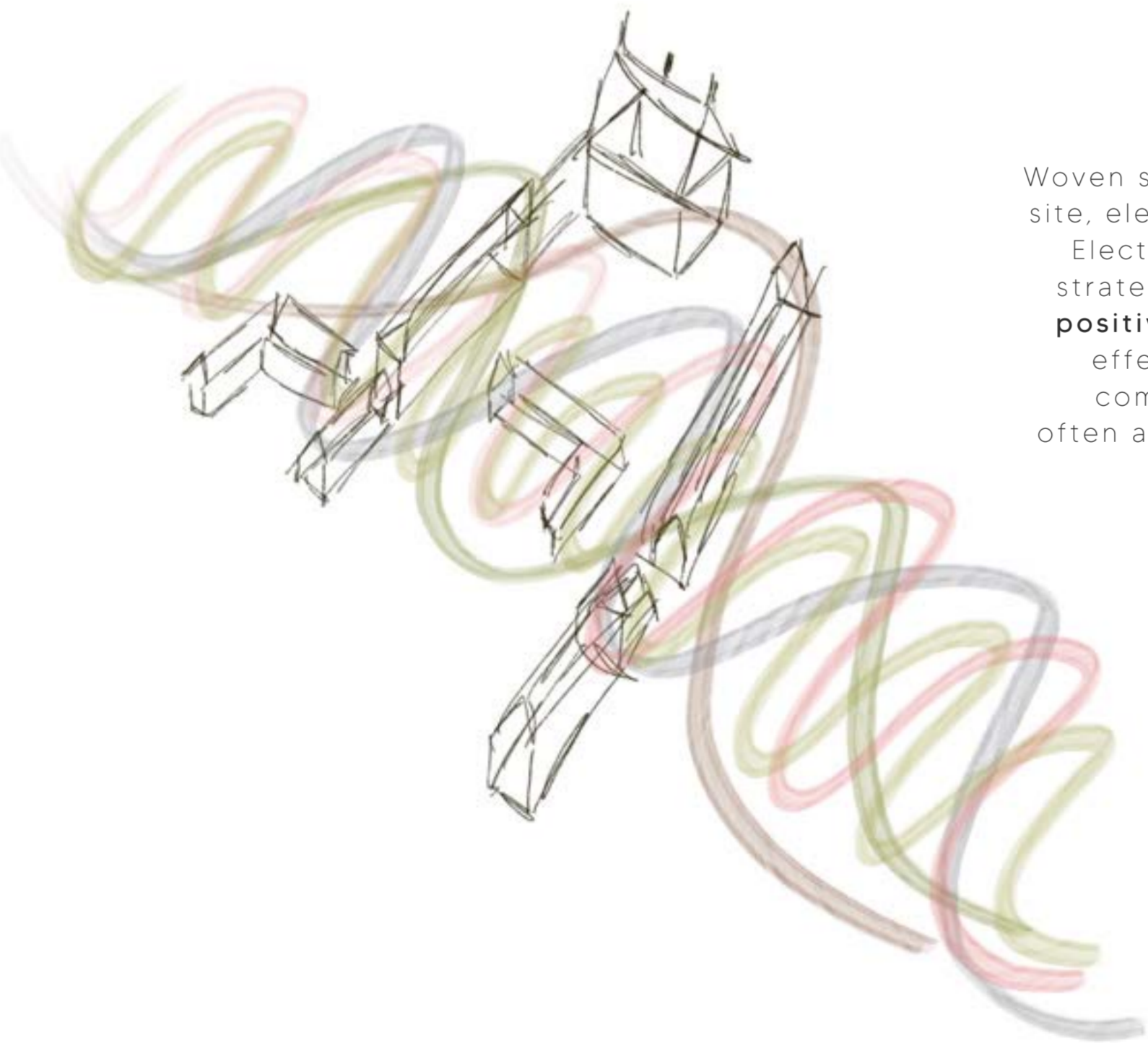
NHS board:  
Humber and North Yorkshire integrated care board



## CONCEPT

### ELECTROMAGNETIC SPECTRUM

Woven seamlessly throughout the site, elements extracted from the Electromagnetic spectrum, are strategically designed to **evoke positive feelings and emotions**, effectively counteracting the common negative sentiments often associated with healthcare facilities.



# BARRIERS TO HEALTHCARE IN RURAL AREAS

## 1| DISTANCE AND TRANSPORTATION



Map showing distance to and from site to closest A&Es'.  
- Average of 18.9 miles for the closest A&E

## 2| AN AGEING POPULATION



Map showing density of population aged 65 and over.  
- North and East Yorkshire have a higher density of over 65 year olds compared to their surrounding areas.

**As the current NHS continues to remain under immense pressure, ... suggesting that 'maybe it's time to bring back the cottage hospital.'**

The Scotsman, dec 2023.

## 3| NHS UNDER PRESSURE

WAITING TIME



**< 4 HOURS WAIT**      **> 4 HOURS WAIT**

A pie chart illustrates the proportion of A&E attendees within the Humber and North Yorkshire NHS Integrated Care Board who were seen within the 4-hour operational standard over a 12-month period from January 2023 to December 2023.

Data sourced from (www.england.nhs.uk, n.d.)

# SUSTAINABILITY

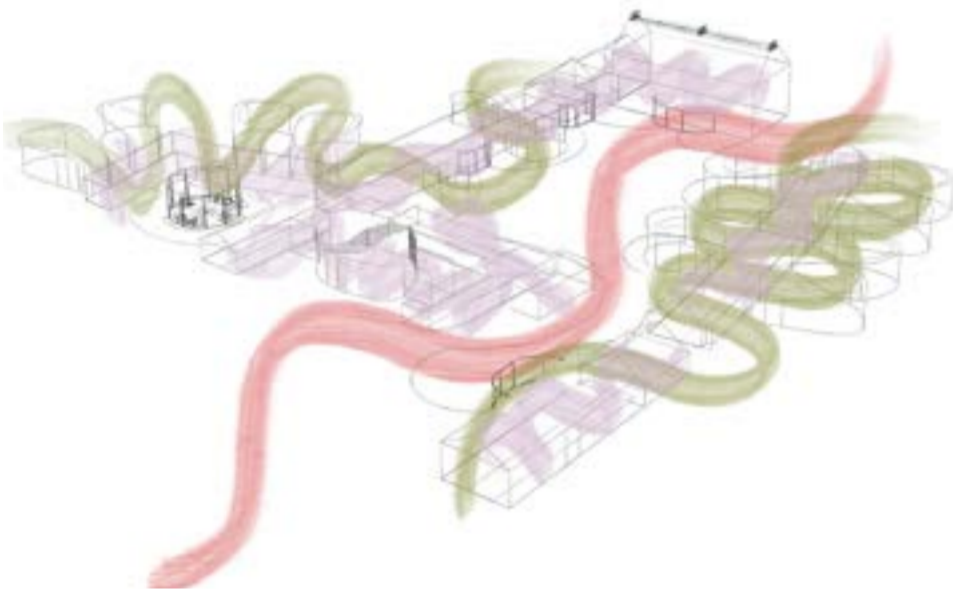
Using the RIBA Sustainable Outcomes to ensure a the project will be sustainably driven.

Good Health & Wellbeing

## INDOOR ENVIRONMENTAL QUALITY

The design prioritises immersing users in the natural environment, achieved through expansive glass facades and skylights in all pod extensions. Smart glass replaces curtains in consultation rooms to enhance connection to the outside.

Optimal acoustic comfort is ensured through the use of wood for joinery, cork flooring in designated areas like the 'Quiet Room', and organic forms like curves that evoke movement. A Displacement Ventilation System improves indoor air quality and reduces intrusive sound levels, enhancing overall experience.



Net Zero Embodied Carbon

## REDEVELOPMENT AND MATERIALITY

The strategy focuses on reusing existing infrastructure by employing modular off-site construction and extension 'pods' instead of demolishing and rebuilding, which preserves the site's character and minimizes carbon emissions.

Thorough research and sourcing of materials from environmentally conscious companies, such as Fresso, are prioritised. Natural materials made from recycled products, like Bycrete by Senso made from discarded fishing nets, are favored to reduce landfill waste and combat marine plastic pollution.

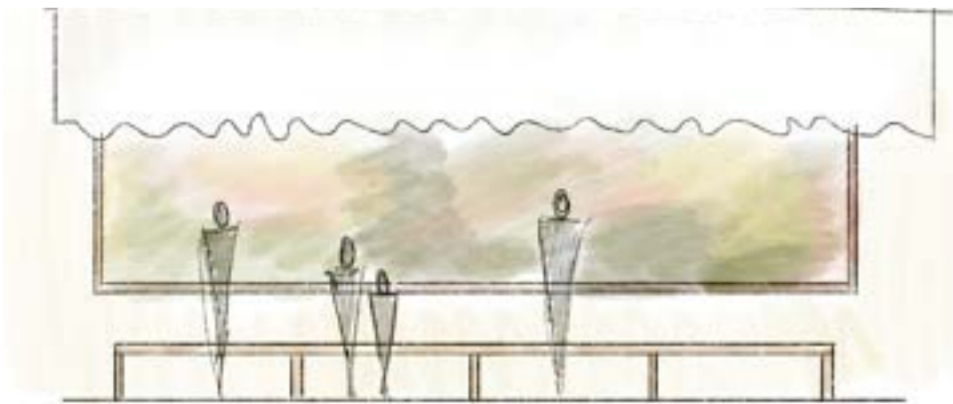


Sustainable Communities & Social Value

## SOCIALLY ENGAGING DESIGN

Fostering social interaction through intentional design, integrating elements that spark curiosity, captivate interest, and inspire conversation, such as art installations, greenery, and captivating focal points. Artwork is thoughtfully showcased across all plots, serving as catalysts for meaningful social engagement.

Privacy is meticulously safeguarded through strategic positioning of extensions, exemplified by the patient pods angled to limit sightlines of neighbouring patients and other users across the site.



Sustainable Land Use & Ecology

## ECOLOGY PRESERVATION AND BIODIVERSITY

Extensive consideration to be given to the surrounding wildlife to ensure the healthcare centre does not affect their existing habitats. Existing green spaces within the site are to be retained and enhanced.

Outcomes to include the planting of significantly more plants and trees throughout the site aiming to enhance the biodiversity by >10%. Additionally, the installation of green roofs on all extensions, aims to replicate any biodiversity that might have been compromised at ground level.



# DESIGN INTENTIONS

## ACTIVE DESIGN

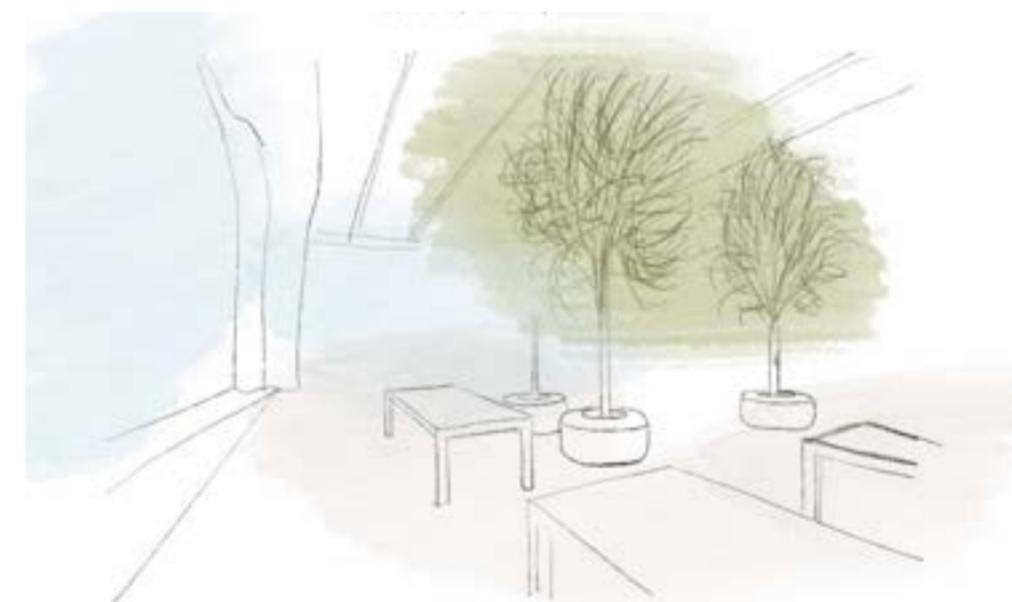
Seeking to design spaces that integrate physical activity into the building itself. Seamlessly creating environments that make it easy, convenient, and enjoyable for people to engage in physical activity as part of their daily lives. Resulting in improved public health and well-being.



## A HEALTHIER SOCIETY

The future of healthcare begins with each individual taking responsibility for their own well-being.

By creating environments that nurture physical, mental, and social health for everyone in the community, we can gradually shift towards a healthier society where people rely less on the healthcare system.



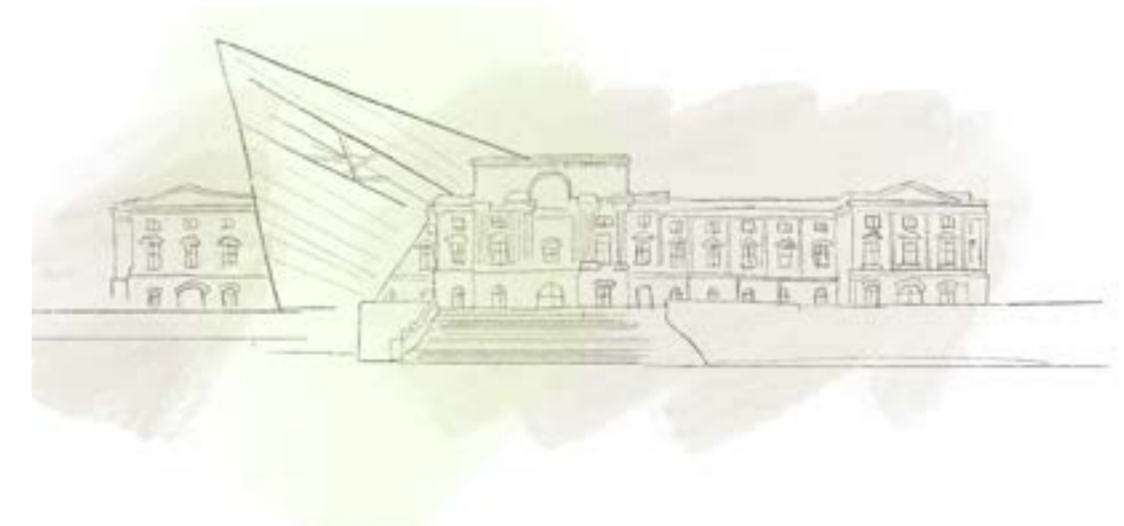
## BIOPHILIC DESIGN

My design aim to connect people directly to nature.

When people immerse themselves in the presence of nature, they naturally experience enhanced well-being in mind, body and spirit.

## ENHANCING UPON THE EXISTING INFRASTRUCTURES

Enhancing upon existing infrastructures involves improving and optimizing the current built environment to better serve the needs of society, address emerging challenges and promote sustainable development.



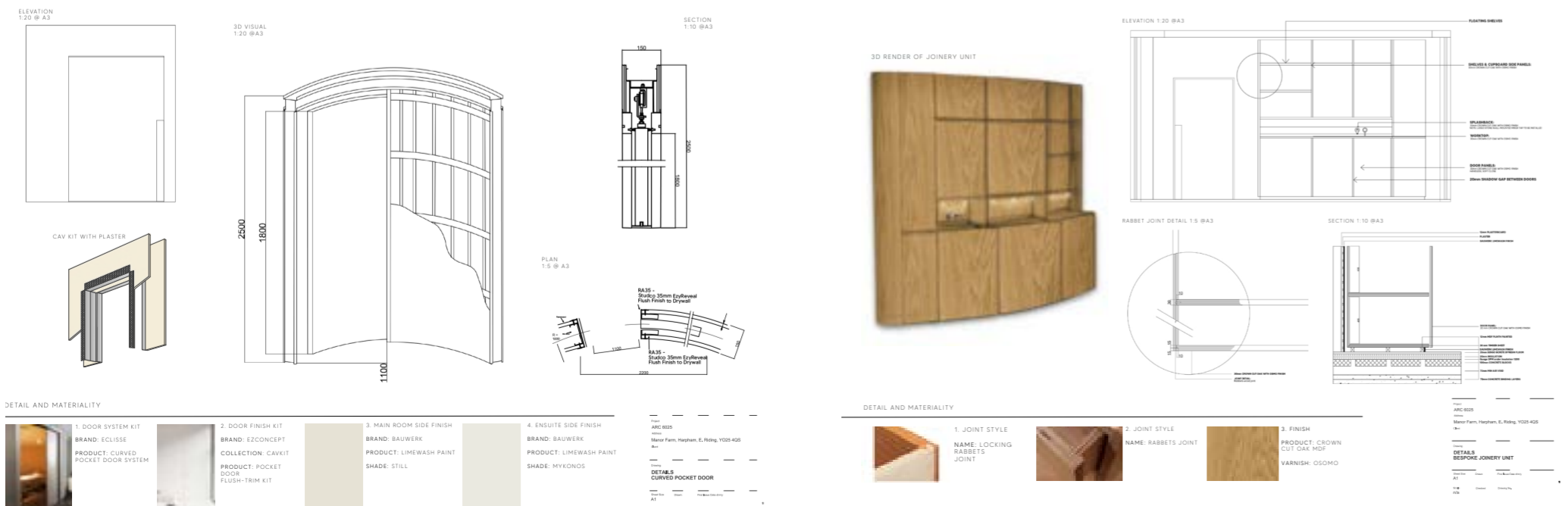
# OVERALL site

The final design, inspired by the **electromagnetic spectrum's natural shape**, utilises **curvature to create fluid lines and organic forms**. This fosters **movement and vitality**, benefiting staff, patients, and visitors. The goal is to **enhance well-being and circadian rhythms, expediting patient healing**. Research shows **curved lines reduce stress** in contrast to sharp angles, which trigger cortisol release, hindering healing. Embracing **curvature in this design promotes calm, facilitating healing and restoration**.

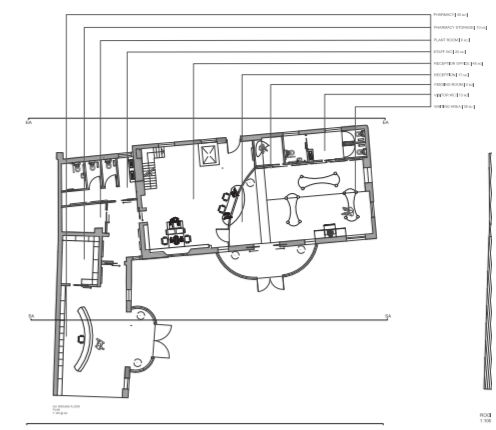


# DETAILS

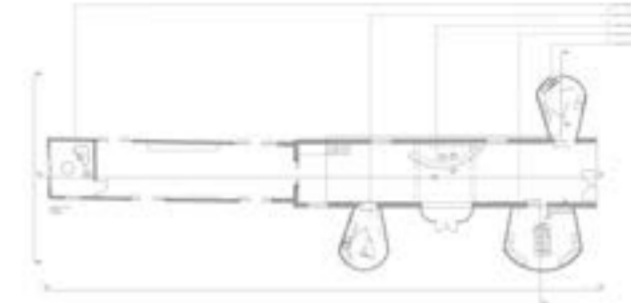
Detailing of joinery units and curved sliding pocket door



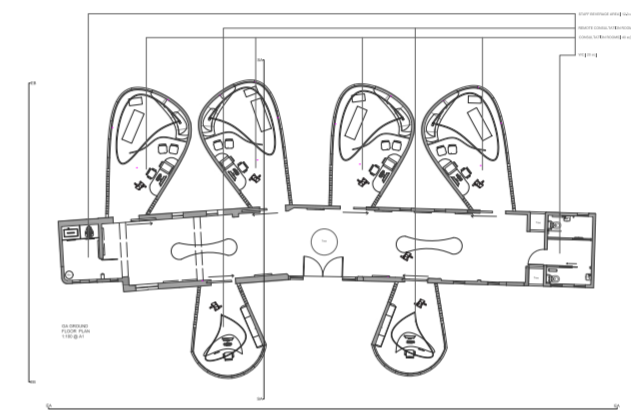
PLOT 1 | RECEPTION area



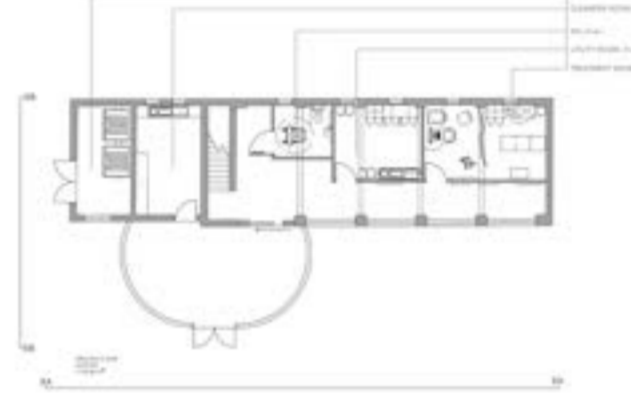
PLOT 2 | UNIT support



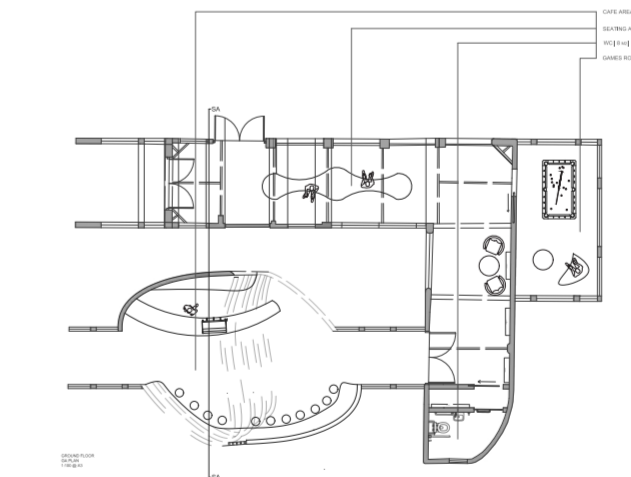
PLOT 3 | CONSULTATION room



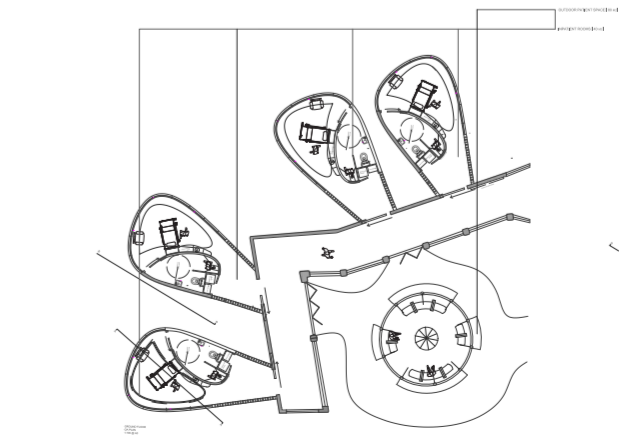
PLOT 4 | TREATMENT centre



PLOT 5 | CAFE space



PLOT 6 | PATIENT pod



**FABERKAT**  
[SERIES 100]  
A series of high-quality, durable, and easy-to-clean surfaces for public spaces. The range includes wall panels, ceiling panels, and floor panels. The surfaces are available in a wide range of colors and finishes, including wood-grain, stone, and solid colors. The surfaces are made from a high-quality, durable material that is resistant to scratches, stains, and impact. The surfaces are also easy to clean and maintain.

**SENSO FLOORING**  
[PURE COLLECTION]  
A series of high-quality, durable, and easy-to-clean flooring solutions for public spaces. The range includes wall panels, ceiling panels, and floor panels. The surfaces are available in a wide range of colors and finishes, including wood-grain, stone, and solid colors. The surfaces are made from a high-quality, durable material that is resistant to scratches, stains, and impact. The surfaces are also easy to clean and maintain.

**ASTRO**  
[SERIES 100]  
A series of high-quality, durable, and easy-to-clean surfaces for public spaces. The range includes wall panels, ceiling panels, and floor panels. The surfaces are available in a wide range of colors and finishes, including wood-grain, stone, and solid colors. The surfaces are made from a high-quality, durable material that is resistant to scratches, stains, and impact. The surfaces are also easy to clean and maintain.

**NEW DIRECT**  
[SERIES 100]  
A series of high-quality, durable, and easy-to-clean surfaces for public spaces. The range includes wall panels, ceiling panels, and floor panels. The surfaces are available in a wide range of colors and finishes, including wood-grain, stone, and solid colors. The surfaces are made from a high-quality, durable material that is resistant to scratches, stains, and impact. The surfaces are also easy to clean and maintain.

**LUSSO STONE**  
[SERIES 100]  
A series of high-quality, durable, and easy-to-clean surfaces for public spaces. The range includes wall panels, ceiling panels, and floor panels. The surfaces are available in a wide range of colors and finishes, including wood-grain, stone, and solid colors. The surfaces are made from a high-quality, durable material that is resistant to scratches, stains, and impact. The surfaces are also easy to clean and maintain.

**SENSO FLOORING**  
[SAFE CARE EVO2]  
A series of high-quality, durable, and easy-to-clean flooring solutions for public spaces. The range includes wall panels, ceiling panels, and floor panels. The surfaces are available in a wide range of colors and finishes, including wood-grain, stone, and solid colors. The surfaces are made from a high-quality, durable material that is resistant to scratches, stains, and impact. The surfaces are also easy to clean and maintain.

**S&R STONEVARD**  
[SERIES 100]  
A series of high-quality, durable, and easy-to-clean surfaces for public spaces. The range includes wall panels, ceiling panels, and floor panels. The surfaces are available in a wide range of colors and finishes, including wood-grain, stone, and solid colors. The surfaces are made from a high-quality, durable material that is resistant to scratches, stains, and impact. The surfaces are also easy to clean and maintain.

**SENSO FLOORING**  
[SAFE CARE EVO2]  
A series of high-quality, durable, and easy-to-clean flooring solutions for public spaces. The range includes wall panels, ceiling panels, and floor panels. The surfaces are available in a wide range of colors and finishes, including wood-grain, stone, and solid colors. The surfaces are made from a high-quality, durable material that is resistant to scratches, stains, and impact. The surfaces are also easy to clean and maintain.

**HARLEQUIN**  
[SERIES 100]  
A series of high-quality, durable, and easy-to-clean surfaces for public spaces. The range includes wall panels, ceiling panels, and floor panels. The surfaces are available in a wide range of colors and finishes, including wood-grain, stone, and solid colors. The surfaces are made from a high-quality, durable material that is resistant to scratches, stains, and impact. The surfaces are also easy to clean and maintain.

**SENSO FLOORING**  
[SAFE CARE EVO2]  
A series of high-quality, durable, and easy-to-clean flooring solutions for public spaces. The range includes wall panels, ceiling panels, and floor panels. The surfaces are available in a wide range of colors and finishes, including wood-grain, stone, and solid colors. The surfaces are made from a high-quality, durable material that is resistant to scratches, stains, and impact. The surfaces are also easy to clean and maintain.

**FORESSO**  
[SERIES 100]  
A series of high-quality, durable, and easy-to-clean surfaces for public spaces. The range includes wall panels, ceiling panels, and floor panels. The surfaces are available in a wide range of colors and finishes, including wood-grain, stone, and solid colors. The surfaces are made from a high-quality, durable material that is resistant to scratches, stains, and impact. The surfaces are also easy to clean and maintain.

# SECTIONS



NOTE NOT TO SCALE