



Main activity area



Client briefing

# NASEBY YOUTH CENTRE 'LIVE PROJECT'

Client: Darnish Amraz, Senior Youth worker  
The site: Naseby Youth Centre, Naseby Rd, Alum Rock, Birmingham, B8 3HG.

Naseby Youth Centre is located in the centre of Alum Rock, Birmingham next to a school premises. The centre has reopened after having been closed for a number of years.

The site is a single story detached building with a small green space at the front and car park at the rear. The client has suggested the following areas for refurbishment: external grass area at the front of the building, external entrance area, internal reception and administrative areas, main mall, lighting and general refurbishment, café area, furniture and general scheme, servery point ( kitchen excluded from works), games area, mural, furniture, music, IT and teaching spaces.

Competition submission requirements:

- x1 A1 sheet –rendered plan, concept ideas and mood/material imagery
- x1 A1 sheet –sketch visuals or hybrid/collage representation of the proposed space with a supporting statement of the overall design intention (no more than 150 words)

Final pin up submission – Friday 27th May at 11am. Each group had 5 minutes to present their work to the client.

C  
A  
S  
E  
  
S  
T  
U  
D  
Y



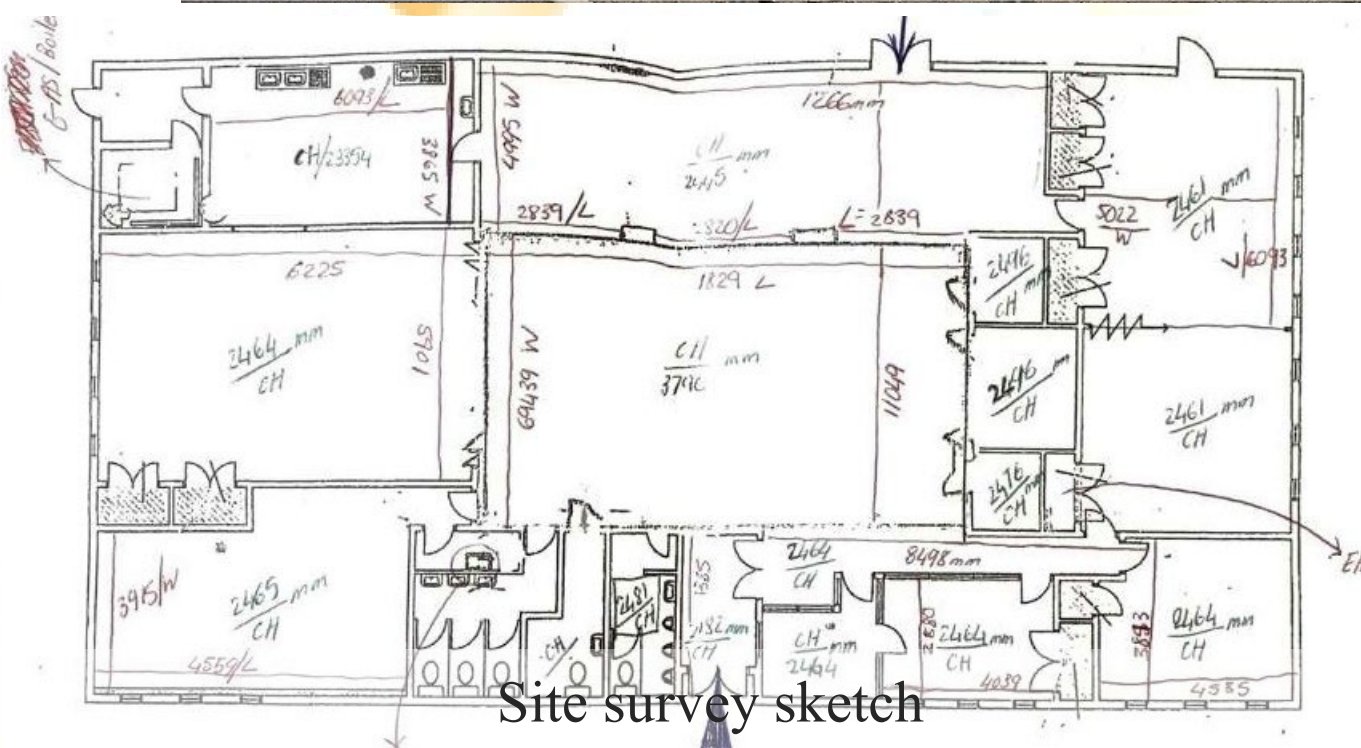
The Lighthouse youth centre



Music room



Classroom



Site survey sketch



Building façade and green area





## MAIN SCHEME DESIGN

The project was initiated with an important review of the building, client requirements and budget, in conclusion we decided to maintain the structural characteristics of the interior in the direction of reducing costs and appreciating the volumes of the site. The fundamental aspect of the entire design intention is colour and using it in different methods that can convert the atmosphere and the overall ambience of the space into a more welcoming and responsive interior. As mentioned by the client, the use of murals, graffiti, drawings, painting and motivational stickers is a requisite that will assist with a satisfactory experience for the young people that attend the centre. The predominant intention of the design is to create a “wow” atmosphere that induces feelings of inspiration and motivation, which will ultimately boost the mood of the youth willing to visit, persuading them to come back again.

RAL 1012	Light Yellow	RAL 1013	Light Green	RAL 7003	Blue Grey
RAL 1014	Light Blue	RAL 1015	Light Grey	RAL 7004	Dark Blue
RAL 1018	Light Purple	RAL 6020	Light Green	RAL 7005	Light Blue
RAL 5003	Light Yellow	RAL 6003	Light Green	RAL 7006	Light Blue
RAL 2004	Light Orange	RAL 6004	Light Green	RAL 7007	Light Blue
RAL 2005	Light Orange	RAL 6005	Light Green	RAL 7008	Light Blue
RAL 3003	Light Blue	RAL 6006	Light Green	RAL 7009	Light Blue
RAL 3004	Light Blue	RAL 6007	Light Green	RAL 7010	Light Blue
RAL 3005	Light Blue	RAL 6008	Light Green	RAL 7011	Light Blue
RAL 3006	Light Blue	RAL 6009	Light Green	RAL 7012	Light Blue
RAL 3007	Light Blue	RAL 6010	Light Green	RAL 7013	Light Blue
RAL 3008	Light Blue	RAL 6011	Light Green	RAL 7014	Light Blue
RAL 3009	Light Blue	RAL 6012	Light Green	RAL 7015	Light Blue
RAL 3010	Light Blue	RAL 6013	Light Green	RAL 7016	Light Blue
RAL 3011	Light Blue	RAL 6014	Light Green	RAL 7017	Light Blue
RAL 3012	Light Blue	RAL 6015	Light Green	RAL 7018	Light Blue
RAL 3013	Light Blue	RAL 6016	Light Green	RAL 7019	Light Blue
RAL 3014	Light Blue	RAL 6017	Light Green	RAL 7020	Light Blue
RAL 3015	Light Blue	RAL 6018	Light Green	RAL 7021	Light Blue
RAL 3016	Light Blue	RAL 6019	Light Green	RAL 7022	Light Blue
RAL 3017	Light Blue	RAL 6020	Light Green	RAL 7023	Light Blue
RAL 3018	Light Blue	RAL 6021	Light Green	RAL 7024	Light Blue
RAL 3019	Light Blue	RAL 6022	Light Green	RAL 7025	Light Blue
RAL 3020	Light Blue	RAL 6023	Light Green	RAL 7026	Light Blue
RAL 3021	Light Blue	RAL 6024	Light Green	RAL 7027	Light Blue
RAL 3022	Light Blue	RAL 6025	Light Green	RAL 7028	Light Blue
RAL 3023	Light Blue	RAL 6026	Light Green	RAL 7029	Light Blue
RAL 3024	Light Blue	RAL 6027	Light Green	RAL 7030	Light Blue
RAL 3025	Light Blue	RAL 6028	Light Green	RAL 7031	Light Blue
RAL 3026	Light Blue	RAL 6029	Light Green	RAL 7032	Light Blue
RAL 3027	Light Blue	RAL 6030	Light Green	RAL 7033	Light Blue
RAL 3028	Light Blue	RAL 6031	Light Green	RAL 7034	Light Blue
RAL 3029	Light Blue	RAL 6032	Light Green	RAL 7035	Light Blue
RAL 3030	Light Blue	RAL 6033	Light Green	RAL 7036	Light Blue
RAL 3031	Light Blue	RAL 6034	Light Green	RAL 7037	Light Blue
RAL 3032	Light Blue	RAL 6035	Light Green	RAL 7038	Light Blue
RAL 3033	Light Blue	RAL 6036	Light Green	RAL 7039	Light Blue
RAL 3034	Light Blue	RAL 6037	Light Green	RAL 7040	Light Blue
RAL 3035	Light Blue	RAL 6038	Light Green	RAL 7041	Light Blue
RAL 3036	Light Blue	RAL 6039	Light Green	RAL 7042	Light Blue
RAL 3037	Light Blue	RAL 6040	Light Green	RAL 7043	Light Blue
RAL 3038	Light Blue	RAL 6041	Light Green	RAL 7044	Light Blue
RAL 3039	Light Blue	RAL 6042	Light Green	RAL 7045	Light Blue
RAL 3040	Light Blue	RAL 6043	Light Green	RAL 7046	Light Blue
RAL 3041	Light Blue	RAL 6044	Light Green	RAL 7047	Light Blue
RAL 3042	Light Blue	RAL 6045	Light Green	RAL 7048	Light Blue
RAL 3043	Light Blue	RAL 6046	Light Green	RAL 7049	Light Blue
RAL 3044	Light Blue	RAL 6047	Light Green	RAL 7050	Light Blue
RAL 3045	Light Blue	RAL 6048	Light Green	RAL 7051	Light Blue
RAL 3046	Light Blue	RAL 6049	Light Green	RAL 7052	Light Blue
RAL 3047	Light Blue	RAL 6050	Light Green	RAL 7053	Light Blue
RAL 3048	Light Blue	RAL 6051	Light Green	RAL 7054	Light Blue
RAL 3049	Light Blue	RAL 6052	Light Green	RAL 7055	Light Blue
RAL 3050	Light Blue	RAL 6053	Light Green	RAL 7056	Light Blue
RAL 3051	Light Blue	RAL 6054	Light Green	RAL 7057	Light Blue
RAL 3052	Light Blue	RAL 6055	Light Green	RAL 7058	Light Blue
RAL 3053	Light Blue	RAL 6056	Light Green	RAL 7059	Light Blue
RAL 3054	Light Blue	RAL 6057	Light Green	RAL 7060	Light Blue
RAL 3055	Light Blue	RAL 6058	Light Green	RAL 7061	Light Blue
RAL 3056	Light Blue	RAL 6059	Light Green	RAL 7062	Light Blue
RAL 3057	Light Blue	RAL 6060	Light Green	RAL 7063	Light Blue
RAL 3058	Light Blue	RAL 6061	Light Green	RAL 7064	Light Blue
RAL 3059	Light Blue	RAL 6062	Light Green	RAL 7065	Light Blue
RAL 3060	Light Blue	RAL 6063	Light Green	RAL 7066	Light Blue
RAL 3061	Light Blue	RAL 6064	Light Green	RAL 7067	Light Blue
RAL 3062	Light Blue	RAL 6065	Light Green	RAL 7068	Light Blue
RAL 3063	Light Blue	RAL 6066	Light Green	RAL 7069	Light Blue
RAL 3064	Light Blue	RAL 6067	Light Green	RAL 7070	Light Blue
RAL 3065	Light Blue	RAL 6068	Light Green	RAL 7071	Light Blue
RAL 3066	Light Blue	RAL 6069	Light Green	RAL 7072	Light Blue
RAL 3067	Light Blue	RAL 6070	Light Green	RAL 7073	Light Blue
RAL 3068	Light Blue	RAL 6071	Light Green	RAL 7074	Light Blue
RAL 3069	Light Blue	RAL 6072	Light Green	RAL 7075	Light Blue
RAL 3070	Light Blue	RAL 6073	Light Green	RAL 7076	Light Blue
RAL 3071	Light Blue	RAL 6074	Light Green	RAL 7077	Light Blue
RAL 3072	Light Blue	RAL 6075	Light Green	RAL 7078	Light Blue
RAL 3073	Light Blue	RAL 6076	Light Green	RAL 7079	Light Blue
RAL 3074	Light Blue	RAL 6077	Light Green	RAL 7080	Light Blue
RAL 3075	Light Blue	RAL 6078	Light Green	RAL 7081	Light Blue
RAL 3076	Light Blue	RAL 6079	Light Green	RAL 7082	Light Blue
RAL 3077	Light Blue	RAL 6080	Light Green	RAL 7083	Light Blue
RAL 3078	Light Blue	RAL 6081	Light Green	RAL 7084	Light Blue
RAL 3079	Light Blue	RAL 6082	Light Green	RAL 7085	Light Blue
RAL 3080	Light Blue	RAL 6083	Light Green	RAL 7086	Light Blue
RAL 3081	Light Blue	RAL 6084	Light Green	RAL 7087	Light Blue
RAL 3082	Light Blue	RAL 6085	Light Green	RAL 7088	Light Blue
RAL 3083	Light Blue	RAL 6086	Light Green	RAL 7089	Light Blue
RAL 3084	Light Blue	RAL 6087	Light Green	RAL 7090	Light Blue
RAL 3085	Light Blue	RAL 6088	Light Green	RAL 7091	Light Blue
RAL 3086	Light Blue	RAL 6089	Light Green	RAL 7092	Light Blue
RAL 3087	Light Blue	RAL 6090	Light Green	RAL 7093	Light Blue
RAL 3088	Light Blue	RAL 6091	Light Green	RAL 7094	Light Blue
RAL 3089	Light Blue	RAL 6092	Light Green	RAL 7095	Light Blue
RAL 3090	Light Blue	RAL 6093	Light Green	RAL 7096	Light Blue
RAL 3091	Light Blue	RAL 6094	Light Green	RAL 7097	Light Blue
RAL 3092	Light Blue	RAL 6095	Light Green	RAL 7098	Light Blue
RAL 3093	Light Blue	RAL 6096	Light Green	RAL 7099	Light Blue
RAL 3094	Light Blue	RAL 6097	Light Green	RAL 7100	Light Blue
RAL 3095	Light Blue	RAL 6098	Light Green	RAL 7101	Light Blue
RAL 3096	Light Blue	RAL 6099	Light Green	RAL 7102	Light Blue
RAL 3097	Light Blue	RAL 6100	Light Green	RAL 7103	Light Blue
RAL 3098	Light Blue	RAL 6101	Light Green	RAL 7104	Light Blue
RAL 3099	Light Blue	RAL 6102	Light Green	RAL 7105	Light Blue
RAL 3100	Light Blue	RAL 6103	Light Green	RAL 7106	Light Blue

**Hacel: Sample Colour Sheet**  
Multiple colours  
Multiple finishes only on certain lights

**Hacel: Bespoke Colours**  
11 lights units come in different colours spotted randomly over ceiling  
No pattern, different heights

**Hacel: Aleda Recessed Trio**  
4 lights units  
1 spaced evenly from each corner of the room  
3 adjustable lights in 1 unit

**Hacel: Bespoke Colours**  
7 lights units come in different colours spotted randomly over ceiling  
No pattern, different heights

**Hacel: Aleda Recessed Trio**  
4 lights units  
1 spaced evenly from each corner of the room  
3 adjustable lights in 1 unit

**Hacel: Pebl Ceiling Mounted**  
2 lights over each double sink  
1 light over each cubicle  
1 light over entrance area

**Hacel: Aleda Recessed Trio**  
2 lights units  
1 spaced evenly from each side of the room  
3 adjustable lights in 1 unit

**Hacel: Explora Star Pendant**  
Interlocking lights  
Colour changing  
3 stars interlocking on ceiling

**Hacel: Lightline IP66**  
LED colour changing strips  
1 light strip around monitor  
1 light strip around units

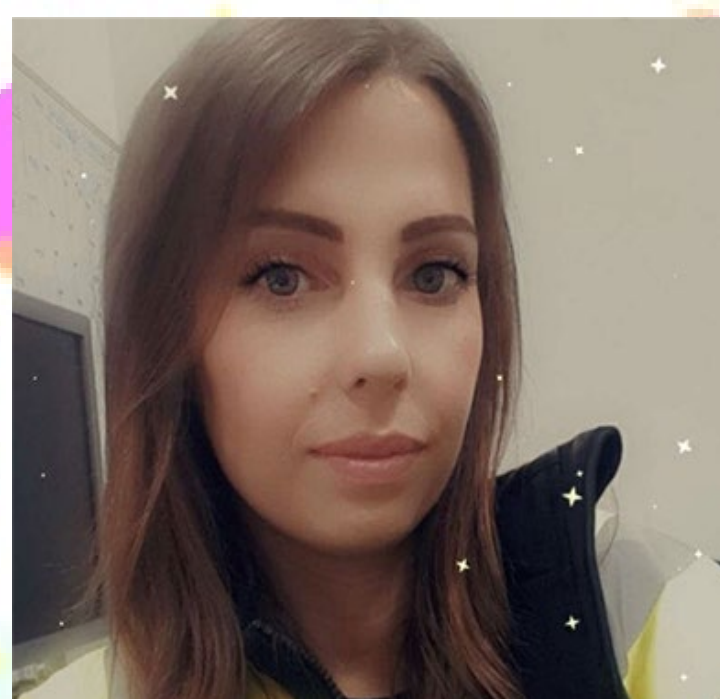
## OUR TEAM



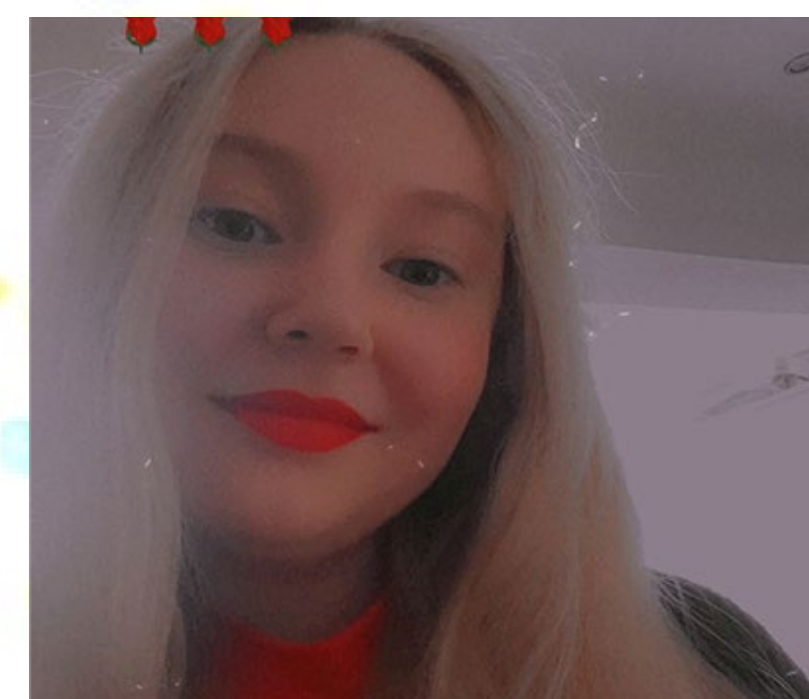
Larisa Lungu



Rosie Bissell



Casey Ashley



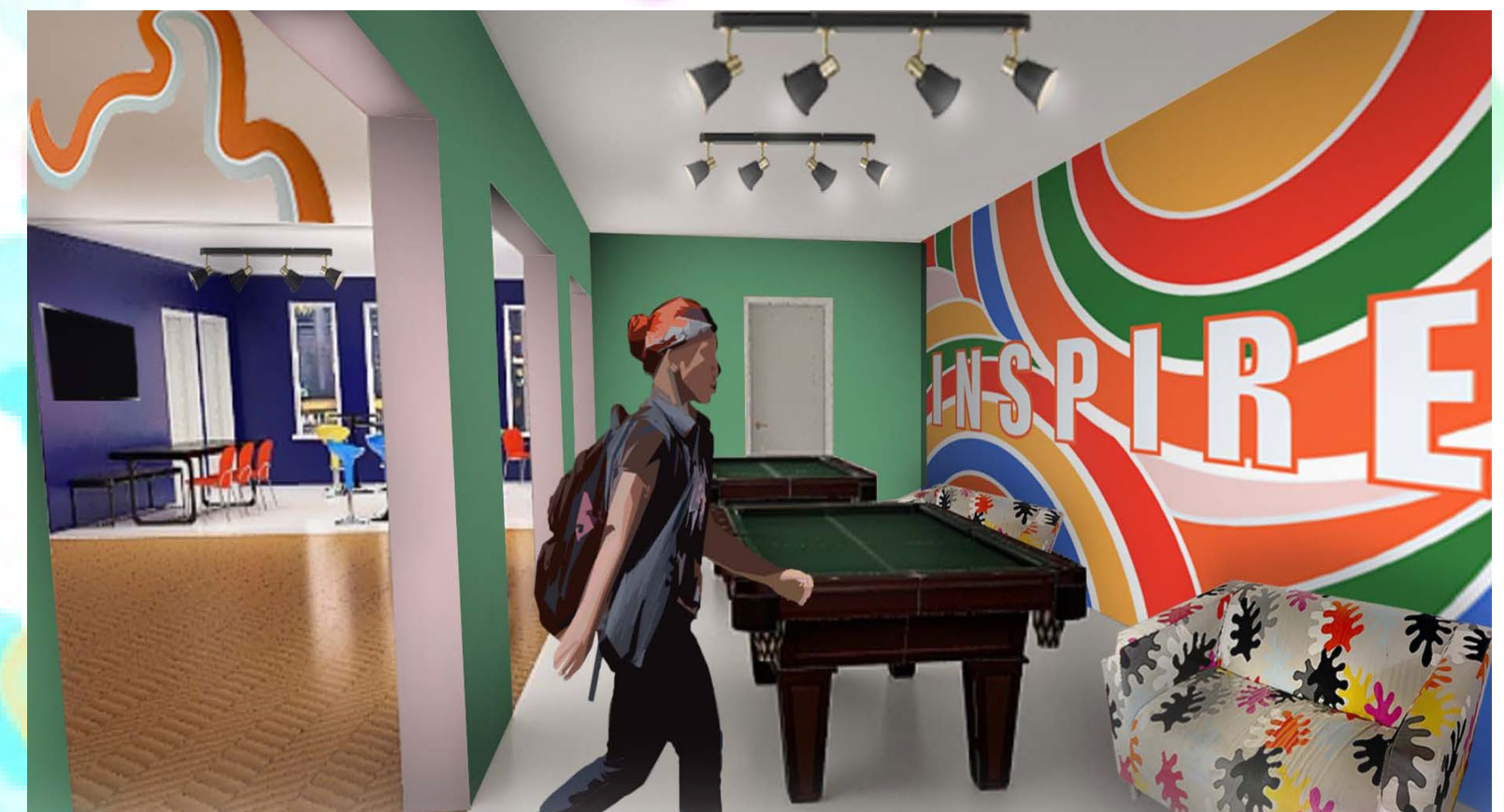
Zoe Thatcher



# MAIN SCHEME DESIGN

A vibrant, “wow” space.

The newly designed Naseby Youth centre is an extremely vibrant, quirky, and inspiring space for those aged 10-19, it is a space they can use for a variety of needs. Whether they need the space for recreational activities, assistance with academic assignment, career advice, Naseby Youth centre will support them. The build is spacious, perfect for table games, socialising, and birthday/ engagements parties (whilst not in use by the youth), with colourful themes that create a lively, positive atmosphere to let them escape outside worries, and feel comfort and safety.





# PROJECT REFLECTION

These images show our winning presentation board and other photos from presentation day. We originally presented a mural design that we would then use as inspiration to create another fun, quirky design that can actually be used for the Naseby Youth Centre. Specifically looking at the inspiring, bold type and lively colours. The main focus of our design was to ensure it was an outcome the Youth Centre could actually reach, being economical and sustainable, whilst upkeeping a fresh new image, this being a place the youth will want to visit. It was essential to us that the design was achievable since it is so important to make the centres a second home, so those who are less fortunate have a safe space to feel comfortable knowing help is available.



The Naseby youth centre will now be able to accommodate almost any need the children will face, the centre will allow them to socialise in the main hall, playing pool or table tennis, allowing them to have fun and be carefree. A kitchen and cafeteria seating area allows them to make any meals/ snacks they wish and sit with friends to enjoy, or they can watch a film on the television.

If they want to go wild they can use the sound proof room to play instruments or play loud video games. However, if they need spaces to focus and get their head down to finish homework or revise there is a classroom and study spaces available. The classroom and IT room are also used to teach English and IT skills, this will allow those to feel dignity when they boost their knowledge, especially since the area has a majority of ethnic minorities. The classrooms will also allow struggling students to catch up and feel proud of themselves. The conference room is great for all enquires and will accommodate career enquires, setting the youth on a beneficial path, so they can reach the future they deserve. They may not have access to this kind of help at home if nobody has been to university before, it will allow them to see the mass of options they have for their future.



We have since created a new mural, inspired by the one we originally used, it remains to be extremely colourful to brighten up the main hall of the youth centre, and be a 'wow' factor for as soon as you walk in, we specifically designed this for our client who requested a bold mural to greet visitors as soon as they walk in. The design is striking and cheerful, it creates a lively atmosphere full of joy, which works successfully in an area of socialising and table games. The bold text is a reminder for those visiting the youth centre to inspire themselves, and to influence them to inspire others. Since the walls have to remain untouched due to asbestos, we believed the best options to create this mural within the very-low budget would be to paint it, or use vinyl stickers. Painting turned out to be the best option since the centre has access to paint and some painters.



We are also going to be of help to the client when painting the mural, happily helping out the community and gaining real life experience. This project has also given us great experience in meeting a real life client, surveying the building for measurements, generating sustainable designs with a low budget, working in a short time frame, working in a group and then actually presenting the idea to the clients, these are all massively beneficial to our future as interior architects and designers.

The colours for the mural and rooms (the colours allowed us to separate the rooms into different zones without labels/ walls) we took inspiration from the Pakistan culture. This is a predominant culture in the area, Pakistan has its share of brilliant green fields, they associate green with growth, fertility and nature, it is also the central colour of Pakistan's flag.

The colours used in the mural are also frequently seen in the African culture, these colours are very important to the community since they have meanings of harmony, femininity and spiritual moods.

