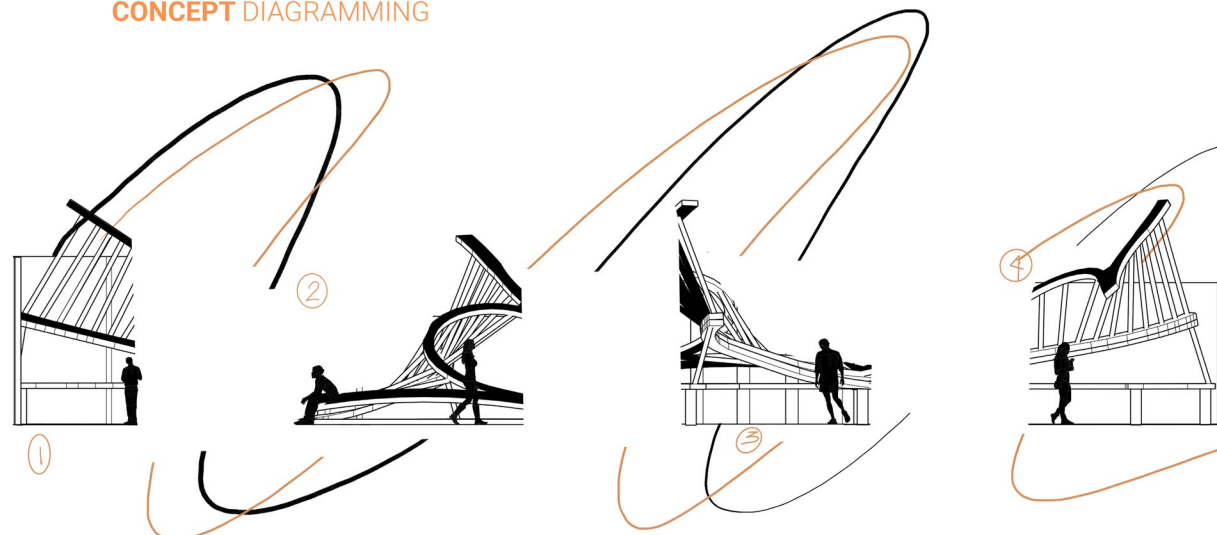


## STRUCTURE EDITS



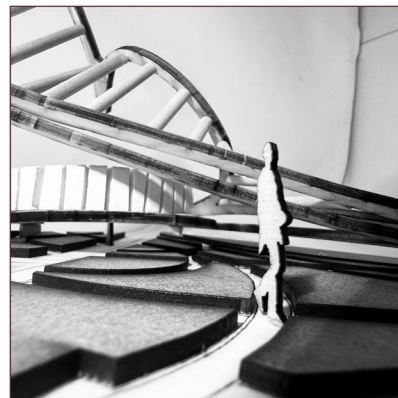
Capturing the evolution of the central sculptural spine. This expressive form that guides users through the space like a physical interface. The hand-drawn sketch on the left shows the early structure as a flowing skeletal pathway. On the right, the refined version integrates human scale and movement, using dynamic curves and framing elements that respond to the idea of transformation. The layered path and its organic progression represent the journey of growth, mirroring the project's core metaphor: a continuous unfolding of potential.

## CONCEPT DIAGRAMMING



This series visualizes the transformation of a key architectural element through four stages. Inspired by motion and growth, the structure evolves from a grounded form to an expressive, dynamic gesture that interacts with users. The flowing lines emphasize continuity and transformation, guiding the spatial journey.

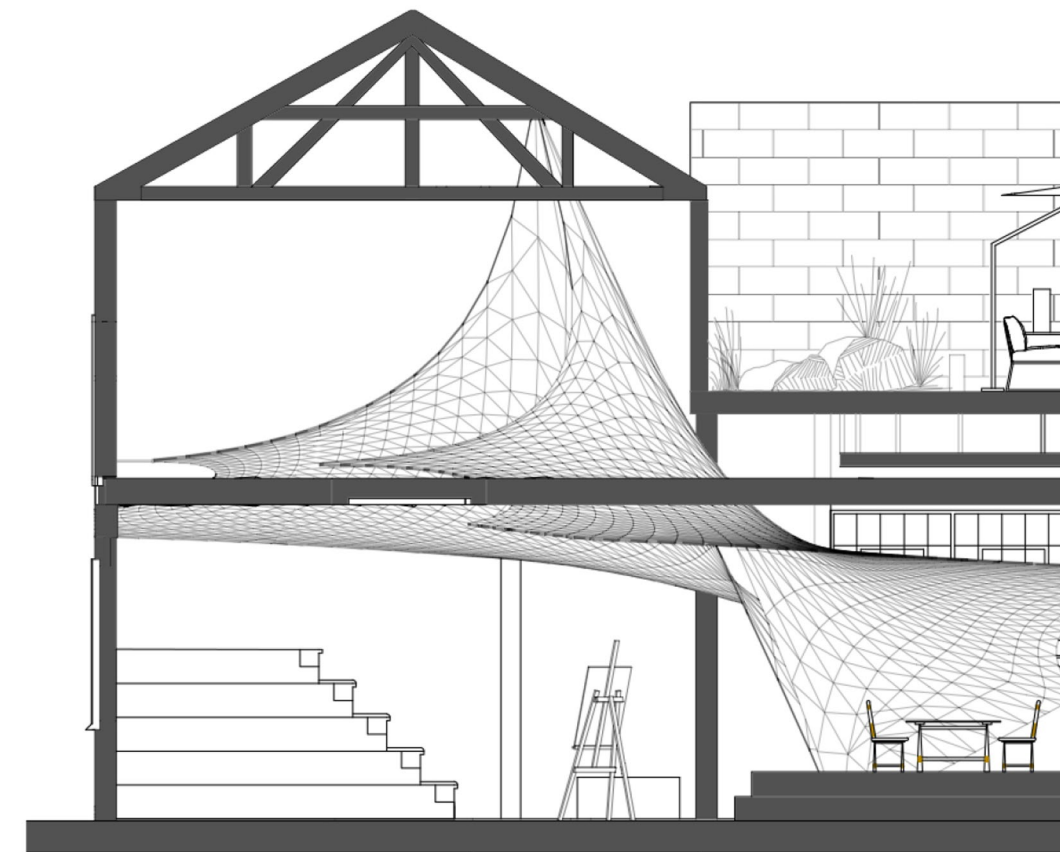
## CONCEPT MODEL ITERATIONS



The curved elements guide the user both physically and emotionally intersecting, suggesting moments of clarity and complexity. The slatted structure creates a sense of movement and rhythm, almost like time unfolding in space. As you walk through it, the architecture doesn't just frame the journey, it becomes part of the process of change itself.



## PARTIAL SECTION MODEL

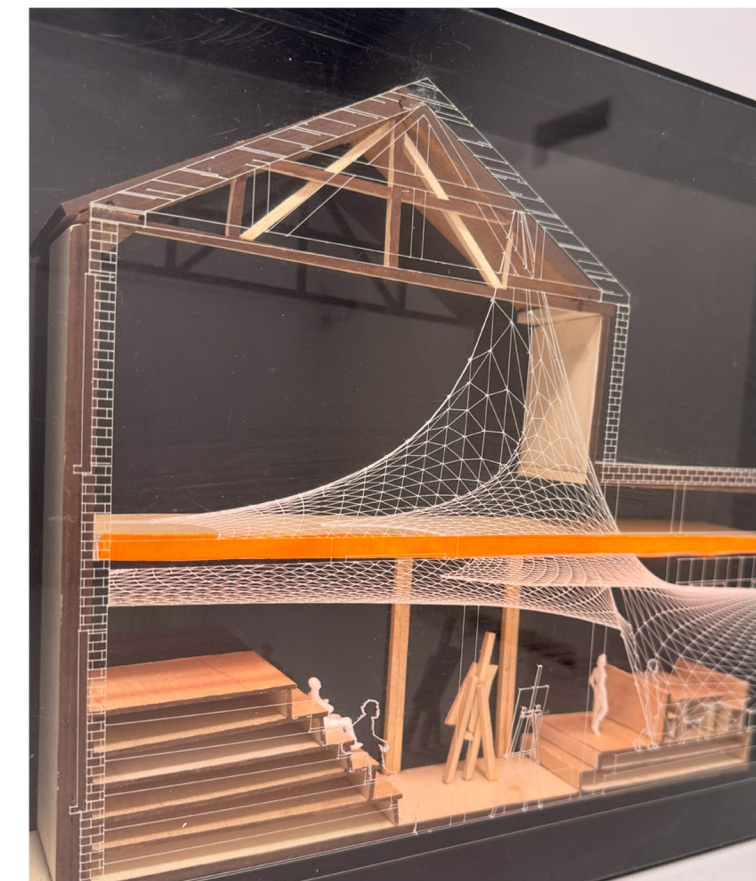
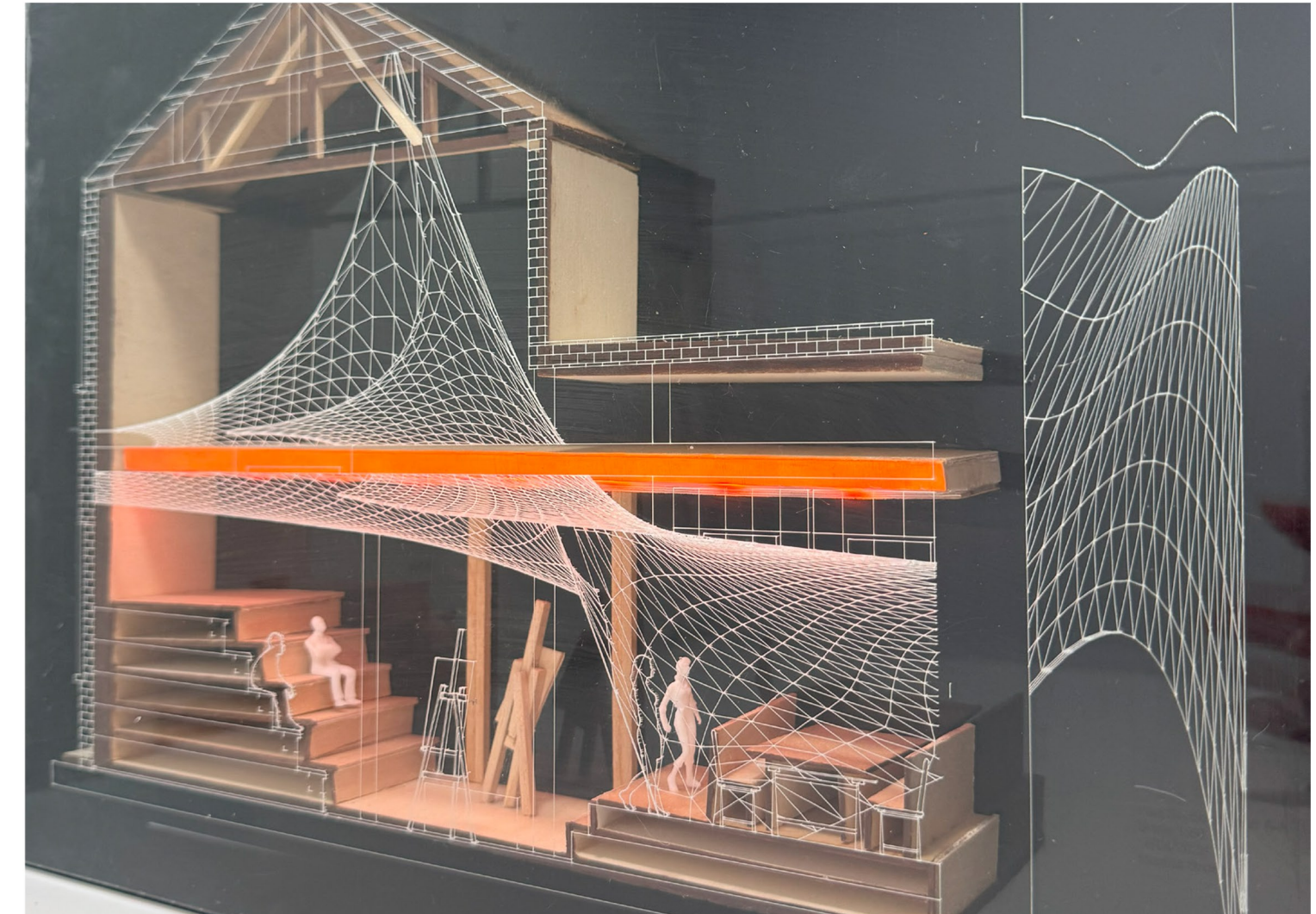
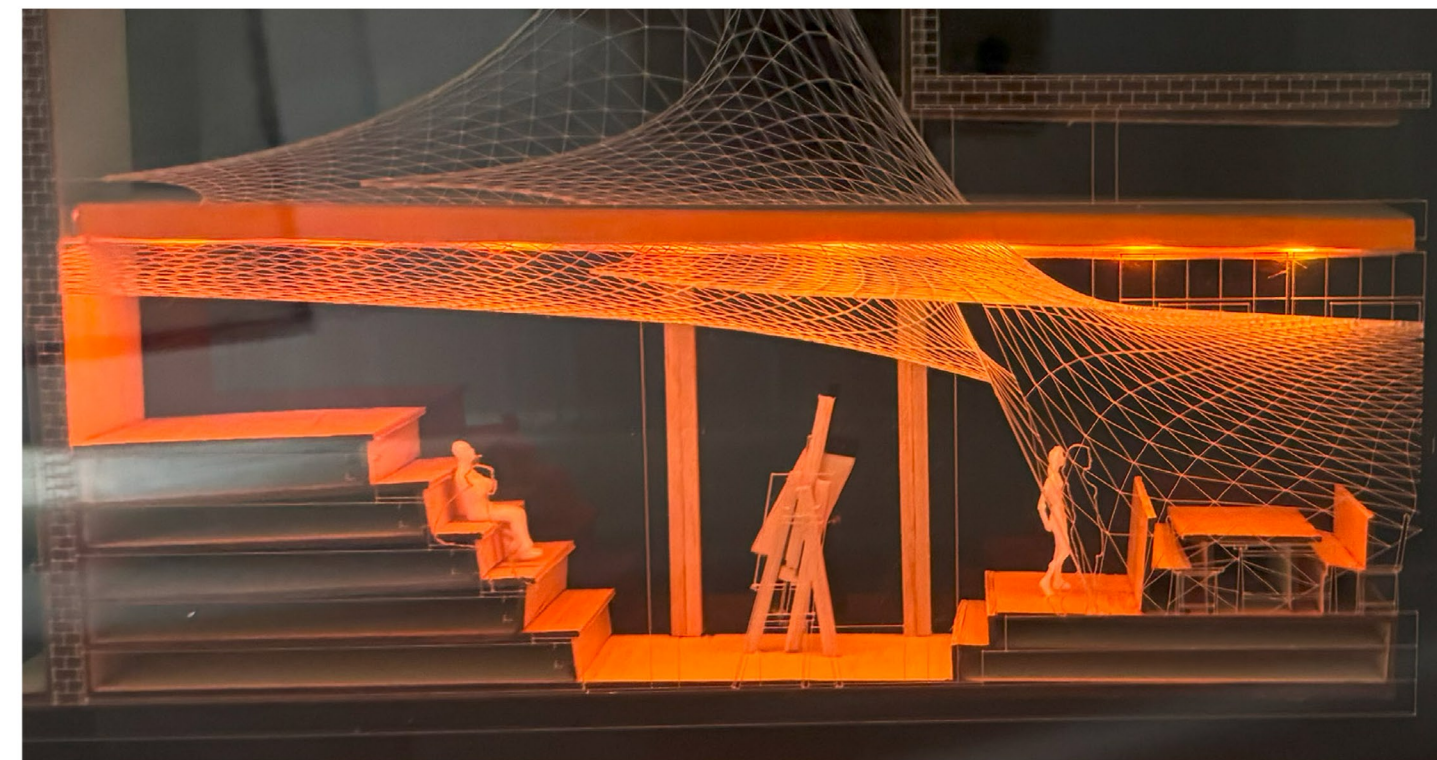


Reference Section (not to scale)

1m 2m 3m 4m 5m 10m

### Choosing Part Section

This part section provides a detailed exploration of the spatial sequencing and volumetric relationships within the design. It captures the transition from Explore to Grow, emphasizing vertical circulation, material junctions, and spatial layering. Key elements such as mezzanine connections and structural intersections are illustrated to demonstrate how movement and perspectives are controlled throughout the user journey.



### Part Section Modelling

The section was further translated into a part section model, constructed to scale, showcasing the structural depth, material transitions, and volumetric complexity. The model highlights the interplay between solid and void, as well as the integration of key design features like the mesh ceiling structure and mezzanine flow. Photographs of the model document its spatial clarity and material representation.



ABOUT

How interiors can empower change — not through perfection, but through possibility.

A poetic spatial journey of growth, choice, and becoming

In a city shaped by movement and memory, this project unfolds like a whispered story, a space where time pauses, and the invisible becomes felt.

Inspired by the butterfly effect and the intricate knots of Birmingham's Spaghetti Junction, it traces the quiet beauty of transformation, from the stillness of the egg to the bold emergence of flight.

This is a sanctuary for becoming: for the young and the curious, the uncertain and the inspired. Each level, each turn, each texture echoes the inner journey we take when we are allowed to explore without fear, without hurry.

Rooted in history, reaching for possibility, it is a space of exposure and connection, where learning is layered into architecture, and architecture listens back.

Here, design becomes a medium for care. A map for growth. A city not of buildings, but of people in bloom.



NARRATIVE

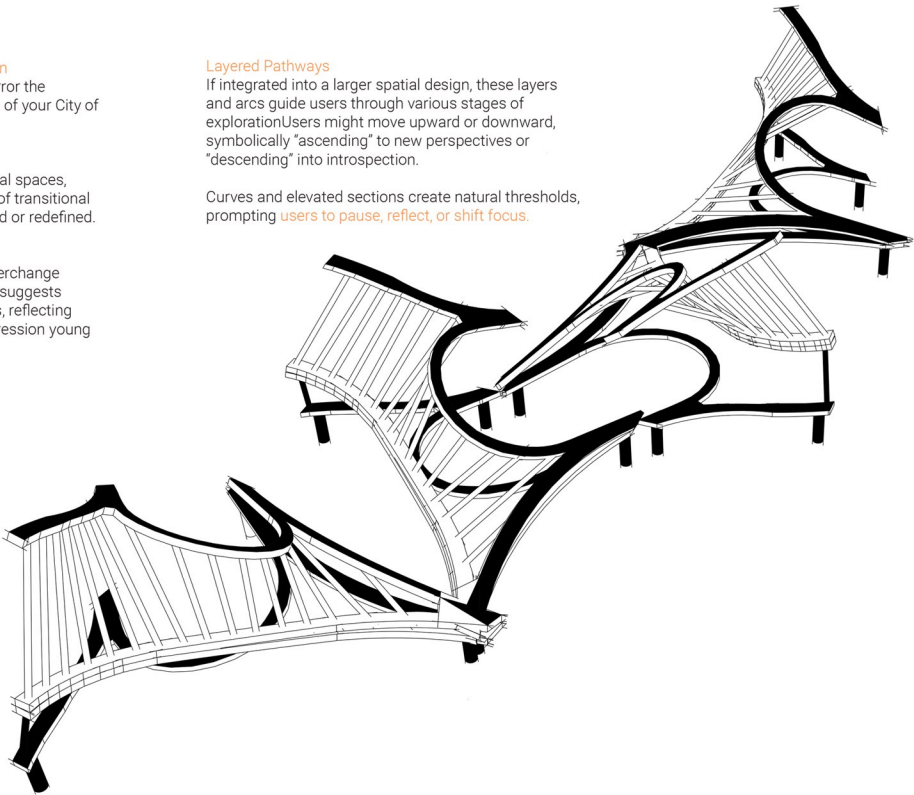
**Metamorphosis & Transformation**  
The shifting, interwoven lines mirror the evolutionary process at the heart of your City of Metamorphosis concept.

**Liminal Cartography**  
By mapping "in-between" or liminal spaces, the structure embodies the idea of transitional zones where identities are formed or redefined.

**Spaghetti Junction Influence**  
Referencing the multi-layered interchange the structure's complex weaving suggests numerous pathways and choices, reflecting the freedom and non-linear progression young people experience.

**Layered Pathways**  
If integrated into a larger spatial design, these layers and arcs guide users through various stages of exploration. Users might move upward or downward, symbolically "ascending" to new perspectives or "descending" into introspection.

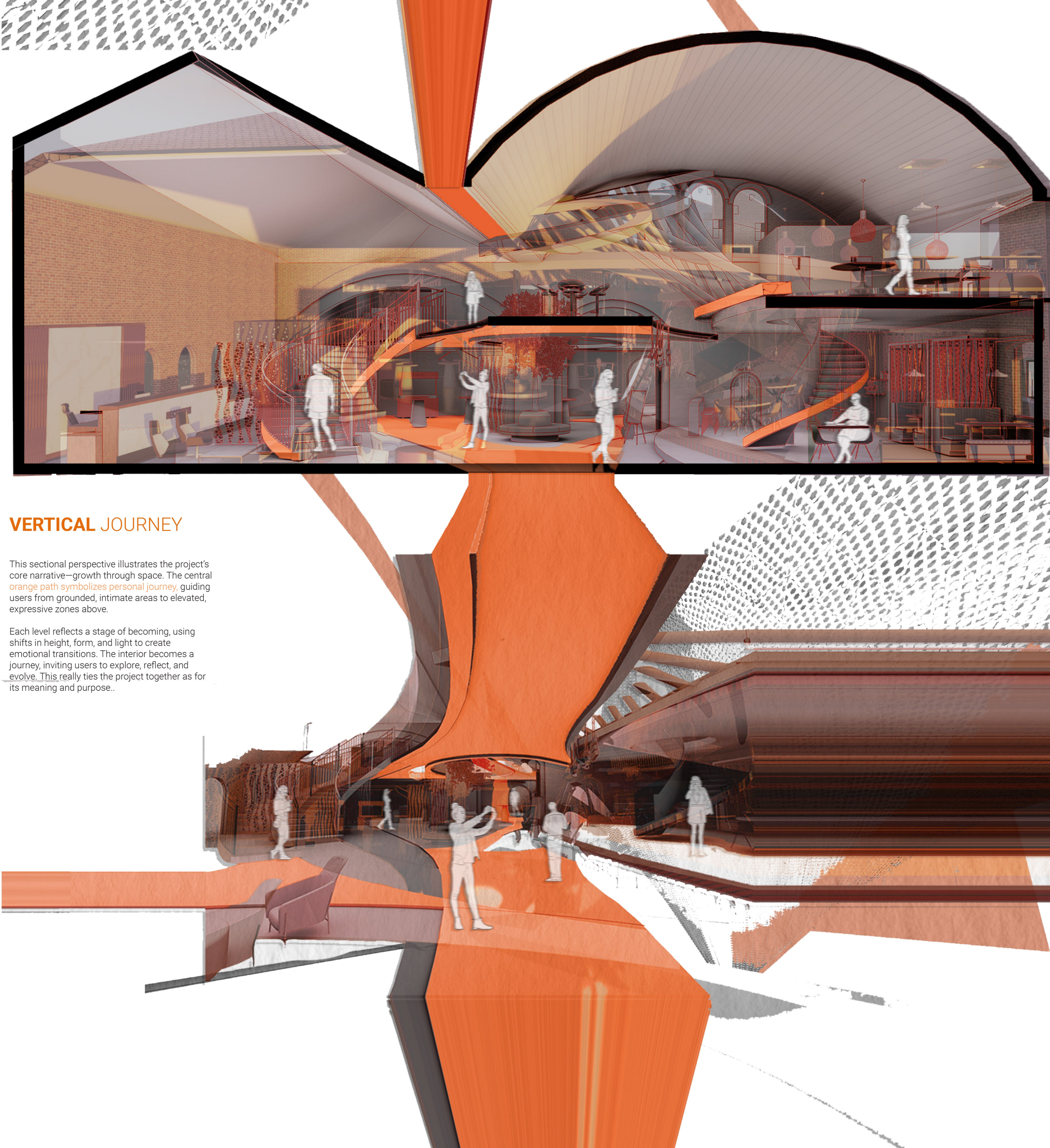
Curves and elevated sections create natural thresholds, prompting users to pause, reflect, or shift focus.



MODELLING STRUCTURE

This final concept model iteration emphasizes refined joinery techniques that articulate the narrative of The Junctions of Becoming. Each connection is meticulously crafted to symbolize the fluidity and transformation inherent in the design concept, reflecting the journey of growth and exploration. The joinery not only enhances structural cohesion but also serves as a visual metaphor for interconnected pathways, embodying moments of pause, tension, and release throughout the space.

Through these photographs, the intricate relationships between form, materiality, and spatial experience are captured, highlighting how each element supports the narrative of metamorphosis and discovery.



VERTICAL JOURNEY

This sectional perspective illustrates the project's core narrative—growth through space. The central orange path symbolizes personal journey, guiding users from grounded, intimate areas to elevated, expressive zones above.

Each level reflects a stage of becoming, using shifts in height, form, and light to create emotional transitions. The interior becomes a journey, inviting users to explore, reflect, and evolve. This really ties the project together as for its meaning and purpose..