



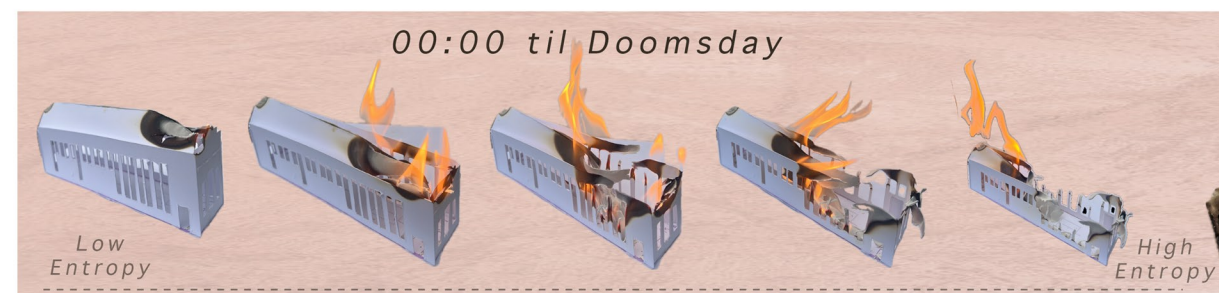
By Jasmine Alexis

Proposal

89 seconds: crisis demands collaboration.

The Phoenix Project transforms Birmingham's Derwent House into a climate crisis command centre. Inspired by the urgency of the Doomsday Clock, it proposes a network of adaptive "War Rooms" where professionals collaborate on real-time environmental strategies. Through experimental materials, symbolic spatial decay, and public engagement zones, the project re-imagines interior architecture as a tool for collective action and future resilience.

Destruction as a Design Process



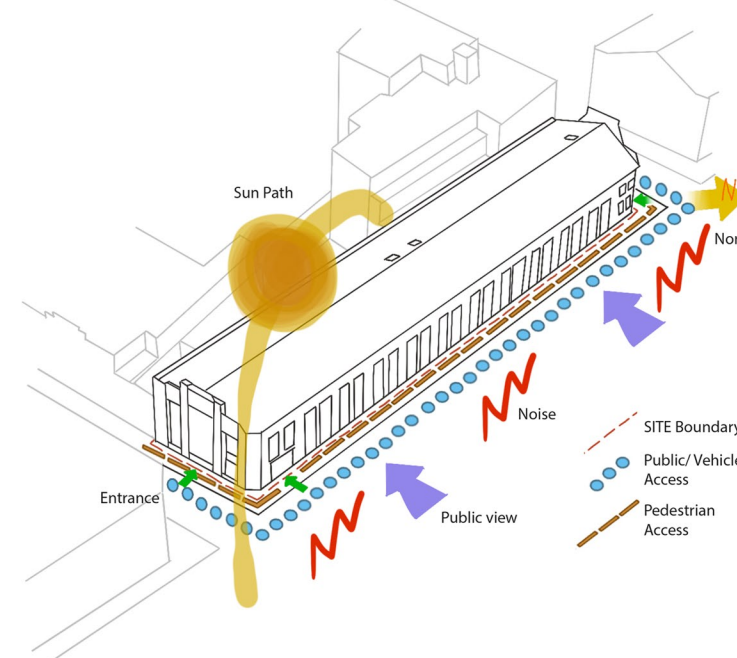
What Was

Ruins

The Beautiful

Rot

Derwent House



Nature as the Architect

Reclaimed by Nature



Dear Earth, the next chapter is yours...

This was never just about architecture. It was about time, about how buildings, like empires and intentions, will one day fall.

I began with strategy, with systems built to control, to plan, to survive. But strategy fractures. Blueprints burn. I watched as walls decayed, as structure gave way, and through that destruction, I began to see something else, something more honest.

Decay is not the opposite of design. It is part of it. It is the quiet reminder that nothing we make is permanent, but everything we touch leaves a trace. I followed those traces through catacombs of memory, through burnt staircases and overgrown rooms, until I arrived here, at the intersection of collapse and growth.

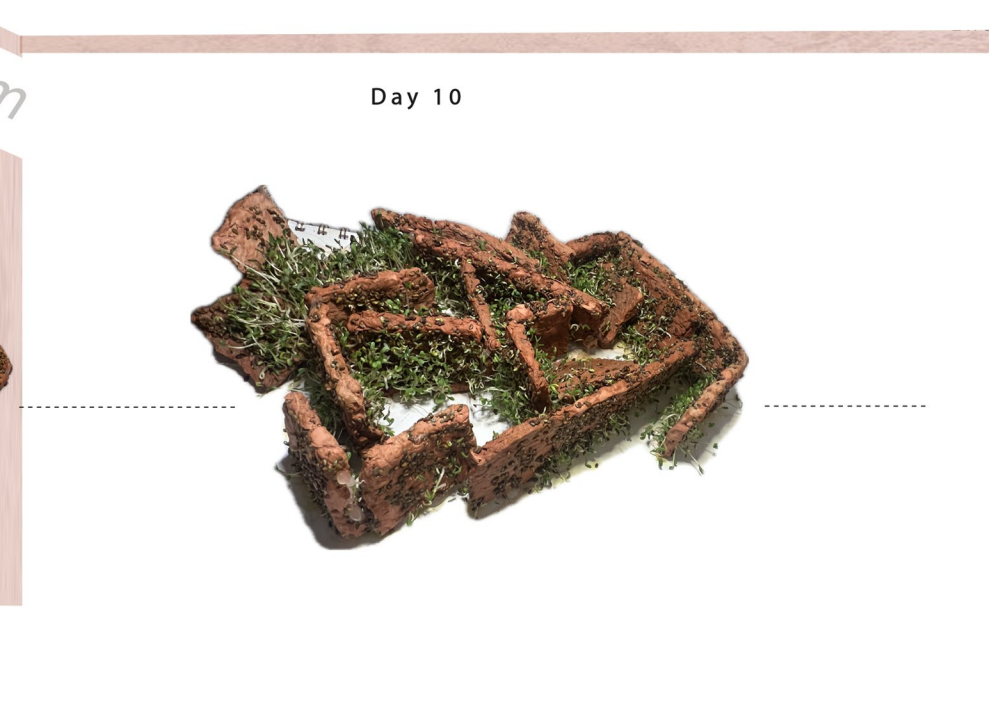
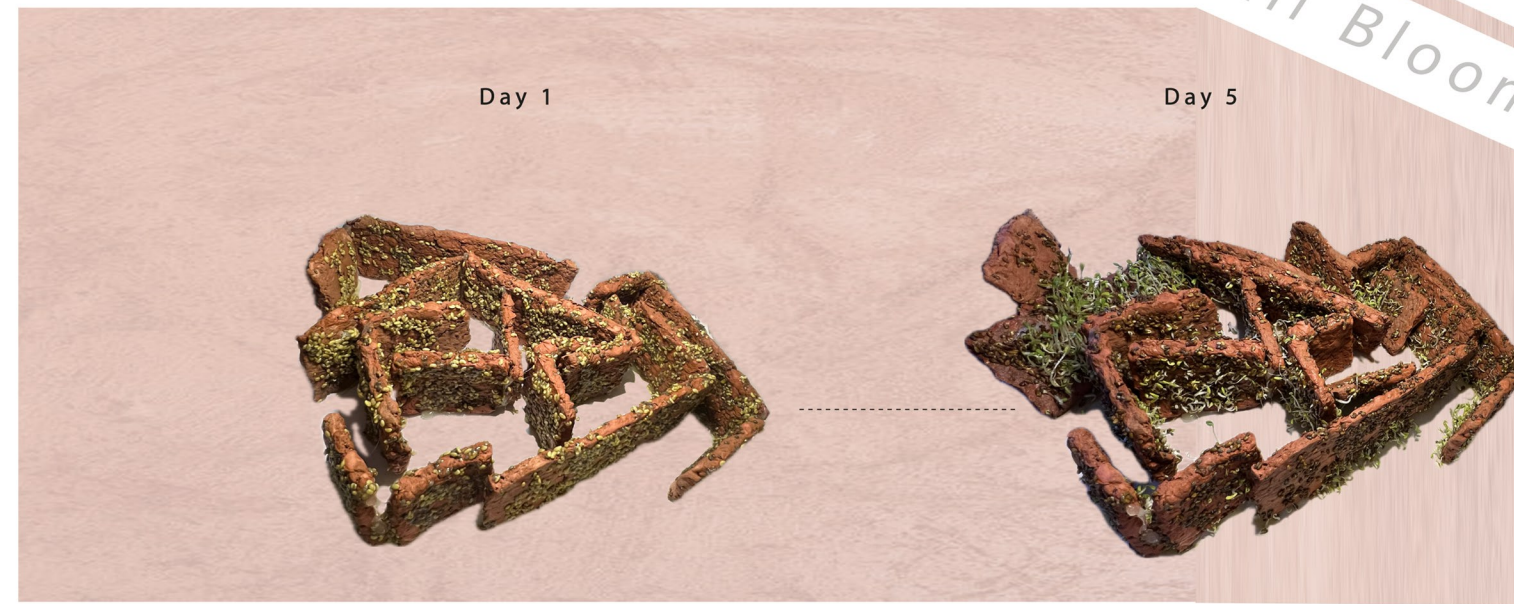
This is where nature returns, not violently, but patiently. In seed, in soil, in light. It does not ask permission. It simply waits. And when the dust settles, it blooms.

This is what I've learned. We do not preserve the world by holding on. We preserve it by letting go, by planting for futures we will never see, by designing for disappearance, by gifting something gentle to what comes next.

So now, as the countdown reaches zero, and what we ruin begins to bloom again, I leave this space not as a warning but as a promise. A seed. A beginning.

Bio- degradable Walls

Will Bloom

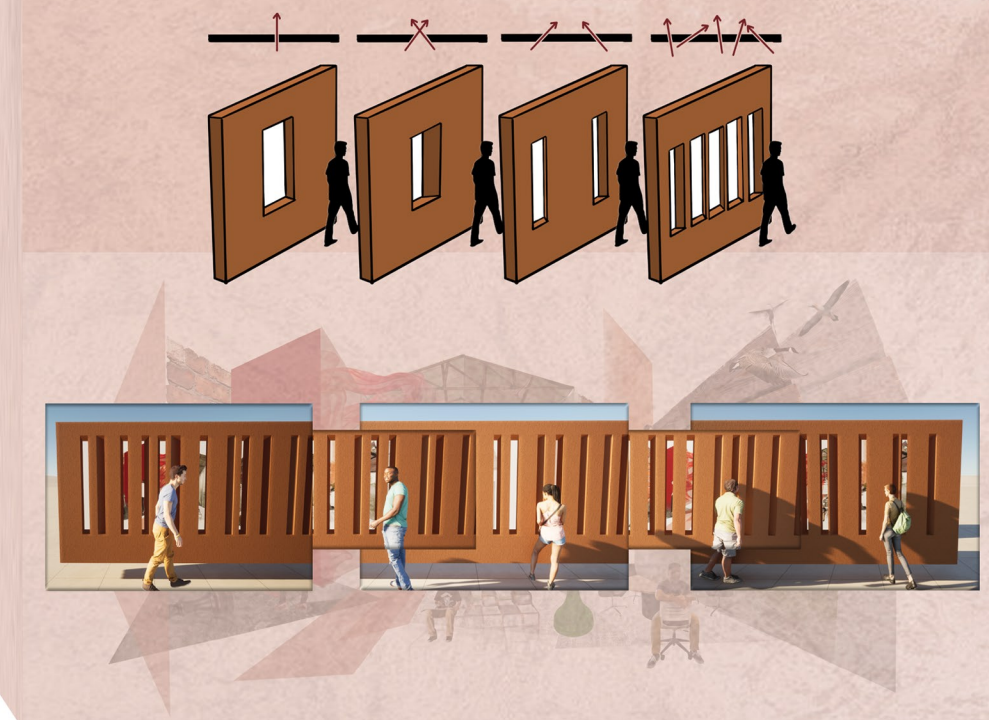


Lost Knowledge Re-discovered

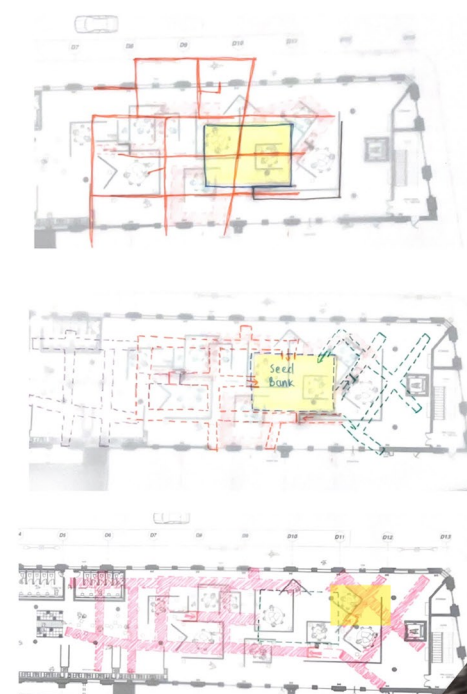
This project is inspired by the theory that civilisation rises and falls in cycles. Discoveries beneath the Pyramids of Giza suggest a lost advanced civilisation once existed, challenging what we know about evolution and history. There have been civilisations like ours before, and there will be ones after. My building is not just a message of this cycle but a vault of knowledge to help the next civilisation advance; like Egyptian drawings, its remnants will tell our story.

Again

Permeability & Aperture

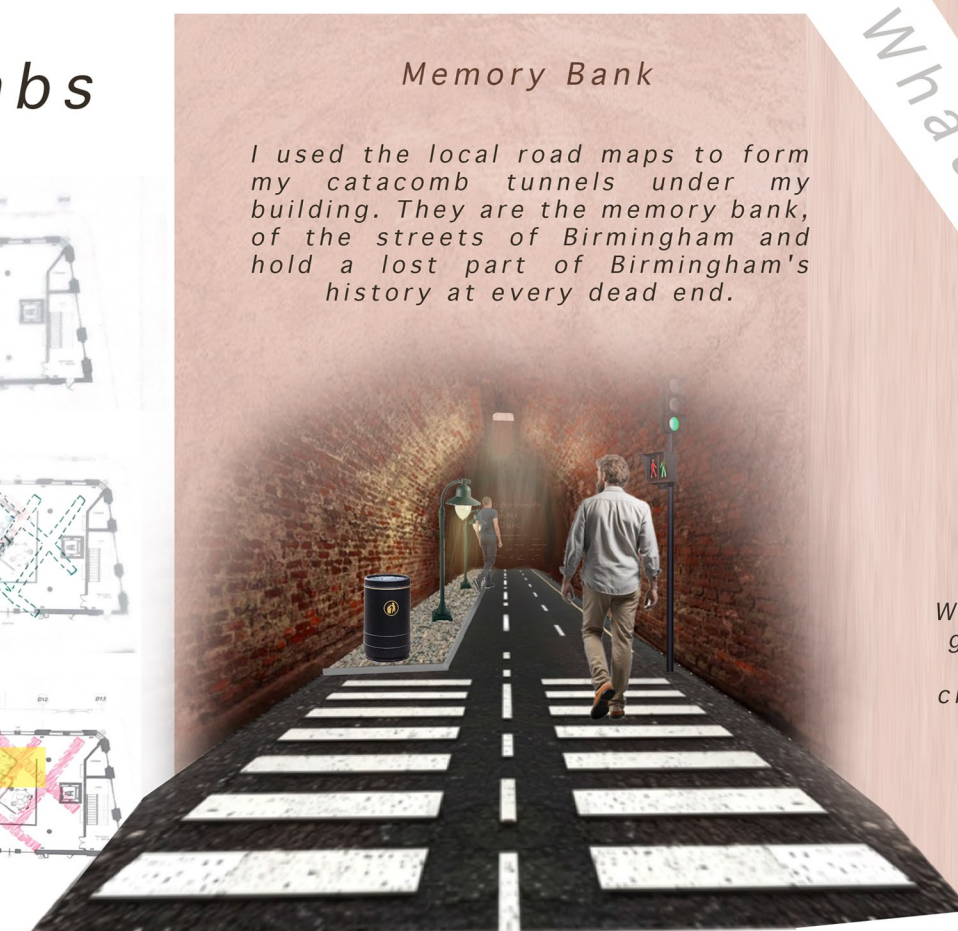


Catacombs



Memory Bank

I used the local road maps to form my catacomb tunnels under my building. They are the memory bank, of the streets of Birmingham and hold a lost part of Birmingham's history at every dead end.



What We

The Eden Archive

What will we gift to the next civilisation?



Seed Bank

Ruin



The Retreat



The Archive Vault

Will Bloom

Ruin

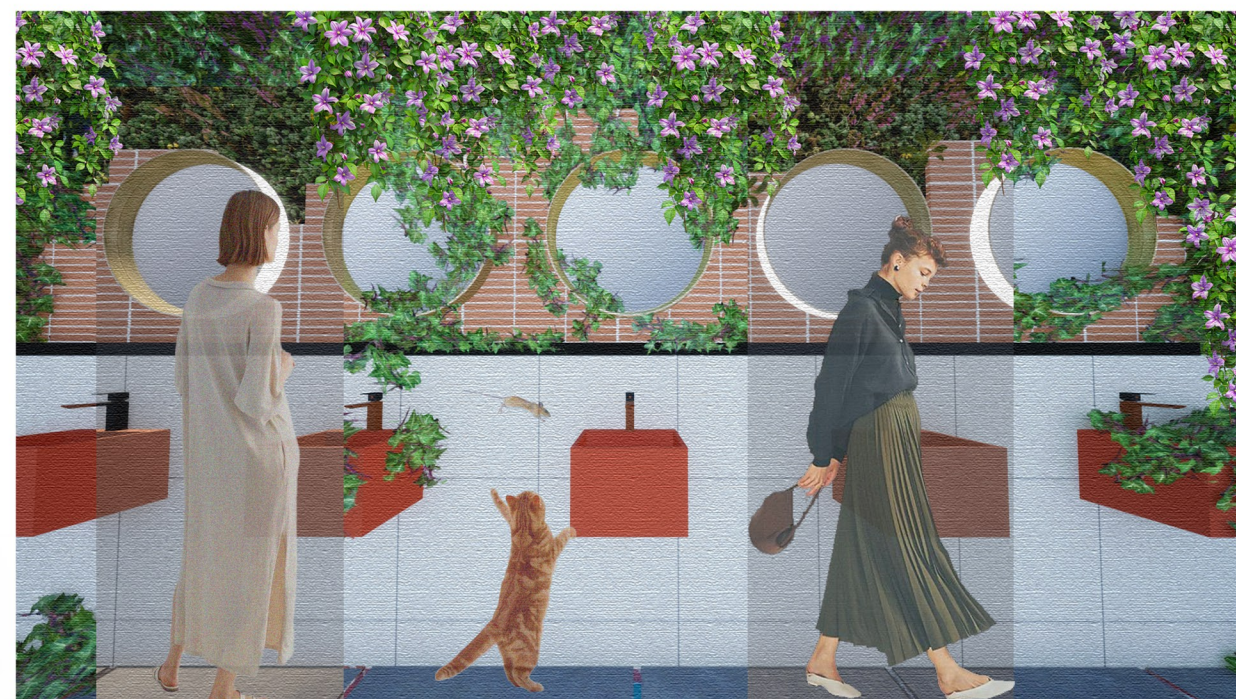


The Retreat



The Archive Vault

Will Bloom



WC

Again



Eden

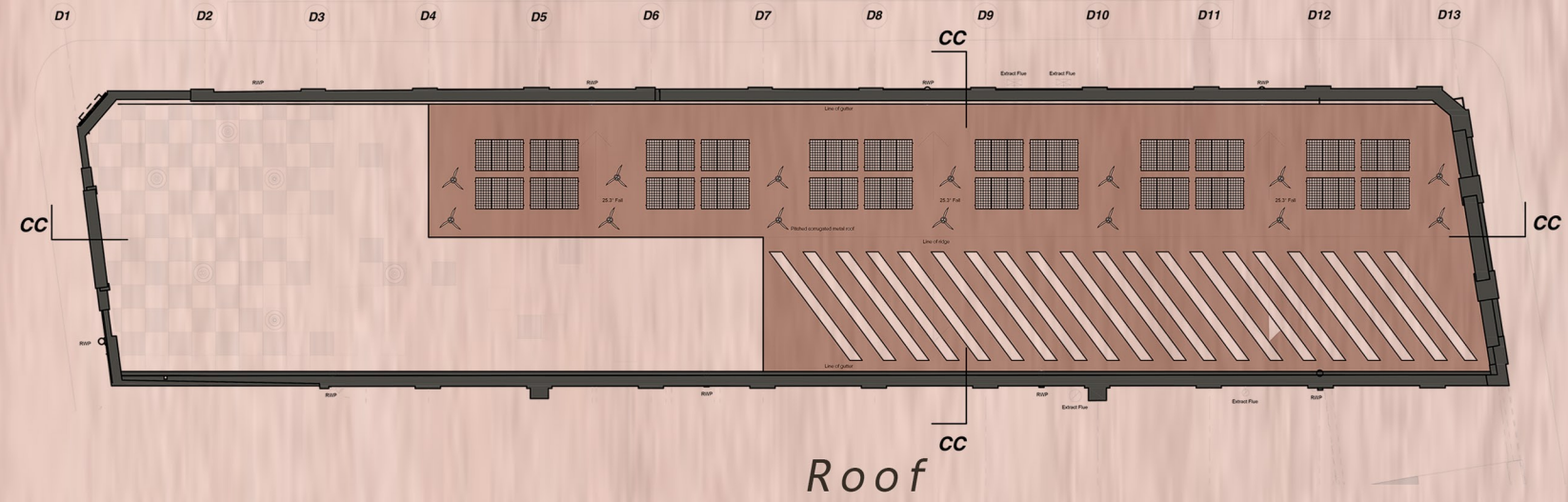


Eden



Devastation gives way to rebirth as cress sprouts from the model's burned remains—nature taking back what was taken away. The work shows how life endures beyond devastation, drawing inspiration from Libeskind's Garden of Exile, which examines displacement and survival through controlled yet uncontrolled growth, and H is for Hanging Gardens, where plants flourish in unexpected areas. Ruin Theory, which holds that architecture is never fully completed but instead changes throughout time, is likewise related to this process. In keeping with Brian Cox's entropy theories—which hold that while deterioration is unavoidable, disorder can give rise to new patterns—this regrowth is an effort to turn the Doomsday Clock backwards. The story moves from ends to new beginnings and from collapse to resilience as a result of this act of rebirth. I recorded this process over the course of 6 days, photographing the growth of cress, spinach, green beans and chives from their speedy germination process.





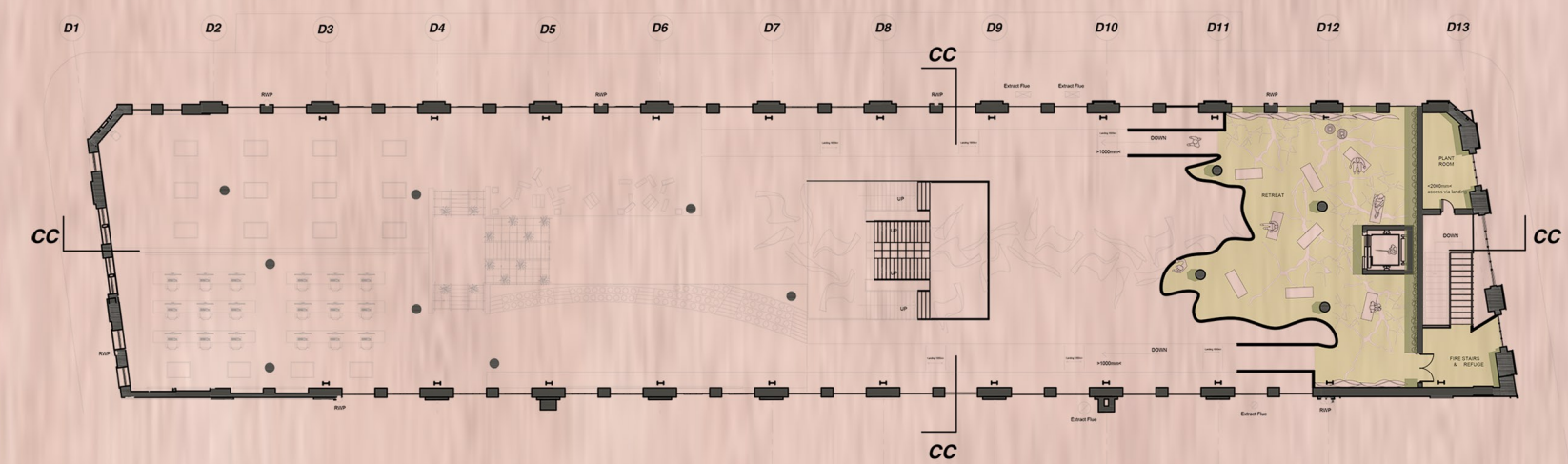
Roof



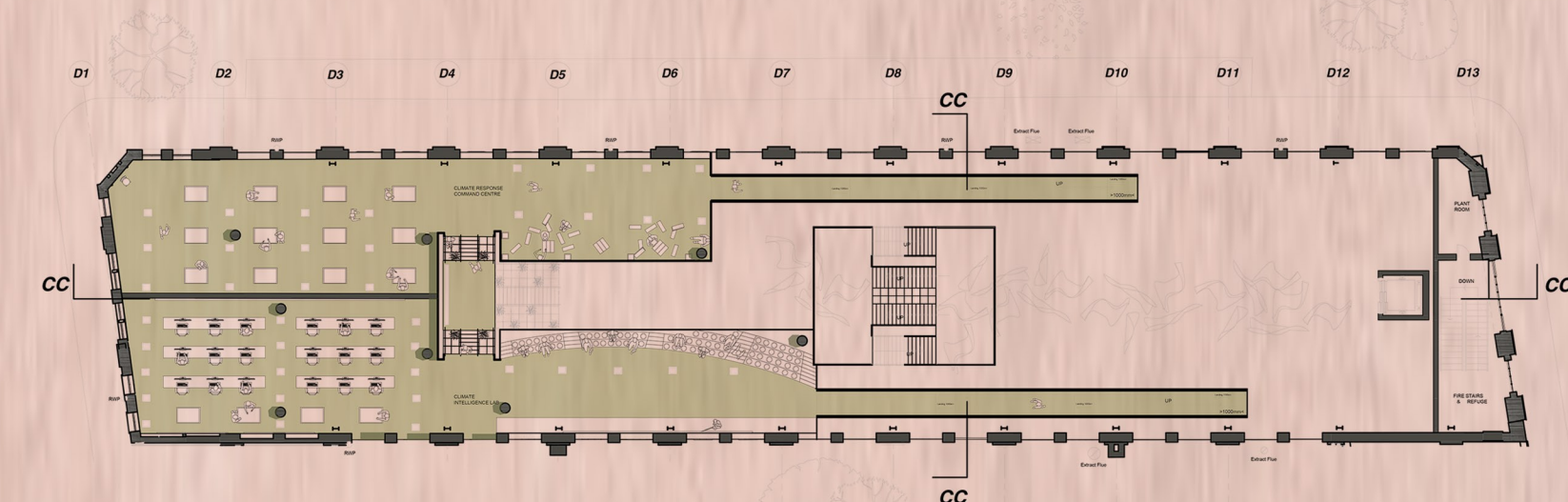
Upper Second Floor



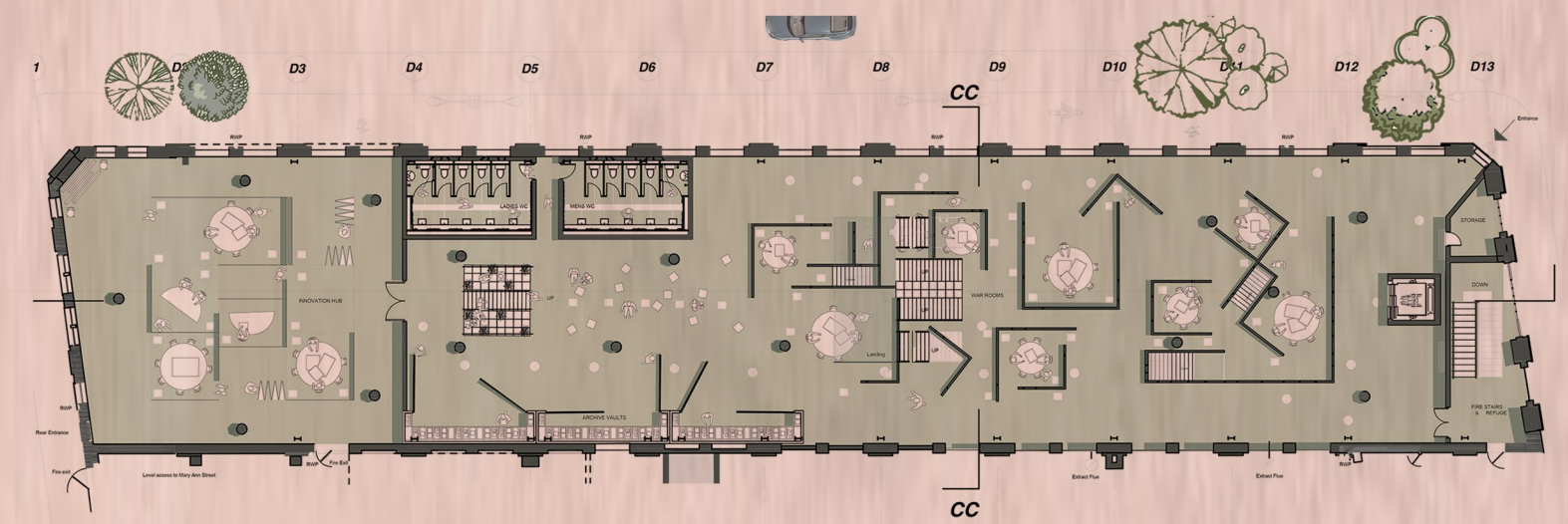
Lower Second Floor



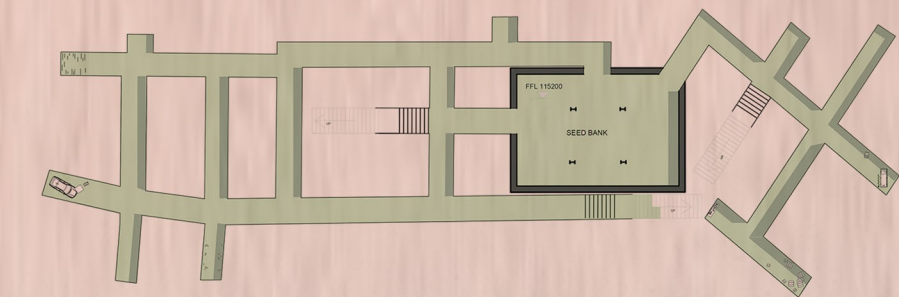
Upper First Floor



Lower First Floor



Ground Floor



Basement



Section DD

To The Next Civilisation,

If you are reading this, the world as I knew it has already changed.
I leave behind not instructions, but seeds - tiny vessels of possibility, care,
and memory. This place was born from questions: What do we salvage?
What do we surrender?

Through fire and decay, I watched old systems fall, and in their place,
I chose to plant.

These seeds are my message: that beauty can grow from ruin,
that nature will always return, and that you, like us, will rebuild. Let this
be a gift,
not of answers - but of beginnings.

All the best, Humanity