

WARWICK CO.LIFE

BOLD & PLAYFUL

FLEXIBLE & INDIVIDUALISTIC
the future of living...

Warwick Co.Life, a new co-housing proposal coming to Coventry city centre! Rooted in providing comfortable and functional spaces for an intentional co-living community to support and live amongst one another. Enabling them to create solid, long lasting relationships, whilst also saving time, energy and resources to live in a more sustainable and eco-effective environment.



LOCATED

IN THE HEART OF COVENTRY...
REDUCING YOUR CARBON FOOTPRINT...
... WE NEED TO RE-UNITE A SEGREGATED SOCIETY

The context of Warwick Co.Life is crucial and applicable to many co-housing schemes. This central location was selected to ensure the community is connected to the wider community, reducing feelings of isolation and loneliness. The location also enables fantastic accessibility to public transport and there are a huge range of facilities in walking distance, reducing the carbon footprint of residents on site.

KEEPING RESIDENTS CONNECTED

REDUCING ISOLATION AND LONELINESS

The current crisis of segregation in the UK is having an impact on care, affordability and loneliness. It has been found that segregated housing is contributing to 'isolation, unhappiness and ill health'. Highlighting the demand to re-unite society, for a healthier, happier future generation.

LONELINESS CAN BE AS HARMFUL AS SMOKING 15 CIGARETTES A DAY

MENTAL HEALTH PROBLEMS IN YOUNG PEOPLE ARE ON THE RISE

49% OF PEOPLE OVER THE AGE OF 75 LIVE ALONE

SITE IN CONTEXT



FACILITIES RESIDENTS WANT NEARBY...

WANT NEARBY...

The statistics are taken from primary research to gain insight into the facilities people need nearby them, to reduce the amount that they would need to travel.

RANGE OF AGES

6 COUNTRIES
UNITED KINGDOM POLAND
BARBADOS GERMANY
ROMANIA INDIA



70% HEALTHCARE

84% PLACES TO EAT

68% EDUCATION

54% CAR PARK & PETROL STATIONS

46% ENTERTAINMENT

SHOPPING 89%

HOSPITALITY 84%

ENTERTAINMENT 46%

EDUCATION 67%

10 MINUTE WALK TRAIN STATION

EFM



WARWICK CO.LIFE

FLEXIBLE & INDIVIDUALISTIC

BOLD & PLAYFUL

Grow your own fruit and vegetables!
For a healthier, more sustainable lifestyle.

Explore your creative mind in the
Create & Make space...

From joinery to pottery, craft your own little treasures.

A vibrant space to relax...

Chill out with neighbours in this bold & playful living space.

Sharing is caring as they say...

Let's reduce over consuming, by sharing belongings that you don't all need.

It's never too late to learn...

The library is the perfect quiet space to read and relax.

Dinner for one? Why not support your neighbours with a home cooked meal for all...

Saving time, energy and building strong relationships.

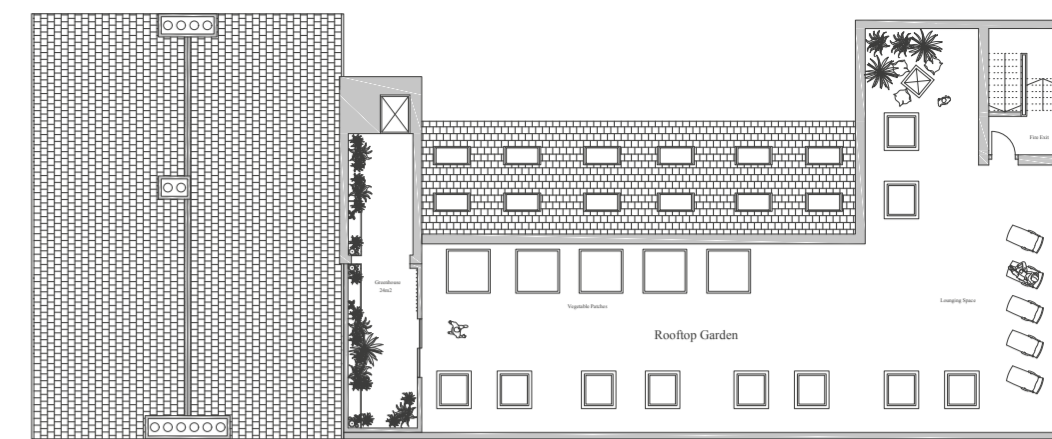


SLIDING WALLS

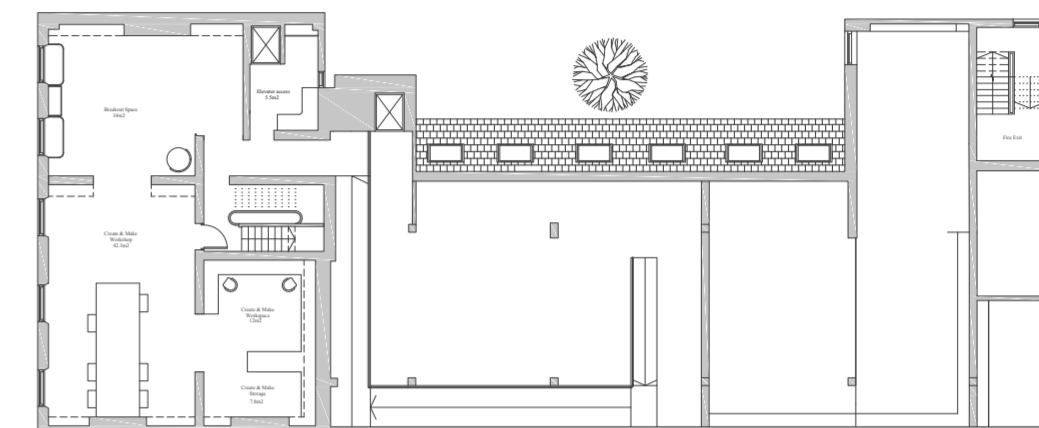
modular unit

THE FLEXI APARTMENTS
you define your space...

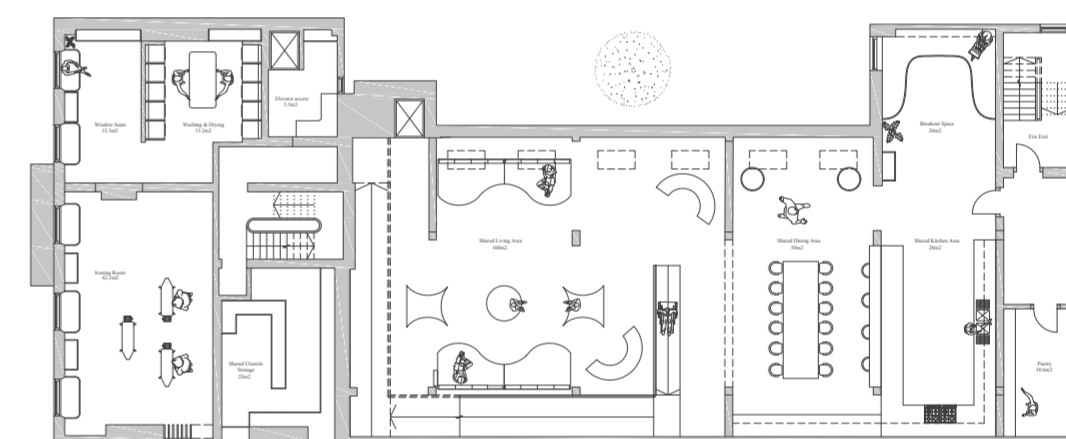
exploded axonometric, not to scale



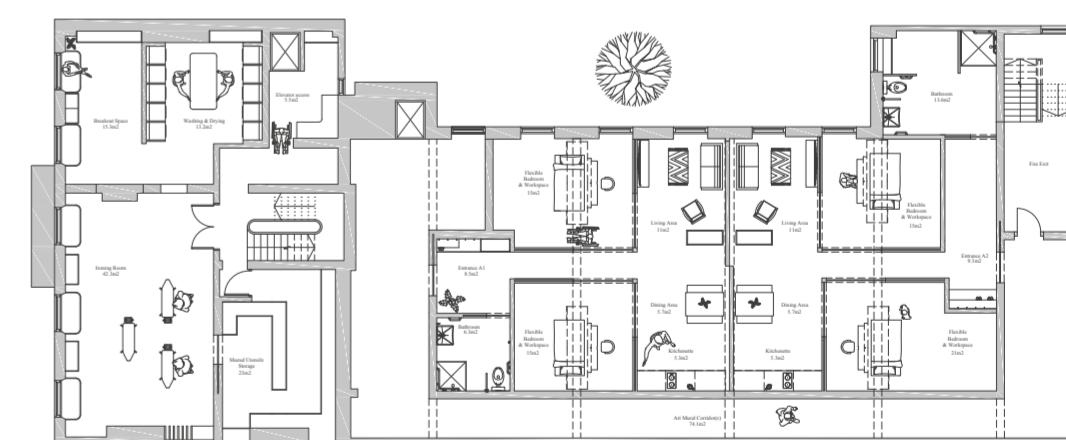
the rooftop



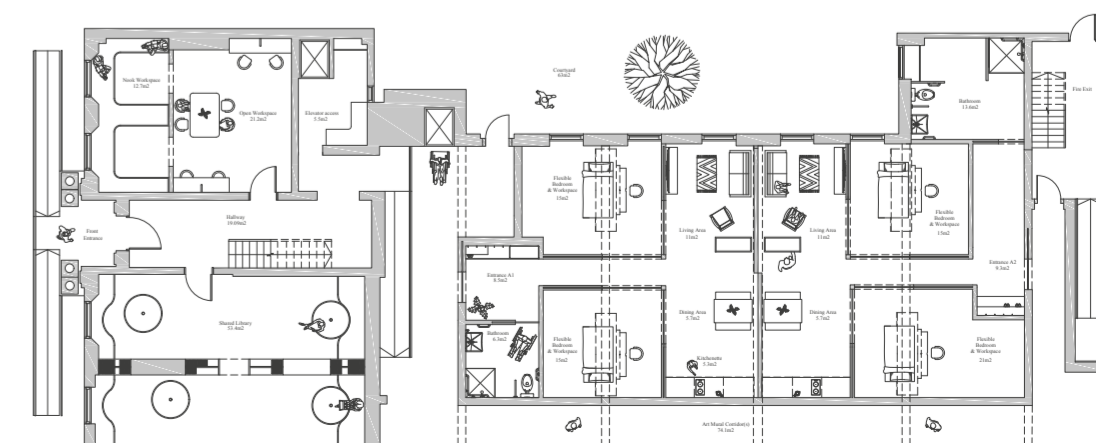
front second floor



rear second floor



first floor



ground floor

plans, not to scale

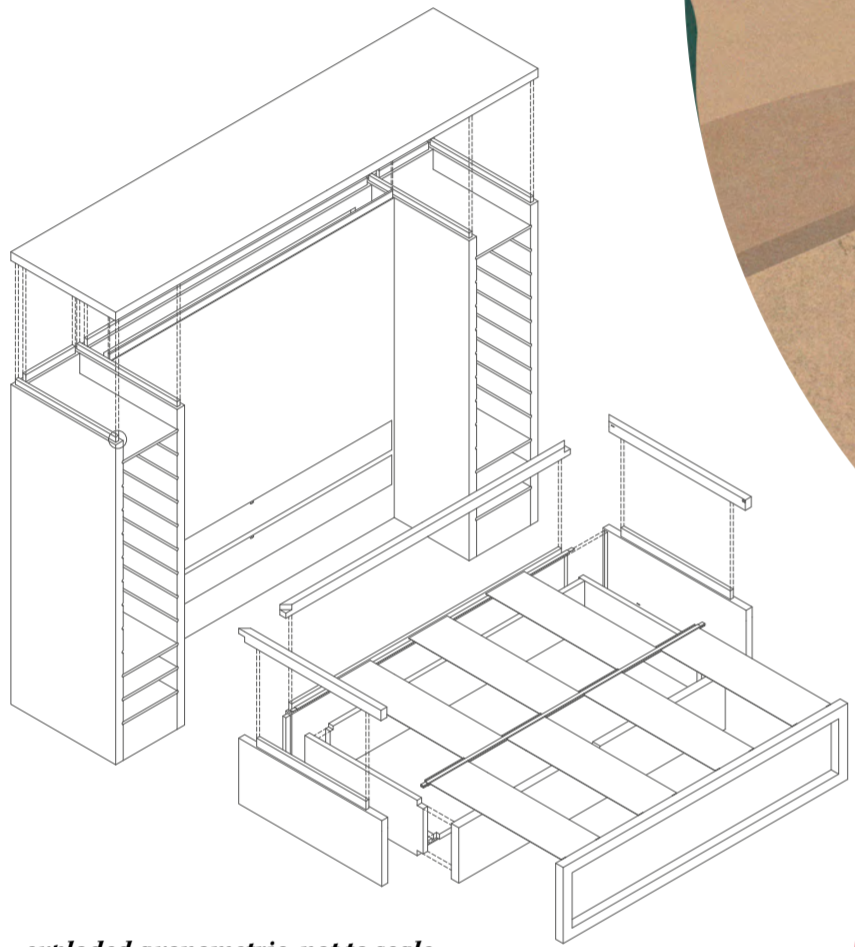


- 1- The Garden
- 2- Breakout space
- 3- Create & Make space
- 4- Shared living room
- 5- Shared dining room
- 6- Shared kitchen
- 7- Laundry room
- 8- Ironing room
- 9- Shared utensils storage
- 10- Flexi Apartments
- 11- Flexi Apartments
- 12- Co-workspace
- 13- Shared library

THE FLEXI APARTMENTS modular unit

MORTISE & TENON

JOINERY AS A METHOD OF CONSTRUCTION



exploded axonometric, not to scale

The construction utilises *mortise and tenon joinery*, a strong and durable type of joinery popular amongst cabinet makers. The use of joinery instead of screws and bolts *reduces the use of artificial materials*, and makes use of the natural materiality.

BIRCH PLYWOOD

NATURAL AND DURABLE MATERIALITY

Birch plywood is the primary material used throughout the flexi apartments. It has been used for the construction of the modular unit. It is *strong and durable*, increasing the life span of the product. Whilst also *creating a warm and cosy aesthetic for tenants* to define the unit and walls themselves, ensuring a *blank slate for everyone*.



SAME SPACE, NEW NARRATIVE

modular unit

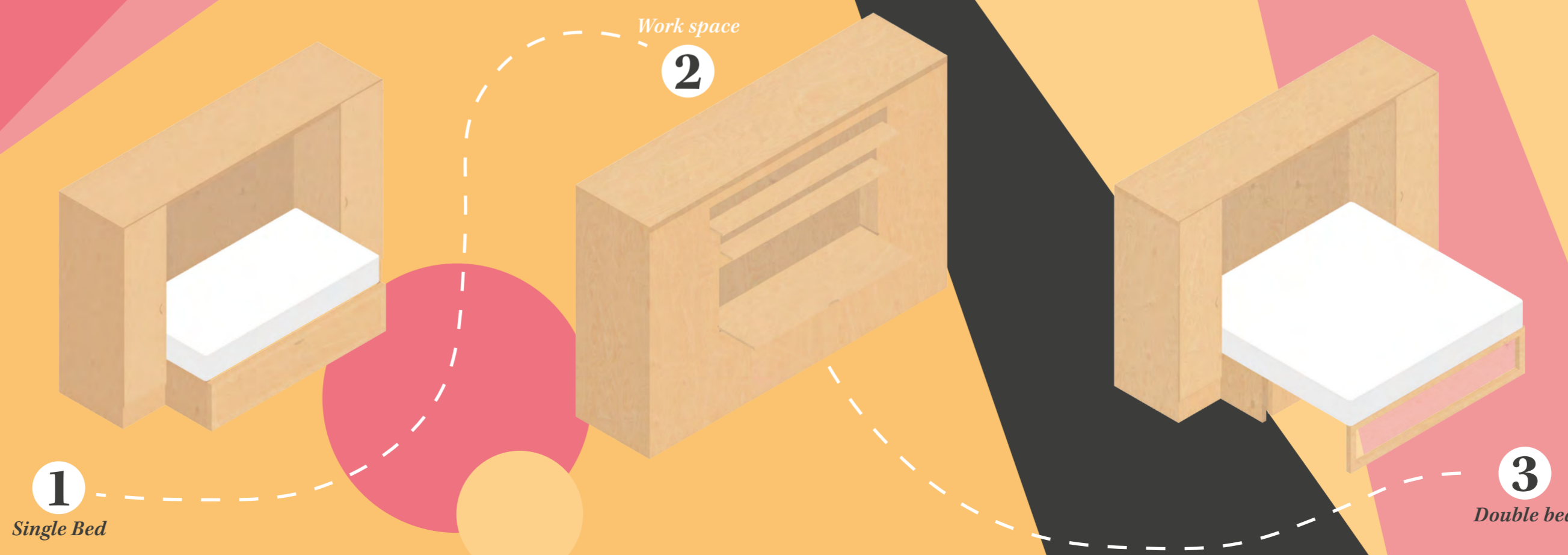
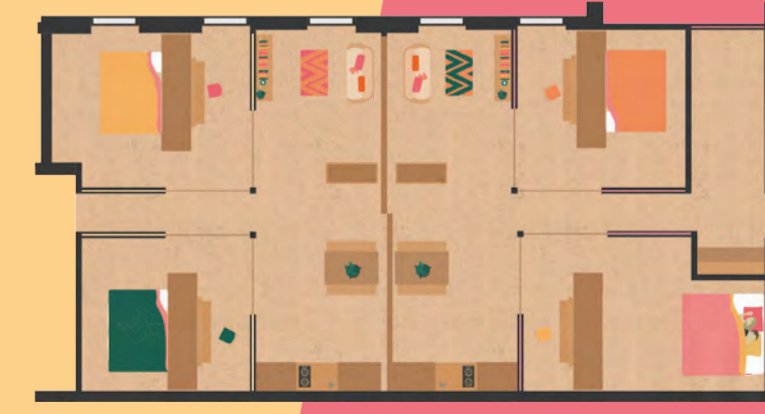
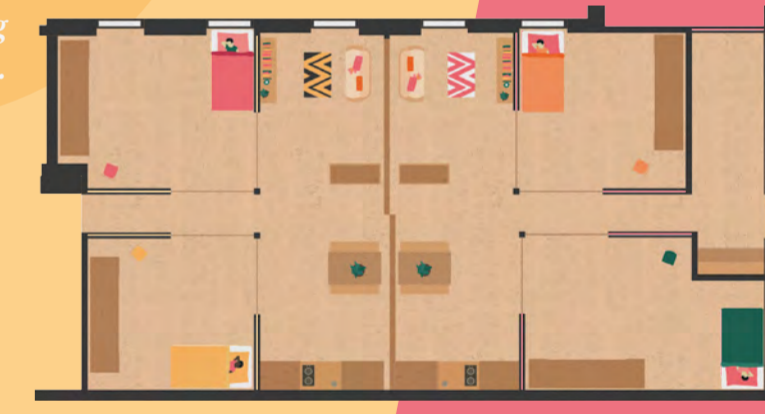
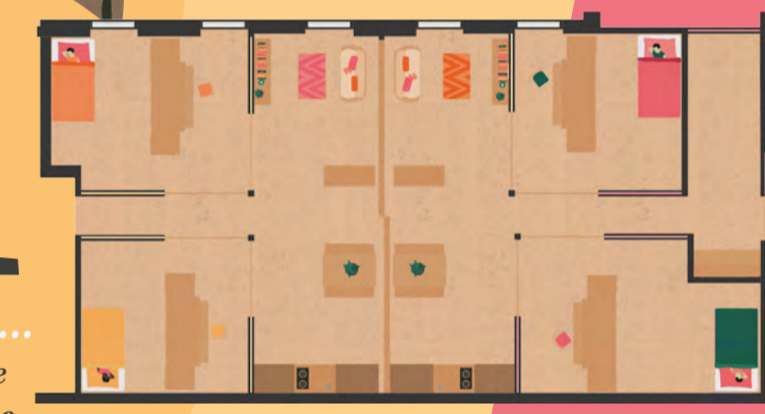
creating a flexible home

modular unit

The *Modular Unit* is a consciously sustainable furniture unit, from its *function to construction*. Offering residents with an optional furniture piece that can be *functioned as a single bed, double bed, wardrobe and workspace*. The vast elements embedded in the design define it as a long lasting piece for residents, possibly *reducing their need to consume other furniture items for a long time*. The *joinery and materiality* also echoes the sustainable ethics of this piece, using *mortise and tenon joints and birch plywood*.



11 possible layouts...
Take a look at 4 possible ways to define your space using the modular unit... a timeless space forming tool.



plans, not to scale

WARWICK CO.LIFE

FLEXIBLE & INDIVIDUALISTIC

BOLD & PLAYFUL

THE FLEXI APARTMENTS

sliding walls

A sliding wall has been placed between the two apartments on the ground and first floor. This is to ensure greater flexibility in the private spaces, the wall could be opened up to connect the two apartments for a social gathering, or even for friends and families looking to take over two apartments, due to a growth in numbers. Making it a very flexible and adaptable space.

MAKE ONE HOME, TWO

The T-Channel is recessed into the floor, out of sight. This element enables the wall to slide seamlessly.

T-channel, not to scale

Section cut through of both walls, not to scale

a seamless sliding mechanism...

sliding rail, not to scale

sliding

WALL

BATTLING ISOLATION & LONELINESS

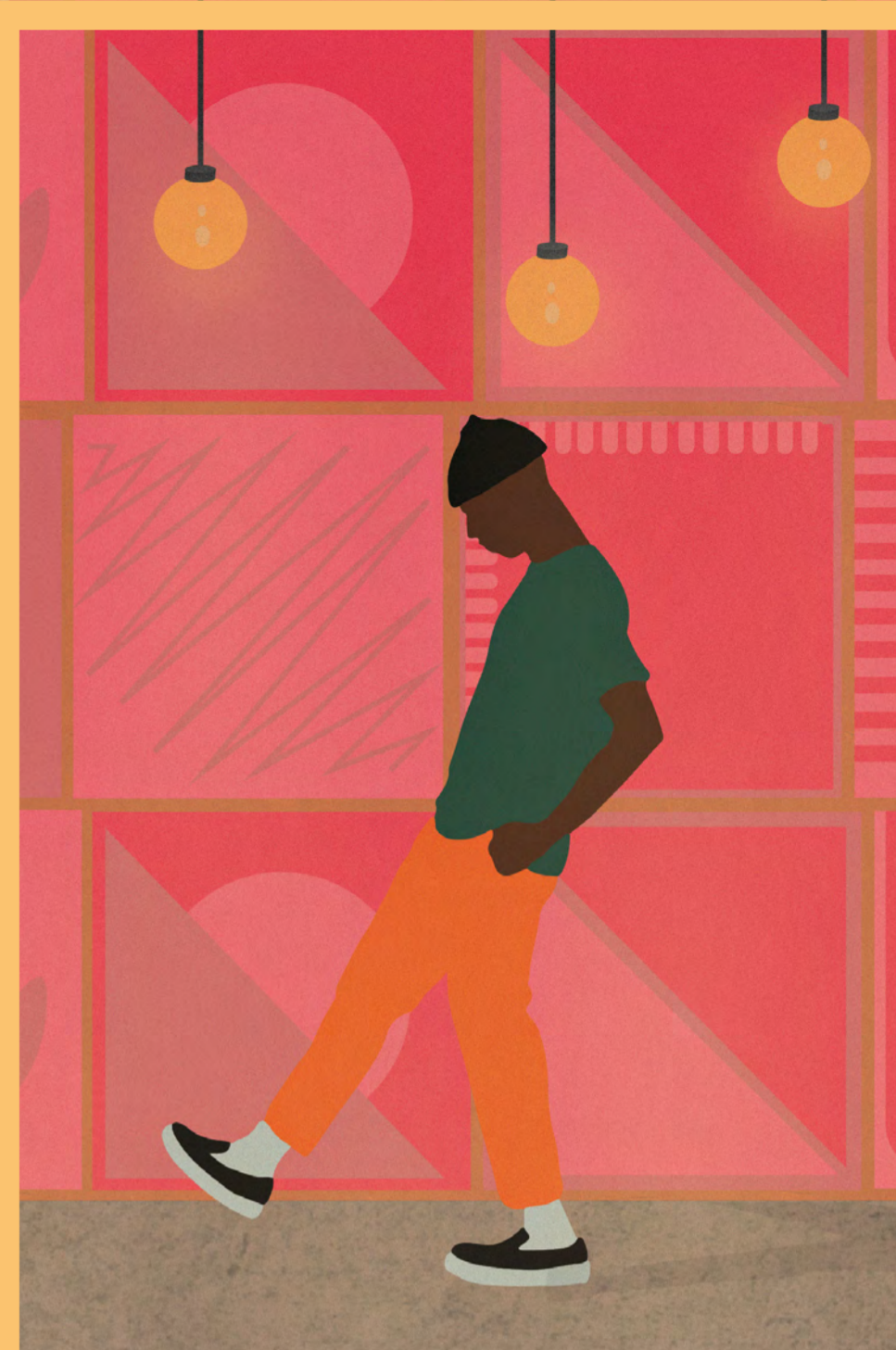
Co-Housing is already a more sociable way to live, and in a world with growing statistics related to isolation and depression ensuring people are connected is so important. The sliding wall enables a greater sense of connection to neighbours, perhaps if people are looking for a more intimate way to socialise rather than using the dedicated social spaces.

THE NEIGH- BOURS EVENING

connecting the community

The Neighbours Evening, demonstrates how two apartments have been opened up for a social gathering. The living space has been opened up to create a dance floor for the evening, enabling friends and family more space to spend quality time and make memories.





WARWICK
CO. LIFE
BOLD & PLAYFUL
FLEXIBLE & INDIVIDUALISTIC

