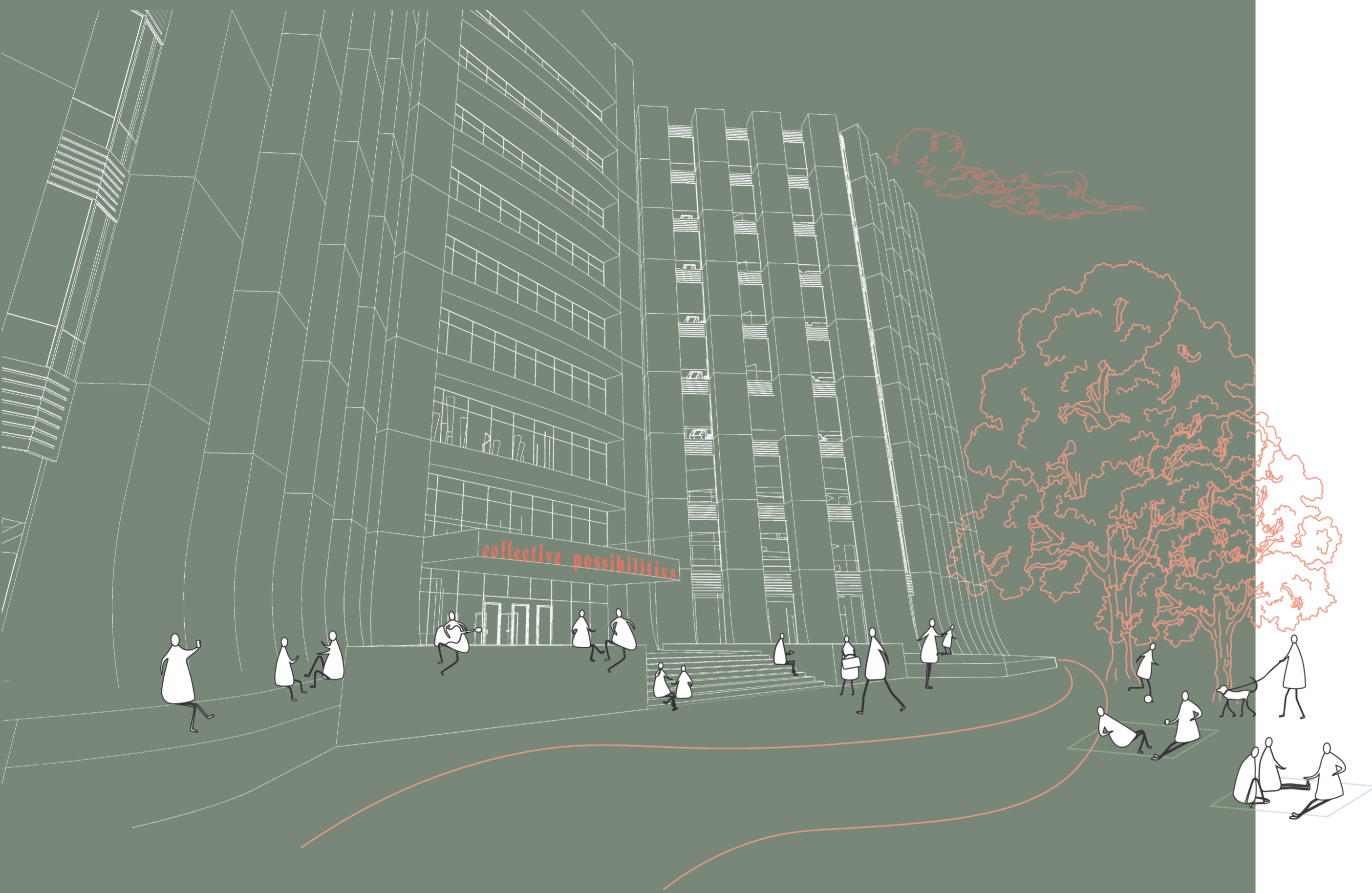


collective possibilities

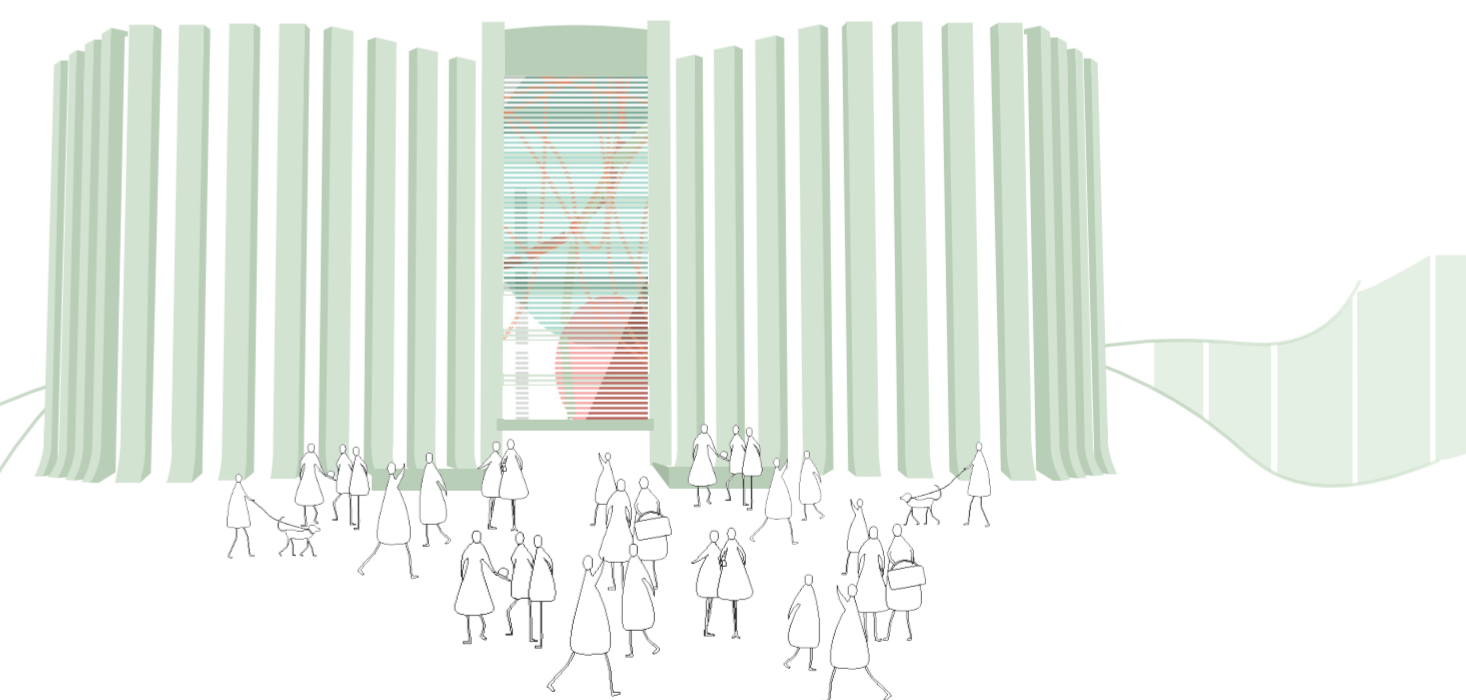
Responding to the future landscape of healthcare. Exploring the Living Lab as an evolutionary environment that facilitates cross disciplinary collaboration, in response to the need to reduce healthcare inequalities.

Reforming healthcare, the Living Lab, focuses on gathering, synthesis and exploration of data. It provides an environment promoting human value to reduce healthcare inequalities. Entitled 'Collective Possibilities', the evolutionary nature of research answers to the 'possibilities', while 'collective' highlights the promotion of cross disciplinary collaboration.

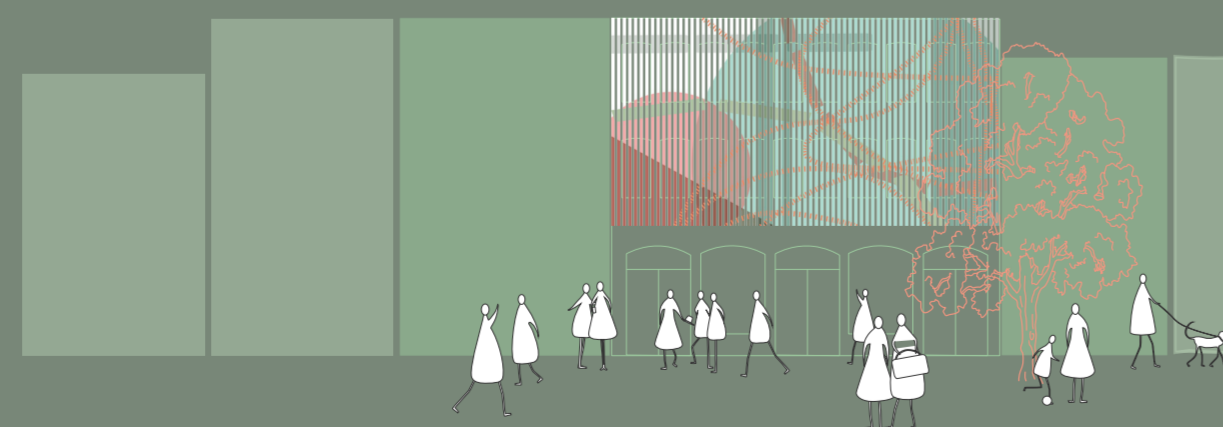
Embracing diversity and rebuilding trust between the public and healthcare providers. The project reaches numerous communities through positive engagement; beginning with the Connection Hub, located in Poole high street. This initial connection point provides the opportunity to engage the public and encourage them to participate in the larger research program.



External approach via activated public space



Connection Hub unifies community connection, transforming redundant high street spaces



Statement of Intent.

Creating an environment where human value is promoted to embrace diversity and rebuild trust between the public and healthcare providers.

The initiative advocates the Living Lab as a voice of change. Starting a movement that will elevate access to, and understanding of, health and well-being. With the unique diversity of individuals needs represented and promoted.

De-intimidating and re-addressing the power dynamic between authorities, professionals and the public.

The project will be an intellectual powerhouse. Focusing on the gathering, synthesis and exploration of data. Opening access to a network of partners, researchers and academics to transform the Living Lab into a machine to produce knowledge in response to the need to reduce healthcare inequalities.

Creating a self sustaining test bed of innovation that facilitates co-production and cross disciplinary collaboration.

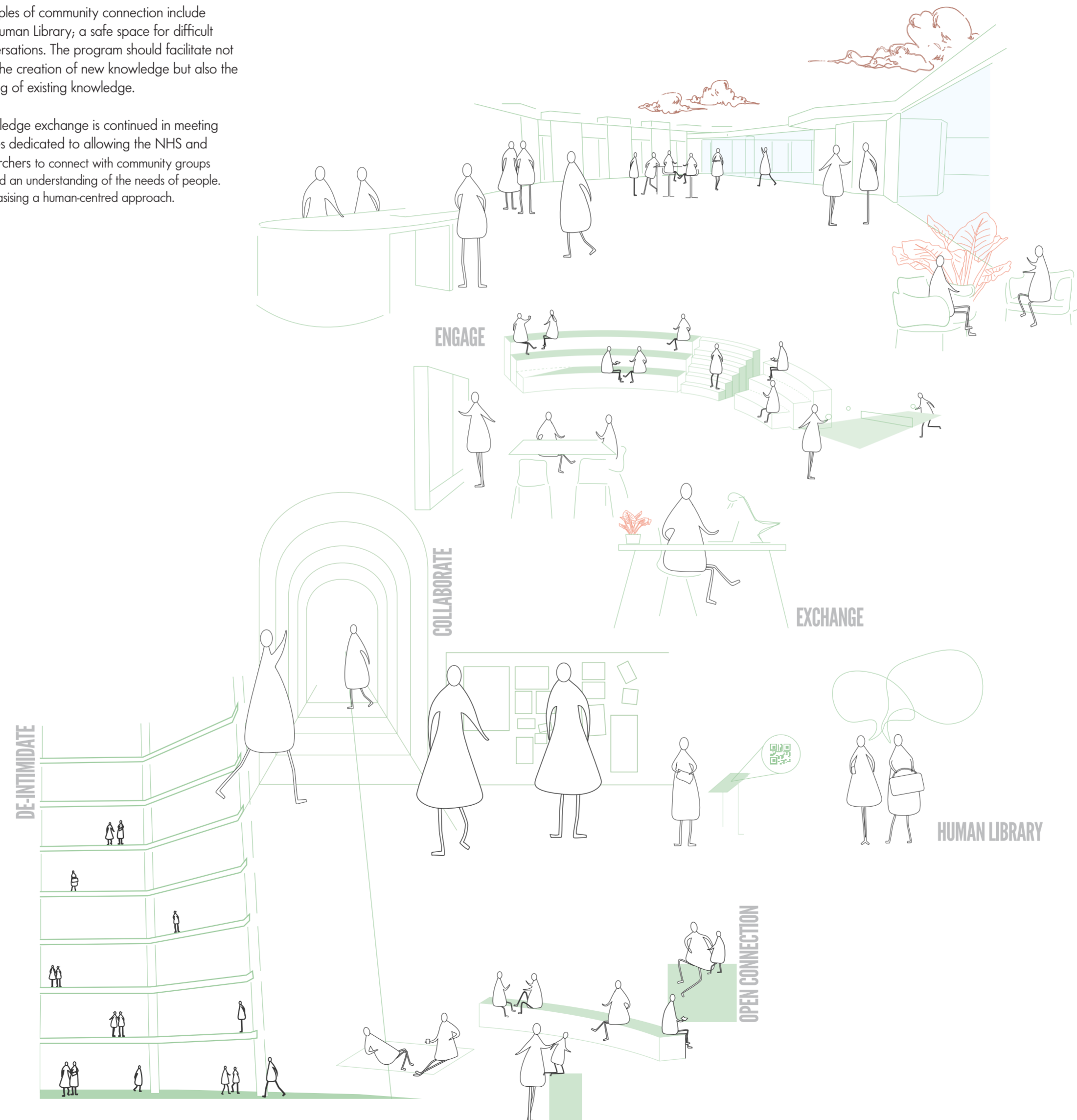
Diverse Program.

The building's program is uniquely diverse. These diverse elements are required to create a space conducive to cross contact between parties; and the creation of a mutually beneficial environment to support the advocacy of change, innovation, and rebuilding of trust between parties.

This includes work spaces for research; public spaces to engage and connect; community spaces that actively encourage public ownership.

Examples of community connection include the Human Library; a safe space for difficult conversations. The program should facilitate not only the creation of new knowledge but also the sharing of existing knowledge.

Knowledge exchange is continued in meeting spaces dedicated to allowing the NHS and researchers to connect with community groups to build an understanding of the needs of people. Emphasising a human-centred approach.



Exhibition space to promote and engage



Tea point acts as a focal point for collisions



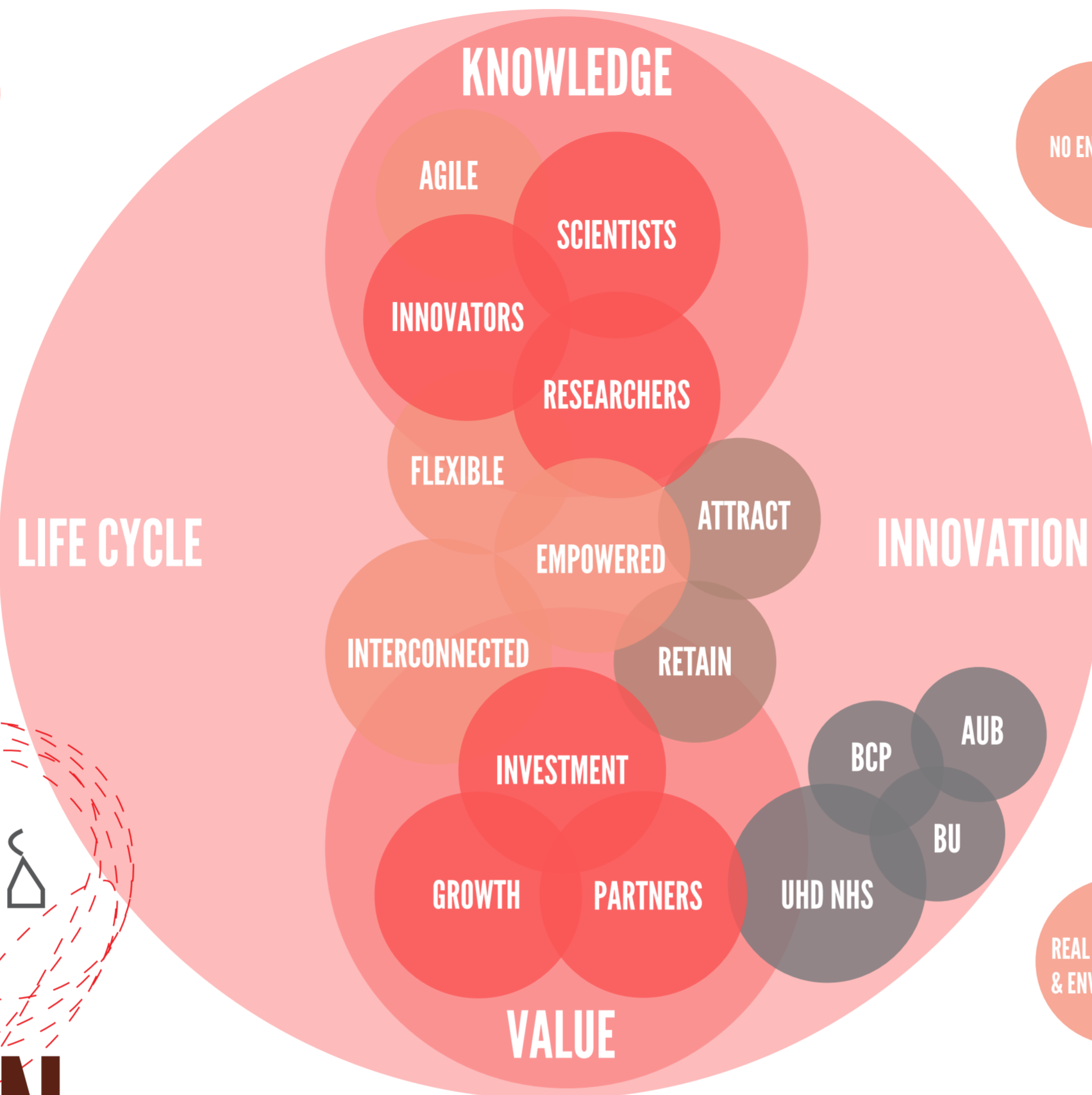
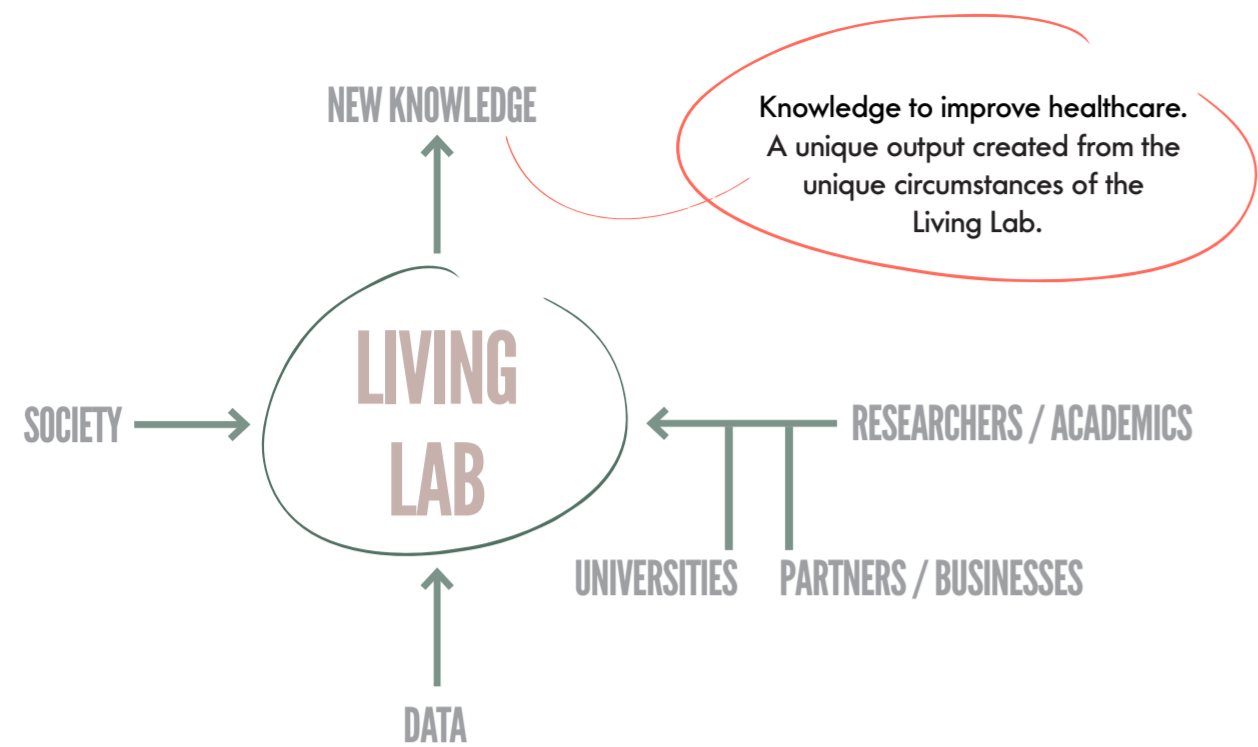
New connection routes increase collision opportunities



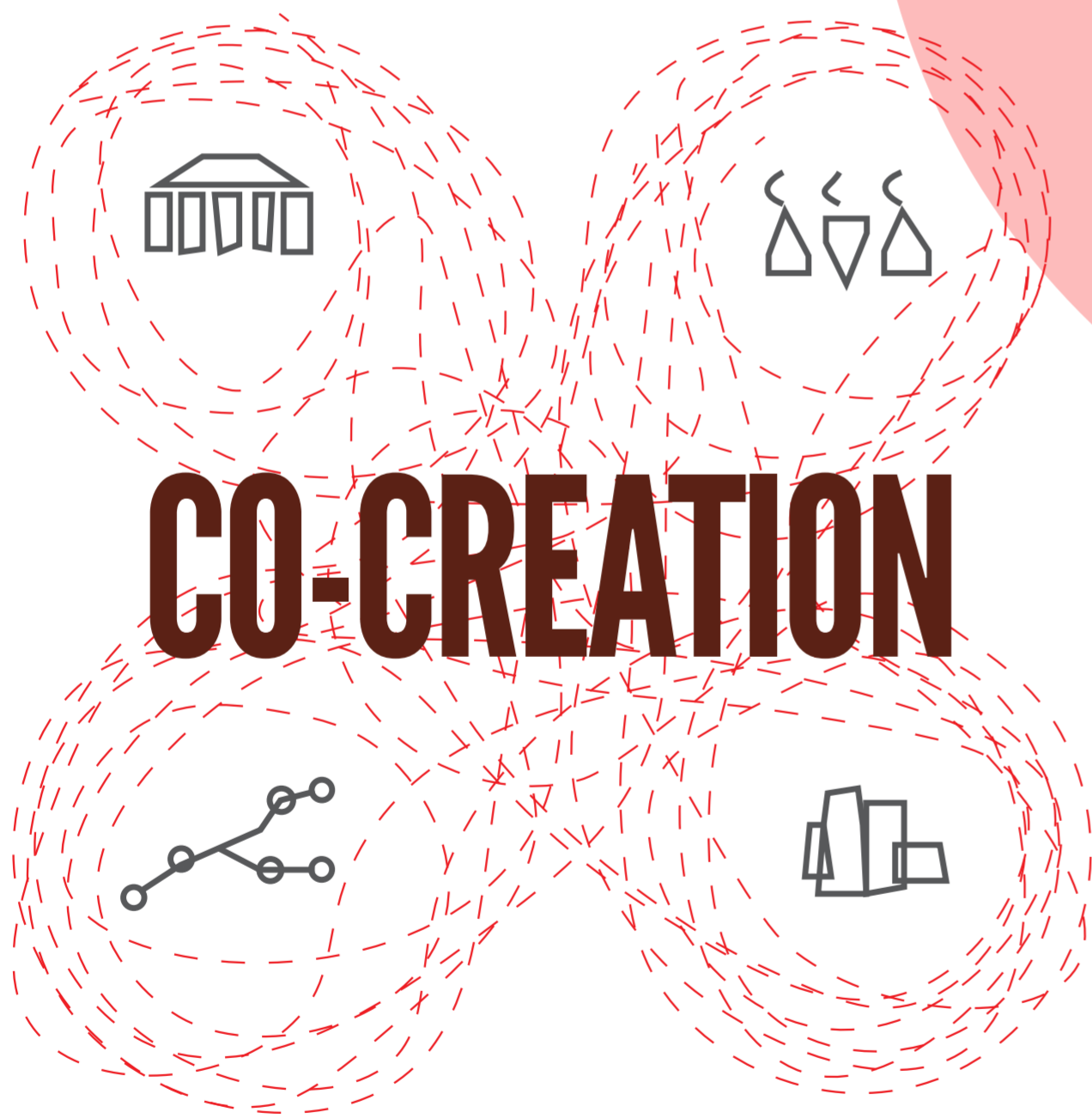
Breakout Space



Collaboration Space



- NO END DATE**
 - WORK ACROSS DISCIPLINES**
 - EMPOWER KNOWLEDGE EXCHANGE**
 - INCLUSIVE & ADAPTABLE**
 - REAL CONDITIONS & ENVIRONMENTS**
- Lifecycle Approach** - Modelled as an open innovation ecosystem that will create sustained growth. It is an evolutionary system, lasting beyond one generation.
- Initial funding provided by BCP and NHS Dorset, combined with external partnerships. Forming partnerships reflects the ethos of the Lab to bring together stakeholders with common goals. Initial funding could also be sought from UK Research and Innovation.
- Transforming into a self sustaining program. Income to sustain the initiative would be generated through data exchange (research output); clinical studies and trials (to collect data); by attracting inward investment and working alongside collaborative partners to sustain growth. In turn the project will generate wealth and employment in the local area.
- Co-Creation** - A non-linear process that involves multiple participants and stakeholders in the ideation process. Need for interdependence at both a macro and micro level, to be united both locally and globally.
- After Covid-19 there has been a recognition that forming partnerships is fundamental to recovery, joining talent spread across multiple organisations and groups. This expands the capability, productivity and quality of results.
- Dorset's Integrated Care System is among the most advanced in the UK. Dorset's population will mirror the global demographic of 2050, 20 years early, making it a unique research opportunity.



Quadruple Helix Model of Interaction

Context.

Attitudes towards health and well-being are shifting. The World Health Organisation defines health as "a state of complete physical, mental and social well-being and not merely the absence of disease or infirmity." (WHO, 2022). This perspective is being pushed to the forefront of agendas, accelerated by the Covid-19 pandemic, opening a new dialogue as to what the future landscape of healthcare will look like. One answer could be Living Labs.

There is a lack of dialogue between society and researchers, leading to a disparate knowledge gap, contributing to healthcare inequality. Addressing the social determinants of health is now being recognised as key to improving health services; with governments and the UN increasingly prioritising public involvement in projects.

Living Labs use real life contexts and environments, directly engaging users through participation. Living Labs form an interconnected network of partners; involving government, academic research, businesses, and society. Together these partnerships produce knowledge through co-creation. It is essential the public understands why their participation is valuable.

Conversations with senior NHS team members aided in defining the problem and understanding from their perspective the aim, envisaged challenges and desired resolution.

* AUB - Arts University Bournemouth, BU - Bournemouth University, BCP - Bournemouth, Poole and Christchurch Council, UHD NHS - University Hospital Dorset NHS

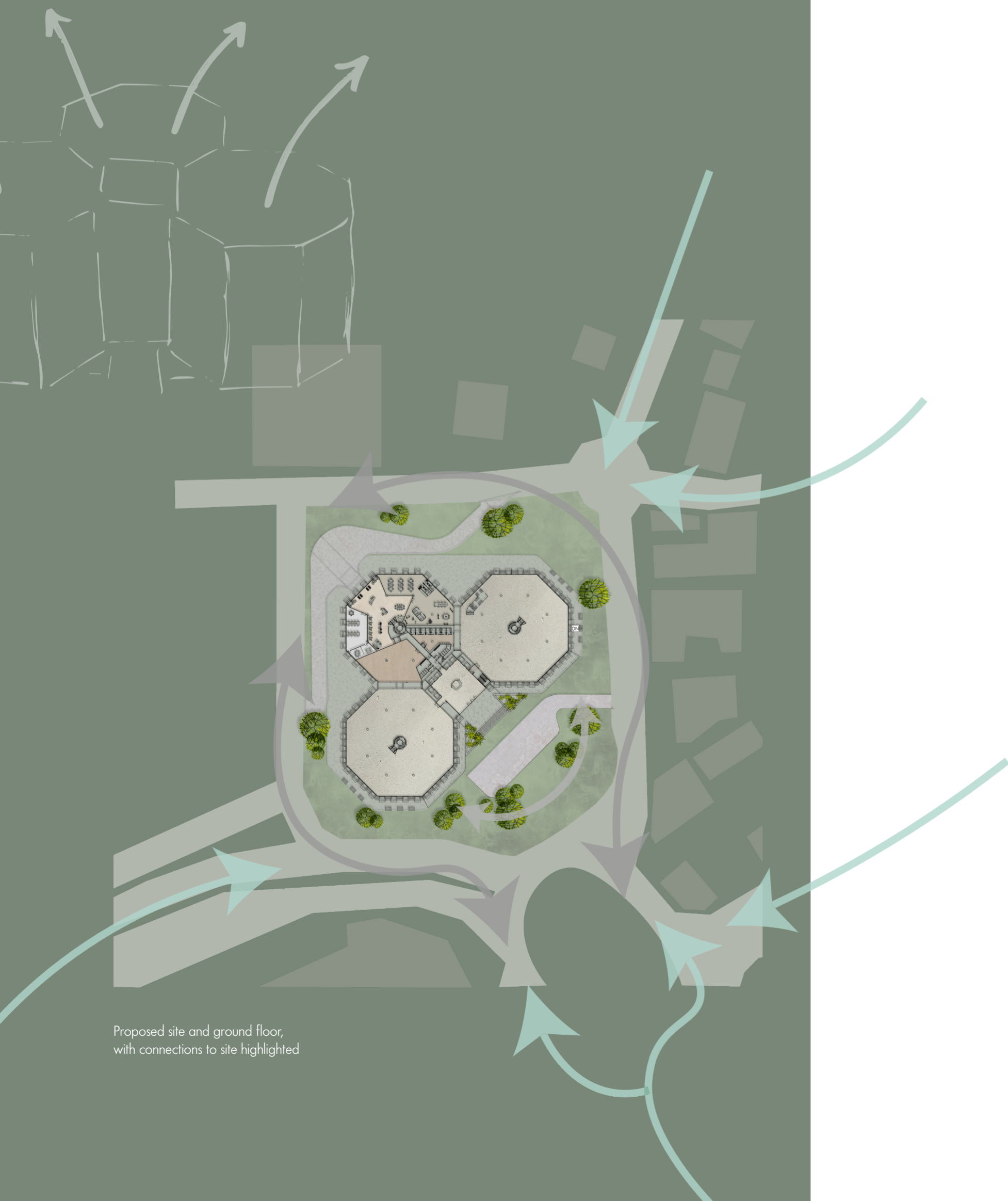
The Living Lab requires a defined identity and connection to the public, the building choice supports this. The adaptive reuse outlines a new purpose for the recently redundant, distinctive local landmark.

Becoming a decentralised urban node the program of the building fosters a hub of activity; accommodating various cross pollinating user types. The site is adjacent to the main town centre, and a key navigation node due to its strong prominence in the landscape.

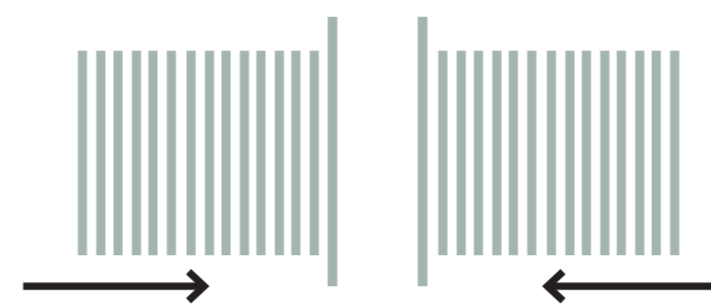
The adaptive reuse of an existing building reflects the development of a sustainable program.



Ariel view of site

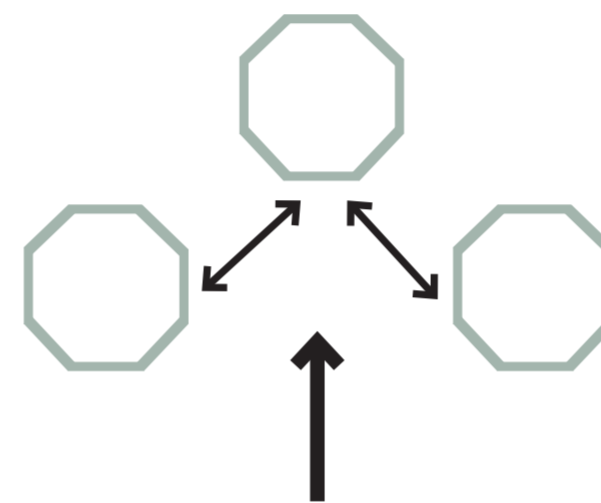


Proposed site and ground floor, with connections to site highlighted



OPEN

Open concourse on ground level breaks down the threshold to the building.



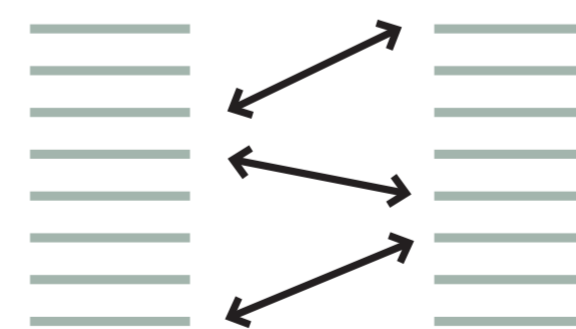
CONNECTED

Cross disciplinary collaboration centres on connectivity. The form of the building becomes a facilitator of this.



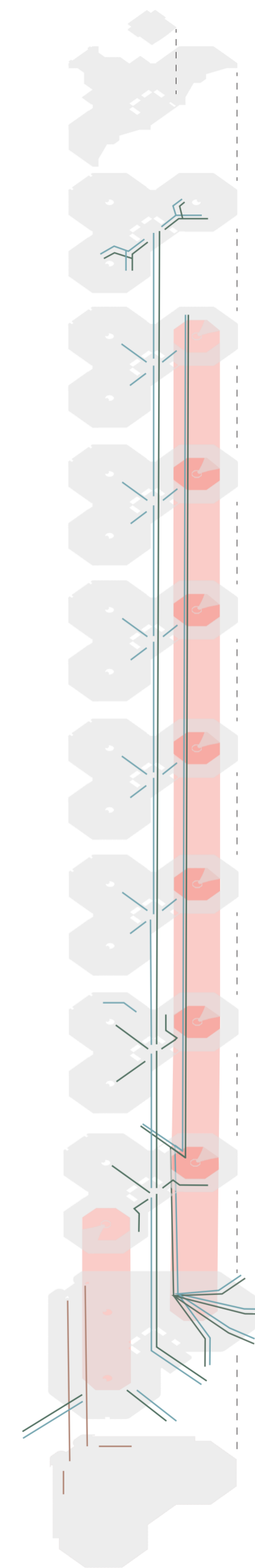
NON HIERARCHICAL

Emphasis on no hierarchy to build collaborative relationships. Utilising the equal proportions of the existing building.



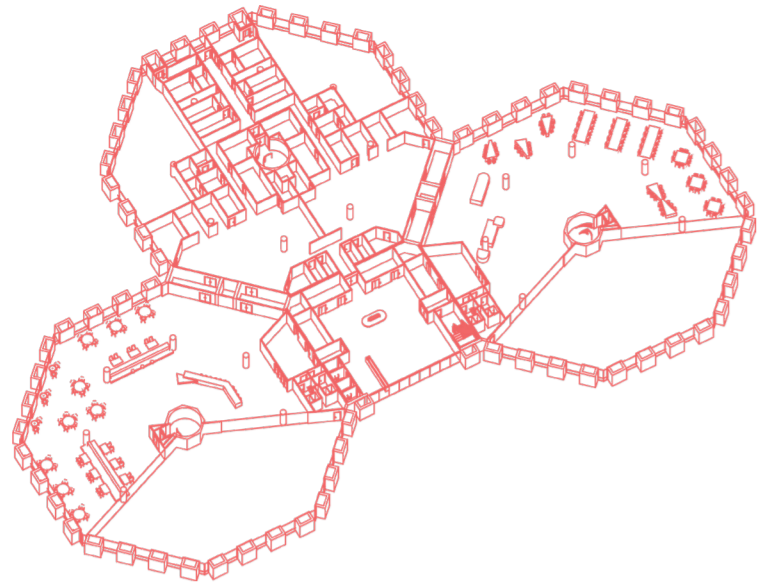
INTEGRATED

Connectivity between levels and between blocks. Reflecting the emphasis on non linear relationships expressed in the quadruple helix of interaction.

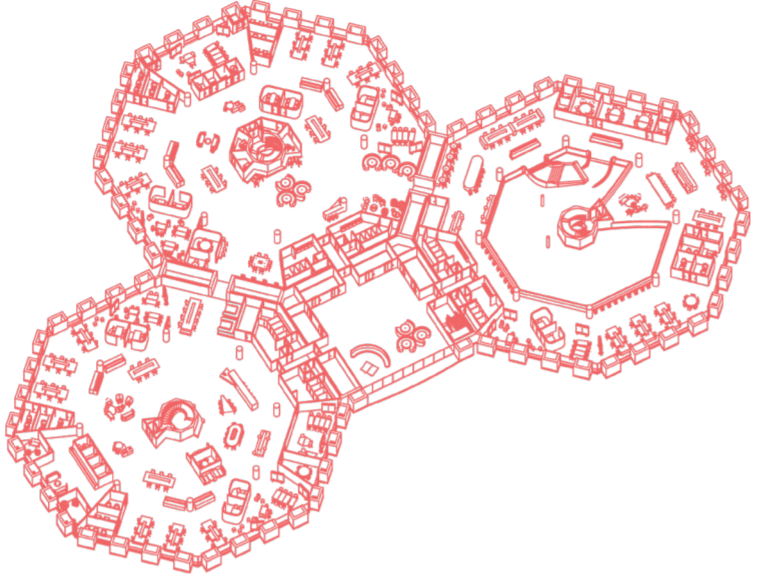


Axonometric view of journey routes

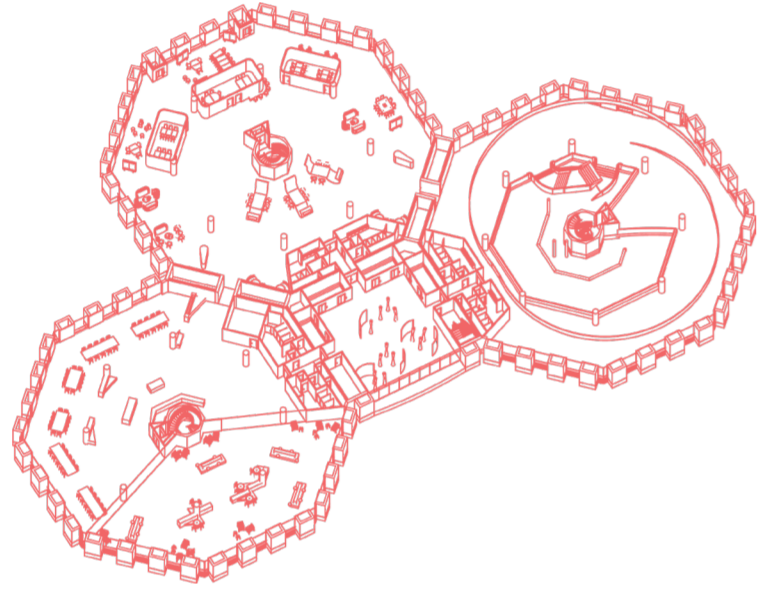
8TH FLOOR



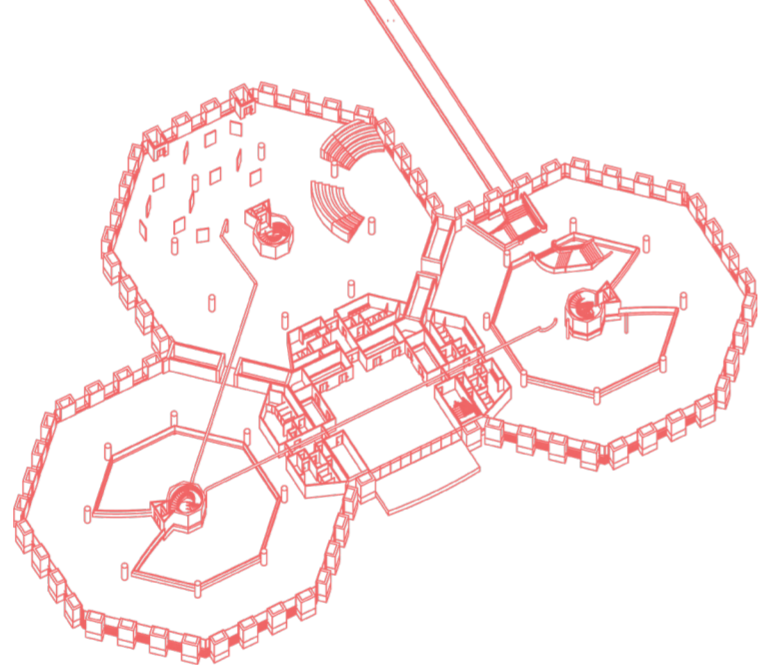
3RD - 7TH FLOOR



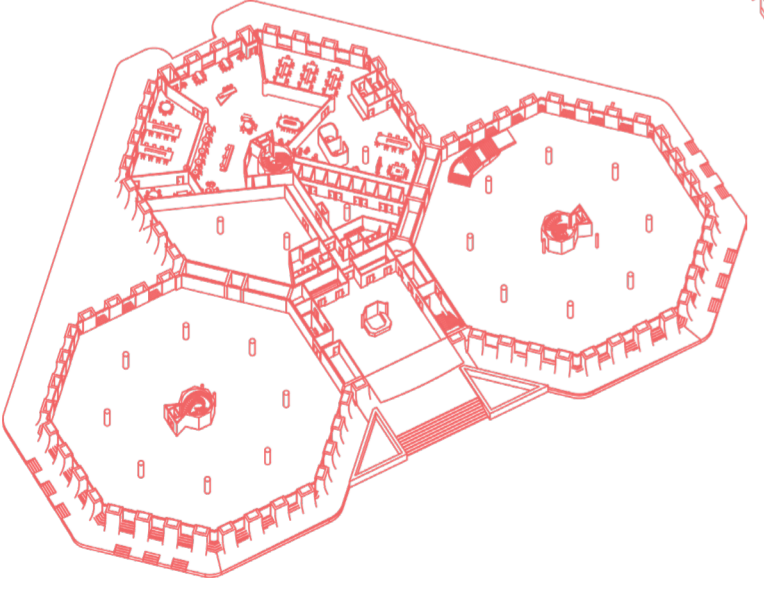
2ND FLOOR



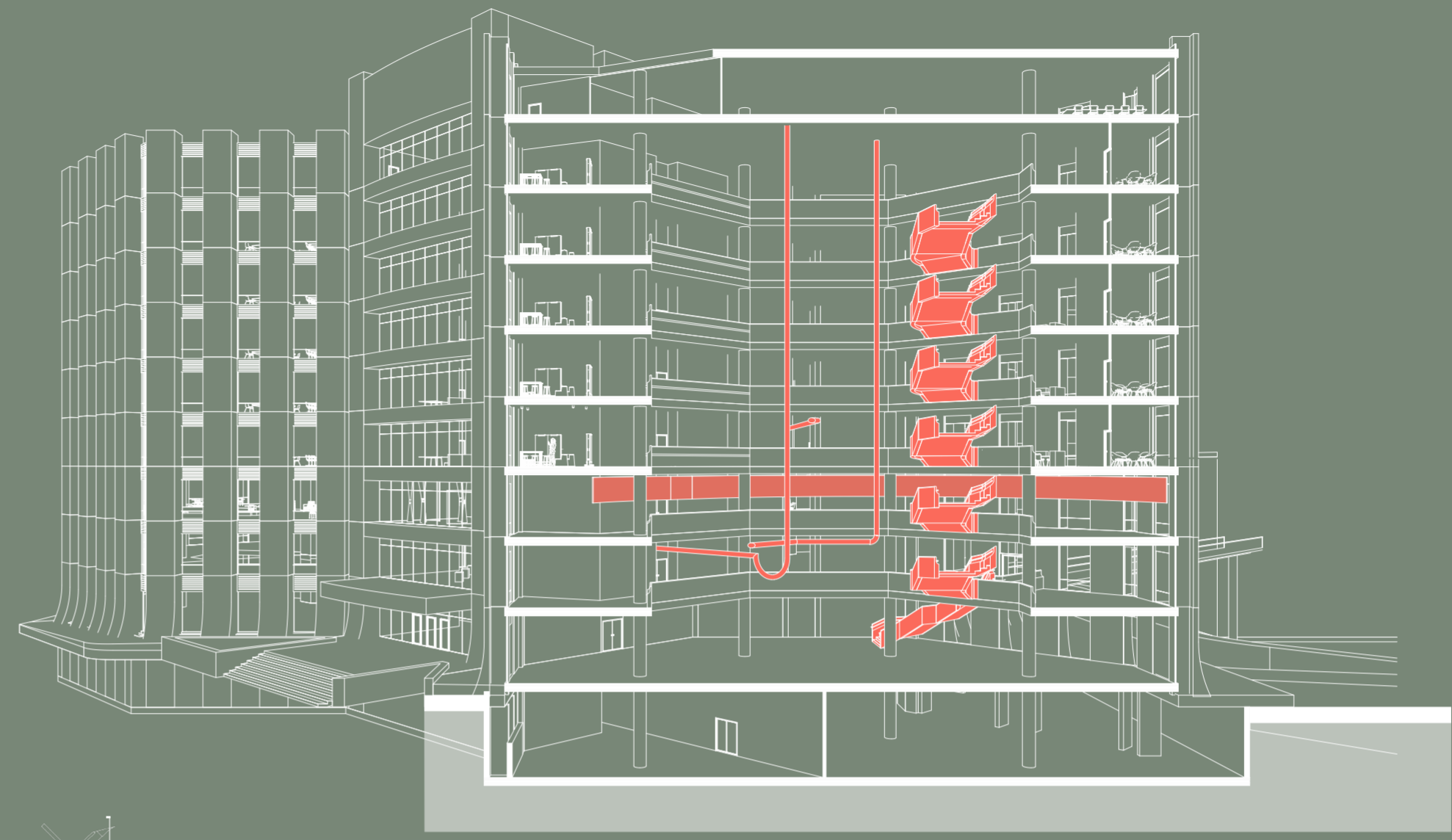
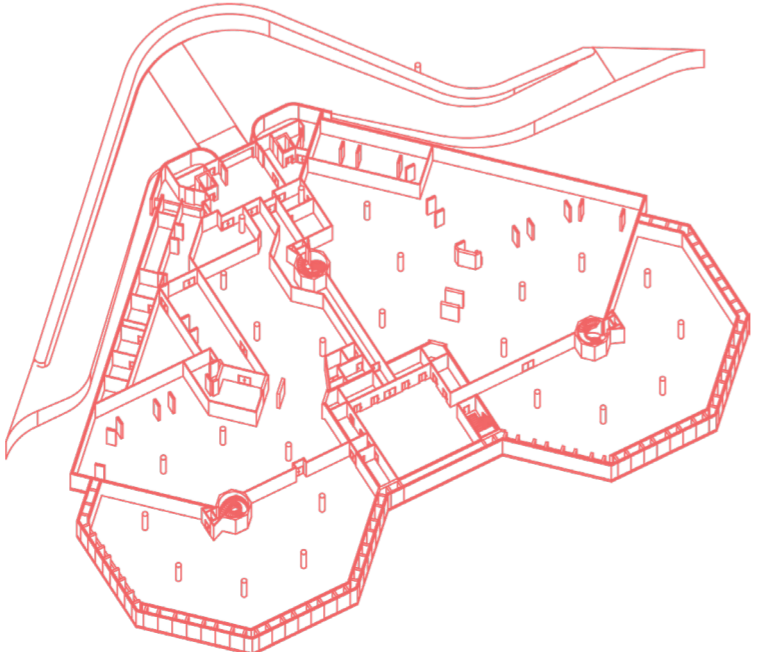
1ST FLOOR



GROUND FLOOR



BASEMENT



Section revealing atrium

The atrium creates a keen sense of place, as the central core of connection, unifying the varied elements of the buildings program.

The building's unique form lends itself to interaction and connectivity, becoming a three dimensional interpretation of the quadruple helix model.

Reaching numerous communities through positive engagement.

Concrete speaks to an honesty, reflecting the program of the building and the schemes intent, while mirroring the existing material language.

