

My project is tailored towards Craft & Making, showcasing examples of admirable care and skill across various mediums. Through the expressive avenues of drawing, digital modelling, physical artefacts, and other means of communication or design development. Each stroke of the pen, each pixel meticulously placed all contribute to a harmonious symphony design. This project celebrates the art of creation, where dedication, precision, and passion intertwine to produce a piece of captivating work.

Taking what is a beautiful, unloved piece of architecture located in Southampton, Fawley. A beautiful tidal Mill built in 1806 which sadly has been disused for the past five years. My vision is a day retreat offering workshops and workspaces inspired by the building's history. Offering a space, vision, and experience for all ages. The tidal mill, re-imagined with a new water turbine, which takes a step forward to becoming net carbon zero.



COME VISIT
THE MILL HOUSE
ASHLETT, FAWLEY

SITE ACCESS



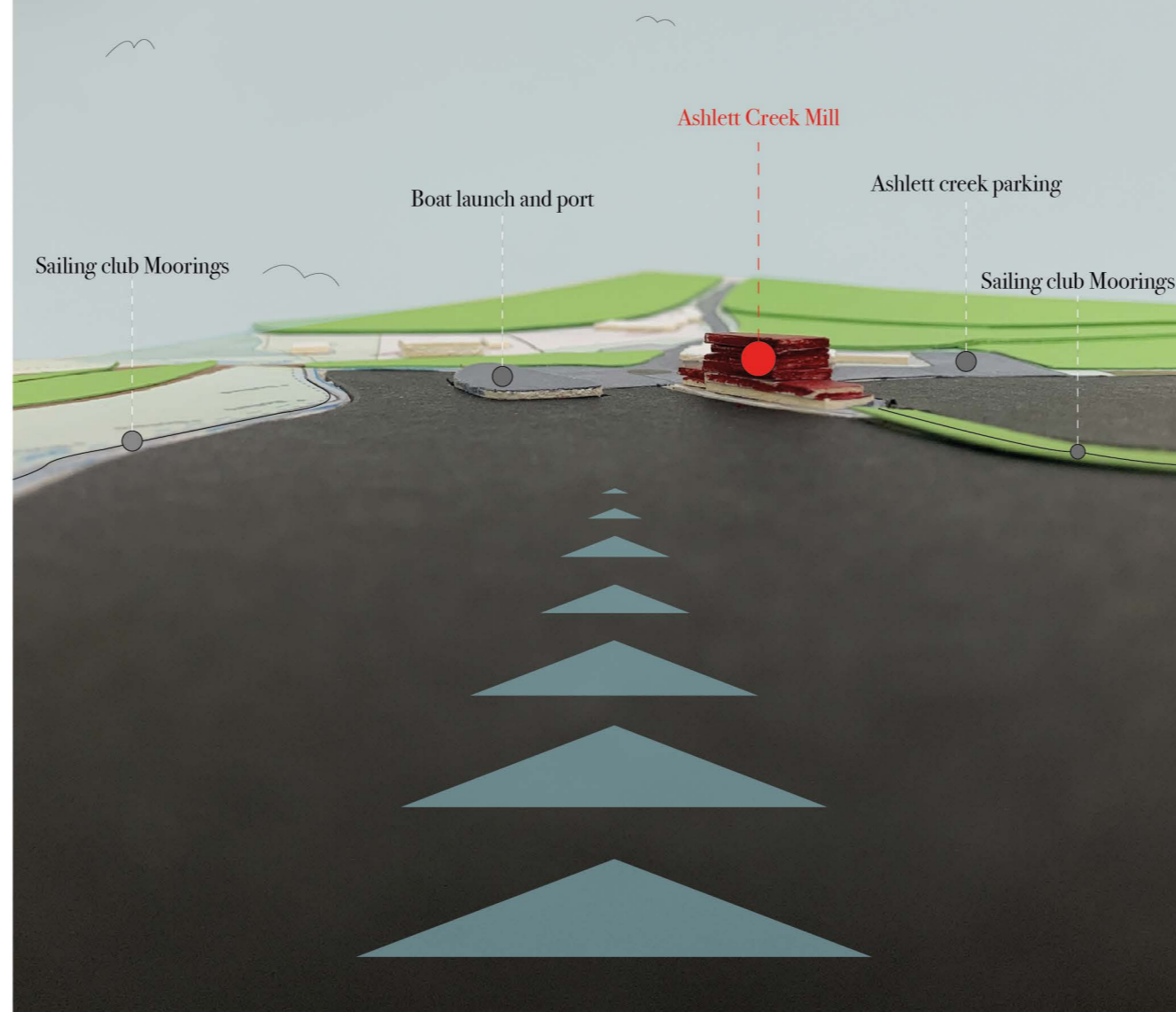
SUN PATH



WIND DIRECTIONS



INVESTIGATING SITE TYPOGRAPHY WITH A HAND-MADE MODEL ILLUSTRATED DIGITALLY



SITE INVESTIGATION



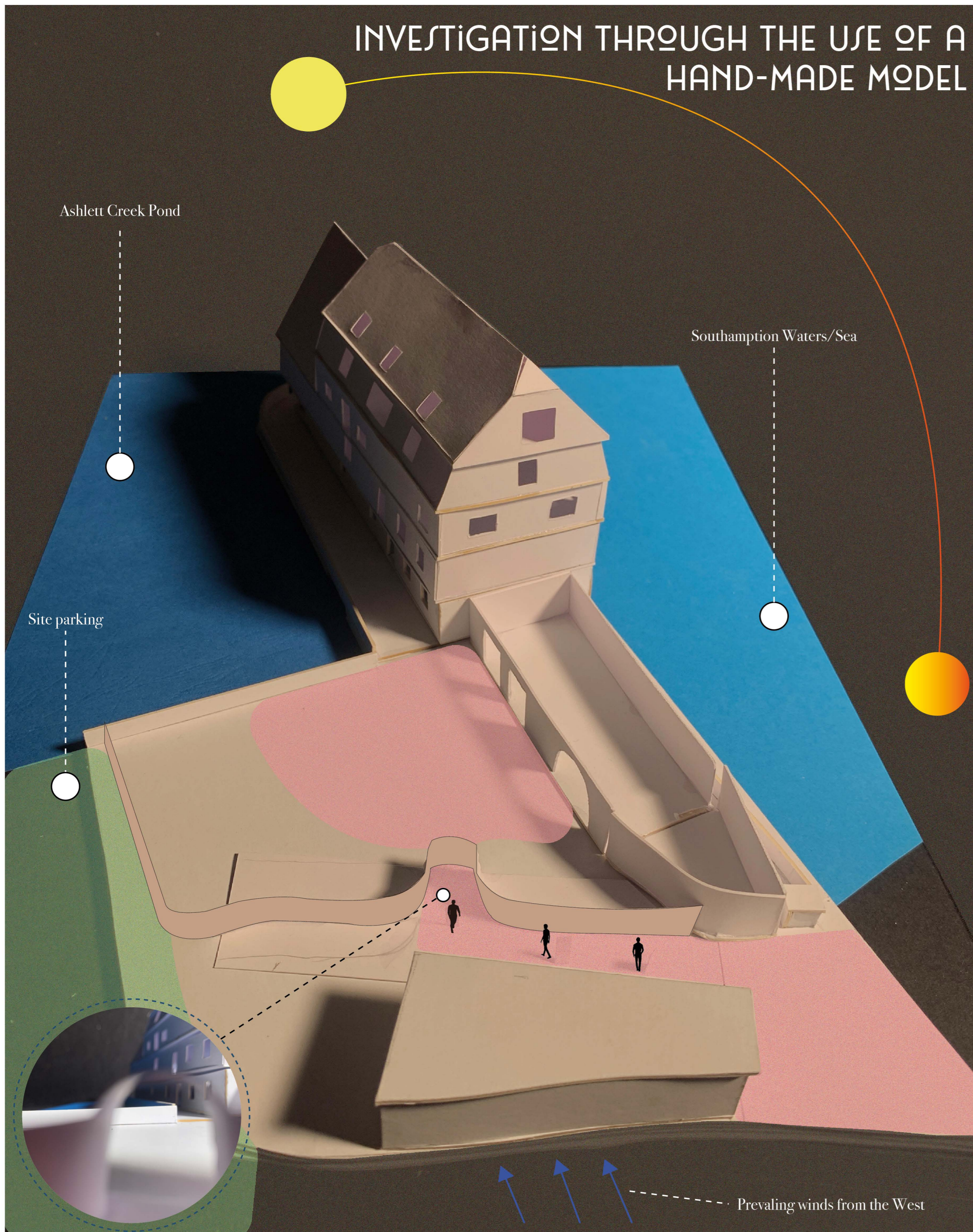
ASHLETT CREEK MILL SITE MAP

SITE PARKING

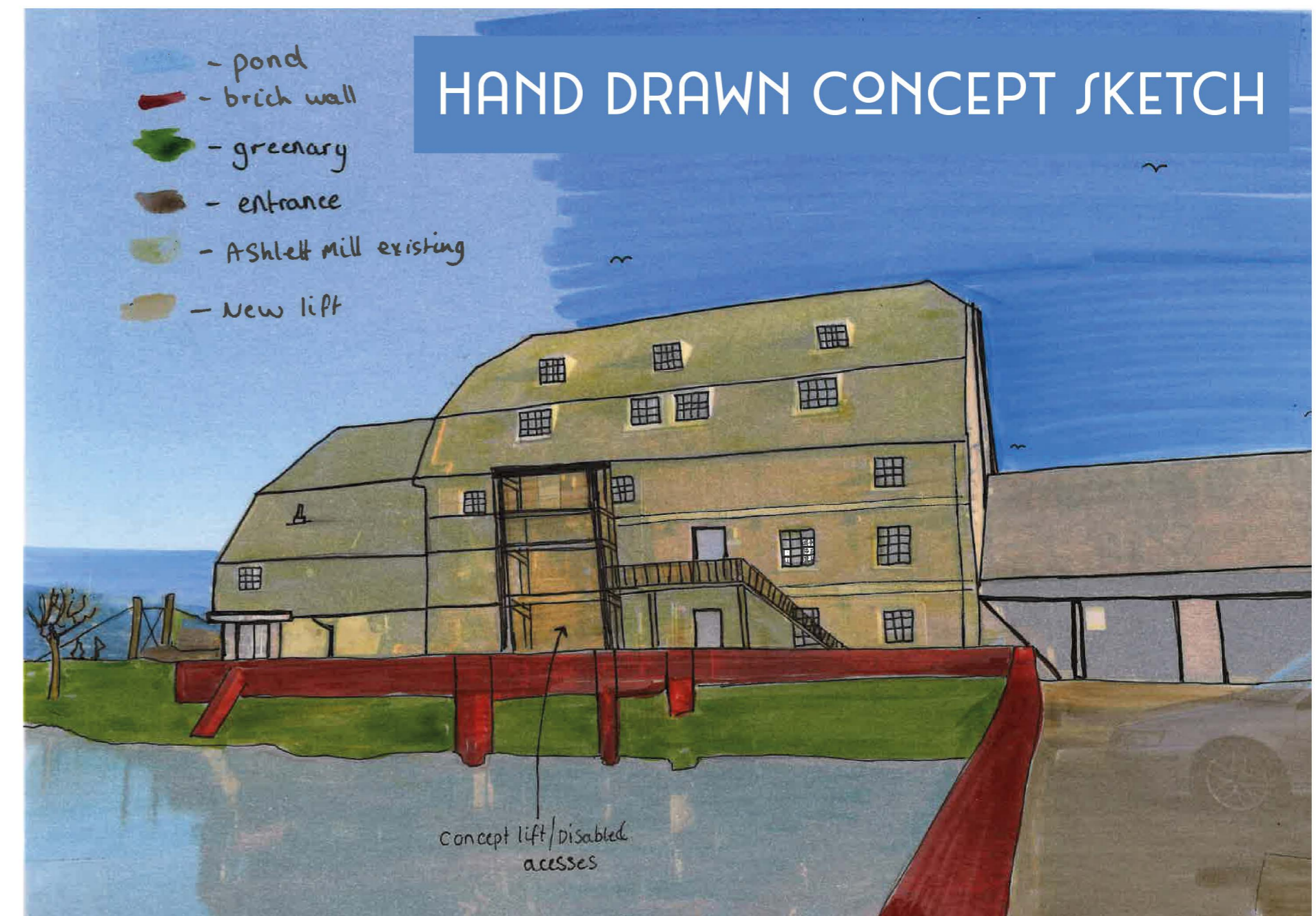
SITE ENTRANCE →

A1 @ :1250

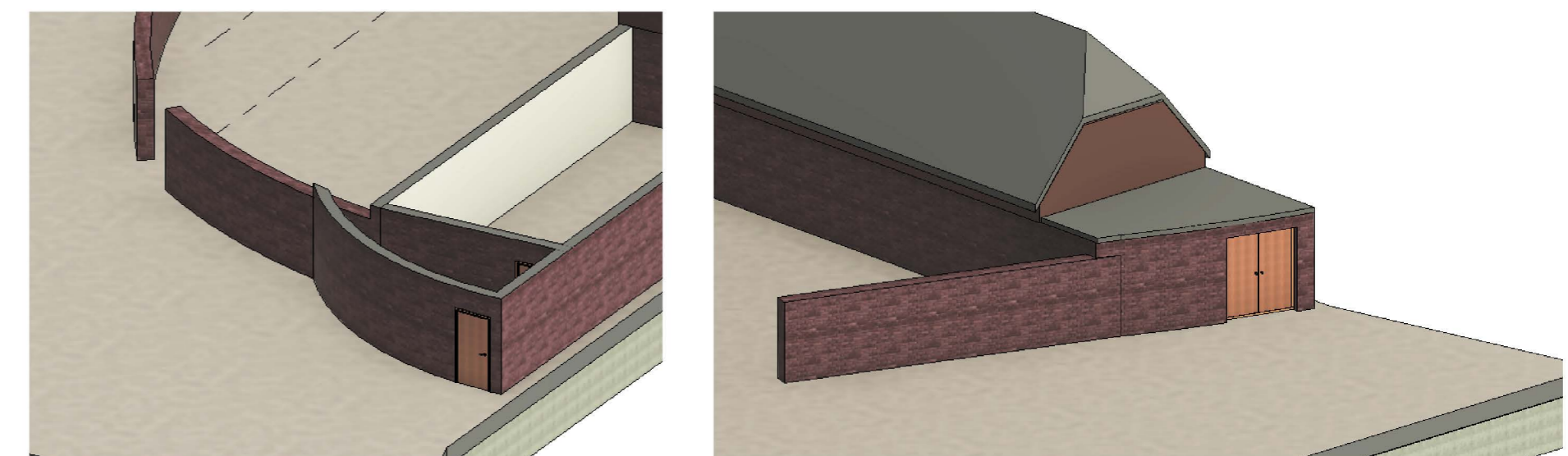
INVESTIGATION THROUGH THE USE OF A HAND-MADE MODEL



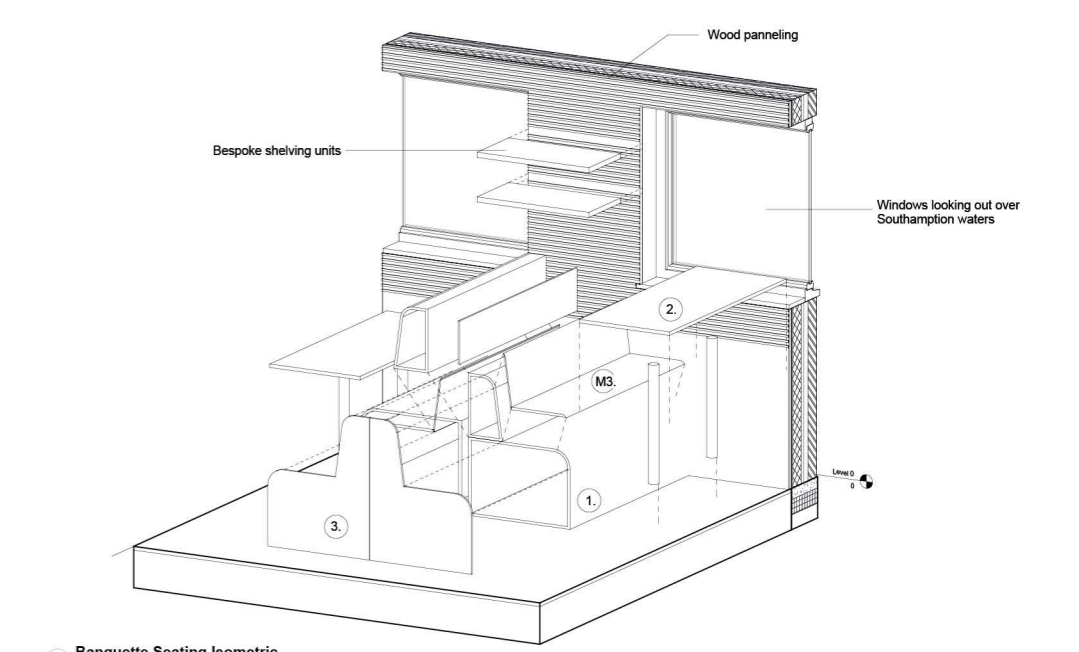
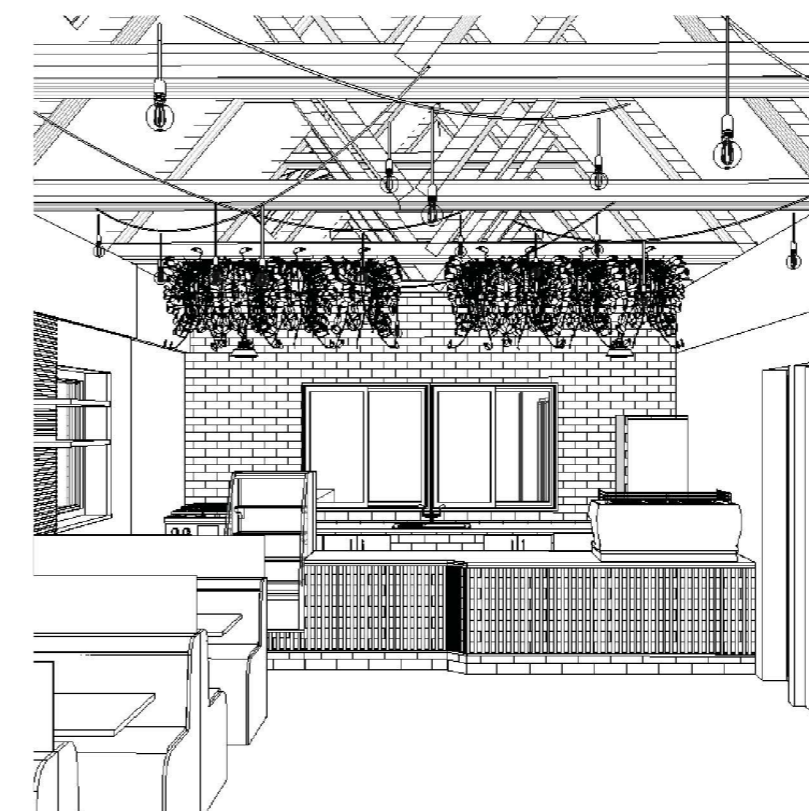
HAND DRAWN CONCEPT SKETCH



DESIGN DEVELOPMENT IN REVIT



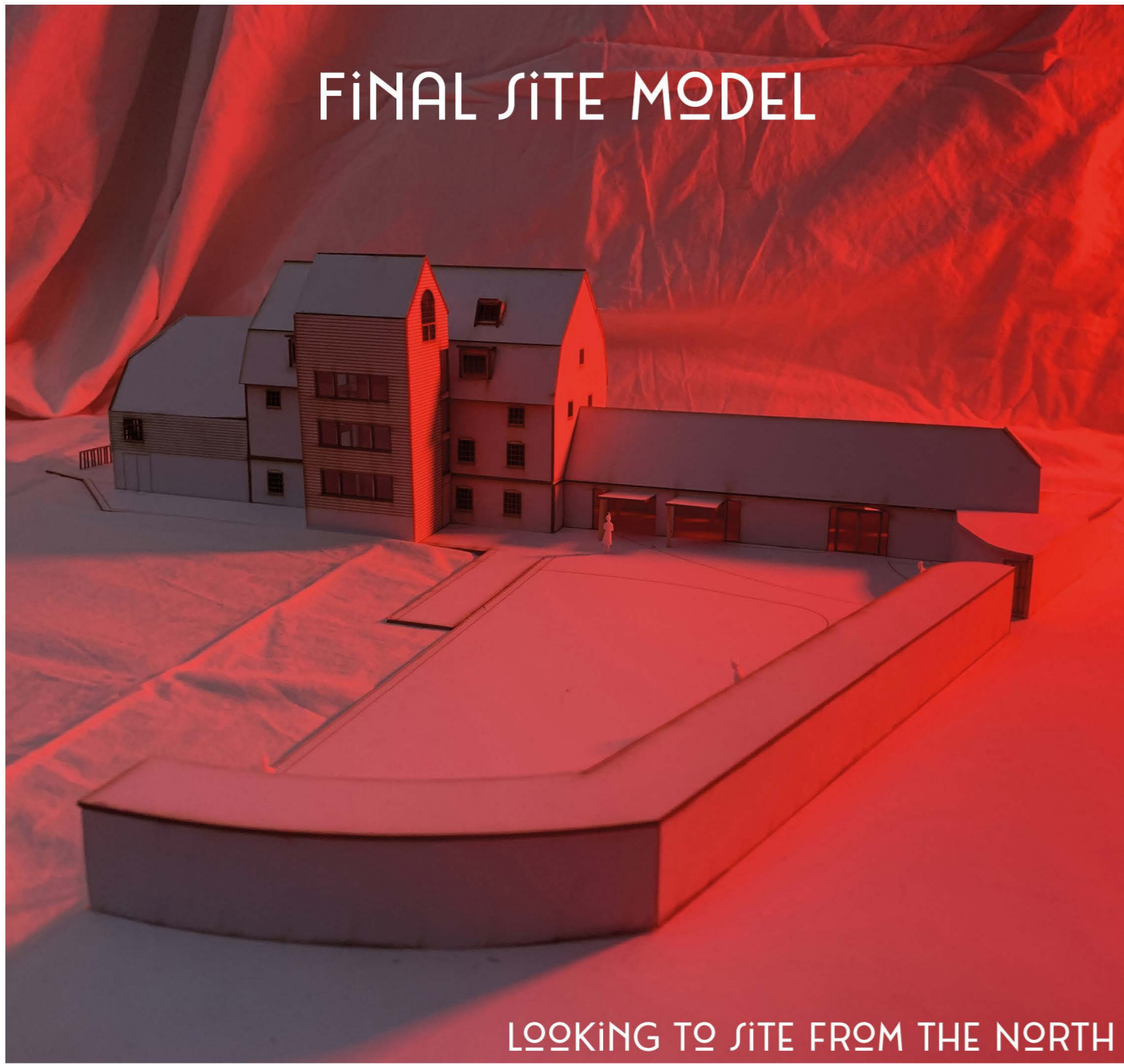
DESIGN DETAILING



1. Banquette Seating Isometric
- Detailed Area Key: Links with FF&E Schedule
- 1. Banquette seating base
 - 2. Table
 - 3. Seat end board
 - M3. Banquette fabric seating

CARE WAS TAKING DOWN TO THE SMALL DETAILS WITH THIS BESPOKE BANQUETTE SEATING

FINAL SITE MODEL



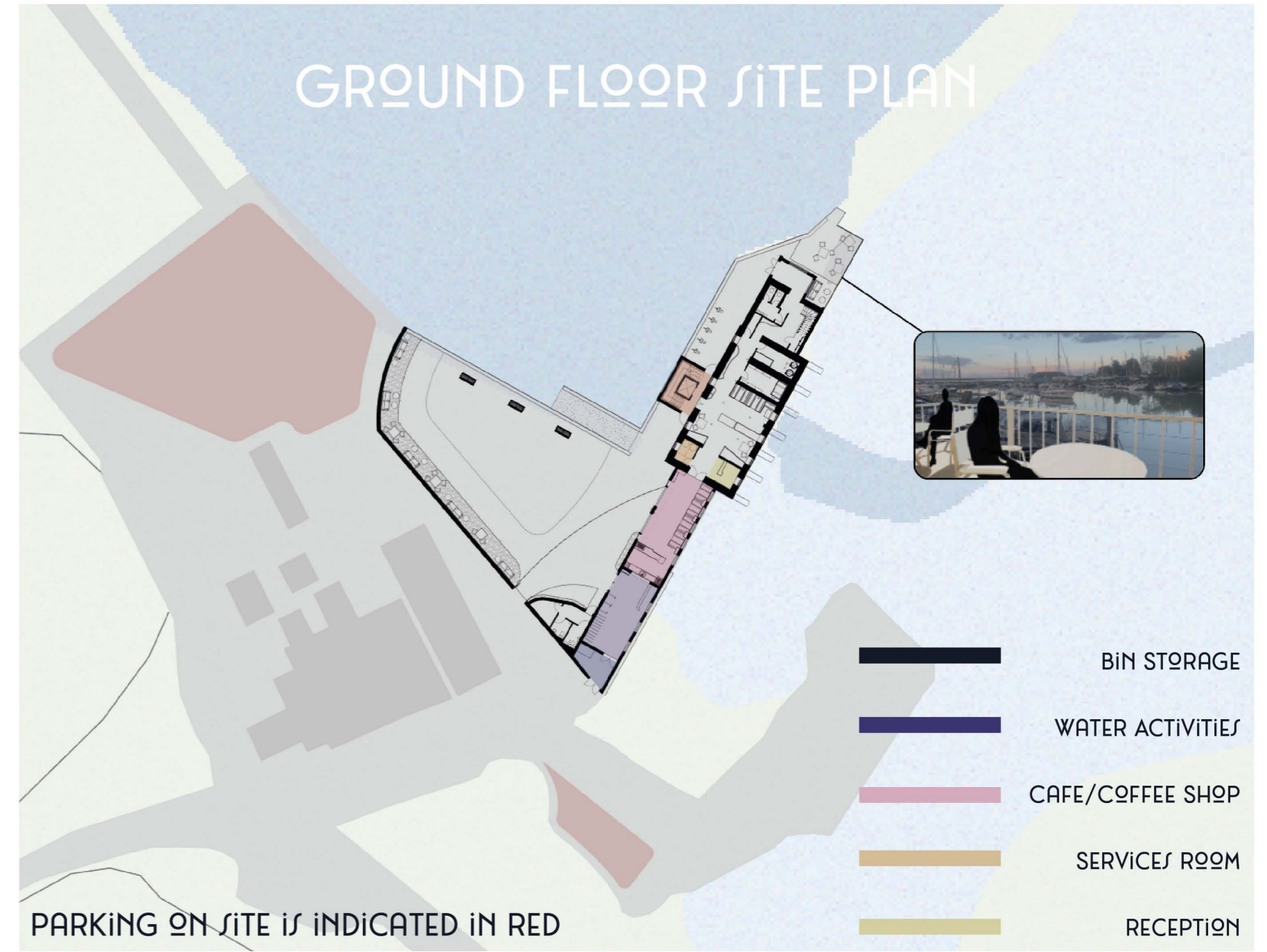
LOOKING TO SITE FROM THE NORTH

FINAL SITE MODEL



VERANDA FROM THE NORTH EAST

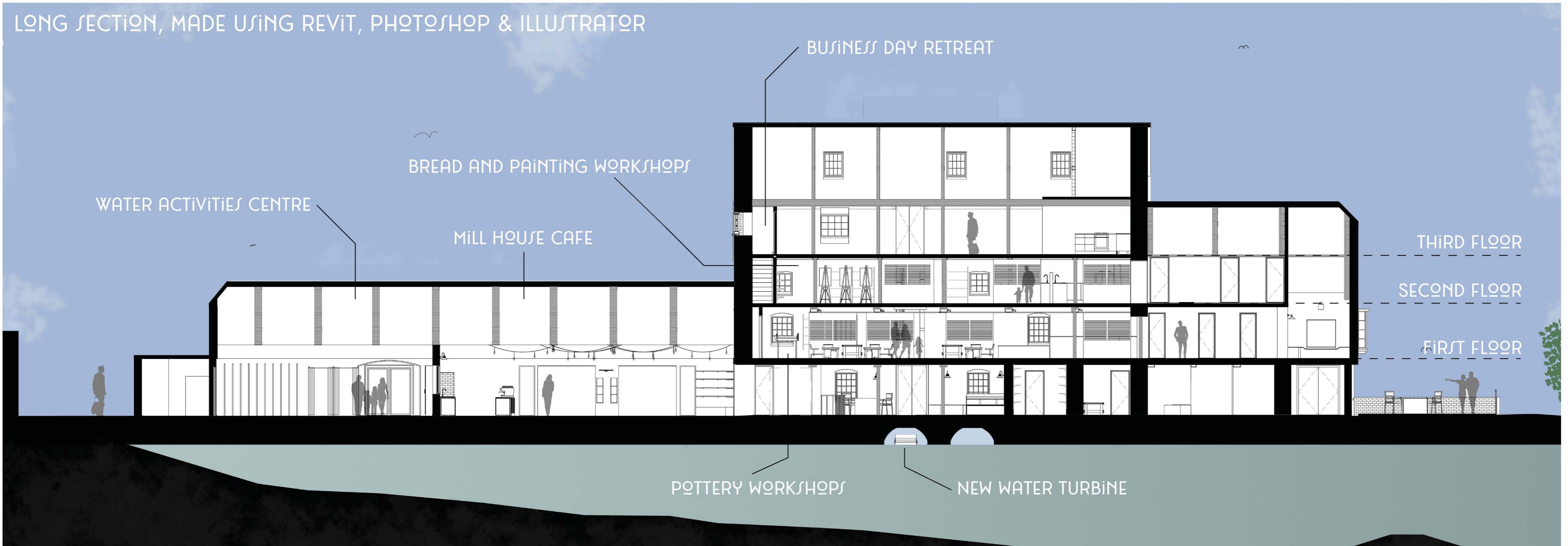
GROUND FLOOR SITE PLAN



PARKING ON SITE IS INDICATED IN RED

- BIN STORAGE
- WATER ACTIVITIES
- CAFE/COFFEE SHOP
- SERVICES ROOM
- RECEPTION

LONG SECTION, MADE USING REVIT, PHOTOSHOP & ILLUSTRATOR



BUSINESS DAY RETREAT

BREAD AND PAINTING WORKSHOPS

WATER ACTIVITIES CENTRE

MILL HOUSE CAFE

THIRD FLOOR

SECOND FLOOR

FIRST FLOOR

POTTERY WORKSHOPS

NEW WATER TURBINE

ENTRANCE TO SITE



THIRD FLOOR BUSINESS DAY RETREAT



The Mill House offers a number of spaces and facilities which are all driven by the history of Ashlett Creek Mill and the aim of bring people together.

The pottery workshops have been chosen by the seaplanes due to the allure of the soft clay that envelops the site, providing the perfect natural resource for moulding and shaping exquisite ceramic creations.

The bread making workshops find their roots in the building's historical significance as a salt port. Transforming the space into a hub of deliciously aromatic dough and delectable loaves that pay homage to its flavourful past.

The landscape painting workshops draw inspiration from the building's site and the mesmerizing natural beauty that surrounds it, providing an idyllic vantage point to sit, immerse oneself in the serene atmosphere, and effortlessly capture the enchanting scenes onto canvas with each brush-stroke.

The business day retreat at The Mill House aims to foster collaboration and connection among colleagues by providing a diverse range of activities and top-notch facilities, creating an environment where individuals can come together, exchange ideas, and rejuvenate their professional spirits. Whether it's team-building exercises, brainstorming sessions in an inspiring conference room, or unwinding in the tranquil outdoor spaces, this space offers a comprehensive experience that encourages teamwork, innovation, and a sense of unity among the participants.

The introduction of the water sports activity centre was a direct response to the site's ideal location, boasting both a serene creek and the encompassing waters of Southampton, providing the perfect backdrop for a diverse range of thrilling water-based activities.

The Mill House Cafe goes beyond offering bread made in the workshops and showcases a delightful array of products from the building, creating a vibrant experience. Moreover, it provides a welcoming space for everyone, with the option of indoor and outdoor seating, allowing users to sit in comfortable and an inviting environment

GROUND FLOOR CAFE AREA



THIRD FLOOR POTTERY WORKSHOP

