

### Why should our deathscapes be redesigned?

Our traditional methods of burial produce substantial **carbon emissions** and take up necessary **land space**. Additionally, our typical bleak and impersonal memorial spaces don't reflect our current values. Therefore there are many sustainable designs being explored which can be incorporated into the future deathscape. **Water cremation** creates the least carbon emissions out of all sustainable burial methods.

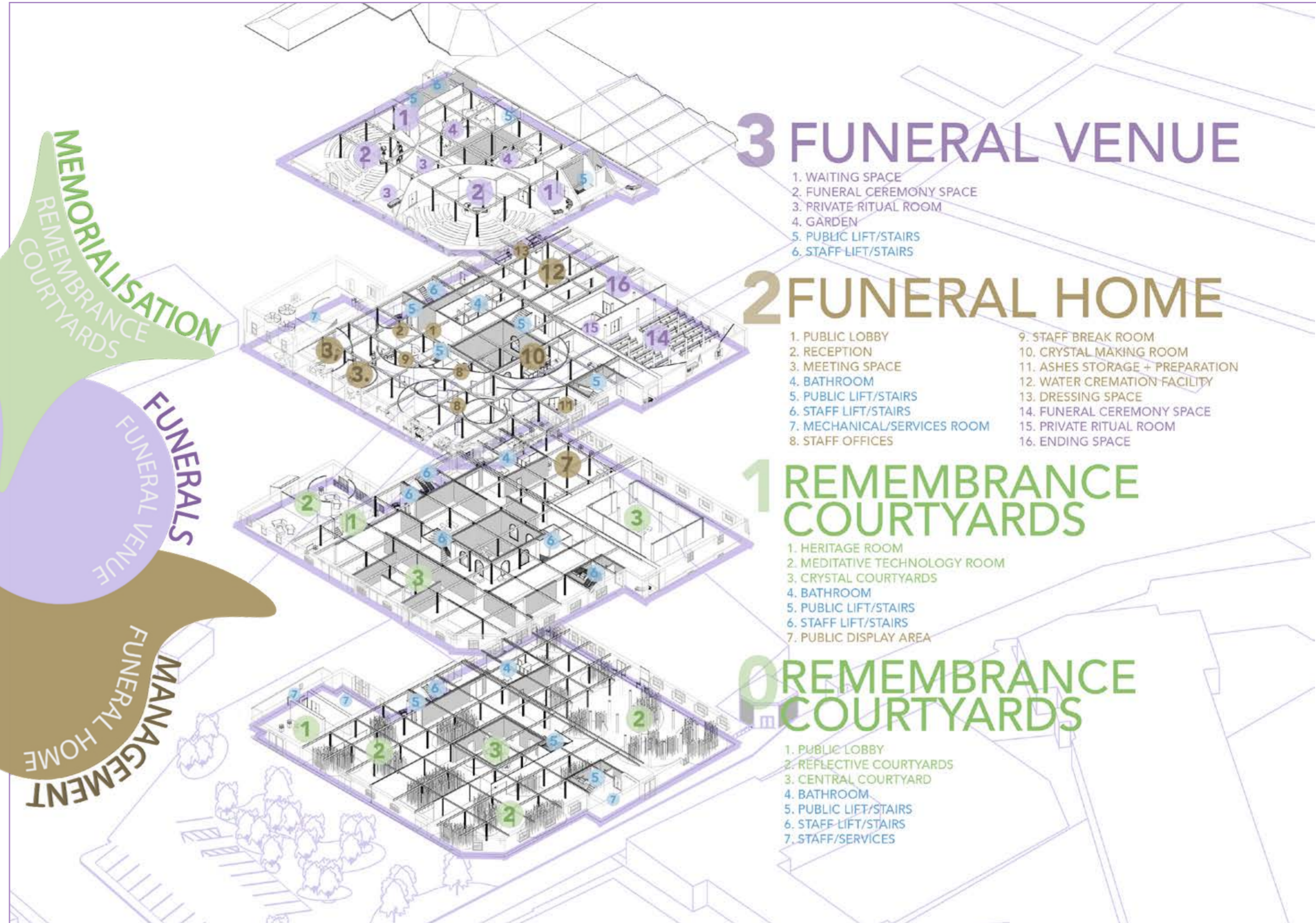
### Statement of Intent

REVE proposes an alternative sustainable crematorium in Southampton which uses water cremation. Visitors can pay respects towards the deceased and learn more about their heritage through new technologies. Within the building walls of REVE, the deceased live on as sparkling crystals made from their ashes. This project has spaces to support funerals, after-death disposition and memorialisation.

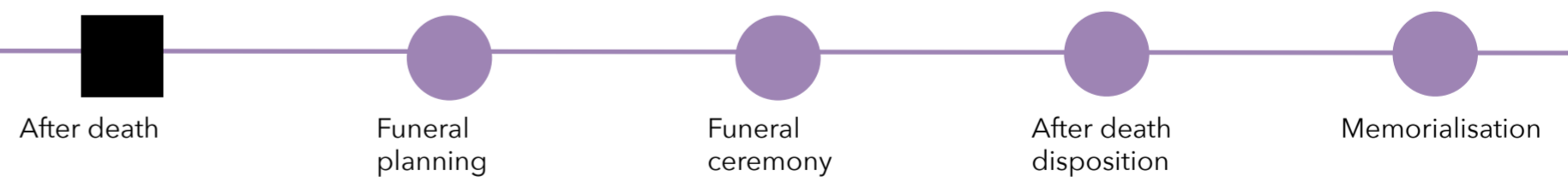
*Rêve* in French means dream. This project aims to create a sense of **wonder** and **hope** towards the future, allowing visitors to have meaningful **revelations** from the death of a loved one. It promotes an open dialogue surrounding death, allowing visitors to consider leaving behind a positive legacy when celebrating the lives that have been lived.

### The Crystal Memorials

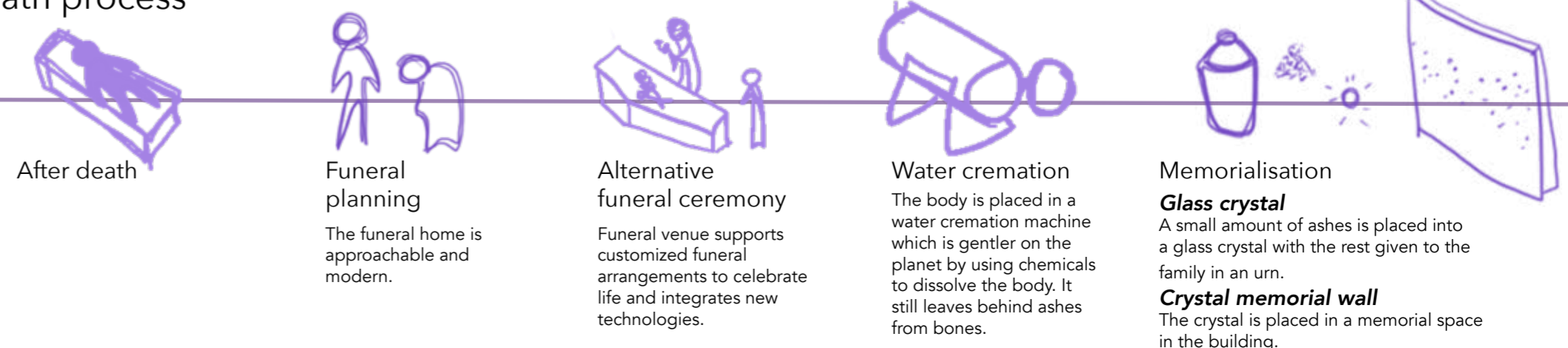
What is unique about this project is that within REVE's building walls the deceased live on as sparkling crystals made from their ashes. After death, the ashes of the deceased can be incorporated into a bespoke glass crystal. This crystal can then be placed on the wall of a memorial space inside the building. This represents the person that has passed which uses less space than a headstone but is also special as it leaves a physical part of the person behind.



### The general death process



### The REVE death process



# User Journey

Lets experience the building through the eyes of Damien, who chose REVE to make funeral arrangements for his mother Cynthia who had recently passed away.



In her old age, my mother's death was imminent, so she already chose to be water cremated with REVE. But despite that, I was still shaken the day she passed. Before I could grieve, I knew I had to plan her funeral the way she wanted it to be. Joyful and kind to the planet.



## Planning the funeral



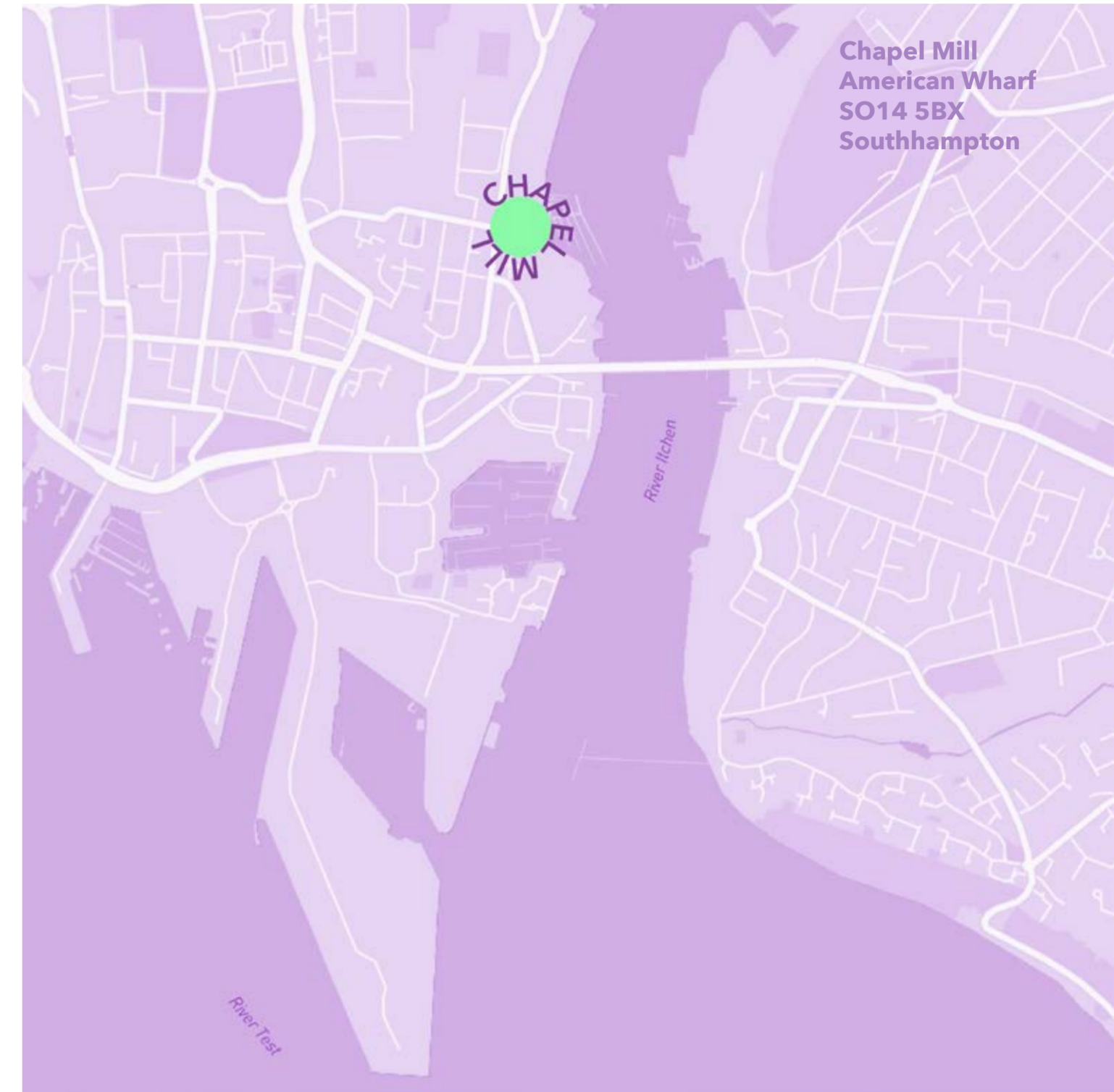
Walking into REVE, I felt like stepping into a warm embrace. Somehow, death didn't seem like the end, and life still continues.



I met up with the funeral director in a homey and modern space. They were understanding and efficient, letting me plan a funeral that would fully reflect my mother's approach to life. Mom had an easygoing personality and an immense appreciation for the ocean.



We spent some time walking through the venues and public display areas to choose the casket, memorial crystal and other elements required for my mom's funeral.



## Attending the funeral



The day of the funeral, everything was fully prepared. We started with a procession from our home to the venue. And guests gathered in the waiting area with refreshments.



As the funeral started, I felt emotional. The venue was designed to emulate the ocean. Looking up at the undulating blue projections on the walls of the venue I felt that mom would be satisfied. We watched videos showing good memories and her important milestones.

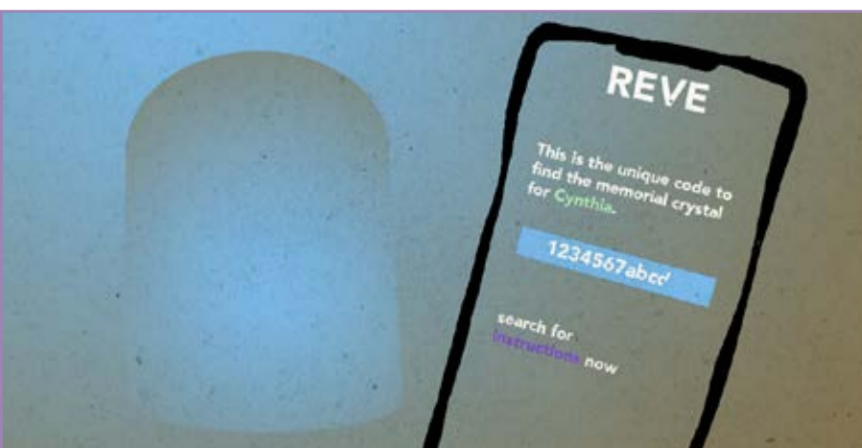
## Memorialising the deceased



Then we followed the casket downstairs to be cremated. As I looked out to sea and watched the charging of the coffin I felt that my duty was finally done. I can now rest, and mourn her in peace.



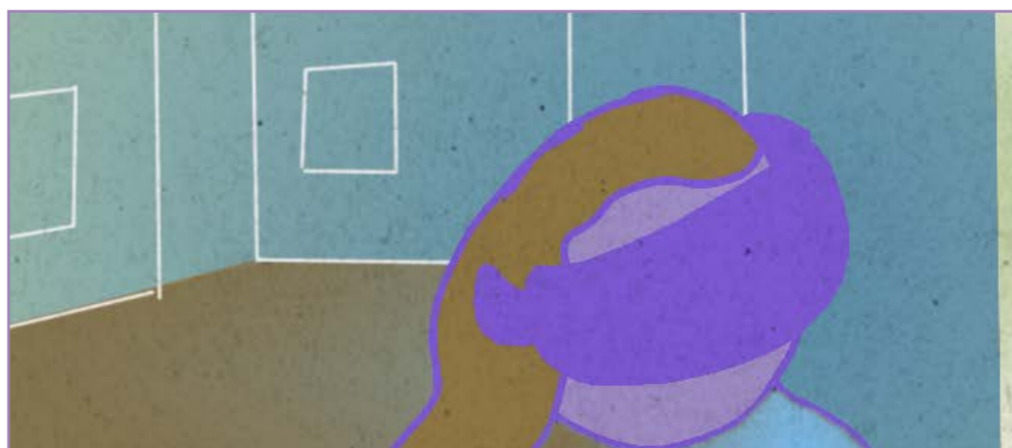
A week later, I came back to REVE to receive her ashes and place her crystal on the wall. Her crystal had waving patterns of blue and white which created a beautiful pattern with the other crystals on the wall.



I received the urn with an email of a digital package of instructions to find her crystal and access her virtual memorial on the REVE site. I sent this to friends and family.



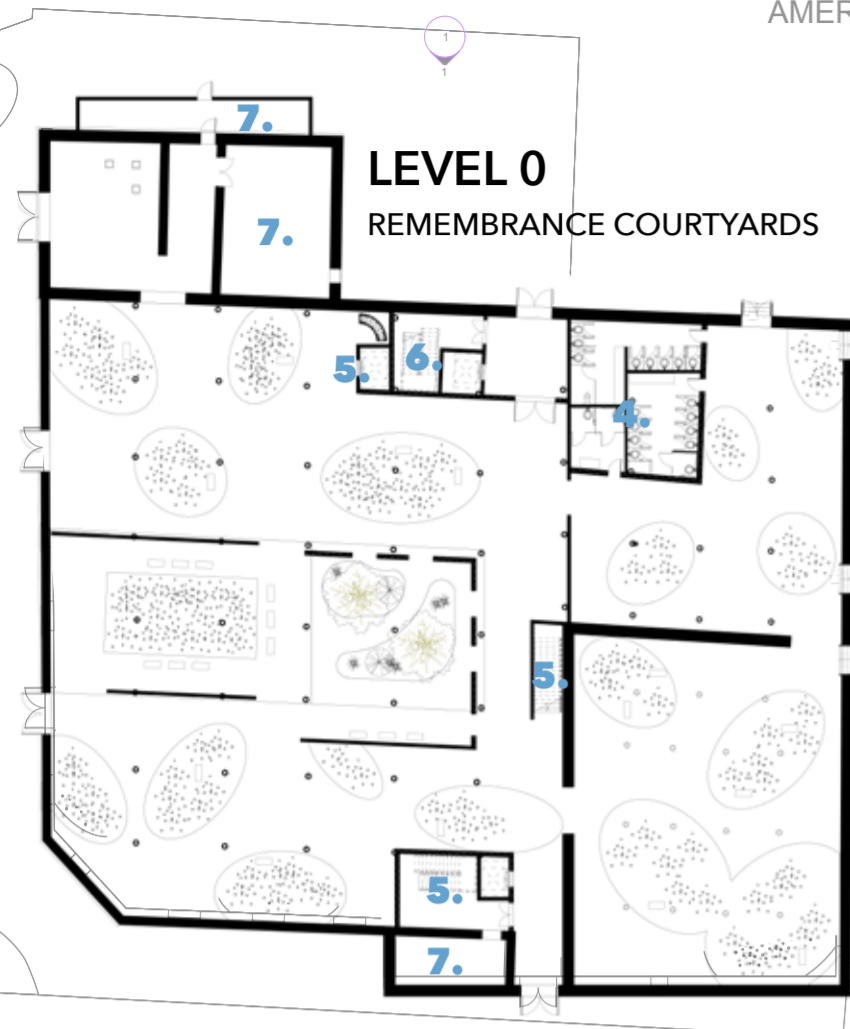
I came back the next month with my youngest cousin Sorel. My spirit lifted slightly seeing her finding joy in exploring the ground floor tree memorials and slowly decorating mother's virtual memorial.



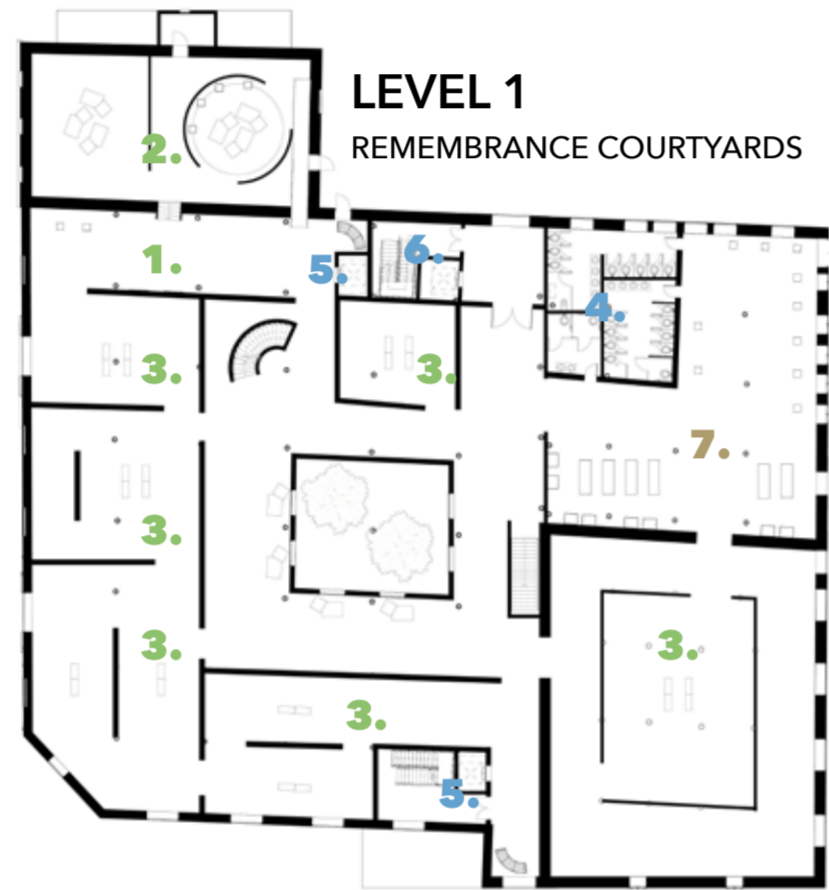
I enjoyed looking at the engravings on other crystals and watching the projections of different people's virtual memorials. You can get a sense of people's values and personalities.



The month after that I would visit whenever I missed my mother. I felt that at REVE I could be closer to her. I find the ambient sounds played in the background calming and enjoy this time to think by myself.



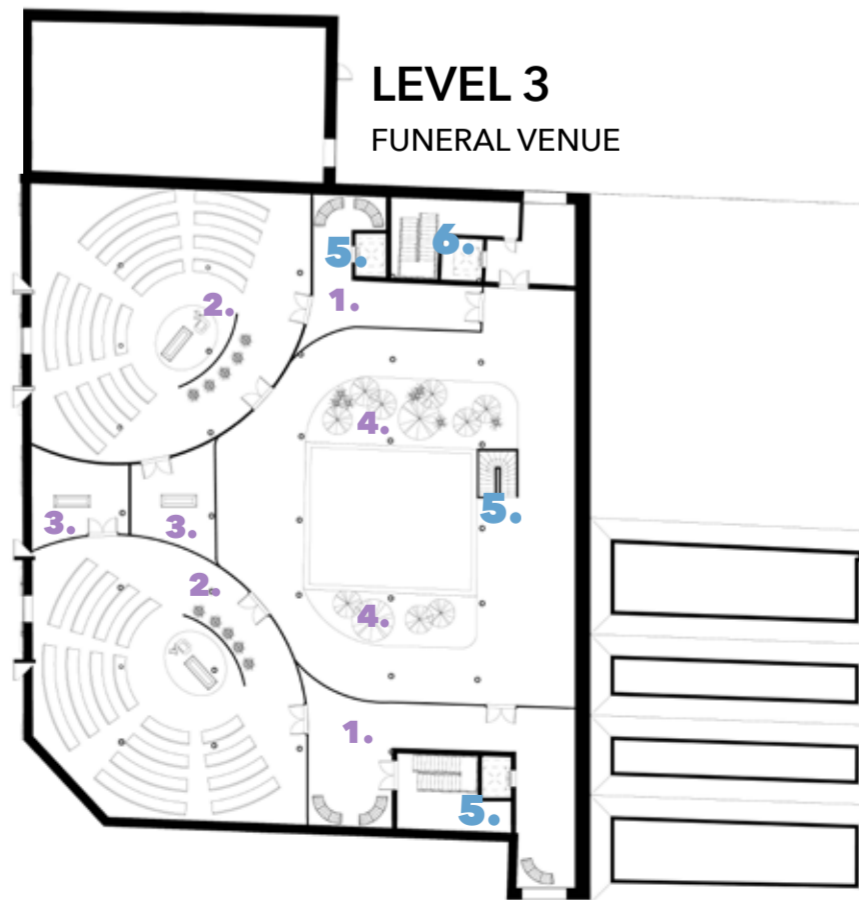
- 1. PUBLIC LOBBY**  
Entering from the main entrance, people can see a directory showing the zones to help navigate the building. There is also a display outlining how this project works and the history of the building.
- 2. REFLECTIVE COURTYARDS**  
These courtyards on the lower levels provide a reflective route emulating a woodland which allows people to think about death and leaving a positive legacy on the Earth. It has seating and calming sounds from nature.
- 3. CENTRAL COURTYARD**  
This courtyard on lv0 is decorated with trees and vegetation where people can sit, reflect and look up to the floors above.
- 4. BATHROOM**
- 5. PUBLIC LIFT/STAIRS**
- 6. STAFF LIFT/STAIRS**
- 7. STAFF/SERVICES**



- 1. HERITAGE ROOM**  
The heritage room consists of a memorial book to remember names of the people that were cremated in the building. There is also screens to help people search up the deceased and find their remembrance crystals in the building. Additionally they can learn more about their heritage and ancestors.
- 2. MEDITATIVE TECHNOLOGY ROOM**  
The meditative technology room provides VR headsets where people can personalise the virtual graveyard for the deceased. This virtual space can then be projected within the room. Typically, this space is also very calming where people can sit and watch these landscapes being projected.
- 3. CRYSTAL COURTYARDS**  
These courtyards on the upper levels are decorated with technology walls and remembrance crystals.
- 4. BATHROOM**
- 5. PUBLIC LIFT/STAIRS**
- 6. STAFF LIFT/STAIRS**
- 7. PUBLIC DISPLAY AREA**  
People can view a public display of urns, crystals and caskets provided by the funeral home.



- 1. PUBLIC LOBBY**
- 2. RECEPTION**
- 3. MEETING SPACE**
- 4. BATHROOM**
- 5. PUBLIC LIFT/STAIRS**
- 6. STAFF LIFT/STAIRS**
- 7. MECHANICAL/SERVICES ROOM**
- 8. STAFF OFFICES**
- 9. STAFF BREAK ROOM**
- 10. CRYSTAL MAKING ROOM**
- 11. ASHES STORAGE + PREPARATION**
- 12. WATER CREMATION FACILITY**
- 13. DRESSING SPACE**
- 14. FUNERAL CEREMONY SPACE**
- 15. PRIVATE RITUAL ROOM**
- 16. ENDING SPACE**



- 1. WAITING SPACE**  
Before the ceremony begins where the venue is being prepared, bereaved are conducting rituals or the body is being prepared funeral attendees gather here. They may have refreshments here or other rituals.
- 2. FUNERAL CEREMONY SPACE**  
People enter, and they can sit to attend the funeral. There may be a stage where the casket, a photo of the deceased and a host frequents. This entire space has a typical layout however can be customized. Wall/ceiling projections and lightings can be customized. It can also be equipped with cameras for virtual funerals. Projections can show videos made by the bereaved
- 3. PRIVATE RITUAL ROOM**  
A small room adjacent to the ceremony space allows the bereaved to conduct any specific religious death rituals.
- 4. GARDEN**
- 5. PUBLIC LIFT/STAIRS**
- 6. STAFF LIFT/STAIRS**



Sections



Elevations

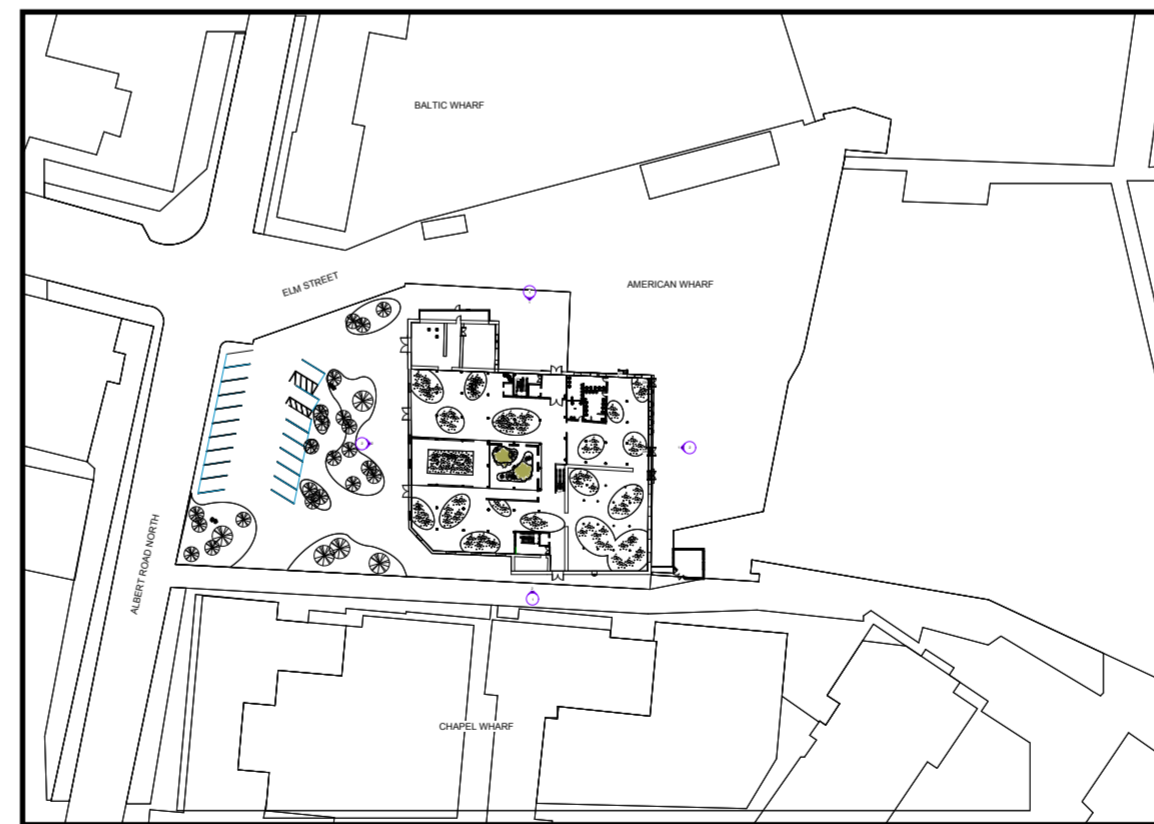


### The Historic Chapel Mill

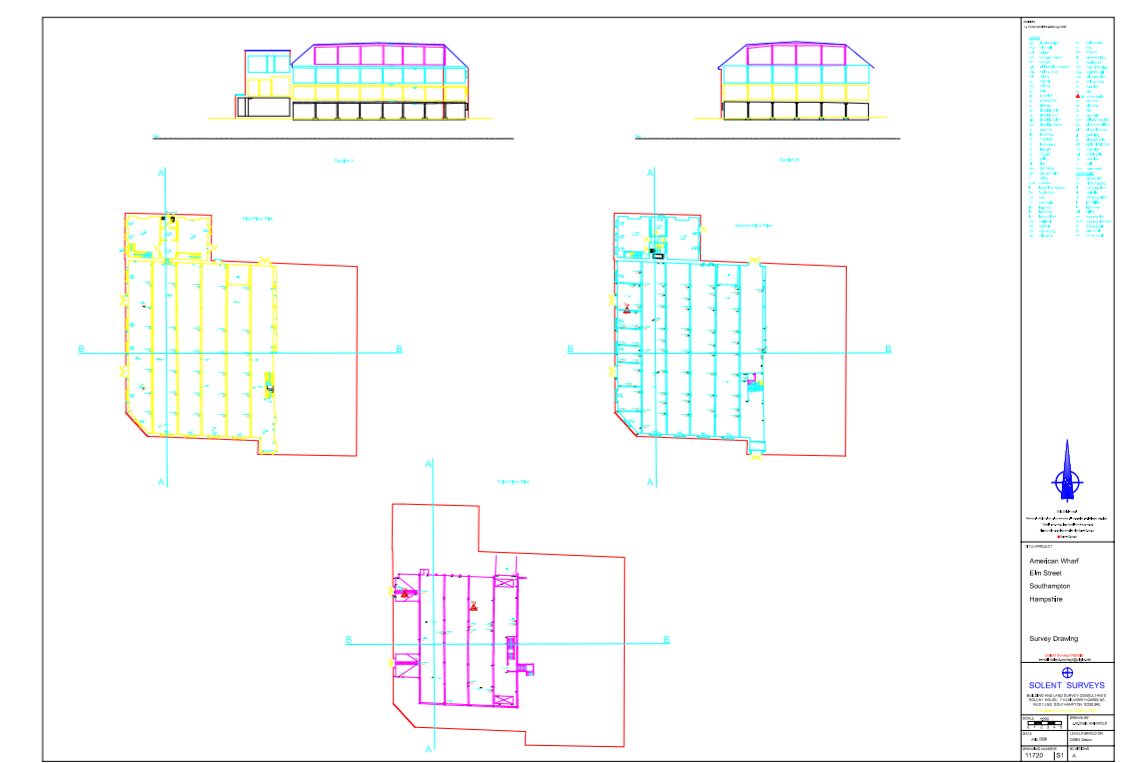
Chapel Mill is on the English Heritage at risk register and is a grade II listed building. In the conversion approach, new elements added to the building should clearly be distinguished from the historical elements. These new additions will also have a minimum impact on the existing structure.

This project would contrast the surrounding buildings which are mainly residential and industrial. It would generate more activity in the area as a public space which contrasts existing deathscapes in Southampton.

### Level 0 Plan



### Original Site Drawings



Chapel Mill  
American Wharf  
SO14 5BX  
Southampton

