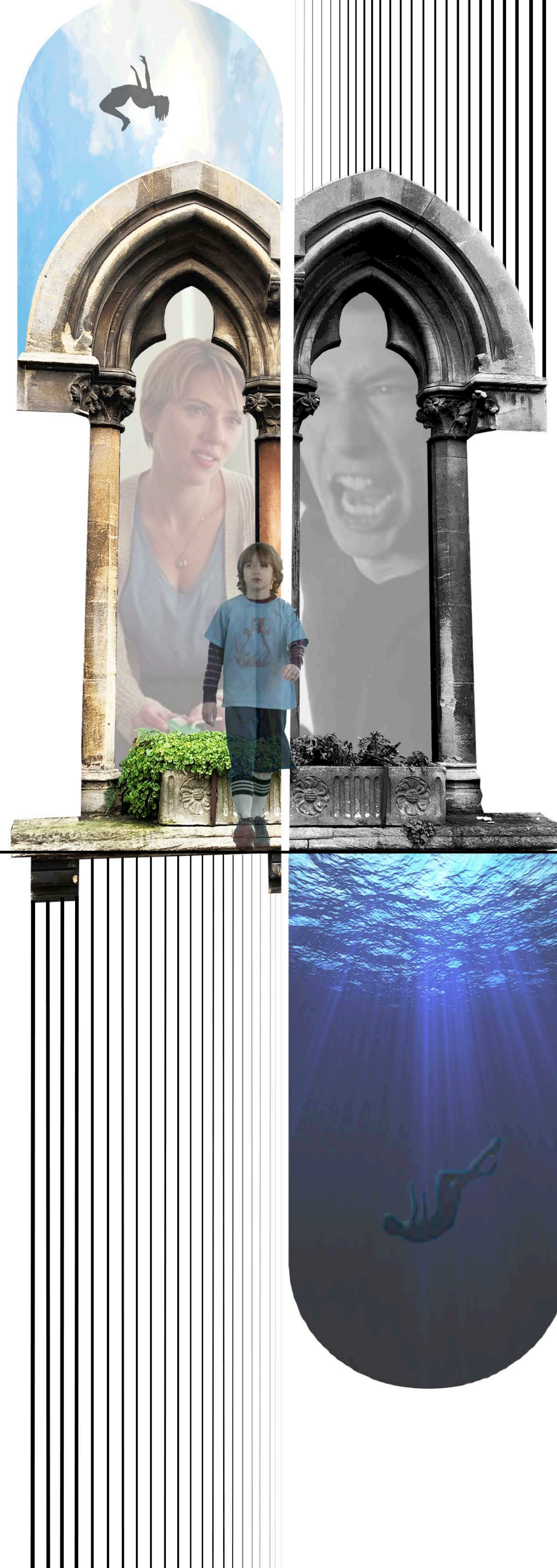


Film - The Marriage Story

My project explored the difficulties in divorce and the impact it has on every individual in a family setting. I designed a home for the three main characters in the film, The Marriage Story. From analysing each of their characters, I have designed various spaces, which interpret how they feel during this time.

During the divorce the dad loses his connection with his son due to the mother normally taking over this role, therefore he starts to lose his temper as he feels he is missing out. It has caused for a lot of discomfort for the son which is then shown throughout the design of the home as he feels disconnected. The parents are very different due to how each of them feel whilst going through the divorce, which is shown by using various colours and materials.

This is to signify how both Nicola and Charlie are dealing with their **divorce**. Charlie is dealing with the divorce in a very different way to Nicola. He is finding it very **draining** and **stressful** whereas Nicola seems to be handling it a lot better. Their **son Henry** is in the middle of both parents as he is the only thing keeping the two together.



Design development



Nicola's relationship with her son.
There is stronger strings and more of them.



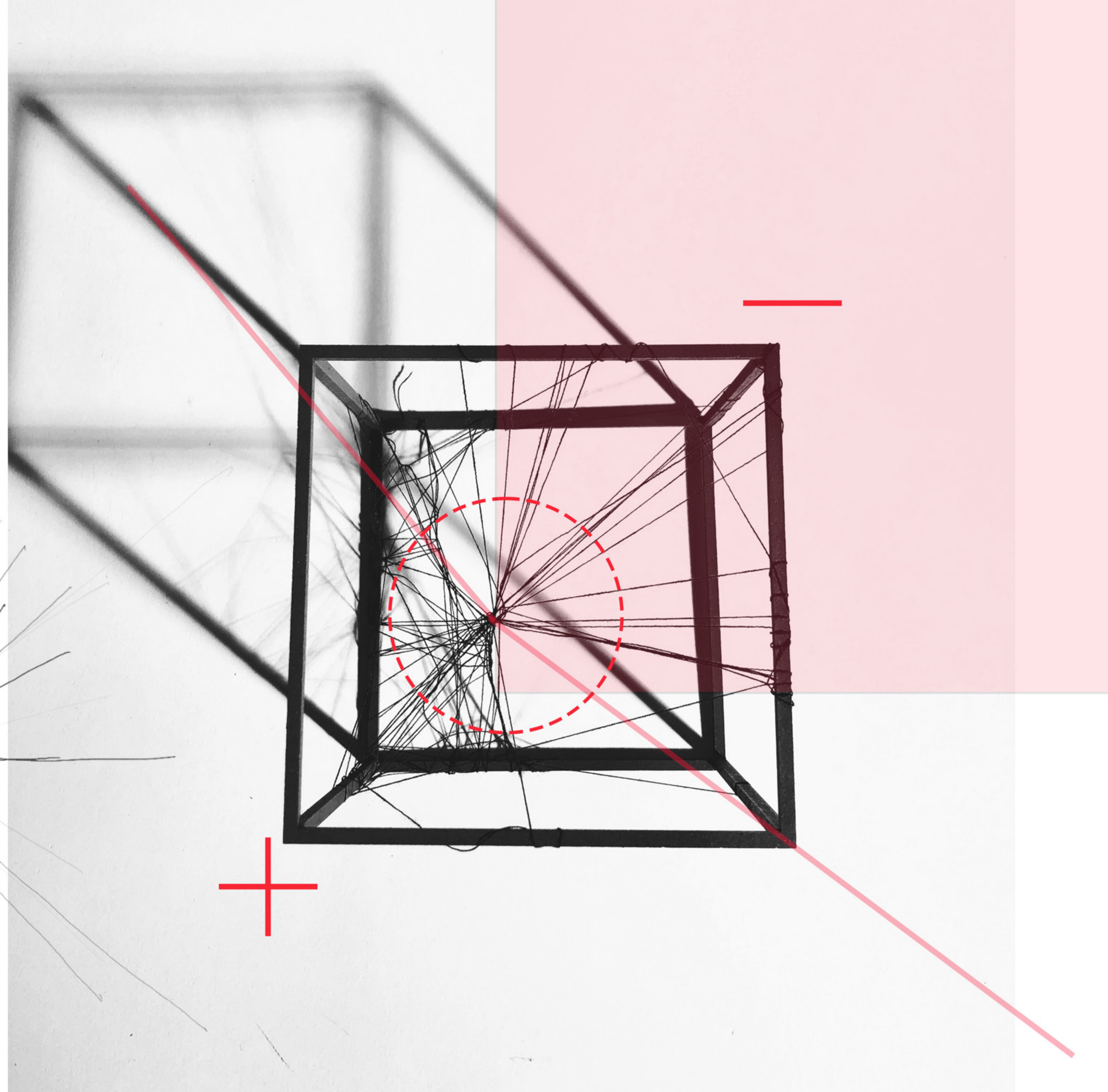
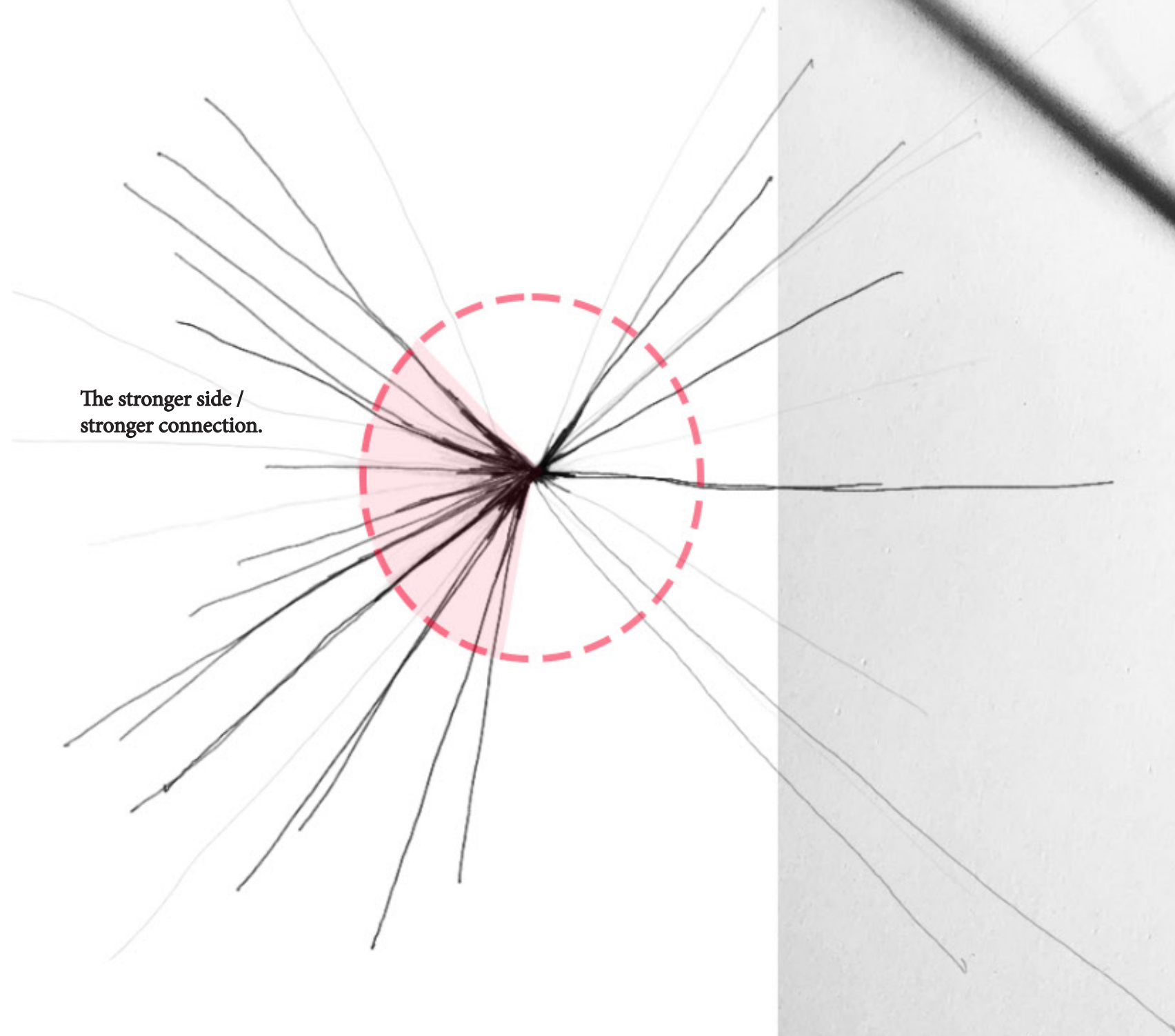
Charlie's relationship with his son.
Less strings and a lot thinner.

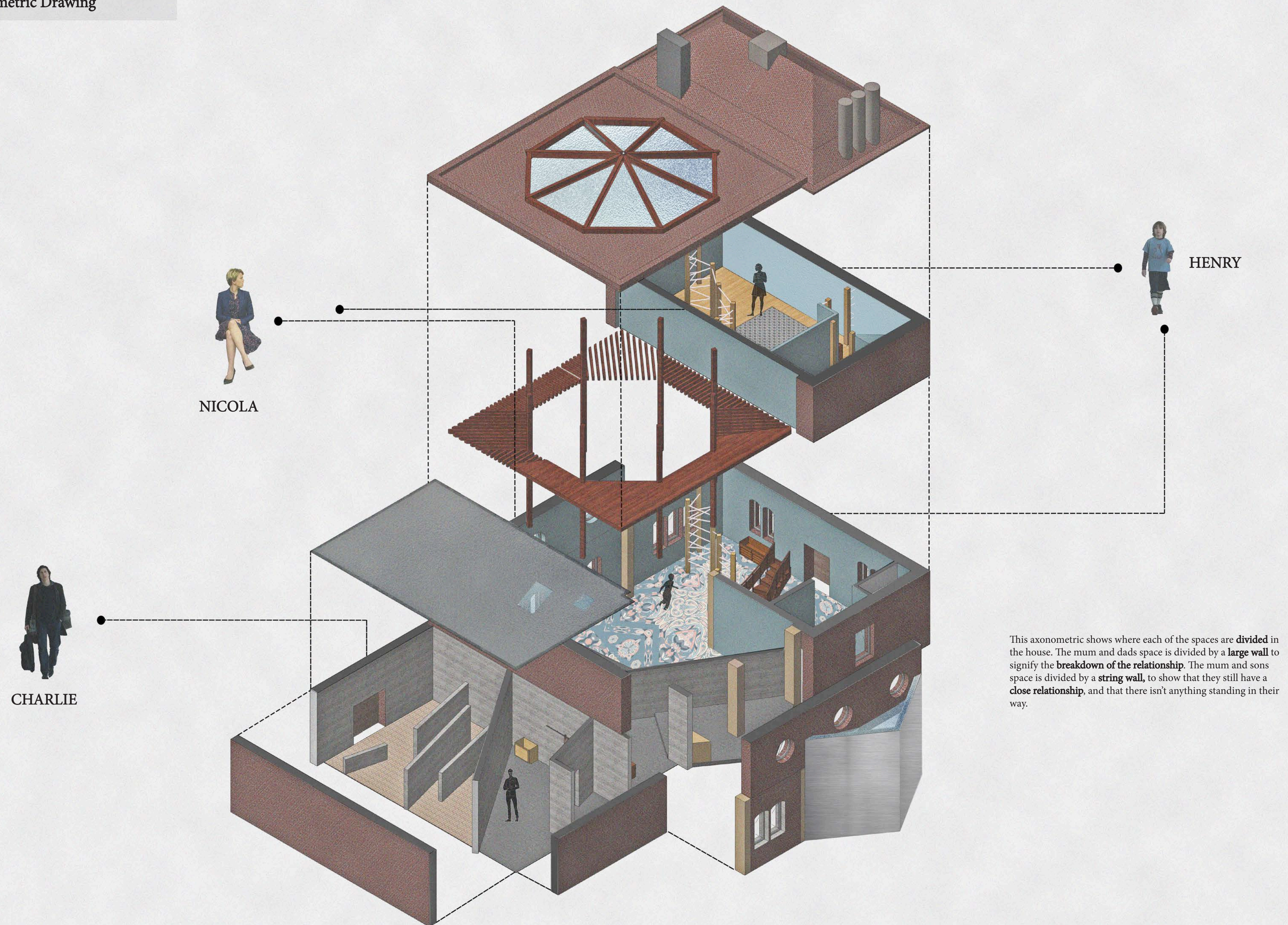


Henry is the center of his mum and
dads relationship.

This image on the right is of a box structure, which I made
using string, to portray the relationship between the mum,
dad and son.

The stronger side /
stronger connection.





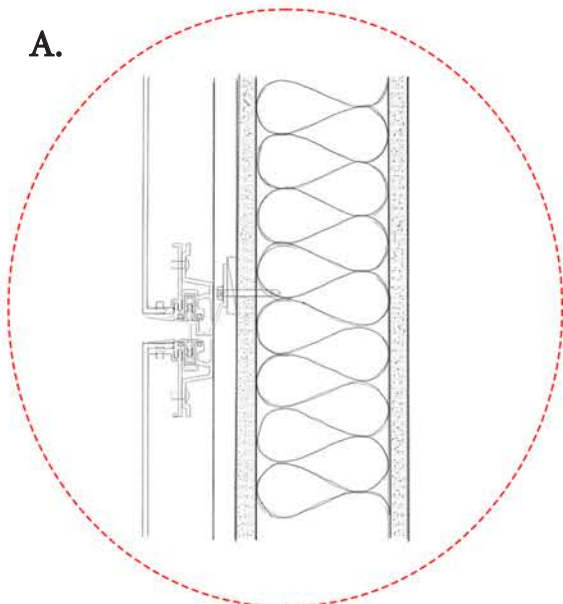
NICOLA

CHARLIE

HENRY

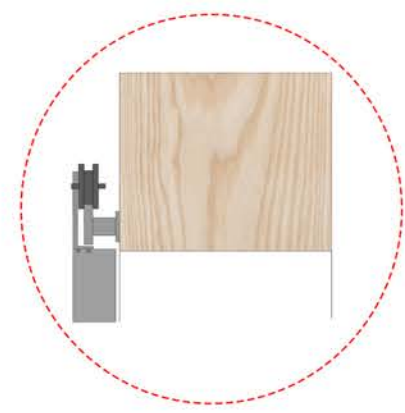
This axonometric shows where each of the spaces are **divided** in the house. The mum and dads space is divided by a **large wall** to signify the **breakdown of the relationship**. The mum and sons space is divided by a **string wall**, to show that they still have a **close relationship**, and that there isn't anything standing in their way.

Steel Lintel - helps to support the wall above as it's supported by pillars.

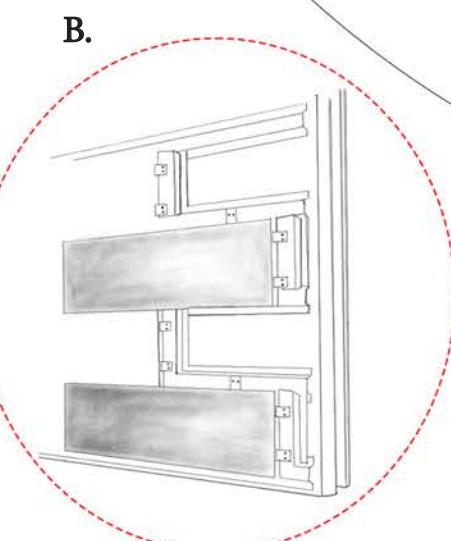
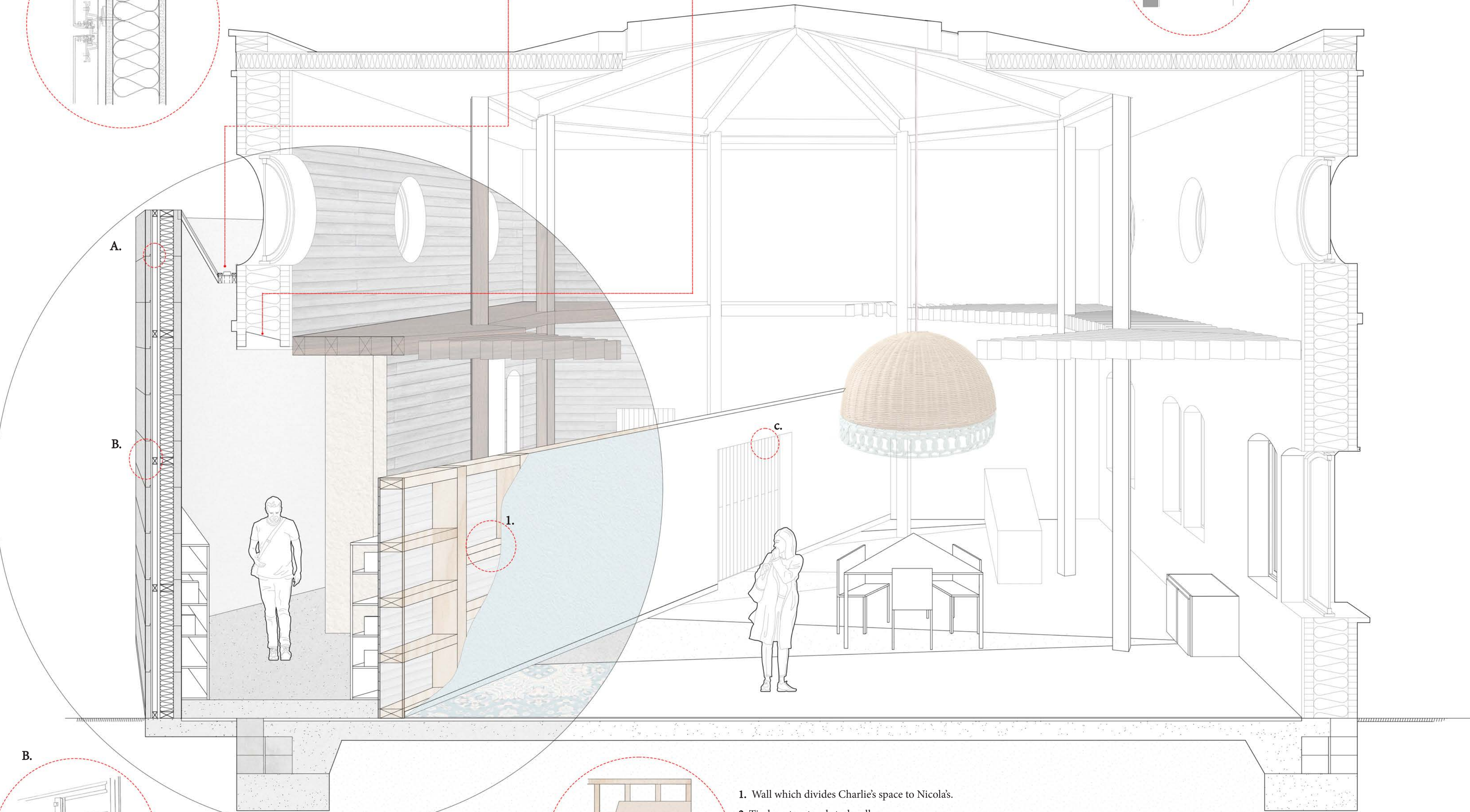


A. Joint detail - showing how the stainless steel cladding connects to the exterior of the building.

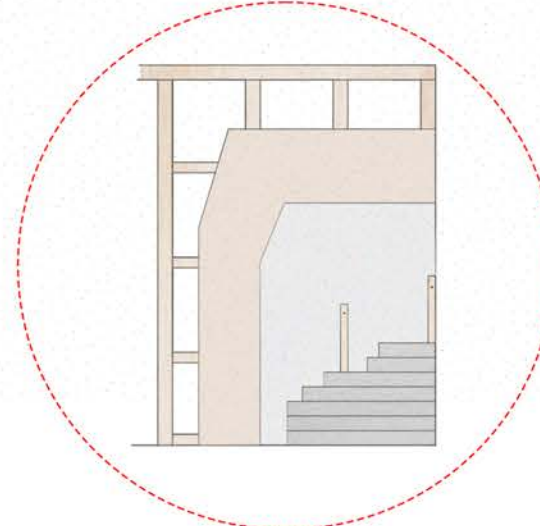
Gutter system which allows for the water to run off the roof easily.



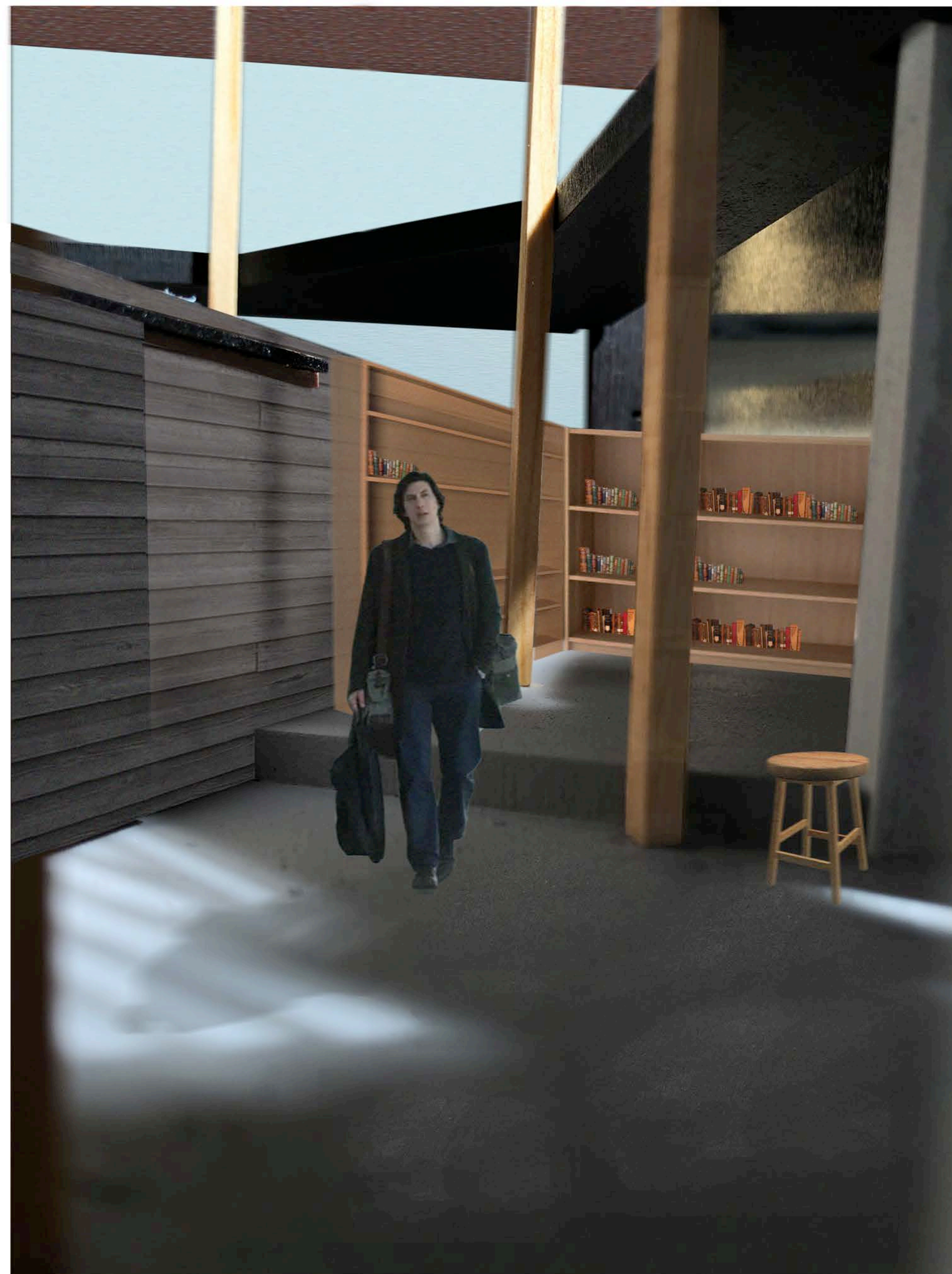
C. Detail showing how the weathered larch door slides.



B. How the stainless steel cladding connects.



- 1. Wall which divides Charlie's space to Nicola's.
- 2. Timber structural stud wall.
- 3. Fibreboard plywood.
- 4. Building paper.
- 5. Furring strips.
- 6. Cladding.



CHARLIE'S SPACE

Charlie has his own separate living space to Nicola and his son Henry. His space is dark and dull to represent his emotional state during their divorce.

