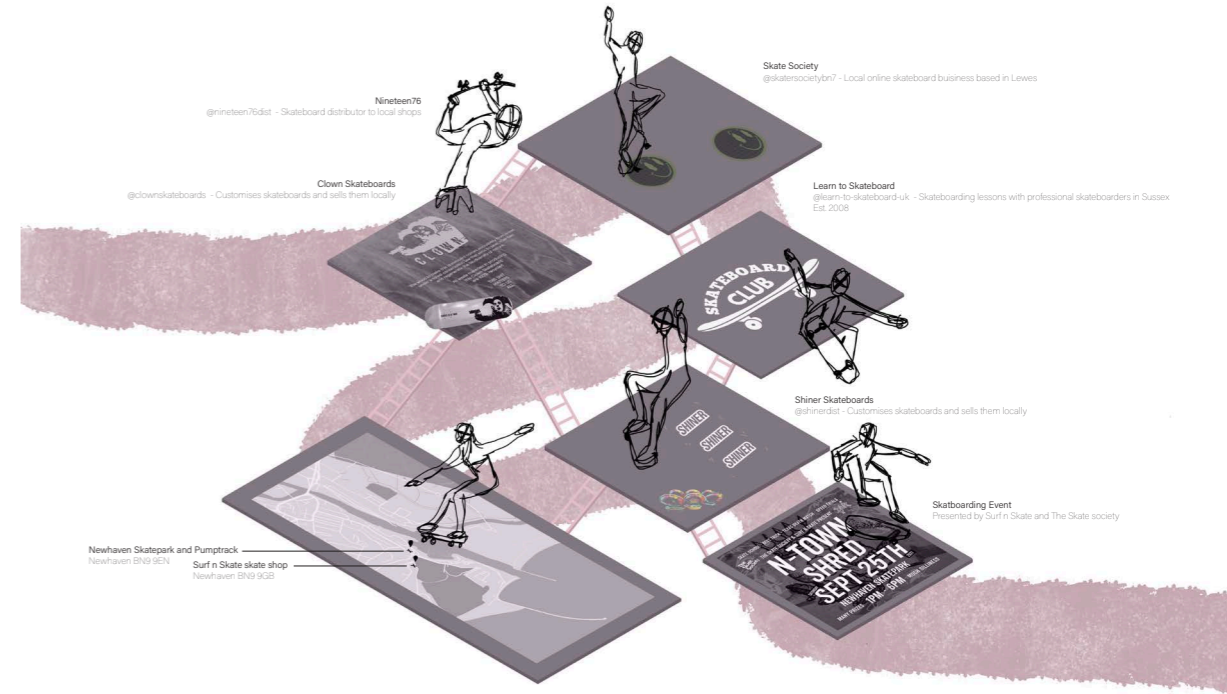


There is a prevailing issue of individuals who share the love for skateboarding; yet are unable to fully have their freedom in practicing this sport without being restrained by rules, regulations and/or exterior forces. Newhaven has a strong skateboarding culture, however lacks a home for it. This is a proposal to start a skateboard manufacturing programme using the abandoned Newhaven Chapel; as well as bring the skateboarding community together by providing a space where they are able to unrestrictedly be dangerous for sake of liberation.

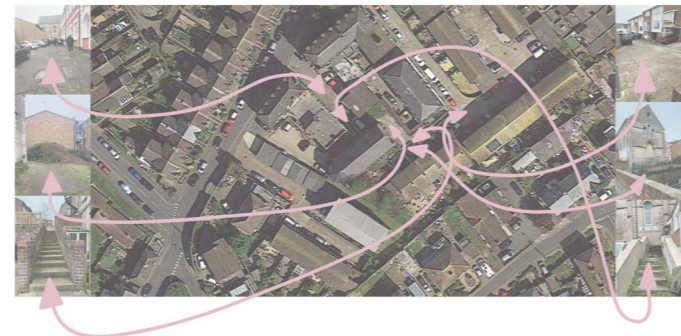


## EXISTING SKATEBOARDING CULTURE



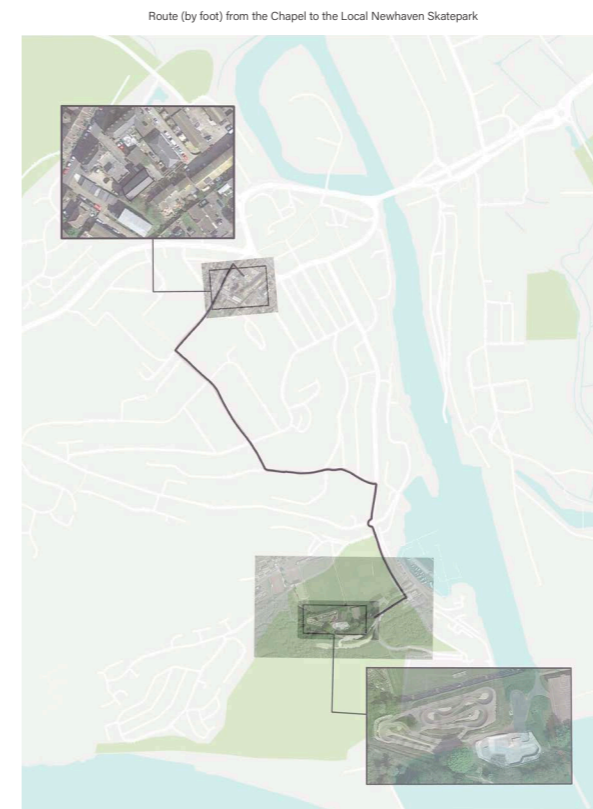
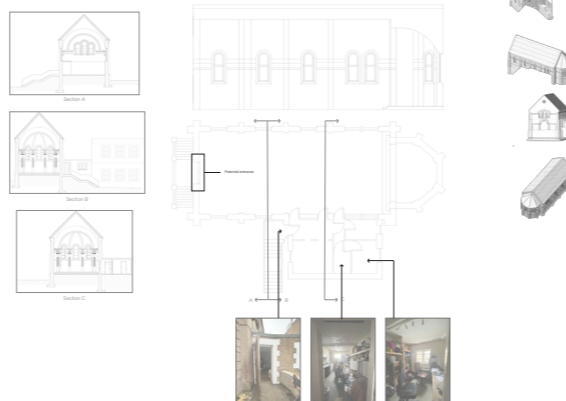
There is evidence of an existing 'skate culture' in Newhaven. From skateboarding lessons and competitions, to customising skateboards and selling them. However, they're mostly digital (Instagram accounts, Facebook groups, websites), and the town lacks a physical place where the skating community can come together.

## UNDERSTANDING THE SITE



Newhaven Chapel (exterior). Pictures taken from different angles, with the triangles representing the perspective and direction in which they were taken.

### NEWHAVEN CHAPEL HARD SURVEY



The only existing home to skateboarders in Newhaven is the local skatepark. The texture of the ground skateboarders skate over is something they take into account as it affects their performance and ability.

CREATING A NEW THRESHOLD



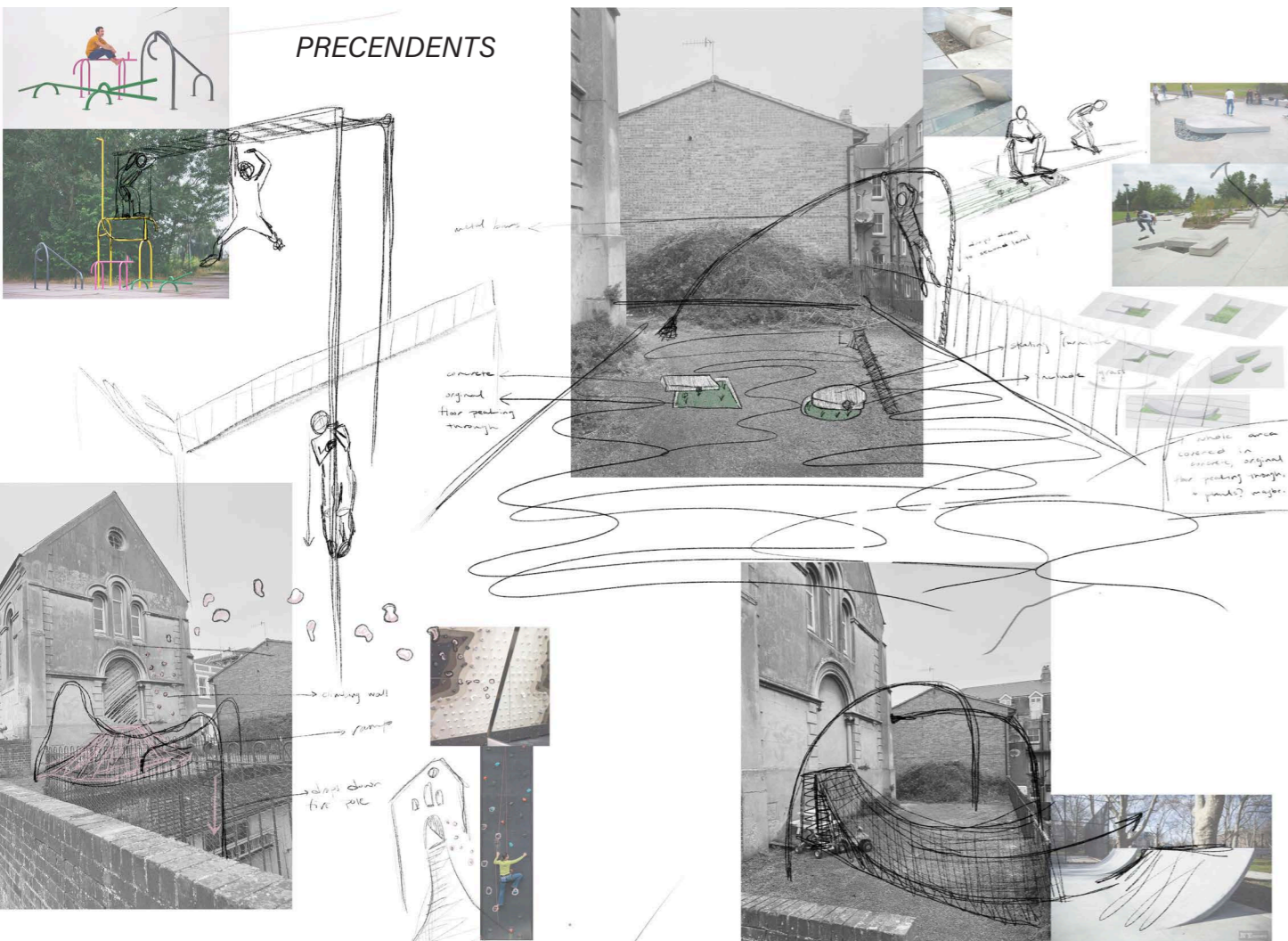
Taking down this part of the wall is the fundamental 'ingredient' in creating a relationship between the exterior and the interior part of the site; where the workers and visitors interact, and the manufacturing of skateboards is weaved in with the experience of practicing the sport itself.

INTRODUCING THE CONCEPT



A concrete slab rested over the original ground as it is ideal for skating. Additionally, pieces of the slab taken out to expose the authentic Newhaven ground. The piece of the main wall removed to allow interaction between the exterior and interior; the workers and the visitors.

PRECEDENTS



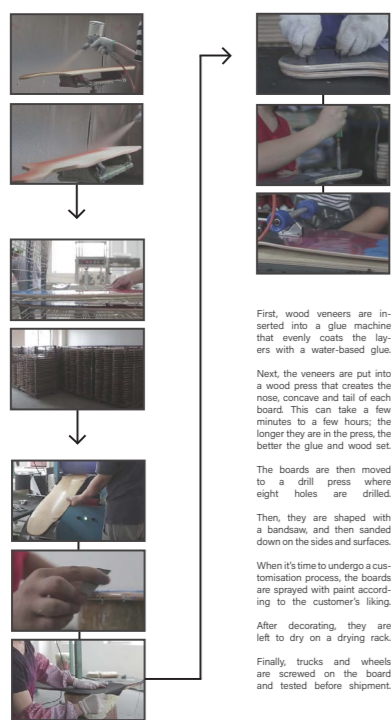
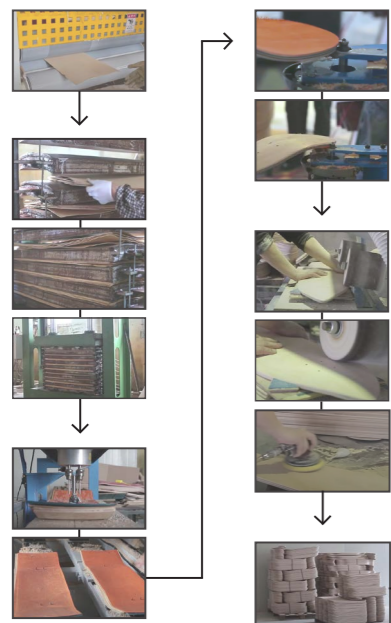
FRAGMENTATION



Fragments removed from the chapel to maintain the history, by repurposing them as skating furniture. Projected on to the ground to create new culture.



# MANUFACTURING PROCESS



First, wood veneers are inserted into a glue machine that evenly coats the layers with a water-based glue.

Next, the veneers are put into a wood press that creates the nose, concave and tail of each board. This can take a few minutes to a few hours; the longer they are in the press, the better the glue and wood set.

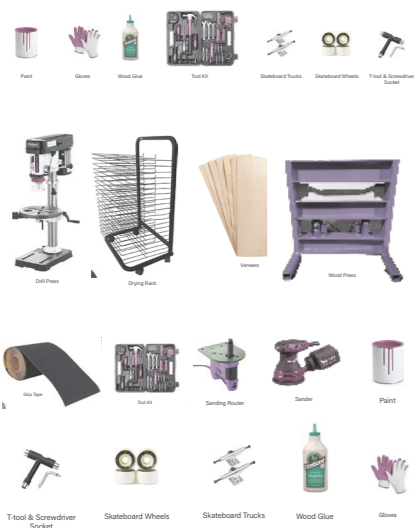
The boards are then moved to a drill press where eight holes are drilled.

Then, they are shaped with a bandsaw, and then sanded down on the sides and surfaces.

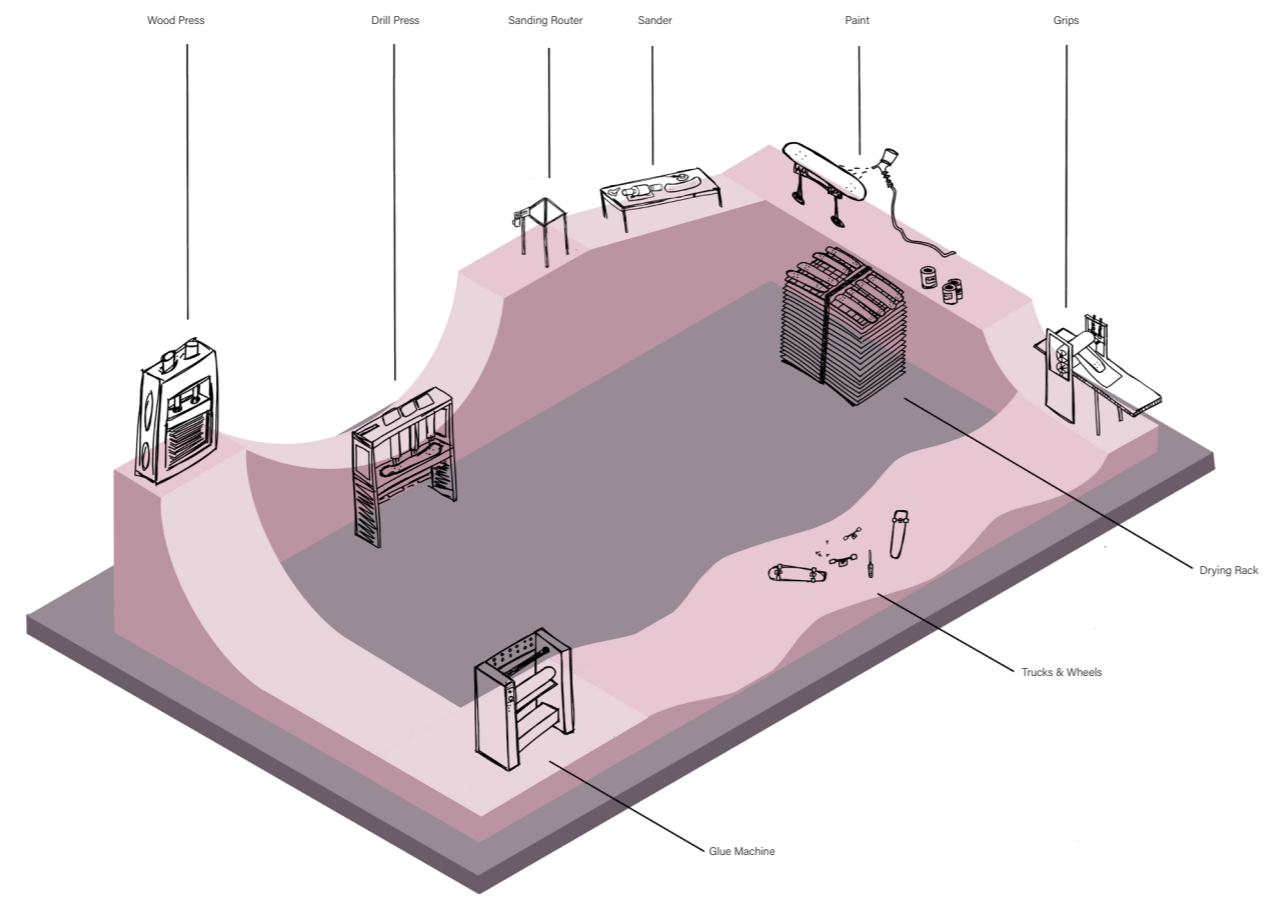
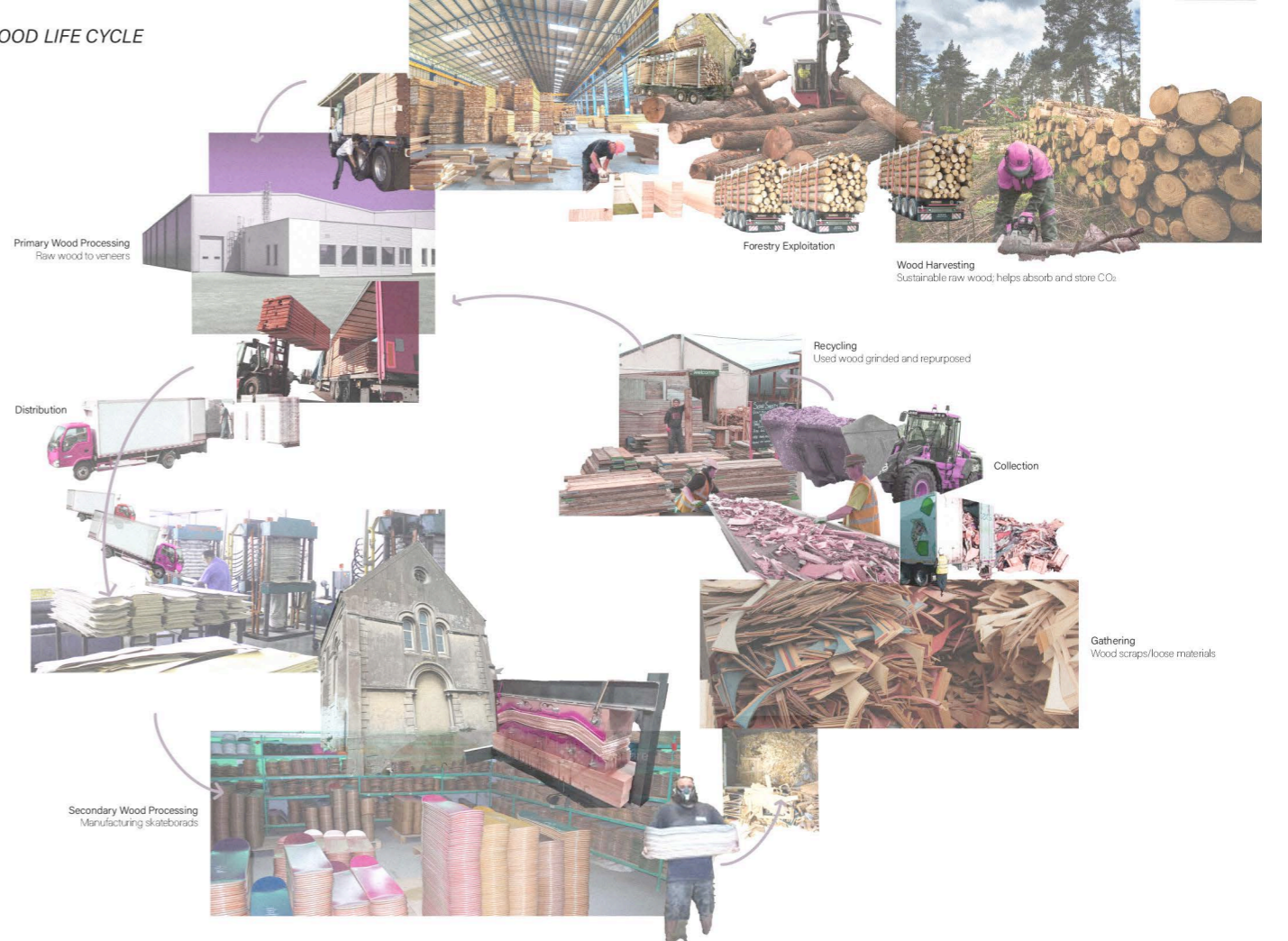
When it's time to undergo a customisation process, the boards are sprayed with paint according to the customer's liking.

After decorating, they are left to dry on a drying rack.

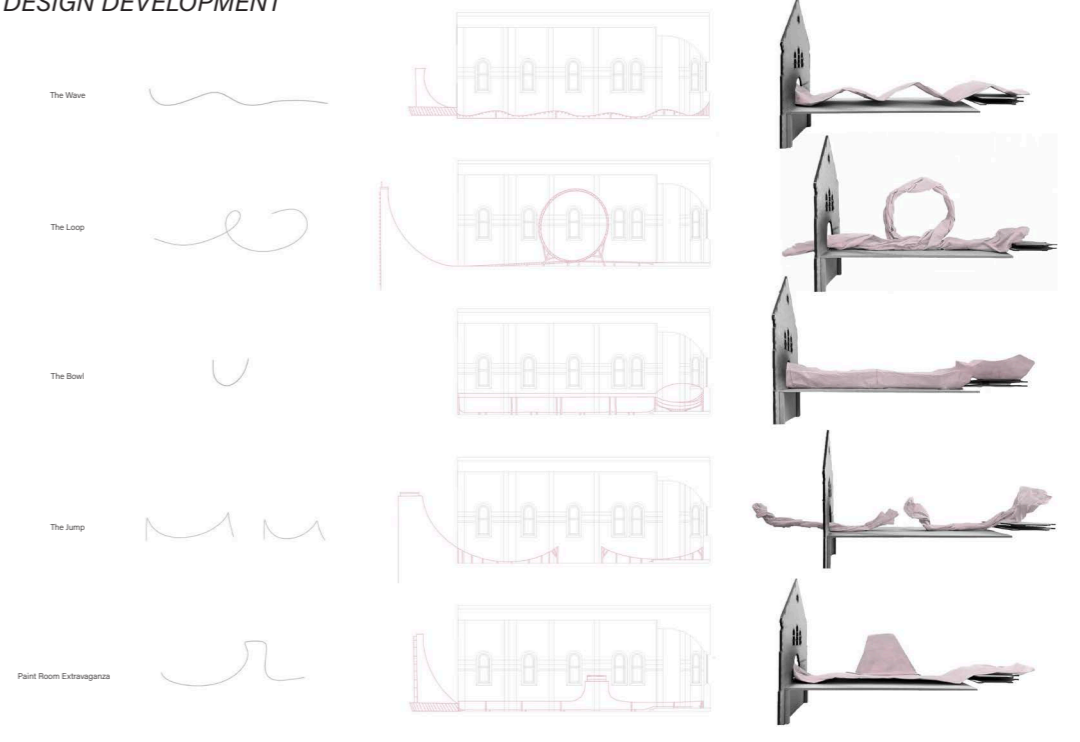
Finally, trucks and wheels are screwed on the board and tested before shipment.

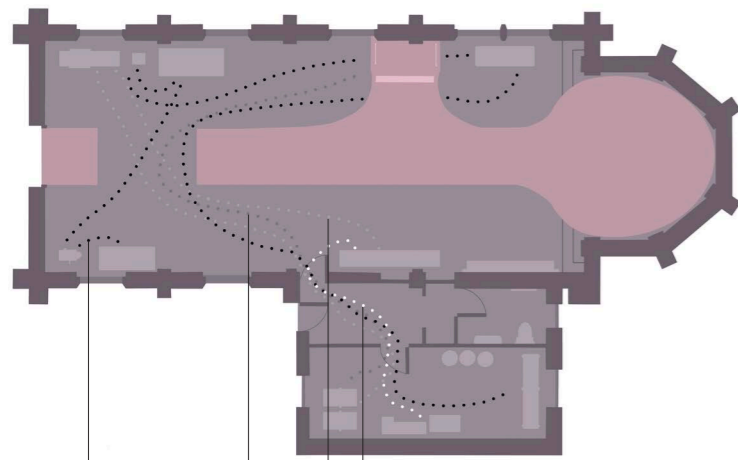
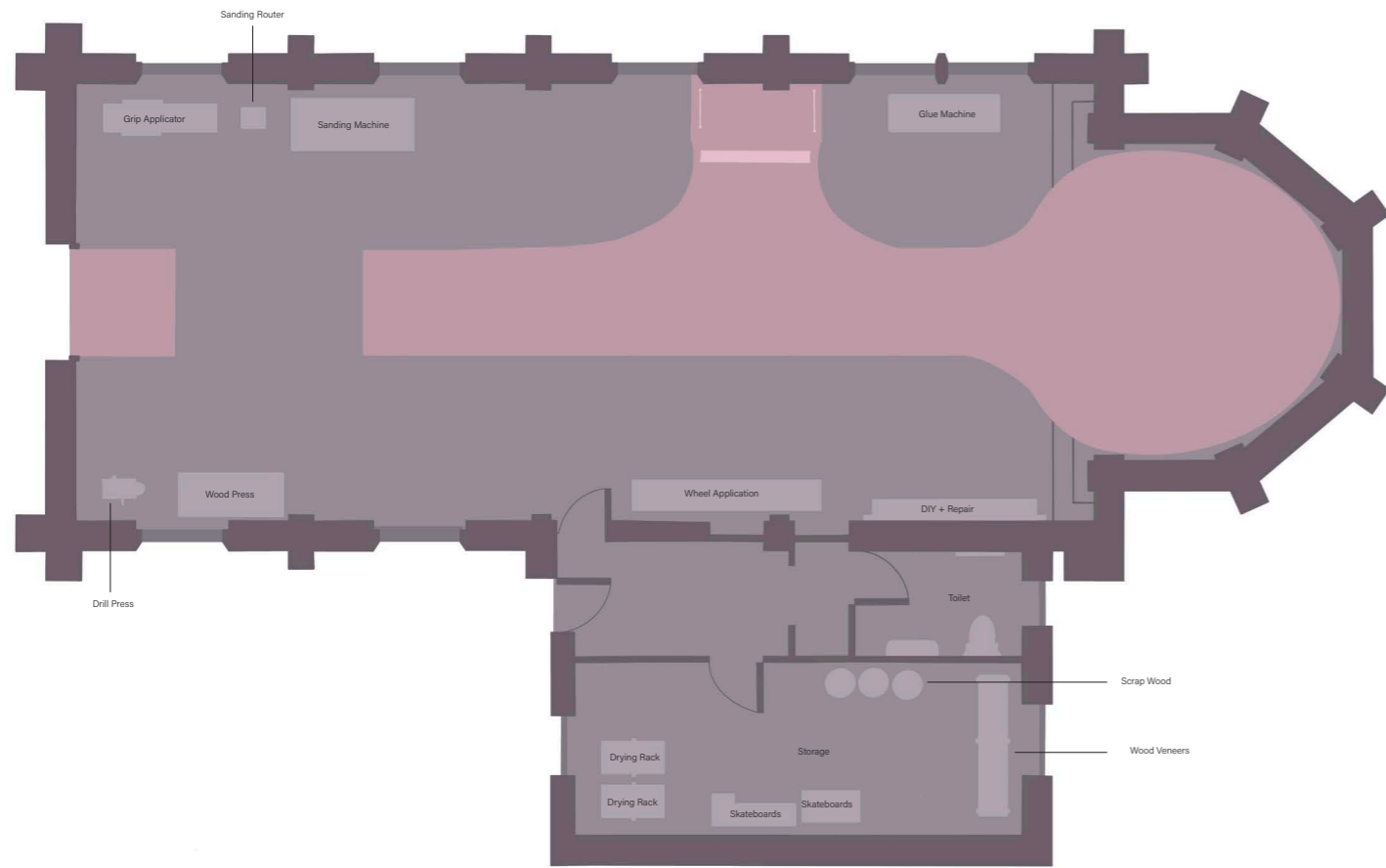


# WOOD LIFE CYCLE



# DESIGN DEVELOPMENT





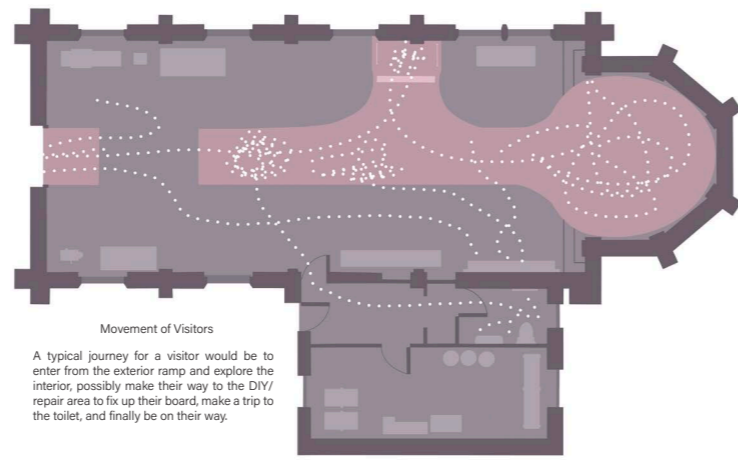
Each colour represents a continuous route from location A to location B; with the intention of completing one part of the manufacturing process

Completed and ready, skateboards go back to storage until distribution

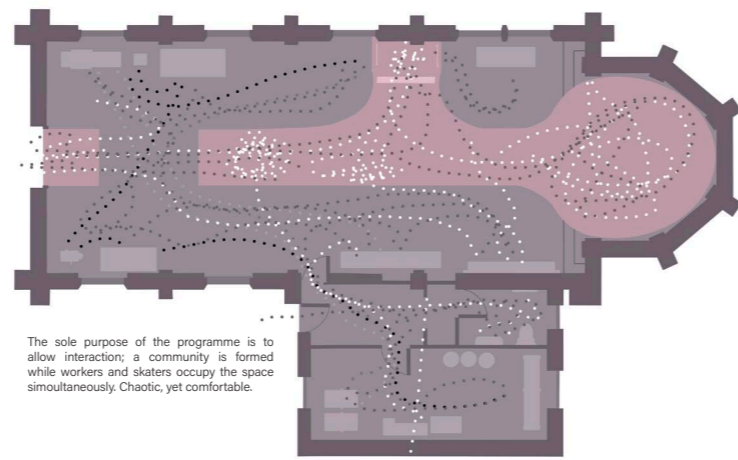
Collecting the dry skateboards from the storage room for grip and wheel application

Returning the skateboards to the storage room to dry on the racks

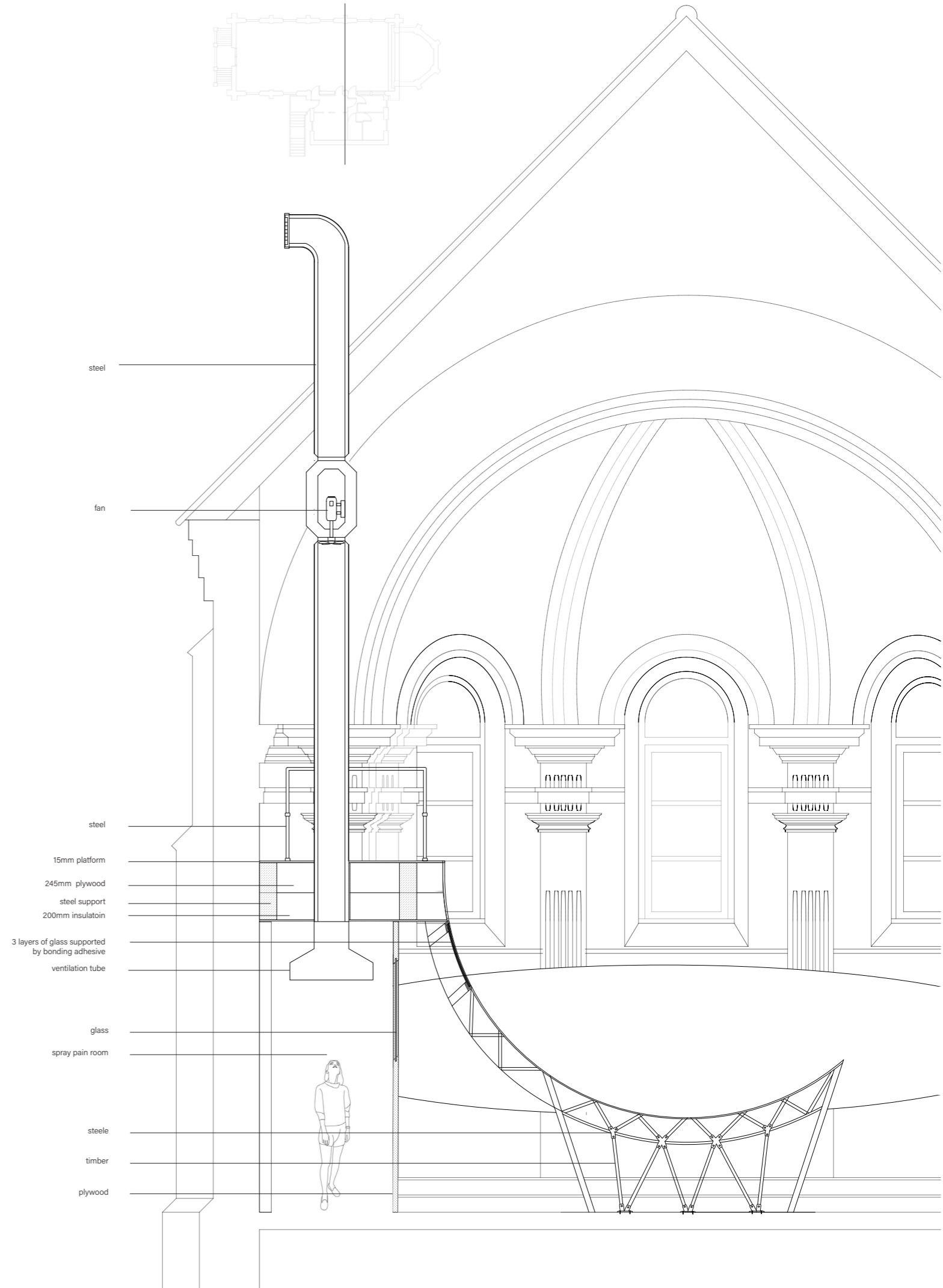
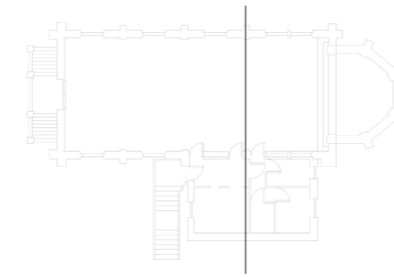
Collecting the wood veneers; ending up in the paint room

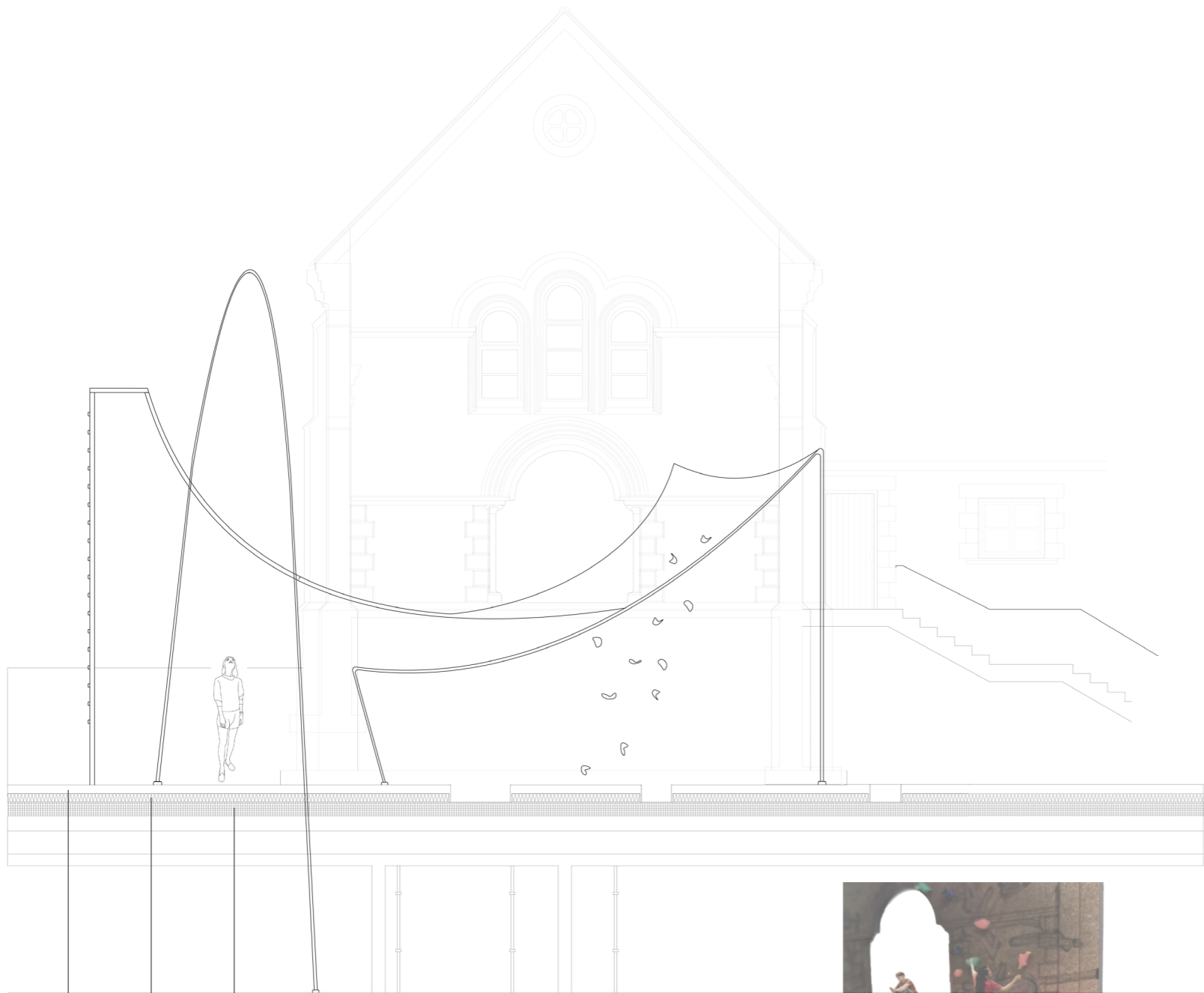


A typical journey for a visitor would be to enter from the exterior ramp and explore the interior, possibly make their way to the DIY/repair area to fix up their board, make a trip to the toilet, and finally be on their way.



The sole purpose of the programme is to allow interaction; a community is formed while workers and skaters occupy the space simultaneously. Chaotic, yet comfortable.





150mm  
concrete

150mm  
insulation

250mm  
original ground

