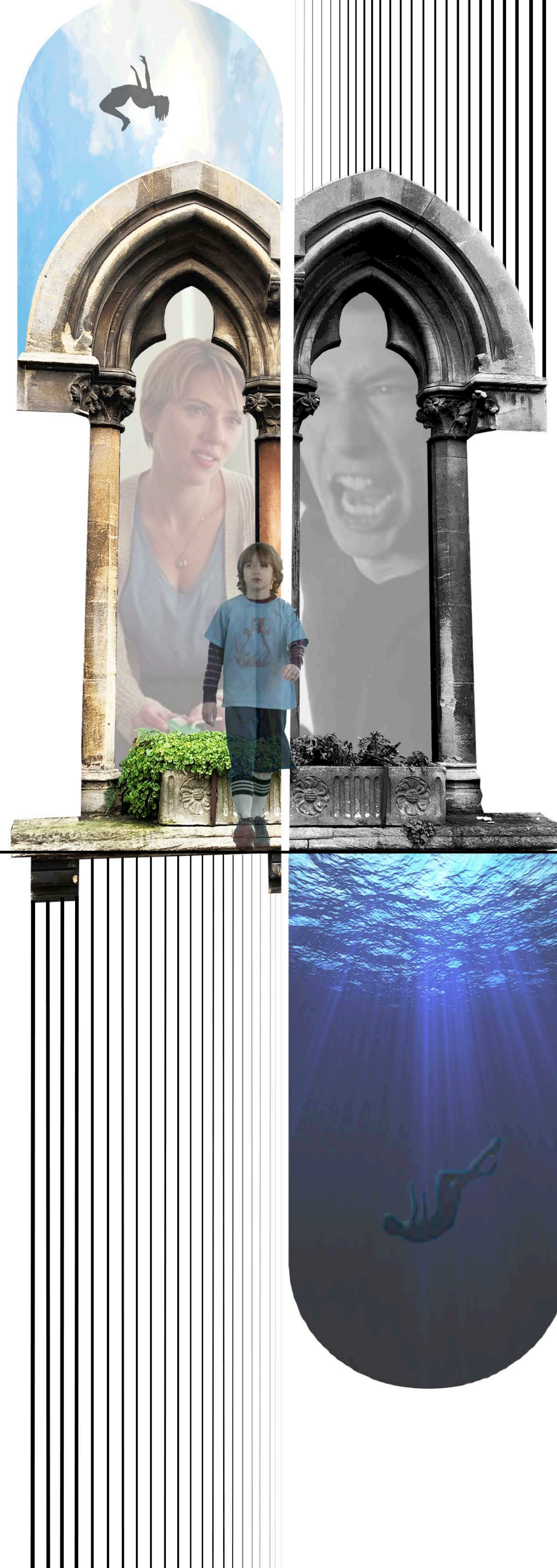


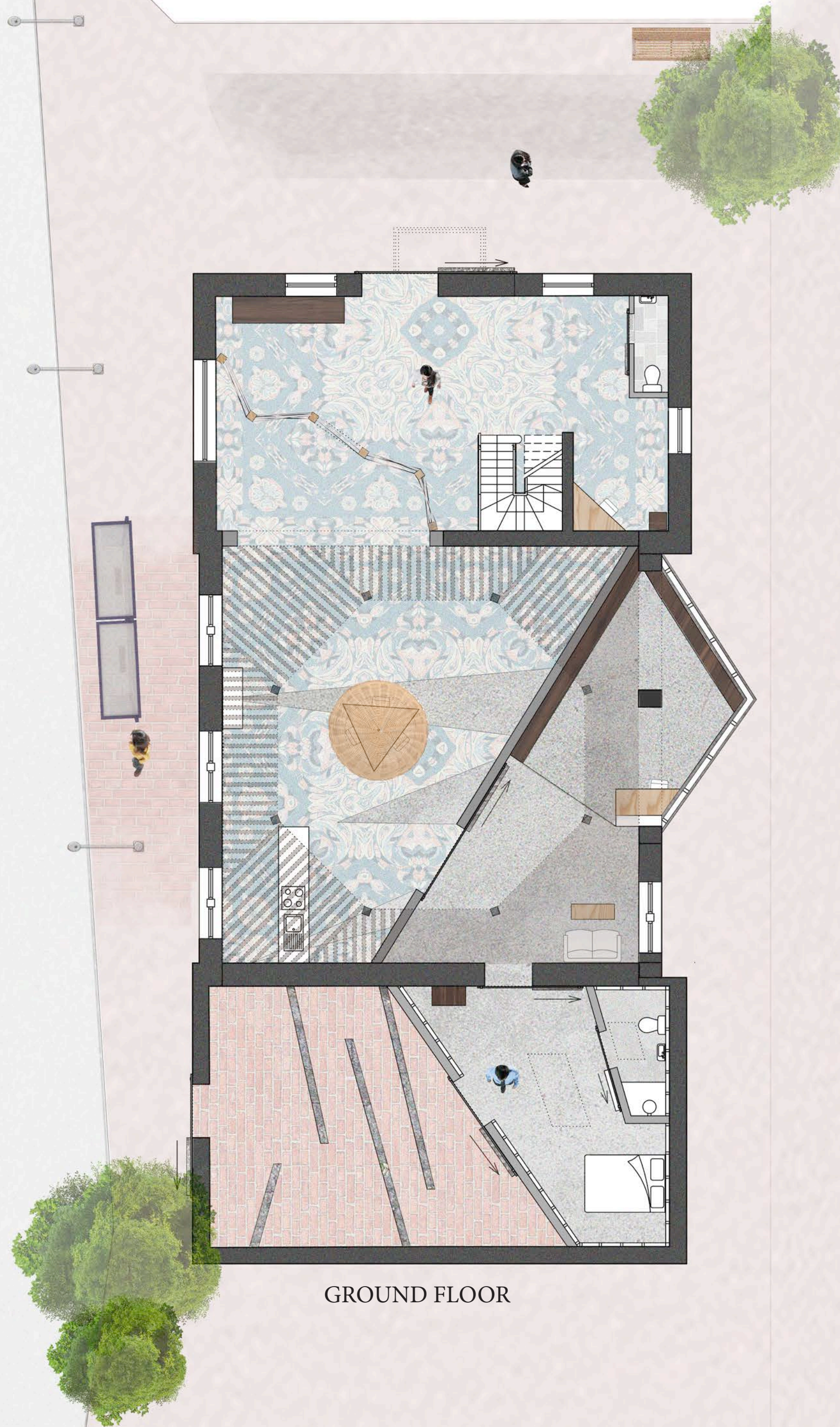
Film - The Marriage Story

How someone feels inside a space is very important as it effects our interpretation of it, but instead designing spaces based off someone's personality and emotions could help to create interesting spaces, which therefore people connect with more. Designing spaces based off peoples emotions and relationships with one another will create new designs and new spaces which people can feel more comfortable in.

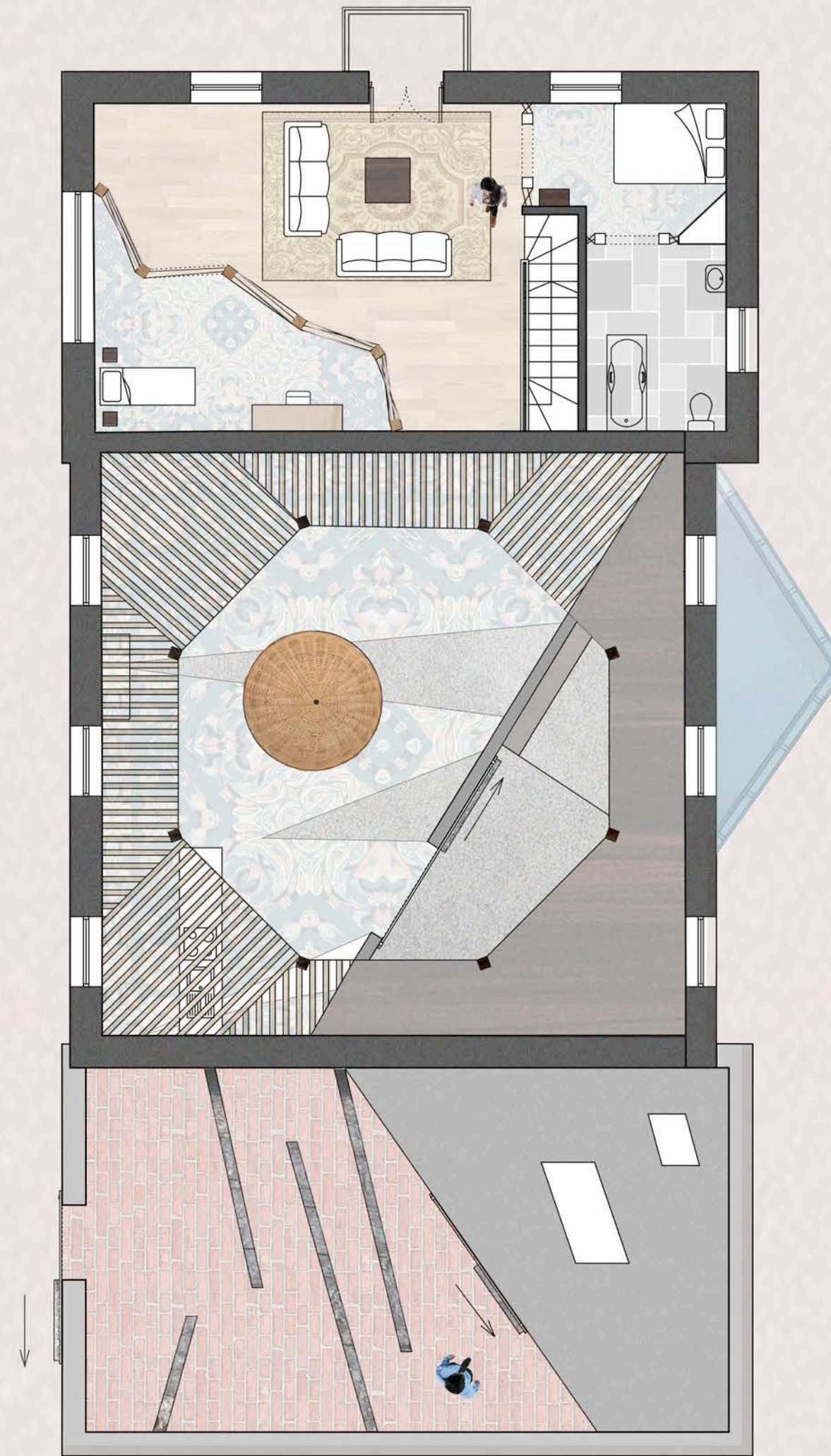
For my project I designed a home for the three main characters in the film, The Marriage Story. From analysing each of their characters, I have designed various spaces, which interpret how they feel during this time. From looking into each of their characters each of them have very different rooms due to the characters dealing with their emotions very differently during this time.

This is to signify how both Nicola and Charlie are dealing with their **divorce**. Charlie is dealing with the divorce in a very different way to Nicola. He is finding it very **draining** and **stressful** whereas Nicola seems to be handling it a lot better. Their **son Henry** is in the middle of both parents as he is the only thing keeping the two together.

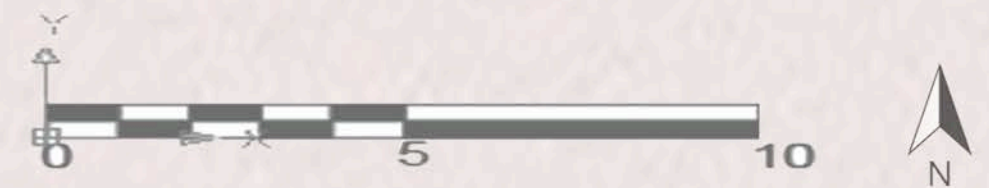


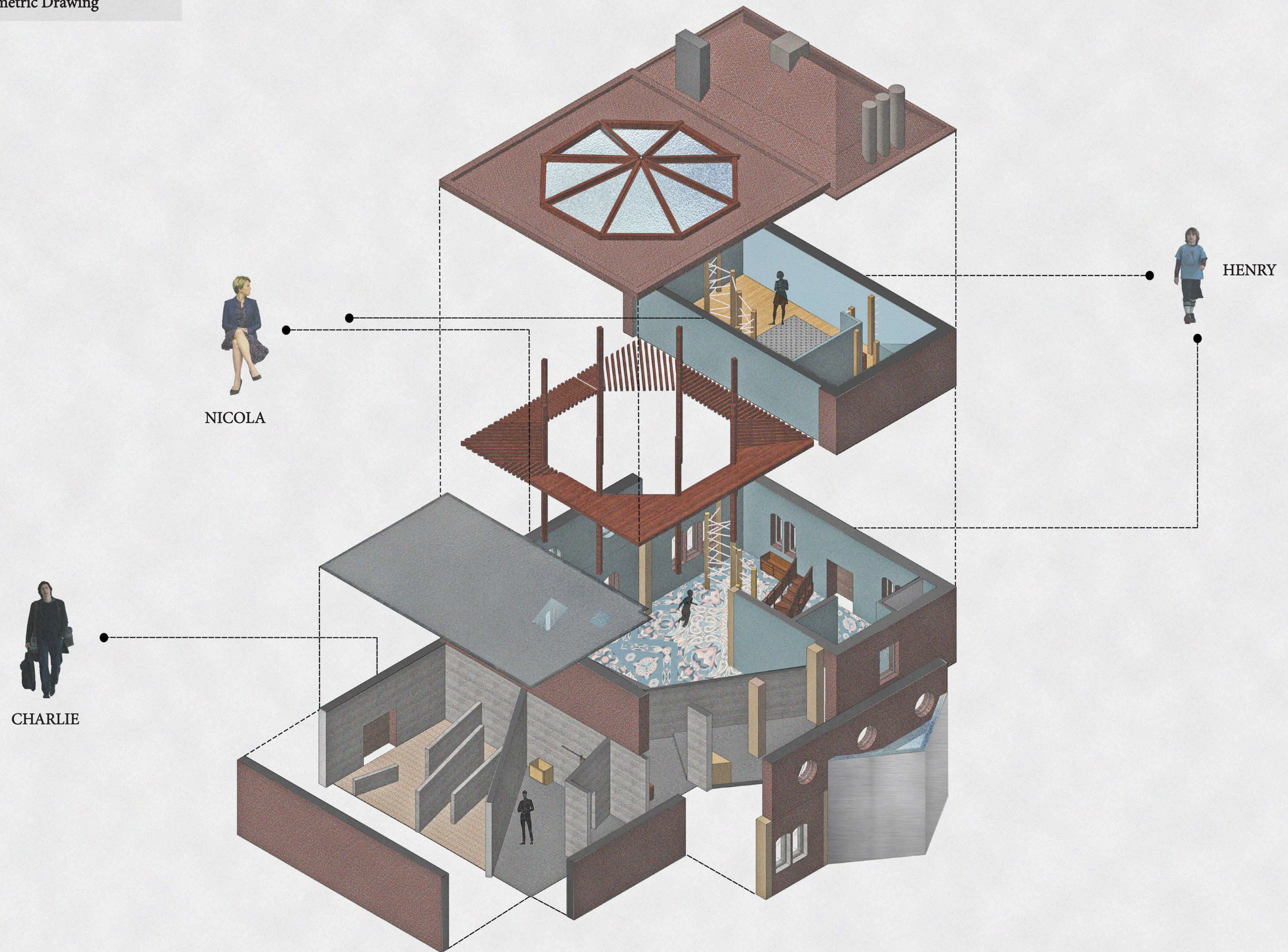


GROUND FLOOR

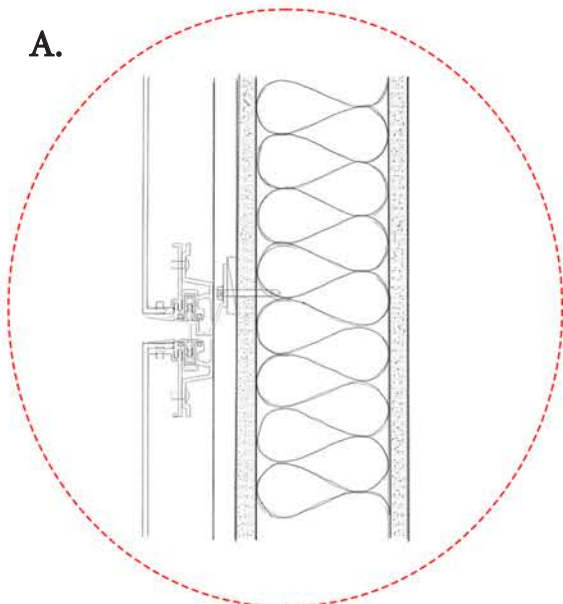


FIRST FLOOR



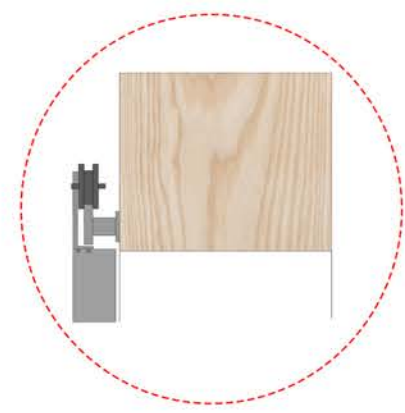


Steel Lintel - helps to support the wall above as it's supported by pillars.

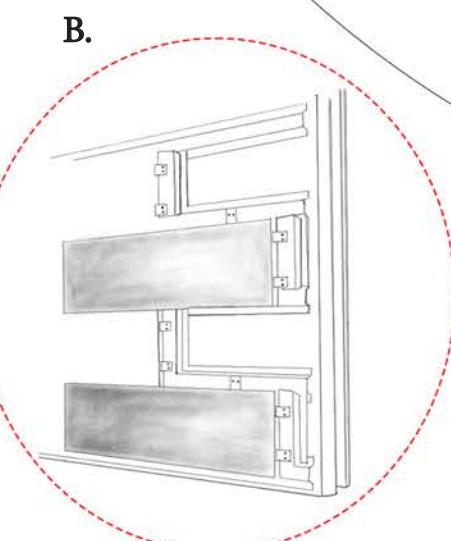
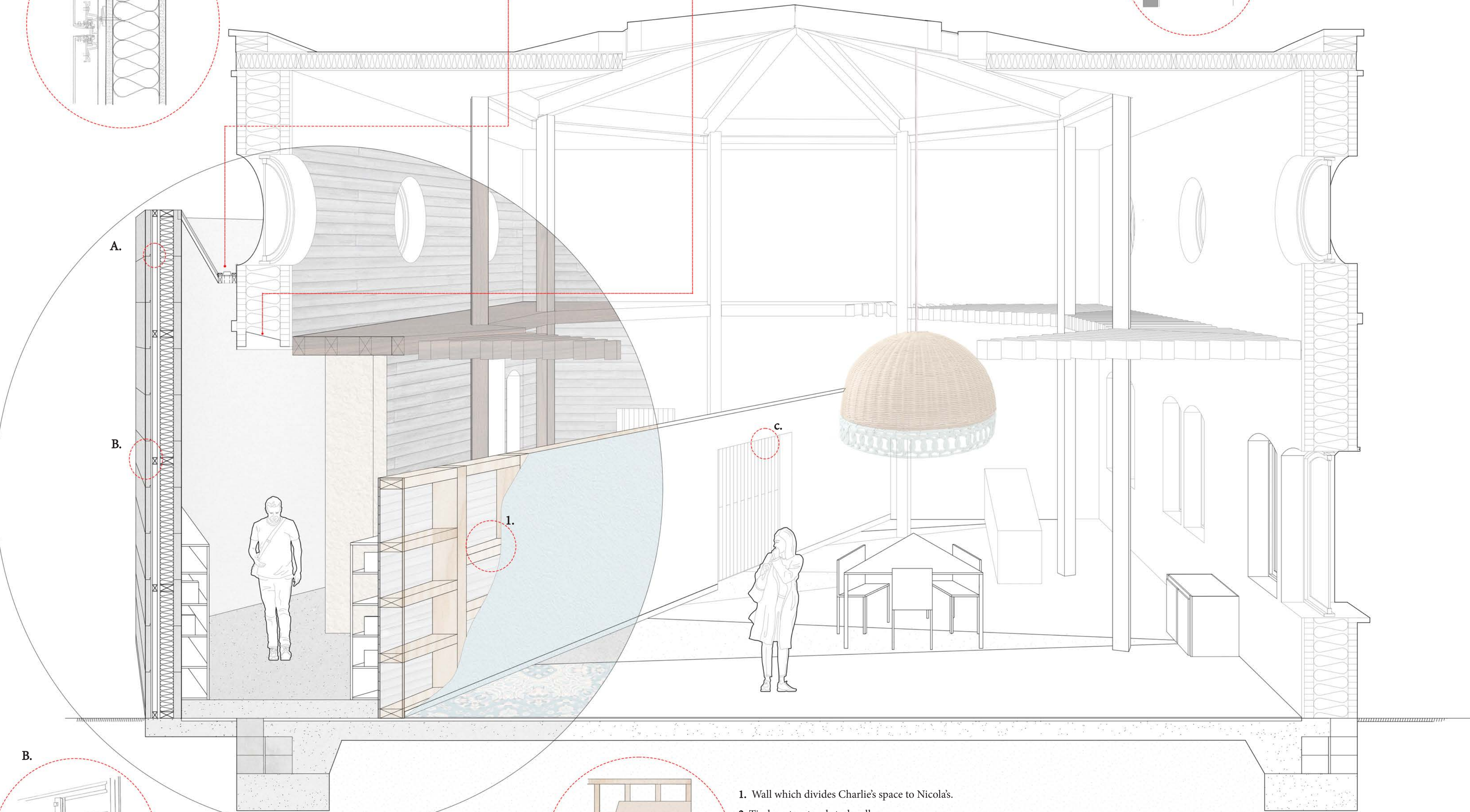


A. Joint detail - showing how the stainless steel cladding connects to the exterior of the building.

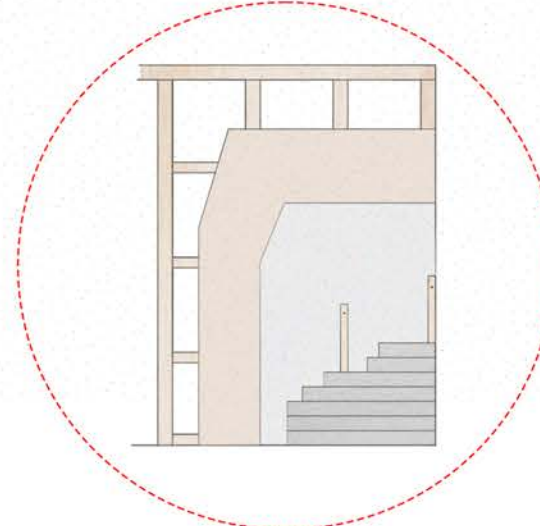
Gutter system which allows for the water to run off the roof easily.



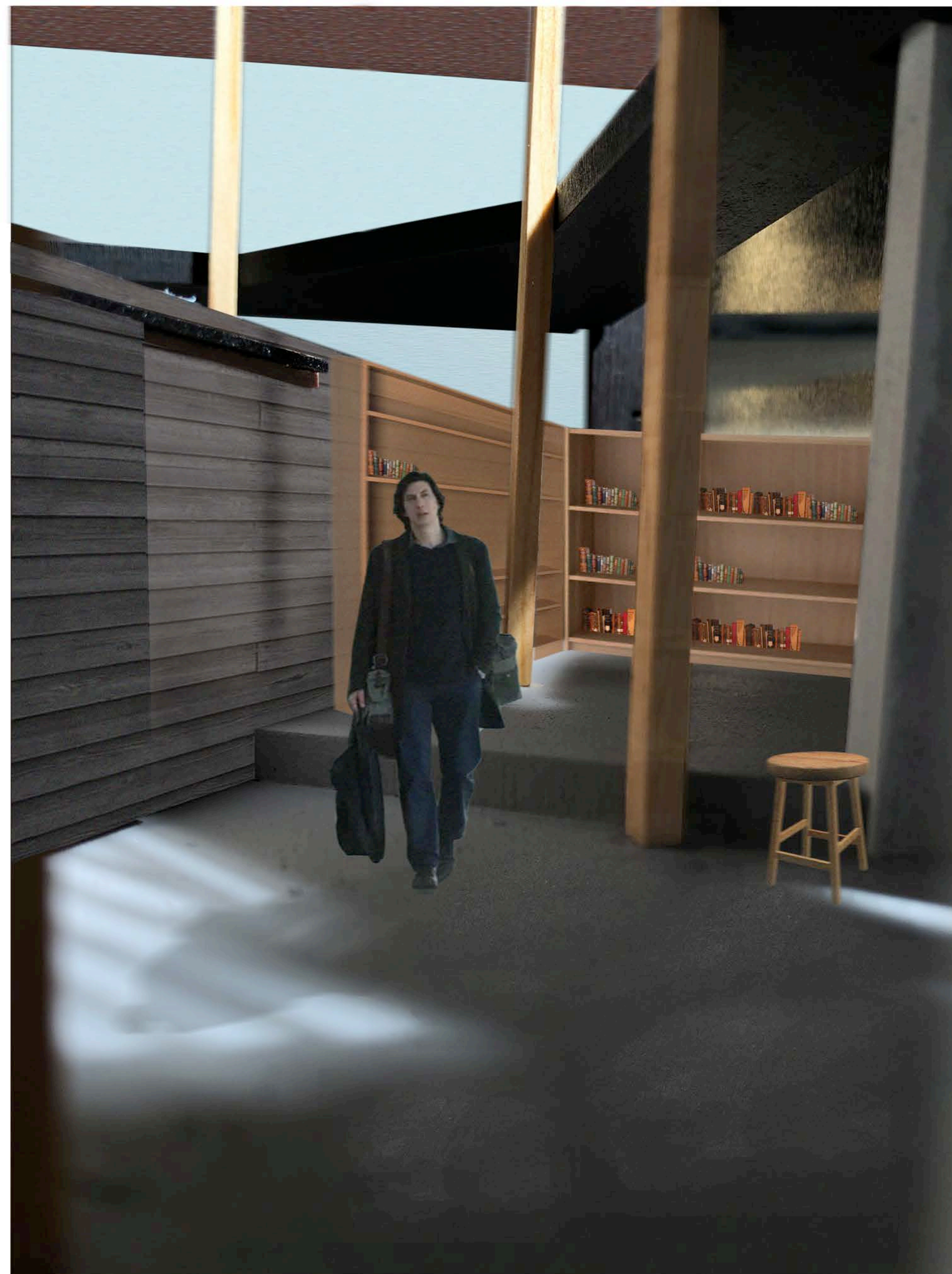
C. Detail showing how the weathered larch door slides.



B. How the stainless steel cladding connects.



- 1. Wall which divides Charlie's space to Nicola's.
- 2. Timber structural stud wall.
- 3. Fibreboard plywood.
- 4. Building paper.
- 5. Furring strips.
- 6. Cladding.



CHARLIE'S SPACE

Charlie has his own separate living space to Nicola and his son Henry. His space is dark and dull to represent his emotional state during their divorce.

