

# URBAN APPENDAGE

## MICROINDUSTRY IN NEWHAVEN

located in a so called 'forgotten' or 'falling' town, the project recognises that it may not be in need of a forceful 'regeneration', but more of an innovative bottom-up approach to help the town gain more life, culture, community.



the multifaceted experience of a wheelchair user and/or a skateboarder is often riddled with prejudice and restraint.

however, the ways in which both communities experience the urban realm repeatedly proves to break out of social norms. as true experts of the built environment - negotiating it at every pot hole, curb, stair or slope - these so-called 'unruly' people with 'unruly' bodies begin to unravel alternative ways of looking at the design of public spaces.

instead of designing the ordinary, for the ordinary and instead, valuing the rich diversity of these perceived 'problematic' communities, we steer away from limiting building regulations, rules, binary categorisation and assumptions.

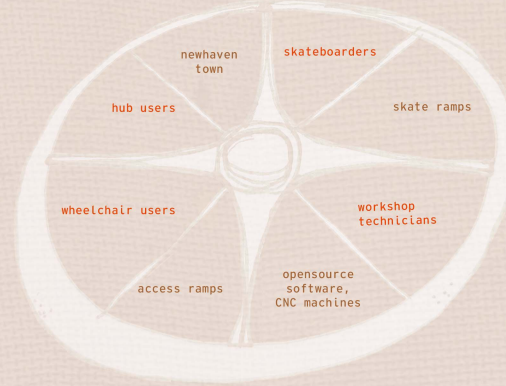
urban appendage aims to create somewhat rebellious wooden appendages for the street furniture and terrain of newhaven to assist in the defiance of 'ordinary' everyday activity.

## 'appendage'

... in the context of the project, [appendage] will be referring to a wooden structure made by and for wheeled vehicle users (wheel chairs and skateboards in particular)

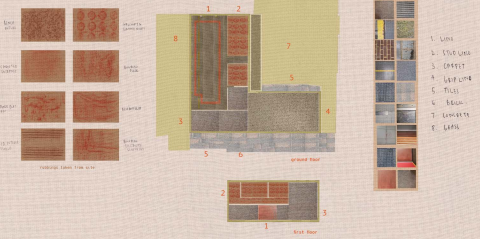
... the appendage has just as much importance/functionality as the original terrain or street furniture.

the non-hierarchical essence of the microindustry itself translates into the level ground in which urban appendage views the people that use and run its services. we attempt to encourage locals to be active changemakers.

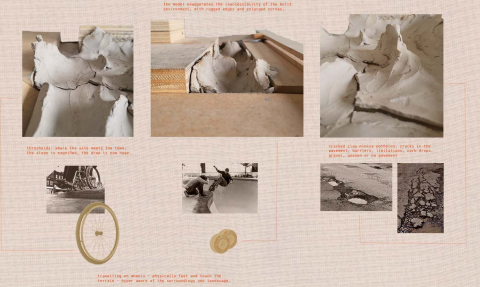


## EXISTING PLAN OF NEWHAVEN'S DELIVERY OFFICE, ROYAL MAIL

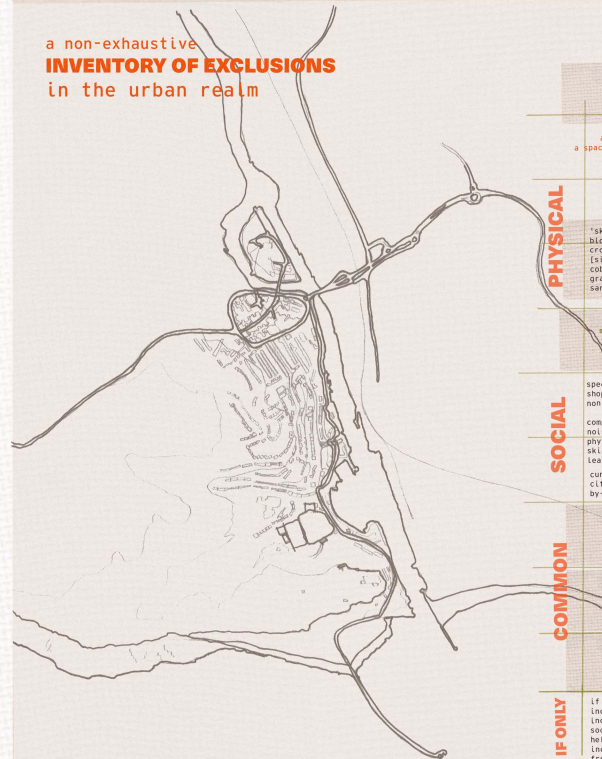
### SURFACES, MATERIALS, TOUCH



### DESIGN PROCESS MODEL EXAGGERATED CLAY



## a non-exhaustive INVENTORY OF EXCLUSIONS in the urban realm



	SKATEBOARDERS	WHEELCHAIR USERS
	accessibility for skaters refers to the location of a space, how easy it is to get to and whether it is well known". -Mottley and Johns, 2001	accessibility for wheelchair users can be synonymous with independence, "being able to continue with daily life without having to ask strangers for help or spend extra money... not having to think about it", just being yourself. -eleanor, london [the guardian, 2017]
PHYSICAL	'skate haters' - spikes and bumps added to handrails, blocks of concrete placed at the foot of banks, chains a cross ditches and steps... [simultaneously affects the homeless population] cobbled pavements gravel sand	narrow shop entrances scaffolding on both sides of the street inaccessible public transport uneven pavements damaged curb cuts ceramic tiles (when wet) sandwich boards on pavements vans/bins parked over lowered pavement edges potholes when crossing road gravel
SOCIAL	skateable urban elements specifically employed security guards shop keepers non participants complaints that contribute to exclusion: noisy, obstructive, dangerous physically 'scarring' surfaces skid marks, left deck paint, stripped paint off leaving imprints on the city curfews city ordinances by-laws banning skating in certain areas	curbs stairs ramps cutters hand rails walls prejudice thoughtlessness harmful stereotypes language used stigma
COMMON	intentionally excluded	"outcasts" (un)intentionally excluded
IF ONLY	balance movement strength (in the upper body) WCX (wheelchair motorcross) a performance of the body through space intentional thinking ahead defying social norms restricted	disability dance
	if the urban realm was inclusive of skaters: increased health, fitness inclusivity of young people social benefits, creating a community of sharing, helping one another, co-operation increase confidence free urban activity	if the urban realm was inclusive of chair users: wider variety of voices in decision making larger population in education, employment, voting makes spaces more useable for everyone... (gran pushers, cyclists, those with limited mobility)







# [DESIGN APPROACH: FROM THE EXISTING]

## PLAYING WITH THE EXISTING FACADE

### BEYOND THE FACADE COLLAGE



one of the most noticeable things on the facade: the sign demanding 'no skateboarding'.

upon entering the delivery office, it feels as though you are being transported to a different world. the courtyard feels like a secret hub where deliveries come in and out and nobody from the high street knows about all the magic happening out back.

before even entering the site, skaters are excluded from the high street

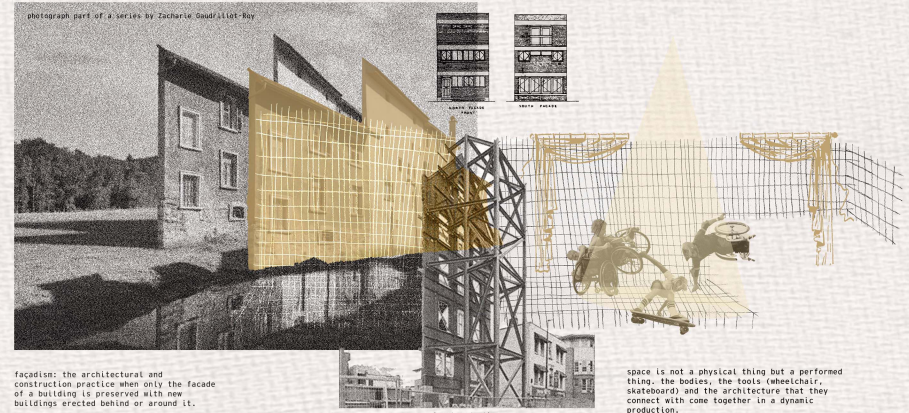
the collage aims to represent this feeling

### EXISTING SECTION



### FACADISM: THE STAGE

photograph part of a series by Zacharie Guad'Allet-Roy



facadism: the architectural and construction practice when only the facade of a building is preserved with new buildings erected behind or around it.

creating an illusion of something that is ordinary... the high street remains unchanged as to not disrupt the routine of the town.

space is not a physical thing but a performed thing. the bodies, the tools (wheelchair, skateboard) and the architecture that they connect with come together in a dynamic production.

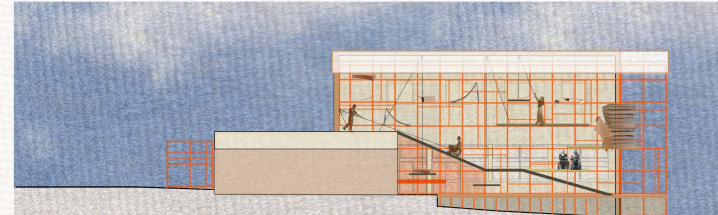
these communities are experts at this production - navigating the urban realm on a day to day basis and carving through the streets of newhaven and beyond.

### BUSINESS AS USUAL



existing facade, remains unchanged  
orange timber scaffold set back from the high street

### BEYOND THE FACADE



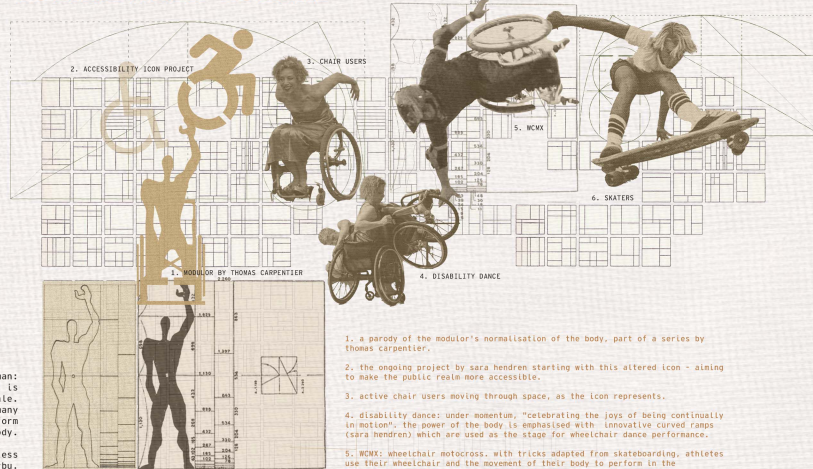
polycarbonate - timber roof  
supporting timber structure  
orange timber scaffold 'hive' structure  
ramp with pulley for wheelchairs  
three platforms with pulley mechanisms to reach supplies and stored appendages  
new flooring to provide a level ground  
salvage area/bench under ramp - extending into workshop



# CRITIQUE AND ADAPT

## THE HIVE

### TOWARD A NEW 'NORMAL'



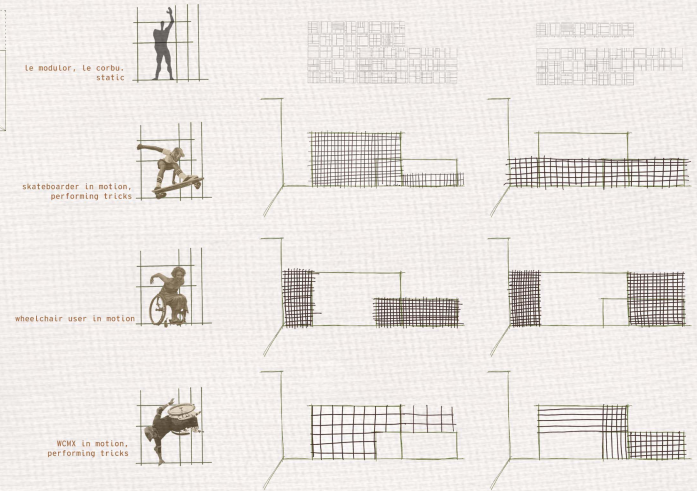
The modular man: this one size fits all approach to the built environment is critiqued for its standardisation of the healthy, white male, the normative, ableist and gendered way in which many modernist architects used this so called standard human form disregards the great diversity of the human body.

The 'panel play' illustrations represent a limitless combination of the modular scale used by le corbusier.

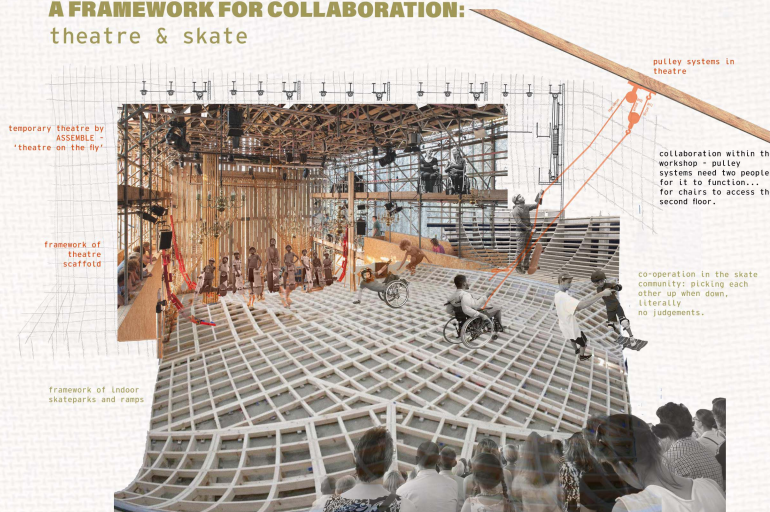
MODULOR BY LE CORBUSIER

1. a parody of the modular's normalisation of the body, part of a series by thomas carpenter.
2. the ongoing project by sara hendren starting with this altered icon - aiming to make the public realm more accessible.
3. active chair users moving through space, as the icon represents.
4. disability dance: under momentum, "celebrating the joys of being continually in motion", the power of the body is emphasised with innovative curved ramps (sara hendren) which are used as the stage for wheelchair dance performance.
5. WCMX: wheelchair motorsport, with tricks adapted from skateboarding, athletes use their wheelchair and the movement of their body to perform in the skatepark.
6. skateboarders create their own spaces through the body, movement, their board and the terrain they act upon - claiming the urban realm.

### SCAFFOLD HIVE SKETCHES



### A FRAMEWORK FOR COLLABORATION: theatre & skate



temporary theatre by ASSEMBLE - 'theatre on the fly'

framework of theatre scaffold

framework of indoor skateparks and ramps

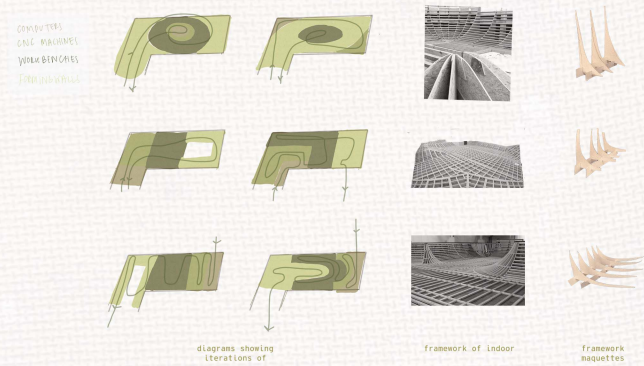
pulley systems in theatre

collaboration within the workshop - pulley systems need two people for it to function... for chairs to access the second floor.

co-operation in the skate community: picking each other up when down, literally no judgements.

## THE WOOD WORKSHOP

### WORKSHOP BOUNDARIES AND FLOW



diagrams showing iterations of

framework of indoor

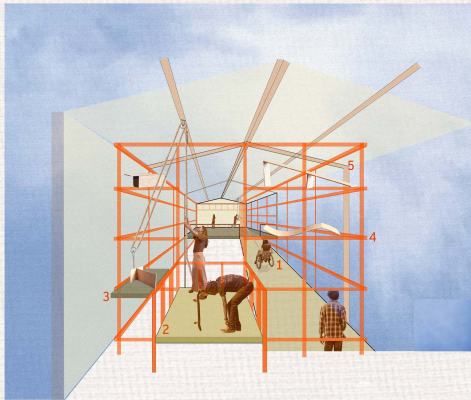
framework maquettes



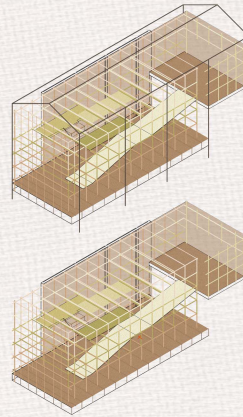
[FINAL DESIGN]

# HUB NORTH: URBAN APPENDAGE WORKSHOP

## THE SCAFFOLD HIVE

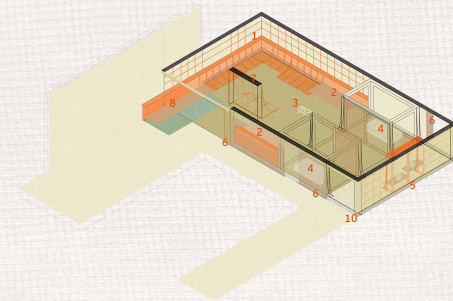


- 1 ramp with pulley
- 2 platform for users
- 3 small platform on pulley system
- 4 orange timber scaffold hive structure
- 5 supporting frame



AXONOMETRIC VIEW OF THE HIVE

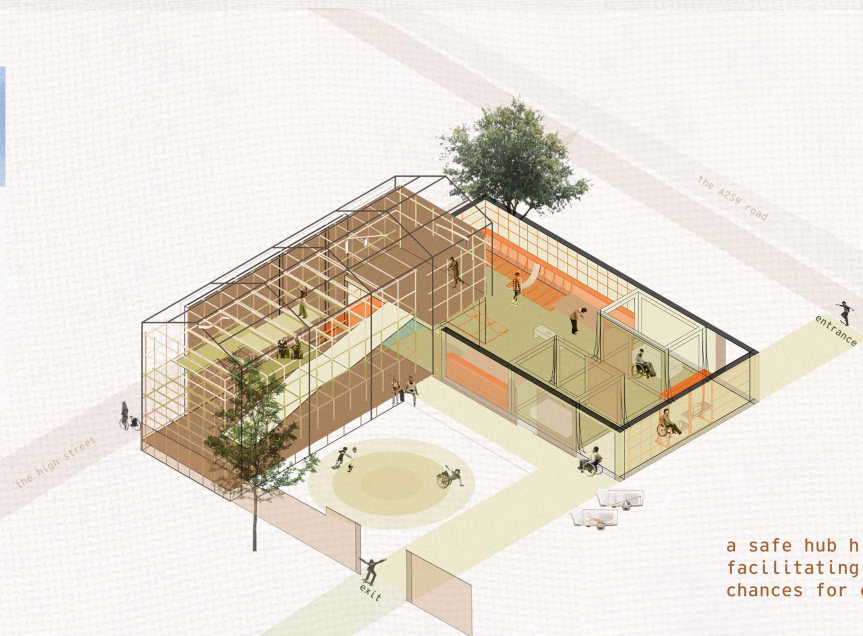
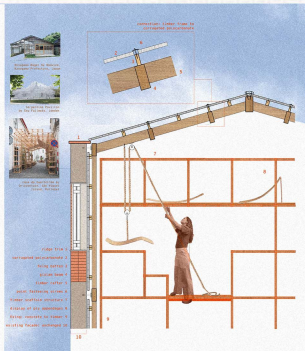
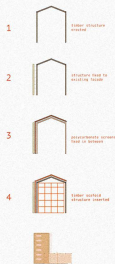
## THE WOODWORKSHOP



AXONOMETRIC VIEW OF THE WORKSHOP

- 1 curved walls - formers
- 2 adjustable workbenches
- 3 mitre saw
- 4 CNC machines in booths
- 5 adjustable computer desks
- 6 corrugated polycarbonate-timber sliding doors
- 7 structural wall doubling as a former
- 8 salvage bench
- 9 entrance
- 10 exit

## SCAFFOLD STRUCTURE SECTION



a safe hub hidden beyond the high street  
facilitating an innovative community and many  
chances for cooperation