

brief :

Re-activate the bus station by turning it into an urban trading hub, a public place of exchange and/ or interchange. The proposal should be a counterpoint to the current proposal which plans to demolish the building to make space for housing

objectives :

To promote cycling and Cycle Lewes' initiatives by establishing a bicycle hub in the heart of town and to support the organisation's plan for a low traffic Lewes.

To reinvent the Lewes bus station to accommodate the future mode of transport — bicycles.

It aims to be a place for amateur and experienced cyclists to meet, exchange stories, hold events, trade bicycle parts and share pictures taken on their biking trips.

To document the journeys of cyclists by sharing things they have heard or seen on their biking trips through pictures, talks and events. Their unique experience provides an insight into the lives of the people of Lewes and the towns surrounding it.

craft & making :

Various mediums are utilized to develop designs and produce final project visuals. Sketching and model maquettes play a crucial role in the development stages, enabling experimentation and better comprehension of the space. In the final stages, computer software is primarily employed to refine visuals, sections, and plans. Additionally, model making aids in visualizations during the final stage.

○ sketches □ maquettes ● c. software ■ model making

The bus station turned Bicycle Club

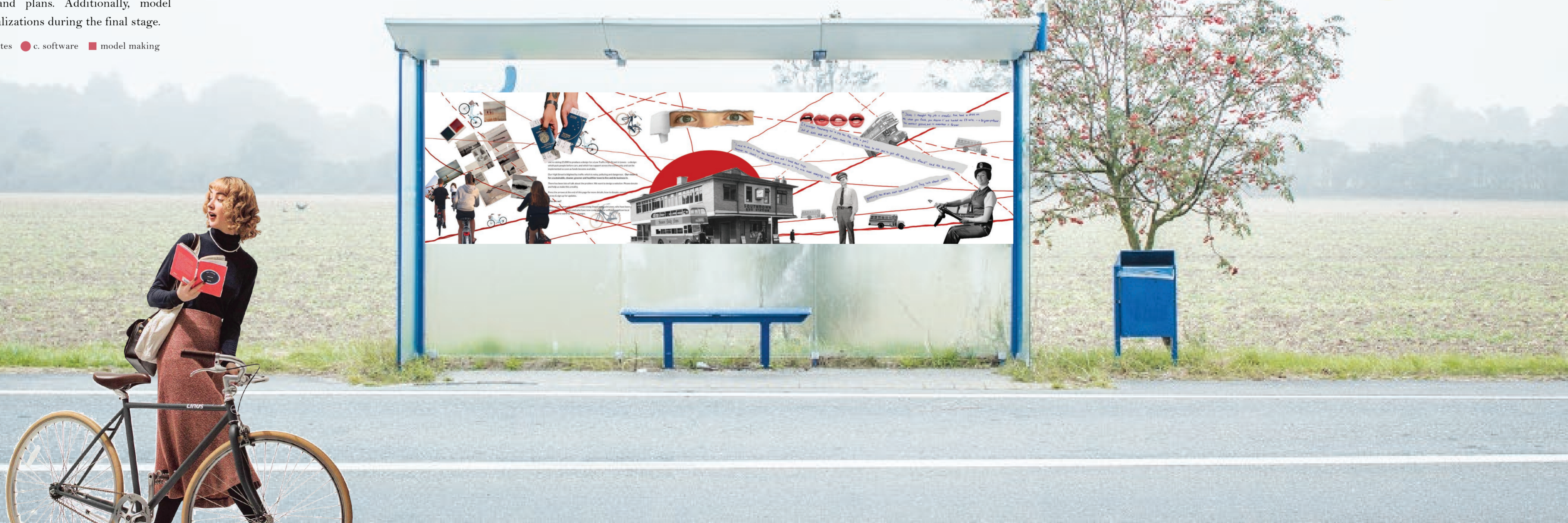
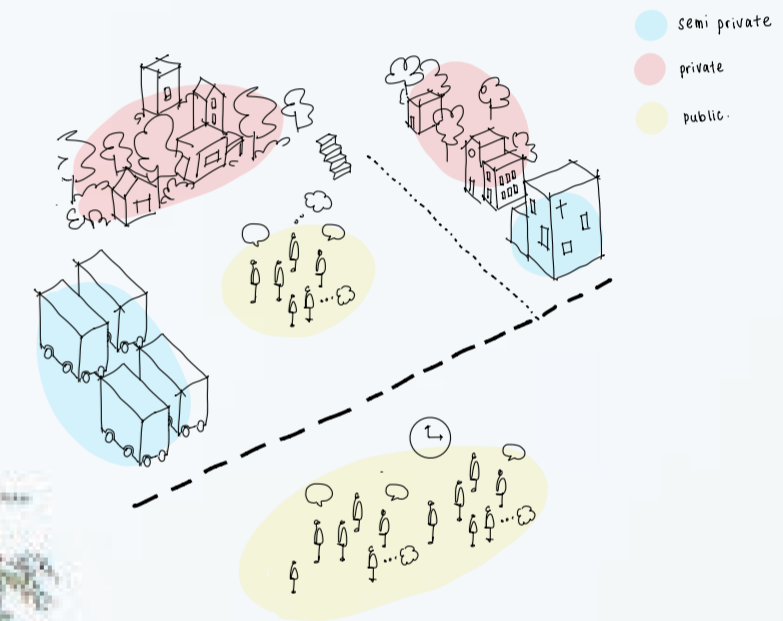
designed by yenyipan

■ public transport site analysis

The site is close to the railway station, bus stations, parking lots, and bike shops. There are a few bicycle lanes around the location, but not many, making this project necessary.



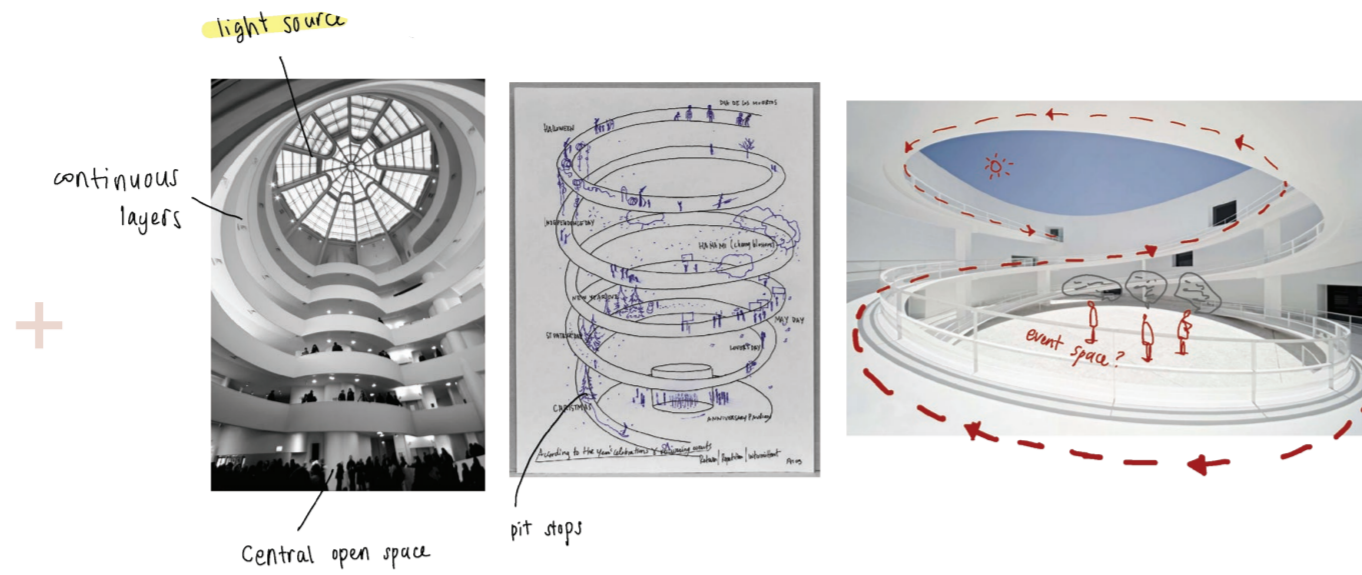
○ micro site analysis



Investigating Shape, Material and Spaces



Serpentine Gallery 2009 by SANAA

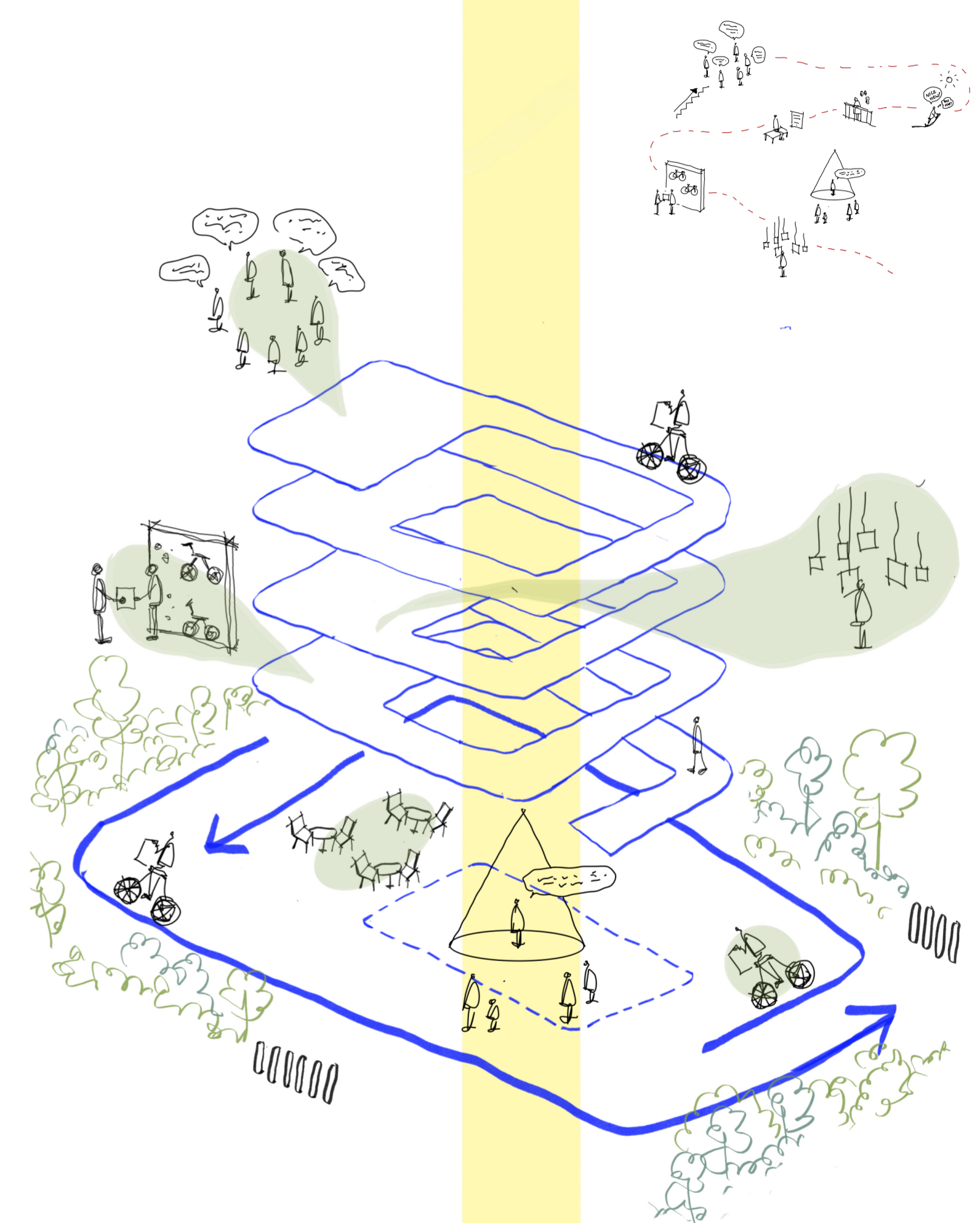
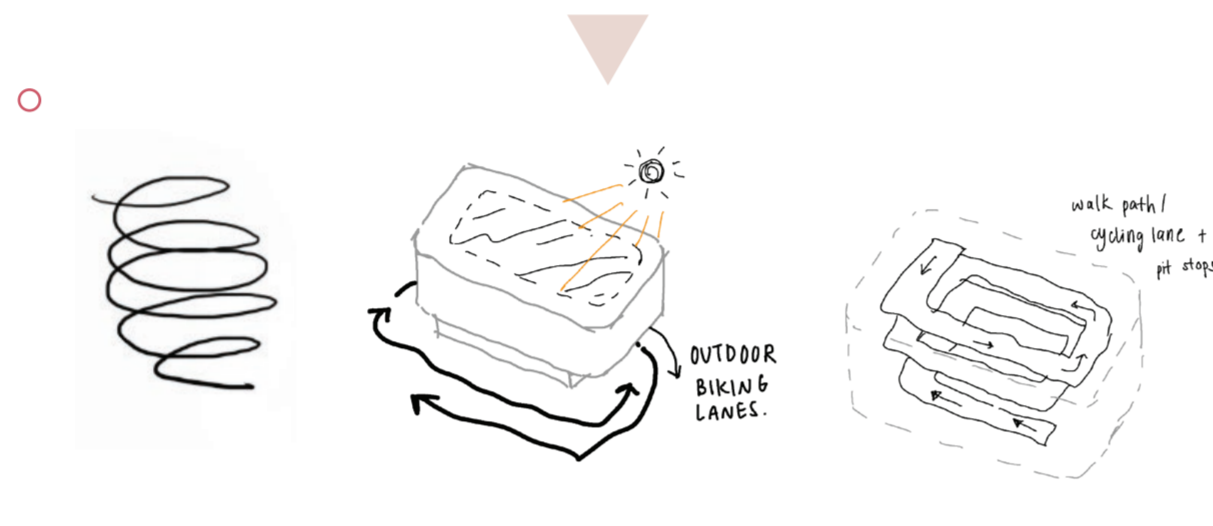
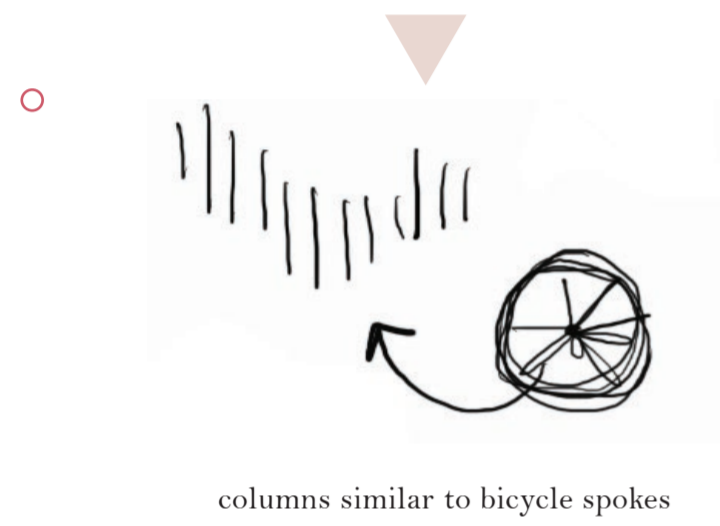


Guggenheim Museum by Frank Lloyd Wright

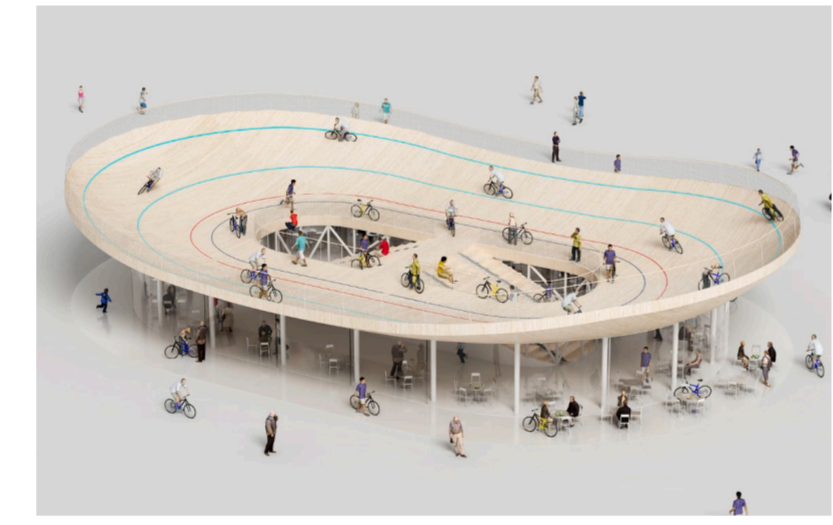
Andalucia's Museum of Memory by Alberto Campo Baeza

A journey through the space

To emulate the motion of cycling, a ramp going through the building whilst creating multiple levels for various purposes is proposed. The open ground outside of the building serves as a bicycle playground for new and experienced cyclists, ultimately creating a cyclist community.



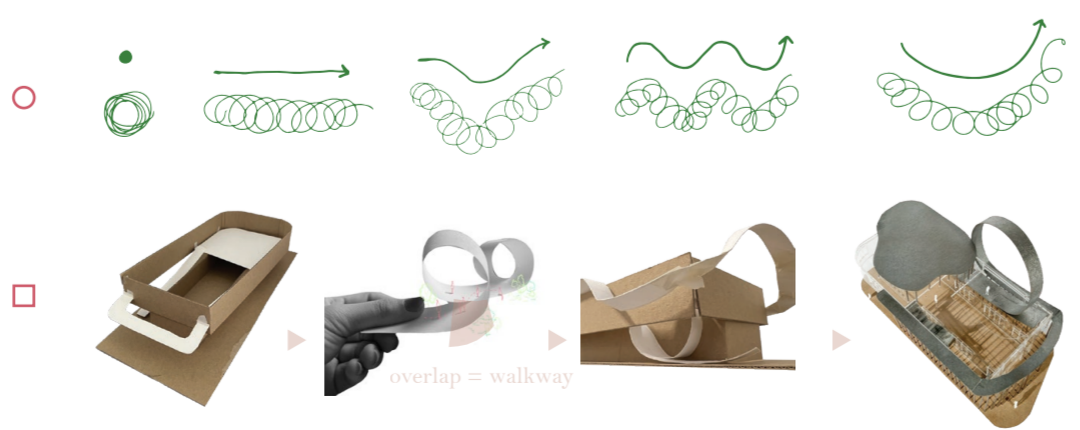
Rapha London Clubhouse



Bicycle Club by NL Architects

the motion of pedalling

The architectural form is inspired by the motion of pedalling. This is the process of exploring the form by creating loops and using the overlap between them as a walkway yet keeping its dynamic shape



USER DEMOGRAPHIC

- CYCLISTS - young & old
- NEW CYCLISTS - an organization to partner with

ACTIVITIES

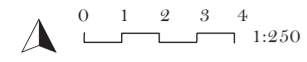
- EXCHANGE BIKING EQUIPMENTS
- TELLING STORIES
- DONATION - PETITION - HELP CYCLE LEWIS CASE
- SPACE TO CONVERSE
- LEARN / PRACTICE CYCLING

SPACES

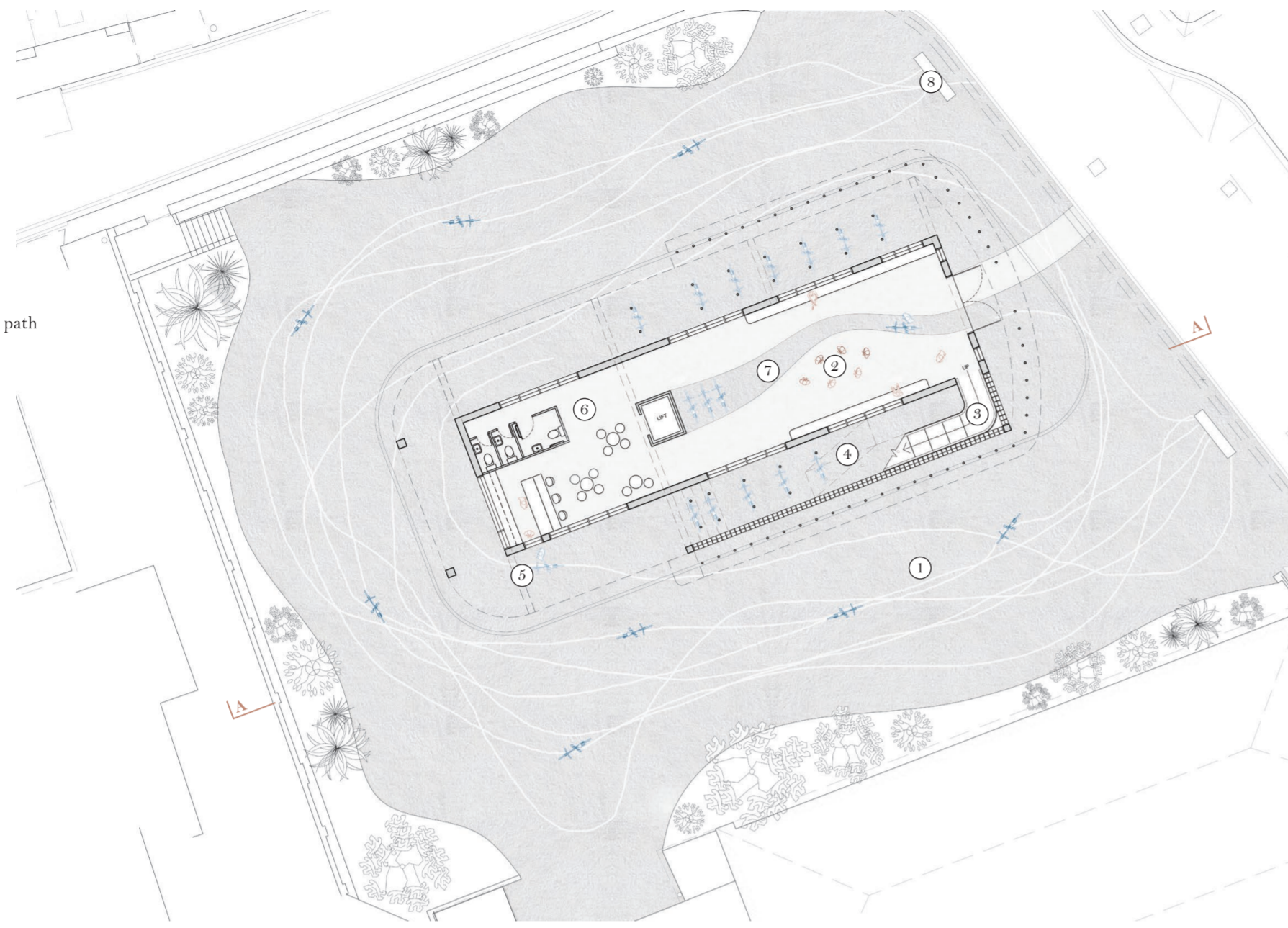
- PUBLIC EVENT SPACE
- GALLERY - cyclists films
- PARKING for bicycles
- CAFE - refreshments
- PRIVATE EVENT SPACE
- OPEN GROUND to learn cycling
- TRADING & WORKSHOP SPACE



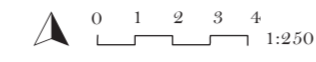
● **ground floor**



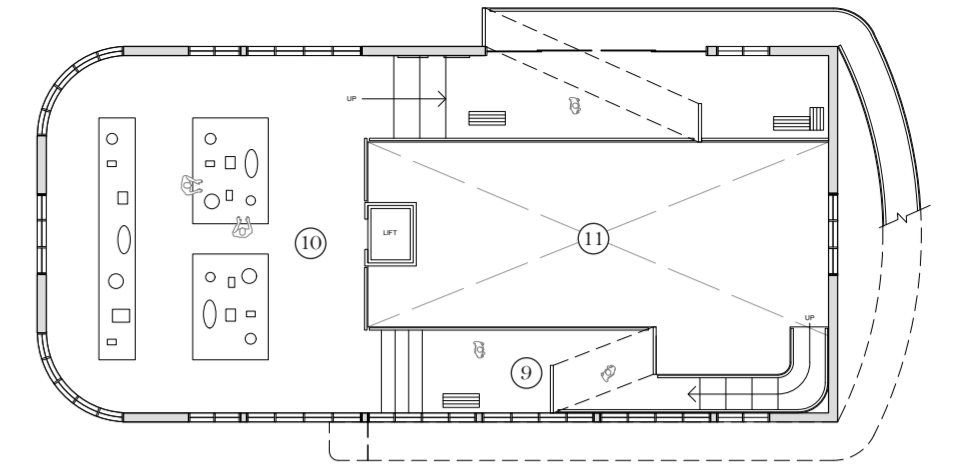
- ① cycling playground
- ② public event space ⇌ cafe seating
- ③ perforated metal ramp
- ④ bicycle hanging storage
- ⑤ cafe cycle through
- ⑥ cafe
- ⑦ rough concrete as designated bike path
- ⑧ paint pit to leave bike tyre tracks
- bicycle traffic ● foot traffic



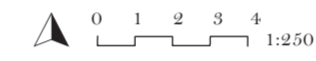
● **first floor**



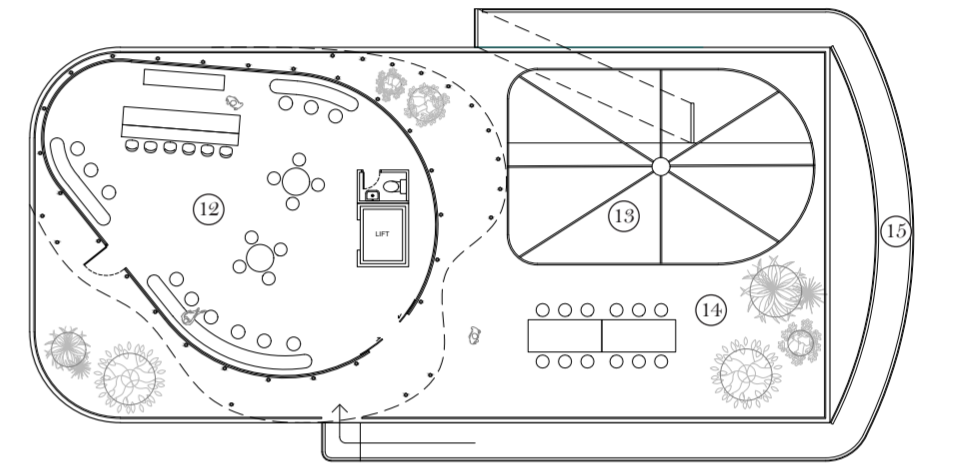
- ⑨ ramp + gallery of pictures collected from biking trips
- ⑩ trading and workshop space
- ⑪ void to increase sunlight



● **second floor**



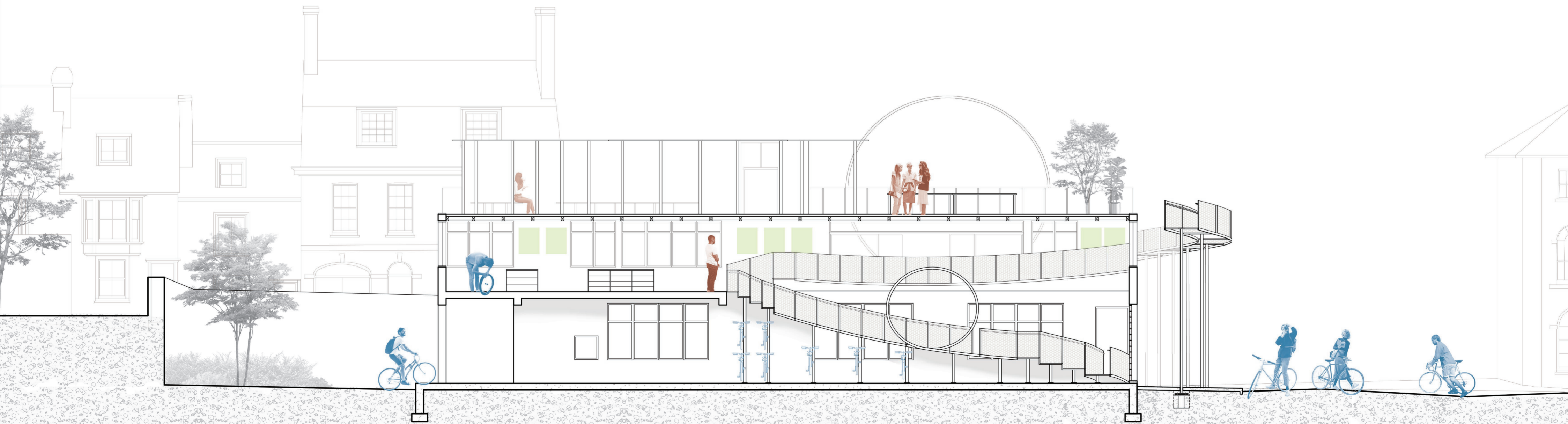
- ⑫ private event space
- ⑬ skylight
- ⑭ outdoor rooftop garden
- ⑮ observation deck



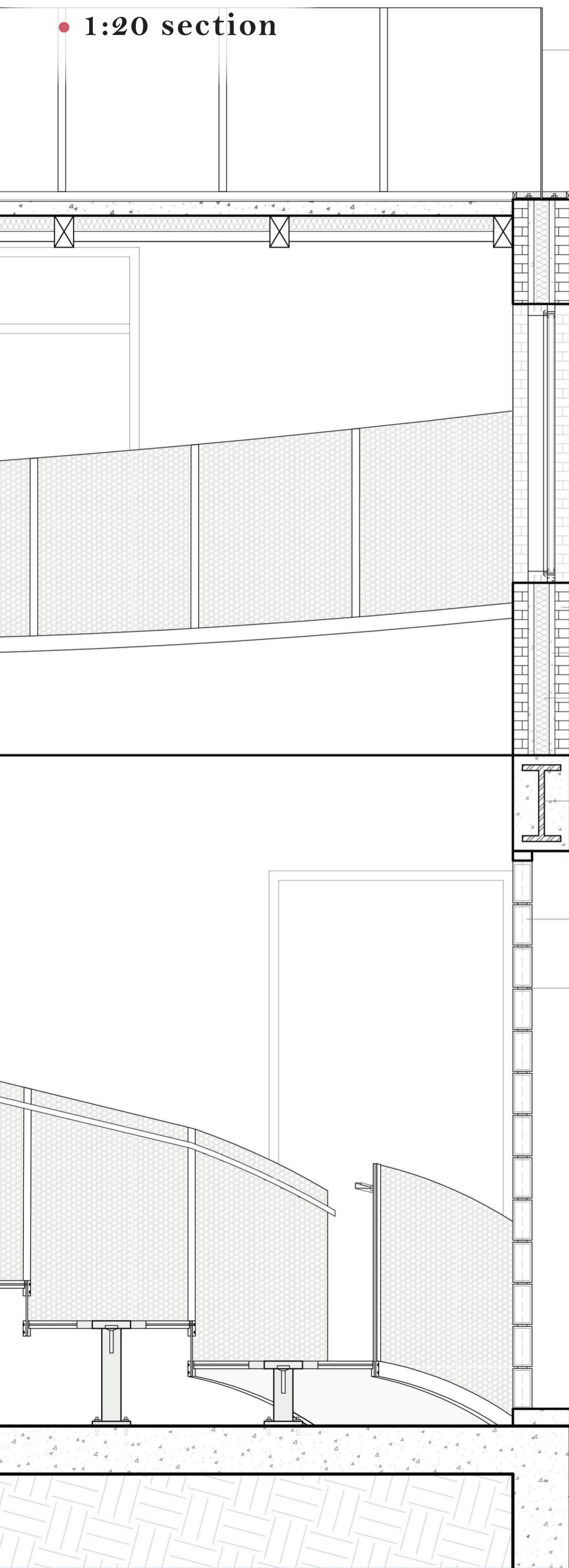
● **section AA'**



- bicycle traffic ● foot traffic



• 1:20 section



8mm solid steel panel c/w anti corrosive paint finish

8mm perforated steel panel c/w anti corrosive paint finish

aluminum structure c/w anti corrosive paint finish

Ø150mm steel capital

Ø100mm steel columns c/w anti corrosive paint finish

80mm brick work

cement

100mm solid thermal insulation

rolled steel joist I beam in concrete

190 x 190 x 80 mm glass bricks

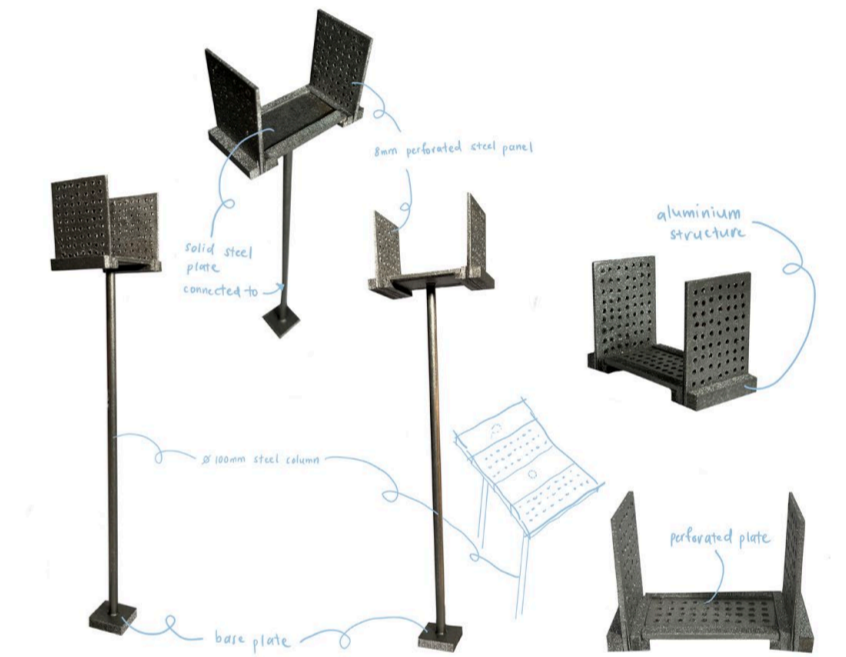
mortar and silicon as sealant

new concrete pavement

base plate 500 x 500 x 50 mm

screw pile

concrete mass



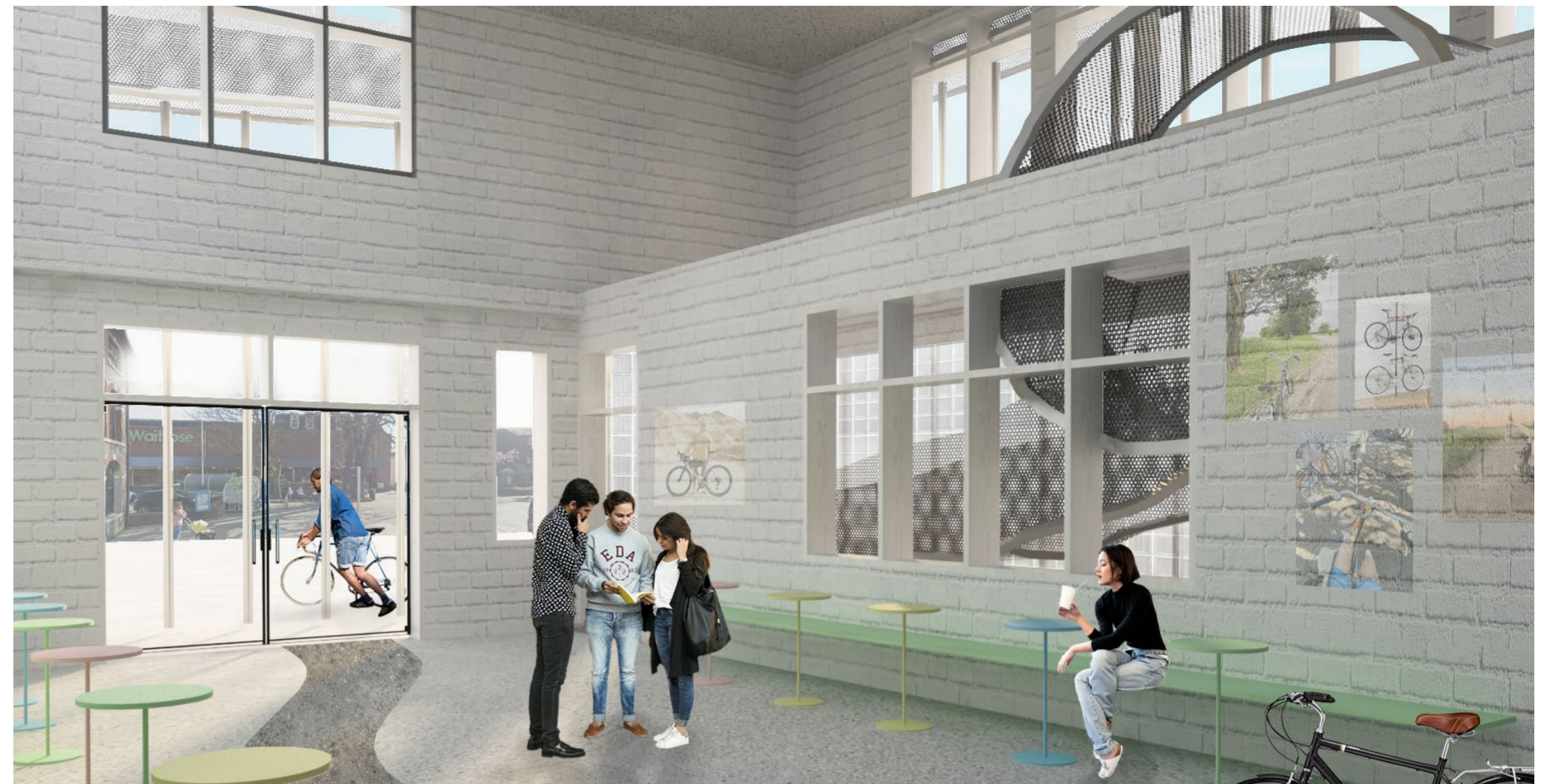
■ exploring construction of the ramp through 1:20 maquette





Cycling Playground | outdoor

The open space serves as a cycling playground for both amateur and experienced cyclists, with a paint pit at the entrance creating tyre tracks to signify its purpose as a cyclists' hub even when bicycles are absent. There is also a cafe cycle thru where one can pick up coffee.



Public Event Space | ground floor

The space features rough and polished concrete, separating pathways for foot and cycle traffic. When not in use as a public event space, it doubles as café seating.



Ramp + Gallery | through the floors

The ramp doubles as a gallery, showcasing pictures of cyclists' journeys. Visiting cyclists are also welcome to contribute to the photo wall at their leisure. On the first floor, bicycle parts are displayed on a table for trading and exchanging. While the ramp is not intended for cycling due to safety concerns, cyclists are welcome to push their bikes up to the trading and workshop space.



Private Event Space | second floor

Leading to the second floor is the observation deck with fantastic views of Lewes and the canal. On the second floor is a rooftop garden and a private event space with flexible seating and a bar. Its architectural shape is heavily influenced by the Serpentine Gallery Pavillion 2009.

