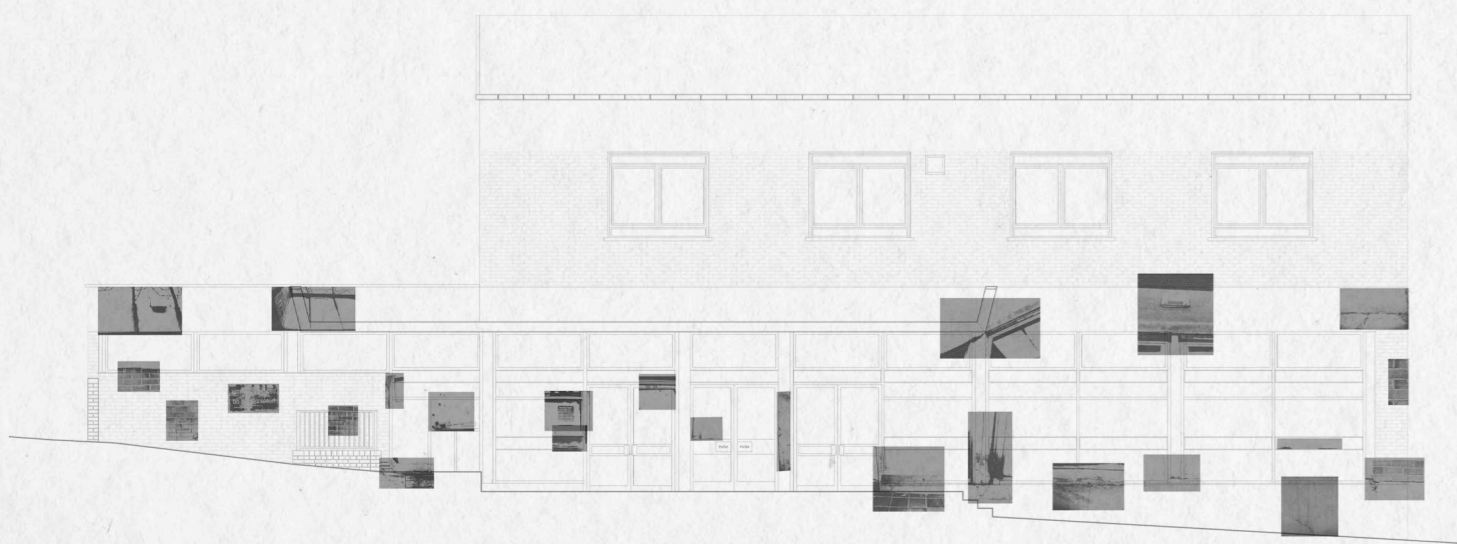


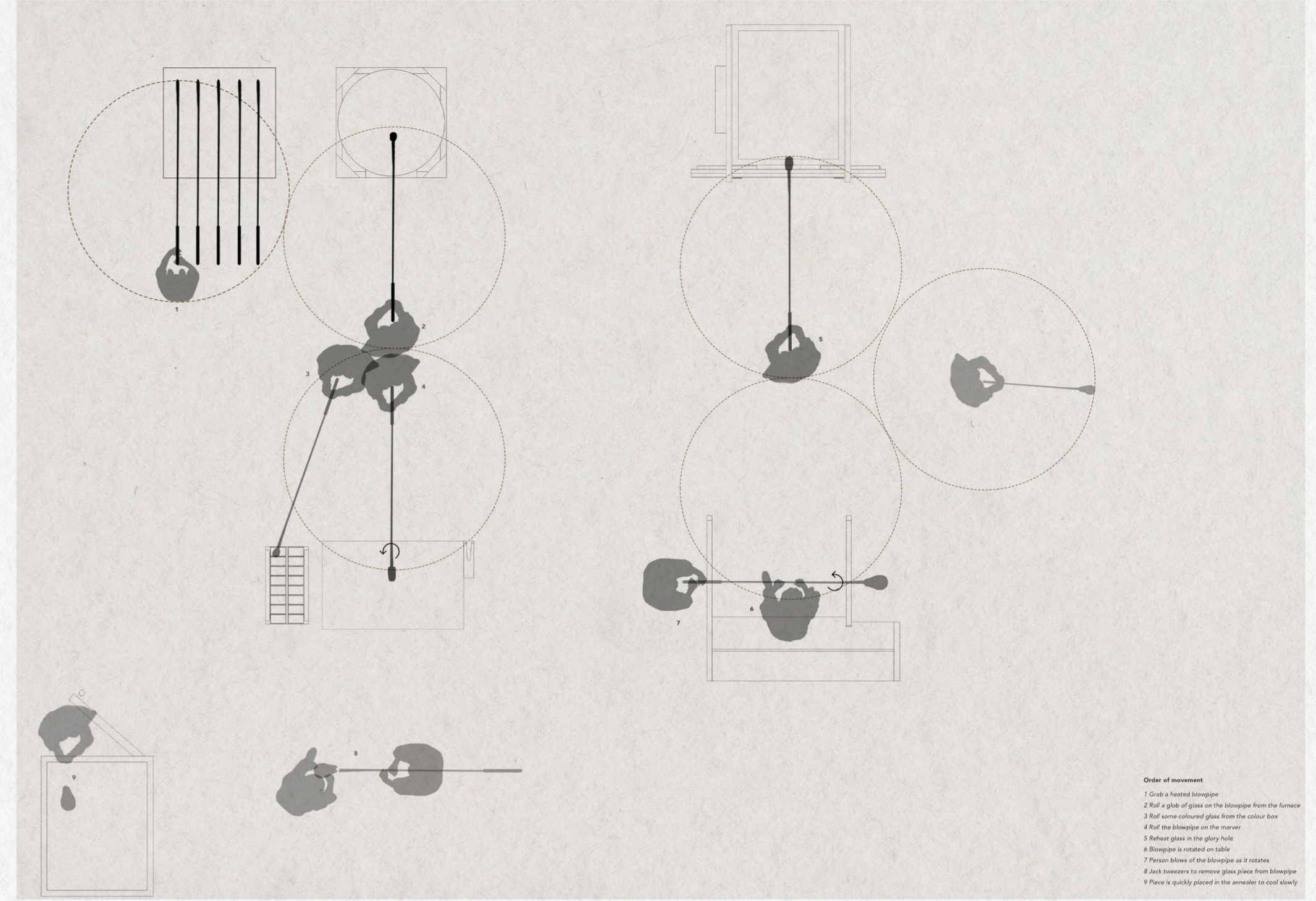
THE COMMUNITY
THE SITE AND COMMUNITY BEHIND IT



Collage showing the facade of the site highlighting the level change and front boundary.

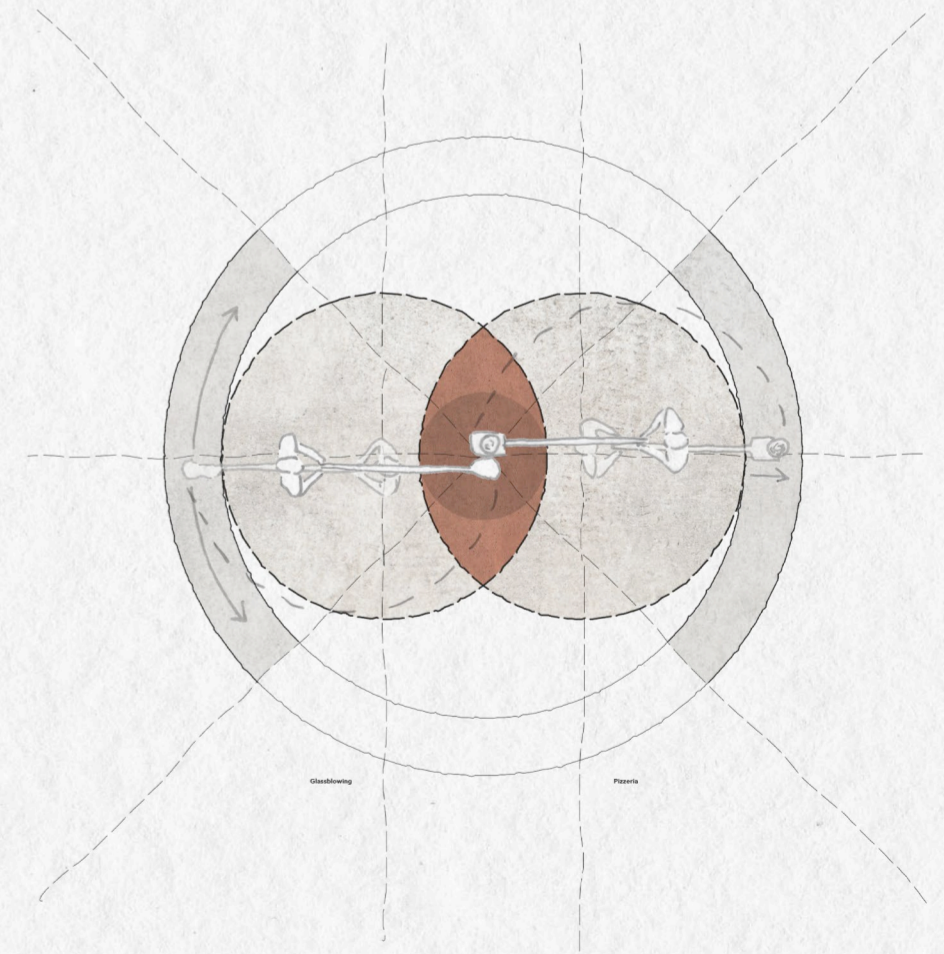
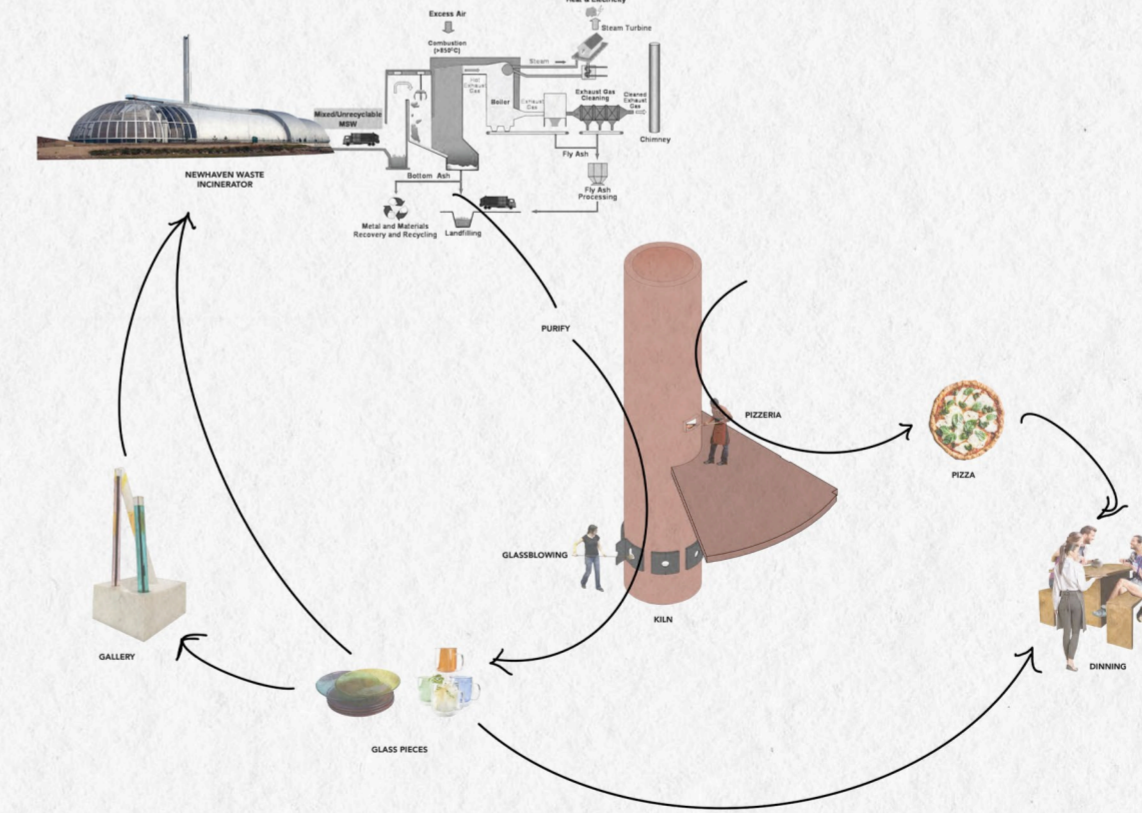


GLASS BLOWING PROCESS DRAWING
EVOLVING CIRCLE BOUNDARIES

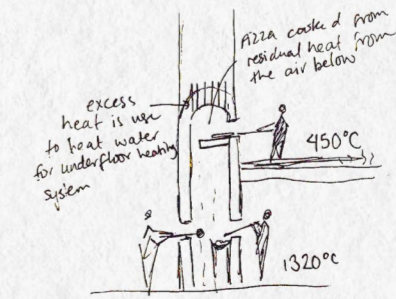


- Order of movement**
- 1 Grab a heated blowpipe
 - 2 Roll a globe of glass on the blowpipe from the furnace
 - 3 Roll some coloured glass from the colour box
 - 4 Roll the blowpipe on the marver
 - 5 Reheat glass in the glory hole
 - 6 Blowpipe is rotated on table
 - 7 Person blows of the blowpipe as it rotates
 - 8 Jack tweezers to remove glass piece from blowpipe
 - 9 Piece is quickly placed in the annealer to cool slowly

PROGRAMMES WORKFLOW

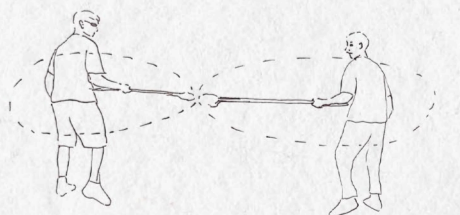


Newhaven, a town's community and high street overshadowed by the ring road around the town centre, is in need of programmes that contribute to the community by diversifying what Newhaven can offer and as well as invest in the people. In addition, the new scheme focuses on force recognition through disruption and replication so people can not only notice the programmes but the town. The hearth kiln placed at the core of the building, which is at the core of Newhaven, brings people together through the unusual interaction of a glassblowing studio and a pizzeria. This project aims to improve the dining and food experience in Newhaven as well as provide fun skill-based apprenticeship for the youth, whilst disrupting the rigid movement dictated by the ring road. Let us reconnect the community of Newhaven once again.



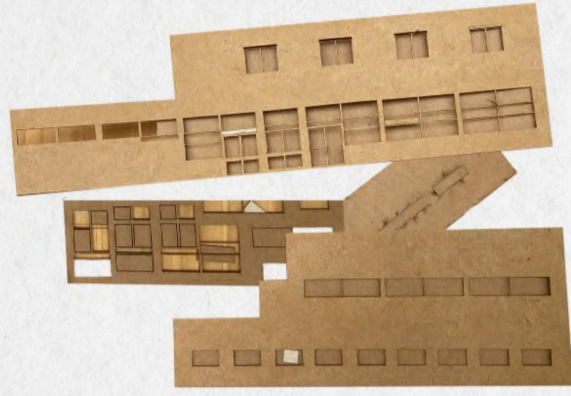
excess heat is used to heat water for underfloor heating system

PIZZA cooked from residual heat from the air below

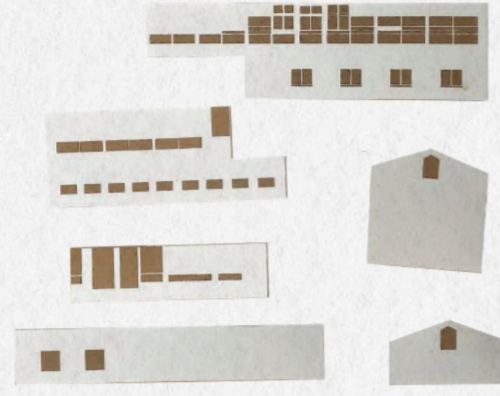


Upon discovering glassblowing and pizzeria, they began to show similarities in how both move with the boundaries of circles using a line. Therefore, the point where they meet is interesting in the way both can function within the same space.

BREAKING THE CYCLE
EXPLODING EXPLORATIONS



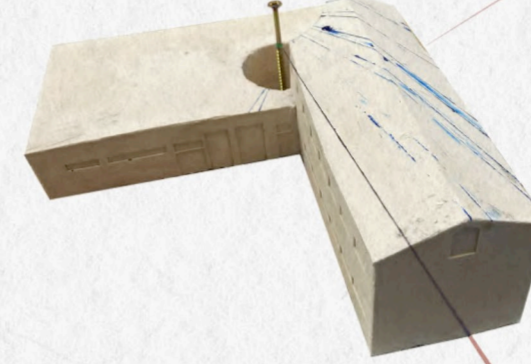
Lasercut of site model
Utilised for the plaster mold and
indents of openings



Cast mold



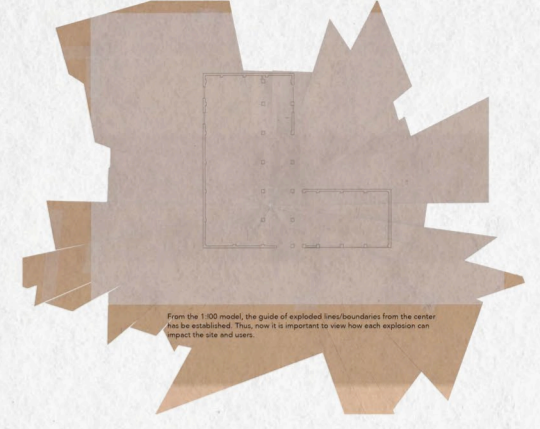
Plaster cast model
The hollow cylinder represents the kiln



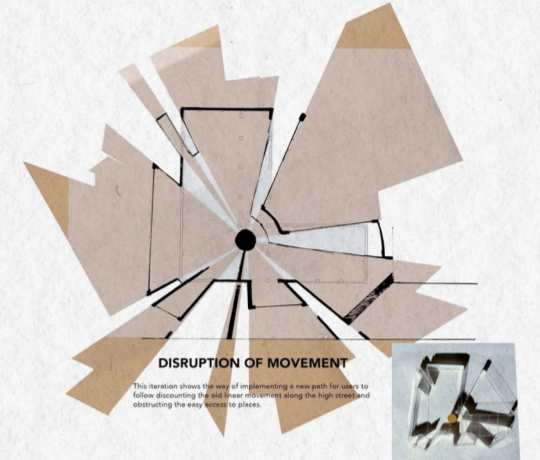
Radius cuts
The centre of the kiln was used to
project cuts that potentially serve as
views and boundaries

ITERATIONS OF EXPLODED VIEWS
MANIPULATING SPACE

Center on the center
Cut into the exploded and down
the center of the building
from the center of the
building, repeating the movement
of position and programmatic

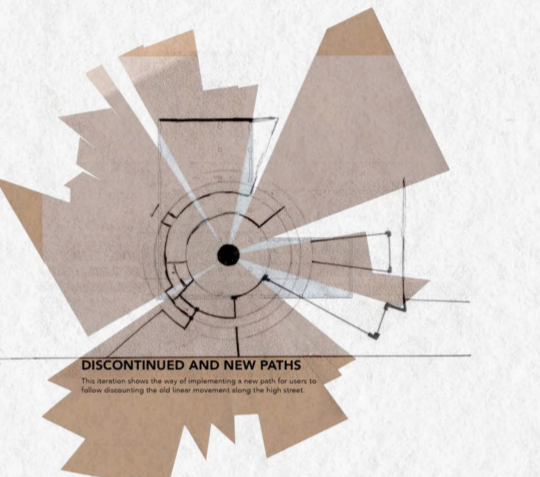
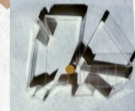


From the 1:50 model, the guide of exploded view boundaries from the center
of the building. This view is important to show how each separate unit
relates to the site and users.



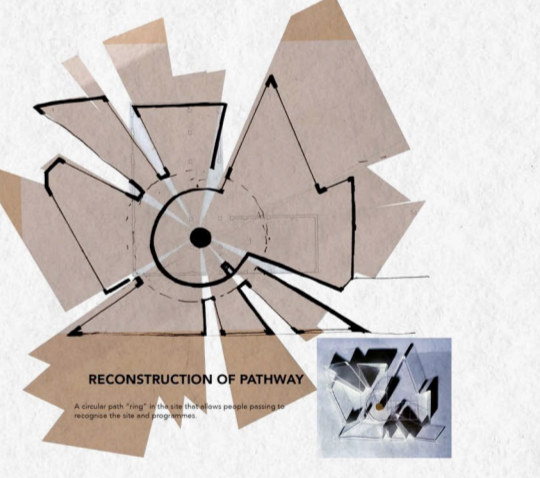
DISRUPTION OF MOVEMENT

This diagram shows the way of generating a new path for users to
follow, disrupting the old linear movement along the high street
introducing the new routes to places.



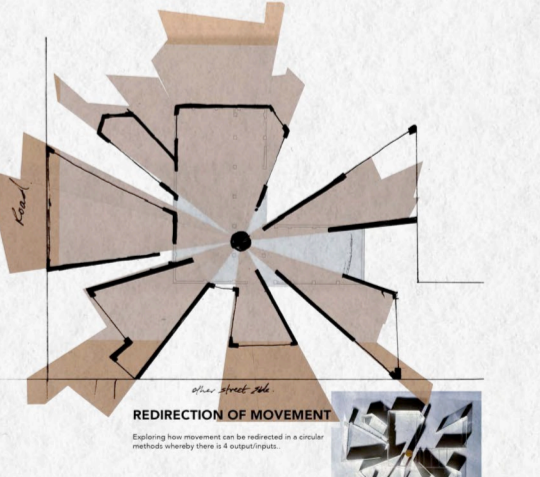
DISCONTINUED AND NEW PATHS

This diagram shows the way of generating a new path for users to
follow, disrupting the old linear movement along the high street
introducing the new routes to places.



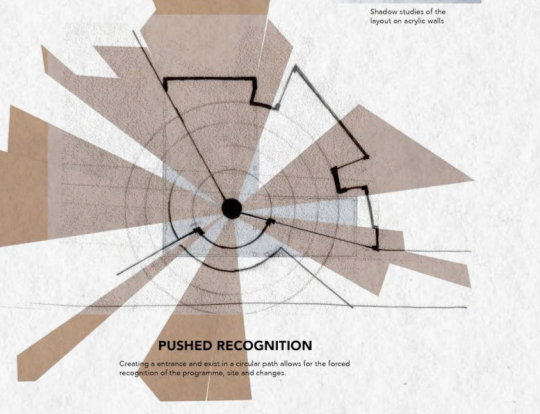
RECONSTRUCTION OF PATHWAY

An exploded view of the building showing the way of generating a new path for users to
follow, disrupting the old linear movement along the high street
introducing the new routes to places.



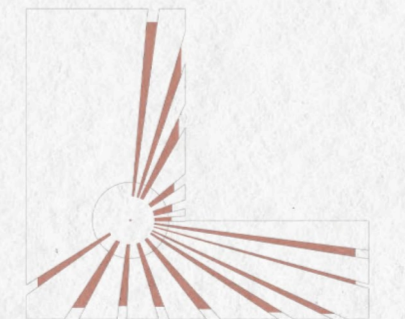
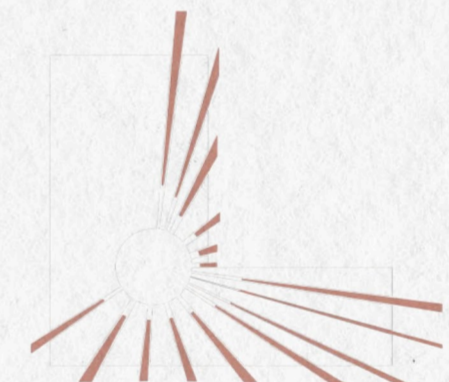
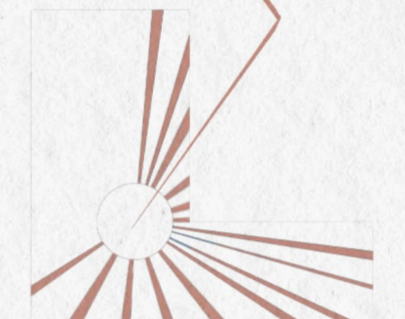
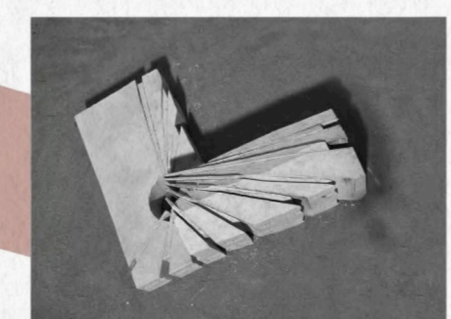
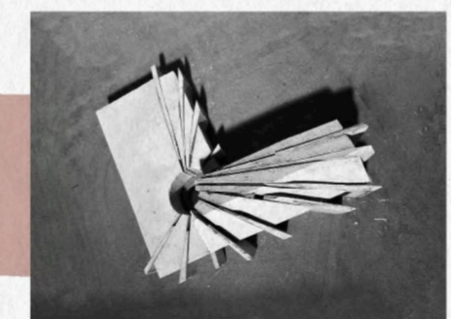
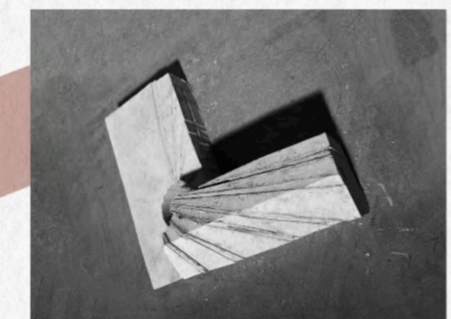
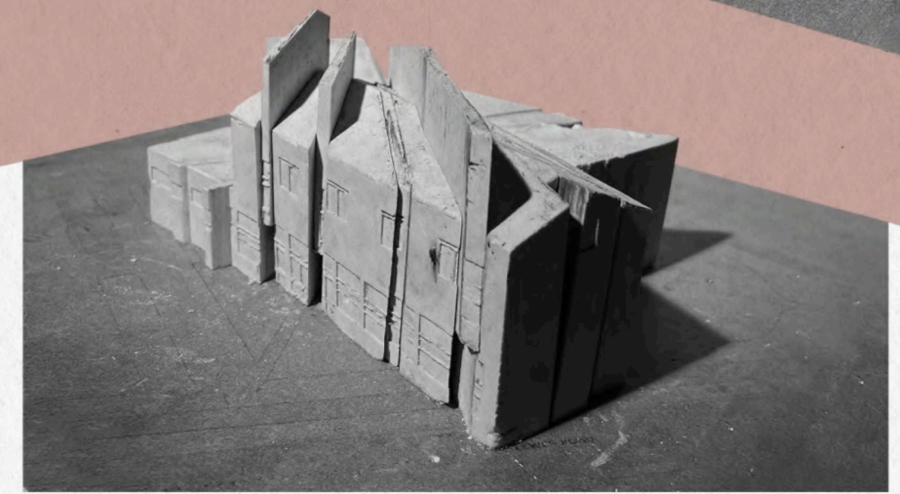
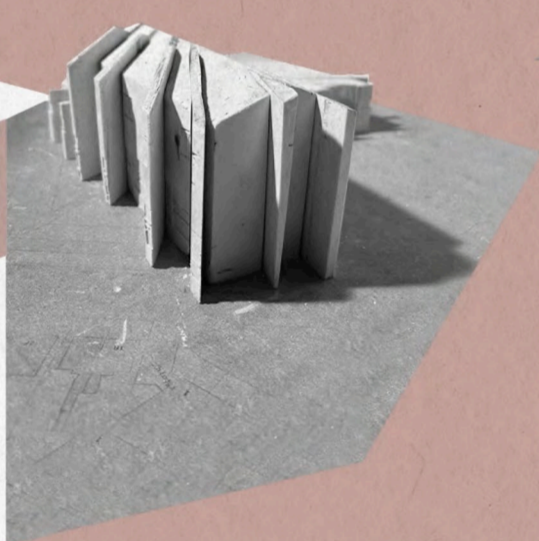
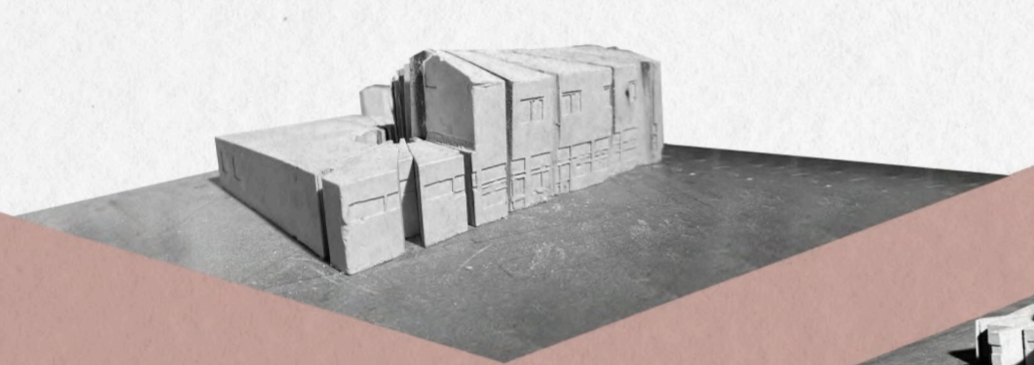
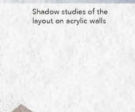
REDIRECTION OF MOVEMENT

Exploring how movement can be redirected in a circular
movement through spaces of unexpectedness.



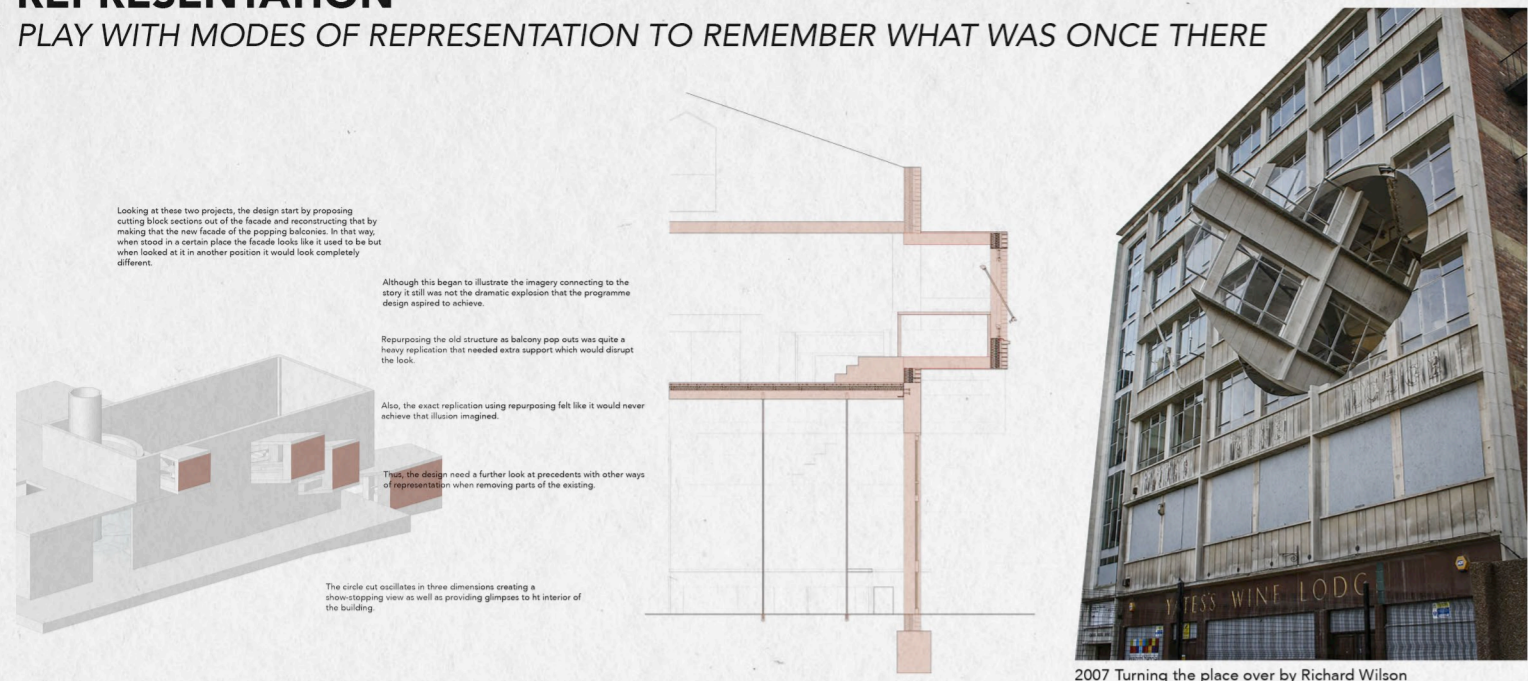
PUSHED RECOGNITION

Creating a sense of movement and direction in a circular path allows for the forced
recognition of the programmatic and changes.

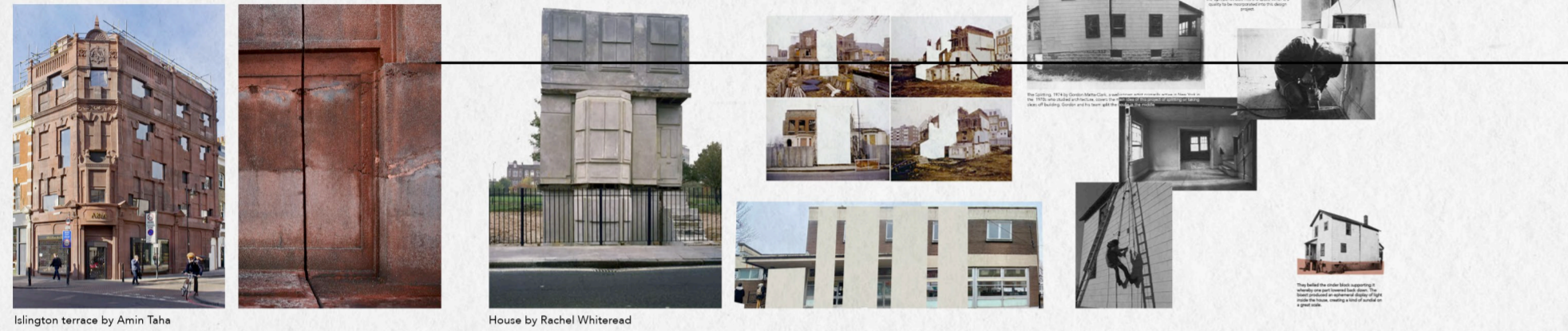


REPRESENTATION

PLAY WITH MODES OF REPRESENTATION TO REMEMBER WHAT WAS ONCE THERE



2007 Turning the place over by Richard Wilson

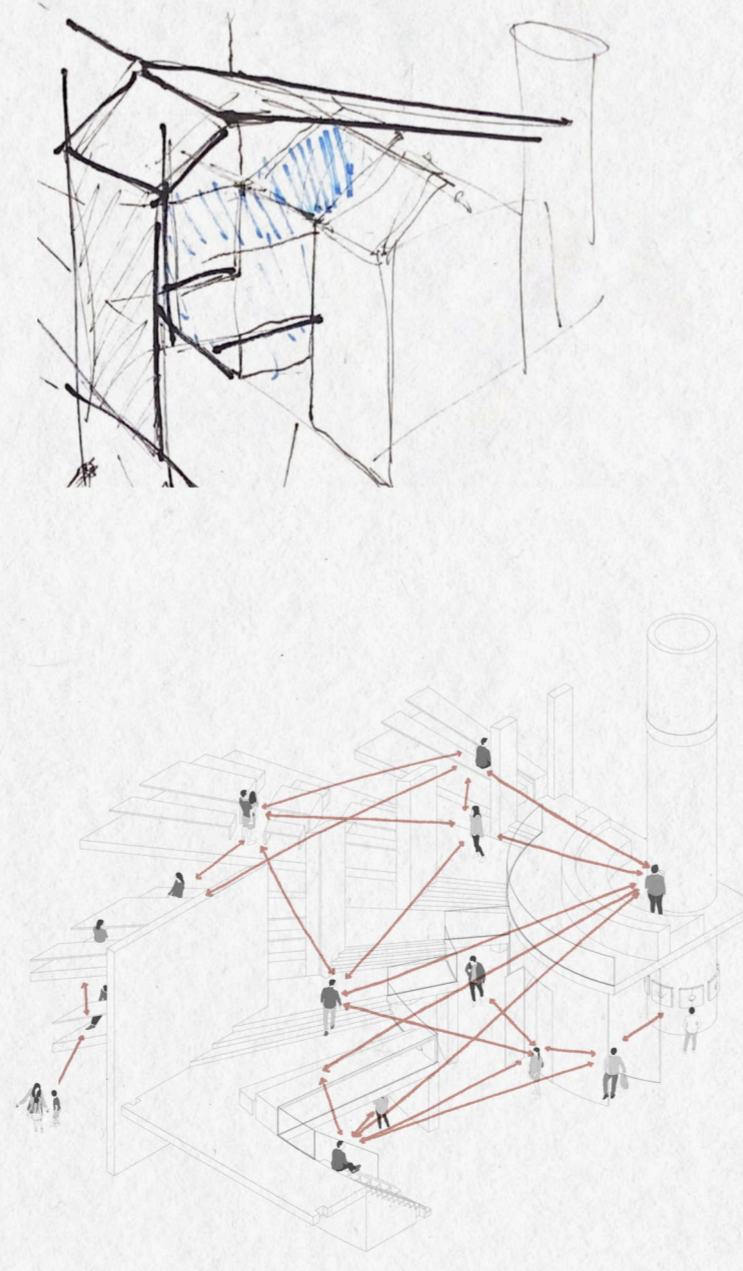
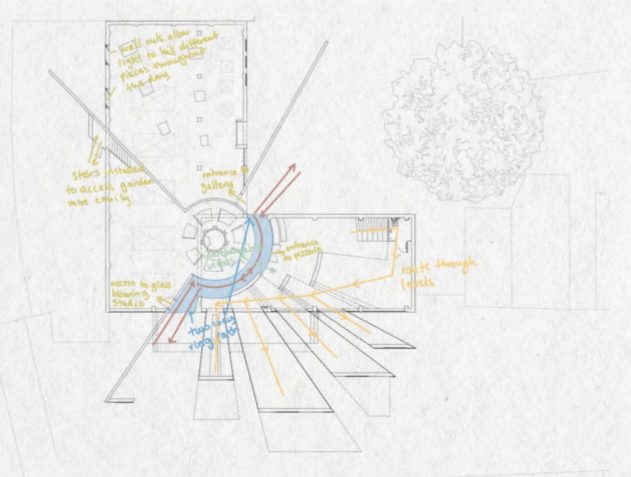
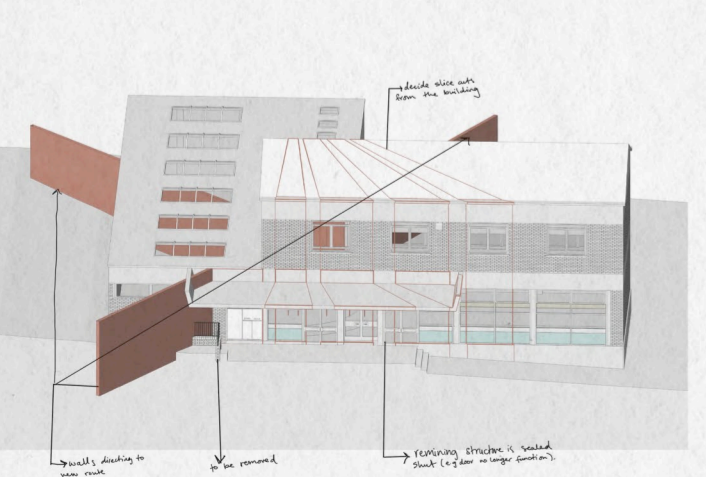
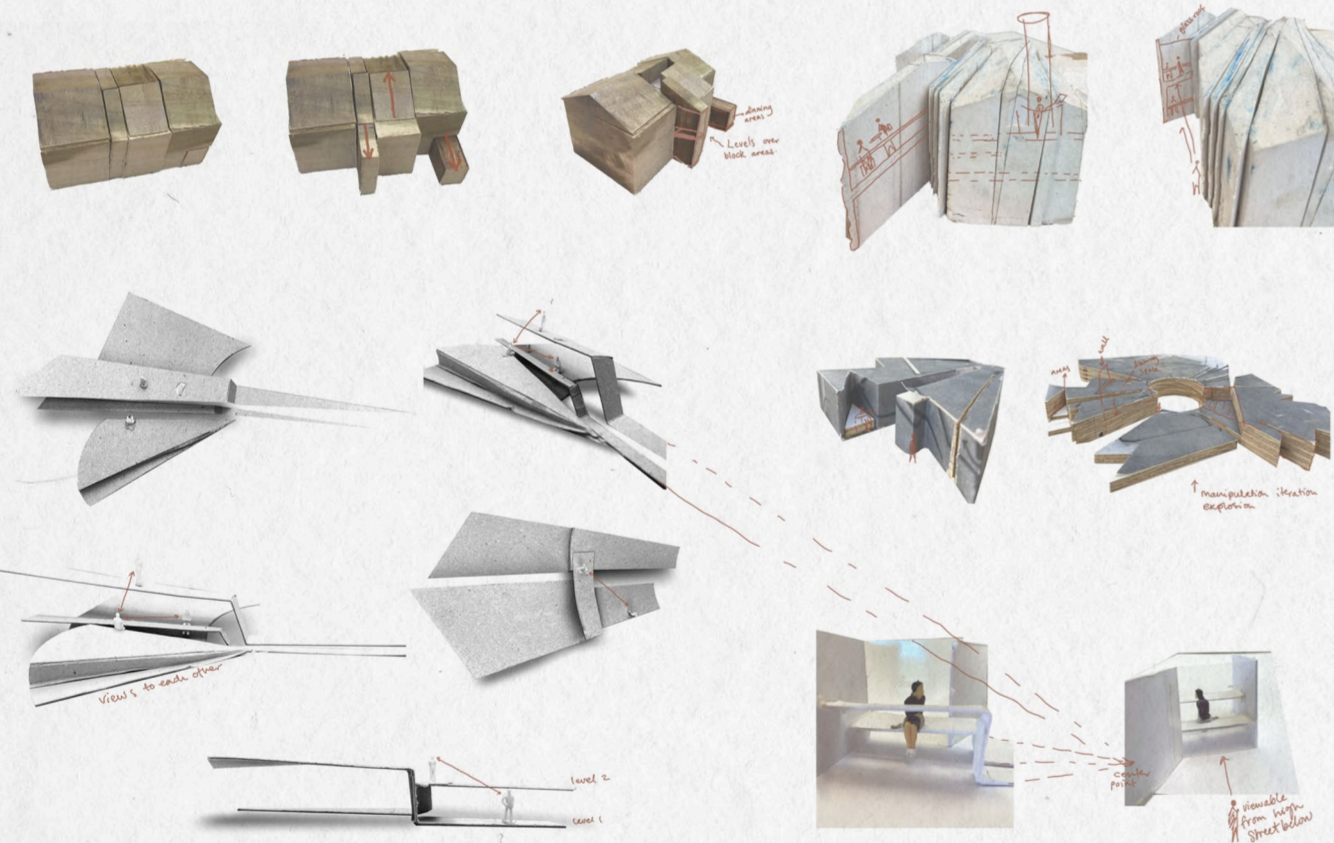


Islington terrace by Amin Taha

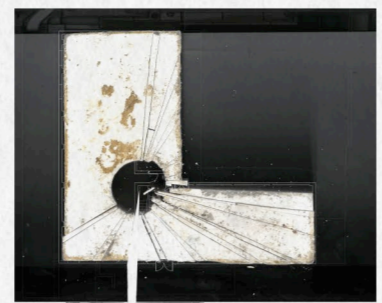
House by Rachel Whitehead

Replicating the old texture through 'terracotta' cast

Exploring many ways of representing history through different techniques. This project took the form of replicating the removed through terracotta cast, which outlined slide representing literal section cuts.



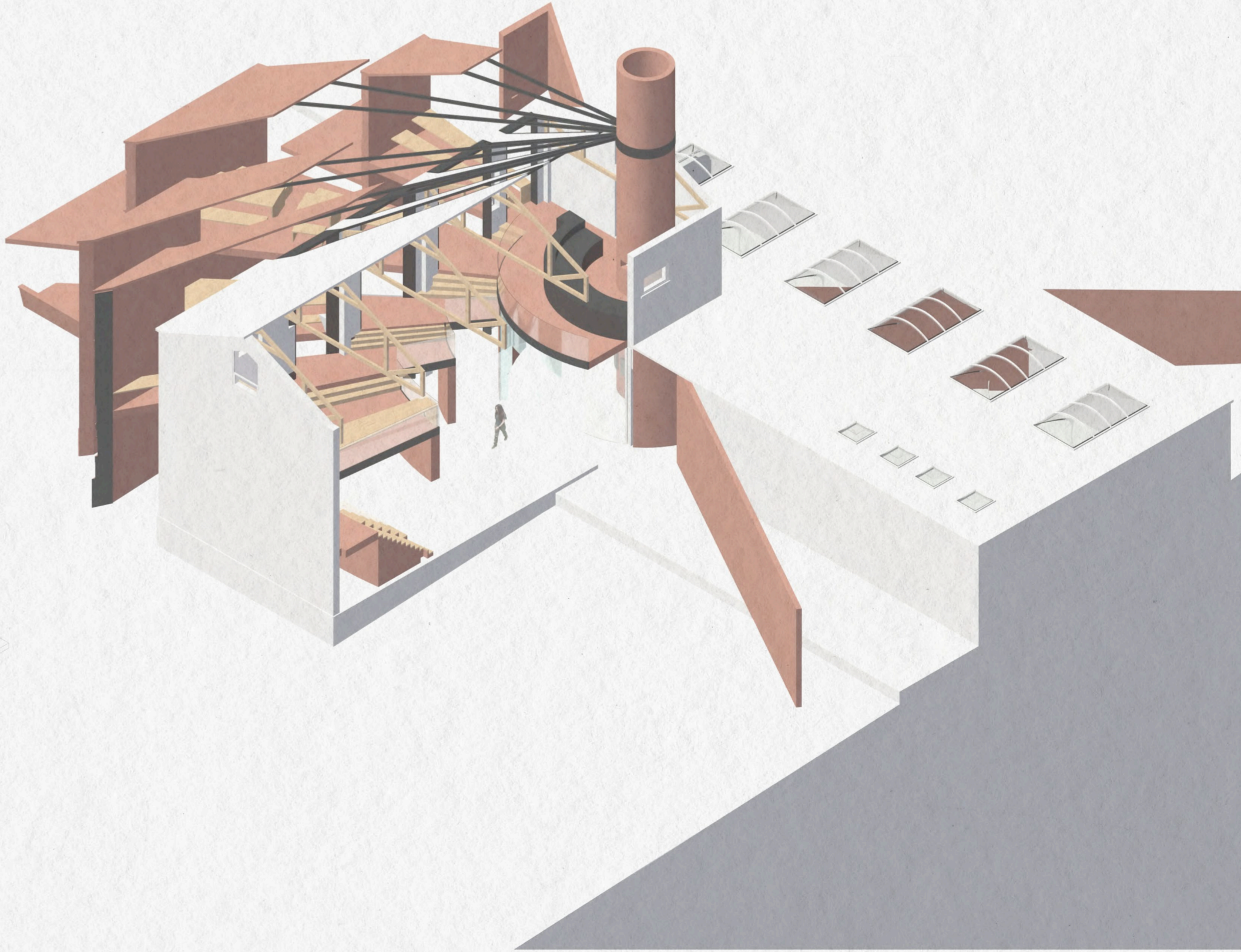
Multiple open levels allow for more interchangeable views whereby people can see/unseen depending on the position and level. The decision was made for the pizzeria as creating a multi-level dining experience whereby the user can view their food being prepared while enjoying the space. Upon entering the cooking area is not seen until the user wanders up the levels.



50mm powder-coated black metal fascia
Visually represents the section line taken from existing building as well as acting as a clamp for the glass

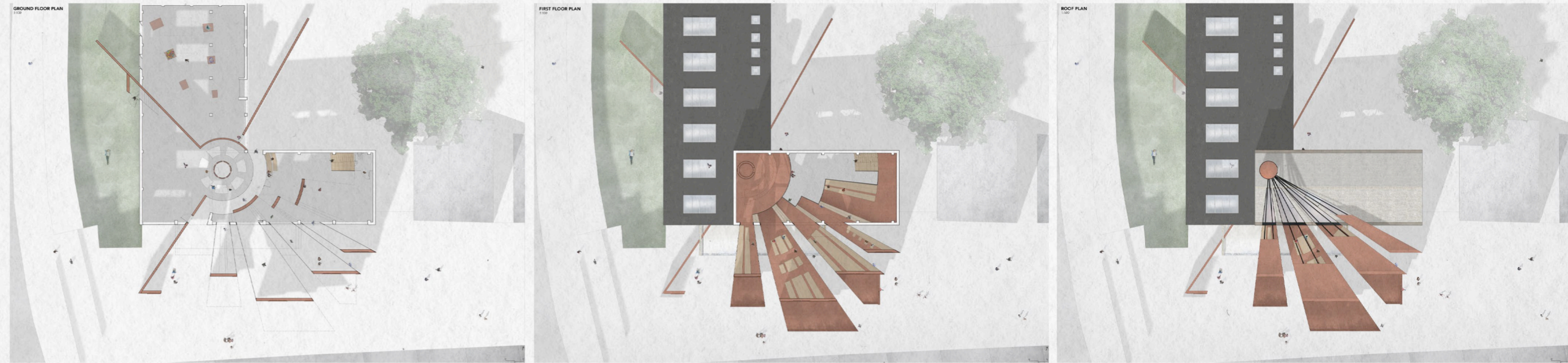
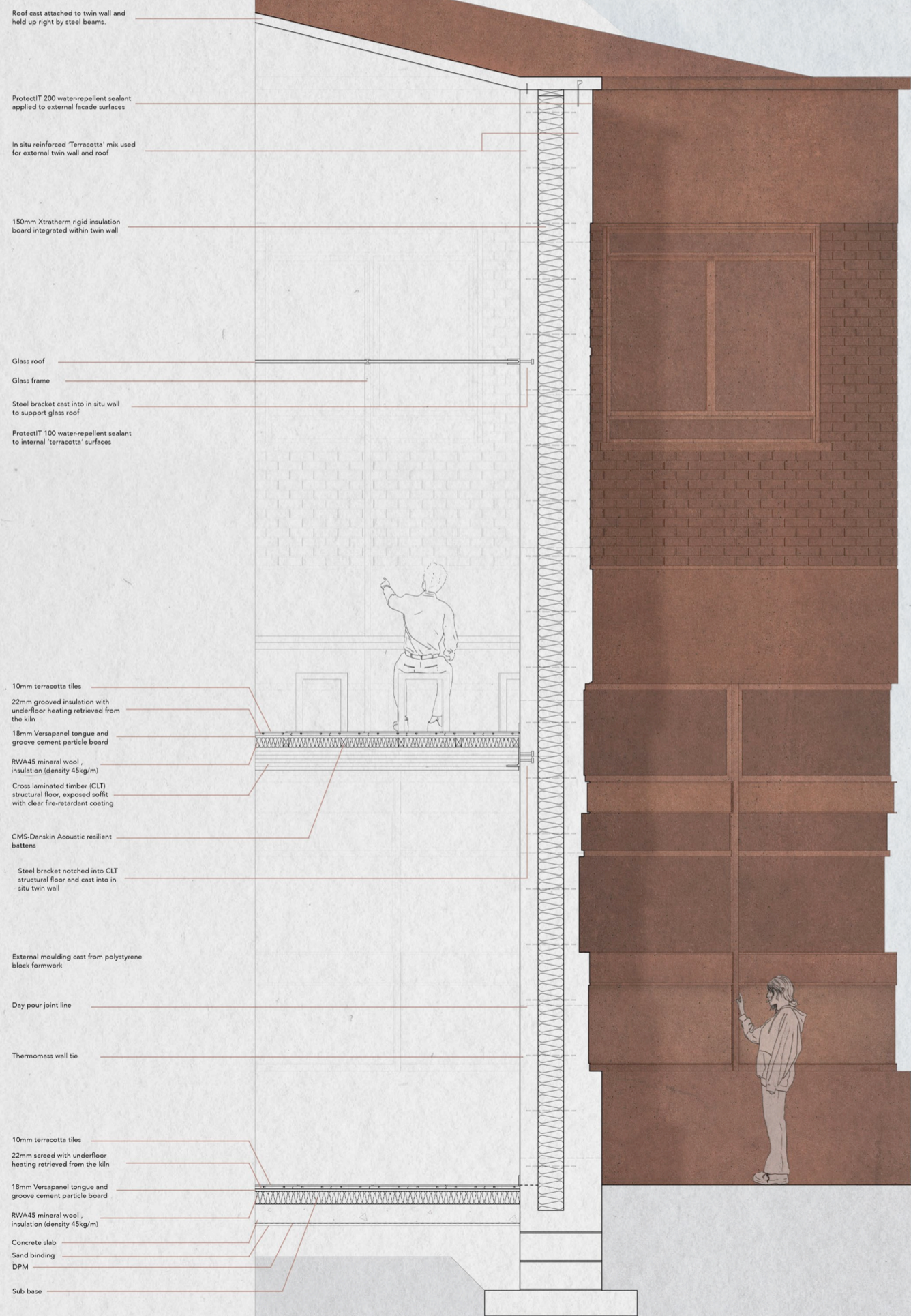
40mm powder-coated black metal fascia glass frame

Insulated glass panel



THE PROPOSAL
VIEWS

DETAIL SECTION
1:20



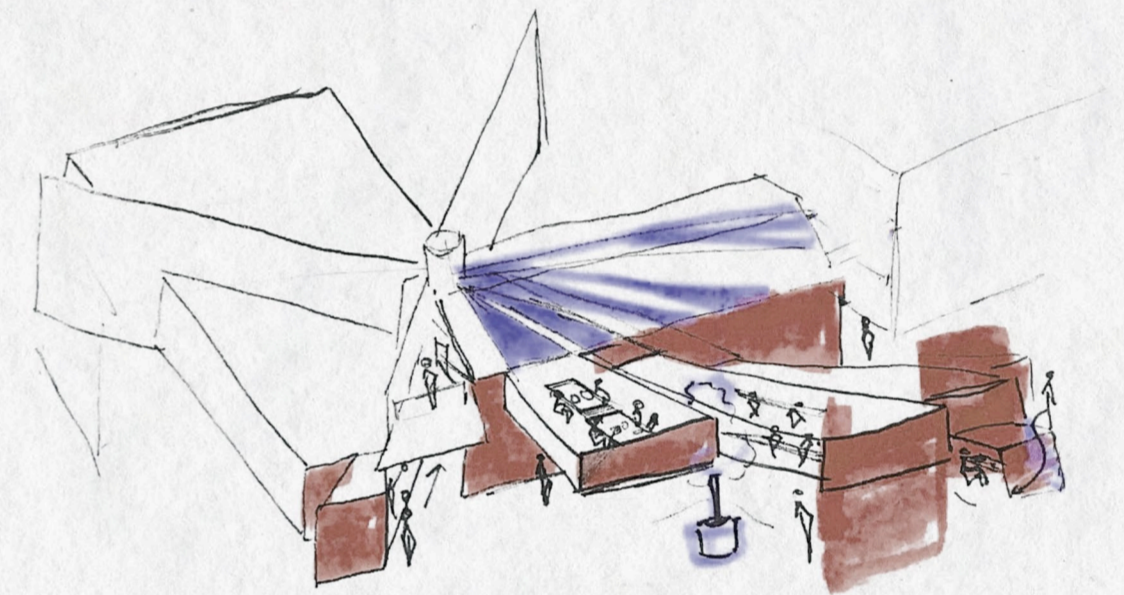
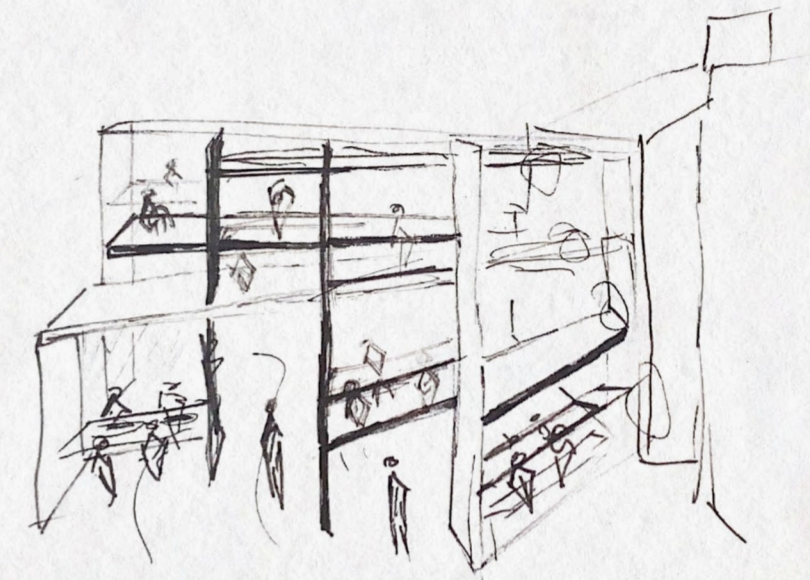
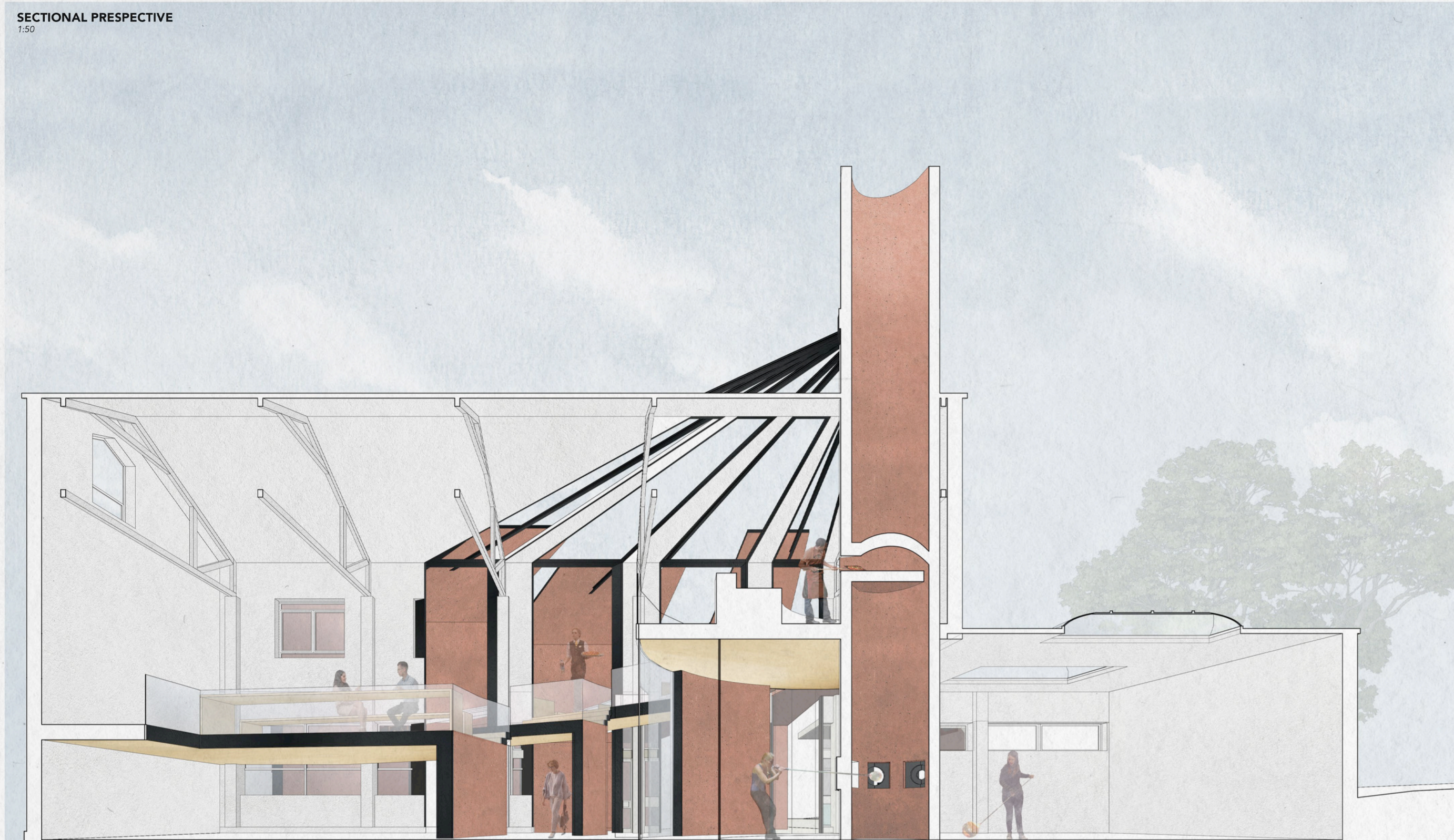
FRONT ELEVATION
1:100



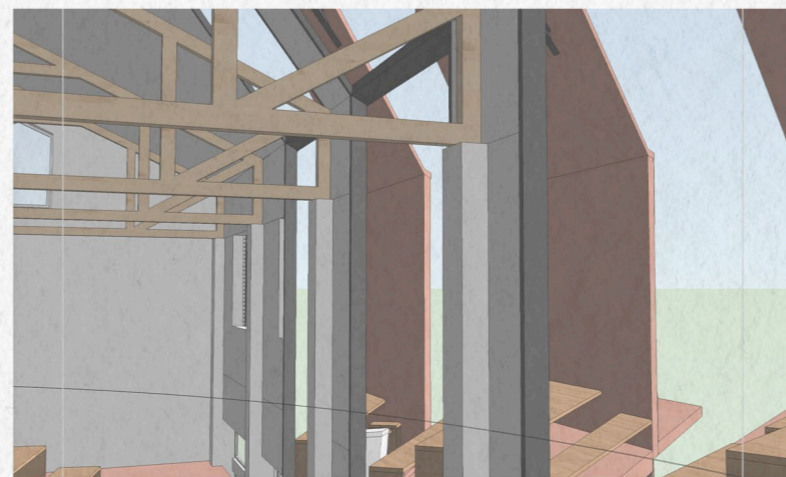
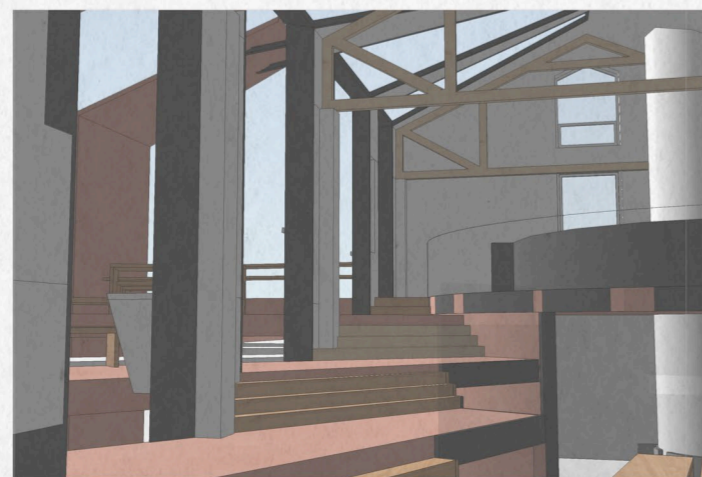
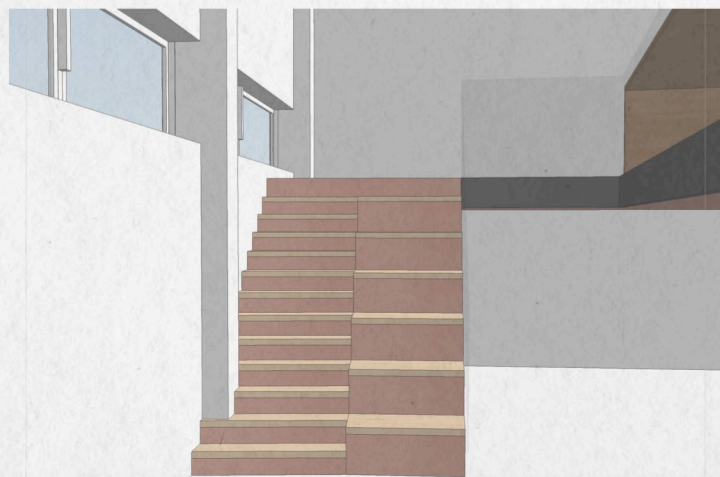
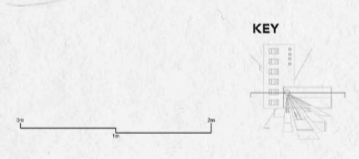
Upon on discovering these two programmes, they began to show similarities in how both move with the boundaries of circles using a line. Therefore, the point where they meet is interesting in the way both can function within the same space.

THE INBETWEEN
WHERE IT ALL MEETS

SECTIONAL PERSPECTIVE
1:50



KEY



EXTERIOR PERSPECTIVE
VIEW OF THE HIGH STREET

