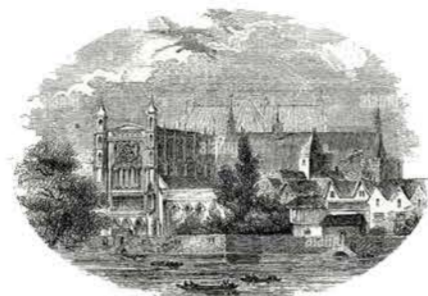




**1647**

At the age of 23, George Fox, founder of the quakers, documents in his journal the moment of his alleged divine revelation.



**1689**

parliament passes act of toleration, greatly reducing persecution of quakers and other non conformists.



**1780-1845**

Elizabeth Fry, the 'angel of prisons', a quaker who campaigned successfully for prisoners rights.



**1801-1889**

John Cadbury, founder of the cadbury confectionary company.



**1913-1994**

Richard Nixon's Quaker upbringing may have been the influence behind such policies as the creation of the Environmental protection agency, pulling out of Vietnam and unilaterally destroying the USA's nerve agent and chemical weapons stockpiles.

**Today,**

Quakers have a long-standing commitment to environmental sustainability and protection, stemming from their belief in the interconnectedness of all living beings and their responsibility to care for the earth. Quaker values such as simplicity, nonviolence, and community also support their commitment to environmental stewardship.



**1681**

Pennsylvania established by William Penn, a quaker, as place of religious freedom for quakers.



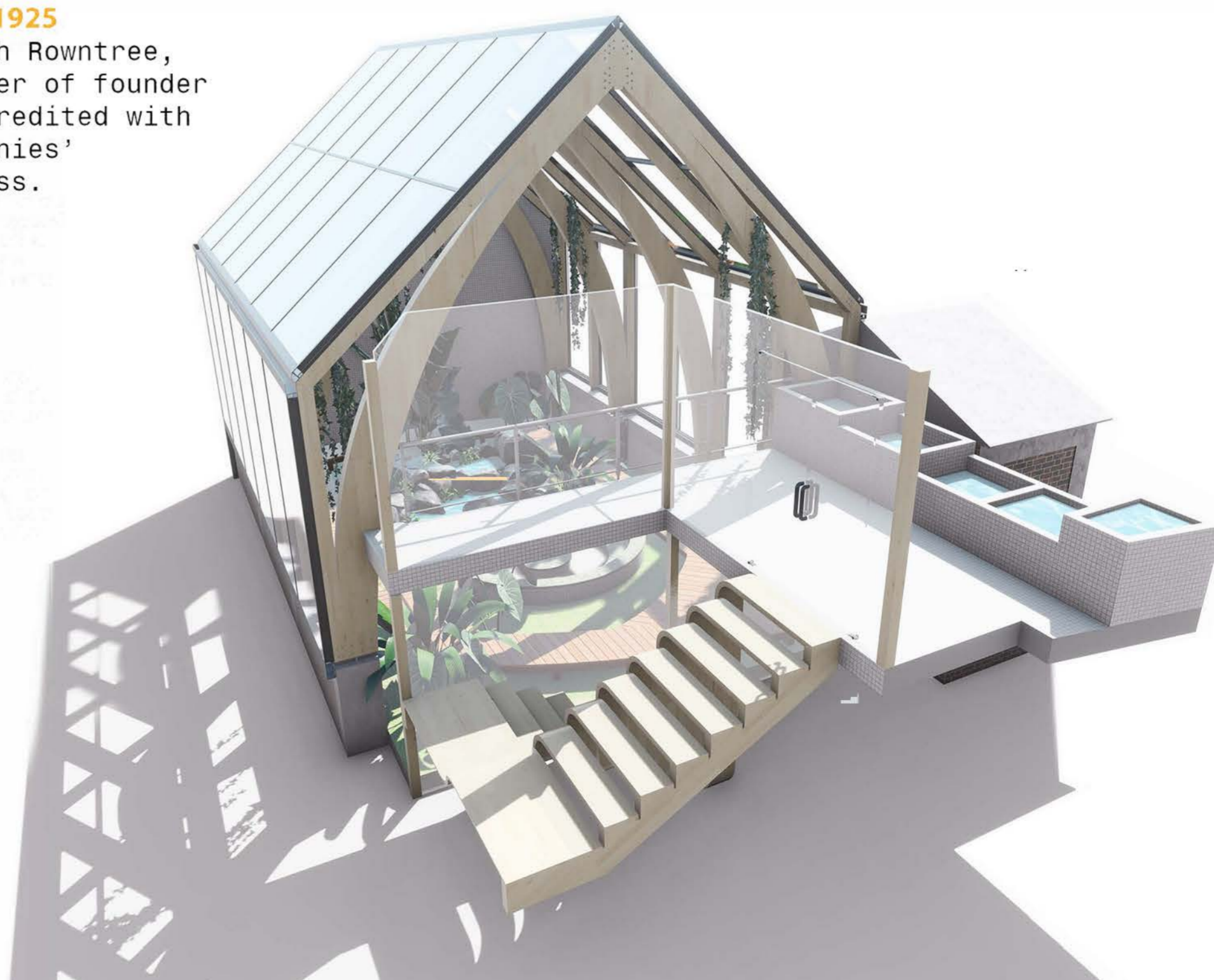
**1837-1925**

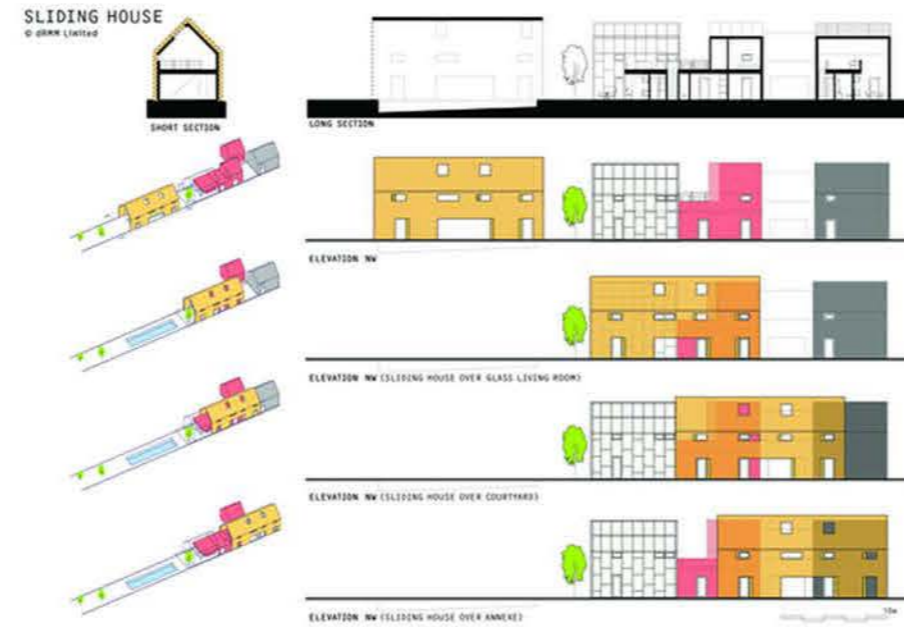
Joseph Rowntree, brother of founder and credited with companies' success.

The Quakers in Lewes, in partnership with the charity Save the Frogs, have made a bold move to use their historic meeting house as a terrarium for breeding endangered frog species.

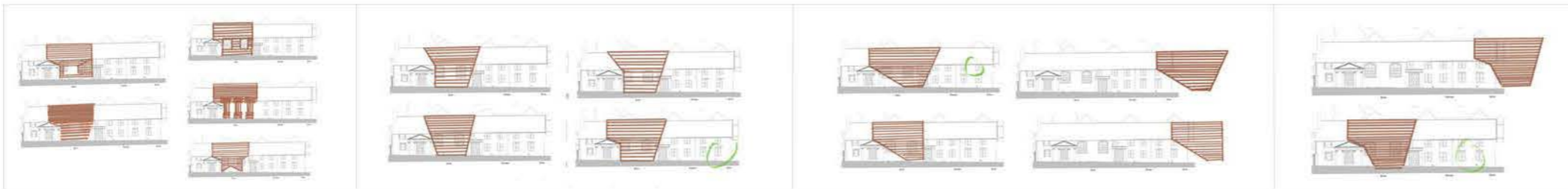
With the help of Save the Frogs, the Quakers will transform their meeting house into a state-of-the-art terrarium, complete with artificial ponds, misting systems, and temperature control equipment to create the ideal habitat for endangered frog species.

Inspired by the Quakers' deep commitment to environmental stewardship and the protection of all living beings, the project intends to capture the imagination of the local community, visit the meeting house to learn more about the importance of the conservation.

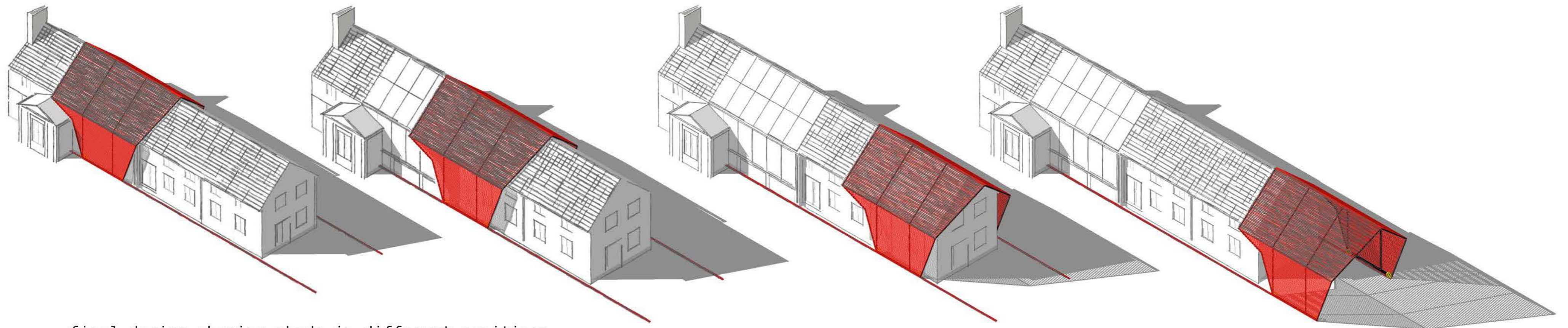




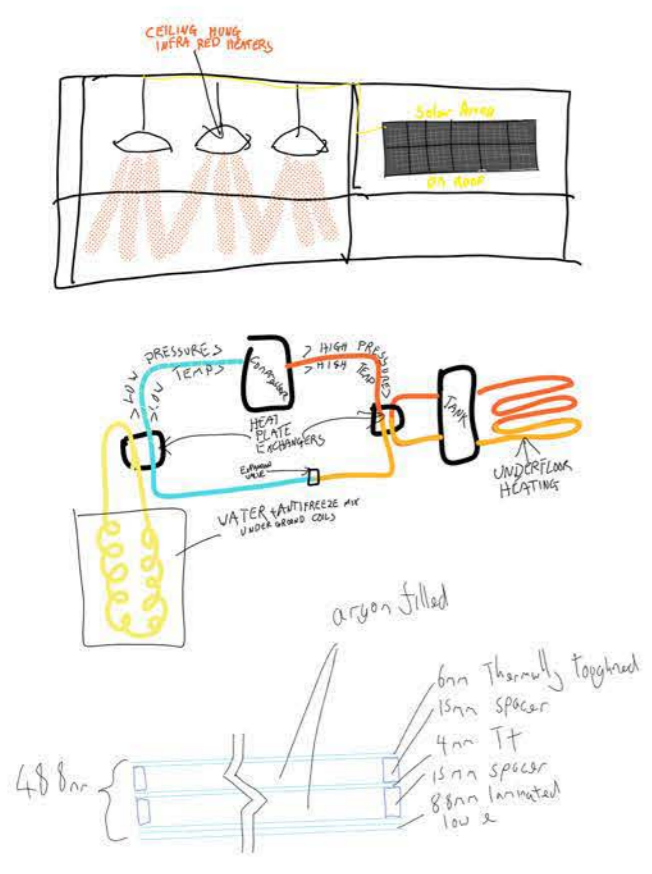
The sliding house by dRRM a precedent for a way of controlling over exposure to sunlight and creating an extra shaded outdoor space



iterations



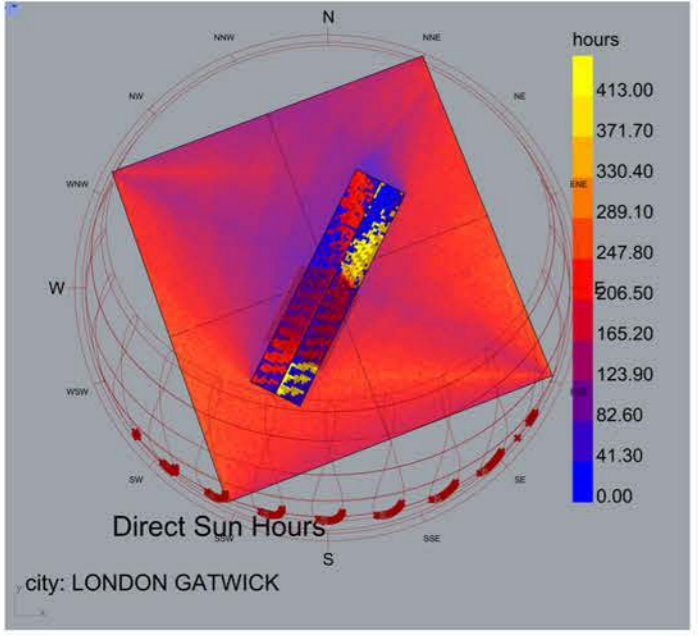
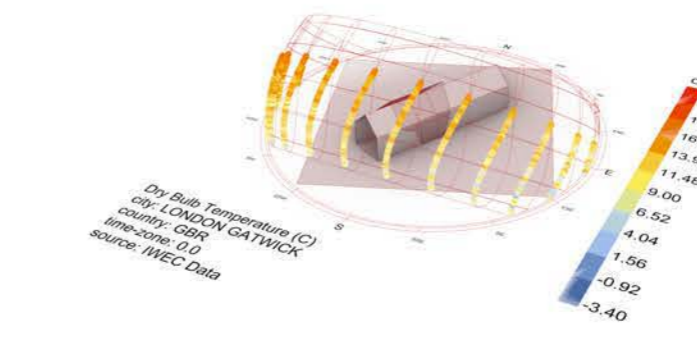
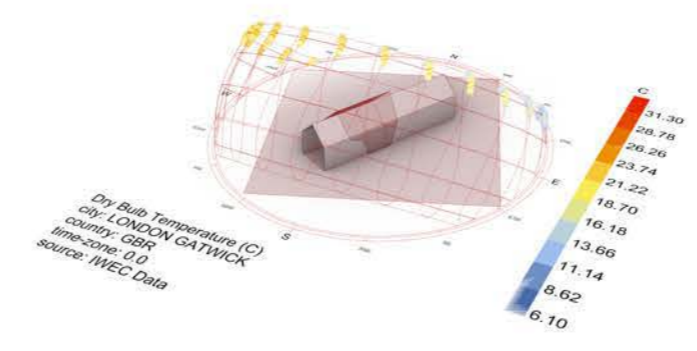
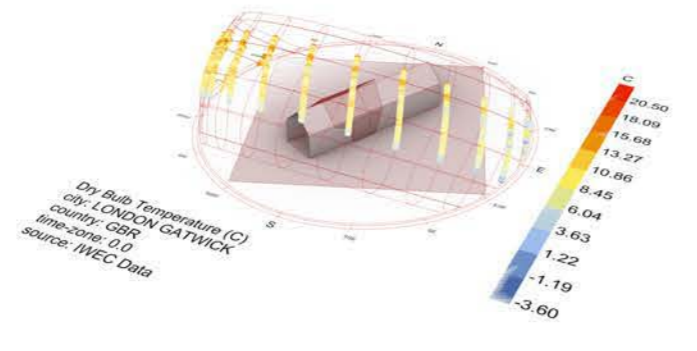
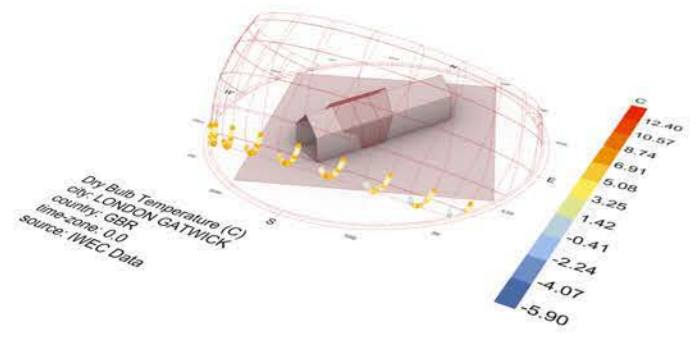
final design showing shade in different positions



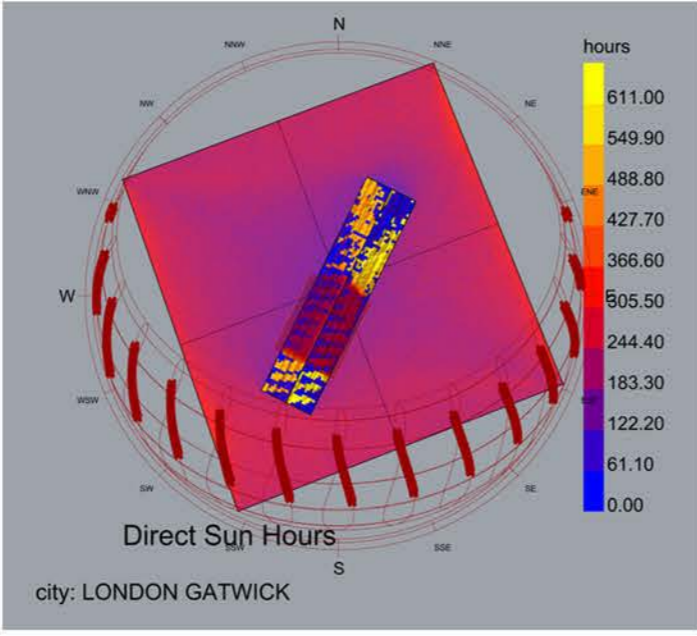
heating possibilities



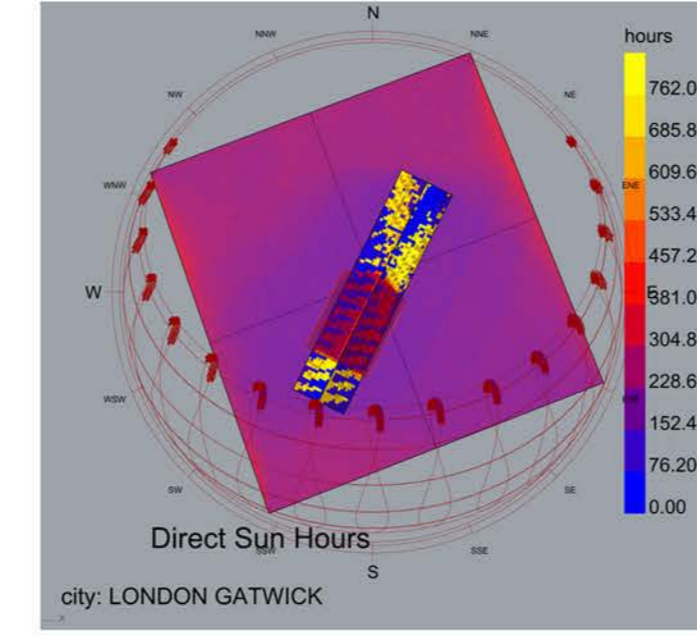
ducting controlled temperature air in roof space.



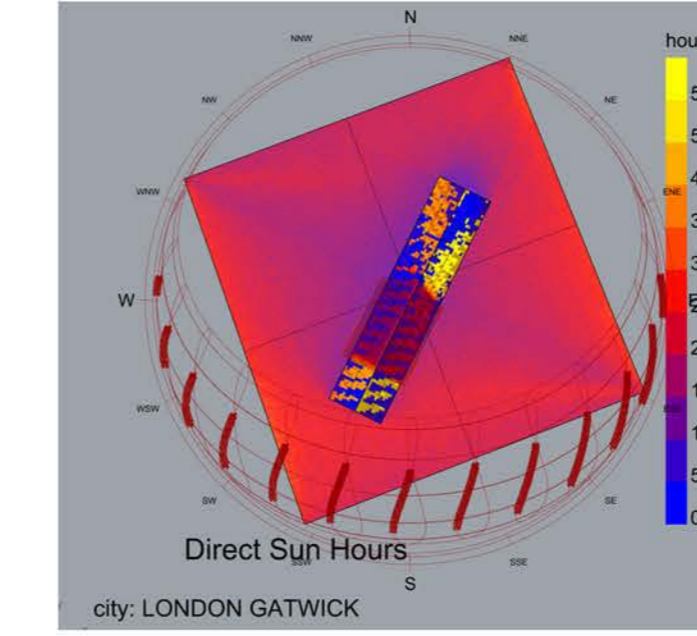
Dec - Feb



Mar - May

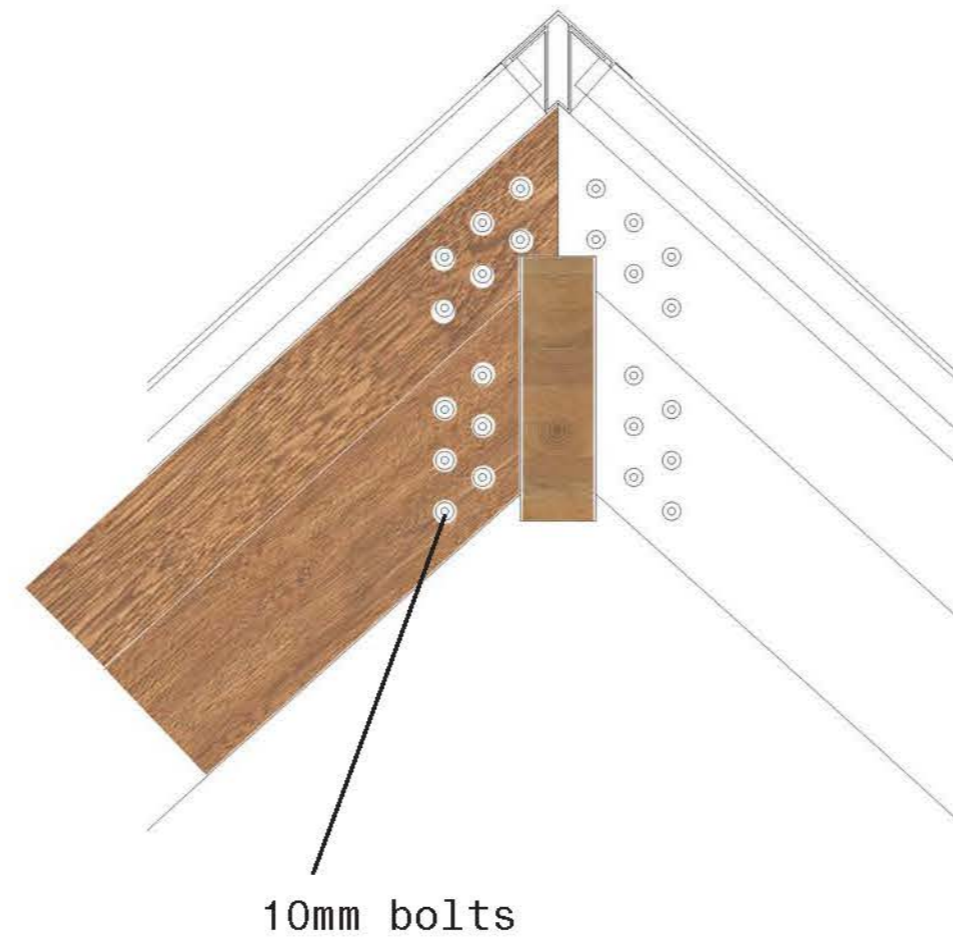


Jun - Aug

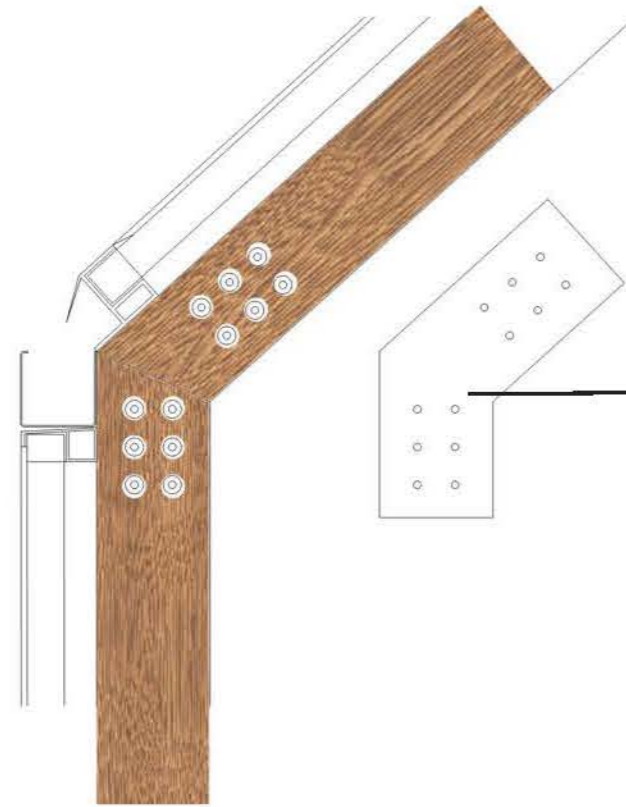
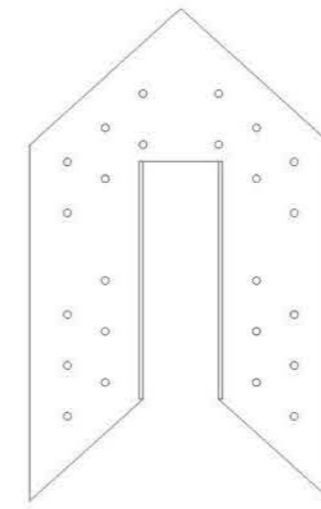


Sep - Nov

Sun path and exposure through different times of year, showing reduction produced by retractable shade



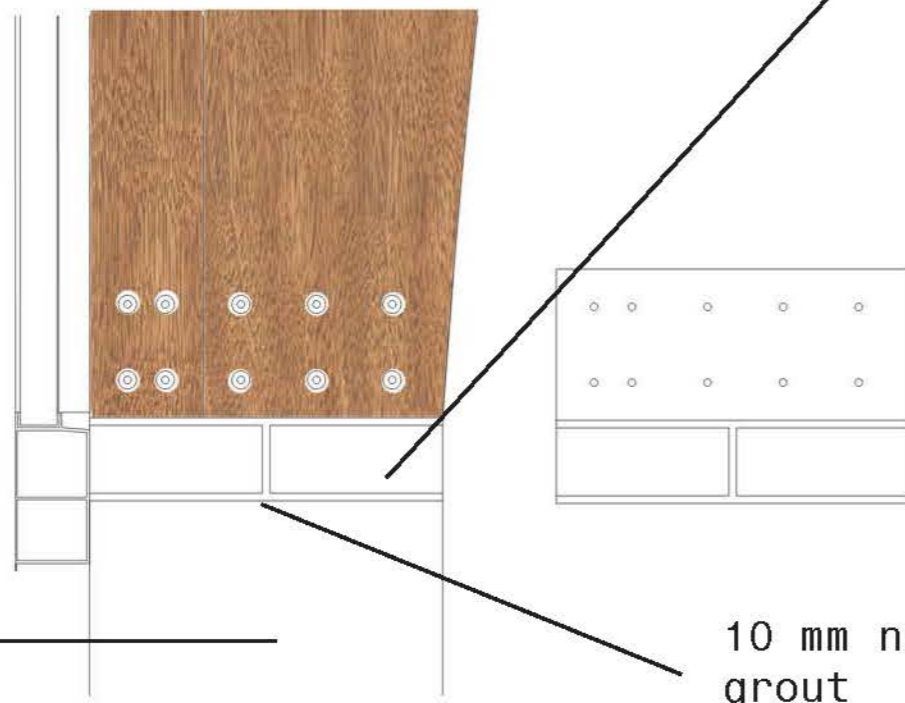
10mm bolts



10mm steel plates with predrilled holes

Pre-fabricated glulam beams, posts and rafters

24mm threaded bar set into concrete, fix with nuts



Steel reinforced concrete

10 mm non-shrink grout

