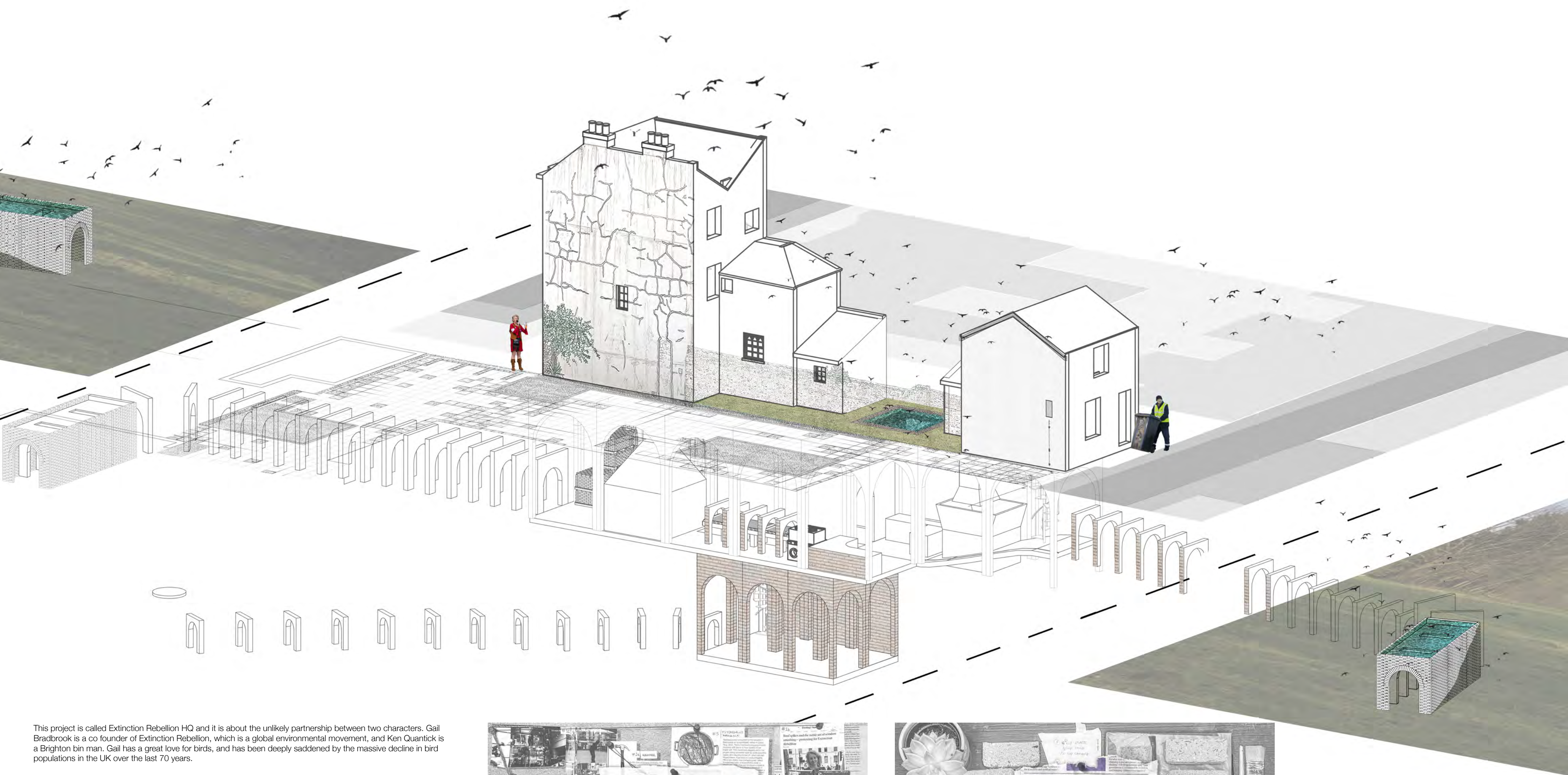


# EXTINCTION REBELLION HQ & PROTEST NETWORK



This project is called Extinction Rebellion HQ and it is about the unlikely partnership between two characters. Gail Bradbrook is a co founder of Extinction Rebellion, which is a global environmental movement, and Ken Quantick is a Brighton bin man. Gail has a great love for birds, and has been deeply saddened by the massive decline in bird populations in the UK over the last 70 years.

Ken was in the newspaper for blowing the whistle on Veolia, who are responsible for Brighton's recycling. They were instructing him to take 8 tonnes of recycling to the incinerator in Newhaven everyday. This is why he salvages some of the recycling before it goes to the incinerator, and takes it home where he recycles it himself into his own plastic laced bricks. Gail recruits Ken to come and create a network of protest points around Brighton, which are disguised as bird baths, and connected to the HQ via tunnel. The HQ is disguised as two normal houses, but underground their basements are connect by arches creating a vaulted interior for making the plastic bricks to build the bird baths. Whilst it was being built, the void that is the bird bath skylight was used to lower the machines into the space, and now it acts as a lightwell, as well as being a part of the bird nature corridors created.

Ken brings home plastic from work, chucks it down a shoot down into a long, linear, subterranean space, and this takes it directly to the plastic shredder underground. The excavated material from digging the tunnels is manually crushed so that the pieces are fine enough to be added to a brick mixture. The plastic and the excavated material are mixed together in washing machines, then set into brick moulds. These moulds are then taken via conveyerbelt across to the kiln where they will be fired before being taken to their bird bath loaction via tunnels, and built on location.

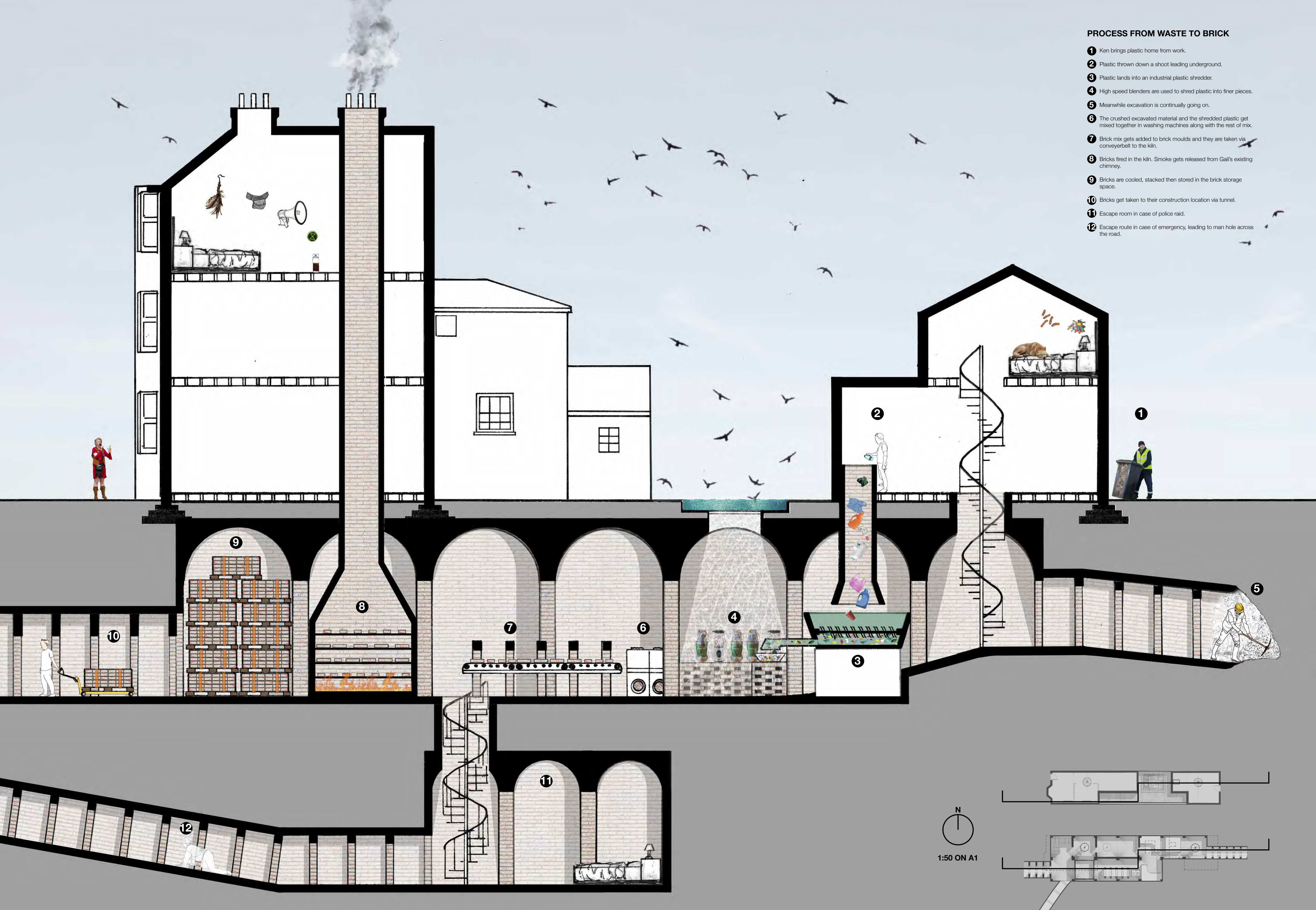
Extinction Rebellion HQ is a secret subterranean factory disguised as two normal houses. Underground in the arch vaulted basement they are producing recycled plastic bricks. These plastic bricks are being used to build a network of protest meeting points around Brighton that are disguised as bird baths, and connected to the HQ via a tunnel. The bird baths give Extinction Rebellion supporters somewhere to meet up while also create nature corridors for Brighton's bird populations which are declining. Excavating these tunnels will leave them with a lot of material, which will be moved back to the HQ and added to the brick mixture so nothing gets wasted.





PROCESS FROM WASTE TO BRICK

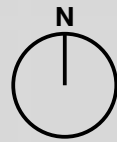
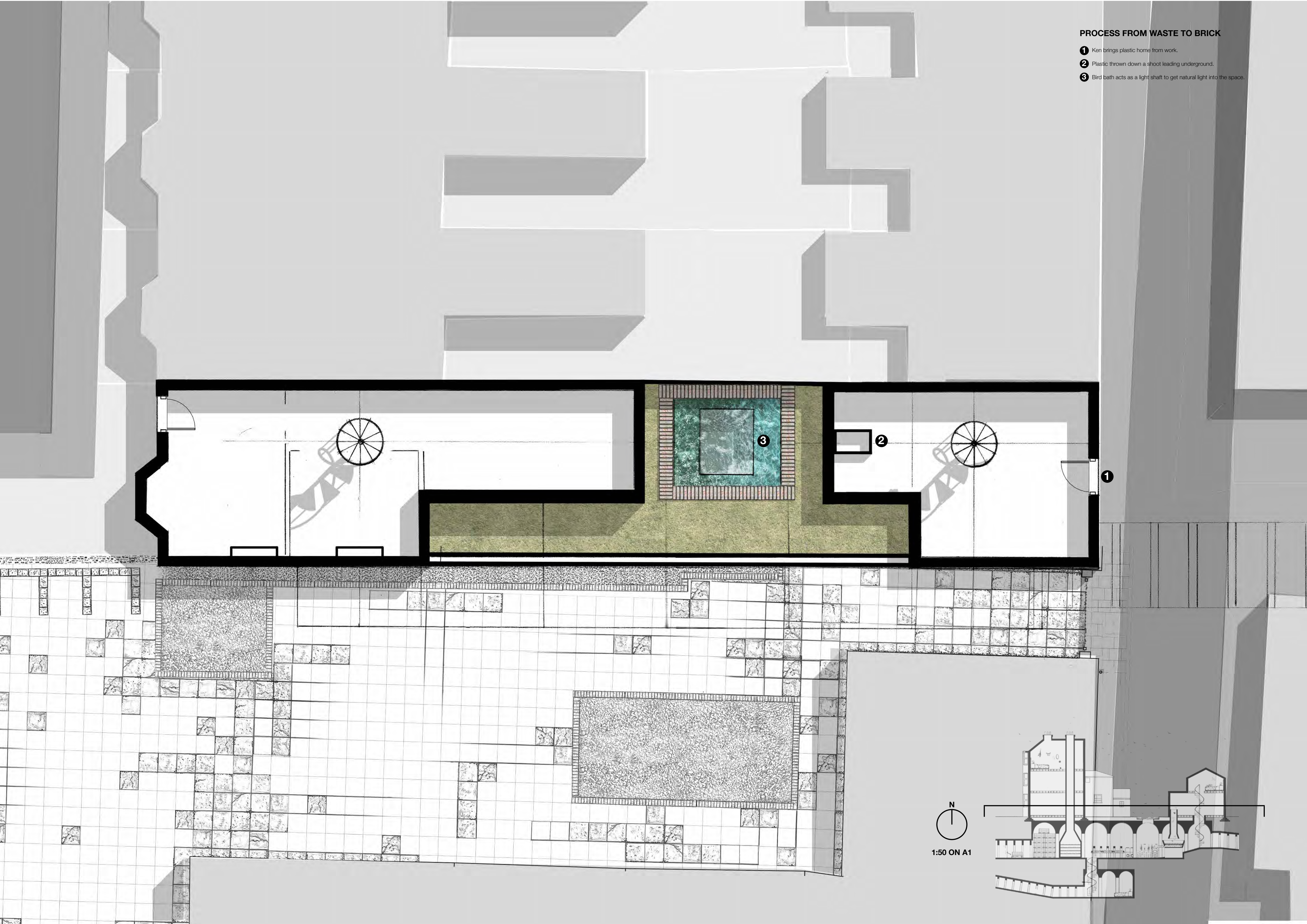
- 1 Ken brings plastic home from work.
- 2 Plastic thrown down a shoot leading underground.
- 3 Plastic lands into an industrial plastic shredder.
- 4 High speed blenders are used to shred plastic into finer pieces.
- 5 Meanwhile excavation is continually going on.
- 6 The crushed excavated material and the shredded plastic get mixed together in washing machines along with the rest of mix.
- 7 Brick mix gets added to brick moulds and they are taken via conveyerbelt to the kiln.
- 8 Bricks fired in the kiln. Smoke gets released from Gail's existing chimney.
- 9 Bricks are cooled, stacked then stored in the brick storage space.
- 10 Bricks get taken to their construction location via tunnel.
- 11 Escape room in case of police raid.
- 12 Escape route in case of emergency, leading to man hole across the road.



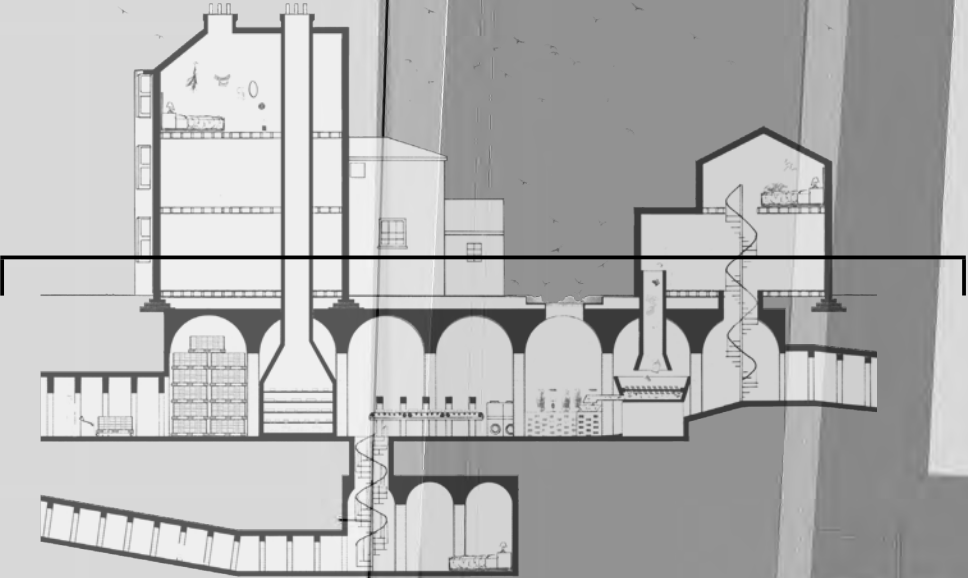


PROCESS FROM WASTE TO BRICK

- 1 Ken brings plastic home from work.
- 2 Plastic thrown down a shoot leading underground.
- 3 Bird bath acts as a light shaft to get natural light into the space.



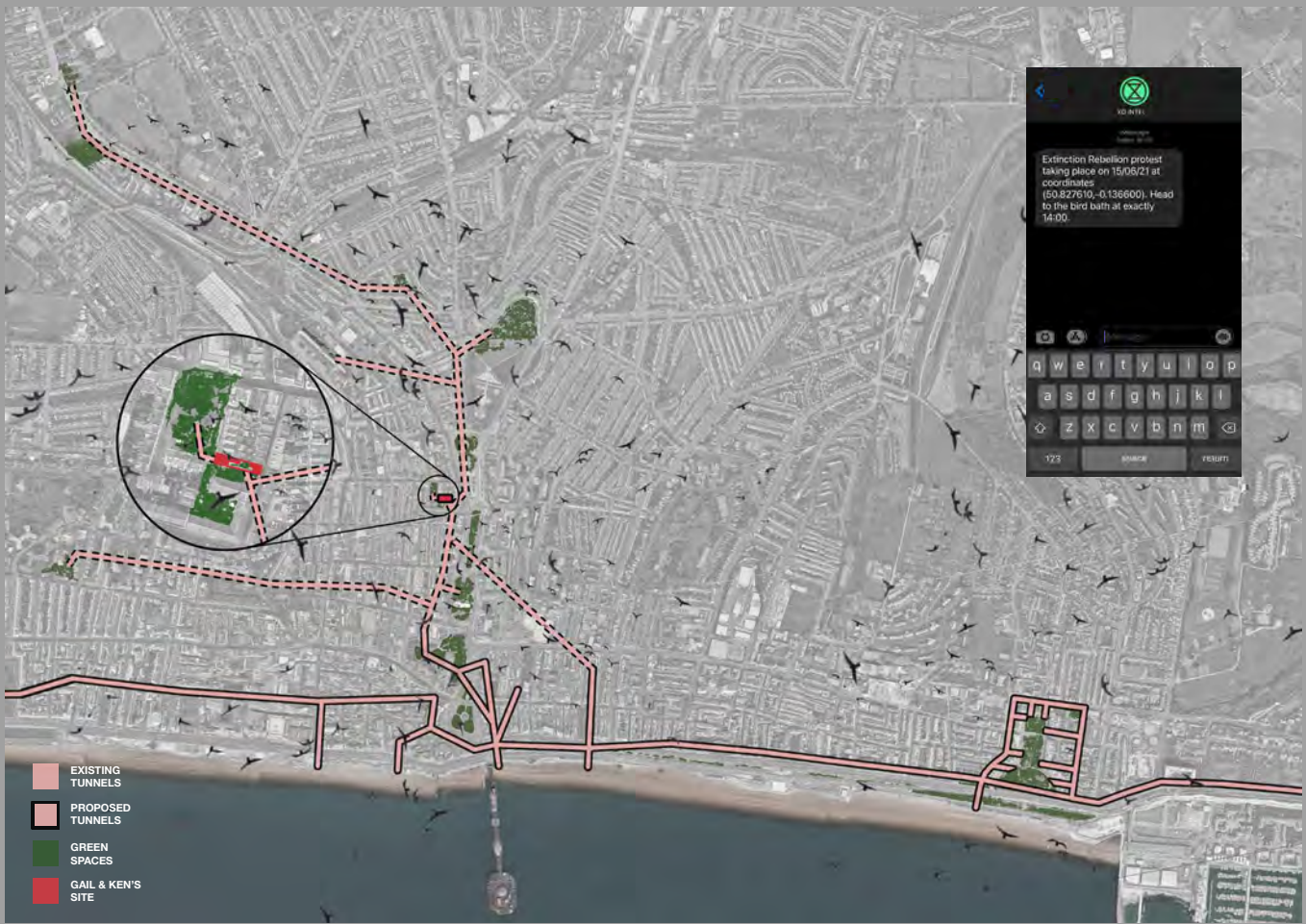
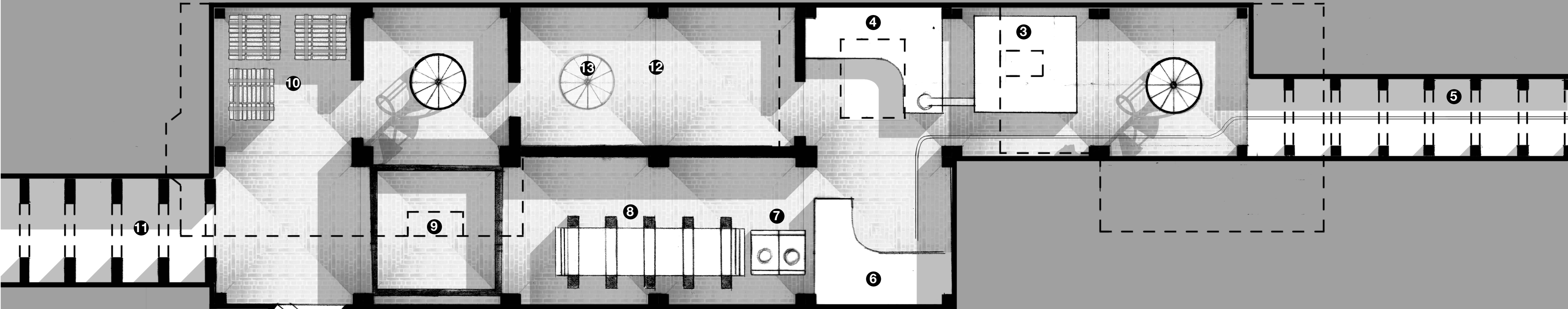
1:50 ON A1





PROCESS FROM WASTE TO BRICK

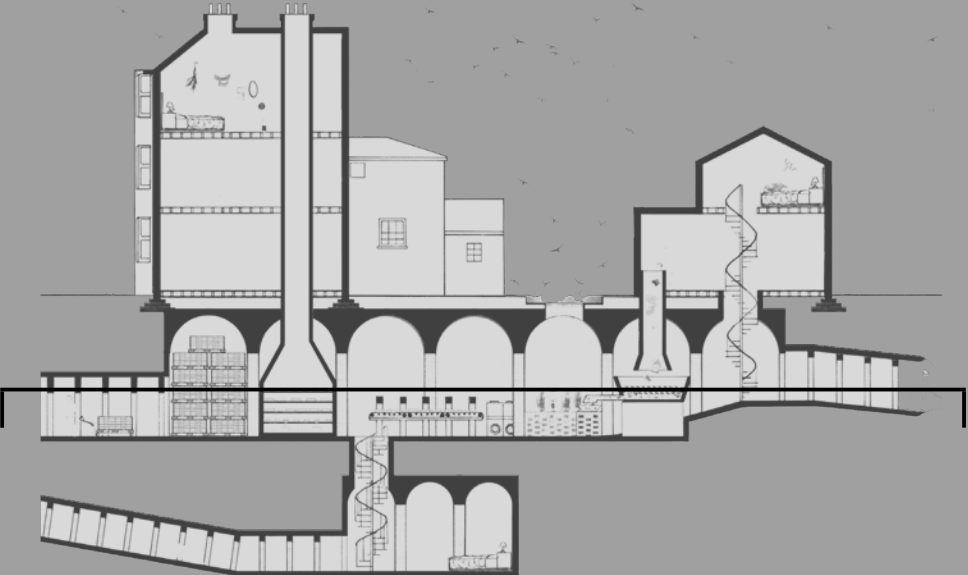
- 3 Plastic lands into an industrial plastic shredder.
- 4 High speed blenders are used to shred plastic into finer pieces.
- 5 Meanwhile excavation is continually going on.
- 6 The excavated material gets brought into the workshop via rail and is crushed manually into fine pieces.
- 7 The crushed excavated material and the shredded plastic get mixed together in washing machines along with the rest of mix.
- 8 Brick mix gets added to brick moulds and they are taken via conveyerbelt to the kiln.
- 9 Bricks fired in the kin. Smoke gets released from Gail's existing chimney.
- 10 Bricks are cooled, stacked then stored in the brick storage space.
- 11 Bricks get taken to their construction location via tunnel.
- 12 Meeting space where Gail and Ken work out where to put the next bird bath.
- 13 Secret stairs hidden by furniture leading to escape room in case of police raid.
- 12 Escape route in case of emergency, leading to man hole across the road.



This map is displayed in the meeting room where Gail and Ken discuss possible locations for these bird bath protest points.

The green is possible gardens that would be good to build a bird bath in, and the pink with the solid line are existing tunnels in Brighton. The dotted are the proposed tunnels to get to the bird baths that would link up to existing existing routes, extend them and also make new routes.

Gail starts spreading the word to her supporters of the location via an encrypted messaging service. It tells them the co ordinates of the bird bath and the time to go there.





# 1:1 LACED BRICKWORK DETAIL

These are the bricks that are being made at  
Extinction Rebellion HQ. They are

- 1 part plastic
- 1 part excavated material (mainly chalk)
- water
- cement

These are used to build both the bird bath protest  
points and the HQ itself. For the non supporting  
structures of the design the bricks are laid in this  
laced pattern, to still allow light to pass through.

## 1:20 BIRD BATH PROTEST POINT

