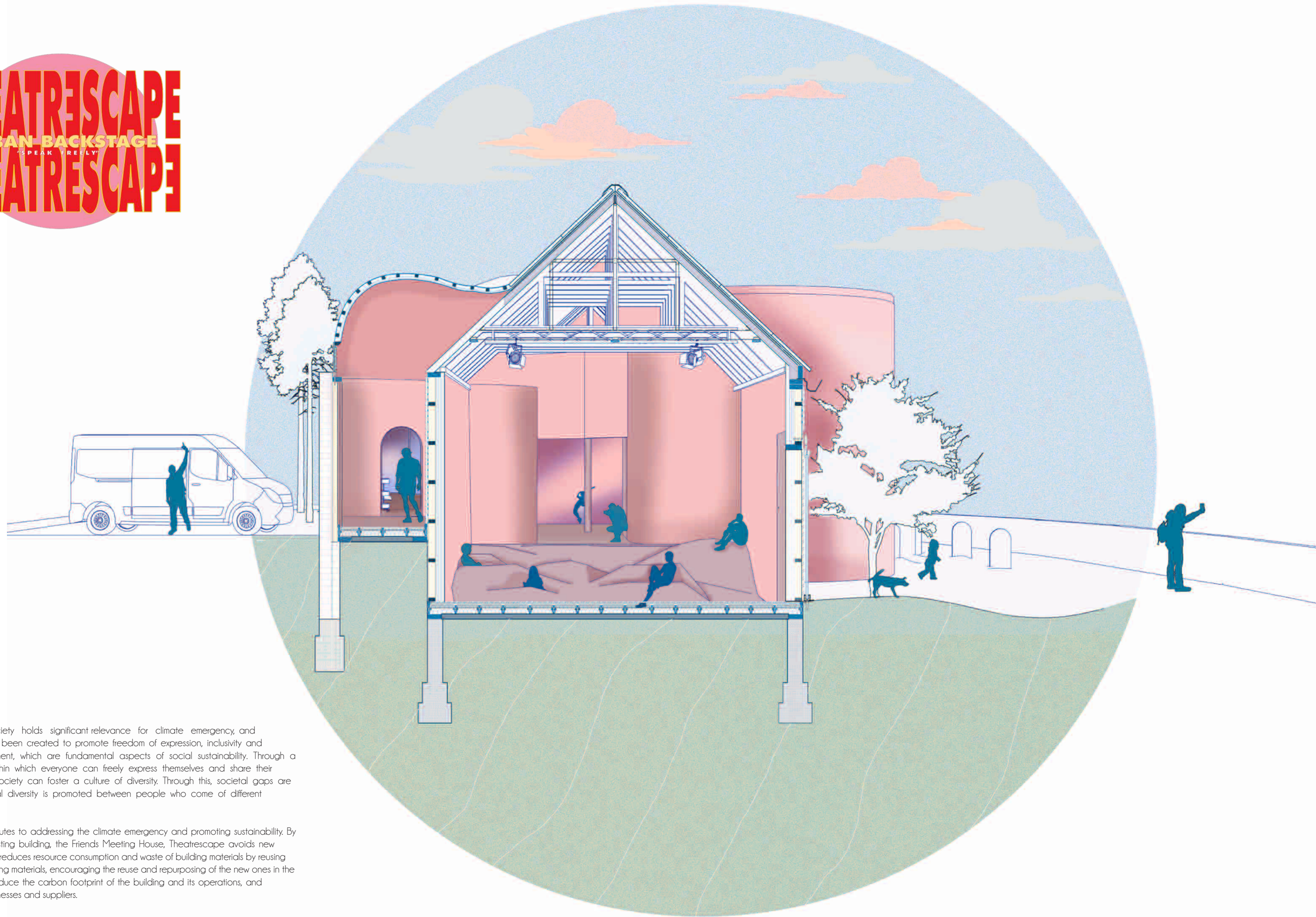


THEATRESCAPE

URBAN BACKSTAGE

"SPEAK FREELY"

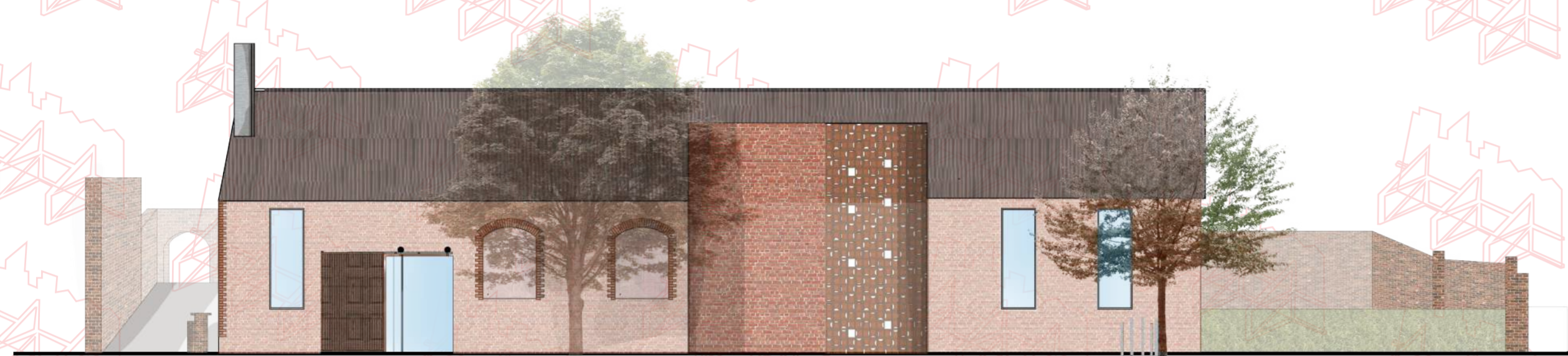
THEATRESCAPE



Theatrescape Society holds significant relevance for climate emergency, and sustainability. It has been created to promote freedom of expression, inclusivity and community involvement, which are fundamental aspects of social sustainability. Through a physical space within which everyone can freely express themselves and share their perspectives, this society can foster a culture of diversity. Through this, societal gaps are bridged, and social diversity is promoted between people who come of different backgrounds.

The project contributes to addressing the climate emergency and promoting sustainability. By repurposing an existing building, the Friends Meeting House, Theatrescape avoids new construction. It also reduces resource consumption and waste of building materials by reusing and recycling existing materials, encouraging the reuse and repurposing of the new ones in the future. It seeks to reduce the carbon footprint of the building and its operations, and supports local businesses and suppliers.

SOUTH EAST SIDE ELEVATION



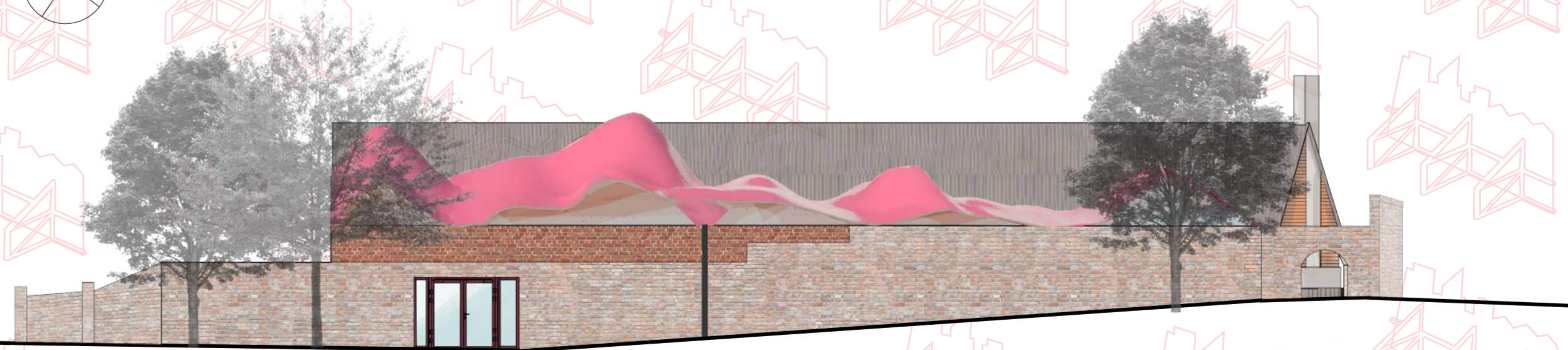
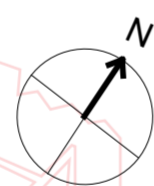
SCALE 1:100



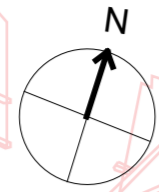
NORTH WEST ELEVATION



SCALE 1:100

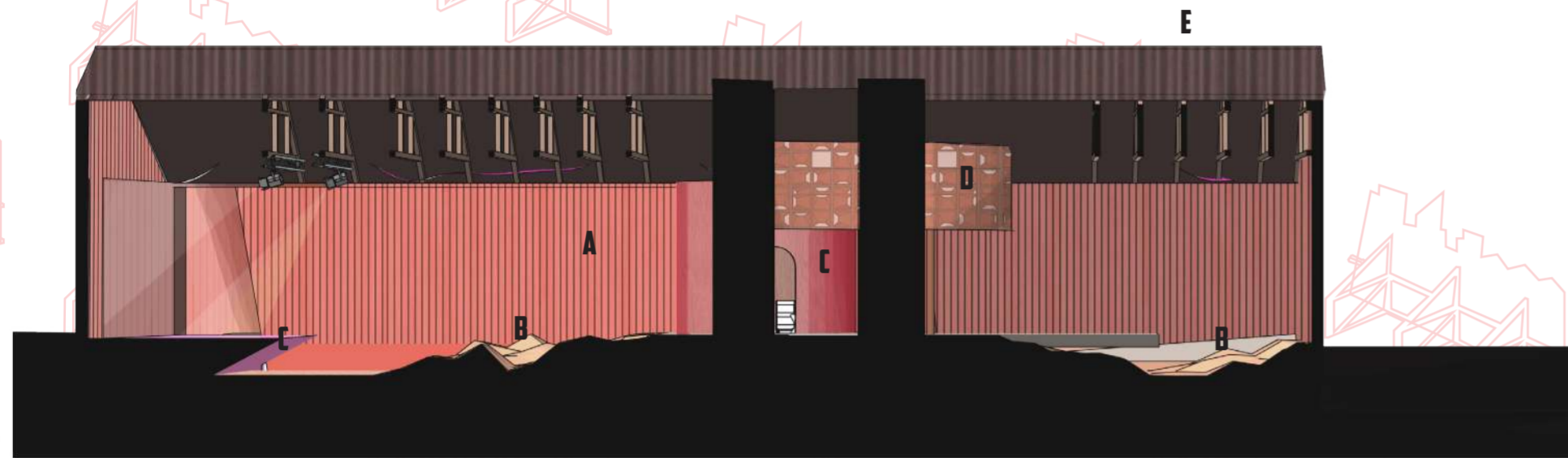
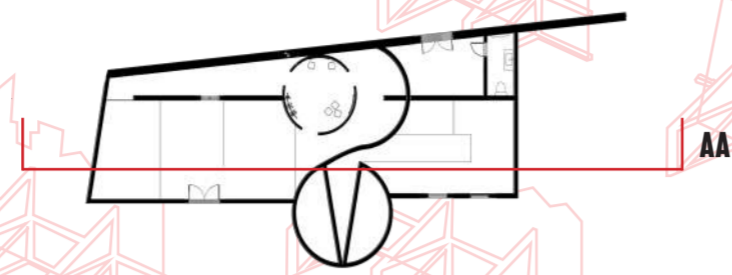


SOUTH EAST SECTION AA



0 Mt 2 4 8

SCALE 1:100



A  reused timber slats acoustic wall panels (allow for sound reflection in the space)

B  Cork Plank Flooring

C  Plywood

D  Timber and reclaimed clay tiles

E  Hemp fibre corrugated panels

- + Sound absorption
- + Environmental sustainability
- + Durability
- Vulnerability to moisture

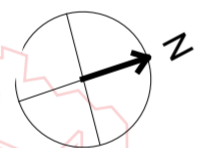
- + Fire resistant and retardant
- + excellent acoustical, thermal insulation (perfect for theatre space)
- + warm and soft surface making it perfect for seating audience
- susceptible to damage
- can fade in sunlight

- + cost-effective as working with limited budget
- + versatility as for the curved shapes needed in the design
- + contribute to acoustic insulation
- limited fire resistance

- + cost saving
- + waste reduction as sourced on site
- limited supply

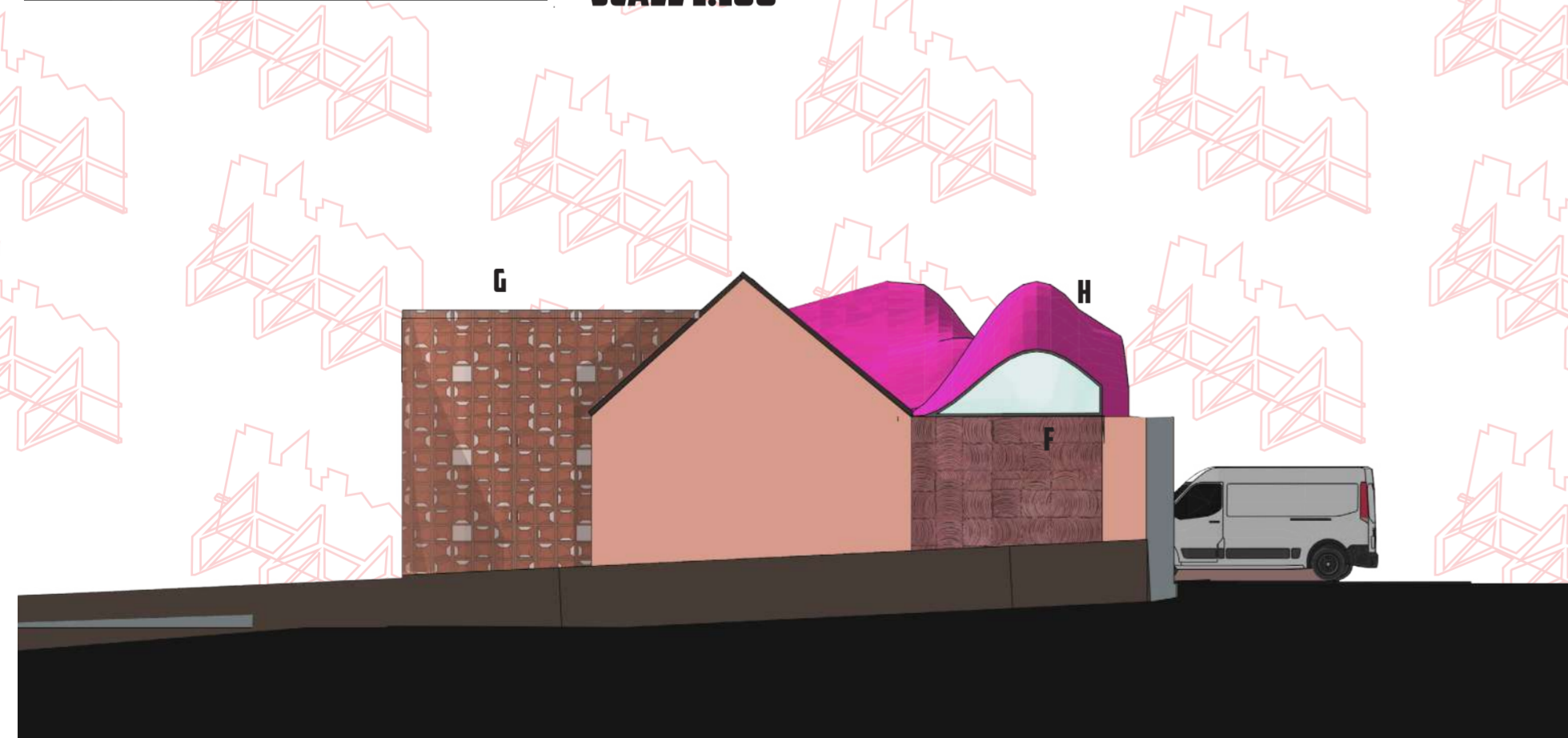
- + rainscreen and fire resistant
- + natural fibre and resin system (renewable resource)
- +The fibres sequester carbon, locking it in and stopping it releasing back into the atmosphere, resulting in a very low-carbon product.
- limited design options

NORTH EAST ELEVATION



0 Mt 2 4 8

SCALE 1:100



F  Roof clay tiles reused from site and from Authentic reclamation LTD (Iewes)

G  Timber and reclaimed clay tiles

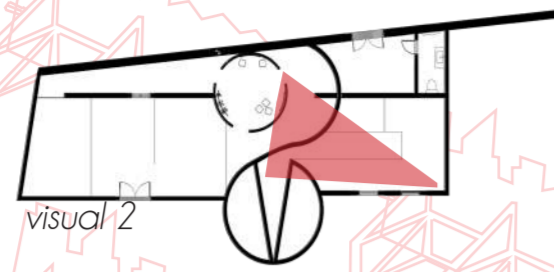
H  Polycarbonate translucent panel by Rodeca

- + cost-effective as working with limited budget
- + sustainability
- maintenance and repair

- + cost saving
- + waste reduction as sourced on site
- limited supply

- + flexible, versatile and lightweight so perfect for the shape of the roof
- + transparent and natural light transmission
- +UV protection
- needs more insulation as on it's own it's not enough
- not very fire resistant

MATERIAL STUDY



SPATIAL EXPERIENCE

THEATRESCAPE IN 30 YEARS



In a world 30 years from now, the devastating effects of climate change have reshaped our Planet as we know it. Heatwaves and droughts have turned, once fertile lands into barren soil. Despite this bleak scenario, urban commons are a beacon of hope. These safe areas within cities have transformed into thriving havens for communities, where sustainable practices and a harmonious lifestyle are cultivated to preserve and restore our fragile planet. Collaboration, education, and a deep sense of environmental responsibility drive the inhabitants of these urban commons to create a sustainable future.