



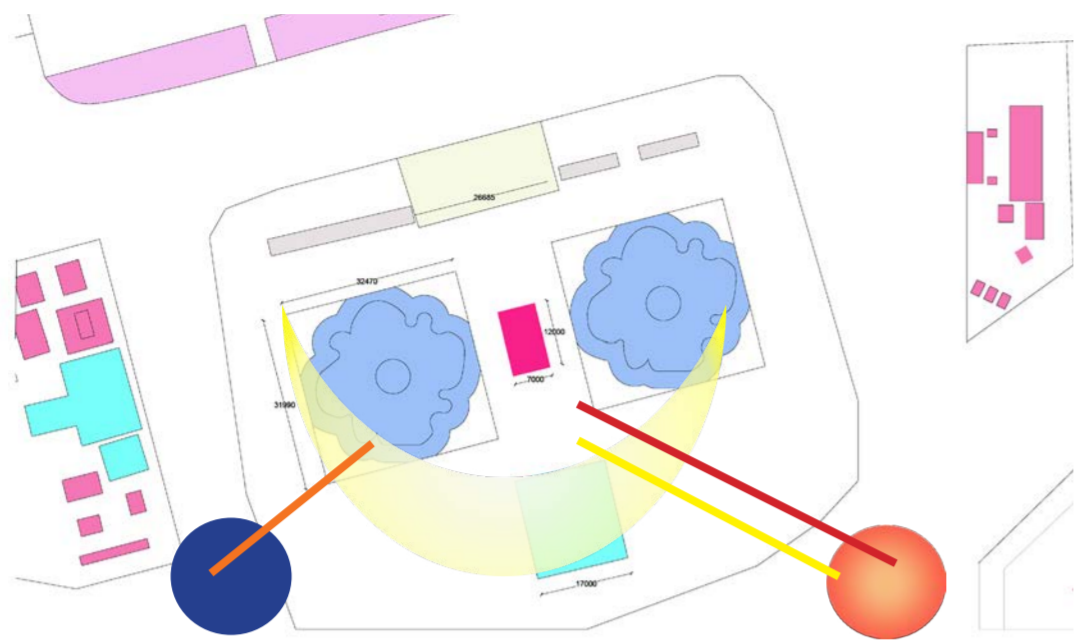


Fashion Forward





Location: Trafalgar Square, London, WC2N 5DN
Coordinates: 51.5080° N, 0.1281° W

Sunpath/Site Plan

-  Sunset
-  Sunbeam
-  Sunrise
-  The Site





Traffic

-  Light Traffic
-  Moderate Traffic
-  Heavy Traffic
-  The Site

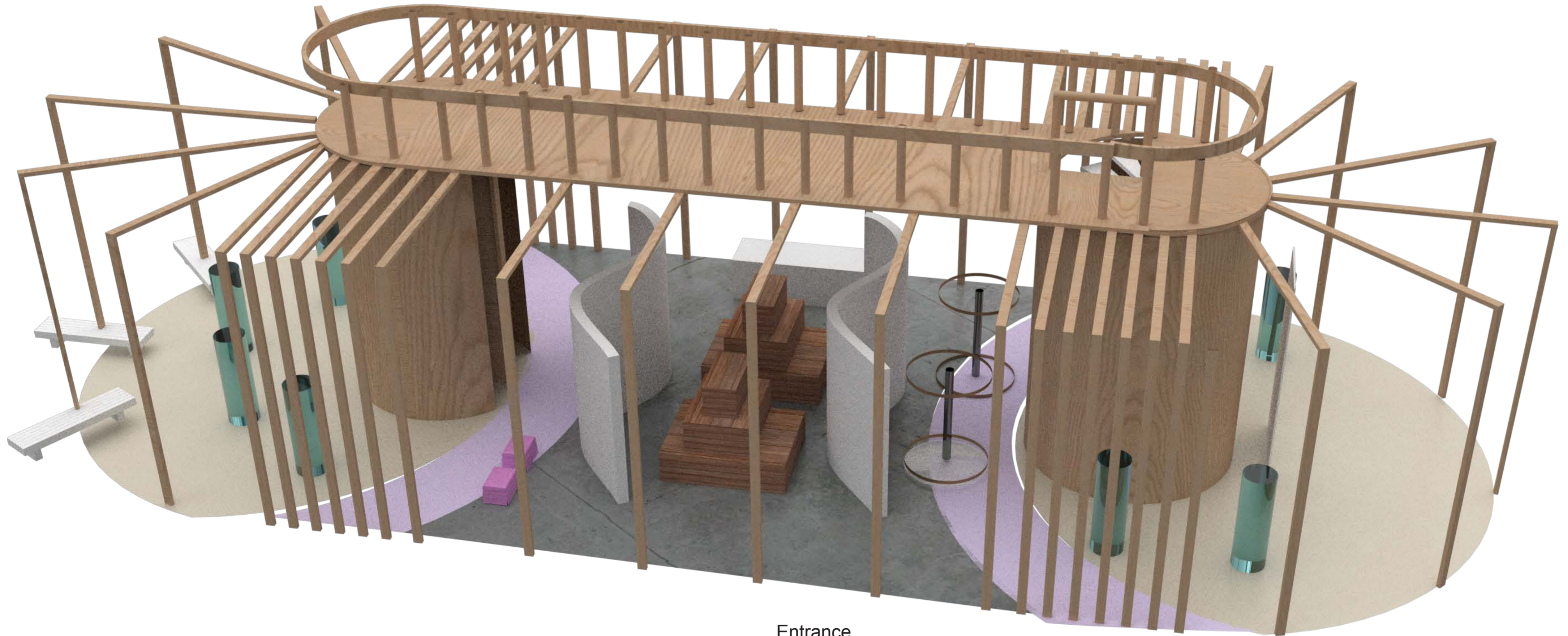


Greenery

-  Greenery
-  The Site



Axonometric

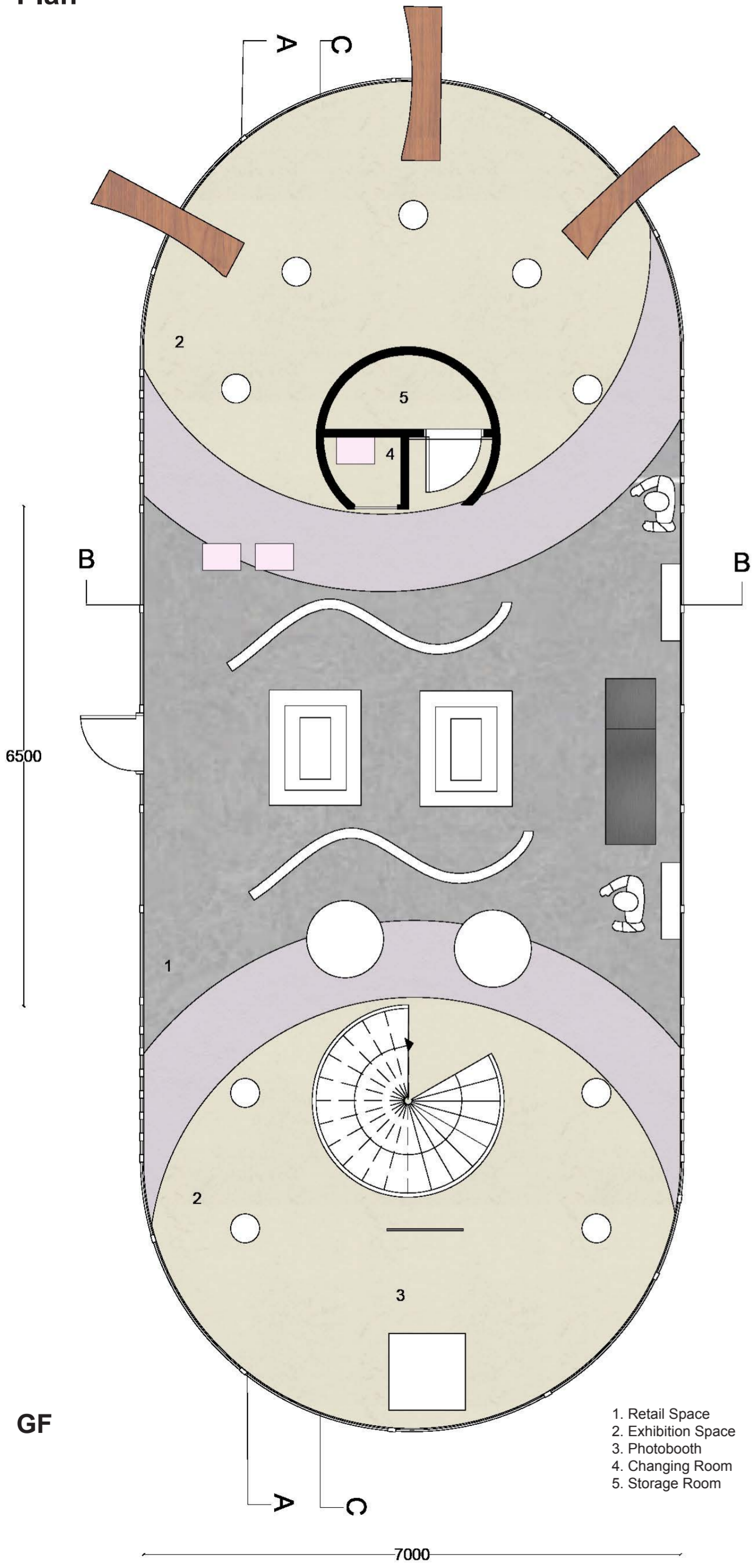


Entrance

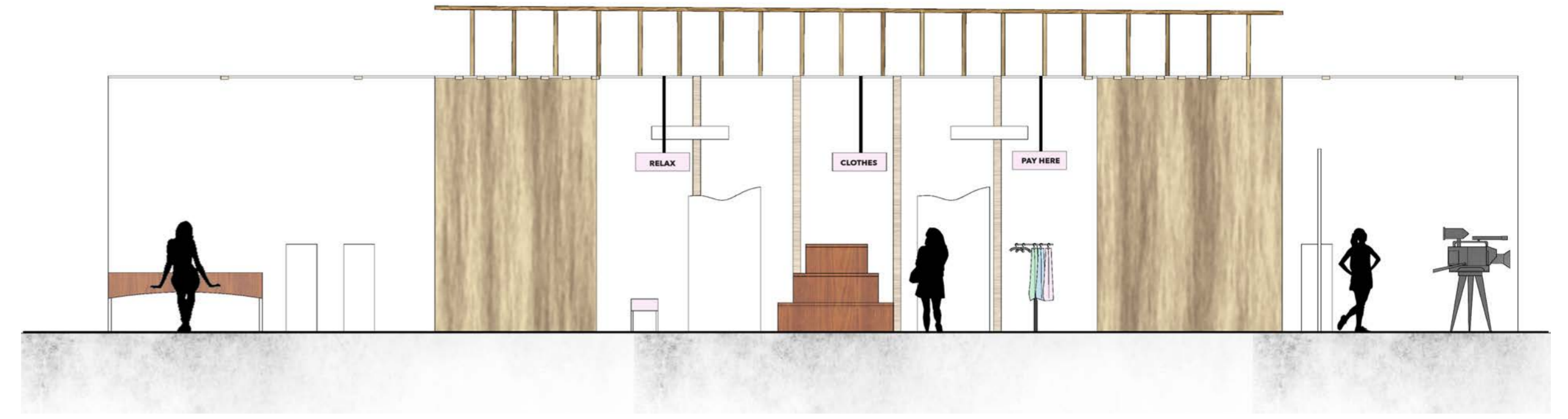
Private Space: Storage Room
Public Space: Retail, Exhibition, Photobooth, Staircase, Fashion show, Changing room.

Exhibition space to exhibit and explore cultural appropriation, so people understand why it is important and how to respect cultures.

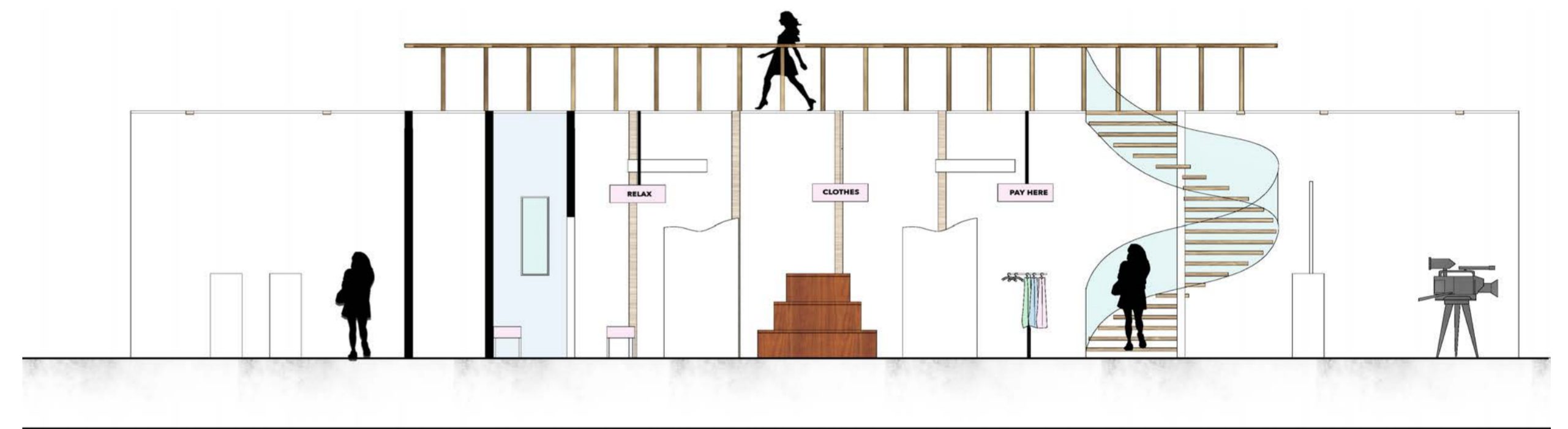
Plan



- 1. Retail Space
- 2. Exhibition Space
- 3. Photobooth
- 4. Changing Room
- 5. Storage Room



Section A-A



Section C-C



South Elevation



East Elevation

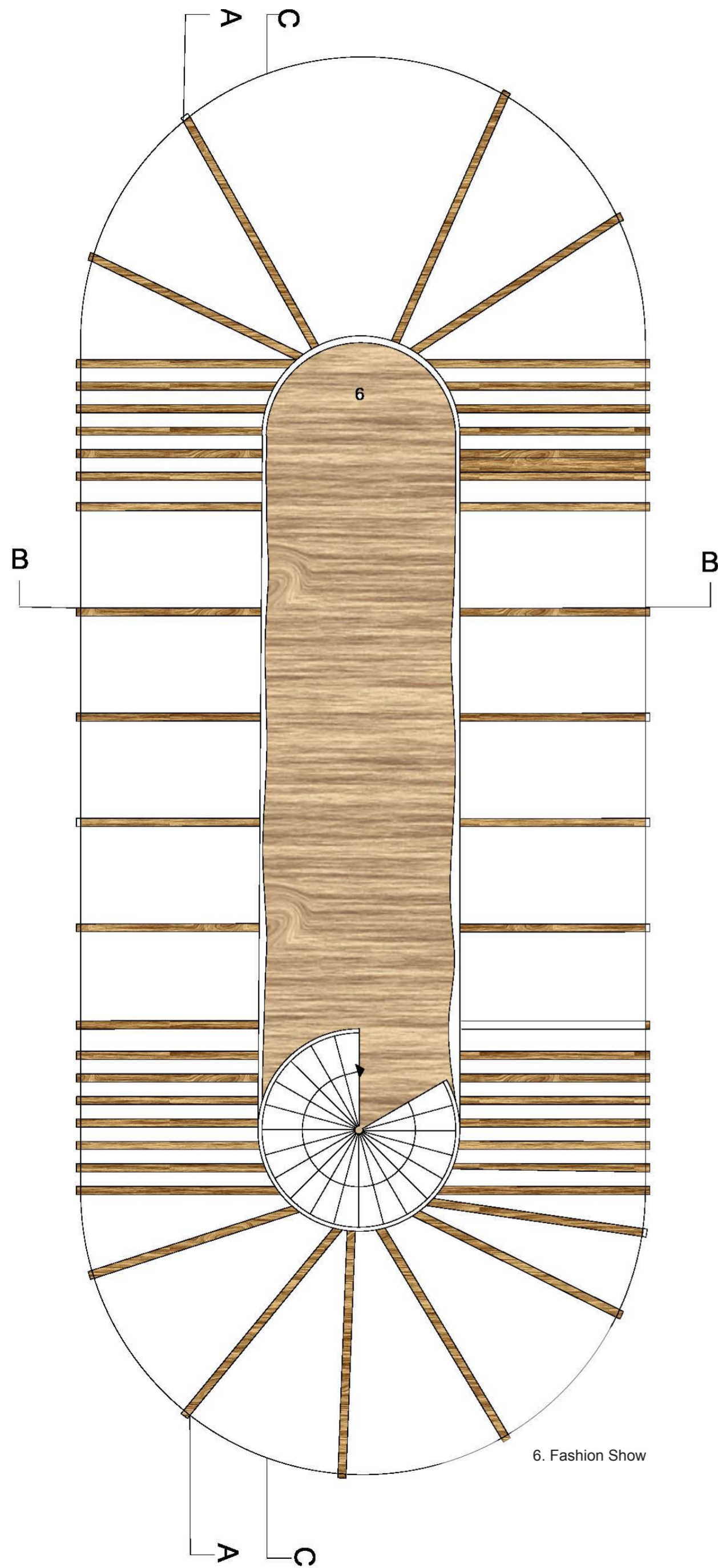
Materials

	Marmoleum Concrete Moon 3701 Flooring		Marmoleum Concrete Lilac Flooring
	Marmoleum Concrete Fresco Eternity Flooring		Timber

GF

7000

6500



Interior



Photobooth Interior

Model is made out of plywood. The ribs are lasercut and walls are foamboard. Outdoor seating made of balsawood and connected from the ribs. On top there is a fashion show, which can be accessed via the spiral staircase. Ideally people can watch the fashion show from the ground level.

